

DORE to DOOR

DORE VILLAGE SOCIETY

NO. 154 SUMMER 2024

ISSN 0965-8912



Blades set for new Training Centre

Sheffield United is thrilled to announce a deal has been struck to significantly enhance the club's off-field infrastructure.

After months of detailed discussions and planning behind the scenes, the club can now confirm an agreement is in place to purchase land for the development of a new first team training centre.

Taking time to scour the city for a suitable location, the club have secured the site of the HSBC Sports and Social Club in Dore, with the aim of developing the area to become the new home of our men's first team.

The new state-of-the-art training centre will include two full sized Desso pitches, additional grass and all-weather pitches, first team offices, a gymnasium and potential player residential accommodation. Further details will follow in due course.

The club will also retain the current training headquarters at Shirecliffe, which will solely be used by the Academy, with further scope to develop the site towards the long-term end goal of achieving Category One status.

On the announcement of this significant news, United's chief executive officer Stephen Bettis said:

"This is fantastic news for the long-term development of the club and another huge commitment from Prince Abdullah and the club's board to the continued improvement of our infrastructure. For well over three years, we have been working hard to secure land within the city to take our training facilities to the next level, and by securing the site in Dore, our patience has finally paid off.

"The site gives us everything required to ensure Sheffield United will have one of the top training facilities around, and by moving the first team away from Shirecliffe, we have space to develop the Academy to be able to eventually meet Category One status.

"This is a significant investment in the football club. It will give us a long-lasting legacy from being back in the Premier League and will give the first team a solid foundation for future success for many years to come."

Archaeology in Dore

Summer is on the way and it is the time to do more practical Archaeology. After two seasons of carrying out investigations into the rich history of Dore through carrying out sample test pits around the village it is time to ask if anyone would like to take part.

We are looking for new sites to set up a test pit. What does this mean? Basically a piece of your garden where you are happy for a one metre square pit to be dug down to bedrock. All dug and back filled in a day, and we prefer open soil or grass rather than disrupting precious flower or fruit planting. A member of The Time Travellers team (no - sadly not Time Team) will come to assess the potential test pit site. It is something older children under supervision as well as adults can enjoy.

In previous seasons we have found artefacts dating from the Roman period onwards, and even a prehistoric standing stone being used as a gate post! There is an Iron Age Hill fort in Ecclesall Woods. The oldest properties in Dore date back to the 1400s and you will be familiar with several houses which are from the 1600s. Any offer from a house round the former site of Dore Hall off Vicarage Lane would be extra interesting.

So if you have always wanted to be on a dig here is your opportunity. Look on the website www.thetimetravellers.org.uk for further information and photos from previous test pits. Or get in touch with our Secretary, Dorne Coggins, at dornecoggins@gmail.com who will be happy to tell you more.

The Time Travellers are taking part in the UK Festival of Archaeology which runs from the 13th to the 28th July. We will be at the Graves Woodland Centre to showcase local finds and identify any of your finds. The date and more information about this event will be on our website.

Cover: Scenes from a rather damp Gala last year, as we look forward to better weather for 2024. It will be better weather. It will!

Dore & Totley Lunch Club 50th Birthday

A short and informal service of thanksgiving to celebrate fifty years of our lunch club will be held at the Dore and Totley United Reformed Church on Totley Brook Road, S17 3QS on Thursday 18th July at 2.30 pm. This will be followed by tea, coffee and cakes.

We are giving this advance notice hoping that all volunteers, ex-volunteers and anyone with a connection to this club can join us. Please pass the word around.

The original idea for the lunch club came from Vivien Filleul, All Saints Church Totley, after she had visited a lonely, isolated lady. Following that, a public meeting was held on 22nd November 1973 at the URC, arranged by Reverend Duncan Wilson. This was to see if a club was a viable proposition for the household of the area as the need had become very obvious. The meeting was addressed by a member of Family and Community Services who supported us throughout, and we also had support from the local Council of Churches.

Enough volunteers came forward to make this possible and the club opened on Tuesday 8th January 1974 with six visitors, which was slowly built up to sixteen.

After fifty years we still meet every Tuesday at the United Reformed Church on Totley Brook Road. We provide a hot two-course meal cooked on our premises but, most important of all, companionship.

We have chairobics, plus two meals out during the year and a Christmas meal at the club (supported by a donation toward costs from the Dore Village Society), occasional singsongs and reminiscing. On occasions during the year the Teapot Choir sing to us as they rehearse in the church on Tuesday mornings.

We are fortunate to still have Vivien's involvement and we much appreciated her husband Ken who was our Treasurer for many years until he passed away recently. We will miss you so much, Ken. The continued running of the club has to be thanks to the loyal support of so many volunteers over all these years. Also, our club could not survive without Transport 17 minibuses which are manned by wonderful caring volunteers.

Elaine Ferguson and Elizabeth Walkden

Mike Jackson's Open Garden

Mike Jackson will be opening his garden at 9 Newfield Crescent, Dore on Sunday 16th June from 2pm until 6pm. Admission will be free and everyone will be welcome. Refreshments will be on sale in aid of PACT, the Parents Association of Children with Tumours and Leukaemia. Donations welcome, cash or card. Mike's garden will already be familiar to many residents from previous openings over many years and will be of particular interest to all those who love gardens and garden visits. The garden has been developed over the years as a wildlife haven. It has a wide range of plants, trees and bushes and a variety of habitats including two ponds with a connecting stream. Of particular interest will be the many varieties of iris and primulas which will be at their best at this time of year. Children and well-behaved dogs will be welcome. Let's hope for a fine afternoon and look forward to an occasion of friendly relaxation with family and friends.



Dore Festival 2024

Full details of the programme for Dore Festival 2024 are elsewhere in this issue.

To start the Festival Doreways and DART are organising a two-day exhibition at Dore Old School on Saturday 29th and Sunday 30th June from 10am to 4pm on both days. Refreshments will be available. On Saturday 29th June Dore Methodist Church is providing coffee, tea, biscuits and homemade cakes from 10.30am to 12.30pm and again from 2pm to 4pm. All proceeds to 'More in Dore'. On Sunday 30th June refreshments will be available at Dore Old School throughout the day.

The theme of the exhibition is 'Dore Past and Present in Art and Photographs'.

Not only will this be a rare opportunity to see the Dore Village Society Heritage Collection of Artwork along with a selection of the historical photographs of Dore places and people, but we would very much like to display some of your art and photographs taken of places and people in the village.

There are some very talented artists and photographers in Dore – you have only to think of entries to Dore Show and some of the images that appear on the Dore and Totley Forum. There is one proviso about photographs. If you take photographs of people, please can you make sure that you obtain their permission to display them. Your focus can be anything that reflects Dore in 2024.

To register an interest please can you contact Dorne Coggins at dornecoggins@gmail.com who can give you more details and arrange for collection of your work. For photographs we would be delighted if some of them could go on to be part of an archive of Dore in 2024.

Dorne Coggins

Abbeyle Park Bowling Club

Following a long, dark and wet winter our members were all looking forward to our opening day on Saturday 30th March. Sadly, it was not to be as the wet weather had delayed winter green maintenance. However, we were not downhearted and about 40 members gathered on the Saturday afternoon for a food fuddle. The sun came out and we sat on the benches outside the pavilion with our Pimms and assorted goodies. At the time of writing, we hope to open on Saturday 6th April – fingers crossed the summer will begin. I had intended to include a photograph of our Chairman bowling the ceremonial first wood of the season but instead there is a picture of the empty green bathed in sunshine.



We have kept in touch over the winter with our regular activities – bridge, whist, dominoes, keep fit, rummikub and our new discovery, Mexican train, a game using 12 spot dominoes for up to seven players which can get quite noisy.

By the time this is published we will have completed this year's public open days. However, if you are interested in seeing what we are about please telephone Mike Sills on 0114 2356598 and we will be pleased to arrange a visit - both experienced players and beginners are equally welcome.

Local community volunteer effort continues at 'Ethel's Wood'

The winter woodland enhancement project at Haythornthwaite Wood, on the edge of Dore, was rounded off during February and March with a spot of much-needed drystone walling restoration under the professional tuition of Will Husband of the Peak Walling company.

Seven local volunteers pitched in over two days and were briefed in the techniques of drystone walling, a traditional countryside craft that is very much alive throughout the western green belt of Sheffield and the eastern Peak District.

Haythornthwaite Wood is the CPRE Peak District and South Yorkshire's only piece of woodland and is named in dedication to the founder of the charity, Ethel Haythornthwaite and her husband Gerald, and is now in good condition for the future as the charity enters its Centenary year. Over the winter with the help of local volunteers and the Council's Ranger Service we have thinned trees, carried out a species survey, laid the hedge, created habitat piles for invertebrates and small mammals, and repaired and strengthened the boundary wall, with volunteers doing a great job of rebuilding and securing three sections of the wall adjacent to Brickhouse Lane.

The enhancement project has been funded so far by a grant from the Dore Village Society and from the national CPRE 'Hedgerow Heroes' fund. Keep an eye on the CPRE website for more woodland news as it comes – www.cprepsy.org.uk

Cassa Townsend

Engagement Lead – CPRE Peak District and South Yorkshire

Defibrillator at the Tennis Club

The Dore and Totley tennis club at 48 Devonshire Road has recently had a defibrillator installed at the club. It is located by the door to the clubhouse, at the top of the drive, and is available for use at any time of the day or night by the public. Although intended for the potential benefit of club members, the defibrillator, like others in the area, can be used by anyone who needs it. Instructions for use are provided automatically when the device is switched on.

Hopefully it will never be needed, but it is a potentially useful addition to health support in the Dore and Totley area.

Pete Alcock, Tennis Club Chair

Dressing dropped

As some of you may be aware, several fairly serious problems have arisen regarding the feasibility of producing a well dressing this year, one of them being a lack of younger people from the community stepping up to learn the skills required.

As a result of these problems, it has been reluctantly decided that there will not be a well dressing this year. None of us wanted to make this decision, but there seemed to be no alternative. However, there will be a stall at the Gala in the summer, where photographs of past well dressings will be displayed, so please come along and have a look and if you are able to offer any help for next year and hopefully the years after that it will be greatly appreciated.

The Well Dressing Team

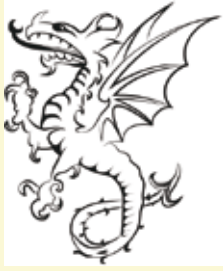
Colin's first Council Election!

Following the Local Elections on 5th May, Dore has a new councillor - Colin Ross of Wyvern Gardens (Liberal Democrat). In his acceptance speech he committed himself to working hard for the interests of the people of Dore Ward over the next 4 years.

The results were:

C Ross	Liberal Democrat	3,292
J Harthman	Conservative	2,627
M King	Labour	1,248
J Baptie	Rec. & Services	124

(Above from Dore to Door in May 1994. See article, page 24)



DORE Village Society

Dore Village Society 59th Annual General Meeting

Notice is hereby given that the 59th Annual General Meeting of the Dore Village Society will be held on Wednesday 19th June 2024 at 7:30pm in the Christ Church Dore Community Centre, Townhead Road.

The AGM meeting papers are on our website at www.dorevillage.co.uk under the tab "Dore Village Society". These include our annual report and accounts.

At the AGM we present the Trustees' report of activities and work undertaken and describe our policies for the work that we do and the way we spend members' money. We also submit our annual accounts for scrutiny and elect new Trustees to fill vacancies and to replace those retiring or resigning.

There are currently three vacancies for Trustee. Five Trustees are reaching the end of their three-year terms at the AGM and are eligible to stand for re-election. In addition, one Trustee who joined the committee since the last AGM has to stand for election at this AGM. Therefore, there will be nine posts to be filled.

Our work is defined and governed by our constitution and this can be found at www.dorevillage.co.uk under the tab "Dore Village Society".

Agenda

1. Apologies for absence
2. Minutes of the 58th Annual General Meeting
3. To approve the Trustees' Report

4. To approve the accounts for the year ended 31st December 2023
5. Membership fee increase
6. To elect up to nine committee members
7. Any other business
8. Guest speaker

Notes

1. The Trustees' report, the annual accounts and the Independent Examiner's report are on the DVS website and can also be obtained on request by email to agm@dorevillage.co.uk.

2. The Society's constitution requires nominations for election to the Executive Committee to be made no later than 14 days prior to the meeting. Consequently nominations, together with a proposer, a seconder and a brief résumé of relevant background must be received no later than 6pm on Wednesday 5th June.

3. If you wish to stand for election to the committee nomination forms can be obtained from the DVS website via the above link, or any of the current committee members (see our website and page seven of Dore to Door). Nominees, proposers and seconds must be members of the Dore Village Society at the time of nomination and at the time of the AGM.

4. Completed nomination forms can be given to any member of the DVS committee or delivered to our address: The Old School, Savage Lane, Sheffield S17 3GW.

5. A list of those nominated will be placed on the Society's website and noticeboards at least seven days prior to the AGM.

6. The guest speaker at the AGM will be Professor Ian Rotherham, a well-known expert on environmental issues, who writes a weekly column in the Sheffield Telegraph. He will speak about "Wilder Greenspaces and Community Gardens: Environmental Action from the Ground Up".

Jen Donnelly
Chair, Dore Village Society

Local charity requires a treasurer for its Board of Trustees

Did you know that there is a 160 year old charity in Totley ?

Cherrytree Support Services, which is located on Mickley Lane, started life as an orphanage. It

currently offers young people between the ages of 16 to 21 support and accommodation to assist with their personal development during a period of their lives which has been traumatic and led them to become homeless. The site on Mickley Lane accommodates up to twenty young people, and a satellite site in Sheffield can support a further eight. A dedicated team of staff supports our residents on both sites with guidance on life skills and financial requirements with an aim of supporting them back into their family life or their own



accommodation. Our young people can stay with us for up to twelve months, during which time we offer them the chance to gain skills in cooking and budgeting. We take a personalised, flexible approach and provide tailor-made advice and support to meet individual needs. Our aim is to give young people in need a safe place to stay and the opportunity to gain the confidence and independence they need to move towards the life they want to lead. As part of our supportive environment, we offer all residents an in-house

counselling and mediation service. During their stay our young people are also offered the chance to take part in activities and life enhancing trips.

The Charity is overseen by a small group of volunteer trustees whose aim is to ensure that Cherrytree Support Services continues to operate on a sound financial basis for the benefit of staff and residents.

The board of trustees requires a treasurer who is able to oversee the finances on behalf of the trustees so that the board can ensure that all the financial matters are monitored and the accounts, which are prepared by the staff of Cherrytree Support Services, are accurate. This volunteer role would ideally suit someone with a financial background who can spare a few days per month to liaise with the Managers on site and be able to attend four meetings

per year when the trustees get together to review progress of the charity.

Anyone who feels they may be suitable for this position, or who may wish to discuss the needs of this post, should contact Steve Walker who is the current Chair of the board of trustees. Initial contact can be via email swalker@cherrytreesupportservices.co.uk

Steve Walker
Chair of Trustees, Cherrytree Support Services

I was beginning to despair that we'd ever see the sun again and that the never-ending rain would turn the garden into a swimming pool but, lo and behold, the weekend that I sat down to write my article for Dore to Door the sun burst forth and shone down on the Dragon Hunt. It was a glorious afternoon and 60 intrepid 'Georges' hunted dragons all around the village. Huge thanks go to the organising group, Doreways, for their hard work in making a lovely afternoon's adventure.

AGM - 19 June, 7.30

It will soon be time for our AGM and this year it will be held on Wednesday 19 June – put the date in your diaries now! You will see the official notification opposite. We are delighted to announce that our guest speaker for the evening will be Professor Ian Rotherham. He is a noted environmental campaigner and lecturer, and regularly writes articles for the local press. We look forward to seeing many of you there.

One item on the agenda for the AGM will be the motion to increase the subscription to £10 per year from January 2025. It will have been five years since the last increase in the subscription fee, and I'm sure that anyone who attends any of our free events – Dragon Hunt, Party on the Green, Lantern parade, Dore Show (nearly free) – not to mention all the work that goes on in the background, examining planning applications, supporting More in Dore, upkeep of the war memorial, developing Dore's green infrastructure strategy to name a few, will agree that it is good value for money.

There are currently three vacancies on the committee so please do consider if you would like to join us. This doesn't have to happen at the AGM though, you would be welcome to attend a committee meeting at any point in the year. The meetings are held on the last Tuesday of the month (except December) so if you would like to attend the next meeting to see what it's all about, please drop me an email at jen.donnelly@dorevillage.co.uk and come along. All the information you need about becoming a committee member can be found on our website www.dorevillage.co.uk. The papers for the AGM including accounts and trustees report can also be found there.

We also still have a vacancy for a Secretary, so to give you an idea of what is involved I have included a list of tasks for this position. It's actually not a lot and if you had about an hour a week to give to your community, that would be plenty.

The Secretary's job is to

- Prepare agenda for meetings in consultation with the Chair
- Circulate documents via email prior to meetings
- Produce minutes of meetings
- Maintaining a file of paper copies of relevant documentation, particularly signed copies of minutes
- Correspond as necessary to requests, follow up enquiries (this is minimal)
- Prepare notices and nomination forms for distribution prior to the AGM
- Collate AGM papers for inspection prior to the event and for attendees at the event
- Update information for DVS committee members on a regular basis e.g. contact details, calendar of activities.

Dore Festival

Dore Festival week this year starts on Saturday 6 July and culminates with a songs of praise service on Sunday 14. It is a week packed full of events including the usual Morris Men, Dore Male Voice Choir and of course the Scout Gala. This year Totley Scouts will be joining us again and there are a few new games currently under construction in my back garden. I'm keeping my fingers firmly crossed for better weather this year too. More details about Dore Festival can be found on page 37. Unfortunately, there will be no well dressing this year as not enough volunteers came forward to offer their time. We will try again for next year so if you fancy having a go at this traditional artwork please do get in touch.

I do hope the weather improves soon and that we can all get outside and enjoy some sunshine.

Jen

DART and the new Dore blog

DART (Dore Archive Research Team) launched their new blog recently and we have had a lot of interest in the site.

dorewasinderbyshire.blogspot.com/

The blog is full of stories and information relating to the rich history of Dore with a light hearted twist in some cases. To make it really easy for those of you with smart phones we have a QR code for you to access the site.

We are adding new content regularly so do please visit the blog to discover more about Dore in the past.



Totley History Group

We have been enjoying well attended meetings throughout winter and feel that post-Covid caution is thankfully now in the past.

For anyone who heard Catherine Warr's talk in January 2023, The Civil War in South Yorkshire, will know they're in for a treat when she returns in May. The meetings for the coming quarter are

May 22 - Yorkshire Folk Lore, presentation by Catherine Warr

June 26 - A Spicy Tale, Henderson's Relish. A talk by Mark Dawson, preceded by a short AGM

July 24 - A Walk and Talk in Whirlow Park Gardens by Susan Turner. *This will be at 11am and numbers are restricted.* Please contact www.totleyhistorygroup.org.uk to reserve a place.

Annual membership renewal (£5) is now due, although our AGM that is usually held in April will this year be held in June. Meetings are in Totley Library on the fourth Wednesday of each month at 7.30pm unless otherwise indicated. Subscriptions £2 for members £3 non-members.

Refreshments served after our meetings encourage the sharing of memories and a chance to catch up with friends. All welcome.

Pauline Burnett

Dora



Dore Show's latest judge!



Volunteer wardens at the launch of the service in April 1954

Celebrating 70 years of Peak District National Park Rangers

Peak District Rangers returned to their roots to mark their 70th anniversary. As part of the celebrations, National Park Rangers recreated a photograph taken outside Edale's Old Nags Head pub, where the original service was launched on Good Friday, 16 April 1954.

The Peak District was the UK's original national park – designated on 17 April 1951 – and led the way with the creation of what would become the country's first ranger service. Tom Tomlinson was appointed the Peak District's first national park warden in January 1954 and a warden service of part-time volunteers was created three months later.

Peak District National Park Authority chair, Ken Smith, said: "In the first year of the service, there were 500 volunteers, coming out at weekends to look after the countryside, to enforce the byelaws and encourage people to enjoy the National Park in a responsible way.

"In many respects, the role of rangers today is not that different



Recreating the launch photo - rangers celebrate the anniversary

to what it was 70 years ago. Rangers have a salutary role, encouraging people to do the right thing in the countryside."

Ranger team manager Andy Farmer added: "I've always been very proud to work with the ranger service. We play a vital role, serving the interests of the place, our communities and our visitors."

In the early days of the service, warden briefings took place in the Old Nags Head, Edale, where landlord and access campaigner Fred Heardman had also set up the Peak District's first information service in the snug.

Over the years, the role of wardens developed to include wider engagement, including leading walks, conservation and safety work. The term 'ranger' was first used during the 1980s.

Today the Peak District National Park Authority employs 28 rangers – including specialist rangers who work on its trails or with education groups – and is grateful for the hard work and commitment of around 230 volunteers.



bannerjones
solicitors

We know...

That time is of the essence when **moving house**. To help you get your house move off to a flying start we use a convenient online portal.



Our Flying Start online portal allows you to complete your part of the conveyancing process quickly and securely from the comfort of your own home.

- ✓ Quick and convenient
- ✓ Safe and secure
- ✓ Easy to use
- ✓ No need to attend our offices

96% of our clients recommend us

Speak to our friendly team of experts in Dronfield and Sheffield on 0333 200 2304 or visit www.bannerjones.co.uk

Dore and Totley Jazz Appreciation Society

What is it?

A group which enjoys listening to jazz on CDs. The jazz is very varied in style, content and period.

Where do we meet?

Totley Methodist Church, 1 Grove Road, S17 4DJ

When?

Tuesday afternoons, 1.30-3.30 pm, weekly, with breaks for Christmas, Easter and summer months

Cost

Approximately £3 a week. New members free for 2/3 weeks before joining. Free tea/coffee/biscuits at half time.

Format

The programme is organised around presentations from members and friends selecting their own topic and disks. The emphasis is on listening and discussing the music. Speakers usually provide some background information and context for the music selected. Members are not required to give presentations and should not worry if they don't want to. Below are a few of the recent topics to illustrate the range of music selected.

- The music of Scott Hamilton, John Coltrane, Hampton Hawes, Dizzy Gillespie
- The influence of Bill Evans on other jazz musicians
- Musicians enjoyed on a Caribbean jazz cruise
- My favourite top ten jazz tracks

By custom, the first and last sessions of a programme contain members' choice of disks.

If you enjoy jazz and meeting other jazz enthusiasts do come and join our group. New members are always welcome.

David Thornber and Stuart Trickey

Councillors' Surgeries

At Dore Old School on the second Saturday of each month, from 10.30am-12pm.

The surgeries at Totley Library are on the second Monday of the month, from 6pm-7pm.

Contact Dore to Door:

Editor: Keith Shaw

editor@doretodoor.co.uk

Tel: 0114 236 3598

Post: Dore to Door, c/o Dore Old School, Savage Lane, S17 3GW

Advertising: Richard Courcier

advertising@doretodoor.co.uk

Tel: 07583 173 489

Distribution: Gillian Farnsworth

Tel: 0114 235 0609 if you haven't received your copy or if you'd like to help with distribution

Deadlines for the Autumn edition:

Editorial – July 18

Advertising – July 15

Autumn publication: August 16

Dore Village Society

Registered Charity No. 1017051

The Society is the designated Neighbourhood Forum for the Dore Area, with responsibility for preparing a Neighbourhood Plan for Dore. The Society also aims to foster the protection and enhancement of the local environment, amenities and facilities within Dore, to encourage a spirit of community and to record its historic development. Membership of the Society is open to all residents of Dore, those who work in Dore and elected local council members for Dore. Membership is also open to Corporate Members representing societies, associations, educational institutions and businesses in Dore.

Current membership rates are £7 pa for individuals and £35 for corporate members. Telephone numbers of Committee Members and associates are below; for email, please write to firstname.surname@dorevillage.co.uk, e.g. jen.donnelly@dorevillage.co.uk

Committee Members:

Chair	
Jen Donnelly	262 1861
Deputy Chair	
Caroline Davies	07764 169197
Secretary	
vacant	
Treasurer	
Colin Robinson	0777 855 8555
Cath Fallaize	
Planning	
Philip Howes	236 9156
Archives	
Dorne Coggins	327 1054
Membership	
Joan Davis	07531 183438

Dore to Door

Keith Shaw 236 3598

Website/Social Media

Andrew Cameron

Environment

Margaret Peart

Neighbourhood Forum Steering Group

Christopher Pennell 235 1568

Community Activities

David Bardsley

More in Dore

Julia Watkinson

Notice Boards

Caroline Davies 07764 169197



Published by Dore Village Society

Opinions expressed in letters, articles and services offered by advertisers are not necessarily endorsed by the publishers.

No part of Dore to Door may be reproduced in full or part without prior permission of the Editor on behalf of the publishers.

The Editor retains the right to edit or amend any letter or article sent in for publication.

In view of the possibility of human error by the authors, editors or publishers of the material contained herein, neither the publisher nor any other party involved in the preparation of this material warrants that the information contained herein is in every respect accurate or complete, and they are not responsible for any errors or omissions or for the results obtained from the use of such.

Readers are encouraged to confirm the information contained with other sources.

Copyright Dore Village Society 2024

Printed by The Manson Group Ltd.

www.mansongroup.co.uk

It's been another few busy months for ward Councillors with several major issues coming under review. The first of these was the decision by the city council to reject the planning application around the site of the Dore Moor Garden Centre. We were very pleased with this decision as it is an important test case for the protection of the Green Belt around our local area. The developer has the right of appeal to the national Planning Inspectorate, but we sincerely hope that they will take on board the very clear feedback from residents.

The announcement of the sale of the HSBC Sports Club has also generated some concern, however detailed plans for the future of the site are not yet available. Colin & Martin have met representatives of Sheffield United and we understand that their plans for the site will be made available in the next few months. We also understand that Council Officers are looking at the general provision of sporting facilities in the local area.

Another key issue that has dominated our inbox for several weeks has been the state of the city's finances. Sheffield is currently not in the same situation as other local authorities who have effectively declared bankruptcy, but due to some poor decisions in the past and non-delivery of savings in critical areas, our financial reserves are at a very low level. On 6th March a full meeting of the city council made some difficult choices and agreed a budget for the next municipal year. We will be scrutinising its delivery very carefully.

As we reported in a previous article, heavy winter and spring rainfall has led to several flood related incidents across the ward. We were pleased to see Council officers & contractors working hard to mitigate the impacts, including sewer & drain repairs along Totley Brook Road. A temporary solution has also been put in place on Ecclesall Road South, near the junction of Whinfall Court, to reinstate a two-way flow of traffic while engineers develop a more permanent solution to the major landslide on the supporting bank.

On a similar theme we have also seen a significant rise in

casework related to Council House repairs, a lot of which have been weather and damp related. While the local authority cannot control the weather, it does have a duty of care to ensure that the people it houses have decent living conditions, and any remedial work should be carried out as quickly as possible. Do get in touch if you are experiencing significant delays with repair work and we will contact the housing department on your behalf.

An unexpected and unwelcome item in our inbox was the extraordinary announcement by Network Rail that the long-running Hope Valley upgrade project will not be delivering a more frequent train service between Sheffield and Manchester after all. This was a key commitment in the original business case and the decision to drop it only became public a week before work on the line was due to be completed. Improving transport connections between major cities is widely accepted to be a major driver of economic growth. Simply dropping it quietly without consulting key stakeholders (like the Council) was frankly disgraceful.

And finally

This article is being written shortly before the local elections. While the outcome of those was unknown at the time, one thing we did know is that our long-time friend & colleague Colin Ross is stepping down from the Council. He has been a fantastic representative and champion of our local community and we wish him well in whatever he decides to do next. One thing is for sure, he will continue to speak up for Dore and the surrounding area.

As ever, please feel free to contact us with any questions or feedback about Council services or come and meet us at one of our regular surgeries. These are held on the second Monday of the month at 6pm in Totley Library, and the second Saturday of the month at 10.30am in Dore Old School.

Martin and Joe

martin.smith@councillor.sheffield.gov.uk

joe.otten@councillor.sheffield.gov.uk

Dore Optician

Ian Truelove BSc(Hons) MCOptom

Family Optometrist

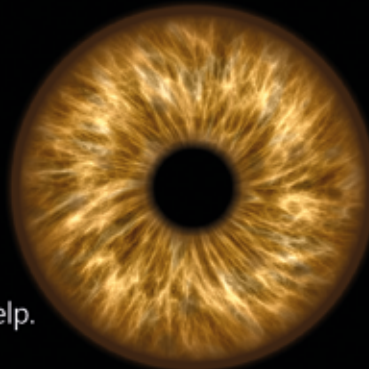
Personal and Professional eye care for all the family

Ian and Tina Truelove have refurbished Dore Optician with the very latest technology

➤ Hospital-quality 3D OCT imaging allows earlier detection and diagnosis of many eye problems.

➤ Hundreds of frames to choose from for all the family, covering a wide range from £10 to designer.

➤ Home eye tests available if you are unable to leave the house without help.



➤ Digital retinal photography.

➤ ReadEZ: Coloured overlays and Enhanced reading assessments for those with reading difficulties or visual stress.

➤ Free comprehensive hearing assessments now available.

➤ Free NHS and private eye examinations – hourly appointment slots, never feel rushed.

Please contact the practice for more information, or pop in for a chat.

25 Townhead Road, Dore, Sheffield, S17 3GD

Tel: 0114 3273737

Email: enquiries@dore-optician.co.uk

Web: dore-optician.co.uk



Association of
Optometrists
Ian Truelove
MEMBER 2024



ReadEZ



THE COLLEGE OF
OPTOMETRISTS
MEMBER 2024

Providing NHS services and registered with the Association of Optometrists, College of Optometrists, General Optical Council

A Community Orchard in S17?

A group of us have come together to create a community orchard on an unused plot of land. We would like others to join or support us in our vision for a beautiful growing space, rich in wildlife. We have the beginnings of positive feedback from Sheffield City Council and we are hopeful that, given support and a clear way forward, this could become a real possibility.

How will the space be used?

- For local people to get actively involved in growing, pruning, gathering, cooking, eating and learning about tree fruit.
- It will be open and accessible to all.
- To celebrate fruit in all its variety – e.g. Apple Day in October, Wassailing in January, gathering and pressing fruit in the Autumn.
- It will provide a shady and peaceful area for doing gentle exercise, like yoga and tai chi. It will be ideal for meditation, sketching and painting.
- We want to encourage birds, pollinators and wildlife of all kinds.

We are also planning to plant native woodland trees at one end and maintain hedgerows, which would shield the site. We want to provide an open area with seating too.

The site is a small, neglected field on the corner of Mickley Lane near the Shepley Spitfire and next to the allotments. We are exploring charitable status, an appropriate constitution, funding and a clear management plan.

We are looking for support for the project from organisations and individuals. We'd like to hear from you - whether you could offer practical support, you have interest in using the space or you would like more information as the project develops.

If you are interested in this project, please contact us at mickley.orchard@gmail.com.













- Windows
- Doors
- Porches
- Replacement Units
- Composite Doors
- Bi-Fold Doors
- Conservatories
- Roofline
- UPVC Specialists

25 Years Experience

0114 236 9031

07729 174080

 member
  registered

www.windowspec.com

84 Bushey Wood Road, Sheffield, S17 3QB

Dore and Totley Railway Station Train Timetable

Here's a link to the current timetable:

www.northernrailway.co.uk/travel/timetables

When opened scroll down the list of routes to:

N23 - Manchester to Sheffield (The Hope Valley Line) to view and print the timetable. This will automatically update when the new timetable is operation on 1st June.

See also Friends of Dore & Totley Station, page 31.



HADIT's next production is *Better Off Dead*, a "comedy of confusion" by Alan Ayckbourn.

Algy Waterbridge is hard at work on his 33rd crime novel featuring blunt Yorkshire cop DCI Tommy Middlebrass and his new southern sidekick, DC Gemma Price. But it's been a while since Tommy was on the TV, Algy's wife is getting frighteningly forgetful, and his adoring PA sometimes oversteps the mark. With constant interruptions, it's almost the last straw when an old acquaintance turns up to interview him for the press, with alarming consequences. As Algy's fictional characters take over, the lines between fiction and reality become blurred.

Performances will be at Hope Methodist Hall, Edale Road on 5th-8th June, 7.30 pm nightly. Tickets (£10) are available from www.ticketsource.co.uk/hadit or through Carolyn on 01433 620665, which is also the contact number for further details.

ATKIN

ELECTRICAL

- Rewire specialist
- Lights and sockets
- All domestic work carried out
- Electric car chargers installed

Steve Atkin, your local NICEIC registered
Part P Electrician

Call for a no obligation quote, no job too small.

Call 07939 285615

steveatkin@sky.com

Peak Hearing

INDEPENDENT HEARING AID
ADVICE, SALES, REPAIR
and AFTERCARE

iPhone Compatible Hearing Aid Specialist.

Qualified and fully insured Micro-suction
ear wax removal service.

Home visit service available.

The very latest technology with a 5 year warranty.

Ring Ian on 01246-433955

8 High Street, Eckington S21 4DN

Tristan Swain

Garden Services and Maintenance

Established 1984

Unit C4 Sheaf Bank Business Park
Prospect Road Heeley
Sheffield S2 3EN
Tel/Fax: 0114 255 4689
Mobile: 07831 802 539
Email: tristan@tristanswain.co.uk



www.tristanswain.co.uk Public Liability Insurance Waste Transfer Licence

AIMS

Accountants for Business

Tax advice and planning

Accounting and bookkeeping

Regulation and compliance

Business advice and support

Mark Randall FCA

T: 0114 275 0461

M: 07908 592007

E: mark.randall@aims.co.uk

W: www.markrandall.aims.co.uk



ELLIS WILLIS & BECKETT

Auctioneers & Valuers

Ellis Willis & Beckett can trace its roots back to 1870
and is a well-known name in Sheffield and the north of England.
We hold monthly antique and collectible, specialist and quarterly fine art auctions.
Including country and fine furniture, ceramics, paintings, toys,
jewellery, watches and everything in between.

- Free Valuations & Home Visits
- Inheritance / Probate Valuations
- Deceased Estates & House Clearance Services
- Low Commission Rates For Vendors & Buyers

www.ewbauctions.com

 01142 796959

DART and Sheffield Tokens

Tokens had to be introduced from Stuart times onwards when there was a great reluctance to strike coins in anything other than silver or gold. Poor people could never receive wages or make small purchases when the only coinage available to them was in high denominations. Farthings, halfpennies and pennies were the most common token denomination in copper or brass. As hardship hit there were three phases of local token production: mid-17th Century, end of the 18th Century and early in the 19th Century. Tokens were circulated locally in a community where the issuer was known and trusted. Later tokens became used as advertisements, or tickets, like those issued by Thomas Youdan for his Surrey Street Music Hall.



Royal Casino Entrance Token. One of Thomas Youdan's enterprises. The Royal Casino was later renamed Surrey Street Music Hall. Image Courtesy of Totley Local History Group

The only known issuer of tokens in Dore was ROBERT VNWEN (Unwin) struck with a hammer and pincers image. Trade tokens usually carried a symbolic representation of the occupation; hence as a blacksmith he used the tools of his trade – a hammer and pincers. He struck a halfpenny token sometime between 1649 and 1672. On the obverse (heads) was his name and on the reverse (tails) was DORE IN DARBYS.

DART does have access to the will and Inventory of a Robert Unwin of Dore dating from 1701. He was a blacksmith and it is plausible that he could forge and strike tokens easily. The Unwin family through the ages going right back to the 1400s have always

had a strong presence in Dore, and this Robert Unwin's will and inventory of possessions indicates a man of quite substantial wealth for the time.



George III Spade Guinea Token

Dore Village Society's Heritage Collection is full of intriguing aspects of our area's past. The donation by Ash Malia of Whirlow Hall Farm of a George III Spade Guinea Token is a case in point.

The Token is in brass with a deliberately pierced hole, possibly to be suspended from a watch chain. It is the size of a modern 10p piece. A genuine Spade Guinea from the reign of George III would have been the same size and appearance but not in a base metal.

Although dated 1798 it was produced in Queen Victoria's reign as a gaming token for use in card games and for gambling. It was made with George III's head on it to avoid stringent counterfeiting laws in the Victorian period.

Maybe you have an example of a Sheffield token? Sheffield, in the earliest 17th Century phase had 23 known issuers and additionally tokens were being issued by Attercliffe, Dore, Dronfield and Eckington tradesmen, and in a few cases, women. Please do get in touch with us.

Dorne Coggins

Where in Dore?



Do you know whereabouts in our village you can find this inscription? Answer on page 45.



**DEALER APPROVED
NCC
HABITATION
WORK**

We are based near Sheffield, South Yorkshire just a short distance from the M1, Meadowhall and the City Centre.
We also do: MOT & Service • Tyres • Brakes • Batteries

AFP MOTORHOMES HIRE & SALES
346 BRIGHTSIDE • SHEFFIELD S9 2SP
0114 261 0522
www.afpmotorhomes.co.uk



Driveways, block paving, natural stone and porcelain patios, walls and full garden renovations.

Established over 16 years. Fully insured.
Call Darren on: 07782167540 or 01246 237505.

Find us on Facebook, under Apple Landscapes.
www.applelandscapes.com

Millthorpe Nursery

Here comes summer!



With summer approaching we have loads of fantastic perennials and shrubs for your garden, plus everything for your summer basket and bedding displays

Millthorpe Lane, Holmesfield, S18 7SA



01142 890334



Find us on Facebook

Open Tuesday - Sunday 10am - 4pm

S17 DECORATORS

PAINTING & WALLPAPERING



TRUSTED LOCAL RESIDENT
WITH REFERENCES.
FULLY INSURED.
HIGH QUALITY PAINTING AND
DECORATING ACROSS SHEFFIELD
AND NORTH DERBYSHIRE.



"THANKS FOR ALWAYS GIVING US SUCH A PROFESSIONAL
FINISH WHEN YOU DECORATE FOR US."
MRS M. (MILLHOUSES)

"THANK YOU FOR AN AMAZING JOB.
WE KEEP RECOMMENDING YOU!"
MR & MRS D. (BRADWAY)

"WE HAVE COME TO CONSIDER YOU AS A FRIEND"
MR S. (DORE)

"YOUR DECORATING WORK IS SPOT ON - SO QUICK
AND EFFICIENT TOO! WE RELY ON YOU NOW."
MRS A. (DORE)

"YOU'VE DONE A MARVELLOUS JOB DECORATING
THE OUTSIDE OF OUR HOUSE"
MR & MRS W (DORE)

CALL JULIAN TODAY!

07905 523499 OR 0114 2369664

JULIANCROOKES@GMAIL.COM
LONGFORD ROAD, BRADWAY, S17 4LP

FIND ME ON FACEBOOK



Your local Advisers for

- PURCHASES
- REMORTGAGES
- LIFE INSURANCE
- GENERAL INSURANCE

3Sixty Financial Solutions has been providing Mortgage Advice and the associated insurances to Sheffield and the surrounding areas since 2008.

We offer a comprehensive service from initial appointment all the way through to completion. Our appointments are free of charge, we only charge £295 for purchases and zero fees on remortgages.

We offer appointments either in our prestigious offices in Hathersage, over the phone or via video call.

Your home may be repossessed if you do not keep up repayments on your mortgage

To book an appointment visit www.3sixtyfs.co.uk or call 0114 360 3600



3SIXTY FINANCIAL SOLUTIONS

HATHERSAGE POOL

PEAK DISTRICT

OPEN AND HEATED ALL YEAR ROUND!

Summer Season: April – September

Winter Season: October - March



Information and Opening Times: www.hathersageswimmingpool.co.uk
Booking Available Online: www.ticketsource.co.uk/hathersage-outdoor-pool
Tel: 01433 627720

One thousand miles in an open boat across the Bay of Bengal - A story of war-time heroism

One of many heroic incidents from the Second World War involving Dore residents.

Captain Walter Bird, OBE of Townhead Road, Dore

This story records events which took place on 11th March, 1942. It involves Captain Walter Bird and his Merchant Navy crew. His ship was sunk by a Japanese submarine. Captain Bird saw the lifeboats away and on his lifeboat he navigated to the Dutch East Indies where he saw his ship's company housed and the wounded attended to. Each lifeboat could hold 28 members.

The action that involved the SS Chilka and the Japanese submarine is especially poignant since it is recorded as probably the only time that a Japanese vessel actively helped the survivors. The Commander of the submarine spared the survivors. He provided food to the survivors in the rafts and gave them directions to steer and sail towards safety. His name was Lt. Commander Hiroshi Inada.

Rather than risk imprisonment or internment by the Japanese, Captain Bird with six volunteers set off in a ship's lifeboat, without any navigational instruments, across the open seas of the Bay of Bengal towards Ceylon (Sri Lanka today). On the 24th day he was rescued by a Greek vessel off Madras in India.

For this amazing and audacious voyage Captain Bird was awarded the OBE. The London Gazette published the citation:

'The successful outcome of a voyage of such length in an open boat and without proper navigational instruments, is a striking testimony of the master's courage, seamanship and powers of leadership.'

Captain Bird's bravery was widely reported. The final word however must come from the Daily Mirror; in writing home to his parents Captain Bird said: *I've been having lots of fun.'*

Captain Bird also received the Lloyd's War Medal for Bravery at Sea when Master, along with Cadet Khawsi Sayed Shahabuddin who received the British Empire Medal and Lloyd's War Medal for Bravery.

This Lloyd's Medal for Bravery at Sea is from the collection of the National Maritime Museum at Greenwich, London. There were only ever 523 medals awarded throughout the Second World War. It was only awarded to Officers and crew of the Merchant Navy and fishing fleets for exceptionally courageous conduct in wartime.

Cadet Shahabuddin who had been wounded badly on his face, hands and lower back, was imprisoned at Padang for the remainder of the war.

Captain Bird's ship, the SS Chilka

In peacetime the SS Chilka could carry 22 First Class Passengers, 15 Second class Passengers and 3000 deck class passengers. She would also carry 1500 tons of cargo. Normally she plied between Calcutta, Rangoon and Vizagapatam.

Taken from a report detailing the action:

In February 1942 the SS Chilka was serving as a Military Store Ship. On the 11th March 1942 she was en route from Padang to Sumatra when she was shelled by the Japanese submarine I-2. Fire from the submarine destroyed Chilka's gun aft. The submarine then sank the ship. Cadet Shahabuddin, though wounded, attempted to put out the resultant fire with his bare hands for which he was later awarded the BEM and Lloyd's War Medal. The survivors set sail for Mentawai Islands which the lifeboats reached after many days at sea. Other boats were only found after 35 days at sea and taken to Karachi. Only seven of the crew were lost; all killed in the initial action.

What is most unusual is that records exist of Captain Bird as a Ship's Master through the journal kept by Cadet Shahabuddin from his first encounter with Captain Bird. A section is quoted from

Cadet Shahabuddin's book. For those interested in Naval WW2 Wartime History it is a chilling account.

This is an extract where Cadet Shahabuddin meets Captain Bird for the first time:

'Captain W. Bird, Master of S.S. Chilka, of medium height and a pleasant face, was seated at his desk looking at some papers when I marched up to a few feet from his chair, stood at attention and looked him straight in the eyes. He looked me up and down with his piercing blue eyes and asked me whether I had been at sea before. It was quite obvious from the brief conversation I had with him, that, at a time like this, he had hoped that the company would send him a cadet with some previous sea experience. He was aware of the heavy responsibility that had been placed on him with his ship having been converted into a troop carrier.'

'The Captain of a ship is usually a very lonely person. The nature of his duties and the authority that he has to exercise necessarily keeps him away from the other officers and members of the crew. It was more so in the case of Captain Bird as he did not much care for company anyway. He was in his early forties and still unmarried. He seemed to have a particular dislike for the fair sex and never really liked the occasions when as a matter of duty he had to dine with the first class passengers, and protocol demanded that two ladies sit either side of him.'

'He was, however, very fond of his pet cat which had a brownish-grey coat and must have weighed over 10 pounds. She was the only one, other than the ship's officers, who had free access to the Chart Room, where, very often, she would make herself comfortable on the charts spread out on the table.'

'Be that as it may, he was soft spoken and had a pleasant personality.'

More about Captain Bird and his family

In 1939 records the family were living at 74 Christ Church Cottage next to the newly constructed Church Hall on Townhead Road. Walter by this time was a Captain – a Master Mariner – working for the Houston Line. In 1921 records he had been a Second Officer working for the British India Steam Navigation Company. His knowledge of the Indian Ocean waters was to stand him in good stead later in his epic journey.

Walter was born in 1897 so he was already 45 when he did the astonishing journey; he and the six others in the boat rowing across the Indian Ocean towards India or Ceylon. In Dore he had lived with his father William Henry Bird who was a newspaper machine printer for Loxley Brothers Limited, and mother Mary Jane, a Tailoress by profession. Records show that he had siblings Mary Helen, Fred William, Thomas Henry and Maria.

Both William Henry and Mary Jane Bird who died in 1949 and 1947 respectively are buried in Christ Church graveyard.

Where did Walter get his calling to the sea? And are there any of Walter's relatives still living in Dore?

Dorne Coggins

BMV
COSMETIC CAR REPAIRS

SCUFFED YOUR CAR?
Save up to **50%** on bodyshop costs!

MOBILE CAR BODY REPAIRS
WE COME TO YOU!

FOR A FREE ESTIMATE CALL CHRIS ON
07801 445 886
OR EMAIL chris@bmvcare.co.uk
www.bmvcare.co.uk

BEFORE

AFTER

Planning for your financial future couldn't be easier

Whittington Goddard Associates Ltd

Provide independent financial advice
from our office in Sheffield.

Our services are tailored to meet our client's
current circumstances, aims and objectives.

Whittington Goddard Associates

provides advice across a wide range of services
and offer an initial consultation at no cost or
obligation:

- Investments & Savings
- Pensions & Retirement Planning
- Life Cover, Critical Illness Cover, Income Protection
- Equity Release
- Care Fees Planning

Equity released from your home will be
secured against it.

We are small enough to care about your needs –
but big enough to cope with all your requirements

Whittington Goddard ASSOCIATES LTD

26 Causeway Head Road, Dore, Sheffield S17 3DT

Telephone: 0114 235 1623 Fax: 0114 262 0438

Email: enquiry@wg-associates.co.uk

Office: Monday to Thursday 8:30am - 4:30pm; Friday 8.30am - 2:30pm
www.wg-associates.co.uk

Dental – Medical – Physiotherapy – Acupuncture



HIGH TREES CLINIC

Specialist and Routine Private Dental and Medical Clinic located in Dore

NEW PATIENTS WELCOME

APPOINTMENTS FROM £55.00

Monitor and optimise your health with our dental, medical and physical therapy team



DENTAL

- Routine Dental Appointments
- Fixed Braces & Clear Aligners
- Fillings, Dentures & Bridges
- Composite Bonding, Veneers & Crowns
- Emergency Treatment
- Monthly Payment Plans

MEDICAL THERAPIES

- Medical Letters, Forms and Referrals
- Blood Test & Analysis
- Vaccinations
- Mole Checks and Removal
- Anti-wrinkle Treatments
- Physiotherapy & Acupuncture



0114 349 3326

37 Townhead Road, Dore, Sheffield, S17 3GD

hightreesclinic@gmail.com www.hightreesclinic.co.uk





One of our committee members, Lindsay Fox, has been instrumental in introducing more social media to help publicise our activities. As well as posters and these features we are now using Instagram to reach a wider audience. The link to this account is [instagram.com/doregardenclubsheffield](https://www.instagram.com/doregardenclubsheffield), or if you are a seasoned Instagram user [@doregardenclubsheffield](https://www.instagram.com/doregardenclubsheffield)

Tuesday 18 June – Annual Coach Trip

This year's outing will be a little further afield; we are travelling to Merseyside where we will visit two locations: Speke Hall Garden and Estate, and Sefton Park Palm House.

Our first port of call is the Palm House at Sefton Park. This venue was featured on the Antiques Roadshow at the end of March this year. The park is a green oasis in South Liverpool and opened in 1872. Thanks to a local benefactor who donated £10,000, a Palm House centrepiece was built in 1896 as a gift to the people of Liverpool. During the Second World War the glass house was badly damaged and fell into a state of disrepair such that it was closed in the 1980s. Local supporters raised enough money and with the assistance of heritage funding enabled the original building to be dismantled and restored to its present glory. Entrance to the Palm House is £2 per person and you can take a self-guided tour.

Speke Hall is a National Trust Property which overlooks the River Mersey. It is one of the finest surviving examples of a wood-framed wattle-and-daub Tudor manor house in Speke and a Grade I listed building. The house stands in grounds that are part woodland and part historic garden with colourful borders and a kitchen garden. There is access to a coastal reserve and walks along the River Mersey. There is a restaurant and tearoom.

Entrance to Speke Hall gardens is free to National Trust Members (who should bring their NT membership card) or £10 for non-members. The house will not be open.

We leave from outside the newsagent on Causeway Head Road. The timings will be advised nearer the time. Interested? Please contact Janet Hewitt on 0114 235 0434 as soon as possible.

Wednesday 19 June - Flowers of the Algarve by Ken Balkow

Ken is a regular local speaker at the Club having given talks on wildflowers in the Porter Valley and along the Tinsley Canal. He is an author and has been a columnist for The Daily Telegraph.



This time he will introduce us to the rich Mediterranean flora of the Algarve region of southern Portugal. The Algarve is a much-loved holiday destination for British tourists. Despite the proliferation of golf courses and holiday villas, large swathes of coast have been turned into nature reserves. Because of its mild, damp winters and hot dry summers, it is a paradise for wildflowers. You can expect to see some wonderful images.

Wednesday 17 July – Experience of a Chatsworth Trainee Gardener

The Chatsworth Estate has a record of providing training and development opportunities, amongst others for their young employees, ranging from apprenticeships to graduate trainees. Last July we heard from Mick Brown, the Production Garden



Manager at Chatsworth Gardens who also leads on the training and development of students and apprentices at the gardens. This month we are pleased to welcome two of those Chatsworth trainees, Hannah and Joe. Joe and Hannah started work at Chatsworth at the end of August 2023 and will spend a year with the Gardens team learning everything there is to know about how an historic garden is managed. Chatsworth is one of many famous gardens which offer this opportunity under a National Garden Scheme supported initiative. They will share their perspective on being trainee gardeners in over 105 acres of historic grounds.

The Historic and Botanic Garden Training Programme began in 2006, with an aim to ensure that the skills needed to work in a historic or botanic garden were passed on to those passionate about a career in horticulture.

Pauline Drissell

Carter Knowle Computing Limited

For friendly and professional help and advice on home computing problems:

- Emergency System Recovery
- Networks (wi-fi, home broadband)
- Email, Internet Security (Anti-Virus / Firewalls)
- Transfer of data between old/new PCs
- Set up of new equipment (printers/scanners etc)

With reasonable and competitive rates please contact:

Rob Edwards on 07711 718455
rob.edwards@CarterKnowleComputing.co.uk
www.carterknowlecomputing.co.uk



OUTRAM FIELDS
CINNAMON LUXURY CARE

Opening DAY

OUTRAM FIELDS CARE HOME WAS OFFICIALLY OPENED ON MARCH 12TH WITH A RIBBON CUTTING CEREMONY BY PAMELA LIVERSIDGE, DEPUTY LORD-LIEUTENANT OF SOUTH YORKSHIRE.



The opening event saw guests explore the home's purpose-built amenities, such as on site hair salon, café, and cinema. There were also canapés, fizz and a wonderful performance by the Rock Choir South Yorkshire at the event to entertain guests.

Rock Choir South Yorkshire (can you spot a familiar Outram Fields face?).



Photos courtesy of Grapevine Magazine, Sheffield.



Outram Fields General Manager Donna Pierpoint (left) pictured with Pamela Liversidge, Deputy Lord-Lieutenant of South Yorkshire.



Claire Hoyles our Home Admissions Advisor (left) and General Manager Donna Pierpoint.

RESIDENTIAL CARE | DEMENTIA CARE | RESPITE CARE | POST OPERATIVE CARE

Luxury Care Home in Sheffield
Outram Fields Care Home, 250 Twentywell Lane, Bradway, Sheffield S17 4QF
www.cinnamoncc.com/outramfields

New Interactive Squash Court at Abbeydale – the first in South Yorkshire

Abbeydale Squash and Fitness Club has recently installed a new Interactive Squash iCourt – the only one in South Yorkshire.



Interactive Squash is a game-changing fusion of sports and technology. Immersive projection graphics showcase exciting video-game-style play with many training routines and games for all ages.

The system is currently installed in only a few locations in the country, including Center Parcs, where it is proving to be extremely popular.

Interactive Squash turns the front wall of the court into a

giant interactive screen with many training routines and games that respond to a ball hitting the wall. It has applications for squash and racketball training for all levels, and a big variety of interactive games from retro arcade to more creative and educational ones, for all ages, all developed to meet fun and entertainment standards while improving players' skills like hand-eye coordination, speed, strength and reaction times.

The iCourt at Abbeydale is available to both members and non-members, with games and training activities to suit all ages and abilities. From Squash Invaders (a game like the classic arcade game) to Monster Match (think Candy Crush meets Monsters Inc.), there are tons of fun games for the little ones or the big kids! The more experienced squash player will find that the iCourt is not all about fun and games - there are numerous training drills and activities designed to hone your skills. Area Focus will sharpen your accuracy on court, while Ghosting tracks your movement as you move as quickly as possible around the court. Other current favourites of the staff at Abbeydale include Darts, where players can compete by hitting or throwing balls at giant dart boards; Ocean, where players must protect the happy fish of the sea by scaring away the nasty fish; and Idol Rush, a frenetic game in which opposing teams compete to break down a totem pole first. The range of games and activities, which numbers more than 35 at present, is set to grow further with continual developments occurring over in Munich where the manufacturer is based.

The iCourt can be booked by non-members subject to guest fees. Family and group guest bookings are available for up to six non-members able to use the iCourt for interactive giant screen fun (many of the games can be played by throwing a ball - of varying sizes – instead of using a racket).

You can check it out at www.abbeydalesquashandfitness.co.uk/icourt.

Ball Blast Interactive Parties are now also available for booking on the Abbeydale iCourt. A Ball Blast party consists of one hour of supervised activity on the court with a dedicated Party Leader for up to twelve participants, with an optional 1-hour room hire for refreshments in the spacious studio, situated just outside reception. Refreshments can be catered by Abbeydale Squash and Fitness for an additional charge. Parties can be booked now, by calling reception on 0114 262 0550, or emailing parties@abbeydalesquashandfitness.co.uk.

Tim Eldridge

We are a family run business based in Sheffield. We provide high quality, weatherproof and maintenance-free roofing systems made to last a lifetime.



WRAGG
ROOFING & BUILDING

THE FIBREGLASS SPECIALISTS

A PERMANENT SOLUTION TO YOUR FLAT-ROOF PROBLEMS

- No seams, cracks or leaks
- No stones, moss or lichen
- Tough enough for balconies
- Available in a range of colours
- Can incorporate insulation to reduce heat loss
- We supply a superb product guaranteed to last
- 30-year durability (rated by the British Board of Agreement)

WE ALSO SUPPLY AND FIT uPVC SOFFITS, FACIAS AND GUTTERS

EXPERTS IN ADVANCED FIBREGLASS ROOFING SYSTEMS

www.wraggroofing.co.uk

Call us today to arrange a **FREE** no-obligation quote



07774 797000






Brook joinery and property maintenance

- Replacement misted glass units
- Guttering and roofline products, fascia & soffit replacement
- Roof repairs, replacement tiles and slates, flat roof repair
- Bay roofing repair / replacement
- All joinery works – internal / external frames and doors
- Most property repair done
- Handyman service

Help keep your local trades busy

Paul Brook

10 Kings Coppice, Dore, S17 3RZ

07899906484

brooky1@icloud.com



- A Family Business, Established 1954 -

At Dore Service Station we are proud to be known locally for going that extra mile.

- We offer a full range of dealer equivalent motor vehicle services including **M.O.T** tests, small and comprehensive **services** and **diagnostics**.
- We provide an emergency local recovery and **breakdown** service.
- Can arrange a **free reminder call** when your car's service and M.O.T are due.
- Courtesy wash
- **FREE COLLECTION & DELIVERY***
- **FREE Courtesy car** available.

Call to book your car in today or come in to speak to one of our members of staff, we'll be more than happy to help!

Dore Service Station Ltd.
12 Townhead Road, Dore
Sheffield, S17 3GA. 0114 236 4691
info@doreservicestation.co.uk

BUILDERS

PAGETS

MERCHANTS

SHEFFIELD'S INDEPENDENT FAMILY-OWNED BUILDERS MERCHANTS



OPEN TO TRADE AND PUBLIC MON to FRI 7:00am till 5:00pm | SAT 7:30am till 12:30pm

pagets.co.uk

sales@pagets.co.uk

0114 2923000 or 0114 2340485

94 Broadfield Road, Sheffield S8 0XL

The next batch of Wyvern Walks covering June to September can be found on our website at dorevillage.co.uk/pages/wyvern-walkers-programme-of-walks and on our noticeboards. If you can't access these sources contact me (keith.shaw@dorevillage.co.uk or 07778 422 910) and I'll send the list to you.

The two walks here have been chosen for the variety of views that they offer. Both start from the large layby on the A57 just above Cutthroat Bridge (Grid Ref: SK 2168 8742).

Cutthroat Bridge gets its name from a grisly murder that took place about 400 years ago when a man was discovered nearby with his throat cut. Although still alive and taken to Bamford Hall he died from his injuries. Later, in 1995, a man was beheaded by his stepson, assisted by two others, close to the bridge and the body dumped there. The perpetrators were caught and sentenced to life in prison.

Hordron Edge and Bamford Edge

This is an easy walk that takes in views over desolate moorland and Ladybower Reservoir, as well as going through ancient oak woodland with moss covered rocks. The walk is suitable for any time of the year but parts of it are very muddy in wet weather. Dogs aren't allowed on parts of this walk as the land is used for rearing grouse.

Start: the large layby on the A57 just above Cutthroat Bridge (Grid Ref: SK 2168 8742).

Distance: 5m/8km

Time: 2.5 hours plus time to sit and enjoy the views.

Toilets and seating at Heatherdean Car park by Ladybower Reservoir.

From the car park take a short but steep footpath up on the left about halfway along the layby and follow this to Cutthroat Bridge (1). Now cross over a stile on your left by a gate and walk along a wide track through a small plantation of pine trees. Shortly after emerging from the trees take a path on the left leading straight uphill until it levels out at another wide track. Turn right here and shortly you'll come across an ancient stone circle on your left (2) that's worth a visit. Continue along the track until it descends and swings right to cross a stream. Follow the path uphill until it levels out and splits. Take the right fork and continue to the next split and fork right again, walking past some grouse butts. The track becomes a little indistinct for a short stretch but then becomes clear again and takes you to a stone wall (3). Turn left here and follow the wall to a rocky outcrop marked as Pillars on the map. This is a good spot for coffee and enjoying the views over Ladybower.

Shortly after the Pillars the track splits again. The right hand path descends to a stream and then rises up the hillside opposite but the approach to the stream is steep and the crossing is awkward so it's easier to take the left hand path that follows the contours of the hillside in a sweeping arc. Continue on this path until you get to Bamford Edge (4). From here you descend into woodland. There's an obvious path immediately opposite but there's an easier descent just a few yards to the right. Whichever you take follow it through the oak wood and continue the descent alongside a wall until you get to a stile on your right. Cross into the woods and carry on for a few yards following some

power lines to an obvious path to the left which descends towards the road. Go down here to a T junction, turn right and follow this path to Heatherdean car park (5). Walk through the car park and exit to the road. Then turn right and walk along the footway to the A57, turn right again and cross over the road by the Ladybower Inn (6). The road is busy with fast moving traffic so care is needed here. Just beyond the Inn take a path that rises to the left. Follow this all the way to Highshaw Clough (7) and follow the stream down to Cutthroat Bridge and cross the road. Now retrace the initial part of the walk to the car park.



Ancient oak woodland. Photo: Fiona Bailey-Smith





Peter Byrom Audiology

Summer jaunts in surround sound

Hear the sea better than
ever before without the
need of a doctor's referral



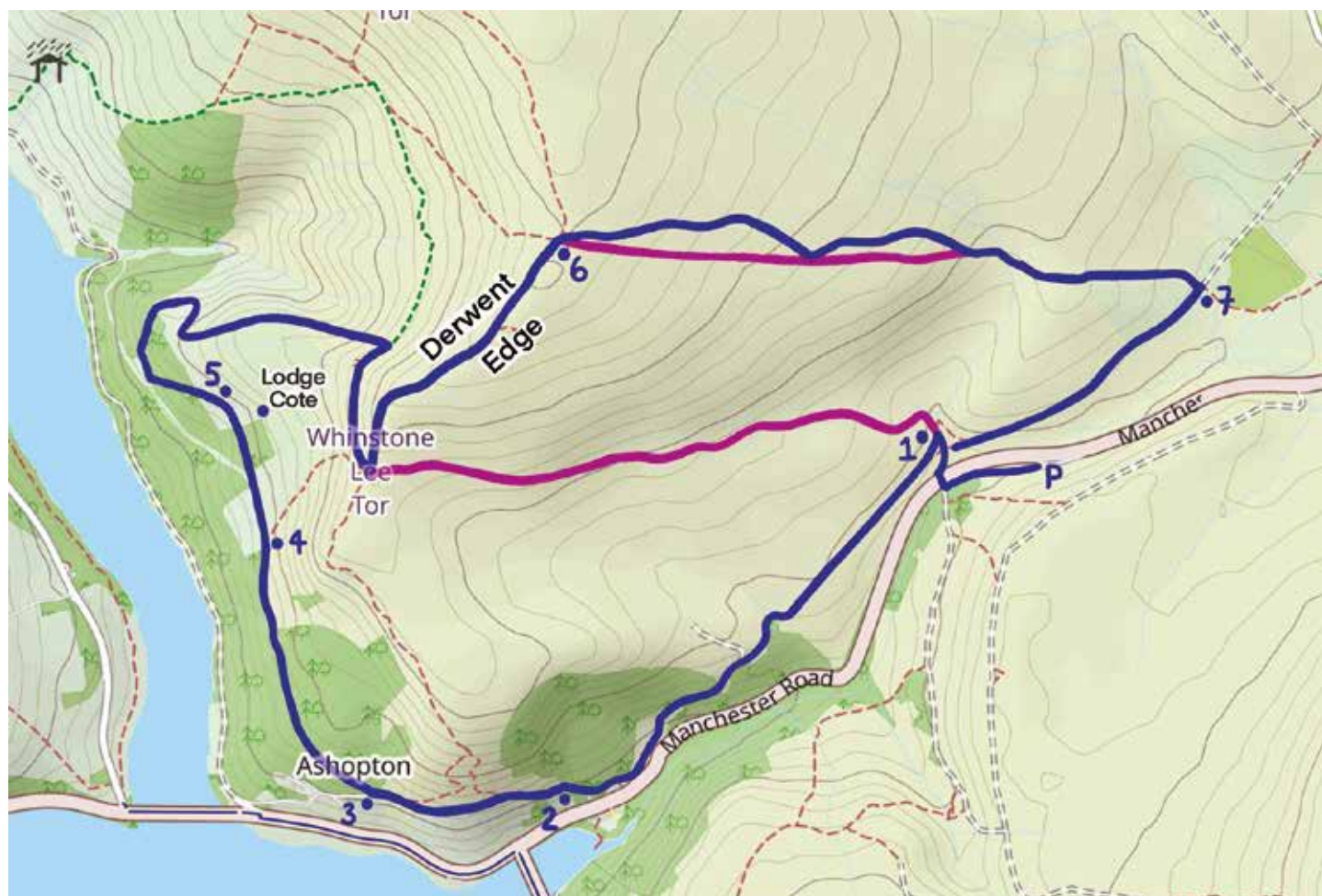
- A full range of amazing Phonak hearing aids
- Wax removal
- Hearing protection
- Pediatric clinics
- Balance assessments
- Tinnitus assessments
- Lenire® therapy
- Medico legal testing

0114 233 1800
peterbyrom.co.uk

Practice Address
Thornbury Hospital
Sheffield, S10 3BR

Home Visits
12 Causeway Head Rd
Dore S17 3DT





Cutthroat Bridge, Lodge Cote, Derwent Edge

This walk is slightly harder than usual and takes in woodland, moorland and excellent views.

Start: the large layby on the A57 just above Cutthroat Bridge (Grid Ref: SK 2168 8742).

Distance: 6.5m/10.5km

Time: 3 hours.

There are no toilets on this route.

From the car park take a short but steep footpath up on the left about halfway along the layby and follow this to Cutthroat Bridge, then cross over the road and walk up the path by the side of the stream for a few yards before taking a hairpin turn to the left (1) and following a wide level path towards woodland. Continue along here for just over a mile, passing to the rear of the Ladybower Inn (2) and arriving at a gate on your right (3) that leads into woodland. Follow the path through the woodland until you reach the end of the woods on your left and enter open country. A few yards past this point there's an opening in the wall (4) on your left with a solitary gate post. Go through the opening and proceed along a faint track that follows the contour of the hill. After a short while the path becomes more distinct and enters a small stand of conifers. The path through here is uneven and partially obstructed in parts by fallen trees and branches but passable with minor diversions. The path emerges from the wooded area through a wall, continues along the contour of the slope, and shortly meets a wire fence at a broken gate (5). Go through the gate and down a distinct path that descends through woodland and then curves right and joins a forestry track coming up from your left. Follow the track through what was once a gate into open country. The track now curves to the right and ascends

the hill to a wall. Go through the wall, turn left and walk uphill with the wall on your left. The view opens up from here and it's worth pausing occasionally to take in the scenery. Cross into the next field and continue following the wall, ignoring what looks like an obvious track branching off to the right. At the top left corner of this field exit and walk along a narrow track keeping the wall on your right. To the left of this track is a steep slope and care is needed on this stretch but the views both ahead and behind (to Ladybower reservoir) are worth pausing to look at. This track ascends to meet a much wider one below Derwent Edge. At this point turn right and walk on until you get up onto the Edge (with more enjoyable views). Straight ahead is a track that descends to Cutthroat Bridge, take this if you want to cut the walk short (shown in pink on the map). Otherwise turn left up an obviously well walked path along the Edge and you will be rewarded with even more good views both along this stretch and the ensuing descent. After just over half a mile you reach a crossing point with a signpost (6). Take the path to the right labelled Moscar but pause here because there are two routes you can take. The obvious one is a narrow, stony and awkward path (shown in pink on the map). Slightly higher up is a much wider and easier track that's better underfoot and allows you to look up and enjoy the scenery.

Both tracks meet up just before you cross a stream. Continue until the path curves to the right down a slope and then left. At this point go through gate on your right (7) and follow a wide track back to Cutthroat Bridge, crossing the stream that runs under the bridge. Crossing the stream can be tricky so choose your crossing point with care. You will also have a short scramble up some rocks to get to the path that descends to the bridge. From the bridge return to the car park.

Wyvern Walks by Keith Shaw

Express Installations

Suppliers and installers of U-PVC windows and doors

10 YEAR GUARANTEE

We can expertly install...

- Energy rated uPVC Windows
- Sliding Sash uPVC Windows
- High security uPVC doors
- Sliding and French Doors
- Bi-folding Doors
- GRP Composite Doors
- Solidor Timber Composite Doors
- Conservatories & Porches



Email us now at - pcooke3@sky.com
Or call 07831 167 587



SILVERDALE GARDEN SERVICES

Specialists in all aspects of professional tree surgery

- Trees re-shaped/felled
- Stump removal & grinding
- Hedges & shrubs cut, reduced, or removed
- Garden & site clearance
- Section felling
- Gale-damaged trees made safe
- Pruning & dead-wooding
- Firewood logs & wood chippings for sale
- Gardens tidied
- Grass cutting
- Garden rubbish removal
- On site log splitting

Card payments accepted

For a free price estimate contact Bill Bingham

0114 236 0592 ♦ 077674 92645

Fully insured & safety conscious

SPARRK PV LTD

01142 866252

sparrkpv@gmail.com www.sparrkpv.co.uk

Specialists in pioneering energy solutions for the modern electrical landscape

Experts in:

- Solar Photovoltaic (PV) Panels,
- Battery Storage,
- Electric Vehicle Chargers.

As many of you are aware, 2024 is an anniversary year for Totley Library – fifty years since the library first opened to the public on 26th February 1974, and, in September 2024, ten years since Totley CRIC took over the library from Sheffield City Council as a volunteer run charity. Now over 100 people are involved in keeping it open as a lending library and community hub; during 2023, 107 volunteers worked a shift. Of that number, 19 original volunteers from the reopening ten years ago are still regularly involved! To mark this occasion, we have below a number of fundraising and celebration events taking place throughout the year. We hope the community will join in with us – we look forward to welcoming you.

Anniversary celebrations – Save the Dates

- Saturday 11 May – Community Plant Sale (annual fundraiser)
- Saturday 15 June – Picnic in Green Oak Park with live music
- Friday 12 July – Mamma Mia! Here We Go Again: a Sing-A-long (Film event)
- Friday 20 September – Folk Music Evening
- Sunday 29 September – Totley Library 10th Anniversary Big Celebration
- Sunday 24 November – Totley Library Christmas Fair

Our celebration community project involves permission to use a poem by internationally renowned poet and artist Imtiaz Dharker. Her poem 'The Welcome' is about books, reading and the way libraries provide a welcoming space for those who visit them. Working with local schools, we will be asking pupils to illustrate the poem and displaying some of the artwork in the library. One piece will then be chosen to illustrate a copy of the poem for permanent display in the library foyer. For details of this and other events keep an eye on our website www.totleycric.org.uk/ and social media posts.

Julie Kitlowski, Chair, Totley CRIC

New Book Additions

We have many new adult titles and children's books now available. We also have a display of a few local authors and illustrators and have purchased copies of their newest books to give you the opportunity to read some of their work. Let us know if you have suggestions of any local authors you would like to see represented in the library. You can reserve books and make recommendations online via our website or through our library suggestion box.

Please check that you haven't got any library books hidden in unexpected places! We currently have over £900 worth of our own library books (Orange Sticker) that have been out for more than 12 weeks and may be marked as lost. Now that there are no fines for late returns, it is easy to forget. Please remember that if you do not return books, this depletes our library stock and there are fewer books for other library users. We encourage all users to return or renew on time. Lost or damaged books are charged for at replacement value.

Totley Library Community Cinema

Thanks to funding from the South West Community Ward funding pot, Totley Library secured a grant of £550 to support our FREE Thursday matinee films for over 65s during our 10th anniversary year. This will mean that we will have a film each month throughout 2024, including July, August and December. Upcoming films are:

- Thursday 25th April 3pm – Save the Cinema (12) Starring Samantha Morten and Jonathan Pryce.

- Thursday 30 May 3pm - The Miracle Club (12) Starring Kathy Bates and Maggie Smith.
- Friday 24 May 7pm and Thursday 27 June 3pm - The Great Escaper (12) Starring Michael Caine and Glenda Jackson.
- Friday 21 June 7pm and Thursday 18 July 3pm – A Haunting in Venice (12) The return of Poirot played by Kenneth Branagh.

Our August matinee on August 22 at 3pm will be a 'People's Choice' – suggest your favourite film from the last ten years by dropping a recommendation into our suggestion box in the library or tell us via our online film survey. Our cinema programme is available for booking in person or by calling 0114 236 3971. Refreshments will be served at all films. Raffle tickets: £3 per person for Friday films. Thursday matinee films are FREE for over 65s.

Totley Library Community Art Space - Original Art and Prints for sale

New art works by local artists Gina Hodges, Matthew Lee-Potter, Anna Stephenson, Judy Randle and Dana Kucewicz are currently on display in the Adult Library at very competitive prices. We may have just what you are looking for to brighten up a wall or to give as a unique gift. The library is now looking for local artists who would like to exhibit in July 24 and Oct 24. For further information, please call in at Totley Library and take a look at the Art Space or email carolynjallcroft@gmail.com for further details.

Pamela Johnson



CW Roofing
New Roofs • Repairs • General Maintenance

Telephone: 0114 236 3455
Mobile: 07966 011825
Dalewood Road, Beauchief

Sheffield Vulcan Rotary Club

Perhaps you noticed us at the Sheffield Half Marathon finishing line where we helped to provide refreshments to the finishers, or as you passed by Beauchief Gardens you wondered who those cheerful hi-vizzed souls were. (We have spent many months renovating, restoring and planting to bring the gardens back to former glory.) Maybe you kindly donated to Marie Curie Cancer Care at Morrisons at Meadowhead and chatted with the collectors in the very silly hats?

Most of our charitable work is for the benefit of both old and young within our local community, and Sheffield Vulcan Rotary Club thrives on different challenges. For example, and as part of our environmental work, we have planted thousands of bulbs and many hundreds of trees of various sizes and varieties around Sheffield. We have many activities including recycling unwanted glasses and sourcing books to help younger disadvantaged children. We have links to the education system, through which we help students at school and college, such as carrying out "mock" interviews using our long and deep experience so that they can gain confidence by meeting a person they've never encountered and receive feedback on their presentation skills. Through the Pitchfork Trust, we are also able to take children from a local school annually to the panto (oh yes we do!).

We collaborate with other Rotary Clubs both in the UK and abroad and have funded shelter and water purification aid for distressed families in both conflict and natural disaster areas, and last Christmas we also put together boxes of toys, books, and other items to be enjoyed by Ukrainian children when they were confined to a bomb shelter.

Many charities are suffering through lack of funding, mainly due to the current economic situation. The Club in the past twelve months has supported over thirty of those organisations, mostly local, by raising over £25,000 through our annual Golf Day at Sicklehome, a Christmas Raffle, the generosity of members and friends, and grants from the National Lottery and J G Graves Trust.

These are just some examples of how we service our community by giving time and enthusiasm, but please don't think it's all work. We meet once a week (not compulsory!) at the Norfolk Arms at Ringinglow, for a meal and fellowship. Social visits have included a trip down a coal mine, walks around over twenty Derbyshire villages with a knowledgeable guide, and we have toured a workshop that makes hand-made boots. A keen walking group steps out most weeks, and Club members have been known to demonstrate their lack of skill at both crown and ten pin bowling.

If you're attracted to the idea of joining Sheffield Vulcan, we'd be pleased to welcome you to a meeting; contact us at secretary@vulcanrotary.org.uk

Alan Brown
Rotary Club of Sheffield Vulcan

Dore People

A Generation of Public Service

In conversation with the Right Worshipful Lord Mayor of Sheffield, Councillor Colin Ross



As our local councillor, Colin Ross, comes to the end of a year as our Lord Mayor I had the privilege of talking to him about the role and his reflections. My overriding impression was how much we all benefit from the work he and his wife Sue, our Lady Mayoress, do every day on our behalf.

Colin had invited me to the Town Hall and the interview took place in the grand surroundings of the Lord Mayor's parlour. I was surprised by the scale of the parlour, much larger than I had imagined. The Town Hall was built in 1897 and the rooms are lined with wood panelling with beautiful friezes in plaster and carved wood, demonstrating aspects of life associated with our city. The parlour itself is no exception, being well lit with large windows overlooking Pinstone Street and the end of Fargate, a large fireplace (seen in the photograph opposite) and interesting displays in cabinets.

I was interested in why Sheffield had a Lord Mayor and some other cities had Mayors. This is explained by Royal Prerogative and there are only 23 Lord Mayors in England, two in Wales, two in Northern Ireland and, in Scotland where they have Lord Provosts instead of Mayors, there are another four. Queen Victoria conveyed this honour on the city in 1897 when The Duke of Norfolk was Mayor for one year and then Lord Mayor for his second year. The term of Lord Mayor is usually for one year, the other exception to this was during the recent pandemic. Lord Mayors are chosen in rotation through the political parties based on a points system according to the number of councillors they each have. An adjoining room we visited (Colin described as the Rogues Gallery) has black and white photographs of the Lord Mayors around all the walls. Before 1897 Sheffield had some famous mayors, William Jeffcock being the first in 1843. There followed famous steel men Mark Firth, John Brown and Thomas Jessop. George Bassett the confectioner was another industrialist to hold the honour.

Many of you will know that Colin has lived in Sheffield since he came to study geology here. He subsequently became a teacher at Firth Park and then Thomas Rotherham College, moving to his first house in Dore in 1979. He became a councillor in 1994 and has built up his knowledge of the city, constitutional matters and

FIRS FARM SHOP

Ringinglow Rd S11 7TD

Home reared Beef, Lamb – joints, steaks etc
Christmas Geese & Turkeys

Home made sausages, burgers & Home cured bacon
Eggs & potatoes

Open Thursdays 1pm-5pm
Fridays & Saturdays
9am until 5pm

Tel 01142301169

www.firsfarmsheffield.co.uk



how to chair committees. All experiential learning which has been invaluable during this year, when he has had to chair some difficult council meetings and rise above day-to-day party politics.

Colin has brought his interest in education, training and apprenticeships as a theme to his work this year. Sheffield has moved from being essentially a steelmaking city to one of sophisticated engineering companies alongside specialist steel manufacture for the aerospace industry and others. There is opportunity for graduate engineers but also for apprenticeship schemes, thus harnessing local talent. He has used his time to encourage large companies and small and medium-sized enterprises to network and gain confidence in setting up apprenticeship schemes.

Apart from chairing the full council meetings, invitations are coming in all the time for his attendance at events. These are wide ranging, from opening buildings to celebrating anniversaries and attending civic events. He has an office staff of one civic manager, two part-time mace bearers and a part-time personal assistant. I wanted to ask about his mode of transport to events; walking to local events in the city centre accompanied by his security, a chauffeur driven car to others. During the 20th century the car was a Rolls Royce. Over the last 20 years a Jaguar has been in use. The replacement will be an electric vehicle and this is being researched as the Lord Mayor and Lady Mayoress have certain specifications related to robes and long dresses.

I was intrigued to know about the ceremonial robes and chain of office. There is one set of robes, and, for Lord Mayors, they are black with gold trimmings. Mayors have red robes. There is only one set of robes that has to fit people of all sizes. They last about 20 years before needing replacement. For most events and meetings, he will wear his chain of office over his suit. It's quite heavy and he showed me how his member of staff unlocks it, brings it to him and attaches it to each of his suit shoulders. He could not put it on unaided. The chain is stunning and has individual links engraved with the names of past Lord Mayors. The older links have been removed and are on display in the cabinet in the parlour. The story behind the chain of office is amusing. In 1855 the Mayor, as he was then, attended the Paris Exhibition without a chain of office. All the important dignitaries had these. This was very embarrassing for the mayor, who insisted that the present chains were made in 1856.

I wanted to know if there were any stand out moments from this year. Without hesitation Colin said that his inauguration inevitably stands out. He invited his family and friends from each stage in his life. The formal ceremony in the council chamber was followed by a reception and meal next door. The following day he was invited to the Cutlers' Feast, a very formal white tie and tails event at Cutlers' Hall. Other vivid memories, although there are many, are firstly the visit to Netherthorpe Primary School on its 150th anniversary in the same building. All the staff and pupils were dressed as Victorians and behaved accordingly throughout the day. He reviewed the school inspector's report dated 1873. A second memory is related to football. He is non-partisan when it comes to Sheffield football teams, but it was rather special to be in the Royal Box at Wembley when Sheffield Wednesday were in the play-offs.

Colin then goes on to say that so much of what is happening in Sheffield is underpinned by volunteers. He has been so encouraged by what they have achieved for their communities and indeed for themselves. He remembers the volunteers of Sheffield Cemetery who were in turn remembering the casualties of the Great Sheffield Flood of 1864. He commented on the work they have done to carefully restore the monuments and care for the landscape. Similarly, he thinks of the volunteers closer to home in Whirlowbrook Park and Whinfell Quarries.

There are always things we would do differently with the benefit of hindsight. When asked about any advice he would hand on to his successor he replied that he would have requested to visit more venues where he had an interest and could make a difference by virtue of his experience and networks. An example was to request a visit to the McLaren factory, which he thoroughly enjoyed. A second piece of advice for his successor would be to delegate the

organisation of the Lord Mayor's Charity appeal. This year Colin chose to raise money for St Luke's Hospice's new cuddle bed. He has succeeded with the final larger event of a Gala Dinner, but in retrospect it was hard work and there are people who are better qualified than the Lord Mayor to organise an appeal.

What advice would Colin give to a young person setting out on a career in local politics today? The main driver should be a desire to help the local community; be a local champion. You will never change the world overnight, but you can change things with dogged persistence.

As Colin referred to earlier, the Lord Mayor is one part of a team of many. Among that team is his wife, Sue, who as Lady Mayoress has played an important role throughout the year. She has attended the majority of the events with Colin and has also had solo engagements. It's very helpful to have two people at events in order to talk to as many people as possible. The Lady Mayoress's chain of office is particularly attractive and she has quite a few requests to borrow it!

Colin met Susan whilst they were both studying Geology at Sheffield University. Like many graduates they decided to stay and make Sheffield their home. Susan was also a secondary school teacher, initially at Ecclesfield School but for the last nine years of her career she taught at King Egbert.

So, what of the future? After thirty years of public service Colin decided not to stand for re-election in May but has many plans for how to spend his time. He will not be missing the barrage of emails and the lack of control over his time. Taking back control so he can go walking more and play golf again is very appealing. There are some projects which interest him, which he will pursue, such as the Sheffield Home of Football Charity and promoting the amazing history of Mary Queen of Scots' imprisonment in Sheffield over 14 years.

At the end of the interview Colin wanted to talk about the people of Dore. He wants to thank everyone for the support and encouragement he and the Lady Mayoress have been given so generously this year.

Anita Campbell



SOLD SUBJECT TO
CONTRACT

(0114) 2746400
www.stavesestateagents.co.uk



STAVES
estate agents
Local Agent, Local Knowledge



Successfully selling in your area!

We are experiencing very strong demand for properties within S17. If you are considering selling, call us today for a free without obligation market appraisal of your home. We have genuine buyers waiting!

By instructing Staves to sell your property you will benefit from the following:

- ✓ Advertising on the following websites: Rightmove, Zoopla, OnTheMarket, Prime Location and Staves
- ✓ Eye catching For Sale board
- ✓ Professional photography
- ✓ 3D Floor plans
- ✓ Drone photography
- ✓ Accompanied viewings
- ✓ Window displays in our prominent premises
- ✓ Ample customer parking
- ✓ Extensive promotion of your property via social media
- ✓ Negotiator visit to see first-hand the best features of your home
- ✓ Friendly and thorough service from our professionally trained team
- ✓ Competitive fees with nothing to pay upfront
- ✓ No sale no fee
- ✓ Company director personally overseeing your property
- ✓ Extensive experience and knowledge of the local area
- ✓ Vast experience within Estate Agency industry
- ✓ Professionally qualified
- ✓ Proud winners of highly respected national awards

Alternatively if you are considering letting your property, please contact our dedicated letting department to find out more about our current offers.

(0114) 2746400

2A Bushey Wood Road, Dore,
Sheffield, S17 3QB



info@stavesestateagents.co.uk | www.stavesestateagents.co.uk



STAVES
estate agents
Local Agent, Local Knowledge



Welcoming Space

Our Welcoming Space, open each Wednesday from 10.30am to 1pm, continues to offer an opportunity to meet and chat with others over cups of tea or coffee, play board games, read newspapers and also enjoy a light lunch. All this is free of charge, but any donations are appreciated. At the present time we may be able to offer some transport to and from the Welcoming Space, with a charge of £3. For more details please phone us on 0114 235 1085.

Working with the Local Area Committee's Community Development Worker we will be having a "Pop-up Information" session, roughly every two months. There will be information and leaflets available on a variety of services including Cost of Living Support, together with staff from a specialist organisation. The future dates arranged are:

- 17th July – Deaf, Blind Society
- 11th September – Specialist (to be confirmed)
- 20th November – Citizens Advice

If you are needing information or advice on a range of services, please pop in to one of these sessions.

Rosemary Memory Café

On the first and third Tuesday afternoon of each month Age UK Sheffield hold a memory café in our hall. This is an opportunity to socialise and enjoy spending time with your loved ones who have dementia. Together with Christ Church we support this initiative by providing volunteers to help. Contact Age UK Sheffield on 0114 250 2850 for more information before attending.

Thursday Morning Communion Service

This quiet, reflective service, open to all, is held weekly at 10.30am and is organised by friends from Christ Church.

Ladies' Tuesday Group

We have had a very entertaining year so far at our monthly meetings.

At our October meeting Sheila Dyson spoke about "Derbyshire from the Air". Complemented by aerial photographs taken from a small aircraft, we were treated to a wonderful trip around some of the popular places in the county that we all know and love. Seen from above they were quite breathtaking.

November's subject was quite different but equally awesome. Kate Allatt gave a talk about her personal experience of "Running Free – Breaking out of Locked in Syndrome". Seeing Kate speaking about how she spent many, many months unable to move, communicate, eat and barely able to breathe and how she came through her experiences to return to normal life was truly amazing.

In December we celebrated our Diamond Jubilee.

February brought Kathleen Cox to tell us about "The Allure of Olive Trees". With the aid of slides she introduced us to southern Spain where olive trees grow in abundance. Her talk made us realise just how mystical olive trees can be.

Jane Price joined us in March with "A Funny Thing Happened on the Way to the Crem". Jane is a vicar's wife who certainly sees the humorous side to life. She had us rolling with laughter at her anecdotes.

In April, Janet Stain brought us "Unmentionable Foundations".

All this and still two more speakers to come over the next few months. May sees us "Climbing in Peru" with Ian Webb, and finally, in June, Ken Balkow will show us some of the varied and unusual plant life in "Wild Plants in the Porter Valley".

So, if you are looking for a group to join where members are really friendly, enjoy a chat over a cuppa after listening to a varied programme of talks, then do come and give us a try. We meet on the second Tuesday of the month in the Methodist Church Hall at 2.30pm.

We are open to all ladies and would love to meet you.

Our chosen local charity for 2023-2024 is "More in Dore" who are raising funds to provide a new children's playground on Dore Rec. Throughout the year we have fundraisers for the charity at our monthly meetings, but our main fundraiser this year will be on Saturday June 29th. As part of Dore Festival there will be an exhibition about the History of Dore in the Old School opposite the Methodist Church, and on that day we shall be serving coffee, tea, juice, biscuits and delicious homemade cakes in the Church Hall from 10.30-12.30pm & 2-4pm. Do come and join us and help raise funds for this extremely good cause.

Room Hire

Our hall is an ideal venue for children's parties, (sorry no bouncy castles!), family get-togethers or one-off or regular meetings. For details and more information about our church and activities see our website at www.doremethodist.org.uk

John Bailey

G9DESIGN
CHARTERED ARCHITECTS

Award winning architectural design,
from concept to completion.

arb Architects Registration Board
RIBA Chartered Practice

Tel : (01433) 651 335 • info@g9design.com
Brookfield Lodge, Main Road, Hathersage, S32 1BB.

GWS
Technology Solutions

PC Problems, Repairs, Servicing, Setup No Job Too Small
Wireless & Internet Setup Apple Macs Data Transfer
New PCs, Laptops, Upgrades Tuition Safe PC Disposal
Tablets, iPads, iPhone, Setup & Tuition Smart TV, Media box
Wireless/Airprint printers Wireless/ Internet boosters

**** For All Your PC & Technology Needs ****

Guy Senior
Phone: 0114 2352662 Mobile: 07890030453
Email: guy@gwstech.co.uk
Web: www.gwstech.co.uk
GWS, 5 Conalan Avenue, Bradway, Sheffield S17 4PG



GasMarkOne

Plumbing & Heating

All aspects of plumbing, heating and gas work undertaken.

- COMBI BOILER INSTALLATION & SERVICING
- SOLAR HEATING
- UNDER FLOOR HEATING
- BOILER & CENTRAL HEATING CHANGING & UPGRADING
- BATHROOM DESIGN & INSTALLATION
- WETROOM
- WATER LEAKS
- ADVICE ON ENERGY SAVING



www.gas-mk-1.co.uk

For a free no obligation quotation call
0114 2307370 07970 498553

THE Glen
Private Nursing Home



The Glen Private Nursing Home

Contact us on **0114 2365580**

www.theglenprivatenursinghome.co.uk

enquiries@theglenprivatenursinghome.co.uk

Visit us @
224 Abbeydale Road South,
S17 3LA



Caring for the local landscape for over 25 years



TREES - Felling, pruning & advice
HEDGES - Trimming, lowering & removal

07393 878091

www.totleytreecare.com

steve@totleytreecare.com



QUALIFIED ARBORIST • FULLY INSURED

We offer a very tidy service with all green waste fully recycled



Forty Years of Age!

As many of you will be aware, this year Transport 17 is celebrating forty years of serving the community, supporting older, isolated individuals. This achievement was celebrated at our Spring Fayre Celebration event on the 23 March at Dore Old School. We would



The Lord Mayor and Lady Mayoress with some of the T17 volunteers and a minibus

like to say a big thank you to all those individuals who helped in the preparations and the planning for the event, as well as those that came and celebrated with, and supported, Transport 17 on the day. In particular, the generosity of Ruth and her volunteers from Dore Old School was integral to the success of the event – thank you. A big thank you also to the Seven Hills Jazz Quintet who entertained us with their music, the local stall holders who joined us, the volunteers from Sky who provided invaluable help, and all those who donated raffle prizes, Easter chocolate for the bonanza stall and homemade cakes. It was a pleasure to welcome the Lord Mayor of Sheffield, Colin Ross, and the Lady Mayoress, Sue. Colin officially opened the celebrations with a short speech and made the first cut into the birthday cake (made by Lynne of the Ironing Parlour, Totley). Although we didn't set out to raise significant funds at this event with it being more of a time for celebration and reflection, we were fortunate to take home a sum of £850 for Transport 17.

Over this year, we will also be looking back through the archives and bringing you a potted history of the organisation, some of its memorable events and celebrations, as well as the challenges faced over the years. Here's a quick reminder of the beginnings.

In 1983 and 1984, Rev. Alan Jockel, then the vicar at Totley All Saints Church, noticed within the local community there were a considerable number of older people who were isolated because of their immobility, as well as a number of clubs in the area that were not functioning to capacity because of the lack of accessible transport for older, vulnerable people who were unable to travel by public transport or private car. Along with several other local individuals including the chairman of the new organisation Bert Jackson, Alan Jockel launched a fundraising drive to raise 50% of

the initial capital cost of a minibus, estimated to be in the region of £10,500. They reckoned the cost to be less than 30p a head for everyone living in the area. Help the Aged had promised to provide the other half if Transport 17 could raise the funds by June 1984. The postal district of Sheffield 17 – the sprawling, hilly, residential area that covers Dore, Totley and Bradway – was (and often still is) regarded by many to be one of the more affluent areas of the city and questions were raised regarding the necessity of such a transport resource. However, as is still the case forty years on, the feelings of isolation and deprivation experienced by older people who are no longer able to leave their homes independently cannot be overcome by financial security. We are social beings, and face to face social contact with others is vital for our mental health and general wellbeing.

With a new logo and a local artist providing some emotive images, individuals, churches, schools and businesses within S17 held events to raise money for the minibus fund and the total sum was raised with two weeks to spare before the deadline of 1 June. The Sheffield Star and Telegraph's Old Folk's Fund also donated £750. Transport 17's first minibus was accepted from Help the Aged at a 'handing-over' ceremony on 15 June 1984 in Green Oak Park. At the end of the first year of operating (June '84 – June '85), the minibus had travelled over 3,000 miles collecting over 70 people each week and taking them to lunch clubs and afternoon social meetings.

Many of the challenges faced by the fledgling organisation in those early years remain similar to those faced by us forty years on, for example, safe and easy to access locations for the minibuses, the availability of regular volunteers to drive the buses and assist the passengers, and of course raising funds.

We look forward to being in touch with, and meeting, many of our supporters old and new over this year, learning more about the history of the organisation and the part played by you and/or friends and members of your family. As always, we can be contacted on 0114 236 2962, by email at admin@transport17.co.uk, or via our Facebook page – [Transport17Ltd](https://www.facebook.com/Transport17Ltd).



The Lord Mayor and Lady Mayoress cutting the celebration cake

www.relieffrompain.co.uk

Hallamshire Osteopathy

DORE

We provide hands-on treatment for:-

- Back pain and sciatica
 - Neck and shoulder pain
 - Sports injuries
 - Arthritic pain
 - Knee and hip pain
 - Headaches
 - Whiplash injuries
 - Mobility problems
 - Pregnancy related back pain
 - Rehabilitation from injury
- ... and much more besides



Please call in for a no obligation chat & we'll see if we can help you

12 Causeway Head Road, Dore, Sheffield, S17 3DT

📞 0114 236 9315 or 07943 589293

JPR Farm Direct Ltd

Delivering Quality Garden Products

Screened Topsoil

JPR Gold-Soil Conditioner

Matured Farmyard Manure

Ornamental Barks & Play Chips

JPR Border Mix-for beds and borders

www.jpfarmdirect.co.uk

Tel: 01298 873022



Rightio Plumbing & Heating

0114 358 2001

Covering all of Dore and surrounding areas

COMPETITIVE RATES

- ✓ Fast Response
- ✓ All Work Guaranteed
- ✓ Flexible Appointment Times

OUR SERVICES

- ✓ Boiler Breakdowns
- ✓ Boiler Servicing
- ✓ Radiators & Pipes
- ✓ Tanks & Cylinders
- ✓ Toilets & Taps
- ✓ Leaks & Bursts
- ✓ Showers
- ✓ Clearing Blockages
- ✓ Pipework Replacement
- ✓ Gas Safe Certified

▶ 12 Month guarantee on labour! Excludes blockages

▶ OAP Discount Speak to us today!

▶ 1-2 Hour Emergency Response time!



650921

Start of a new era

After a frantic effort by the contractors, they met their 25 March deadline to open the entire scheme. It was a very close-run thing due to the record wet winter weather. The scheme includes new passing loops at Bamford and below Poynton Wood here at Dore, plus major resignalling from Sheffield to Bamford and down to Unstone, in addition to the work at the station. It's understood that in the final week there may have been 450 employed across all the sites working night and day.

There's still a lot of tidying up to do, but most of the contractors were taking a short break on the station site until another closure from 26 April until 1 May. Hopefully, half the car park will be restored adequately to reopen by mid-May with the entire area open by 1 June. Once that's achieved we'll be better able to see what's left to be done.

Reopening of a two-platform station

Initially we were expecting the station to reopen with a small ceremony to mark the arrival of the first stopping train at 6.15 on the 25th. Intended

guests had it in their diaries – but the lifts weren't ready, so it had to be postponed. Transpennine Express nearly caught us out by stopping their 5.14 - before dawn! FoDaTS committee member Andrew Dyson alighted having caught it at Sheffield so qualifies as the first member of the public to use the new platform. A life-long railway enthusiast, Andrew alighted from the last train to stop at the old platform before it was demolished in 1985!

MP Olivia Blake came down to see the 6.15 anyway and stayed to see how the station was being received. We were granted a Ministerial visit on 8 May when Rail Minister Huw Merriman called in with a selection of top railway people associated with managing the project. He was full of positivity, talking of three fast trains an hour to Manchester and electrification to speed up services. He was unable to counter suggestions that we might need to wait ten years for an extra fast service and 25+ for electrification. Currently we haven't a completion date for electrification of the Midland Mainline into Sheffield – 2035?

Huw's not a details man. More stopping trains at Dore? Not down to him. Loss of our shelter without replacement – move on! The cost and disruptive reality of electrification was evaded – it will be decided on a business case basis, which means deferred indefinitely.

However, we have two long, modern platforms that can accommodate six-carriage trains. Users are getting used to them and trainspotters, young and old, are loving it.

First impressions of bridge, lifts and platforms

Online feedback on the footbridge had a Marmite flavour, some love it, others loathe it! On-station responses have been more favourable but there's universal disbelief that the 1985 brick shelter has been demolished without replacement – see later. New Platform 1 is draughty and cold. No toilets!

FoDaTS members have followed this project for a long time. The late Glynn Waite, a founding committee member, saw plans for redoubling at Dore on the wall of Railtrack's Manchester offices in the mid-late 1990s. That suggests it has taken 25-30 years to complete. Glynn's friends have suggested we call it the Long Waite Bridge!

FoDaTS wanted the bridge to be more like the Midland Railway's

lattice bridge removed in 1985. We might have succeeded if we'd been in the Peak District National Park, but we aren't. The colours are Midland Railway style as seen on the heritage featured Settle & Carlisle line, and Keighley and Worth Valley Railway stations.

What now?

The FoDaTS committee is constantly trying to persuade those responsible for railways to provide better. It's a difficult task, not least due to the complexity of ownership, changing personnel, changing

priorities, compounded by long term after-effects of COVID on funding of all government related projects. The subsidies required to run the railway are astronomical. Northern calculate it costs 40p for every passenger mile travelled and that severely limits what can be done. So, we look for loose bricks in walls, unlocked doors, unexpected sources of short-term funding. We got a large cycle shelter during COVID as part of an initiative to get people out of cars – it's being used less than the old smaller one, a reflection of working from home.

The priorities now are a new seated shelter, toilets and more stopping services towards Sheffield. Restoring green areas too, as soon as appropriate plants can grow.

Who do we engage/liase with?

Just a few of them:

- Northern Railway – managers of the station itself and stopping services - they arranged the canopy in 2019.
- TransPennine Express and East Midlands Railway – provide fast services - TPE contributed to the canopy.
- South Yorkshire Mayoral Combined Authority, SYMCA – also contributed to the canopy, own most of the car park and are looking at increased car parking subject to dreaded business case review. They have some input into services.
- High Peak and Hope Valley Community Rail Partnership Co-ordinate community projects along the line and also contributed towards the canopy.
- Transport for the North – oversight of services subject to Department for Transport for funding and ultimate approval. Hard nuts to crack.
- Community Rail Network, Railfuture, Hope Valley Railway Users Group, Friends groups of other stations. There are more.

Next time, how it's going from here

Did we get a celebratory Spring Bank Holiday weekend with an open car park? Ideas for journeys – a stopping steam special in 2025? That's enough for now.

If you're a Facebook user, you can find and join us by searching for FoDaTS. It's a very active group with over 900 members and is updated frequently with topical information and comments.

Alternatively look for our website at www.fodats.net

If you're not on Facebook and would like more information please send an email to our Secretary (njbarnes@outlook.com) or to myself, chrismorgan4@btinternet.com.

Chris Morgan
Chairman



Marriott Plumbing & Heating Ltd

Gas Safe Registered 204606

Fully qualified maintenance
and installation
specialist with 25 years
of experience.

- *Boiler repairs and installation.
- *Pilot light failures.
- *Central heating breakdowns.
- *Emergency call outs.
- *Boiler servicing and powerflushing.
- *Landlord certificates.
- *Bathroom suits and wet rooms

No job is too small



MWB

M. WOOLHOUSE BUILDERS LTD
THE COMPLETE BUILDING SERVICE

Established since 1985

- From Design to Completion
- Bespoke House Builders
- Bespoke Extension Specialist
- Stonework Specialist

T : 0114 235 3314
M: 07973 908 187



www.mwoolhousebuilders.com
info@mwoolhousebuilders.com

A.W. OTTER & SON

Tree & Garden Services

When you're looking for a reliable company
with over 38yrs of experience look no further than

A.W. Otter & Son

For all your tree & garden work

With a friendly, professional service we offer.

- Tree felling
- Tree pruning
- Hedges, trimmed/reduced/removed
- Stump grinding
- All aspects of garden landscaping



Give us a call for
a no obligation quote

Richard Otter

07789740729/01142280404

Roast beef & Yorkshires



A couple of things have been pointed out recently by readers of Dore to Door. The first, that the vast majority of my reviews have been for dinner, and, considering the probable demographic of this magazine, a lunch review would be appreciated. The second is that over the almost eight years I have been writing this article, I have never reviewed The Crown. So, lunch at The Crown was the logical conclusion!

Located at the corner of Penny Lane and Hillfoot Road in Topley, The Crown has the stereotypical look of an old country pub with low ceilings, dark wood furniture, exposed stone and an open fire. The effect is warm and cosy, but the outside area with the ubiquitous picnic bench tables, and the large marquee give the place the addition of an al-fresco option. The pub was quiet when we went on a Thursday at around 1pm and we had a choice of tables.

The ambience of the pub made it almost impossible to order anything other than real ale. The Daily Bread (£4.95) from Abbeydale Brewery was an excellent choice – smooth and hoppy and at 3.8% ABV, not too heavy for lunch time.

The main menu has a wide range of modern pub standards priced between £4.50 and £7 for a starter and between £13.50 and £28 (fillet steak) for a main. There is a Mon-Fri. special of two mains for £25 which looks like excellent value for money, and also a lunch menu with reduced choices and reduced prices, and with a choice of lighter options. Starters and desserts for £3.95 each and £8.50 for a main. We went for the lunch menu and chose the Chicken Goujons, served with mixed leaf and sweet chilli sauce and the Creamy Garlic Mushrooms served with garlic ciabatta. The two decent sized chicken goujons were covered in a crispy batter with moist chicken breast and just the right amount of salad and dipping sauce. The mushrooms came in a large bowl with a very creamy garlic sauce. The dish was well seasoned and the ciabatta nice and crunchy, ready to soak up the sauce rather than starting out soggy like so many others I have experienced.

There is a significant choice of fifteen main courses, and unusually I was able to choose quite quickly. I narrowed it down to the Bangers & Mash, the Fish & Chips and the Giant Yorkshire Pudding with Meat of the Day. When our discreet waiter told me that the meat of the day was beef I went for the giant Yorkshire. The Yorkshire itself was great – crunchy where it needed to be and amply filled with creamy mash, peas, carrots and two decent slices of roast beef. The potato was

smooth and buttery with just the right amount of seasoning, and the gravy was outstanding. The carrots and peas were maybe a little bit overcooked for me, but that is marginal and not really a criticism. The beef, however, was tender and really tasty and the overall effect was a mini-Sunday roast (without the roasties) sitting inside a Yorkshire pudding. Obviously, adding Hendo's was the finishing touch and for £8.50 the value for money was great.

My friend chose the steak pie with chips (there was the choice of chips or mash). Normally, there would be the addition of garden or mushy peas, but as someone who doesn't eat vegetables, he chose to omit both! The pie was a proper pie (not a stew with a lid!), and came standing upright on its own, demonstrating the quality and structural integrity of the shortcrust pastry. Although not advertised as such, I am sure the chips were probably twice or thrice cooked, and were some of the best I have ever tasted in a pub. The pie filling of chunky, tender steak pieces in a rich gravy was on a par with the rest of the meal i.e. excellent.

The lunch menu has a choice of six desserts and, having left enough room to sample one (just for the purposes of the article, obviously!), I went for the Strawberry Cheesecake with pouring cream. The crunchy biscuit base was complemented with a cheesy creaminess, topped with sliced fresh strawberries. I strongly suspect the desserts were bought in, and that is in no way a criticism because both the cheesecake and the Chocolate Orange Truffle were excellent. If they weren't then I can only highly compliment the chef and apologise!

Overall, The Crown is an excellent example of an old-school country pub which has been brought into the twenty-first century, with a wide range of good hearty food, some more modern twists. The menus demonstrate excellent value for money, the food itself was at the higher end of the pub food genre and I will definitely be returning.

Hendo Nagasaki

The Crown Inn, Hillfoot Road, Topley S17 3AX

Tel: 0114 236 0789

Open every day from noon. Closing 10pm Monday, 11pm Tuesday, Wednesday, Thursday and Sunday, 11.30pm Friday and Saturday.

Food served from noon every day; weekdays until 3pm and 4pm-9pm; Saturday noon-9pm; Sunday noon-6pm



Quality Windows & Doors
in UPVC, Aluminium & Timber



MODGLASS ESTABLISHED 1968

Tel: 0114 2353 851 Email: info@modglass.co.uk www.modglass.co.uk

Expert audiology on your Dore-step

Local, Independent and Individual
Hearing Care serving the Hope Valley.

- > Comprehensive Hearing Tests
- > Hearing Aids (with 2 weeks free trial)
- > Effective Tinnitus Treatment
- > Professional Wax Treatment



Est.
2008

hearing therapy 

High Trees Clinic, 37 Townhead Road, Dore, Sheffield, S17 3GD
0114 395 2039 || hearingtherapy.co.uk



A huge thank you to everyone who came out and supported our fundraising efforts at the recent toy sale at Dore Old School. We had an incredible turnout, with people coming from both the local community and further afield to meet, browse, chat and support the playground.

Over the preceding weeks, we'd been collecting donations of children's toys, books, games, clothes and baby equipment and the generosity of those donating was truly staggering. We had everything from brand new wetsuits to cot beds (there was a point I was worried we might not fit it all in!) Alongside that, our amazing volunteers made some delicious home-made cakes to serve on the day and we even had incredible face-painting which was hugely popular.

We had hoped that the event would raise awareness and some funds towards the new slide, but we were overwhelmed by the donations we received. We opted to go for a pay-what-you-feel approach, with voluntary donations as people exited the event, because we felt strongly that we wanted to encourage people to feel able to browse freely (I was mindful that this was a great exercise in reducing waste and recycling within the community as well as raising funds).

Overall, we raised over £2,000 which was a staggering result, ensuring we could make steps to immediately direct and schedule the installation of the new slide. I know everyone involved can't wait to see the slide in situ and celebrate a big step forward in the development of the playground. A huge thank you to the volunteers – on the day and those who donated – for making such a wonderful day possible, we are extremely grateful.

We're now starting to think about future fundraising events. We were so pleased that the toy sale brought people together and we noticed that the coffee and cake room was a huge success. We are thinking about running a regular coffee morning fundraiser. We'll also look to run another toy sale closer to Christmas (perfect for both clearing out the old and finding stocking fillers too) and over the summer we're planning to organise a charity relay-marathon in a loop around the village, with runners taking on stages of the run. We'll share more details of all these events soon and very much hope you'll come out and support us again. If you'd like more information about how to get involved with fundraising, email me on megreengrass@gmail.com.

Martha Greengrass

Update

We await confirmation of the timescale for the installation of the slide which is weather dependent and subject to the capacity of Sheffield City Council Parks and Countryside Service (a busy team).

Agility Trail and Swings

The swings are to be removed next year - it came as a surprise to us too. The wooden frame, installed in 1998 via community funds, is close to the end of its life.

For business donations towards the agility trail (a low-lying obstacle course) we offer promotional opportunities to celebrate your donation.

How to donate

Please continue to use donate.giveasyoulive.com/charity/dore-village-society to donate online (Google 'more in dore give as you live'). Please send cheques made payable to 'More in Dore, c/o Dore Village Society Office, The Old School, Savage Lane, Dore, Sheffield S17 3GW or simply get in touch if you think you can help. If you would like to speak to a member of the More in Dore team please email dorerec@gmail.com or Julia.w@live.com

Council Support

We have face to face and email support from Sheffield City Council through the Central Local Area Committee (LAC). In February of this year, More in Dore received £3120 from LAC in recognition of a 'community focussed' strategy to improve the playground. The success of the toy sale is evidence of the strength of the support.

Be a 'Friend of Dore'

Through the LAC network More in Dore benefits from 'Friends of' status. This means we receive support and inspiration from the work of other groups across Sheffield.

Please contact us if you can spare an hour or two to plant trees and shrubs in Autumn 2024 or Spring 2025. We are keen to hear from anyone including local gardening groups and enthusiasts. Please email dorerec@gmail.com

We dearly love donations but also encourage ideas, advice, skills and advertising – all valuable currencies of support. Please get in touch. We all matter, we can all make a difference. Thank you.

Julia Watkinson

For and on behalf of More in Dore

Dore Recreation Ground - Playground Appeal

More in Dore is a subcommittee of Dore Village Society - registered charity number 1017051

MARTYN FOSTER ELECTRICAL

We provide a wide range of high quality electrical services and pride ourselves in our reliable, diligent, clean & tidy approach

- 24hour Call outs
- Re-wire specialists
- Upgrades
- New consumer units
- Smoke detectors
- Security alarms
- Phone/Internet points
- Door entry systems
- Heating controls
- Fault finding
- Inspection & testing
- Maintenance

All work certified, insured & guaranteed

Please call us to discuss your requirements

0114 258 9201
info@martynfosterelectrical.co.uk

MFE **MIC** **DOMESTIC INSTALLER**

Regular garden maintenance
Hedge cutting
Tree surgery
Garden tidies

0114 258 9290
james@jabird.co.uk
www.jabird.co.uk

1-5 Buttermere Road
Sheffield S7 2AX

JA BIRD LANDSCAPES

Red Lion Garage

Your local, reliable garage for over 25 years



**Yesterday's Values...
Today's Technology**

TavernGarageGroup

Red Lion Garage
32 - 36 Broadfield Road, Sheffield, S8 0WJ



To book a service or MOT call us on
0114 2551619 or you can book online at
www.taverngaragegroup.co.uk

totaltreefall

**LANTRA
AWARDS!**
APPROVED

- ★ Domestic & commercial garden maintenance
- ★ One off work or regular maintenance
- ★ All aspects of hedge maintenance
- ★ All aspects of tree work
- ★ All green waste fully recycled
- ★ Fully insured
- ★ Based in the S17 area

**FREE NO
OBLIGATION
QUOTE**

e: whitham86@hotmail.co.uk

t: 07809 888 196

w: totaltreefall.co.uk



HAMNETT
WEALTH MANAGEMENT



**Pension
TRANSFER**
Gold Standard

Helping you achieve your financial goals

Providing unbiased, reliable and trusted personal, financial and investment advice since 1989.

Hamnett Wealth Management have been helping residents in Dore achieve their financial goals for over 30 years. We pride ourselves on being trusted advisors, and have built long-lasting relationships which ensure our clients benefit from professional financial advice.

We offer initial consultations at no cost or obligation.

If you need advice on pensions, getting more from your savings or inheritance tax planning, consider getting in touch to find out how to make your money work harder for you.

Get in touch for a confidential chat

📍 160 Baslow Road, Totley, Sheffield, S17 4DR

☎ 0114 235 3500

✉ advice@hamnettwealth.com

🌐 www.hamnettwealth.com



Hamnett Wealth Management are authorised and regulated by the Financial Conduct Authority

DORE FESTIVAL 2024

Saturday 29th June - Sunday 14th July

Sat 29th	Exhibition: Dore Past & Present in Art & Photographs	Dore Old School 10am to 4pm Refreshments available
Sat 29th	Dore Methodist Church: Coffee, Tea, Biscuits & Homemade cakes	All proceeds to More in Dore 10.30am -12.30 and 2.00pm – 4pm
Sun 30th	Exhibition: Dore Past & Present in Art & Photographs	Dore Old School 10am to 4pm Refreshments available
Tue 2nd	Dore Ladies Group: Cllr Colin Ross & Mrs Sue Ross; Their Year as Lord Mayor & Lady Mayoress	Dore Community Centre, Townhead Road, 7.45pm £4 inc refreshments
Wed 3rd	Strawberry Fayre Hosted by Doreways Plant & Book stalls	Dore Old School £4 entry inc refreshments, 2.00pm to 4pm All welcome.
Fri 5th	Cycling Hill Climb Race Hosted by 7Hills CC All ages welcome	Whitelow Lane, Dore Start 7pm (roads closed) Enter online: 7hills.cc/events
Sat 6th	267th Scout Group Family fun run For more information see: www.RunTimes.co.uk/dore-gala-fun-run/	Meet at Bonfire Field on the corner of Limb Lane and Parkers Lane. 11am start
Sat 6th	Classic Car & Bike Show Food & drinks available	Dore Club, Townhead Road 1pm onwards
Sat 6th	Dore G & S: Summer Concert Mix A Summer Cocktail	Dore Methodist Church 7.30pm £10 inc refreshments Tickets tel: 07565 805405
Mon 8th	Dore Heritage Trail Led by Dorne Coggins	Meet Dore Old School 10am To book tel: 0114 327 1054
Tue 9th	Health Walks 1 or 2.5 miles 1 ml (30/40 mins) 2.5 mls (1 hour)	Meet Dore Community Centre, Townhead Road 10.20am
Wed 10th	Lord Conyers Morris Men	Hare and Hounds 8.00pm
Thu 11th	Dore Male Voice Choir Open Evening No tickets Retiring Collection	Dore Community Centre 7.15pm
Sat 13th	Dore Scout and Guide Gala	Dore Recreation Ground
Sun 14th	Festival Songs of Praise Led by Christ Church	Dore Methodist Church 3.00pm All welcome

PLEASE CHECK POSTERS LOCALLY FOR MORE DETAILS

Horizon Electrical

*Faults, Rewires, Sockets, Lights,
Cooker Points, Electrical Showers,
Phone Points, Security Lights*

No job too small
Fully qualified with friendly advice

Ring Totley **236 4364** or
mobile **07772 483154**

Hinchcliffe Decorators

Where Quality Work Comes as Standard

- Professional, reliable service
- Interior, Exterior work
- Commercial work undertaken
- Fully Insured, locally based
- Family run business

Specialists in all types of decoration
Contact Ian on:-

0114 262 0584 or 07977 956979

www.hinchcliffedecorators.co.uk

Unstone GardenScapes

Let us
transform your
garden

From concept to
completion

Fully insured.
Over 25 years experience.
Portfolio available.

Decking Fencing Patios Turfing Planting
Or just a general tidy up

Call Jason for a free quote
Mobile 07791069360

Vets4Pets Millhouses

Ask us about...
our affordable
health plans
for your pet

Everything you need to keep
your pet healthy and happy

- 15 minute consultations • Friendly, pet loving team
- Modern medical and surgical facilities
- Free on-site parking



The surgery is locally
owned by Vets
Tim Wood BVMS MRCVS and
Alistair Boyd BVMS MRCVS

Vets4Pets Sheffield Millhouses
964 Abbeydale Road, Sheffield, S7 2QF

Call: 0114 236 4070
or visit: vets4pets.com/millhouses

Opening Times: Mon - Fri - 8:30am - 7pm, Sat - 9am - 5pm

Vets4Pets
Putting your pet first.



brightman clarke architects

We value close collaboration with our clients, providing a bespoke, high-quality RIBA architectural design service tailored to your needs.

Instead of diving in at the deep end, consider our 'Kickstart' pre-appointment design consultation package. It offers a genuine insight into our approach without an obligation to appoint us. For more details, scan the QR code.

RIBA 
Chartered Practice



Brightman Clarke Architects, 32 Causeway Head Road, Dore, Sheffield, S17 3DT
Tel: 0114 236 1366 | Email: info@bcarchitects.co.uk | www.bcarchitects.co.uk

It's Showtime!

It's that time of year again - time to start planning your entries for the 2024 Dore Show which will be held on Saturday 7th September. This year's class list is below. If you have any suggestions about other classes that we could include in future years please let us know. More information about the programme and how to enter your exhibits will be included in the next issue of Dore to Door.

As each year passes we see changes to the organising committee as people leave and new ones join. The most significant change this year has been the departure of the chairman, Andy Pack. Andy has been the chairman for over five years and has led the committee with enthusiasm and

dedication. Among other things, he is the inspiration behind the evolution of the programme from a folded sheet of plain paper to the glossy and professionally produced document that we have today. The Chairman's role involves more than chairing meetings and Andy has been tireless in working to ensure that everything is in place for the day, taking on many responsibilities, bringing new ideas to the event and leading the team of volunteers who make up the committee. There have been times when the future of the Show has been in doubt and it's thanks to Andy, the rest of the committee, and everyone else who helps in the run up to the event and on the day that it's still held and continues to play a valuable role in the life of the community.

Keith Shaw
Interim Chairman, Dore Show

Home Grown Vegetable and Fruit Section

1. 6 pods of runner beans
2. The longest runner bean
3. 3 onions - each 200g or less
4. 1 vegetable marrow
5. 4 potatoes - one variety
6. 4 beetroot
7. 1 cucumber
8. 5 tomatoes- one variety (not cherry tomatoes)
9. 8 cherry tomatoes
10. 3 leeks
11. 4 dessert apples
12. 4 cooking apples
13. A plate of soft fruit
14. A pumpkin or squash
15. 1 husk of sweetcorn
16. 3 sticks of rhubarb

Home Grown Flower Section (supply your own container)

17. A bunch of mixed herbs in a jam jar
18. A vase of 5 dahlias - arranged to effect
19. 5 cut home grown flowers - same variety
20. 5 single roses (no buds)
21. A foliage plant in a pot
22. A flowering plant in a pot
23. A vase of mixed flowers
24. A vase of sweet peas

Domestic Section (Home-made)

25. carrot cake - any recipe
26. A Victoria Sandwich - strawberry jam or lemon curd filling
27. A lemon drizzle cake
28. A chocolate cake
29. 6 slices flapjack - any recipe
30. 4 scones
31. Parkin
32. 4 chocolate brownies
33. 1 pizza - homemade base, any topping
34. A jar of chutney
35. A jar of lemon curd
36. A jar of fruit jam

Wine Section

37. A bottle of home made wine
38. A bottle of home brewed beer

Junior Section Age 4-10 years

39. Original Lego construction - solid base no bigger than A4 paper- include a title for the model
40. A Fruit and/or vegetable animal
41. An animal mask
42. A picture A4 size - any medium
43. A collection of items (natural and unnatural) to fill a cardboard cup (max 6cm high)
44. A decorated hard boiled egg
45. 4 homemade Chocolate Krispies
46. 4 home made decorated cupcakes

Textile and Handicraft Section

47. An item of fabric clothing
48. A handmade knitted item
49. Any greetings card
50. A Quilted item
51. A crocheted item
52. A tapestry or embroidered or cross stitched item using a kit or chart

Visual Arts Section

53. A water colour painting
54. An acrylic or oil painting
55. A painting in any other medium or mixed media
56. A monochrome drawing - any medium

Photography Section

57. A black and white photograph
58. A colour photograph- 'Flowers'
59. A colour photograph- 'Sunrise/sunset'
60. A colour photograph- 'Of local interest'

Professional Cleaning by

NEW PIN CLEAN LTD

Daily • Weekly • Fortnightly • Monthly

- Spring Clean • House Moves
- Established 1996 • One Offs
- Fully Insured • Free Quotations

Our well trained staff will clean your home thoroughly. We offer a customised service to suit your requirements

**Sheffield's premier
domestic cleaning company**

0114 236 2943

49 Wollaton Road, Bradway, Sheffield S17 4LF

Bird walks in Dore

Bird expert Jim Clarke will be leading three walks in and around Dore over the summer. Last year's outing was very well received with many positive comments. We saw and heard 36 species and hope to do even better this year. The first walk (sadly too early for this edition of Dore to Door) was on Saturday 20 April, followed by one on 25 May and finally an evening walk on June 22. We'll be heading out to Blacka Moor for this last walk. Timed to coincide with the full moon, we hope to encounter some different species but avoid others, so make sure to apply anti-midge protection for this last outing. If you are interested in joining any of these walks, please book a place by email dvsenvironment@gmail.com

Volunteering opportunities over the summer

Sheffield and Rotherham Wildlife Trust has regular opportunities for volunteers on workdays on Blacka Moor: Thursday 16 May; Thursday 20 June; Thursday 18 July and Thursday 15 August. Booking is essential for these workdays; for more information, please contact Sheffield and Rotherham Wildlife Trust at nature.reserves@wildsheffield.com or 0114 263 4335.

Local Wildlife Sites

Sheffield has 253 Local Wildlife Sites (LWS), areas which have been identified as important for their local nature and wildlife conservation value. The largest LWS in Sheffield is Ecclesall Woods but we are lucky to have several others in our neighbourhood: Oldhay Brook; Blacka Dyke; Redcar Brook; Bushey Wood; Dore Moor and the Limb Valley. Although lacking statutory protection, these areas are vital in providing connecting corridors for wildlife species and are protected by local planning policies. In Sheffield, the Local Wildlife Sites Partnership, which selects the sites, is led by the Ecology Unit in the Parks & Countryside Department of Sheffield City Council with input from other local partners such as Sheffield and Rotherham Wildlife Trust. Five years ago I walked with Fran Halsall of Sheffield Woodland Connections along the Bushey Wood path noting the veteran trees, oaks, field maples, elderly hawthorns and coppiced hazels which Fran thought suggested a wood once managed for coppicing with standard trees. At this time of year there are wood anemones, wild garlic and bluebells emerging but struggling somewhat against garden encroachment and sometimes overwhelmed by more vigorous non-native species escaped or dumped from the neighbouring properties. The path has a very modest entrance but it's well worth exploring.

DVS Annual General Meeting

Please make sure that you have the details of the DVS AGM, Wednesday, June 19, in your diary (see page 4) when we will be welcoming the writer, researcher and environmental campaigner, Professor Ian Rotherham to talk about *'Wilder Greenspaces and Community Gardens: Environmental Action from the Ground Up'*.

Here's what Ian has to say about his forthcoming talk.

"Increasingly there is a demand, perhaps as never before, for people and communities to take local action in support of biodiversity. We need to tackle the increasing challenges of climate change and other environmental stresses, and where better than at home or on your doorstep.

"Dore Village retains a critical role in local greenspace adjacent to the National Park. Indeed, this places the village at the very core of environmental challenges, and the key to a sustainable future must lie within local communities and grassroots action.

"One way to address these issues is to 'wild' your own back garden or else your local community greenspace. If you take action to support local nature and wildlife, this helps make Sheffield more resilient in the face of climate change and associated extreme weather with its floods, storms, and droughts.

"My talk will demonstrate how local communities can take positive action for nature and will introduce ways to garden for nature and wildlife and why this is important. However, we will

go further to look at wilding local greenspaces and consider the resources required to bring about change."

This is suitable for all with no prior knowledge of nature or gardening required.

Ian Rotherham

Ian is Emeritus Professor at the Advanced Wellbeing Research Centre, Sheffield Hallam University, and chair of the South Yorkshire Biodiversity Research Group. He works with community action groups across the city and beyond, as well as being an advisor to local authorities and conservation bodies such as the Wildlife Trusts. He writes and broadcasts for local and national media.

He hosts a popular blog: ianswalkonthewildside.wordpress.com/, Twitter: [@IanTheWildside](https://twitter.com/IanTheWildside), and a research website: www.ukeconet.org

Margaret Peart



**J S JACKSON
&
SONS**

of Dore

Plumbers & Central
Heating Engineers

Tel: (0114) 258 8928

Mobile: 0771 373 0770

The Inspired Homes Planning Application on the site of The Dore Moor Nursery – What have we learned?

It is now common knowledge that on 5 March this year, Sheffield's Planning & Highways Committee refused the December 2022 planning application from Inspired Homes to develop the Dore Moor Garden Centre site as a substantial retirement village. Those of us who led the opposition to this application on the Dore Village Society Committee and the Dore Neighbourhood Forum Steering Group are deeply grateful to those who formally objected to the application, not least of which were our MP, our three Local Councillors (especially Colin Ross who joined two of us to speak at the Planning Committee meeting), CPRE, our local Wildlife Trust, the Peak District National Park and nearly 300 local residents. The Council Planning Officer who produced the paper on this application for the Committee was particularly appreciative of the quality and extent of the objections registered by Dore residents.

The Planning Committee's reasons for refusal included:

- the unacceptability of locating the development within the Green Belt
- the development would cause substantial harm to the setting of the National Park
- it would have a detrimental impact on the spatial and visual character of this area of high landscape value
- the design would be an incongruous development and an overdevelopment of the site
- poor internal outlooks would result in unacceptable living conditions for some residents
- The Sheffield City Council Draft Local Plan shows that enough new houses can be built to meet future local needs without going into Green Belt other than at the old Norton Aerodrome site.

The applicant has six months from the decision date within which to decide whether to appeal against the refusal. We must commend the Planning Committee for endorsing such compelling grounds for refusal.

The provision of sufficient new homes will be a major challenge for any Government of whatever political persuasion and building on Green Belt is bound to come under scrutiny in the future. The Dore Neighbourhood Plan makes clear that development in the local Green Belt is inappropriate.

For the present Sheffield City Council has stood firm and has demonstrated in its draft new Local Plan recently submitted to Government for examination that it can build enough new houses to meet future local needs without going into Green Belt other than at the old Norton Aerodrome site.

The inevitable pressures on all parties to increase house

building and to find the land to accommodate it are real and dangerous and should teach us that it is not enough to regard Green Belt protection as adequate in itself. Hence the importance of the work initiated by Dore's own Neighbourhood Plan to explore further reasons why development is potentially inappropriate in our local Green Belt. We additionally established in DN Policy 2 that "Development must respect the setting of the Peak District National Park" and the Planning Committee recognised that in its refusal decision. We also set out in the Neighbourhood Plan and its Aspirations annex that a Green Infrastructure Strategy should be prepared for Dore and that is echoed in the Planning Committee Decision Notice which criticised the retirement village for having a detrimental impact on the visual character and high landscape value of the land which is also designated here as Green Belt.

This underlines the importance of the work which GIST (Dore's Green Infrastructure Strategy Team) has put into the preparation over the last year of the first full draft of such a strategy for Dore's Green Belt. We will shortly be able to make the text available for public comment within Dore. What it sets out to do is to describe what features of the landscapes and watercourses across our Green Belt are of practical and cultural value to us as residents and the wider Sheffield community and how they could be enhanced, including, for example, biodiversity, flood prevention, access and recreation and natural beauty. The more that we understand why we value this land and can articulate it, the less we need to solely rely on Green Belt designations and the changing attitudes of politicians.

Christopher Pennell



Chiropodist

**Jennifer Downing, S.R.N.
Qualified Chiropodist
M.S.S.Ch. M.B.Ch.A.**

**Surgery behind Dore Chemist
Townhead Road**

**Tel: 0114 236 2048
24 hour answering service**



OUTRAM FIELDS
CINNAMON LUXURY CARE



Planning

FOR FUTURE LIVING EVENT

TUESDAY MAY 21ST 6PM-7.30PM

We invite you to join us for an informative legal and financial event on planning for future living where we'll guide you how to effectively manage and pay private care home fees.

Speakers - Erica Dietsch and Jonathan Rowley (Hamnett Wealth Management) and Suzanne Porter (Wake Smith Solicitors). Our speakers will give independent advice on:

- ❖ The importance of having a will and Lasting Powers of Attorney and why you need both Finance and Health and Welfare
- ❖ Navigating the care maze – options available to pay for private care fees including: Equity release, care annuities, sale of property, investments
- ❖ Insights into the sensitive topic of deliberate deprivation of assets



CANAPÉS &
REFRESHMENTS
WILL BE SERVED

As places are limited, booking is essential so please call Claire on **01144 930 736** or email: outram.haa@cinnamoncc.com to reserve your place.



RESIDENTIAL CARE | DEMENTIA CARE | RESPITE CARE | POST OPERATIVE CARE

Luxury Care Home in Sheffield
Outram Fields Care Home, 25 Twentywell Lane, Bradway, Sheffield S17 4QF
www.cinnamoncc.com/outramfields

A new venture nearby for adults with learning disabilities

Work Ltd. is a small, independent charity, which provides a friendly, encouraging and rewarding environment for adults (16+) with learning disabilities. We do this through creative and fun hands-on projects and activities, which aim to develop vocational and life skills, self-esteem and confidence.

Opportunities are wide ranging and include working in our award-winning Hidden Gem Café or learning basic life skills in the student kitchen such as cooking, washing and cleaning.

We also have a craft centre and workshop where students enjoy making a variety of arts and crafts, textiles, woodwork, stained glass and Jesmonite. Most of the products made by the students are sold via our retail units, The Hidden Gem café and Kreate, our brand new second learning centre. Kreate has the dual purpose of operating a unique, high-end gift store on the ground floor giving some of our students the chance to gain retail experience. On the upper floor there is a bright and airy craft-based workshop and multimedia room for podcasts and photography.

Selling the crafts not only provides an income source for the charity, but also builds enormous confidence and self-worth for the students who love seeing the products they have made for sale and talking to the customers. When the students aren't engaged in vocational and life-skills activities we offer a programme of recreational activities such as nature walks, sports, music, dance and drama, which help to promote healthy living and wellbeing.



We currently have 87 students from across Sheffield and beyond, who have a variety of moderate to severe learning disabilities including Downs syndrome, autism and general learning disabilities. People with learning disabilities have a significantly reduced ability to understand new or complex information, learn new skills and cope independently. We take a tailored approach for each student and passionately believe the caring, supportive and rewarding community-based environment we provide encourages each and every one of them to reach their full potential; in many cases achievements that they would have never thought possible!

Registered Charity Number: 105087

Kreate @ Work Limited, Home and Giftware, 4 Hutcliffe Wood Road, Sheffield S8 0EX

Email: ruth@workltd.org.uk

The Cope Young Person Community Award

At the Dore Gala in July the Cope Young Person Community Award will be handed out for the second time. The accolade will recognise a youngster who has significantly contributed to the village community and has made an impact in the lives of others.

The award was created by the three children of Geoff and Maureen Cope, who wanted to thank and reward someone who, like their parents, gave their time and energy to life in Dore.

Many of you will have known Geoff and Maureen, who between them volunteered countless hours of their time across more than a quarter of a century, not only to Scouts and scouting activities in the village, but also helped to organise and run both the Festival and Dore Gala.

Last year the honour of being the inaugural recipient of the community prize went to Stan Sutton, who, as a 19-year-old, had been both a Scout and a young leader, and had just been accepted into the Police Force. On receiving the trophy on the Recreation Ground last July, Stan had said that he was "extremely honoured" and that it had "seemed odd preparing for a Gala without seeing Geoff around!"



As well as being given a cut glass prize, Stan was also awarded a fifty-pound Amazon voucher by Geoff and Maureen's children – James, Katherine, and William – and they have pledged to repeat that each year in a bid to say, 'thank you'.

James Cope, who is the eldest of the three siblings, said, "it was important to us that we keep Mum and Dad's name involved with the Gala, as it was such a huge part of both our parents' lives and our lives growing up. They loved the annual celebration of village life, as did we, but they were also passionate about contributing to a vibrant community that had young people at the heart of it. To keep Mum and Dad's memory going through this award, and to give a youngster a moment in the spotlight, is a privilege and an honour."

Last year, during a wet ceremony as the Gala was being officially opened, it was Stan's turn to be applauded for the contribution that he had made, let's hope for the sun to be shining this July as the award is given out for a second time.



A1 Plumbing & Bathrooms
Complete Installation Specialist

Info@A1plumbingandbathrooms.co.uk
www.A1plumbingandbathrooms.co.uk

Tel - 07738 688 807

- Plumbing Leaks, Bursts & Blockages
- Taps, showers, Radiators, Etc
- All Tiling And Plastering
- Reliable, Fully Insured & Guaranteed
- No Job Too Small, NVQ Qualified

25 Five Trees Ave, Dore, S17 3LW





Birch Grove Architecture specialises in residential designs and offer a free initial consultation at your home.

Tel: 07816464730 | Email: enquiries@birchgrovearchitecture.com
www.BirchGroveArchitecture.com

ACTIV
PHYSIO

Call us on **0114 235 2727**
to book now!

Evening & Saturday appointments available

Say Goodbye to aches & pains and make an appointment with our team of friendly Physiotherapists at our **Totley Clinic**

- Back & Neck Pain
- Headaches
- Joint & Muscle pain
- Post Operative Rehabilitation
- Sports Injuries & Massage
- Women's Health Issues
- Acupuncture
- Home Visits & much more...

Open Monday - Saturday
5* Google rating

E: admin@activphysiotherapy.co.uk
W: www.activphysiotherapy.co.uk
A: 88, Baslow Rd, Totley, Sheffield. S17 4DQ

Local Specialist Advisers in

- Wills
- Inheritance mitigation
- Trusts
- Lasting Power of Attorney

3Sixty Estate Planning Ltd prides itself on its ability to offer its clients the highest standard in professional estate planning, given by friendly, qualified advisors at an affordable price.

Best of all, initial consultations are free of charge and free from obligation, and we can offer appointments either in our prestigious offices in Hathersage, over the phone or via video call.

We appreciate writing a will can be a sensitive matter and we always work hard to treat our customers with care and compassion, no matter your personal circumstances.

To book an appointment visit www.3sixtyep.co.uk or call **01433 424 360**

 **3SIXTY** ESTATE PLANNING

Planning the Play

One of the most important tasks as declarer is to make a plan before playing the first card, taking into account what can be inferred from the bidding and opening lead about the opponents' holdings and distribution. Take the following example.

North
 ♠ 975
 ♥ Q1074
 ♦ KJ
 ♣ KQ65

South
 ♠ A103
 ♥ AK83
 ♦ Q8
 ♣ A973

Bidding

North	East	South	West
Pass	Pass	1H	Pass
3 H	Pass	4H	Pass

Opening lead ♠10

Plan the play before reading on.

Analysis

You can count eight tricks: one spade, three hearts, one diamond and three clubs. This means that you will have to make four heart tricks and four club tricks. If hearts and clubs break three two there's no problem but if either is four one you could go down. So how to play the hand?

The ♠10 looks like a singleton or doubleton. It's not from ♣J10 because West would have led the ♣J from that combination, therefore East has the ♣J. If clubs split three two that's not problem but if East has four clubs you will need to finesse the nine.

If East also has four hearts there's nothing you can do about it but if West has four hearts you can succeed by finessing the ten. So, you have to retain the finesse positions in both suits when playing the cards.

The play

If you automatically play low from dummy on the first trick and win in hand with the ♠A you will lose the club finesse position and lose a trick to ♣J, so win the first trick in dummy and start to draw trumps by leading low towards ♥A. Both follow so cash ♥K and, when East shows out, you have ♥Q10 sitting over ♥J9. Now finesse ♥10 and cash ♥Q, drawing the last trump. Then take the marked club finesse followed by ♠A. Now play diamond to knock out the ♦A, win the return and play your remaining winner. So, that's four heart tricks, four club tricks, one spade and one diamond, and contract made.

See page 47 for the full deal.

Keith Shaw

Where in Dore (p11)

Answer: Above the window to the right of the High Street door to the Devonshire Arms

Tuesdays 10.30am: Weekly free health walks every Tuesday from Christ Church Community Centre on Townhead Road, postcode S17 3GA. No need to book. Meet from 10.20am in the back room. Parking is available. The long walk takes one hour.

Although it is always sad to experience the demise of an old friend, when they get to 88, as Mike Tolson did, it becomes a celebration of a long and varied life. It was nice to see several ex-members at the funeral and the wake. Many fun and silly times were recalled with great affection. When my time comes, I hope there are very few tears but plenty of happy memories.

The Society has not yet chosen a replacement for the role of President, but I expect that the subject will crop up at the AGM. Mike's son, Adrian, handed over several volumes of photographs which gave Ann and me much pleasure. I know that the older members will get a lot of joy out of wading through them and being reminded of all sorts of things that have long been forgotten.



The first concert version of *Iolanthe* was performed at Crookes Working Men's Club in early April and was very successful. It was more than a concert version really because it included the full dialogue, and all the principals wore the appropriate costume. It was very well attended and for many attendees it was their first taste of light opera and, having spoken to them afterwards, they said how much they had enjoyed it. The thing about G&S operettas is that they are understandable because they are in English; the spoken libretto does much to explain the story, silly as most of them are. Don't confuse them with Grand Opera, like Verdi or Puccini. They are much more light-hearted and fun with very singable tunes. They generally poke fun at an area of the British Establishment; in the case of *Iolanthe* it is the House of Lords which is the butt of the jokes. There is always some silly element in the stories, maybe a love potion as in *The Sorcerer* or an anomaly caused by being born on 29th February in a leap year as in *The Pirates of Penzance*. In *Iolanthe* it is the elevation to the Peerage of Strephon who is half a fairy (don't ask). It all gets explained in the operetta. One striking thing about Gilbert's writing is how relevant it is even today, for example in Private Willis's song he states that "*MPs have to leave their brains outside and vote just as their leaders tell them to*". It's too late to catch one of ours this year but you might consider seeing one in future.

Later this year we have the annual Summer Concert in Dore Methodist Church on Saturday July 6th at 7:30pm, then on Friday 27th September at Wentworth Church and at Bolsover Assembly rooms on Saturday 12th October at 7:30pm. Tickets will be available by phone on 07565 805405 or via the web at doregass.weebly.com/tickets.html.

Finally, we've finally got to the end of Ann's scalded leg saga. She has been signed off from the hospital with little more to show for it than a mild scar, hooray.

Have a good early summer and hopefully we'll see you at one of the concerts.

Derek Habberjam

It's only **30p per word** to promote your service locally. Just call the advertising phone **07583 173489** or email advertising@doretodoor.co.uk.

DORE AND TOTLEY TILING -All aspects of floor and wall tiling. Free estimates and competitive rates. Phone Andy on 07983 622324

HAIRSTYLIST -Experienced, Professional and Local. City and Guilds Qualified in Hair Design and Cutting to a very high standard. All in the comfort of your own home. For appointments please telephone Suzanne - 07899 996660.

WANTED HI-FI, RECORDS, cassettes anything interesting or vintage. Call me to discuss. I live in S17 so I am local and happy to give you a price. Jeremy 07972 830244.

PILATES CLASSES run by experienced Physiotherapist/Pilates instructor at Dore and Totley URC on Thursdays 1.30-2.30pm, 5.15-6.15pm, 6.15-7.15pm. Please contact Emer on 07792422909 for further information.

CHIROPODY Home Visits Amanda Ross FSSCh.MBChA.DipPodMed Tel: 07904 919775

HORIZON ELECTRICAL All aspects of domestic electrical work. Competitive rates. Phone Totley 236 4364

LOVING HOMES WANTED We are a small Cat Rescue in Dore and we are in desperate need of loving homes for the beautiful cats and kittens currently in our care. If you are interested in re-homing a cat or a kitten now or in the near future, please call 07772 650162 and we will be delighted to show you around.

PILATES CLASSES, Dore Old School. Tuesdays 0930-1030. Fridays 0915-1015, 1030-1130, 1140-1240. Stand well, move well and feel good. Improve posture, balance, flexibility and core strength. sallykilnerpilates@gmail.com 07917762502

TRAIN WITH SUZY offers bespoke personal training focussed on fitness, weight loss and body toning. Based in Dore with own home gym, I offer private sessions individually tailored to your goals. Please check out my website www.trainwithsuzy.com Call me for a free consultation 07825-167411

ALAN GODDARD PLUMBING & Heating Dore 103 Limb Lane Dore S17 3ES 0114 2364575 / 07973 181666

FINEST GRIMSBY FISH delivered to your door. Please call Ben on 07709 553888

MP LOCKSMITH Burlington Road, Dore. All locks repaired/replaced. Upgrade your locks to Anti snap locks for insurance purposes. Mark Pidgeon 07752 069013 / 0114 3271824

DRIVEWAY AND PATIO Cleaning and Restoration. Professional and reliable service, fully insured, 5* reviews. For all your driveway and paving services including pressure washing, re-setting of sunken paving, replacement of broken flags, removal of damaged pointing and re-jointing of flags, re-sanding etc. please contact Ash's Paving Restorations. Contact Ash on 07860 243127 and find me on Facebook.

IYENGAR YOGA Monday morning class (9.30 – 11.00am) at Dore Old School with an experienced Iyengar Yoga teacher. Contact Heather on 07535 247474 or heatherab@sky.com for further details. Students new to yoga welcome.

COTTAGE ACCOMMODATION in Dore short term, especially suitable for visiting friends and relatives; Phone 236 6014

KEEP YOUR STAFF FIT AND HAPPY - BOOK YOUR FREE CONSULTATION - RING 07837 544 845. PT Adam Taylor with 10+ yrs experience & local of Dore. Staff wellbeing is paramount if you want to get the maximum out of each individual. I provide a small group lunchtime fitness session at your workspace to help increase energy levels & productivity for the afternoon. Get in touch to find out how I can help. adam@taylored-personal-training.co.uk

ATKIN ELECTRICAL Rewires, Sockets, Lights. No job too small. Steve Atkin Your local electrician 07939 285615



Television and Video recorder repairs

City and Guilds London Inst Fully qualified. Over 25 years professional experience. For prompt reliable friendly service ring 0114 287 6806 and ask for Richard. Ex Bunker and Pratley



Takdir

Indian Take-Away

Opening Hours:
Evenings 5pm -10.30pm
7 days a week
Including Bank Holidays

Free Home Delivery
within 3 miles radius
minimum order £10

We cater for parties and Deliver right to your doorstep

Tel: 262 1818

339 Ecclesall Road South
Parkhead, Sheffield S11 9PW
www.takdirtakeaway.co.uk

Est 1971

R.S. HEATING

& BUILDING CO.

ESTABLISHED 1971

Heating division

Experienced installers of all types of domestic boilers.
Authorised installers of Vaillant, Worcester Bosch and Glow worm boilers.
Systems fully granted.
Full after sales service dept.

Plumbing division

Bathrooms, showers, wet rooms, individually designed washing rooms for the disadvantage a speciality.
A complete service including design.

Building

Kitchens, complete House renovations including general building, joinery, plastering, tiling, electrical, decorating etc.
88 Sunnyvale Road, Sheffield S17 4FB

Tel: 0114 2364421

e: enquiries@rshb.co.uk
w: www.rshb.co.uk








MAY

- Wed 15 Dore Garden Club - Future-Proof your Garden. Methodist Church Hall, 7:15pm. Hosted by Rachel Barrowcliffe, Garden Advisor. Rachel has been a professional gardener for over 30 years, a gardener and adviser at Hodssock Priory and The Tropical Butterfly House Conservation Park and Zoo, Sheffield. The theme of Future Proof your Garden is about what we might do to adapt to enable our gardens to thrive in the light of our changing climate and as we grow older. Membership is open to all and costs only £18 for 9 meetings. A warm welcome is also extended to visitors who pay £4 per event on the door.
- Sat 18 The South Pennine Group of the Hardy Plant Society is holding a Spring plant sale at Sheffield Botanical Gardens (Thompson Road entrance) on Saturday 18th May from 11.00 to 15.00 and on Sunday 19th May from 11.00-14.00.
- Tue 22 Totley History Group - Yorkshire Folklore. Talk by Catherine Warr. Totley Library, 7.30pm. Non members welcome
- Thu 30 Wyvern Walk: Starting from the large layby just above Cutthroat Bridge, we walk down the road, cross at Cutthroat Bridge and follow the path past the rear of the Ladybower Inn, then turning right along a path taking us below Lodge Cote before swinging round and ascending to Derwent Edge and returning across Derwent moors with good views to the east and south. Approx 6 miles, mostly good underfoot but with one short uneven stretch. Leader - Keith Shaw 07778 422 910. Meet at the Old School, Savage Lane, Dore, ready for departure at 9:30. Car sharing will be organised on the day if we are not starting the walk in Dore. Please note that everyone joins walks at their own risk. Please be sure to wear appropriate footwear and clothing, and bring any refreshments and drinks that you will want to consume.

JUNE

- Wed 5 - Sat 8 Better Off Dead, a "comedy of confusion" by Alan Ayckbourn. Performances will be at Hope Methodist Hall, Edale Road on 7.30 pm nightly. Tickets (£10) are available from www.ticketsource.co.uk/hadit or through Carolyn on 01433 620665, which is also the contact number for further details. See also article, page 9.
- Sun 16 Mike Jackson's Open Garden Mike Jackson will be opening his garden at 9 Newfield Crescent, Dore on Sunday 16th June from 2pm until 6pm. Admission will be free and everyone will be welcome. See article page 2.
- Mon 17 Wyvern Walk: Start at Calver where there is roadside parking. Walk over Calver Peak and Longstone moor including High Rake, Black Harry Gate and Coombs Dale. 5-6 Miles. Hilly in places, can be muddy, but generally easy walking. Leader - Peter Bower 07748 086 793
- Wed 19 Dore Garden Club - Flowers of the Algarve, hosted by Ken Balkow. Dore Methodist Church, 7.15pm. Membership is open to all and costs only £18 for 9 meetings. A warm welcome is also extended to visitors who pay £4 per event on the door.
- Wed 19 Dore Village Society Annual General Meeting, Community Centre, Townhead Road, 7.30pm. See panel on page 4.
- Sat 29 Dore Ladies' Tuesday Group: our main fundraiser this year will be on Saturday June 29th. As part of Dore Festival there will be an exhibition about the History of Dore in the Old School opposite the Methodist Church, and on that day we shall be serving coffee, tea, juice, biscuits and delicious homemade cakes in the Church Hall from 10.30-12.30pm & 2-4pm. Do come and join us and help raise funds for this extremely good cause.

JULY

- Sat 6 Dore Gilbert & Sullivan Society annual Summer Concert in Dore Methodist Church on Saturday July 6th at 7:30pm. Tickets by phone on 07565 805405 or via the web at doregass.weebly.com/tickets.html.
- Wed 17 Dore Garden Club - Experience of a Chatsworth Trainee Gardener, hosted by Joe & Hannah. Dore Methodist Church, 7.15pm. Membership is open to all and costs only £18 for 9 meetings. A warm welcome is also extended to visitors who pay £4 per event on the door.
- Thu 18 Wyvern Walk: Starting in Baslow walk into Chatsworth. Through the del round the lakes and back to Baslow. 6-8 miles depending on the weather. Bring sandwiches or a snack. Leader - Sue Proctor & Rosemary Newton 07751 723 335

- Thu 18 Dore & Totley Lunch Club - 50th Anniversary Celebration 2:30pm at Dore and Totley United Reformed Church, Totley Brook Road. A short, informal service of thanksgiving to celebrate 50 years of our lunch club will be held at the United Reformed Church on Thursday 18th July at 2.30 pm. This will be followed by tea, coffee and cakes. We are giving this advance notice hoping that all volunteers, ex volunteers and anyone with a connection to this club can join us. Please pass the word around. See also article, page 2.
- Mon 24 Totley History Group - A Walk and Talk in Whirlow Park Gardens 11:00am. Led by: Susan Turner. Numbers are restricted, please contact www.totleyhistorygroup.org uk to reserve a place.

AUGUST

- Sat 3 Wyvern Walk: Park at Dennis Knoll car park (pay and display) and walk alongside Stanage Edge towards Moscar before descending to Jarvis Clough and then following Bamford Edge back to Dennis Knoll. 10.5km/6.5m An easy walk with lots of fine views. Leader - Keith Shaw 07778 422 910. Meet Old School car park, 9.30am.

Dore Bridge

The full deal

North
 ♠ 975
 ♥ Q1074
 ♦ KJ
 ♣ KQ65

West
 ♠ KJ86
 ♥ J962
 ♦ 10632
 ♣ 10

East
 ♠ Q42
 ♥ 5
 ♦ A9754
 ♣ J842

South
 ♠ A103
 ♥ AK83
 ♦ Q8
 ♣ A973

Opening lead ♠10

Summary of the play

Win the first trick in dummy and start to draw trumps by leading low towards ♥A. Both follow so cash ♥K and, when East shows out, you have ♥Q10 sitting over ♥J9. Now finesse ♥10 and cash ♥Q, drawing the last trump. Then cash ♣Q and take the marked club finesse followed by ♠A. Now play diamond to knock out the ♦A, win the return and play your remaining winner.



We clean your oven.....
so you don't have to

Call today to have your oven, hob, extractor or Aga professionally cleaned

Pippa Weir contact details
 Tel 0114 258 3466,
 Mob tel. 07716 992648
www.ovenwizards.com



This article first appeared in *Dore to Door* issue number 34 of Summer 1994.

The Earls and Dukes of Devonshire



This year sees the 300th anniversary of the granting of a Dukedom on 12th May 1694 to William Cavendish, fourth Earl of Devonshire, in return for helping to bring William and Mary to the English throne.

Given the links with Dore, large parts of which once belonged to the Devonshire estates, we will look over the next four issues at the lives of successive Earls and Dukes of Devonshire from the 16th Century to the present day.

William, first Earl of Devonshire, 1552-1625

Why the first Earl adopted the county of Devon for his title could never be accounted for. William Cavendish was not in fact born to inherit the vast wealth which would bring him the title of Earl although it was fortunate for future generations that events unfolded as they did.

William was the second son of Sir William Cavendish and Bess of Hardwick. Bess's first husband, Robert Barlow, already 'sick of the Chronical Distemper' at the time of their teenage marriage, left her a childless widow whilst still very young and Bess was aged only about twenty when she married the twice-widowed Sir William Cavendish in 1574.

Sir William had earlier been well rewarded by Henry VIII for his role in securing monastic properties at the dissolution, not only being given a knighthood and the position of Treasurer of the king's chamber, but generous grants of former monastic land. He was to continue to receive royal favour and more landed property - from Edward VI, retaining his office under both Edward and then Mary Tudor.

This wealth was all to be converted into Derbyshire property during his marriage to Bess, beginning with the purchase of the manor house of Chatsworth in 1549 for £600. The property was put into their joint names and Bess's ambitions to replace it with a magnificent new Chatsworth House ultimately left her husband in the serious position of having to explain to Queen Mary why £5,000 was missing from the accounts of the royal chamber.

In the event Bess herself had the problem when Sir William died in 1557 with the debt still unsettled. It was only her personal friendship with Elizabeth I which eventually enabled her to settle the matter, at a greatly reduced figure, without having to sell her beloved Chatsworth.

Meanwhile, this most eligible widow had quickly contracted another favourable, albeit affectionate, match. Her third husband was the wealthy Sir William St Loe. Bess brought six young Cavendish children to the marriage, all treated admirably by their otherwise childless step-father who also paid for the two oldest boys, Henry and William, to attend Eton. St Loe died in 1564 but three years later his step-children's future was assured beyond question when their mother took for her fourth husband George Talbot, sixth Earl of Shrewsbury.

Eventually this marriage ended in acrimony, yet when the Countess of Shrewsbury was widowed for the last time in 1590 she managed to keep the Shrewsbury wealth, making her the richest woman in England after the Queen. Bess was determined to settle the bulk of these assets on her son, William Cavendish. William has often been written of as her favourite son but the fact is that his older brother, Henry, was such an unworthy heir that he and Bess had been estranged long before she died in 1608.

Fortunately for the succession Henry fathered only illegitimate children; his activities as 'the common bull of Derbyshire and

Staffordshire' were common knowledge. It was due to his large debts that Henry had to sell Chatsworth, with its valuable income from rents, to William. At least, too, Henry died in good time for his younger brother to take the family's vast fortune into his capable care.

William Cavendish was by now in his mid-sixties and married to his second wife, Elizabeth, by whom he had a son. His first wife, Anne, had borne him three sons and three daughters but of the former only his namesake, William, survived him.

The first family had lived at Hardwick during the later part of Bess's life but whilst William was by nature a modest and rather frugal man, deeply committed to his interests in Derbyshire, there were benefits to be gained from his social standing, his wealth, and not least his keen business acumen.

Shortly before he reached the age of thirty, William received a knighthood from Elizabeth I. Under James I, on the occasion of the christening of the Princess Sophia in May 1605, he was created Baron Cavendish of Hardwicke. In the intervening years he had acted as MP for Liverpool and for Newport, served as High Sheriff of Derbyshire, and was later appointed Knight of the Bath.

William, Lord Cavendish, was to receive something even more important to bequeath to his heirs - an earldom. On 2 August 1618 he was created Earl of Devonshire during a stay at the Bishop of Salisbury's palace with the king and his court, though the honour reputedly cost him £10,000. The following year he was named Lord-Lieutenant of Derbyshire, official representative of the Crown with responsibility for the judiciary and militia in his home county.

Through all of these roles his first duties, as ever, were to his birthright and at his death, on 3 March 1625, a very healthy inheritance awaited his son and heir, another William Cavendish.

Julie Bunting

WRIGLEYS
— SOLICITORS —

SPECIALIST WILLS & TRUSTS SERVICE

• Asset Protection • Inheritance Tax Planning

Wrigleys solicitors are local to you and experts in this area of law. We are experienced and sensitive to your needs.

For a FREE, no obligation discussion, please contact

Peter Clarkson: peter.clarkson@wrigleys.co.uk

Daniel Cooil: daniel.cooil@wrigleys.co.uk

Sheffield Office t: 0114 2675588

wrigleys.co.uk

Lexcel
Practice Development Specialist
Law Society Accredited

We support Dementia Friends
dementiafriends.org.uk

