

DORE DOOR

DORE VILLAGE SOCIETY

NO. 156 WINTER 2024

ISSN 0965-8912



Paper Moon under new ownership



We are very excited to have taken over the beautiful card and gift shop Paper Moon, which is a well-established business in the village with many loyal customers.

So a bit about me, my name is Vicky McKie, and my family and I have lived in Dore for almost 20 years. For many of those years I have been one of those loyal Paper Moon customers always getting fixed up for cards and gifts and treating myself to the occasional gorgeous handbag or that pair of earrings I just had to have!

When I heard the shop was up for sale, it presented an opportunity

to embrace a new challenge and with it a big lifestyle change. It's many years since I last worked in retail, I had a Saturday job in my local fruit and veg shop whilst doing my A levels. I then went off to Uni and embarked on my nursing career working with adults, babies on the neonatal unit and ended up loving my work as a health visitor in the community, supporting new parents with their babies and toddlers, recognising the many joys and challenges that parenting brings.

I am a mum to three gorgeous children who have all gone through Dore Primary school and King Egbert, two of whom are now at Uni, leaving me with more time on my hands but also that empty nest feeling - time for a new project, Paper Moon!

Taking on the shop has felt like a chance to do something different but still be working within the community, being a friendly face and always a listening ear. I'm keen to help link mums, babies and toddlers in the village, and promote baby groups and signpost parents to helpful resources. Yvette, who many of you may know, works in the shop two days a week which still frees me up to do my health visiting job and she is a real asset.

I am a creative person who appreciates attention to detail and pretty things. When I walk into Paper Moon I am met with a feeling of calm and it really is my new happy place!

So why is Paper Moon such a great shop? It's your local one-stop destination for a variety of cards, gift wrap, jewellery, candles and thoughtful gifts and stylish finds for all ages, including a range of women's clothing. It is a perfect shop for browsing and having a mooch.

We stock a wonderful range of costume jewellery, with well-known brands including, Pilgrim, Estella Bartlett, Joma Jewellery, Peace of Mind (POM) and Rosie Fox.

Clothing brands, include Powder, Goose Island, Soya Concept and Peace of Mind. We have a small area in the back room to try on clothes prior to buying. We are well known for our great collection of genuine leather handbags, which come in in many different sizes and styles.

Caroline Gardner for colourful stationery, cards and accessories and delicious Cocoa Pzazz chocolates. East of India for delicate and heartfelt homewear.

Jelly Cat has stolen hearts globally, ours included! Their soft toys are known for their adorable look and luxurious quality and are the perfect gift for kids and grownups alike and I can't wait to display the Christmas collection.



We have also introduced a range of the London ROKA bags, Marmalade Emily Smith range, and Choc on Choc novelty chocolates and there are loads of Christmas stocking ideas instore.

We will be holding a special lead up to Christmas promotions event on Wednesday 20th November and will be open until late.

Please follow us on our FB page And come and see us soon.

Vicky

Christ Church Kids

At Christ Church Dore we have really enjoyed getting to know the children of our community through our termly events featuring creative crafts, delicious food and fun activities. We have taken our teddies on adventures from the heights of the church tower using a zip line, to a delicious teddy bears picnic in the community centre whilst the building project at the church building is underway.

We have a fabulous group of volunteers who have used their time and skills to provide imaginative events that appeal to children of all ages, including an Easter themed 'Crafternoon Tea' and a construction themed afternoon full of Lego and building activities that inspired some incredible creations and excellent teamwork!

Looking forward to Christmas – we would love to welcome you to our Christmas event 'Follow the Star' on the 13th December where there will be stories, activities, crafts and festive snacks for the children (as well as some mince pies and hot drinks for the grown-ups too!) Please email events@dorechurch.org.uk for further information.

Claire Patrick



Abbeydale Golf Professional plays for Great Britain

Abbeydale Golf Club's Head Teaching, Professional Gareth Davies, is one of the ten-man team selected to represent Great Britain and Ireland in the PGA Cup matches against the USA at Sunriver Resort in Oregon between the 13th and 15th September.

The 47-year-old Sheffield golfer was named on the team sheet by the Professional Golfers' Association a few weeks ago and both he and the members of Abbeydale GC are incredibly proud of this outstanding achievement.

The PGA Cup was first played in 1973 at Pinehurst, North Carolina and is a biennial contest between the PGA of Great Britain & Ireland and America. This event is seen as the pinnacle for any PGA Professional with both teams going head-to-head in a Ryder Cup format to win the Llandudno International Trophy, originally donated to the PGA by Peter Alliss.

Over the years, the Cup has been played for at a number of world-renowned golf courses on both sides of the Atlantic such as Muirfield, Turnberry and the K Club in Ireland. The last meeting between the two teams was in 2022 at Foxhills Golf Club and Resort, Surrey where the PGA of America won a closely fought contest 15.5 points to 10.5.

Being selected to play in such a prestigious sporting event is the culmination of years of hard work and dedication to the game of golf. Gareth is a former Sheffield Amateur Champion and Yorkshire team player and, after turning professional in 2001, he had the great thrill of winning twice on the European Challenge Tour. He later competed against some of the best golfers in the world on the main European Tour, now known as the DP World Tour.

In 2015, after years travelling the world playing golf, Gareth decided to change direction with his career, settled down to married life in Sheffield and put all his efforts into becoming the respected

PGA Advanced Professional that he is today. In addition, in 2020 he was elected as Captain of the Yorkshire PGA.

He is enthusiastic about passing on his experiences as a topflight player to help others improve their golf and enjoy the game more. He is now Yorkshire County Coach to both the Boy's and Men's teams and was part of the support team that helped lead the Yorkshire Men to become national champions in 2023.

However, Gareth's in-demand coaching duties have not dampened his enthusiasm for continuing to play golf at a high level as was illustrated in 2019 when he won the famous Leeds Cup held at Leeds Golf Club. This is the oldest trophy in golf and bears the names of legendary golfers from the past who have won the Open Championship on nine occasions and the US Open Championship twice.

Golfing life could not be better for Gareth Davies at the moment and there will be very many people cheering him on when he and his fellow team members do battle with the Americans on their home soil in September.



Homelessness in Sheffield



As Christmas and the colder weather approaches, access to warm shelter during the day becomes increasingly important for Sheffield's homeless. The Homeless and Rootless at Christmas (HARC) charity has been providing a safe and warm day shelter for homeless and vulnerable people over the Christmas period since 1989. This year they will open at Victoria Hall in the city centre on Christmas Day and Boxing Day and will provide two hot meals and a takeaway tea each day.

Like a lot of organisations, HARC is staffed by volunteers, is dependent on donations and they are in constant need of both. If you can help or donate, they can be contacted by email at harc.sheffield@virgin.net

Their website is www.harcsheffield.org.uk/donate

All Saints Church, Totley Celebrates 100 Years with a recreation of the first service

On Sunday 17th November All Saints Church, Totley celebrated its 100th anniversary with a special centenary service, recreating the first service held at the church in 1924.

The service was led by the Bishop of Sheffield and featured music from the Steel City Choristers, creating a memorable and atmospheric event. The congregation included local dignitaries and former vicars.

After the service, a champagne reception was held in the Church Hall with guests viewing a special exhibition curated by the Totley History Group, showcasing the church's rich heritage and ongoing connection with the local community.

Founded in 1924, All Saints Church was built to serve the growing population of Totley, becoming an independent parish that same year. Over the past century, the church has played a central role in the spiritual and communal life of the village. Today, with an average Sunday attendance of 130, the church continues to thrive and engage with the local community, providing vibrant youth programs, community outreach, and special events like the immersive Christmas Experience.

Tuesdays 10.30am: Weekly free health walks every Tuesday from Christ Church Community Centre on Townhead Road, postcode S17 3GA. No need to book. Meet from 10.20am in the back room. Parking is available. The long walk takes one hour.

Cover: A rare picture of the Northern Lights over Dore, something which hardly ever happens. Published by kind permission of Allen Bentley.

Peak District accessible routes ‘Changing Place’ opens at heart of the Monsal Trail

A new Changing Place Toilet (CPT) and changing facility opened on 19 September at Millers Dale car park, next to the Monsal Trail in the heart of the Peak District National Park.

Located at the former Millers Dale railway station between Buxton and Bakewell, the new state-of-the-art facility will help to unlock access to the countryside for those with additional, or particularly complex care needs.

Around 2,500 CPTs can be found across the UK, with those already available in the Peak District typically linked with attractions or other facilities such as at Chatsworth House or the National Trust’s Ilam Park, near Ashbourne. Several others are based in neighbouring towns and cities.

The Millers Dale CPT is the first to be located alongside the National Park’s 35-mile network of multi-user, traffic-free accessible routes along former rail lines. In a nod to this former history, the CPT building itself has been designed to reflect a railway worker’s hut, sitting alongside the recently renovated Millers Dale Station Goods Shed.

The Changing Place Toilet facility, supplied by Danfo, includes an accessible peninsula toilet, a height adjustable changing bench, and a ceiling hoist – electrically operated for ease of use by family, friends or carers.

It has been funded by a range of regional and national partners including the Peak District National Park Foundation, Accessible UK, Muscular Dystrophy UK, and the Peak District National Park Authority in partnership with High Peak Borough Council through the Department for Housing, Communities and Levelling Up.

People need a RADAR key to access the facility. These are widely available to buy including from visitor centres and online, allowing access to facilities nationwide.

The development at Millers Dale’s old station includes disabled access to the former goods shed and platforms (ideal for picnics or a visit to the café) with easy access onto the Monsal Trail which historically carried trains between Manchester and London. The Millers Dale visitor hub and 8½-mile trail which runs between Blackwell Mill and Bakewell, are owned and managed by the Peak District National Park Authority.

Girlguiding Sheffield new leadership team

A new team to lead Girlguiding Sheffield for the next five years, comprising Jemma Taylor as county commissioner, Alison Brown as assistant county commissioner and Sue Hubbert as county President, has been announced. Alison is also the leader of Brownies and Guides in Dore.

The outgoing county commissioner Wendy Howard and President Jane Carroll handed over to the new team at a celebratory event held recently at Girlguiding Sheffield’s Whiteley Woods Outdoor Activity Centre.



Photo: handover of the County Standard (L-R) Jane Carroll, Wendy Howard, Jemma Taylor, Alison Brown, Sue Hubbert

The Changing Place toilet can be found at Millers Dale car park, post code SK17 8SN or What 3 Words: ///oldest.headlight.quietly.

A virtual tour of the new CPT with Accessible UK’s Gillian Scotford can be found at www.peakdistrict.gov.uk along with further information about visiting the Monsal Trail and other accessible opportunities in the Peak District National Park.

Peak District National Park

Consultation on planning issues – have your say

Those who live, work in and visit the Peak District National Park are being asked for their views on strategic planning issues as part of a Local Plan Review consultation – the first review of its kind in around 15 years.

Views are being sought on house building, developing business and commercial properties, as well as protecting green spaces and the environment.

So far the current Local Plan has delivered affordable housing schemes at Bakewell, Bradwell, Taddington, Winster and Youlgrave; approvals for alternative renewable energies at Aldwark and Meerbrook; improvement of the visitor experience at Millers Dale station; replacement of two village halls at Over Haddon and Parwich; business developments at Deepdale and Riverside in Bakewell; replacing older buildings with new ones that support PDNP policies for conservation and recreation, such as the Boot and Bike hotel in the Hope Valley.

The Peak District National Park Authority’s new local plan will shape future development in the National Park to 2045 and will guide decisions on development proposals and planning applications in the National Park – including everything from housing to quarrying.

The public consultation runs until 29th November. The consultation document is online and accessed via an interactive portal as well as being available as a downloadable pdf. Visit peakdistrict.gov.uk/localplan for more information.

Paper copies of the consultation document are in local libraries, at the National Park headquarters at Aldern House in Bakewell, at constituent local authorities’ offices, and with all Peak District National Park parish councils.

The ceremony saw the outgoing team handing over the County Standard, a delicate, finely decorated flag specially created when Girlguiding Sheffield was formed.

Jemma and Alison’s roles include leading the charity as a trustee, health and safety, risk assessments, finance and compliance, safeguarding, and ensuring the organisation remains engaging for its current members and those it hopes to recruit. As a fully volunteer led organisation, weekly groups and other activities are reliant on volunteers to keep them open and now is a great opportunity to get involved. Anyone who is interested in volunteering is invited to get in touch at girlguiding.org.uk/volunteer

The Three Musketeers – Le Panteau!

Baguettes, a giant snail and a majestic quiche. These are just some of the wilder (but very French!) elements in this pantomime take on The Three Musketeers, a swashbuckling panto for adults and older children.

We follow farm boy D’Artagnan as he navigates the streets of 1650’s Paris trying to thwart the evil Cardinal’s plans to destroy the honour of the Queen of France. However, with his overprotective auntie in pursuit, can our daring hero and his new musketeer friends undo the sinister scheme before it’s too late?

Performances are at Hope Methodist Hall, Edale Road on Wed 27th - Sat 30th November, 7.30 pm nightly (doors open at 7pm – seats are not numbered). Tickets (£10 or £8 for under 16s) are available from www.ticketsource.co.uk/hadit or through Carolyn on 01433 620665.



It's been a busy few months since the last issue of Dore to Door with the Party on the Green and the Dore Show, as well as planning for the Lantern Parade and making progress with the Green Infrastructure Strategy.

The annual Party on the Green was again a great success.

It was another sunny day, and all the visitors were entertained with some great music, children's entertainer and a face painter. With a pizza van and ice cream it made for a fantastic afternoon, and we got some new members too.

Dore show was the following weekend, and although the weather was downright miserable, we still had a large turnout. The market stalls on Savage Lane are a lovely addition and I would like to thank the Rowan School for donating their takings to the More in Dore playground project. Congratulations to everyone involved in another successful show and particular thanks to Keith, who stepped in to chair the committee at short notice. Many of the committee are stepping down at the end of this year so the Show committee are looking for new members. Please do get in touch if you feel you could help out.

Next on the horizon is the Lantern Parade. This will be held on Wednesday 4th December. The parade will start as usual from outside Kutz hairdressers at around 6.30pm as soon as the bus has gone past! We will parade down Causeway Head Road, turning right to go past the Devonshire Arms and gathering outside the Hare and Hounds and Dore Service Station for Christmas songs and the lighting of the tree. There will be a few stalls and local businesses will be open late for you to do some Christmas shopping. And Father Christmas can usually be found in the Devonshire Arms afterwards with lots of goodies for small children. I would like to thank Tina and her amazing team of Tree Putter Uppers for braving, what will undoubtedly be a wet and bitterly cold weekend before the parade, getting all the trees in the village up and decorated.

Our annual post-Christmas event is the Wassail walk and this year it will be on Friday 27th December. It's a 4 to 5 mile walk around the local area usually up on to Blackamoor, ending up in the Devonshire Arms for mince pies and mulled wine or a non-alcoholic alternative. It's a lovely way to blow off the Christmas

cobwebs and catch up with friends whilst getting a bit of gentle exercise. Dogs and well-behaved children are more than welcome!

In addition to the above we have continued to support the community by paying for or sponsoring events and activities such as:

- donating to various charities and voluntary groups
- funding various exhibitions mounted by the Doreways group and their hugely popular Dragon Hunt
- working to protect and improve the environment of Dore
- paying for one-off projects or events proposed by Dore residents
- protecting Dore's architectural heritage and resisting inappropriate planning. This includes producing a Dore Neighbourhood Development Plan that give us more control over what happens in Dore

All for an annual subscription at about the price of two pints of beer or a bottle of wine.

Speaking of which, you may have noticed that our subscription has increased from £7 to £10. Although this applies from 1st January 2025, it also applies to those of you who pay in November & December this year, as this is your subscription for next year.

If you pay by Direct Debit there's nothing for you to do. Our Treasurer will amend your DD to the new amount during the early part of December.

If you pay by Standing Order you will need to contact your bank and ask them to increase your SO from £7/£14 to £10/£20.

If you pay by bank transfer, debit/credit card, cheque or cash all you need to do is to remember to pay the increased amount.

We would like to thank all our members for their continued support, and for their generous donations.

Jen Donnelly



September marked the 60th anniversary of the formation of the Dore Village Society. You can read more about this momentous occasion on pages 24-25



Oven Wizards
We clean your oven... so you don't have to

Call today to have your oven, hob, extractor or Aga professionally cleaned

Pippa Weir contact details
Tel 0114 258 3466,
Mob tel. 07716 992648
www.ovenwizards.com





New Headteacher at Dore Primary

I am delighted to be given the opportunity to introduce myself as the new Headteacher of Dore Primary School. I started in September, I am very happy to be here and see the role as a privilege. I would very much like to work with the local community and it was suggested to me that the school could resurrect a regular connection with the Dore Village Society and Dore to Door. I am keen for the school to have a positive relationship with the local community it serves - I have already started to work with the amazing Dore Parents Association who are busy planning events for Christmas, including a Christmas Fair and a wreath making workshop. Hopefully you will be able to see some of this yourself!

I join Dore Primary having spent the previous 17 years of my career at Brunswick Community Primary School in Woodhouse, with just under 14 years of this time as Headteacher. Before this, I worked for two schools in the north of the city as well as a stint as a maths consultant for the local authority. I chose to apply for the role here at Dore Primary as I am ready for a new challenge in a different area of the city. I spent time visiting the school during the summer term and met with Mrs Glossop (the previous Headteacher) and other staff members and governors to start to get to know the school.

I am so impressed with what I have seen so far from the children and families at Dore Primary School. The children are a credit to their parents and carers. They love taking part in outdoor learning and already this term they have had several opportunities to extend their learning – including an astrodome experience, a history van, sporting events such as cross-country, football and orienteering and the chance to become playleaders for younger children.

It should go without saying that children must come first in any school. I have already seen and met many young children here at Dore who have impressed me with their positive attitude and enjoyment of school. Relationships seem positive and I have been made to feel very welcome so far. I believe in creating meaningful learning experiences which allow children to grow and develop positively in a variety of ways. The environment here certainly supports that. I admire the pupil groups here at Dore who have a clear voice and are able to articulately share their views, they will be a pleasure to work with.

In my role as Headteacher I will do all I can to ensure the best education for all of the children at Dore Primary. I have already had the pleasure of meeting many families across the school and I will be visible around the school site at the start and end of the school day. I look forward to finding opportunities to engage with the wider school community.

Neil Frankland
Headteacher

Membership Renewal and Subscription Increase

The Society's policy is to fund all of its regular running costs out of membership subscriptions, leaving other income sources to generate surpluses which can be used to build up specified reserves, make grants and donations, and to carry out activities to the benefit of the community.

Unfortunately, as a result of increases in our running costs we have reluctantly had to make the decision to increase the DVS subscription to £10 per annum from 1st January 2025.

If you wish to renew your membership, or join for the first time, you can pay by cash, card, bank transfer, direct debit or standing order by any of the following means:

1. Scan this QR code to go directly to the renewals and payment page of our website if you've not used QR codes before the process is very straightforward: using the camera on your phone hold it over the QR image. It doesn't matter whether you're holding your phone vertically or horizontally, your phone can even read the code upside down. When your camera scans the QR code you will see an icon or web address on your screen near the code. Tap this and it will take you to the renewals and payment page of our website.
2. Enter this url in the address bar of your browser: www.dorevillage.co.uk/pages/how-to-join-the-society.
3. Go to our website (www.dorevillage.co.uk), select the Dore Village Society menu tab and then "How to Join or Renew Membership".
4. Complete the membership form included in this issue and give it to any committee member or post it through the letter box at Dore Old School, enclosing cash or a cheque.



Applying for a donation from the DVS

Do you have an idea for a project, event, meeting, exhibition, publication, research, survey, etc.?

Each year the Dore Village Society supports a number of events and other initiatives with donations. For example, we support the local lunch clubs by paying for their Christmas celebration lunches, but we also welcome requests from other organisations and individuals who have ideas, events or proposals that need financial support in order to proceed.

To apply for a donation please contact the DVS Treasurer (treasurer@dorevillage.co.uk) and briefly say what your organisation is, what you do, why you want a donation, how much, what for, and how this will benefit the residents of Dore.

The criteria we apply when assessing requests are:

1. The applicant(s) must be either a charity, an individual or a voluntary group.
2. The applicant(s) must operate or be providing the service within the Area of Benefit, basically the boundary of Dore.
3. The donation must be for the benefit of residents within the Area of Benefit.
4. The need for funding must be clearly identified.
5. There must be evidence that the applicant organisation or person(s) is respectable and solvent.
6. The donation should not be for a regular contribution to general funds.
7. Requests for donations must be in writing.
8. The application must be compliant with our constitution.

To find more details about how we assess requests, to see the DVS Area of Benefit, or read the DVS constitution go to our website and select the tab Dore Village Society.

Keith Shaw

Sheffield Council Safer Roads Scheme

Sheffield City Council is bringing forward proposals for a new road safety project along a 3½ -mile stretch of the A625 along Ecclesall Road and Ecclesall Road South. Ecclesall Road is one of the city's most prominent locations for retail, dining and leisure as well as residential suburbs featuring a large number of family homes. Parents and school children use the footways alongside the A625 to walk to and from school.

Research by the independent Road Safety Foundation has found that the A625 is one of the 27 urban roads with the highest rates of road traffic collisions in the UK. To improve safety on the Department for Transport had provided the Council with £1.425 million to design and deliver the project.

The proposed safety measures fall within two main sections of the route:

Between the Pear Street Junction / Champs Sports Bar and Grill (near to the inner ring road), to Hunter's Bar Roundabout (in each direction); and

Between Hunter's Bar Roundabout and the junction with Whirlowdale Road in Whirlow (in each direction).

The proposed measures include new average speed cameras installed at key points along the route, vehicle-activated speed signs, new and upgraded pedestrian crossings, remodelling some road junctions, reduced speed limits along parts of the route, as well as improvements to signage and pedestrian footways.

An annotated map of the proposals can be found at

A625 Safer Roads proposed measures.pdf (10.3 MB) (pdf)

The accident and collision data that was used to inform the proposal is at

A625 Collision Data.pdf (2.94 MB) (pdf)

Both these documents can be downloaded from haveyoursay.sheffield.gov.uk.

Councillors' Surgeries

At Dore Old School on the second Saturday of each month, from 10.30am-12pm.

The surgeries at Tootley Library are on the second Monday of the month, from 6pm-7pm.

Contact Dore to Door:

Editor: Keith Shaw

editor@doretodoor.co.uk

Tel: 0114 236 3598

Post: Dore to Door, c/o Dore Old School, Savage Lane, S17 3GW

Advertising: Richard Courcier

advertising@doretodoor.co.uk

Tel: 07583 173 489

Distribution: Gillian Farnsworth

Tel: 0114 235 0609 if you haven't received your copy or if you'd like to help with distribution

Deadlines for the Spring edition:

Editorial – January 24

Advertising – January 22

Spring publication: February 21

Dore Village Society

Registered Charity No. 1017051

The Society is the designated Neighbourhood Forum for the Dore Area, with responsibility for preparing a Neighbourhood Plan for Dore. The Society also aims to foster the protection and enhancement of the local environment, amenities and facilities within Dore, to encourage a spirit of community and to record its historic development.

Membership of the Society is open to all residents of Dore, those who work in Dore and elected local council members for Dore. Membership is also open to Corporate Members representing societies, associations, educational institutions and businesses in Dore.

Current membership rates are £7 pa for individuals and £35 for corporate members.

Telephone numbers of Committee Members and associates are below; for email, please write to firstname.surname@dorevillage.co.uk, e.g. jen.donnely@dorevillage.co.uk

Committee Members:

Chair	
Jen Donnelly	262 1861
Deputy Chair	
Caroline Davies	07764 169197
Secretary	
vacant	
Treasurer	
Colin Robinson	0777 855 8555
Cath Fallaize	
Planning	
Philip Howes	236 9156
Archives	
Dorne Coggins	327 1054
Membership	
Joan Davis	07531 183438

Dore to Door

Keith Shaw 236 3598

Website/Social Media

Andrew Cameron

Environment

Margaret Peart

Neighbourhood Forum Steering Group

Christopher Pennell 235 1568

Community Activities

David Bardsley

More in Dore

Julia Watkinson

Notice Boards

Caroline Davies 07764 169197



Published by Dore Village Society

Opinions expressed in letters, articles and services offered by advertisers are not necessarily endorsed by the publishers.

No part of Dore to Door may be reproduced in full or part without prior permission of the Editor on behalf of the publishers.

The Editor retains the right to edit or amend any letter or article sent in for publication.

In view of the possibility of human error by the authors, editors or publishers of the material contained herein, neither the publisher nor any other party involved in the preparation of this material warrants that the information contained herein is in every respect accurate or complete, and they are not responsible for any errors or omissions or for the results obtained from the use of such.

Readers are encouraged to confirm the information contained with other sources.

Copyright Dore Village Society 2024

Printed by The Manson Group Ltd.

www.mansongroup.co.uk



National
Trust



Christmas Trees at Longshaw

Choose your perfect Christmas tree with the help of our rangers, as you support our conservation work in the Peak District.

Longshaw, near Sheffield, Derbyshire, S11 7TZ | From 23 Nov, 9am-3.30pm



Caring for the local landscape for over 25 years



TREES - Felling, pruning & advice
HEDGES - Trimming, lowering & removal

07393 878091

www.toleytreecare.com

steve@toleytreecare.com



QUALIFIED ARBORIST • FULLY INSURED

We offer a very tidy service with all green waste fully recycled

Volunteering – a lifelong Journey for Angela Rees



Angela has a long and varied history of volunteering, both here and overseas where work and volunteering have resulted in travel to isolated and deprived areas, and to countries with unstable regimes.

Angela lives in Dore where, during the early years of her teaching career, she taught at Dore Primary School. Her earliest experiences of volunteering were in her teenage years as a Sunday School teacher and youth worker. Both teaching and voluntary work have played significant roles in her life ever since.

Throughout a successful career in teacher education locally, nationally and internationally, opportunities arose to develop and use her professional experience and transferrable skills in a voluntary capacity, both in the UK and overseas; skills very much developed within a university setting through teacher education, leadership and management.

In the UK, Angela's volunteering has included, and still includes, governance within schools including for a few years being Chair of Governors at Dore Primary School. She has for many years been a governor of Birkdale School. Voluntary work for the Diocese of Sheffield includes being Church Warden and a member of the Cathedral Chapter, formerly having been a member of the Diocesan Board of Education, Whirlow Spirituality Centre and the Archer Project - working with homeless people.

Angela derives much joy from travelling, getting on the inside of overseas cultures and communities, learning with and through others. Over the past 25 years opportunities have opened up to help her to understand that the world's resources, if used wisely, can bring about change and social justice. Working as part of teams on short term projects of about three weeks, and underpinned by her Christian faith, has taken her as far afield as Nepal, Montenegro, the Philippines, Burkina Faso, South Africa, Uganda, Malawi, Mozambique and Rwanda.

I was fascinated to learn of Angela's work with Third Culture Kids (TCKs). These are children of parents working for Non-Governmental Organisations or NGOs, for example as care workers or missionaries, often in isolated parts of developing countries. TCKs often move between cultures before they have fully developed their cultural identity. They have less opportunity for a formal education, and it is their parents who teach them. This is the point where Angela's experience can make a difference, by helping the parents and others to teach and prepare the children for life in both their parents' and their present cultures.

One of Angela's most memorable times in overseas work was working in the Peace Garden School in Nepal, memorable not just because of the amazing work done in the school and the contributions of a group but because of the experience of trekking. Wonderful as the trekking was it was frustrating to observe the students more or less sprinting up the mountains leaving the handful of adult volunteers lagging behind. There always seemed another mountain to climb! However, as Angela recalls, the accompanying Sherpa's advice was brilliant. In very broken English and pointing downwards, he said "Always look down at your feet, take one step at a time." What wise words from which we can all learn when the 'mountain' ahead seems insurmountable.

I also asked about inspirational visits, of which there are many. In November 2023 Angela was in Kumi Primary School, Uganda, a school with minimal resources and class sizes of anything between

70 and 130 pupils. In one classroom she walked into there wasn't a teacher in sight, but you could hear a pin drop; the children were concentrating intently on their learning. An education and place at the school is so highly valued by parents and children alike, demonstrating that it is not all about resources. This inspired Angela on her return home to raise money for the school. The £2,000 raised would not have gone far here but was a significant gift enabling more children to have a daily bowl of porridge (£1 provides a pupil with porridge each day for a month), and a few desks for the newly built classroom.

I was interested to know how the volunteering thread had woven its way through her life. Angela was clear that you need to be passionate about whatever you do as a volunteer, be responsive, adaptable and believe that every little thing given freely can make a difference to someone else's life. Doing something different makes life so interesting. For anyone who is considering volunteering "Be like an eagle, fly high, take your time and look around". There are endless opportunities.

Angela's young grandsons always eagerly await her return from overseas volunteering, enjoying the locally produced honey she brings, and laughingly asking 'Grangela, where are you going adventuring next?' What a role model for young people she is!

I asked Angela if there are times when you must let go and pass on the baton to someone else? The answer to that is 'yes' and pre Covid she decided to cut back on some volunteering activities (including being Secretary to the Dore Village Society committee) and focus on just three, namely Sheffield Cathedral, school governance, and overseas volunteering.

I can see how Angela has sustained her volunteer work - as she says, you give but receive so much more in return.

Interview by Anita Campbell



Dore and the Royal Mail –

Part 2

From about 1880 improvements to the postal service gathered speed. Posting boxes, known as wall boxes, began to be installed. By 1883 one was provided at Dore Station which also boasted a telegraph office. Totley acquired its post office in 1887 and Totley Rise two years later. In 1895 Dore saw a doubling of its postal service with a new, late morning dispatch of the mail and an afternoon delivery from Sheffield. You can picture the growing business and professional community of Dore New Road pressing for this behind the scenes. Seven years on, additional late collections were announced: 8 pm from Dore PO and 8.30 pm from the station wall box.

A Royal Mail romance

Having reached his mid-seventies Elisha Parker would have been glad to hand over the post office business in 1897 to Thomas Marshall, Dore's well-known pork butcher and grocer. His shop facing the Hare and Hounds stood at the south end of a row of cottages, where the post office was installed two doors along with the family. That same year teenager Herbert Jackson from Attercliffe took over as Dore's postman. The energetic Thomas greatly improved facilities with a money order service, a savings bank and an insurance agency. Herbert married his daughter Mabel on 19 November 1900 and took over the post office too. It seems like a dowry. Given his combined role, Mabel must have often been behind the counter.



By 1911 the Jacksons and the post office had relocated to the corner of the High Street and Townhead Road. It had developed into a shop where Herbert had a new line in local picture postcards published by himself. Then after fifteen years of struggle by Norton Rural District Council and Dore Parish Council the Postmaster General agreed in January 1914 that Dore should also have a telegraph service. With hindsight the date was ominous. The new service required a new private telephone line to the post office, though the Jacksons had hosted a public one funded by the parish since 1907. Who would have imagined in those pre-war days that this innovation would be the channel whereby Mabel would receive War Office news of Herbert, who had joined up in 1916, being wounded at Passchendaele in November 1917 and dying in hospital two months later?

Thomas Marshall himself at the age of 72 had become Dore's postman after his son-in-law enlisted. Mabel also took part in deliveries. Early in 1917 when she called at Moorview Farm, George Wilbraham's dog bit her on the leg and she took the farmer to court. After the war our postmen mostly become anonymous but we can trace the postmasters. In 1919 Mabel was running a drapery business alongside the post office. About 1920 Arthur Spooner, an ex-serviceman, took it over along with the lines that the Jacksons had developed: drapery, stationery, confectionery, tobacco products and the postcards too. It was probably he who moved it across the street.



- A Family Business, Established 1954 -

At Dore Service Station we are proud to be known locally for going that extra mile.

- We offer a full range of dealer equivalent motor vehicle services including **M.O.T** tests, small and comprehensive **services** and **diagnostics**.
- We provide an emergency local recovery and **breakdown** service.
- Can arrange a **free reminder call** when your car's service and M.O.T are due.
- Courtesy wash
- **FREE COLLECTION & DELIVERY***
- **FREE Courtesy car** available.

Call to book your car in today or come in to speak to one of our members of staff, we'll be more than happy to help!

Dore Service Station Ltd.
12 Townhead Road, Dore
Sheffield, S17 3GA. 0114 236 4691
info@doreservicestation.co.uk



Local Specialist Advisers in

- Wills
- Inheritance mitigation
- Trusts
- Lasting Power of Attorney

3Sixty Estate Planning Ltd prides itself on its ability to offer its clients the highest standard in professional estate planning, given by friendly, qualified advisors at an affordable price.

Best of all, initial consultations are free of charge and free from obligation, and we can offer appointments either in our prestigious offices in Hathersage, over the phone or via video call.

We appreciate writing a will can be a sensitive matter and we always work hard to treat our customers with care and compassion, no matter your personal circumstances.

To book an appointment visit www.3sixtyep.co.uk or call 01433 424 360



Postmasters and pub landlords

In 1920 James Hurst followed Mrs Helen Witeman as licensee of



the Hare and Hounds. He rented the whole block from the Hope and Anchor Brewery and installed his wife Sarah Ann in the first and smallest of three shops, where she had a draper's, adjoining the pub. The other two were sub-let. In the middle was the post office and at the end was Thorpe's the butchers. In 1924 Arthur Spooner began to describe himself as stationer and sub-postmaster, perhaps to keep on good terms with his draper landlady, but in the 1927 directory he has disappeared and Mrs Sarah Ann Hurst is draper and postmistress. Her daughters evidently ran the place; vicar Gibson in his book on Dore certainly thought that 'the Misses Hurst' – Monica, 23 and Joyce, 18 - were in charge.

When the 1920s turned into the 1930s more changes were afoot. Mrs Hurst was still there but her husband had been replaced by Frank Clark, still well remembered. By 1931 Sarah Ann had

handed over the post office to Robert Stanley Mace and the shop on his right was a grocer's run by a Miss Shaw. Stanley started a newsagent's as well but it was his wife Hilda who, Reg Skelton reminisced, 'used to run around t'village delivering papers', six days a week and twice a day. (This is where elderly Dore people recorded in the early 2000s have their say.)

According to Jean Dean, Stanley had been a professional footballer. She remembered him sitting behind a wire grill and tending to be grumpy. His pet hate was being given a lot of small change. The mail was sorted in a big room over the shops, the Clarks' daughter Jean Pearson recalled, and in the 1940s Kath Marshall's aunt Sarah Sylvester was the village postwoman. The Maces were in charge of the post office for upwards of thirty years. They moved out about 1962. F. and E. Thorpe took over the newsagent's but the post office found a new home.

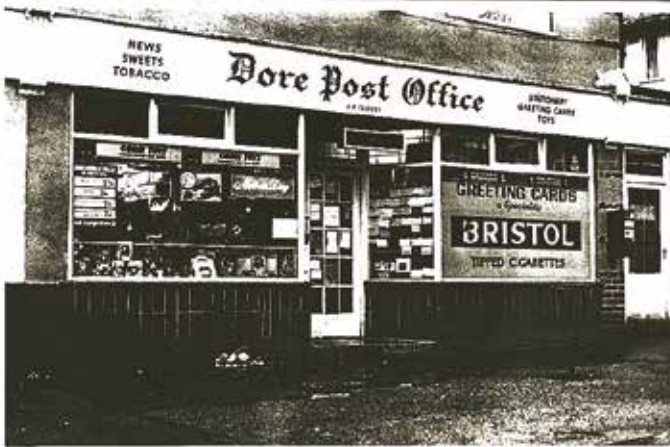
Two more moves, then to limbo and back

Michael Mower was running a rival newsagent at 37 Townhead Road and by 1963 the post office shared this address. That's why the posting box is there today. By 1971 E.R. (Reg) Clover had taken over both operations, founding a postal dynasty that would endure almost half a century under his widow Brenda and their daughter Penny. But what would happen when she retired in 2016?

Mr Z. Ahmed, who preferred Ahmed alone, came to the rescue just in time. A professional newsagent, he had spent twelve years at Toley Rise before retiring. Then the Dore newsagent's (the Village Store) in Causeway Head Road came on the market in 2015 and back he came from retirement. Soon he would be re-modelling the shop to accommodate the post office and on 23 May 2016 it moved there. Sadly after almost two years Ahmed fell ill and the post office closed on May Day 2018. The reason given was that nobody else available was qualified to run it. The shop continued, then this year the lease expired. The landlord found a new tenant recognized by the national Post Office, the shop reopened under the Premier banner and postal services followed in June. Truly the age of miracles is not yet past.

John Dunstan

With thanks to Dorne Coggins for pictures from the Dore Collection. The photos are explained by the text but you may have noticed a major omission: the middle shop in the old Hare and Hounds complex. The Collection appears to lack anything showing this from the 1920s to the 1950s when Arthur Spooner, Sarah Ann Hurst and Stanley Mace were in charge. (We have one from the early 1960s showing F. and E. Thorpe's shop but the PO had moved by then.) If you can help to fill the gap by a gift or a loan for copying please contact Dorne on 0114 327 1054.



Apple Landscapes and Paving
 Driveways, block paving, natural stone and porcelain patios, walls and full garden renovations.
 Established over 21 years. Fully insured.
 Call Darren on: 07782167540 or 01246 237505.
 Find us on Facebook, under Apple Landscapes

FIRS FARM SHOP
 Ringinglow Rd S11 7TD

Home reared Beef, Lamb – joints, steaks etc
 Christmas Geese & Turkeys

Home made sausages, burgers & Home cured bacon
 Eggs & potatoes

Open Thursdays 1pm-5pm
 Fridays & Saturdays
 9am until 5pm

Tel 01142301169
www.firsfarmsheffield.co.uk



OUTRAM FIELDS
CINNAMON LUXURY CARE

**NOW
OPEN**
BOOK A TOUR
TODAY

Planning

FOR FUTURE LIVING EVENT

TUESDAY MAY 21ST 6PM-7.30PM

We invite you to join us for an informative legal and financial event on planning for future living where we'll guide you how to effectively manage and pay private care home fees.

Speakers - Erica Dietsch and Jonathan Rowley (Hamnett Wealth Management) and Suzanne Porter (Wake Smith Solicitors). Our speakers will give independent advice on:

- ❖ The importance of having a will and Lasting Powers of Attorney and why you need both Finance and Health and Welfare
- ❖ Navigating the care maze – options available to pay for private care fees including: Equity release, care annuities, sale of property, investments
- ❖ Insights into the sensitive topic of deliberate deprivation of assets



CANAPÉS &
REFRESHMENTS
WILL BE SERVED

As places are limited, booking is essential so please call Claire on **01144 930 736** or email: outtram.haa@cinnamoncc.com to reserve your place.



RESIDENTIAL CARE | DEMENTIA CARE | RESPITE CARE | POST OPERATIVE CARE

Luxury Care Home in Sheffield

Outram Fields Care Home, 250 Twentywell Lane, Bradway, Sheffield S17 4QF

www.cinnamoncc.com/outramfields



High Diver Makes Waves

Archie Biggin, a year 12 student at King Egbert School, recently made history by becoming the youngest-ever cliff diver to join the Red Bull Cliff Diving World Series (as a wild card), and in the process became a member of an elite group of cliff divers taking part in competitions around the world.

Archie has been diving since the age of 6 as a member of Sheffield Diving at Ponds Forge. He began learning high diving skills at the age of 11 as a result of seeing the "Barani" (a feet first entry) on YouTube. He has balanced an intense regular and high diving training and competition calendar since. His first experience of competition was at the International Cliff Diving Championship in Ponte Brolla, Switzerland, in 2022. Competing in the adults category, aged just 14, he came 4th out of 30 divers.

More recently, no sooner had he finished his GCSEs than he was off to Austria to train up to 27m to gain a 4 dive competition list. This was followed by a trip to watch the Red Bull Cliff Diving Competition in Italy. He was awarded full athlete status and invited to train with other elite divers in Polignano for the weekend. He then gained an invite to his first ever senior 27m competition at the Vertigo Cliff Diving Competition in Trieste, one of the premier events in the high diving calendar. Archie came 7th out of 12 and was the highest placed diver who was not already part of Red Bull's permanent or wild card roster. Red Bull had watched him compete and that evening invited him to be a wild card diver the following weekend in Ballycastle, Northern Ireland. In front of 10,000 spectators.

Archie made history by becoming the youngest-ever Red Bull Cliff Diver. That was followed a fortnight later by another Red Bull Wild Card spot in Oslo and then an invitation in September of this year to attend the first ever Red Bull High School, a week long training camp in Austria. He will be with just six other divers selected from around the world who Red Bull hope to build up to World Cup level.

Well done Archie and keep flying high.

**Keith Shaw /
Photographs by
Dean Trem**



Local fundraiser is just 7 years old!

Seven-year-old Edward has raised £1398 for the Motor Neurone Disease Association after losing his Nannie to the disease when he was just four years old.

Jean, originally from Heeley, moved to Dore in 2003. Very much the life and soul, Jean loved socializing in the village with family and friends. In 2019 Jean was diagnosed with the rare and incurable disease MND; defiant in her battle she continued to do everything she loved most. Frustratingly, the isolation of Covid later deprived Jean of time with her family and friends and she finally lost her battle on St Valentines day 2021 at 77 years old leaving behind Roy, her husband of 50 years, two children and four grandchildren.

Although only knowing his Nannie for 4 years, Edward distinctly remembers the short but precious time they had together. Inspired by other fundraising stories Edward decided it was his dream 'to make his Nannie proud up in heaven' and decided to organize his own fundraising challenge in her memory.

Edward is a big Sheffield United fan; he enjoys playing football, cricket and tennis with friends and for local teams. However, he decided that during the month of July, he would hang up his football boots and give up his spare time, replacing them with a 60-mile sponsored walk in hope of raising his target amount of £250 for MNDA.

At 6am on the first of July Edward's challenge began; he dragged his mum, dad and cockerpoo out of bed for what became a daily two-mile morning walk before his school day began. The early starts were a shock to the system, but he soon got into the swing of things and after a couple of days he was completing his daily miles in record time.

At weekends Edward and his family took advantage of our beautiful local countryside, clocking up the miles through Gillfield Wood, over Blacka Moor and on one occasion choosing to walk a seven-mile round trip to Greggs, for his favourite snack of course!

For the most the weather was good to Edward and when the sun shone picnics were eaten, when the heavens opened, he sheltered under trees with the sheep. No matter what the weather or how tired he was Edward kept on working tirelessly towards his target.

On the 28th of July Edward and his dad walked 8 miles from Totley to Baslow bringing the total miles walked to 63 and completing his challenge 3 days early.

Finishing with a well-deserved Coca-Cola at The Devonshire Arms, he quickly rang mum to come and pick him up!

In total, Edward raised £1398 smashing his original target of £250. Nannie Jean would most certainly be proud of him, as are we all.



**Article written by Edward's mum
Well done Edward - Editor**

AIMS

Accountants for Business

Tax advice and planning

Accounting and bookkeeping

Regulation and compliance

Business advice and support

Mark Randall FCA

T: 0114 275 0461

M: 07908 592007

E: mark.randall@aims.co.uk

W: www.markrandall.aims.co.uk

WRIGLEYS
— SOLICITORS —

WILLS & TRUSTS

SPECIALIST WILLS & TRUSTS SERVICE

- Asset Protection
- Inheritance Tax Planning

Wrigleys solicitors are local to you and experts in this area of law. We are experienced and sensitive to your needs.

For a FREE, no obligation discussion, please contact:

Peter Clarkson: peter.clarkson@wrigleys.co.uk

Jane Netting: jane.netting@wrigleys.co.uk

Sheffield Office t: 0114 2675588

wrigleys.co.uk

Lexcel
Practice Management Standard
Law Society Accredited



We support Dementia Friends
dementiafriends.org.uk



brightman clarke architects

We value close collaboration with our clients, providing a bespoke, high-quality RIBA architectural design service tailored to your needs.

Instead of diving in at the deep end, consider our 'Kickstart' pre-appointment design consultation package. It offers a genuine insight into our approach without an obligation to appoint us. For more details, scan the QR code.

RIBA 
Chartered Practice



Brightman Clarke Architects, 32 Causeway Head Road, Dore, Sheffield, S17 3DT
Tel: 0114 236 1366 | Email: info@bcarchitects.co.uk | www.bcarchitects.co.uk



I might as well have done a cut and paste from the introductory paragraph article for the 2023 winter edition. Once again it has been a very wet autumn after another unremarkable summer. The copious amounts of rain and the resultant growth in our gardens meant that you could regularly hear the sound of hedge trimmers across the village even before the end of the bird nesting season, the end of July.

The abundance of greenery has been a problem this year.

Those of us who left our annual hedge trimming, like me, until later in the year, have had a disposal problem with grass and hedge clippings, particularly in view of the erratic service of the green bin collection.

At the time of writing there is only one more Dore Garden Club event in the 2024 diary. The timing of publication and/or delivery of your magazine may mean it has already taken place by the time you receive it. If not, here is a quick reminder of what's on in November.

Wed 20 November: Exploring the Winter Garden by Deidre Leaman

Deidre and husband Carl grow and stock hardy and annual plants on site, including some unusual varieties of shrubs and bulbs at Millthorpe, a small, friendly nursery tucked away behind the Royal Oak pub at the bottom of Millthorpe Lane.

During the long winter months many of us would like to look out of our windows and be cheered by something more colourful and interesting in the garden. Deidre will show us how we can achieve this aim and encourage more wildlife into our gardens.

Our very short AGM will be held before Deidre's presentation.

The Garden Club takes a break between December and February, and we resume in March 2024.

Here's what you can look forward to next year, courtesy of our Programme Coordinator, Jean Dykes:

Wed 19 March: **Gardening for Year-Round Interest** by Jayne Conquest, plantswoman whose garden opens for NGS (the yellow book)

Wed 16 April: **Why Alpines?** by Mark Padgett, alpine nursery owner

Wed 21 May: **Bees, Wasps & Ants** by Graham Appleby, Rivelin Valley task team leader and conservationist

Wed 18 June: **Topic to be Confirmed** by Joseph Peatfield, plantsman and garden designer

Wed 16 July: **Flowers & Gardens of the Canaries** by Hilary Hutson, plantswoman and lecturer

Wed 17 Sep: **Small bulbs & Snowdrops throughout the Year** by Michael Myers, plantsman and lecturer

Wed 15 Oct: **People, Plants, Pleasures & Passion** by Don Witton, lecturer and plantsman specialising in euphorbias.

Wed 19 Nov: **Mount Grace Priory: Chris Beardshaw's Arts & Craft style garden** by Dr Michael Klemperer, Senior Gardens Advisor for English Heritage since 2016.

Pauline Drissell

Many locals are not aware of this "hidden gem", off Ecclesall Road South, but to those who do know that, it is a haven of peace with a large number of trees packed into a disused quarry. Started as a private garden by Victorian local businessman, Samuel Doncaster, it was later donated to the city and is now open to all. For many years it was neglected and overgrown, until a Friends group was formed and, with the help of a Heritage Lottery grant in 2011, volunteers worked to make it accessible again.



The stars of the garden are a pair of Sequoia (Giant Redwood) trees grown from seeds collected by Samuel Doncaster on a visit to California. These were recently joined by a third, much younger sequoia, donated by a Dore resident. Other trees and shrubs in the garden include colourful acers, azaleas and rhododendrons. Giant gunnera plants grow by the largest of a series of ponds; snowdrops and daffodils make their appearance in the

spring, then heritage roses and various heathers add to the colour to the garden. Children love to walk along the old mill stones in the bog garden.

Maintaining this garden is a year-round job; the Friends of Whinfell Quarry garden hold a working morning on the third Saturday of each month. All are welcome to come and join in; jobs vary from weeding and planting to clearing ponds and painting benches. Volunteers meet from 9.30 am by the main entrance, enjoy a coffee together mid-morning and work until lunchtime.

More details and pictures of the garden can be found at the Friends of Whirlow Quarry Garden Facebook and Instagram pages. The garden entrance is on Whirlow Bridge, off Ecclesall Road, near to Whirlow Brook Park, S11 9QD.

Phil Winn



SOLD SUBJECT TO CONTRACT

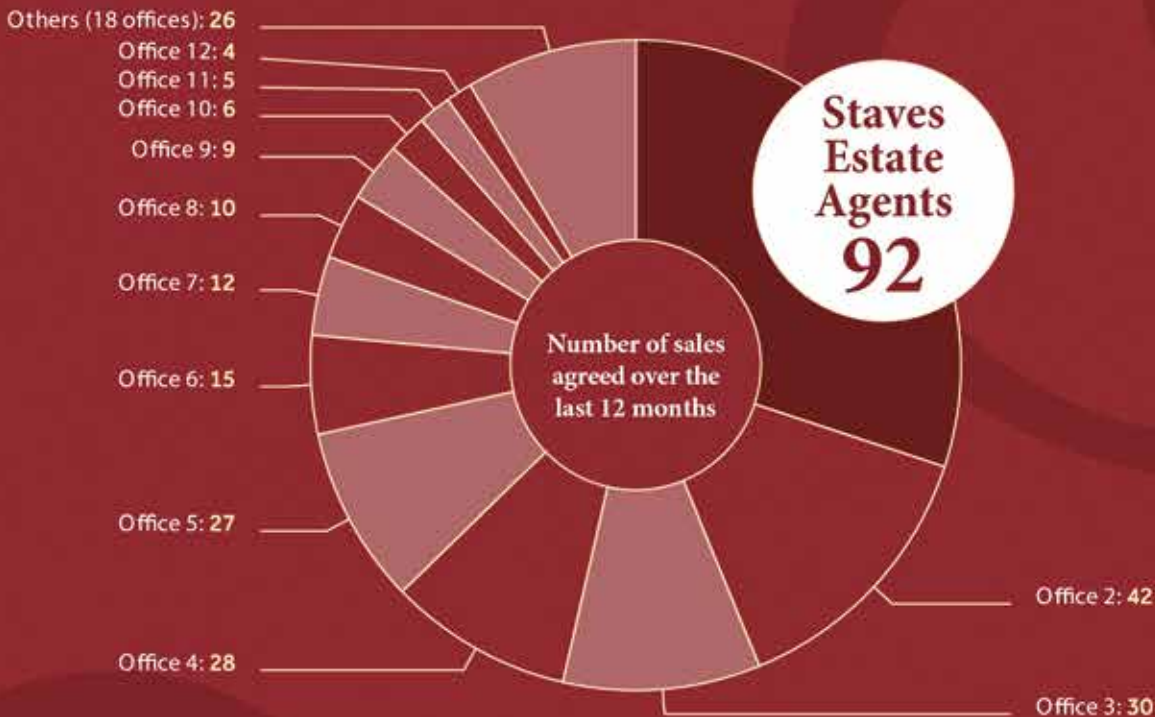
(0114) 2746400
www.stavesestateagents.co.uk



Successfully selling in your area!

We are experiencing strong demand for properties in Dore. If you are considering selling, call us today for a free without obligation market appraisal of your home. We have genuine buyers waiting!

Selling more properties in S17 than other agent!



Alternatively if you are considering letting your property, please contact our dedicated lettings department to find out more about our landlord services and fees.

(0114) 2746400

2A Bushey Wood Road, Dore,
Sheffield, S17 3QB



info@stavesestateagents.co.uk | www.stavesestateagents.co.uk



It has been a busy few months since returning to Parliament. Since my last update, I have had the privilege of serving on the Great British Energy Bill Committee, which means I have been scrutinising the Bill line by line and taking evidence from people across the energy and climate sector. The aim of Great British Energy is to boost investment in renewable energy projects, such as offshore wind, and help the UK become energy independent. This new publicly-owned company will own, manage, and operate clean power projects across the country, facilitating clean energy production, distribution, storage and supply. It will also play a key role in reducing greenhouse gas emissions from fossil fuels. The Bill has now successfully passed the committee stage and will soon return to the Commons for further debate by MPs. This is the first major piece of legislation in this Parliament, and I am proud to be involved.

I am pleased to announce that I have been elected to the Environmental Audit Committee. This committee is responsible for reviewing how government departments and public bodies are contributing to environmental protection and sustainable development. We will be closely auditing their progress towards achieving environmental protection and sustainability targets, ensuring the UK stays on track to meet its green goals.

I am also pleased that I have been re-elected as Chair of the All Party Parliamentary Group on Special Educational Needs and Disabilities (SEND). I look forward to working with colleagues

From our Local Councillors

In the last edition of Dore to Door we explained how having the local & national elections so close to each other had created a backlog of decision making in the Town Hall due to strict legal restrictions on what local politicians can and cannot do in the run up to the votes. Thankfully that backlog has largely been cleared and Finance and Planning issues are now to the forefront of our work in the Town Hall. With a new national government this year's autumn Budget will be even more critical as many local authorities are facing financial uncertainty. In Sheffield there are already major concerns over the overspend on the Council's day-to-day finances and discussions on next years' budget will be even more difficult.

We are also very concerned about another announcement on the Police Budget. This is now managed by the South Yorkshire Mayor who reported that a "fundamental accounting error" has led to a £65 million hole in South Yorkshire Police's finances. This is equivalent to nearly 20% of their annual budget, which is a staggering figure. Our colleagues who sit on the Mayoral Scrutiny Committee will be seeking answers, particularly on the implications for local policing.

Another issue which prompted several concerns from residents is the demolition of the Mercia Motors site on Abbeydale Road. Planning permission for this work was refused in 2021 because it failed to address concerns over the impact on water quality and the aquatic environment of the river Sheaf, which runs along the back of the site. When work began again without approval from the Council, Martin contacted the Planning Enforcement team who instructed the contractor to stop. A new planning application has been submitted with a proposal on how the river will be protected and, at the time of writing, it was still being considered by the local authority.

We have also been in contact with the Council about the millpond for Abbeydale Industrial Hamlet. (The millpond sits within the ward boundary, but the museum does not). The millpond was emptied some time ago due to concerns over the condition of the dam wall and the subsequent risk to heritage assets. Specialist contractors are working on the best way to undertake repairs, however the difficulty in gaining access to damaged areas and the understandable regulations protecting the site have meant that it is taking longer than expected to carry out the restoration. The latest estimate is that most of the works should be completed by mid-2025, however we will keep you updated when we have more detailed information.

cross-party in ensuring that children and young people with SEND have the support they need and opportunities to thrive.

Residents who have read previous editions of Dore to Door might remember my work on the Climate and Nature Bill between 2021-2023, which has garnered strong support from across parties. I am proud to still be co-sponsoring this critical piece of legislation, which had its first reading in Parliament on the 16th of October. This Bill is essential in adopting a whole-government approach to tackling the climate emergency. I look forward to supporting its second reading in January 2025 and ensuring that the UK meets its international commitments on climate and nature by 2030.

Finally, buses and travel remain a key issue in the casework I receive from residents. To ensure your views are heard, I have created a survey for residents to share their experiences with bus services in our constituency. Your feedback will help inform my work on improving local transport and advocating for Hallam residents. Please take a few minutes to complete the survey and make your voice heard. You can access the survey via the QR code in this article.



Thank you for reading my update. Your voice is vital to the work I do. As ever, please do get in touch if there is an issue you are facing, or a campaign you would like me to join.

Olivia

In October Bex went on a passenger run and lunch club visit to Dore Methodist Church with Transport 17 as part of the celebrations for Community Transport Week. Transport 17 tackles the issue of loneliness and isolation directly, enabling less mobile members of the community to access coffee, lunch and social clubs.

The atmosphere was lively and fun, and everyone on the trip had made firm friends. From talking to both volunteers and passengers, it was clear that Transport 17's work makes a huge difference to our community. Many thanks to the T17 team for everything that you do



Councillor Rebecca Atkinson (left) and Transport 17 volunteers

Martin & Joe also accompanied the council's Chief Executive on a visit to the ward. We met volunteers from several community groups and had some useful discussions on the priorities for Dore, Totley & Bradway. We also thanked them for their work which helps makes this part of Sheffield such a great place to live.

As ever please feel free to contact us with any questions or feedback about Council services or come and meet us at one of our regular surgeries. These are held at on the second Monday of the month at 6pm in Totley Library, and the second Saturday of the month at 10.30am in Dore Old School.

martin.smith@councillor.sheffield.gov.uk

joe.otten@councillor.sheffield.gov.uk

rebecca.atkinson@councillor.sheffield.gov.uk



10 YEAR GUARANTEE

Suppliers and installers of U-PVC windows and doors

We can expertly install...

- Energy rated uPVC Windows
- Sliding Sash uPVC Windows
- High security uPVC doors
- Sliding and French Doors
- Bi-folding Doors
- GRP Composite Doors
- Solidor Timber Composite Doors
- Conservatories & Porches



**Email us now at - pcooke3@sky.com
Or call 07831 167 587**



GasMarkOne
Plumbing & Heating

All aspects of plumbing, heating and gas work undertaken.

- COMBI BOILER INSTALLATION & SERVICING
- SOLAR HEATING
- UNDER FLOOR HEATING
- BOILER & CENTRAL HEATING CHANGING & UPGRADING
- BATHROOM DESIGN & INSTALLATION
- WETROOM
- WATER LEAKS
- ADVICE ON ENERGY SAVING



www.gas-mk-1.co.uk

**For a free no obligation quotation call
0114 2307370 07970 498553**



**Your finances.
Our focus.**

Financial planning advice can benefit you for life. Our financial planners often work with clients for 25 years or more, offering expert advice at every stage of their life. Most clients come to us through recommendation from family members or fellow professionals.

To find out more visit pfgl.co.uk/pwg and organise a free, initial, no-obligation consultation with our financial planners today.

Perspective (Whittington Goddard)

T: 01142 351623

E: enquiries.pwg@pfgl.co.uk

pfgl.co.uk/pwg

All calls to and from our landlines and mobiles are recorded to meet regulatory requirements.

Party on the Green

An afternoon family party to finish off the Summer Holidays saw families gathered on the Village Green. A break in the weather as the sun came out allowed us to open our concert with the very energetic and talented dancers of the Gemini Dance Group, star performers who will also be leading the Christmas Lantern Parade.

The Dore Male Voice Choir entertained the gathering crowd with the first of their two sets of choral classics. Entertaining Dore residents of all ages has always been the DVS priority when arranging the Party On The Green, and the Dore Male Voice Choir royally entertained all through their two performances.

Steve Delaney, no stranger to the local entertainment scene, performed lively renditions of rock and blues classics along with some blistering guitar playing.

From just over the border in Dronfield came Mr Jon Alex, not only an accomplished pianist and musician but someone who has also produced the much in demand Elton John Tribute Show. Jon entertained with an hour of Elton John classics and had the village green singing and dancing along. A must see show that Jon is touring across the UK throughout 2024-25.

Dore's favourite children's entertainer Barney Baloney again kept the many children entertained with his slapstick humour, balloon modelling and puppet show.

Thank you to our Face Painter who made sure every child who wanted their face painted left with a smile on their face, along with the odd Dore Male Voice Choir member!

The Voice of Abba singers completed a fun afternoon, singing and dancing through to our close at 5pm.

Staging the outdoor concert so late in the summer is always a risk, but having had to cancel two concerts when we used to hold it in June was a risk that was worth taking. Thankfully the weather was kind to us, although the PA and Ground staff certainly got drenched as it rained heavily just 15 minutes after the close of the concert.

The DVS welcomes suggestions for musical performers and tribute shows that you would like to see, along with anyone who would like help and support the DVS Party On The Green in 2025.

Best wishes, and we look forward to seeing many of you all at The DVS Christmas Lantern Parade on Wednesday 4th December.

Caroline Davies, Vice Chair DVS
David Hayes





The Glen Private Nursing Home

Contact us on **0114 2365580**

www.theglenprivatenursinghome.co.uk

enquiries@theglenprivatenursinghome.co.uk

Visit us @

224 Abbeydale Road South,
S17 3LA





SILVERDALE

GARDEN SERVICES

Specialists in all aspects of professional tree surgery

- Trees re-shaped/felled
- Gale-damaged trees made safe
- Stump removal & grinding
- Pruning & dead-wooding
- Hedges & shrubs cut, reduced, or removed
- Firewood logs & wood chippings for sale
- Garden & site clearance
- Gardens tidied
- Section felling
- Grass cutting
- Garden rubbish removal
- On site log splitting

Card payments accepted

For a free price estimate contact **Bill Bingham**

0114 236 0592 ♦ 077674 92645

Fully insured & safety conscious




Rightio Plumbing & Heating

0114 358 2001

Covering all of Dore and surrounding areas.

COMPETITIVE RATES

- ✓ Fast Response
- ✓ All Work Guaranteed
- ✓ Flexible Appointment Times

12 Month Guarantee on labour!
Excludes blockages

OAP Discount
Speak to us today!

1-2 Hour Emergency Response time!



650921

OUR SERVICES

- ✓ Boiler Breakdowns
- ✓ Boiler Servicing
- ✓ Radiators & Pipes
- ✓ Tanks & Cylinders
- ✓ Toilets & Taps
- ✓ Leaks & Bursts
- ✓ Showers
- ✓ Clearing Blockages
- ✓ Pipework Replacement
- ✓ Gas Safe Certified

Unfortunately there's not enough space in this issue to include two walks but here's an easy, any time of year, family walk and news about the Wassail Walk which you're welcome to attend if you're missing a second hike in Dore to Door - **KS**

Linacre Reservoirs, a Twitchers' Trek

This is a pleasant and mostly flat and easy stroll around a group of three former reservoirs which attract a variety of birds including nuthatches, flycatchers, woodpeckers, kingfishers, shags (often seen with outstretched wings drying their feathers), herons, owls, mandarin ducks and other water birds. Did you know that mandarin ducks nest in holes in trees, sometimes high up and a long way from the water?

The surrounding fields are carpeted with bluebells in spring.

The reservoirs were built between 1855 and 1904 and, between them, they hold more than 240 million gallons of water. There are information boards around the reservoirs, one of which explains that in the 19th century poor people used the water for drinking, the middle classes for washing their clothes, and the wealthier inhabitants for watering their gardens.

The walk is suitable for families at all times of the year and is mostly free from mud, even after wet weather.

Distance: 4km/2.5 miles.

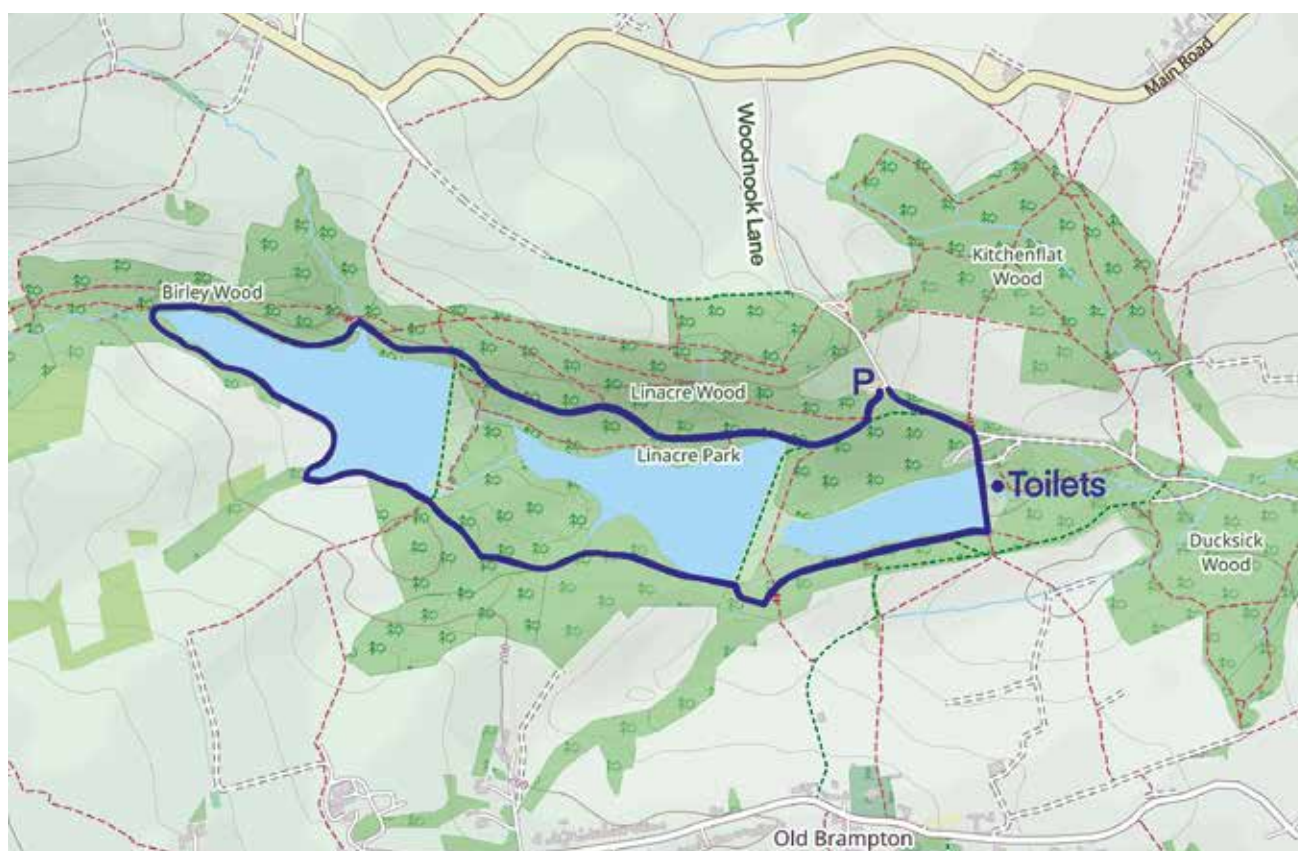
Time: one hour.

Toilets near the beginning and end of the route.

The walk commences at a pay and display car park (post code S42 7JW, grid ref: SK 3360 7269) which is just above the reservoirs. Access is down a narrow road (Woodnook Lane) leading off the B6050 between Cutthorpe and Ingmanthorpe.

From the car park walk down towards the middle reservoir and follow the path past this and the upper reservoir until you come to a footbridge across Holme Brook, the stream that feeds the reservoirs. Cross over and walk along the boardwalks, continuing downhill past all three reservoirs before turning left at the bottom of the last reservoir. Now ascend past the toilet block and return to the car park.

Wyvern Walks by Keith Shaw



Wassail Walk

The annual Wassail Walk will take place again this year filling the gap between Christmas and New Year as in the past.

Wassailing has a long history going back at least to Norse times. According to the Oxford English Dictionary, the word "wassail" derives from the Old Norse salutation *ves heill*, corresponding to Old English *hál wes þú or wes hál*; literally meaning 'be in good health' or 'be fortunate'. It was initially used in the sense of 'hail' or 'farewell'. Later it developed into the first part of a toast "wassail... drinkhail". By the 14th century, the sense had extended to the drink itself, especially to the spiced ale used in Twelfth-night and Christmas Eve celebrations, and by 1598 it was being applied to the custom of drinking on those nights.

As a result Wassailing became a way of passing seasonal good wishes between family and neighbours around settlements in Britain and parts of Europe. The tradition takes many forms, and in Dore it is celebrated as the annual Wassail Walk organised by Dore Village Society.

This Year we will be setting off on Friday 27th December at 10am from Dore Old School car park for our usual five mile meander around parts of Blacka Moor, with a shorter return option for anyone wanting a shorter walk. Children and dogs are welcome.

The terrain is usually muddy so please ensure that you are properly equipped with adequate footwear and clothing. We go whatever the weather but the route is determined on the day to take account of this.

Since pies, mulled wine, water and fruit juice will be available (free) afterwards in the Devonshire Arms for everyone who takes part no matter how far you walk.

There is no need to book, all you have to do is turn up in the Old School car park on Savage Lane for a 10am start.

I will be leading the walk again and you can contact me on 07778 422 910 or at keith.shaw@dorevillage.co.uk if you need more information.

Keith Shaw

ABBEYDALE
SQUASH & FITNESS CLUB

BALL BLAST
INTERACTIVE FUN

FAMILY SESSIONS AND PARTY BOOKINGS AVAILABLE...

GIANT INTERACTIVE GAMES REACT TO EVERY BALL!

PLAY YOUR FRIENDS AT CONNECT 4!

WORK AS A TEAM TO BEAT THE MONSTERS!

BEAT THE GOALIE!

Catered and non-catered packages available, our parties feature fun-packed activities for kids of all ages on our brand-new iCourt, led by a party leader.

For prices and more information about how to book, please scan the QR code or visit <https://www.abbeydalesquashandfitness.co.uk/ball-blast>



www.relieffrompain.co.uk

Hallamshire Osteopathy DORE

We provide hands-on treatment for:-

- Back pain and sciatica
- Neck and shoulder pain
- Sports injuries
- Arthritic pain
- Knee and hip pain
- Headaches
- Whiplash injuries
- Mobility problems
- Pregnancy related back pain
- Rehabilitation from injury

... and much more besides

Please call in for a no obligation chat & we'll see if we can help you

12 Causeway Head Road, Dore, Sheffield, S17 3DT

0114 236 9315 or 07943 589293

Dore Optician

Ian Truelove BSc(Hons) MCOptom Family Optometrist
Personal and Professional eye care for all the family

Ian and Tina Truelove have refurbished Dore Optician with the very latest technology

- Hospital-quality 3D OCT imaging allows earlier detection and diagnosis of many eye problems.
- Hundreds of frames to choose from for all the family, covering a wide range from £10 to designer.
- Home eye tests available if you are unable to leave the house without help.
- Digital retinal photography.
- ReadEZ: Coloured overlays and Enhanced reading assessments for those with reading difficulties or visual stress.
- Free comprehensive hearing assessments now available.
- Free NHS and private eye examinations – hourly appointment slots, never feel rushed.



Please contact the practice for more information, or pop in for a chat.
25 Townhead Road, Dore, Sheffield, S17 3GD

Tel: 0114 3273737 Email: enquiries@dore-optician.co.uk Web: dore-optician.co.uk



Providing NHS services and registered with the Association of Optometrists, College of Optometrists, General Optical Council



Well, we are more than halfway through 2024, the year that Transport 17 is celebrating 40 years of serving the community and enabling older and isolated individuals to get out and socialise with others within their local area. We wanted to start this month's article by expressing some thanks to local individuals and community groups. On Saturday, 15th June, it was our pleasure to join Totley Library and Totley All Saints Church in celebrating our joint 'birthday' year and the volunteers who make our organisations a success, with music from the Wisewood Prize Band. Thank you to all those who joined us. By happy coincidence, June 15th just happens to be the day, 40 years ago, that the first minibus was handed over to Transport 17!

It was an unexpected surprise to receive a small legacy from Jim Martin's estate recently. Many of you may have known him better as Jimmy and may have visited Martin's newsagent and sweetshop at the bottom of Busheywood Road. Not knowing anything about him, we have enjoyed finding out some information about Jim's life and history. Martin's shop was a meeting place for people, where all were made to feel welcome, however Jim was also an amazing source of local knowledge. As a loyal and hardworking member of Dore and Totley United Reformed Church, Jim came into contact with Transport 17, as he helped at the lunch club, becoming familiar with the service they provided.

Despite the very damp and murky weather, it was lovely to see so many families and local residents at the Bradway Fun Day recently. We may have also seen some of you the following weekend at Totley Show. What a difference a week can make, with the weather bright and sunny in Totley. We have been supported by volunteers from Sky Sheffield at both events, as well as at the Spring Fayre in Dore earlier this year. Sky Sheffield encourage their employees to volunteer locally by allowing them to use 15 hours of company time in each 12-month period to choose an organisation or event to support. We have benefited both from their ideas and practical help and are appreciative of their ongoing support, as well as the support the local community provides us. As a charitable organisation, we wouldn't be able to continue functioning without you.

A special mention must go to one of our longer-standing regular Tuesday passengers, and her fellow bus and lunch club companions. Over the last year June, with help from her friends, has raised over £1000 for Transport 17 by holding raffles. An amazing effort and funds most gratefully received, thank you.

£1000 could fund:

- **Six** volunteer minibus drivers to attend their **MiDAS training course** (Minibus Driver's Safety Awareness). It is essential they complete this before driving a minibus for Transport 17. Or,
- The 10-weekly statutory safety inspections for **ALL three minibuses** for the next **10 months**, or
- **14 new tyres** for our minibuses, or
- **2.5% of the cost** of purchasing a 5-year old second-hand fully accessible Peugeot Boxer minibus!

New Minibus and Fundraising

As we mentioned in the last edition of Dore to Door, time has come for us to replace at least one of our buses. With our current minibuses ranging in age from eight to nineteen, increased and more frequent spending on repairs, and an ongoing increase in demand for the accessible transport service we provide, it is essential we have modern and reliable buses.

Many of you will know that for small charities and causes, accessing funding can be a challenge. Funding is often restricted, inflexible and the process of applying can require a lot of effort. To help with raising funds to pay for the new bus, Transport 17 has registered with easyfundraising. This means you can raise FREE donations for us every time you shop online. Over 7,000 brands will donate to us when you use easyfundraising to shop with them – at no extra cost to yourself! These donations really mount up and make a BIG difference to us, so we'd really appreciate it if you could take a moment to sign up and support us. It's completely FREE and only takes a moment. Click the link, sign up and add the reminder to your browser on your phone or computer, and you'll be collecting for us before you know it. Thank you so much.



You can find our easyfundraising page by scanning the QR code where further details will be explained.

Today, with an estimated 15,000 adults living within the S17 postcode, we reckon if every adult contributed £2.50, we would be within touching distance of the £40,000 needed to purchase a low mileage second hand minibus, fully converted to make it accessible (for example, with a tail lift). What easier way to contribute to this fund than getting retailers to donate for you!

Christmas Fayre

We look forward to seeing you at our Christmas Fayre this year on Saturday 30th November, 10am – 12.30pm. The Cross Scythes pub, Baslow Rd, has kindly agreed to host us again this year. We will be including the established favourites such as the Christmas 'Bottle Bonanza' where every ticket wins a prize, a Christmas raffle with a variety of prizes, as well as artisan stalls from local craftspeople and artists. Come along and join us for a cuppa, mince pie, and maybe find one or two Christmas presents for friends and family.

As always, we can be contacted on 0114 236 2962, by email at admin@transport17.co.uk, or via our Facebook page – Transport17Ltd.

S17 - Community Calendar

Having spoken to several community groups within S17, many of whom rely on the generous support of the local residents to continue functioning, the idea of having a community calendar was mooted. There were some thoughts that there had previously been one prior to Covid that had been held at Totley Library but that it was no longer in existence? It is hoped that one of the main benefits of having such a calendar would be that groups would be able to schedule events, particularly fundraising events, so they were not clashing.

The calendar we are proposing setting up would be online using Google Calendar and called Dore, Totley and Bradway Community Calendar. If you are part of a group within the S17 community that meets regularly and would like to add events / have access to such a calendar, please contact Emma Knight at admin@transport17.co.uk, or by phone on 0114 236 2962. Let's help S17 stay connected.

Fiona Smith

In the Beginning... the Founding of the Dore Village Society

17th September 2024 marked the 60th anniversary of the formation of the Dore Village Society. Here is what Michael Bassey, the first secretary to the DVS, wrote about its formation.



Rose & Ivy cottages in 1964. Devonshire Arms on the right, the only building in the photo which remains today.

In the 1960s a small group of Dore friends (Betty and Julian young, Hazel and Sid Hoffman, Margaret and Alan Kilner, Joan and Michael Bassey) met every six weeks or so, in each other's houses, as a discussion group, each in turn choosing a topic and leading the conversation. One evening in the early summer of 1964 Michael opened a discussion about the state of Dore, of the demolition of old cottages, and of traffic problems. It was decided to call a public meeting and, on 17th September 1964, at a crowded event in the Church Hall, the Dore Village Society came into being. A committee was formed with Sid Hoffman chairman, Michael Bassey secretary, Mrs M O Howes treasurer.

The invitation 'to be a founder member' proposed the aim as 'to preserve and enhance those features and amenities which are of value to the community of Dore, and to encourage developments which will improve them.'

It was conceived as a conservation society. By November nearly 200 people had become members, with a subscription each of half-a-crown (a coin of denomination 2s6d, equivalent to 12½p today).

Newsletters were distributed to the membership reporting on Committee activities. These were typed on Roneo stencils and illustrated with my line drawings.

Later newsletters carried sketches of Rose and Ivy cottages (next door to the Devonshire Arms and demolished in 1967, notwithstanding protestations from the society) and the Old School (now the Society's centre – as campaigned for in 1965).

From the start the Committee was active. As secretary I reported to the first AGM (in September 1965): "Your committee has met on 15 occasions

for a total of 40 hours: has exchanged 70 letters with Sheffield Town Hall and various property owners, and issued 4 newsletters to members." Major achievements were listed as: a development plan for the centre of the village; a 'Doomsday' survey of Dore footpaths classifying them as good, fair or poor; a plan for a cultural and social Village centre in the Old School – which had just become vacant on the opening of the new school; and the setting up of a Historical Group. I said that the Committee's view was that "new buildings are inevitable, traffic is inevitable, but can we keep some of the charm of the old Village and create new dignity in the neighbourhood?"

The Committee elected at the 1965 AGM was: S Hoffman (chair), M Bassey (secretary), Mrs M O Howes (treasurer), WH Beynon, W S Brown, A Johnson, Mrs M M Stennett, and Mrs D Whiteley. Over the next few years it made representations to the appropriate authorities on traffic problems, car parking, roadside footpath maintenance, footways that should

be widened to take prams, development of greens, tree planting, as well as attempts (rarely successful) to prevent the demolition of old millstone grit cottages.

One significant success was erecting, in July 1968, the memorial stone on the Village Green which commemorates the event of 829 AD – as recorded in the Anglo-Saxon Chronicle – when King Eanred of Northumbria 'did submission' to King Ecgbert of Wessex at Dore. Hazel and Sid Hoffman were the driving force as I recall."

Here is an extract from the first DVS newsletter published on 1st November 1964 (Dore to Door didn't come into being until March 1986).

"Approaching 200 people have joined the Society.



The Hare & Hounds before the attached shops were demolished, and Jester's Cottage when it was still a shop. The cottage which stood in the foreground had only just been pulled down in 1964, and is now the outdoor seating area.

- *New residential buildings: we believe that in general it is unrealistic to oppose the building of new houses and flats. People have to live somewhere, and filling up the gaps in residential areas saves the countryside. But we intend to make strong representatives to the effect that new developments should be in keeping with their surroundings, and appropriately landscaped with trees lawns, etc.*
- *Congestion in the High Street: we believe that any widening of the High Street would spoil the character of the Village. In order to reduce the dangers of the High Street, we propose, as an immediate expedient, that a one-way traffic system be introduced in the High Street and part of Townhead Road. In this scheme Devonshire Terrace Road would remain a*

two-way road and the bus-stop would remain in its present position.

- *Contact with Sheffield planning authority: Councillor Lambert has arranged for the Chairman and Secretary to visit the City Engineer next Tuesday: it is hoped to establish friendly relations through which the suggestions and ideas of the Society can be adequately presented."*

There are many more examples in subsequent editions of the newsletter and Dore to Door that will be familiar to residents today. All issues of Dore to Door are on our website: go to our home page (www.dorevillage.co.uk) scroll down and click the image labelled "Dore to Door".

Keith Shaw / Photos by Mike Bassey

A Look Back at 1964

1964 was a pivotal year in British history, a time of significant social and political upheaval. The post-war era norms of deference and conformity were being challenged by what became known as the swinging 60s counterculture and by the emergence of the hippie movement. Both of these were seen by the establishment as dangerous aberrations but nothing could hold back the tide of change. Nowhere was this more apparent than in the radical changes in fashion, the pressure for greater social equality, a greater willingness to question the status quo and, of course, the music of the time. A more open and cosmopolitan society was emerging. At the same time the Civil Rights movement was growing in the USA, and large-scale protests against the Vietnam War were emerging in many countries. The resultant cultural changes were profound and have had a lasting impact through to the present day.

I was seventeen in 1964 and remember listening to pirate radio stations in my bedroom. A year later, I was a student living on the King's Road in Chelsea - right in the heart of the swinging 60s - growing my hair long and wearing a green headband. Later, I got married in an orange and yellow paisley shirt and flared trousers, and to this day some part of me remains a hippie and a non-conformist.

Keith Shaw



Flared trousers, bright patterns and of course... miniskirts!



A year earlier, Martin Luther King Jr. shared his dream with the world. In 1964 the US Civil Rights Act was passed, prohibiting racial segregation and discrimination - a major step in the fight for equal rights.



The first major protests against the Vietnam war began in 1964 at the University of Michigan.



A Hard Day's Night came out in June and took the world by storm.



Top of the Pops premiered - its first features were Dusty Springfield, The Rolling Stones, The Dave Clark Five, The Hollies and The Beatles.



ACTION TUTORING

Year 6 English workbook
Pupil workbook

Volunteer tutors needed!

With just one hour a week, **you can support a young person to achieve in maths or English.** Action Tutoring is looking for volunteers to tutor in a Sheffield school or online. We are particularly looking for volunteers who are available to tutor English at **King Egbert School** for an hour on Monday afternoons.

You'll be supporting them to build their confidence and help ensure they leave school with the grades needed to get off to **a great start in life.**

We'll provide you with training, resources and in-session support!



Sign up:
actiontutoring.org.uk

JPR Farm Direct Ltd
Delivering Quality Garden Products

Screened Topsoil

JPR Gold-Soil Conditioner

Matured Farmyard Manure

Ornamental Barks & Play Chips

JPR Border Mix-for beds and borders

www.jprfarmdirect.co.uk

Tel: 01298 873022



ELLIS WILLIS & BECKETT
Auctioneers & Valuers

Ellis Willis & Beckett can trace its roots back to 1870 and is a well-known name in Sheffield and the north of England. We hold monthly antique and collectible, specialist and quarterly fine art auctions. Including country and fine furniture, ceramics, paintings, toys, jewellery, watches and everything in between.

- Free Valuations & Home Visits
- Inheritance / Probate Valuations
- Deceased Estates & House Clearance Services
- Low Commission Rates For Vendors & Buyers

www.ewbauctions.com

☎ 01142 796959

Totley Library Anniversary

Totley Library has spent much of 2024 celebrating 10 years since our volunteers took over the running of the library from the council. In 2024, sixteen Sheffield libraries were due to be closed due to lack of council funding. Protest groups were set up and members of these groups went on to run the libraries. The council offered support in the way of training and systems management, and, despite some nervousness and apprehension, all these libraries have continued to be a success. To celebrate 10 years of volunteer libraries in Sheffield there's a 15 minute video describing how the libraries have developed. Greenhill produced the video on behalf of the group of libraries. Search YouTube for the video "**Ten years of volunteer-run libraries in Sheffield**".

Over this time at Totley Library we have built an accessible toilet and replaced the kitchen and heating, upgraded the book stock, re-painted, purchased new computers, carpet and furniture, and landscaped the external approach to the library.

Most of the libraries now offer "Books and much more"; they have developed into community hubs where all sorts of activities take place to support their communities, and we thank our community for supporting our events. Recently the folk night was a great success, and the book and jigsaw sales also went well, raising significant funds. We have had some funding from the council recently to help us to do some vital roof repairs. Our Christmas event is always popular and will be held on November 24 this year; we will be combining it with a further celebration of our 10 years together. Tickets will go on sale in early November.

All the information about our events is on the website (www.totleycric.org.uk) and as always all are very welcome. Here are a few to be getting on with.

Totley Library Community Art Space: free space for local artists to display work

Totley Library Community Art Space was established to show-case the work of new and established local artists. All art works are exhibited for a period of three to six months free of charge and are available for sale at a price set by the artists. Totley Library takes a small commission on each picture sold to support the ongoing running costs of the library.

The library is now looking for other local artists who would like to join this exciting community initiative and who would like to exhibit on January 25 and April 25. For further information, please call in at Totley Library and take a look at the Art Space or email carolynjallcroft@gmail.com.

Original Art, Prints and Photographs for Sale

Art works by local artists Keith Turton, Kath Horner, Francisca Veliz and Gina Hodges are currently on display and available for sale at very competitive prices. Come and have a look, we may have just what you are looking for to brighten up a wall or to give as a unique gift.

Play Totley Library Lottery: win cash prizes and help keep Totley Library open for another ten years

Totley Library has been run by volunteers since Sept 2014. Your support has been invaluable in enabling us to expand our facilities. Running the library costs approximately £28,000 a year to run. We receive an annual grant of about £16,000 from the Sheffield City Council but the rest comes from fund raising. This is where you can help by playing our lottery and, if your luck's in, win a cash prize. 25% of our lottery income is allocated as the prize fund. The remaining 75% goes into library funds to support the ongoing running of the library.

Lottery tickets cost £1 per month for one number. For just £12 a year you will be entered into our monthly prize draw. The more people who join our lottery, and the more tickets you buy, the bigger the prizes. Currently we are paying out more than £100 a month for first prize. To enter, please collect further information and an application form from Totley Library front desk.

Julie Kitlowski

Review of Summer 2024

As Autumn beckons and puts paid to our outdoor practical ventures until next year, we are looking forward to our usual Autumn programme of events. But what have we been doing in Dore and beyond?

The test pits conducted at three sites around Dore yielded the sort of finds we have come to expect. We found Victorian pottery, clay pipe fragments, industrial slag, a lot of rusty nails,



and evidence of the geology of the underlying strata of Dore – much especially at one site - of the thin coal shale, which is associated with the better, thicker coal seams which were worked by the several coal mines in the village.

What we really wanted to find was a hoard of, maybe coins, or other treasure! However, The Time Travellers were presented with a hoard

of sorts by a very generous benefactor who donated a collection to us of Roman nails. The Roman nails are part of a discovery made in 1961 at Inchtuthill in Perthshire. When the Roman military camp of Pinnata Castra was abandoned in 87AD the departing troops were unable to take with them one million nails weighing more than ten tonnes. To avoid the precious iron metal falling into Caledonian hands and being turned into weapons the troops buried all the nails four metres down and covered the pit up to avoid discovery. And here are some of them!

The annual trip this year was to the Shrewsbury area and although the weather wasn't ideal, we visited some extraordinary places. Following on our 'nails' theme we started the trip at Roman Wroxeter (The fort by the Wrekin). Wroxeter (or Viriconium Cornociorum)



featured in a TV series following the exploits of four modern builders to recreate a typical Roman villa – not always without issues! Perhaps they needed some of the genuine nails.

The Shrewsbury area is famous for black and white half-timbered buildings, priories and abbeys. Much too many to expand upon but well worth a visit. It's an area steeped in history as shown when you turn a corner and there is William the Conqueror's cousin, and then the tomb which was the inspiration for the Cadfael stories by Ellis Peters.

A benign looking chap, Robert de Montgomery was the First Earl of Shrewsbury and founded Shrewsbury Abbey. We can excuse him being minus a nose since he died in 1094 AD. Was he present at the Battle of Hastings in 1066? Depending on which historical source is to be trusted some say he commanded the Norman right flank at Hastings and some say he remained in Normandy to govern in William's absence. And his story is only one of many we encountered!

So if you want to join in with us this Autumn and Winter on our talks, walks and tours please look at the website for The Time Travellers: www.thetimetravellers.org.uk. You will be made very welcome.



Call our team on **0114 235 2727** to book your appointment



Looking for physiotherapy treatment but finding it difficult to leave your house due to your problem?

We offer physiotherapy in your home through our Activ Home service!

Chartered & State Registered Physiotherapists in Totley
Registered with all major insurance companies.
Post Operative Rehabilitation - Mobility Issues - Fall Recovery
Back & Neck Pain - Joint Problems - Acupuncture
In Clinic Appointments Available Too (see website or call us)



E: hellototley@activphysiotherapy.co.uk
W: www.activphysiotherapy.co.uk
A: 88, Baslow Road, Totley, Sheffield, S17 4DQ



We travel to S18, S17, S8 & S7 postcodes

Marriott Plumbing & Heating Ltd

Gas Safe Registered 204606

Fully qualified maintenance and installation specialist with 25 years of experience.

- *Boiler repairs and installation.
- *Pilot light failures.
- *Central heating breakdowns.
- *Emergency call outs.
- *Boiler servicing and powerflushing.
- *Landlord certificates.
- *Bathroom suits and wet rooms

No job is too small



**please contact: 07976 031853 or
nicholasrichards93@yahoo.co.uk
11 Mercia Drive, Dore, S17 3QF**



HAMNETT

WEALTH MANAGEMENT



**Pension
TRANSFER**
Gold Standard

Helping you achieve your financial goals

Providing unbiased, reliable and trusted personal, financial and investment advice since 1989.

Hamnett Wealth Management have been helping residents in Dore achieve their financial goals for over 30 years. We pride ourselves on being trusted advisors, and have built long-lasting relationships which ensure our clients benefit from professional financial advice.

We offer initial consultations at no cost or obligation.

If you need advice on pensions, getting more from your savings or inheritance tax planning, consider getting in touch to find out how to make your money work harder for you.

Get in touch for a confidential chat

- 📍 160 Baslow Road, Totley, Sheffield, S17 4DR
- ☎ 0114 235 3500
- ✉ advice@hamnettwealth.com
- 🌐 www.hamnettwealth.com



Hamnett Wealth Management are authorised and regulated by the Financial Conduct Authority

A Green Infrastructure Strategy (GIS) for Dore

Dore remains one of only two areas within Sheffield to have produced its own Neighbourhood Plan, a document which is now accepted by both Sheffield City Council and the Peak District National Park Authority as part of their wider development plans for their areas. While it was an achievement for Dore Village Society and the Dore Neighbourhood Plan Steering Group to reach that point, those of us closely involved felt limited by having only to see our neighbourhood through a developer's or a planner's eye. What would our vision be if we were looking with the eyes of an historian, of an environmentalist, of a farmer, of a rambler or even a poet's eye? This frustration flowed through into Annex A to the Neighbourhood Plan where we signalled a strong wish to take a wider view of our neighbourhood by producing a Green Infrastructure Strategy to better expose the value of the landscapes surrounding our lives in Dore.

Late last year the DVS commissioned GIST (the Green Infrastructure Strategy Team of David Crosby, Margaret Peart and myself) to draft a GIS looking at Dore's Green Belt from much wider perspectives than were possible within a Neighbourhood Plan. We discovered that within the planners' bible, the NPPF (the National Planning Policy Framework), there was firm encouragement for this broader view to be taken of land designated as Green Belt. At Para.150 it states that: "Once Green Belts have been defined, local planning authorities should plan positively to enhance their beneficial use, such as looking for opportunities to provide access; to provide opportunities for outdoor sport and recreation; to retain and enhance landscapes, visual amenity and biodiversity; or to improve damaged and derelict land." We have begun that task by producing a GIS for our Green Belt in the hope that it will inspire our Local Planning Authority, Sheffield City Council, working in partnership with all interested parties, to realise the vision.

It so happens that all the land positioned between the boundary of our National Park and the developed edge of Dore village has been designated as Green Belt. Our GIS will identify how land stretching out from Ryecroft Farm to Whirlow Bridge, then alongside the Limb Brook to Ringinglow, below Sheephill Road, to the north of Whitelaw Lane and of Shorts Lane, and finally north of the Old Hay Brook fulfils the definition for green infrastructure – "a network of multi-functional green and blue spaces and other natural features, urban and rural, which is capable of delivering a wide range of environmental, economic, health and wellbeing benefits for nature, climate, local and wider communities and prosperity."

While this land is quite properly designated Green Belt, GIST has examined it free from that designation and the limited planning purposes it has. Whatever constraints that the Green Belt designation imposes on the land and its use, we have been looking at more fundamental features of the land which should be determining how we view it and should cherish it, such as the basic observation that it constitutes the landscape setting of a National Park, our highest valued natural beauty designation. We have identified the landscape characteristics of the land we happen to call Green Belt, and the ecosystem benefits they provide to us and to wider Sheffield and beyond.

We have carefully explored and described the landscape characteristics of our Green Belt, first by reference to the scientifically produced landscape National Character Areas and to the Landscape Strategy document produced by the National Park, and then by taking into account the perceptions of people who have, or have had, a close relationship with this land. What is remarkable is that the entirety of our Green Belt is assessed as having similar landscape qualities as two of the Landscape Types identified in the National Park itself. Given that the land

in the National Park was designated for its high level of natural beauty, it is gratifying to find landscape experts asserting that many of the qualities of Park landscapes flow through into our Green Belt, which even more justifies it being called the Setting of a National Park. Recognising that landscapes are not only what a scientific expert asserts, but also the perceptions of people arising from their interactions over time with the land, we have devoted a chapter to those perceptions to try to reveal the sense of place as well as the physical features, including the perceptions of those who worked the land, those who walked the land and those who, like Ethel Haythornthwaite, fought to protect it.

Our Green Belt is framed in the west by part of the National Park's Natural Zone (that part of the Park of highest landscape value, including Houndkirk Moors), and then to the north and east by the Limb Valley flowing from Ringinglow to Ecclesall Woods and the Sheaf beyond and in the south-west by the Old Hay Brook. The Belt's greatest biodiversity assets are the wildlife corridors of the Limb and the Old Hay Brooks and the nationally and locally designated woodlands lining each, but most spectacularly along the Limb. There is scope for developing a central wildlife corridor from Ecclesall Woods across Limb Lane and on grass verges alongside the Hathersage Road. The connectivity of wildlife corridors is critical to improving biodiversity. The Wildlife Trust's joint Slow the Flow project on the Limb Valley catchment is proving that nature-friendly action can be taken to alleviate flash flooding by holding back the first water rushes using many natural-looking leaky dams and creating attenuation ponds at stages down the river valley, as at the Limb Lane Whirlow playing fields.

There are already strong access points and routes for walking, running and cycling from Dore to and through the Green Belt to the moors beyond. There are strong link points with the Sheffield Round Walk which reaches out from the south-west inner city to the National Park. Dore itself has a number of organised walking groups and a host of participants, volunteer organisers and even volunteer countryside litter-pickers. The urge to contribute to – and to defend – our immediate countryside has been recently demonstrated by the volunteer work groups clearing undergrowth, hedge-laying and drystone walling at the commemorative Haythornthwaite Wood opposite the Dore Moor Inn.

We believe that nature-improvement projects within our Green Belt, such as extending our existing woodlands, planting new ones and encouraging more damp grasslands with ponds, can play a strong part within a Nature Recovery Plan for South Yorkshire. The strategy demonstrates how Dore's Green Belt can provide even greater ecosystem services to our city – in carbon capture, clean water, nature-friendly flood alleviation schemes, great access to nature with community health benefits, an appropriate setting for our National Park and volunteer opportunities for wildlife and recreational projects.

Our draft Green Infrastructure Strategy is well advanced and may well be in its final stages with maps, diagrams and photos soon after the publication of this magazine. Anyone wishing to make a point about the project or to ask a question should feel free to contact me. In due course it will appear on the DVS website. It will not be fixed in concrete, because, ideally, it will be taken up and be improved by a partnership of interests in the land and our Council which can further develop projects and stances which we can all support.

Christopher Pennell

BROOK JOINERY AND PROPERTY MAINTENANCE

- Replacement misted glass units
- Guttering and roofline products, fascia & soffit replacement
- Roof repairs, replacement tiles and slates, flat roof repair
- Bay roofing repair/replacement
- All joinery works – internal/external frames and doors
- Most property repair done
- Handyman service

Help keep your local trades busy

Paul Brook

10 Kings Coppice, Dore, S17 3RZ

07899906484

brooky1@icloud.com

MWB

M. WOOLHOUSE BUILDERS LTD
THE COMPLETE BUILDING SERVICE

Established since 1985

- From Design to Completion
- Bespoke House Builders
- Bespoke Extension Specialist
- Stonework Specialist

T : 0114 235 3314
M: 07973 908 187



www.mwoolhousebuilders.com
info@mwoolhousebuilders.com

Expert audiology on your Dore-step

Local, Independent and Individual
Hearing Care serving the Hope Valley.

- > Comprehensive Hearing Tests
- > Hearing Aids (with 2 weeks free trial)
- > Effective Tinnitus Treatment
- > Professional Wax Treatment



Est.
2008

hearing therapy

High Trees Clinic, 37 Townhead Road, Dore, Sheffield, S17 3GD
0114 395 2039 || hearingtherapy.co.uk

The saga goes on into 2025!

Last time I advised that the car park should be fully open by the end of September. Wrong again! It wasn't and won't be before January. A new permanent access gate has been installed at that bottom corner and will be in constant use until the entire job is completed. Construction materials and equipment will be moving in and out until then. The four EV (electric vehicle) charging points should soon be available.

Restoration of the green areas around the car park is under discussion and could start in October. Friends have masses of daffodil bulbs ready to plant along Abbeydale Road and around the entrances once the spaces are clear. Our planters are restored by the platform entrance and at the south end of the old platform. We hope to have more at the north end next year. Abbeydale Rotary Club have offered to assist there.

Restoring the railway triangle, the hillside below Poynton Wood and the area in front of the West View Lane flats should have been well under way this autumn. Sadly, that work will not now be completed before January, probably continuing during the Festive Bank Holiday period. At the time of writing local residents have just been specifically advised of weekend work up to 16th/17th November. Why? One difficulty after another, the latest being machine failures over five weekends between August and early October. Final tidying up will now continue until the Spring.

Now some positivity

Despite all we've had to endure getting to where we are today the station has been transformed. I tend to see all the things that are wrong but the lovely thing I'm finding when on the platforms is that the majority of users say they love the station as it is now. I'm speaking to many people who are using it for the first time, and they aren't Dore to Door readers. It's more accessible than Sheffield for everyone with a shorter distance to walk after being dropped off. That particularly matters to anyone who is less mobile or with sight impairment. Yes, we need more parking but the number being dropped off and collected in 2019 came as a surprise to South Yorkshire Mayor Combined Authority's planners. That needs taking into account in future plans.

Come to Dore & Totley by train

Word is spreading that this is a nice place to start a walk. We are members of the High Peak and Hope Valley Community Rail Partnership. They're working to produce, and way mark, a new walking route from Sheffield station to Manchester Piccadilly station via Hope Valley line stations - the Steel Cotton Rail Trail. One of the easiest bits from Grindleford to Hathersage is now complete. During 2025 we hope to be involved in the city section down the Sheaf Valley to Midland station and over the tops and down Padley Gorge to Grindleford.

We can offer many other walking possibilities from our station including to our neighbours at Dronfield. The Sheffield Round Walk can be started here whether heading for Ringinglow or Norton Lees on the way to Endcliffe Park. Other round walks could go to any of Beauchief, Bradway, Holmesfield, Totley, Owler Bar, Dore, Ecclesall Woods or just the Industrial Hamlet and Millhouses Park.

When suggesting to friends that they should come here by train to start a walk why not start or finish with a drink or bite to eat? Visitors are spoilt for choice. The Summer House Restaurant is a very short walk down the car park. The Rajdhani Bangladeshi restaurant is in the station building itself. Name your favourite cafe, possibly Joni's on the Abbeydale Industrial Hamlet site. Lots more in Dore village, Totley, Bradway and down Abbeydale plus a wide selection of pubs that do good food.

Come to Dore & Totley station for sport. Three golf courses within a mile and a golf driving range. Beauchief was beside Abbeydale and Beauchief station. Dore & Totley was actually named after the station, important 120 years ago when many golfers came from the city by train and walked up to their clubhouses. Some still do. Of course, Abbeydale Sports Club must get a mention, the starting point for the cricketing careers of two recent England captains, but with so many facilities for a wide range of other sports.

We're also a point where visitors using Google maps, particularly from the Manchester area, may be advised to interchange with the 218 bus to Chatsworth or Bakewell. You may see them a little bemused looking for the bus stop – and still bemused that the buses alternate Bakewell via Chatsworth then Chatsworth via Bakewell, in theory! Get the first that comes and enjoy the ride, it's so often unreliable the next may never come.

The current station work will be finished before next summer, one day we'll get a new shelter with proper

seats on the Sheffield bound platform, even a toilet, more stopping trains – with more car parking. That's lots more battles to be fought!

Happy Christmas and a well-travelled New Year – by train.

If you're a Facebook user, you can find and join us by searching for FoDaTS. It's an active group with over 940 members and is updated frequently with topical information and comments.

Alternatively look for our website at www.fodats.net We hold bi-monthly committee meetings at Totley Library and are always happy to hear of new ideas. Please get in touch.

If you're not on Facebook and would like more information please email our Secretary; njbarnes@outlook.com or myself; chrismorgan4@btinternet.com

Chris Morgan
Chairman



Quality Windows & Doors in UPVC, Aluminium & Timber



MODGLASS ESTABLISHED 1968

Tel: 0114 2353 851 Email: info@modglass.co.uk www.modglass.co.uk

A.W. OTTER & SON

Tree & Garden Services

When you're looking for a reliable company with over 38yrs of experience look no further than

A.W. Otter & Son

For all your tree & garden work

With a friendly, professional service we offer.

- Tree felling
- Tree pruning
- Hedges, trimmed/reduced/removed
- Stump grinding
- All aspects of garden landscaping



Give us a call for
a no obligation quote

Richard Otter

07789740729/01142280404

Borgo Osteria Antico

My original plan was to review this new Italian restaurant when it first opened in June this year. However, due to a logistical error on my part I had to wait until this issue of Dore to Door to visit the fourth restaurant venture in the city for Giacinto Di-Mola and Vito Vernia (the others being **Paesani** in Crookes, and **Grazie** and **La**



Bottega, on Leopold Street).

Located on Oakbrook Road, the restaurant boasts an outside terrace (which would have been lovely in June!) and an upstairs cocktail bar as well as the ground-floor restaurant. The décor is suitably rustic, yet tasteful and gives one an immediate feeling of the comfort one would expect from

an Italian family osteria and an expectation that the food to come would match.

The staff were second to none, polite and attentive and almost exclusively native Italian. Our waiter served us with humour, which I took as a sign that he was enjoying his job. He was knowledgeable about the dishes and specials and topped up our wine glasses with clocklike regularity (Primitivo at £29/bottle) – which is always welcome.

Our visit was on a Sunday, so we had the option of the additional Sunday menu (£23 for 2 courses, £27.50 for 3), which includes Italian starts and traditional roast mains with a (slight) Italian twist – mainly just the nduja cauliflower cheese! However, we chose from the regular menu and while perusing we had some focaccia with oil and balsamic (£5.75) and garlicky olives (£4.50). I chose the Arancini Funghi e Zafferano (£9.50) which was (surprisingly for me) a vegan option, with wild mushrooms & saffron, vegan mozzarella & vegan saffron mayo. I would have loved to have reviewed this for you, but unfortunately it was off, and I had to change my choice to the Arrosticini (£11) – grilled lamb skewers from the Abruzzo region served with pesto dip and rocket. The lamb was succulent and tasty and the pesto dip with a hint of mint, was a perfect accompaniment. My partner chose the mussels from the specials board (£13.50). They were served in a lovely wine-based sauce with a hint of chilli and rustic bread. The mussels themselves were perfectly cooked and the sauce could have been served alone with a spoon!

Continuing with the specials (and fish) theme, my partner chose the grilled swordfish (£27), which came with a choice of salad or potatoes and a salsa of tomatoes, onions, and a range of edible flowers. To me, the swordfish steak was very, very slightly over-



cooked, although my partner totally disagreed and as she was the one eating it, it is hardly a complaint. I will say that it tasted fantastic and the salsa was gorgeous and provided a perfect piquancy alongside the

simply grilled fish. The traditional Italian side salad of radicchio, lettuce, tomato, rocket and a great Italian dressing was done an injustice by being called “side” as it totally held its own as a dish.

In a break from tradition (I usually go for something meaty), I chose the Gnocca di Mare (£18.50) – purple gnocchi with mussels, prawns, squid and cherry tomatoes in a white wine garlic sauce.

The gnocchi made with purple potatoes was an interestingly colourful addition to the dish, which was visually stunning. The seafood was all perfectly cooked and really well seasoned, the prawns were huge and juicy and the squid was not even slightly rubbery. Yet again, the sauce alone could have been served as a soup and I just wish I had ordered some bread to mop it up.

Just for the purposes of this article, you understand, we both chose desserts. On a recommendation from a friend, I chose the Baba Ubriaco (£8.50) – a Rum Baba with Chantilly cream & marinated cherries. It was quite simply the sweetest thing I have ever had, short of a desert spoon of syrup!. However, the sharpness of the cherries offset the sweetness (just) and together with the cream formed a great dessert (although I didn't need sugar in my coffee). My partner chose the Formaggi (£15.00) – a selection of three Italian cheeses, frozen grapes & crackers. This was another visual masterpiece, and the frozen grapes were a revelation with the Taleggio, Buratta and Pecorino and the home-made cracker bread.

We finished off with a cappuccino (£3.50), a double espresso (£3.00) and a Cointreau (£5.50) as we discussed returning. It is definitely a restaurant that will be added to my list of regulars and I am particularly looking forward to sitting on the terrace in the summer. At £160 including a 10% service charge it was really good value for money considering the overall experience – great service, great ambience and great food.

Hendo Nagasaki

Borgo Osteria Antico
139-141 Oakbrook
Rd,
Sheffield
S11 7EB

Tel: 0114 349 7637
Email: Info@
borgosheffield.
co.uk
Web: borgosheffield.
co.uk

Opening Hours:
Mon - Tues: Closed
Weds - Thurs: 4pm -
10pm
Fri - Sat: 12pm - 12am
(Kitchen closes at
10pm)
Sunday: 12pm - 8pm



More in Dore: Building a Community Playground at the Rec, Townhead Road

Clear Out and Give Back: Join Our Pre-Christmas Fundraiser

Join us 1.30-4.30pm on Sunday, December 1 at Dore Old School, Savage Lane, Dore S17 3GW for a special pre-Christmas fundraiser. We invite the community to clean out their toy and games cupboards, donating gently used items that can bring joy to others and raise money towards new swings at the Rec in 2025.

Bring your kids' activity equipment, board games, puzzles, and toys for all ages - everything from toddlers to teens! However, we kindly ask that you refrain from donating clothes and cuddly toys.

Donation Drop-Off Details:

When:

Friday, November 29

Saturday, November 30 - including cake donations

Sunday, December 1 - cake donations only

Where: Dore Old School collection bins located to the side or pass to a volunteer inside (use main front entrance).

Can't make it during those times? No problem! You can coordinate a drop-off by calling or texting 07957 462533. Please also call or text to volunteer help.

Let's come together to support our community while spreading Christmas cheer. Clear out your cupboards, find some treasures, and help us make this Christmas special for everyone! With Christmas themed activities for the kids incl. face painting and hot/cold drinks and cakes for all, it's worth a note in your diary. As with the table top event in March, which raised over £3000, entry is free - simply donate what you feel on exit for the items you select (cash or card payments).

Special thanks to Dore Methodist Tuesday Group!

We extend our heartfelt gratitude to the Dore Methodist Tuesday Group for their incredible fundraising efforts this year. By nominating More in Dore as their charity, they have raised an impressive £633.33 towards new playground equipment, which accounts for approximately one-fifth of the total cost for our upcoming Agility Trail.

This low-level Agility Trail will be especially beneficial for children under five, promoting imaginative play and creativity while providing precious moments for parents to bond with their little ones. Additionally, plans for extra seating are in the works, ensuring a comfortable space for families to relax and enjoy the outdoors.

Thank you, Dore Methodist Tuesday Group, for your support and commitment to enhancing our community playground! Your efforts are paving the way for a fun, engaging space that will be cherished by families for years to come.

Further thanks are given to those who have donated via the QR code or by cheque, and to:

267th Scouts, Dore - for the loan of big games for the Dore Show raising over £200.

The Village Greens - weekly fruit and veg boxes accrue 3% (donation of profit) towards the playground.

Paper Moon - welcome Vicky and thank you.

Dore Village Society* for continued support through their local community events, including the donation of £600 raised at September's Dore Show.

How to donate

Online scan the QR code

By cheque payable to 'More in Dore' to Dore Village Society Office, Dore Old School, Savage Lane, Dore S17 3GW.

Thank you

Team More in Dore

Dorerec@gmail.com

<https://www.facebook.com/dorerec/>



**More in Dore is a subcommittee of Dore Village Society registered charity number 1017051. The wooden play equipment installed at the Rec, Townhead Road, Dore S17 3GE in 1998 has reached the end of its life. Public funding for new playground equipment has been limited for over 20 years. New playground equipment relies on community fundraising.*

Julia Watkinson

Where is this?

This is an easy one and the answer is: ///ally.gains.almost

Readers familiar with what3words will recognise this as a location reference and know how to find it. For those unfamiliar with what3words, this is an amazing free app which you can download to your phone and computer via Google.

Each 3sq.metres of the Earth's surface has been allocated a different three-word name as a unique identifier that identifies its position in an instant. It's so powerful that it has been adopted by the emergency services to identify the location of anyone needing help.

For example if you run into trouble half way across the Atlantic, you can send out a what3words such as ///homebuyers.digitals. avid and rescuers will be able to find you.



what3words has many other applications, for example you can find out where you are if you are lost, you can tell people where you want something left for later collection, you can use it to arrange a meeting place, and for a myriad of other purposes.

MARTYN FOSTER ELECTRICAL

We provide a wide range of high quality electrical services and pride ourselves in our reliable, diligent, clean & tidy approach

- 24hour Call outs
- Re-wire specialists
- Upgrades
- New consumer units
- Smoke detectors
- Security alarms
- Phone/Internet points
- Door entry systems
- Heating controls
- Fault finding
- Inspection & testing
- Maintenance

All work certified, insured & guaranteed

Please call us to discuss your requirements

MFE DOMESTIC INSTALLER **0114 258 9201**
info@martynfosterelectrical.co.uk



Department
for Environment
Food & Rural Affairs



PEAK
DISTRICT
NATIONAL
PARK

Farming in Protected Landscapes programme

Farming in Protected Landscapes

Ever thought about where your taxes are spent other than the NHS, schools etc?

Farming in Protected Landscapes is a Defra funded programme for farmers and land managers designed to deliver benefits for Climate (including flood control), Nature, People (access and volunteering) and Place (landscape, cultural heritage and sustainable businesses). It has been running since 2021 and when the programme ends in March 2025 it is expected that over £5.5 million will have been spent on projects in the wider Peak District. This includes a significant proportion in or close to south-west Sheffield.

On the outskirts of Holmesfield a field barn has been restored. The barn was derelict but now is weatherproof with a new roof and door. This is of value to the local landscape and as a historical record of past farming activity and barn architecture in the area. The barn still includes the original hay racks. It is also of value for the barn owls and little owls both of which have nested in the barn and which now have a secure future. Barn owls are a protected species, so alternative boxes were provided for them in local woodlands during the restoration works and a new box has been put inside the restored barn together with an owl-sized hole in the door.

Local moorlands have been enhanced through support for cattle handling equipment, removal of sheep in the winter and small-



scale cutting of purple moor-grass alongside planting sphagnum. These activities are designed to enable best practice grazing and diversify the habitats and species found on the moor so delivering for both the Climate and Nature themes. Support has also been provided for hay meadow management.

Support for educational visits, upgrading access points on permissive rights of way and installing infrastructure to facilitate regenerative farming is underway at Whirlow Hall farm whilst replacing stiles with gates and upgrading the footpath surface has enabled enhanced access to Gill field woods. At the latter



a woodland survey has also been supported to provide better understanding of the woodland and encourage further volunteer-led survey.

As well as the core environmental objectives, FiPL aims to support nature-friendly sustainable businesses. Why not try the organic milk vending machine at Hassop Home Farm — Simply Milk Organic (hassopsimplymilk.com) or buy some moorland meat from (20+) Facebook? Both of these businesses have been supported through FiPL.

Rebekah Newman
Lead Adviser, Farming in Protected Landscapes



- Windows
- Doors
- Porches
- Replacement Units
- Composite Doors
- Bi-Fold Doors
- Conservatories
- Roofline
- UPVC Specialists







25 Years Experience

0114 236 9031

07729 174080

member 
FENSA registered
www.windowspec.com

84 Bushey Wood Road, Sheffield, S17 3QB



Tristan Swain

Garden Services and Maintenance
Established 1984

Unit C4 Sheaf Bank Business Park
Prospect Road Heeley
Sheffield S2 3EN
Tel/Fax: 0114 255 4689
Mobile: 07831 802 539
Email: tristan@tristanswain.co.uk




www.tristanswain.co.uk Public Liability Insurance Waste Transfer Licence

Vets4Pets Millhouses

Ask us about...
our affordable
health plans
for your pet

Everything you need to keep
your pet healthy and happy

- 15 minute consultations • Friendly, pet loving team
- Modern medical and surgical facilities
- Free on-site parking



The surgery is locally
owned by Vets
Tim Wood BVMS MRCVS and
Alistair Boyd BVMS MRCVS

Vets4Pets Sheffield Millhouses
964 Abbeydale Road, Sheffield, S7 2QF

Call: 0114 236 4070
or visit: vets4pets.com/millhouses

Opening Times: Mon - Fri - 8:30am - 7pm, Sat - 9am - 5pm



Horizon Electrical

Faults, Rewires, Sockets, Lights,
Cooker Points, Electrical Showers,
Phone Points, Security Lights

No job too small
Fully qualified with friendly advice

Ring Totley 236 4364 or
mobile 07772 483154

Chiropodist

Jennifer Downing, S.R.N.
Qualified Chiropodist
M.S.S.Ch. M.B.Ch.A.

Surgery behind Dore Chemist
Townhead Road

Tel: 0114 236 2048
24 hour answering service



GWS

Technology Solutions



PC Problems, Repairs, Servicing, Setup No Job Too Small
Wireless & Internet Setup Apple Macs Data Transfer
New PCs, Laptops, Upgrades Tuition Safe PC Disposal
Tablets, iPads, iPhone, Setup & Tuition Smart TV, Media box
Wireless/Airprint printers Wireless/ Internet boosters

**** For All Your PC & Technology Needs ****

Guy Senior

Phone: 0114 2352662 Mobile: 07890030453

Email: guy@gwstech.co.uk

Web: www.gwstech.co.uk

GWS, 5 Conalan Avenue, Bradway, Sheffield S17 4PG

Autumn and winter tidies.
Regular garden maintenance.
Hedge cutting.
Tree surgery.

0114 258 9290
james@jabird.co.uk
www.jabird.co.uk

1-5 Butttermere Road
Sheffield S7 2AX

JA
BIRD
LAND
SCAPES LTD

Hinchcliffe Decorators

Where Quality Work Comes as Standard

- Professional, reliable service
- Interior, Exterior work
- Commercial work undertaken
- Fully Insured, locally based
- Family run business

Specialists in all types of decoration

Contact Ian on:-

0114 262 0584 or 07977 956979

www.hinchcliffedecorators.co.uk

Peak Hearing

INDEPENDENT HEARING AID
ADVICE, SALES, REPAIR
and AFTERCARE

iPhone Compatible Hearing Aid Specialist.

Qualified and fully insured Micro-suction
ear wax removal service.

Home visit service available.

The very latest technology with a 5 year warranty.

Ring Ian on 01246-433955

8 High Street, Eckington S21 4DN

From Blackfriars to Christ Church Dore



Martin Blower is a man who retired just at the right time for the redevelopment project at Christ Church in Dore. You may be aware that the church building is nearly 200 years old and was in need of repair and development to bring it up to the standard expected of public buildings in the 21st Century. The plans were drawn up, the planning permission and the Faculty (Church of England legal permission) were obtained. The fundraising was proceeding, and the church was reaching the point where they could be confident of having sufficient funds. A person to manage the project through to completion was required. It was 2023, at the time that Martin was elected a churchwarden and had recently retired, giving him the luxury of time for himself. Becoming a churchwarden, he gained

an overview of the needs of the church and the redevelopment project. Then when the vicar, Andy Patrick, found out about his skills he asked him to take on the project management role.

Martin saw this as a way to give something back to the church he had been part of since his baptism there 20 years ago. He could never have volunteered in this way whilst working. A civil engineer by training, he was the managing director of a company which dug very large holes for foundations on complex, large value projects, mainly in London. These included railway stations, roads and tall buildings. The project management skills required for these major projects were transferable to the much smaller project for Christ Church. Conceived over 25 years ago, this project has been through many hands, vicars, architects and Parochial Church Councils (PCCs). Martin sees his role as picking up the plans and making them reality. Reporting to the PCC, he acts as a coordinator of a team of vicar, architect, quantity surveyor and contractor. He regularly liaises with the contractor on design issues and progress.

I asked Martin why he agreed to do this; a significant job taking up 2-3 days of every week. He felt it was the right time to give back to the church and the community of which he had become part. He spoke about the vision that he shares with other members of the church. The church is on the way to becoming a warm, inviting, well lit, comfortable, accessible and flexible space, inherently different from the Christ Church Community Centre. People of Dore have worshipped and come together for life events for hundreds of years, going back to the time of the old chapel of ease which predated the present church. There is a beauty and a peace in that place and it will lend itself to many different types of events, as well as services. It will celebrate the unique heritage of Dore along with

present day culture in exhibitions for all to see. It is designed as a space for all and will be open every day of the year.

I was interested to know what the challenges along the way have been. Once the fundraising effort was over in 2023, the building gave the team surprises around every corner. Reasonable assumptions had been made in the planning stage, based on five-yearly inspections by an architect. But once you start opening and uncovering an old building problems become apparent. Firstly, the asbestos was more extensive than the first survey suggested. Then it was found that the chancel floor was degraded and could not have a new floor put on top. It had to be fully replaced. The West wall was always known to be poorly built, but it was a surprise to find that the choir vestry and porch were not actually attached to the main building. No surprise then that there had been water ingress. Further water ingress in the Bell Tower was found during tests of its structural integrity, with woodworm and death watch beetle infestation also present. These and other issues have led to the project taking more time and costing more money. However, it is a blessing they have been found at this stage before it became too expensive to renovate.

The project is now around 50% complete, with completion expected at the end of March 2025 so people can celebrate Easter, the most important time in the Christian calendar, in the church building. Martin says that passers-by will begin to see things happening on the outside of the building now. Up to this point, most work has been done in the interior. The next few months will see a large hole knocked through the West wall to start to fashion the new entrance and the work on the Bell Tower will start. There has been archaeological oversight of the work both inside and outside the building and while this continues nothing of interest has been found. People have asked me if there are to be tours of the building



before it is finished and I put this to Martin. Yes, it is on his agenda, but the floor, including the underfloor heating, is only just being finished now. It may be possible to arrange a limited number of visits early in the New Year.

After speaking with Martin, I reflected on how much more the project would have cost had we not had the army of skilled volunteers within the congregation to work numerous hours on planning, fundraising and now project management. I'm in no doubt that thanks will be due to everyone involved when we get to the finish line.

Anita Campbell

A graphic advertisement for G9 Design Chartered Architects. The logo features a stylized 'G9' in green and purple, with 'DESIGN' and 'CHARTERED ARCHITECTS' written below it. To the right, a star is positioned above the text: "Wishing everyone the very best for Christmas and the New Year!". At the bottom, contact information is provided: "T: (01433) 651 335" and "E: info@g9design.com". There are also logos for "ARB" (Architects Registration Board) and "RIBA" (Royal Institute of British Architects), and a QR code in the bottom right corner.



DORE CHIROPRACTIC

REBECCA MERIFIELD DC, MCHIRO

Whether you are recovering from an injury or surgery, are in pain or simply wanting to be a better you, my goal is to help you reach a state of physical, mental and social wellbeing.



HANDS ON TREATMENT FOR:

- Back, neck & joint pain
- General aches & pains from joints
- Headache caused by neck problems
- Prevention of migraine
- Sporting aches & pains
- Elbow pain from back & neck issues
- Shoulder pain from back & neck issues

MORE INFORMATION

07899536189

www.dorechiropractic.co.uk

info@dorechiropractic.co.uk

25 Heather Lea Avenue, S17 3DJ

Love to dance?



Want to have fun?

Our 'On Broadway'® Dance Fitness classes are perfect for women just like YOU who love to dance, have fun and want to reveal their inner showgirls!

Do something you love as a way of keeping fit, meet new people and have some quality you time!

TRIAL CLASSES every 4 weeks - book here:
www.katyrobinsonfitnessfusion.co.uk/select-your-location/

Where to find us: On Broadway® Dance Fitness Studio, 861a Ecclesall Road, Sheffield, S11 8TH
 (located in precinct just up from Greystones Road, opposite Wildcard Bar & Grill, opposite Once upon a Time Nursery)

Classes available Mon - Sat mornings, afternoons & evenings
 Classes also available in Bakewell, Chesterfield and Online Live.

PLACES ARE LIMITED SO PLEASE BOOK EARLY
info@katyrobinsonfitnessfusion.co.uk
 07803 906114
www.katyrobinsonfitnessfusion.co.uk




S17 DECORATORS

PAINTING & WALLPAPERING



TRUSTED LOCAL RESIDENT WITH REFERENCES. FULLY INSURED. HIGH QUALITY PAINTING AND DECORATING ACROSS SHEFFIELD AND NORTH DERBYSHIRE.

★★★★★

"THANKS FOR ALWAYS GIVING US SUCH A PROFESSIONAL FINISH WHEN YOU DECORATE FOR US."
 MRS M. (MILLHOUSES)

"THANK YOU FOR AN AMAZING JOB. WE KEEP RECOMMENDING YOU!"
 MR & MRS D. (BRADWAY)

"WE HAVE COME TO CONSIDER YOU AS A FRIEND"
 MR S. (DORE)

"YOUR DECORATING WORK IS SPOT ON - SO QUICK AND EFFICIENT TOO! WE RELY ON YOU NOW."
 MRS A. (DORE)

"YOU'VE DONE A MARVELLOUS JOB DECORATING THE OUTSIDE OF OUR HOUSE"
 MR & MRS W (DORE)

CALL JULIAN TODAY!


07905 523499 OR 0114 2369664

JULIANCROOKES@GMAIL.COM
 LONGFORD ROAD, BRADWAY, S17 4LP

FIND ME ON FACEBOOK 

Red Lion Garage

Your local, reliable garage for over 25 years



Yesterday's Values... Today's Technology

TavernGarageGroup
 Red Lion Garage
 32 - 36 Broadfield Road, Sheffield, S8 0XJ

AA

To book a service or MOT call us on 0114 2551619 or you can book online at www.taverngaragegroup.co.uk



Despite indifferent weather and occasional rain showers the show was a success. Attendance was slightly higher than last year although we had fewer exhibits in some sections, due mostly to the weather affecting those categories requiring cultivation.

The raffle was a great success, achieving the highest ever income, as did the auction.

Rowan School donated the money their stall raised to this year's charity, More in Dore. Thank you to the Headteacher, staff and helpers.

The auction proceeds were also given to More in Dore, as were the proceeds from the Scouts' hook a duck, hoopla and treasure island stall, bringing the sum raised to nearly £700.

The success of the Show depends on the people who volunteer to help in planning the Show, setting up on the Friday, running the event, and dismantling and putting everything away afterwards. In total this is about 60 people. Thank you to all of you, without whom the Show could not take place.

My thanks also go to David Hayes for providing background music, public announcements, and of course, his sterling job when leading the auction! Also to Andy Donnelly for putting the programme together and Women's Print for organising its printing.

We are similarly grateful to the numerous village shops and businesses that advertised in the programme, donated raffle prizes or sponsored exhibits.

The Dore Show committee began the year with nine members, five of whom have now left after many years of involvement: Andy Pack, who retired as Dore Show chairman this year, and Ruth Darrall, Pat Ryan, Sue Severs and Hilary Harrison. Thank you all for your enthusiasm and tireless efforts over many years.

We welcomed two new committee members who joined recently, Colin and Sue Ross. Their experience in organising events will be very welcome.

We have had numerous complimentary comments and thanks from people who said how much they enjoyed the event, and how much they appreciated the effort that had gone into it. It's seeing how much pleasure this event brings to those who attend, those who exhibit,

and everyone who takes part that make the effort worthwhile and feel that the Show contributes to the spirit of community in Dore.

In order to ensure that the show continues we do need two or three more committee members. The tasks with which we need help are not onerous or very time consuming but every bit of help reduces the load on the other committee members. Planning for the show starts in March and we meet in the Old School at 7pm about once a month until August, so six meetings in total, each one lasting about two hours. If you would like to consider volunteering please contact me on keith.shaw@dorevillage.co.uk or on 07778 422 910.

The Dore Show 2025 will be held on Saturday 13th September. See you there.

Keith Shaw
Chairman, Dore show Planning Committee

OPEN EVENING: THURS 28 NOV, 6-8PM

**BRAND NEW
STATE OF
THE ART
SIXTH FORM
CENTRE**



**KING ECBERT SCHOOL
SIXTH FORM**

TOTLEY BROOK ROAD, DORE, SHEFFIELD S17 3QU



25 SUBJECTS ON OFFER

62% A* - B

71% DISTINCTION - DISTINCTION*

87% ACCEPTED AT FIRST CHOICE UNIVERSITY

BUILDERS

PAGETS

MERCHANTS

SHEFFIELD'S INDEPENDENT FAMILY-OWNED BUILDERS MERCHANTS



OPEN TO TRADE AND PUBLIC MON to FRI 7:00am till 5:00pm | SAT 7:30am till 12:30pm

pagets.co.uk

sales@pagets.co.uk

0114 2923000 or 0114 2340485

94 Broadfield Road, Sheffield S8 0XL

Welcoming Space

As the daylight shortens and we move from Autumn into Winter, for some people the opportunity to get out of their home to socialise with others becomes more difficult. Also, there is an added problem for some with the increase in the cost of living and the rise in energy prices.

But we can offer some help – why not come to our Welcoming Space on a Wednesday morning from 10-30 to 13-00? You will be given a friendly welcome to our warm hall, where there is a constant supply of coffee, tea and biscuits together with the opportunity to sit and chat to others, catch up with some of the day's newspapers, play games such as dominos or quirkle, and also make new friends. Around mid-day we have a light lunch of hot soup and a bread roll. There is no set charge for this, but we appreciate donations towards our running costs!

Think this might be something for you or someone you know, but is getting to us a problem? We may be able to help as we use a Transport17 mini-bus and at the moment we have spaces available. So, we can pick up locally and return you to your home just after 13-00. We do have to make a specific charge for this service.

So, if this interests you, a relative, neighbour or friend please phone Jackie on 0114 235 1085 to see how we might be able to help.

Occasionally we also host a "Pop-up" information session, organised by the Local Area Committee's Community Development Worker, where there is lots of information available on Council Services and Cost of Living Support. The next information session will be on 20th November.

We gratefully acknowledge the continued support that we receive from members of the People Keeping Well in S17 Group, Sheffield City Council and AgeUK Sheffield.

Christmas Arrangements

We can now give details of our services over Christmas:

Our Carol Service will be on Sunday 22nd December at 10-30am. The service will include carols and readings and will be led by our Minister, Rev Jonathan Haigh. Come along and sing some of your favourite Christmas carols.

Christmas Eve Communion – working with friends from Christ Church we will hold a Christmas Eve Communion Service at 11-30pm on 24th December.

Christmas Day Worship – we will join with friends at Totley Rise Methodist Church (Baslow Road) for worship at 10-30am on Christmas Day.

Sunday 29th December – we will hold a joint service in our church with friends from Totley Rise Methodist Church. This service will be led by Rev David Willie and members of the congregation.

Everyone will be welcome at any of these Christmas Services.

Tuesday Ladies' Group

Another year of exciting speakers ahead, but first some really sad news.

At our Annual General Meeting on Tuesday September 10th, we remembered Janet Clitheroe who died recently after a lengthy battle with health problems. Janet was a long-standing and much loved member of our group. Having served on the organising committee for many years, she had retired in 2023. Janet will be much missed. Rest in peace Janet. God Bless.

We have some really interesting speakers lined up for the coming year which we are sure you will enjoy.

December 10th - Our Christmas celebrations are always fun and welcoming. This year there will be festive food and entertainment from "Penny Bun".

January 14th - The new year brings us a talk from our chosen charity. This will be decided at our next meeting in October.

February 11th - Don Witton will be entertaining us with an illustrated talk entitled "Once seen, never forgotten". Don is a retired schoolteacher who is now a nurseryman, lecturer and author.

We will once again be teaming up with the Salvation Army to help provide toys for children who would not otherwise receive Christmas presents this year. Our Christmas Toy Collection will be on Saturday 30th November when we will be serving coffee in the Church Hall between 10.00 and 12.00. New toys, books and games will be gratefully received. All gifts should be unwrapped.

If any ladies would like to join us, we are a very welcoming group. The Ladies group meets on the second Tuesday of the month at 2.30pm in our Hall. Visitors are welcome, charge £4.

Rosemary Memory Café

On the first and third Tuesday afternoon of each month, AgeUK Sheffield hold a memory café in our hall. This is an opportunity to socialise and enjoy spending time with your loved ones who have dementia. Together with Christ Church we support this initiative by providing volunteers to help. Contact AgeUK Sheffield on 0114 2502850 for more information before attending.

Working with Christ Church

We are pleased to work with friends from Christ Church and offer hospitality for some of their activities whilst they are unable to use their own building. Every Thursday morning at 10-30am there is a quiet, reflective Communion Service. During school term-time on Mondays, Tuesdays and Wednesdays at 9-00 am there is an opportunity to join in with Morning Prayers. Everyone will be made very welcome at any of these gatherings.



Your local Advisers for

- . PURCHASES
- . REMORTGAGES
- . LIFE INSURANCE
- . GENERAL INSURANCE

3Sixty Financial Solutions has been providing Mortgage Advice and the associated insurances to Sheffield and the surrounding areas since 2008.

We offer a comprehensive service from initial appointment all the way through to completion. Our appointments are free of charge, we only charge £295 for purchases and zero fees on remortgages.

We offer appointments either in our prestigious offices in Hathersage, over the phone or via video call.

Your home may be repossessed if you do not keep up repayments on your mortgage

To book an appointment visit www.3sixtyfs.co.uk or call 0114 360 3600

 **3SIXTY** FINANCIAL SOLUTIONS



Millhouses Travel Worldchoice

As passionate about travel as you are...
Whether it's a city break, a family week in the sun, a five-star luxury cruise or an intrepid adventure somewhere spectacular - we have the knowledge and experience to create the perfect holiday for you.

Tel: 0114 2351494

16 Terminus Rd, Millhouses, Sheffield S7 2LH
www.millhousestravel.co.uk
info@millhousestravel.co.uk



Over 40 years of Excellence in Travel



totaltreefall

**LANTRA
AWARDS!**
APPROVED

- ★ Domestic & commercial garden maintenance
- ★ One off work or regular maintenance
- ★ All aspects of hedge maintenance
- ★ All aspects of tree work
- ★ All green waste fully recycled
- ★ Fully insured
- ★ Based in the S17 area

**FREE NO
OBLIGATION
QUOTE**

e: whitham86@hotmail.co.uk

t: 07809 888 196

w: totaltreefall.co.uk



SPARRK PV LTD

01142 866252

sparrkp@gmail.com

www.sparrkp.co.uk

SPARRK

Specialists in pioneering energy solutions for the modern electrical landscape

Experts in:

- Solar Photovoltaic (PV) Panels,
- Battery Storage,
- Electric Vehicle Chargers.





Dore Gilbert and Sullivan Society performing at last year's Christmas concert.

The weather eventually warmed up and now it's cooled down again. Rumours are that it is going to warm up and get wet again for a change. No wonder we are always talking about the weather. I even got round to wearing my new shorts for a couple of days! My wife wouldn't let me wear my old ones with the wide legs. I can't understand why.

Anyway, to more important things. A few of the Society members went to see shows at Buxton during the annual Gilbert & Sullivan Festival. It's a mix of amateur and professional performances, all usually excellent. We thoroughly enjoyed

The Charles Court Opera Company's version of The Sorcerer. I've never seen such a soppy love-struck maiden; very funny. Next year we are repeating the format we used this year with staged concerts at Crookes, Dore and Whittington Moor; this time it will be The Mikado but more of that in later editions. The Montgomery Theatre is still not in use. Like all old buildings, once you start work on improvements all sorts of unforeseen problems appear.

Our outings to Wentworth and Bolsover went very well. The quality of the music makes me proud to be associated with such a nice and talented bunch of people. The next concert in Dore will be on Saturday December 21st at 2:30pm. I have no clue as to what the programme might include but I have no doubt it will be very seasonal with some well-known music, carols which we hope everyone will join in, and maybe some unusual pieces.

Tickets will be available as usual by phone on 07565 805405 or via the web at doregass.weebly.com/tickets.html. There will, of course be refreshments provided in the interval.

The Society chooses a charity to support during the year and this year the Society has chosen to support The Alzheimers Association, so at the end of each performance we hold a bucket collection for that organisation. You are no doubt aware that this pernicious disease destroys lives and places an often intolerable burden on carers so we hope you will support us in our efforts to raise money for much needed research.

Here's hoping we get a late spell of dry, warm weather and not too many frosts too soon and I look forward to seeing you at our Christmas Concert.

Derek Habberjam

Dore Male Voice Choir

What a year 2024 is proving to be, sixty years since the Choir officially came into being.

Our anniversary concert was played out to a full house with the Choir and Stannington Brass Band on top form, underpinned by Tom Hutchinson's exceptional cornet playing. This was followed by our annual festival concert in the Community Centre where Joan, our MD, insisted the audience took part, which went down well.

Next was The Seven Hills Beer Festival at Sheffield Tigers where the weather nearly beat us, the first time I have sung in the rain and a gale. The audience were great - they were mostly in the open whilst we were undercover.

Dore Village Society's Party on the Green was most enjoyable, and it was great to see so many youngsters enjoying the performance.

The Gala concert once again was well supported with the wonderful Jessica Ouston and so to a note for your diary - the Christmas concerts at St John's Church, Abbeydale Road South (opposite Abbeydale Sports Club) on 12th, 13th and 14th December 2024 at 7.00pm. Tickets £12.00 including programme, drink and

mince pie can be booked on the DMVC SMS Ticket line. Text your name, number of tickets and the concert date to 0745 279 5440; or from David Heslop, 0114 236 5043, Norman West, 0114 296 0797, any Choir Member or enquiries@doremalevoicechoir.co.uk

Ray Mellor



Carter Knowle Computing Limited

● ● ●

For friendly and professional help and advice on home computing problems:

- Emergency System Recovery
- Networks (wi-fi, home broadband)
- Email, Internet Security (Anti-Virus / Firewalls)
- Transfer of data between old/new PCs
- Set up of new equipment (printers/scanners etc)

With reasonable and competitive rates please contact:

Rob Edwards on 07711 718455
rob.edwards@CarterKnowleComputing.co.uk
www.carterknowlecomputing.co.uk



CW Roofing
New Roofs • Repairs • General Maintenance

Telephone: 0114 236 3455
Mobile: 07966 011825
Dalewood Road, Beauchief

WHIRLOW HALL FARM

Christmas Fayre

Sponsored by
GRI
group

23rd & 24th November 2024
10AM - 3PM

FREE PARKING

Christmas Market
Street Food & Bar
Live Entertainment
Santa's Grotto
Special Princess Guests
Crafts and more!

Adults £6 - kids go FREE
whirlowhallfarm.org

Whirlow Hall Farm Trust

Unstone GardenScapes

Let us transform your garden

From concept to completion

Fully insured.
Over 25 years experience.
Portfolio available.

Decking Fencing Patios Turfing Planting
Or just a general tidy up

Call Jason for a free quote
Mobile 07791069360

bannerjones
solicitors

We know...

Going through **separation or divorce** can be a challenging time. Our expert team are here to guide you every step of the way.

Our services include:

- Financial Settlement advice
- Separation Agreements
- Child Arrangements Orders
- Divorce and Separation advice
- Civil Partnership Dissolution
- Matters relating to children



Speak to our friendly team of experts in Dronfield and Sheffield
on 0333 200 2304 or visit www.bannerjones.co.uk

Dealing With Bad Breaks

Here is an interesting hand to bid and play. West is the dealer and N/S are vulnerable.

South
 ♠ A J 8 7 2
 ♥ A
 ♦ A K 7 6 5
 ♣ 5 3

The bidding:

West	North	East	South
P	P	P	1S
P	2C	P	2D*
P	3D	P	?

* Initially showing five-four in spades and diamonds but intending to bid diamonds again to show five-five. However, with North showing 10 or 11 points and support for diamonds, what should south bid?

Using the losing trick count: with five losers in the south hand and partner showing four card diamond support, an assumed eight loser hand, and a combined total of 26/27 points, five diamonds looks like a good prospect, especially with the attraction of a 500 vulnerable game bonus.

North
 ♠ 10
 ♥ K 9 8 5
 ♦ J 9 8 3
 ♣ A Q 10 7

West leads 9♣

South
 ♠ A J 8 7 2
 ♥ A
 ♦ A K 7 6 5
 ♣ 5 3

From the lead it looks as if West is denying the K♣ and East has this, and possibly J♣. So how to play the hand?

On this layout a cross ruff looks like the best approach, but with success depending on the trump distribution. The percentage play (52%) is for diamonds to split 2/2, making the play straightforward, just giving up two spade tricks at the end. If the split is 3/1 that's tricky and if it's 4/0 with all four in the west hand it's difficult because we could lose a trick to Q♦ as well as two spades. However there's no need to test diamonds immediately and risk the contract.

The best way to play a cross ruff is to cash side suit winners first and that gives us time to assess the layout of the cards.

So, trick one goes 9♣, A♠, 6♣, 3♣

At trick two cross to A♥ to unblock, followed by A♠ and a spade ruff in order to play K♥ and discard a club from hand. Both follow in hearts but, interestingly, west plays K♠ on the second spade leaving us with:

North
 ♠ -
 ♥ 9 8
 ♦ J 9 8
 ♣ Q 10 7

South
 ♠ J 8 7
 ♥ -
 ♦ A K 7 6 5
 ♣ -

Time to pause, what can we infer from the play so far?

East played 6♣ at trick one so is unlikely to have the 4♣ or 2♣. West led 9♣, possibly from 9♣ and 8♣ and so started with four clubs, leaving east with K♣, J♣ and 6♣.

West also has only two spades. That would leave west with seven cards between hearts and diamonds. So west is 3/4 or 4/3. How best to find out which it is?

At this point the lead is in dummy so it's safe to lead a heart and that might reveal west's holding. So lead 8♥ and ruff. West plays Q♥, implying having three hearts (unless West is false carding and also has J♥). That's not good news because west has Q♦, 10♦, 4♦ and 2♦ and we will lose a trick to Q♦. We now suspect that the remaining layout is:

North
 ♠ -
 ♥ 9
 ♦ J 9 8
 ♣ Q 10 7

West
 ♠ -
 ♥ -
 ♦ Q 10 4 2
 ♣ 8 4 2

East
 ♠ Q 9 5
 ♥ J 10
 ♦ -
 ♣ K J

South
 ♠ J 8 7
 ♥ -
 ♦ A K 7 6
 ♣ -

We can't afford to draw trumps because then we won't be able to ruff two spades in dummy. However, if we lead a spade it doesn't matter at what point west wins the queen, we only lose one more trick and so make our contract. We could also take one round of trumps and then a spade ruff and succeed.

So, success depended on recognising the threat and then confirming the trump position before playing trumps.

Here is the initial layout:

North
 ♠ 10
 ♥ K 9 8 5
 ♦ J 9 8 3
 ♣ A Q 10 7

West
 ♠ K 6
 ♥ Q 7 3
 ♦ Q 10 4 2
 ♣ 9 8 4 2

East
 ♠ Q 9 5 4 3
 ♥ J 10 6 4 2
 ♦ -
 ♣ K J 6

South
 ♠ A J 8 7 2
 ♥ A
 ♦ A K 7 6 5
 ♣ 5 3

As it happens, three no trumps also succeeds and that will be the subject of the next article.

Keith Shaw



A1

Plumbing & Bathrooms
 Complete Installation Specialist

Info@A1plumbingandbathrooms.co.uk
 www.A1plumbingandbathrooms.co.uk

Tel - 07738 688 807






- Plumbing Leaks, Bursts & Blockages
- Taps, showers, Radiators, Etc
- All Tiling And Plastering
- Reliable, Fully Insured & Guaranteed
- No Job Too Small, NVQ Qualified

25 Five Trees Ave, Dore, S17 3LW

It's only 30p per word to promote your service locally. Just call the advertising phone 07583 173489 or email advertising@doretodoor.co.uk.

HAIRSTYLIST-Experienced,Professional and Local. City and Guilds Qualified in Hair Design and Cutting to a very high standard. All in the comfort of your own home. For appointments please telephone Suzanne - 07899 996660.

WANTED HI-FI, RECORDS, cassettes anything interesting or vintage. Call me to discuss. I live in S17 so I am local and happy to give you a price. Jeremy 07972 830244.

PILATES CLASSES run by experienced Physiotherapist/Pilates instructor at Dore and Totley URC on Thursdays 1.30-2.30pm, 5.15-6.15pm, 6.15-7.15pm. Please contact Emer on 07792422909 for further information.

CHIROPODY Home Visits Amanda Ross FSSCh.MBChA.DipPodMed Tel: 07904 919775

HORIZON ELECTRICAL All aspects of domestic electrical work. Competitive rates. Phone Totley 236 4364

LOVING HOMES WANTED We are a small Cat Rescue in Dore and we are in desperate need of loving homes for the beautiful cats and kittens currently in our care. If you are interested in re-homing a cat or a kitten now or in the near future, please call 07772 650162 and we will be delighted to show you around.

FINEST GRIMSBY FISH delivered to your door. Please call Ben on 07709 553888

PILATES CLASSES, Dore Old School. Tuesdays 0930-1030. Fridays 0915-1015, 1030-1130, 1140-1240. Stand well, move well and feel good. Improve posture, balance, flexibility and core strength. sallykilnerpilates@gmail.com 07917762502

TRAIN WITH SUZY offers bespoke personal training focussed on fitness, weight loss and body toning. Based in Dore with own home gym, I offer private sessions individually tailored to your goals. Please check out my website www.trainwithsuzy.com Call me for a free consultation 07825-167411

ALAN GODDARD PLUMBING & Heating Dore 103 Limb Lane Dore S17 3ES 0114 2364575 / 07973 181666

DORE QUILTERS meet on the second Wednesday of each month between 6pm and 9pm at Dore Old School, Savage Lane, Dore. Block of the month is demonstrated. Learn to rock the needle, stitch in the ditch, do the Tennessee walk, cycle and recycle. Refreshments served, new members welcome. Contact barbara@daisybee.co.uk or 0114 2620699

IYENGAR YOGA Monday morning class (9.30 – 11.00am) at Dore Old School with an experienced Iyengar Yoga teacher. Contact Heather on 07535 247474 or heatherab@sky.com for further details. Students new to yoga welcome.

COTTAGE ACCOMMODATION in Dore short term, especially suitable for visiting friends and relatives; Phone 236 6014

ATKIN ELECTRICAL Rewires, Sockets, Lights. No job too small. Steve Atkin Your local electrician 07939 285615

PROPERTY MAINTENANCE and improvement. All aspects including painting, tiling, flooring and joinery, decking, fencing, pointing, guttering and stove fitting HETAS approved. Also garden work and unusual jobs. 22 years in business, local. Call Jamie on 01142353297 or 07786906693.

BESPOKE MUSIC TUITION Specialist woodwind teacher with experience in teaching music theory and GCSE music. All abilities are welcome for pleasure, hobby, or exams; tuition is tailored to you. Visit emma-music.co.uk or contact Emma on 07763048915.

DORE AND TOTLEY TILING -All aspects of floor and wall tiling. Free estimates and competitive rates. Phone Andy on 07983 622324

GET FIT AT YOUR HOME OR OUTSIDE – RING 07837 544 845. PT Adam Taylor with 10+ yrs experience & local of Dore. Specialises in getting RUNNERS better through strength / conditioning and injury prevention. 1-2-1 PT training, group PT, online coaching & corporate fitness. Get in touch if you need some help with your training. adam@taylored-personal-training.co.uk www.taylored-personal-training.co.uk

DOG WALKING with Charlotte: - experienced, professional and local dog walker in Dore and Totley area! Fully insured. For more information call 07525 250722.

MP LOCKSMITH Burlington Road, Dore. All locks repaired/replaced. Upgrade your locks to Anti snap locks for insurance purposes. Mark Pidgeon 07752 069013 / 0114 3271824



J S JACKSON & SONS
of Dore
Plumbers & Central Heating Engineers

Tel: (0114) 258 8928
Mobile: 0771 373 0770

ATKIN
ELECTRICAL

- Rewire specialist
- Lights and sockets
- All domestic work carried out
- Electric car chargers installed

Steve Atkin, your local NICEIC registered Part P Electrician

Call for a no obligation quote, no job too small.

Call 07939 285615

steveatkin@sky.com




DEALER APPROVED NCC HABITATION WORK

We are based near Sheffield, South Yorkshire just a short distance from the M1, Meadowhall and the City Centre.

We also do: MOT & Service • Tyres • Brakes • Batteries

AFP MOTORHOMES HIRE & SALES

346 BRIGHTSIDE • SHEFFIELD S9 2SP

0114 261 0522

www.afpmotorhomes.co.uk

NOVEMBER

- Tue 12 Dore Methodist Ladies' Tuesday Group: Andy Foster, Fraud Protection Officer, South Yorkshire Police, will be giving us advice on how to stay safe from fraudsters. Sounds like one meeting not to be missed! At 2.30 p.m. in Dore Methodist Church Hall. Visitors welcome, a donation of £3 is appreciated.
- Wed 20 Dore Garden Club: Exploring the Winter Garden, hosted by Deirdre Leaman, Co-owner Millthorpe Nursery. See page 15 for details
- Wed 27 Totley History Group. Sheffield Hospitals during WW11 by Mary Garside. Totley Library at 7.30pm All welcome, members £2, non-members £3
- Sat 30 Christmas Fayre fundraiser for Transport17, Cross Scythers pub, Baslow Road 10am-12.30pm. Artisan stalls from local craftspeople and artists, bottle bonanza, raffle. Come along and find some Christmas presents. See also page 23.

DECEMBER

- Mon 2 Friends of Gillfield wood. A talk at Totley Library, 7.30pm by Danny Udall, Senior Site Manager, Eastern Moors Partnership on Upland Change in a Nature and Climate Emergency. How the Eastern Moors landscape needs to change to meet the demands of climate change.
- Tue 3 Dore Ladies' Group, Community Centre, Townhead Road, 7.45pm. An evening of musical entertainment with Dronfield Handbell Ringers followed by festive refreshments.
- Wed 4 Dore Village annual Lantern Parade. See page 5 for details.
- Sun 8 Friends of Gillfield wood - Conservation Morning, A practical Conservation Morning. Meet at 10am. Meeting point and tasks are not yet defined. All events are free to members. £3 donation is requested from non-members (apart from Conservation Work).
- Tue 10 Dore Methodist Ladies' Tuesday Group: Our Christmas celebrations are always fun and welcoming. This year there will be festive food and entertainment from "Penny Bun" At 2.30 p.m. in Dore Methodist Church Hall. Visitors welcome, a donation of £3 is appreciated.
- Thu 12 - Sat 14 Dore Male Voice Choir Christmas concerts, Church of St John the Evangelist, Abbeydale Road South, nightly at 7pm. Tickets (£12) text to 0745 279 5440 or from any Chour member. See also page 43.
- Sat 21 Whinfell Quarry Garden Working Day. 9.30am-12.30pm Meet at the main entrance, Whirlow Bridge, Ecclesall Road South, S11 9QD. See page 15.
- Sat 21 Dore Gilbert & Sullivan Society Christmas Concert, Dore Methodist Church, 2.30pm. Tickets (£10) essential, this is always sold out. Available from doregass.weebly.com/concerts.html. See also page 43.
- Sun 22 Dore Methodist Church: Our Carol Service will be on Sunday 22nd December at 10-30 a.m The service will include Carols and Readings and will be led by our Minister, Rev Jonathan Haigh. Come along and sing some of your favourite Christmas Carols. All welcome.
- Tue 24 Dore Methodist Church: Christmas Eve Communion – working with friends from Christ Church we will hold a Christmas Eve Communion Service at 11-30 p.m. on 24th December.
- Wed 25 Dore Methodist Church: Christmas Day workshop – we will join with friends at Totley Rise Methodist Church (Baslow Road) for worship at 10-30 a.m. on Christmas Day
- Fri 27 Dore's annual Wassail Walk leaves Dore Old School car park at 10.30am. Come along with us and blow away the lethargy of the last week's idleness and overeating. We will go whatever the weather, though the exact route depends on the weather. Free mulled wine & mince pies, but not till afterwards! See page 21 for more details.

Sun 29 Dore Methodist Church: we will hold a joint service in our church with friends from Totley Rise Methodist Church. This service will be led by Rev David Willie and members of the congregation.

JANUARY

- Tue 7 Dore Ladies' Group - From Wales to Patagonia Talk. Community Centre, Townhead Road, 7.45pm. Our speaker, Barbara Beard, will talk about 'From Wales to Patagonia'.
- Tue 14 Dore Methodist Ladies' Tuesday Group: The new year brings us a talk from our chosen charity. This will be decided at our meeting in October. At 2.30 p.m. in Dore Methodist Church Hall. Visitors welcome, a donation of £3 is appreciated.
- Sat 17 Whinfell Quarry Garden Working Day. 9.30am-12.30pm Meet at the main entrance, Whirlow Bridge, Ecclesall Road South, S11 9QD. See page 15.

FEBRUARY

Tue 11 Dore Methodist Ladies' Tuesday Group: Don Witton will be entertaining us with an illustrated talk entitled "Once seen, never forgotten". Don is a retired schoolteacher who is now a nurseryman, lecturer and author. At 2.30 p.m. in Dore Methodist Church Hall. Visitors welcome, a donation of £3 is appreciated.

Est 1971
R.S. HEATING & BUILDING CO.

Heating division
 Experienced installers of all types of domestic boilers.
 Authorised installers of Vaillant, Worcester Bosch and Glow worm boilers.
 Systems fully granted.
 Full after sales service dept.

Plumbing division
 Bathrooms, showers, wet rooms, individually designed washing rooms for the disadvantage a speciality.
 A complete service including design.

Building
 Kitchens, complete House renovations including general building, joinery, plastering, tiling, electrical, decorating etc.
 88 Sunnyvale Road, Sheffield S17 4FB

Tel: 0114 2364421
 e: enquiries@rshb.co.uk
 w: www.rshb.co.uk








Takdir
Indian Take-Away

Opening Hours:
 Evenings 5pm -10.30pm
 7 days a week
 Including Bank Holidays

Free Home Delivery
 within 3 miles radius
 minimum order £10

**We cater for parties and
 Deliver right to your doorstep**

Tel: 262 1818
 339 Ecclesall Road South
 Parkhead, Sheffield S11 9PW
 www.takdirtakeaway.co.uk

This article first appeared in Dore to Door issue number 36 of Winter 1994, the third in a series. The first two parts have also been reproduced in our last two issues.

William Cavendish, third Earl of Devonshire (1617-1684)

Namesake of both his grandfather and his father, the third generation William Cavendish inherited the Devonshire earldom at the early age of eleven. If he was to prove a better guardian of the Cavendish estates than his father, careful preparations for his future role had to be completed.

Fortunately, his formative years had been spent under the conscientious influence of his mother, the Countess Christiana, who went on to spend the earliest years of her widowhood settling debts which for a time had threatened to jeopardise the future of her two sons.

This done, the Countess re-employed her late husband's old tutor, the philosopher Thomas Hobbes, to complete and broaden the education of her elder son. Between 1634 and 1637 Hobbes introduced him to the major cities of Europe.

In 1639 the handsome Third Earl of Devonshire married Elizabeth Cecil, daughter of the Earl of Shrewsbury. The previous year he had completed his first term of office as Lord Lieutenant of Derbyshire, following which he became High Steward of Amptill and joint Commissioner of Array for Leicestershire.

The Cavendishes maintained their accustomed royal favour. As a child, William had been created Knight of the Bath at the coronation of Charles I, and the Countess Christiana became a trusted friend of Queen Henrietta Maria. It was inevitable that this prominent Royalist family would later become drawn into the Civil War. From the start the Earl and his younger brother, Charles, put their fortunes and their lives at the disposal of the King. Charles Cavendish, the epitome of a brave and gallant cavalier, raised a regiment at his own expense and saw repeated action as its bold colonel. He rode behind Prince Rupert in the cavalry charge at Edgehill and distinguished himself sufficiently to be given command of Royalist forces in Lincolnshire and Nottinghamshire. At the age of twenty-three he fell in action when his soldiers faced Cromwell at Gainsborough in 1643. It was in memory of Charles Cavendish that his mother built the chapel at Peak Forest. Only after Restoration of the Monarchy could it be dedicated to St. Charles, King and Martyr, according to her wishes.

William, meanwhile, had been present with King Charles at York in 1642, in which year he was expelled from the House of Lords and ordered to stand committed to the Tower. This followed his refusal to take his place in parliament, for which he was impeached, together with eight other peers, of high crimes and misdemeanours.

Well aware of the potential dangers of political protest, the Earl left England to live in France, upon which his estates were sequestered. The Dowager Countess watched events with dismay. The death of her younger son had made William's survival paramount and she used her still-strong influence to persuade him to return to England in 1645 and, of vital importance, to appear willing to compromise his Royalist sympathies by submitting to parliament.

The Earl was pardoned upon a fine of £5,000 and went to live with his mother in her Buckinghamshire home, Latimers. The King spent a night there in the middle of October 1645. After a time the Earl did move back to his childhood home, Hardwick Hall, but had to wait for the Restoration before he could return to Chatsworth, which had been occupied by both sides in turn during the Civil War.

The unassuming lifestyle of the Third Earl, coupled with the disturbances of recent years, left him with no inclination to squander his inheritance. During the Commonwealth he had been restricted to acting as its guardian but once back at Chatsworth he was able to set about attending to its upkeep and restoring order. Updating the great house revealed the first worrying indications of major faults in its proportions when cracks opened up in the masonry.

In 1660 the Earl was reappointed Lord Lieutenant of Derbyshire and Steward of Tutbury before becoming Steward of the High Peak. Having, literally, put his house in order, he allowed himself more time to study literature and science. He started to assemble a library which has since grown into possibly the most important and valuable in private hands in England. Much credit for its foundation must go to his lifelong companion Thomas Hobbes, by this time famous throughout Europe as author of *Leviathan*.

This work was much despised but the philosopher remained under the family's devoted wing until he ended his days in their household in 1679.

William Cavendish survived Thomas Hobbes by only five years. He died on 23 November 1684 at his house at Roehampton and was brought back to Edensor for burial. His widow Elizabeth survived him by five years. Their son and only surviving child, another William, succeeded to the title; a younger son had died unmarried in 1670. The new Earl buried his father with honours which would have befitted a Duke, a title which he felt had been unfairly withheld.

This honour would yet come to the House of Cavendish, and sooner than anyone could have foreseen.

Julie Bunting

Countdown to Christmas

FREE EVENT **FAMILY FUN NIGHT**

A DORE Village Society Event
www.dorevillage.co.uk
Registered Charity Number 107705

Dore Christmas Lantern Parade

Wednesday 4th December
Parade Commences 6:30pm

A parade through Dore Village with Music, Food stalls, Entertainment & Shops Open Late.

Official Turning On Of The Christmas Lights to Light up the Dore Night Sky!

Shops Open Late • Dore Village Lights Switch On
Carol Singing - Live Entertainment
Charity Lanterns & Magic Wands On Sale
Mulled Wine - Mince Pies
Parade led by Gemini Dance Group
Early visit from Santa 7:15pm at The Devonshire Arms

Parade meets Outside The Shops on Causeway Head Road from 6.00 pm - 6.30 pm start

GEMINI SCHOOL OF DANCE

We Shine Bright Together