

DORE to DOOR

DORE VILLAGE SOCIETY

SPRING 1987

This is the First Anniversary issue of Dore to Door and we would like to thank our readers for their support and encouragement. Thanks are also due to our sponsors without whose support, production of Dore to Door would not be possible.

The Village Society and Church have recently held discussions with Community Rural Aid which aims to provide employment for the long term unemployed on schemes to benefit the community, particularly those in rural areas. A list of projects for possible inclusion in a scheme has been given to CRA and we look forward to hearing the outcome shortly. Among the projects suggested by the Society were logging and tidying of footpaths in Dore, conducting a feasibility study on the provision of a library and meeting facilities for the elderly, and other environmental work.

As the Society approaches it's Spring Meeting the year ahead looks exciting for the Village. First the Scout Gala in July

then the Dore Show in September, please give both the support they deserve.

Since our first issue last Spring the face of Dore has changed a little with new housing developments on Dore Road. There is likely to be development of the Tigers RUFC sports facilities in the near future and we will keep you fully informed of all developments in and affecting the Village.

Once again thank you for your support and encouragement over the last year.

DORE VILLAGE SOCIETY

Spring Meeting

29th April 1987 at 8 pm

Old Village School

Speaker: Mrs. Hazel Hoffman M.A.

"Glimpses of Dore - past and present"

RICHARD FARNSWORTH - continuing our series on local people

Richard Farnsworth and his brother John are the third generation of Farnsworth to farm Ryecroft Farm which nestles between Dore Road and Ecclesall Wood.

Richard was born in the cottage in Ryecroft Glen when his Grandfather, J.W.Farnsworth who took over the tenancy of the farm on land owned by the Chatsworth Estate, in 1896, lived at the farm.

Richards father, Dick, together with brothers Willis and Ryecroft, and sister Madge, who still lives in the Village at Causeway Head Farm, were all brought up at Ryecroft Farm. When Dick retired in 1969, Richard and John took over the tenancy.

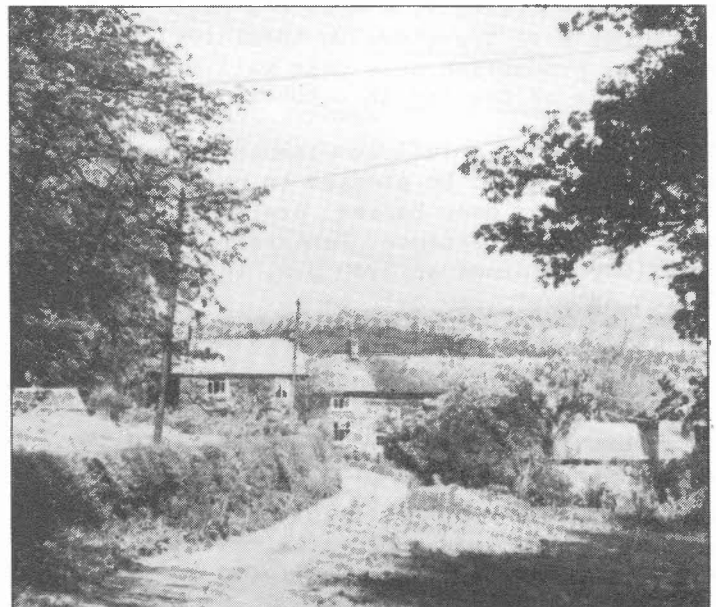
John lives at the farm while Richard, his wife Gillian, a music teacher, and their two sons, live on Rushley Avenue in a house adjoining the farm.

Ryecroft Farm was bought by Sheffield Council in 1940 for £9000 to become part of the Green Belt. The Farm has increased in size from about 50 acres to 130 acres, some of which was acquired when Rushley Farm was demolished in the 1950s.

The Farm is basically a dairy farm with both milk and beef cows, although 40 acres of oats and barley are grown to provide Winter feed.

The farm also has a herd of 400 pigs which are fattened on swill collected from local schools and hotels. Norfolk turkeys are also reared for Christmas and are sold locally.

In addition to farming Richard is Vice Chairman of the Sheffield National Farmers' Union, a bell ringer at Dore Church, of many years standing, and a Trustee of the Dore School and Charity Lands Trust.



Ryecroft Farm in 1970

CPRE

Editorial team: J.Baker, A.C.Bownes and S.Wood.

Published by the Dore Village Society, Limpits Cottage, Dore, Sheffield S17 3DT.



On 11th December 1986, the John Wade Singers presented a cheque for £100 to the Home Farm Trust, Fairthorn, Townhead Road, Dore.

In the picture, Tessa Davies, a Fairthorn resident receives the cheque from John Wade, the conductor and musical director of the concert opera company which bears his name.

The Company was formed four years ago by a group of local singers and quickly attracted the support of several of the principal singers of South Yorkshire Opera, who now regularly take leading roles in the company's productions. Proud of it's high standards, the company was delighted to receive the accolade of a German visitor who compared it favourably to the (professional!) Frankfurt Opera.

All proceeds from the company's concerts are given to charity. The last concert, a performance of Verdi's opera Aida raised over £500, most of which was donated to the Sheffield Childrens' Hospital Gamma Camer Appeal. Fairthorn hope to use their share of the cash to help finance a trip to the Jorvik Centre in York.

Forthcoming productions by the John Wade Singers include a Grand Opera Concert, featuring extracts from Mozart's Magic Flute and Verdi's Il Travatore in April 1987, and the main production this year will be Verdi's The Forces of Destiny in October.

The company has a full complement of female singers but would be pleased to hear from good tenors or deep basses, preferably with some singing experience. Rehearsals are held on Friday evenings at 7.30 p.m. in Totley Church Hall, Totley Hall Lane.

Welcome to...

Norman Kean, the new landlord at the Hare and Hounds, who together with his wife Susan and daughters Samantha and Rachel moved into the village about three months ago.

An ex Navy man, who has spent eight years in steel works, Norman would like to thank everyone who has welcomed his family to the village.

A full lunchtime menu is provided in the Hare and Hounds from noon to 2.00 p.m. Monday to Saturday.

ASH HOUSE

Tucked away in Ash House Lane, formerly Workhouse Lane, Ash House has been a home for old people since 1968.

Originally built in 1915 for a Sheffield solicitor, it retains most of the features of those days, with splendid panelling, decorative plaster ceilings and stained glass windows, one dated 1915 and with the initials R.W.

The home is now undergoing a process of change from being a permanent home to being a holiday home, where old people can spend from one to three weeks. This not only gives a holiday and a change to the old person, but can provide a much needed respite for relatives who may be caring for them.

There is accommodation for 39 people in single or twin bedded rooms. There are several lounges and the views must be some of the most attractive in Sheffield. The grounds, which are cared for by the Recreation Department, are beautiful and extensive, but lack of seating makes it difficult for the residents to enjoy them to the full. Any offers of surplus garden seating would be greatly appreciated.

The local W.R.V.S. have recently donated a croquet set which the residents hope to enjoy this summer.

Some residents receive no visitors, while others have regular contact with family and friends. One such relative, Mrs Ellis, whose mother was until recently at Ash House, not only makes frequent visits, but also provides gifts to be raffled for funds and helped staff give a party to celebrate the Royal Wedding.

The home has it's own mini-bus with driver, and tries to make full use of it, with trips to places and events of interest. The Diary in "Dore to Door" is useful in helping staff know 'what's on' locally.

The Principal, Mrs. Flynn, organises coffee mornings approximately twice a year, but these have not been well supported, maybe because Ash House is somewhat off the beaten track, and the staff and residents would welcome more interest from local people.

HELP!!

Could you help with the production of Dore to Door? Do you have around an hour or so a month to spare?

If so we are looking for help with typing - access to an electric typewriter or word processor is desirable as well as the ability to work to fairly tight deadlines, and to read our handwriting!

We are also looking for one or two people to help with the distribution of Dore to Door, this involves delivering to around 100 homes and takes up to 2 hours per quarter.

If you could help in either of these ways, please give John Baker a ring on 369025.



Eric Gregory

The Devonshire Arms

The Devonshire Arms was built in the 1770s on the site of a public water trough, nestling amongst other stone buildings of the period.

It's external appearance can't have changed that much over the years but the row of cottages and four shops towards Townhead Road, and the blacksmiths and later bakery, towards Causeway Head Road have long since succumbed to the march of progress.

Surprisingly, given that the social activity for many people in the 18th century would have focused on the three pubs in the village, we can find few references to the pub in it's first 150 years, until we get into the period covered by the living memory of the village's oldest inhabitants. Since then it has clearly been associated with a wide variety of local activities, from the Ploughing Society Annual Dinners over 20 years ago, to the now traditional carols from the Dore Male Voice Choir.

Half a century ago a leading local character Bill Thorpe was the licensee. In turn it passed to his son Ted, then to Doug Frith and after the War, to Mr. Creasey. Then came Tom Butler (who has now retired to Leyfield Road), and finally in 1985 to it's present licensees, Jack and Phil Gagg. Natives of Sheffield, Jack and Phil previously ran the Red Lion in Charles Street, and between them have many years experience in the pub trade.

If the exterior of the Devonshire hasn't changed that much until now the interior has, with the gradual removal of internal walls to make larger rooms. Now a major feature of the pub is a circular conservatory-style dining room containing traditional timber beams and pillars. Opened just before Christmas the new conservatory menu offers a selection of home cooked traditional food at reasonable prices, including Sunday lunch.

Alongside the new catering venture the Devonshire still fulfils it's traditional role of refreshing the local populace, which is where we come in.

The Society would welcome information from local people on the history of the Devonshire Arms and it's role in local events. Please ring John Baker or Stella Wood for a chat.

The Boys' Brigade

The Boys' Brigade is the oldest uniformed organisation in the world, founded in 1883 and still going strong.

The Boys' Brigade motto is "Sure and Steadfast" and their modern slogan is "First for Boys".

A wide range of exciting indoor and outdoor activities are offered to boys aged between 6 and 18 in three sections; the Anchor Boys (6-8½), Junior Section (8½-11) and Company and Senior Sections (11 onwards).

For further details please contact the Captain of the Topley Rise Company, Mick Savage, telephone 369002.

Open Door

Open Door is a new venture which has just been started at the Church Hall, Topley Brook Road. It's aim is to provide a centre in this area where people could find a warm welcome and meet with friends.

Open Door also offers help, support and guidance to those who need it. There is professional back-up from social workers and health advisers, and the venture is supported by members and friends of local churches.

Open Door operates on a non-profit making basis and is open every Thursday morning from 9.30 a.m. to noon.

Pickards

typesetting & design

COMPANY NEWSPAPERS · ANNUAL REPORTS · SALES
BROCHURES · PRICE CATALOGUES · ADVERTISEMENTS ·
NEWSLETTERS · MAGAZINES · BOOKS

230 Greystones Road Sheffield S11 7BR Telephone 664620

D O R E S H O W

The Society is now embarking on the detailed planning required to make the Show a success, the first step is the publication of a provisional Class List.

The Show will be held in September, probably in the Old Village School, but before then a good deal remains to be done. A number of people have expressed an interest in helping with the

Show so a meeting has been arranged for all those interested.

If you wish to find out more about the Show, and maybe help in running it, then please come along.

The meeting is to be held at 8.00 on Thursday 19th March in the Village Hall, Townhead Road, and will probably last about one hour.

Provisional Class List

1. Vegetable and Fruit Section

1. 9 pods of Peas
2. 9 pods of Runner Beans
3. 3 Onions
4. 2 Cabbages, any variety
5. 1 vegetable Marrow
6. 2 Lettuce
7. 6 Tomatoes on a plate
8. 6 tree fruit on a plate (eg cherries, plums)
9. 2 Cucumbers
10. 3 Leeks

2. Flowers Section

11. 6 single Asters, any container.
12. 6 Dahlias
13. 3 Gladioli
14. 1 vase of Sweet Peas (max. 18 blooms) foliage only
15. 6 Pansies or Violas
16. 6 Roses, any container
17. 1 Specimen Rose
18. 1 plant in a pot (max. pot size 6 inches)
19. A Wedding Buttonhole
20. A Posy Bowl
21. A Table Decoration
22. A vase of Heathers

*Recipes and notes

Class 29, A Dundee Cake, recipe: 7" tin, ½lb plain flour, 1 tsp. baking powder, pinch of salt, 3 eggs 6oz of margarine or butter, 6oz soft brown sugar, 6oz sultanas, 6oz currants, 2oz peel, 1oz cherries, pinch of mixed spice, 1 tbsp milk and 1oz of almonds for the top.

Class 30, A Victoria Sandwich - jam or lemon curd filled, recipe: weight of two eggs in butter or margarine, sugar and self raising flour, pinch of salt and a little water. Baked in two 6" - 7" tins Sprinkle with caster sugar.

Class 32, A Savoury Flan, notes: shortcrust pastry base, 8" - 9" plain flan ring to be used.

Class 33, A Covered Apple Pie, notes: shortcrust pastry, on a plate not exceeding 10" diameter.

3. Section judged by the Public

23. An arrangement of cut flowers and foliage, arranged for effect, space allowed 2 feet.

4. Floral Art Section

24. "Fascinating Foliage" fresh or preserved, space allowed 2 feet.
25. "A local Inn" interpretive exhibit, space allowed 2'
26. "A September Symphony" an interpretive exhibit, space allowed 2 feet.
27. An Exhibit using a Wicker Basket with a handle, space allowed 18"

N.B. Only fresh or preserved materials may be used: no artificial material.

5. Domestic Section

28. 4 Afternoon Tea Scones with fruit
29. A Dundee Cake*
30. A Victoria Sandwich*
31. 4 Jam or Lemon Curd tarts
32. A Savoury Flan*
33. A Covered Apple Pie*
34. A plate of 6 biscuits, any variety
35. A jar of clear honey

36. A jar of Raspberry jam
37. A jar of Blackcurrant jam
38. A jar of Lemon Curd
39. A jar of Marmalade
40. A bottle of home made wine - dry red
41. A bottle of home made wine - dry white
42. A bottle of home made beer

6. Handicraft Section

43. Any piece of knitting
44. Any piece of embroidery, unmounted
45. Any piece of crocheted work
46. Any garment, machine stitching allowed.

7. Craft Section

47. A Drawing or Painting
48. A photographic exhibit
49. A craft exhibit

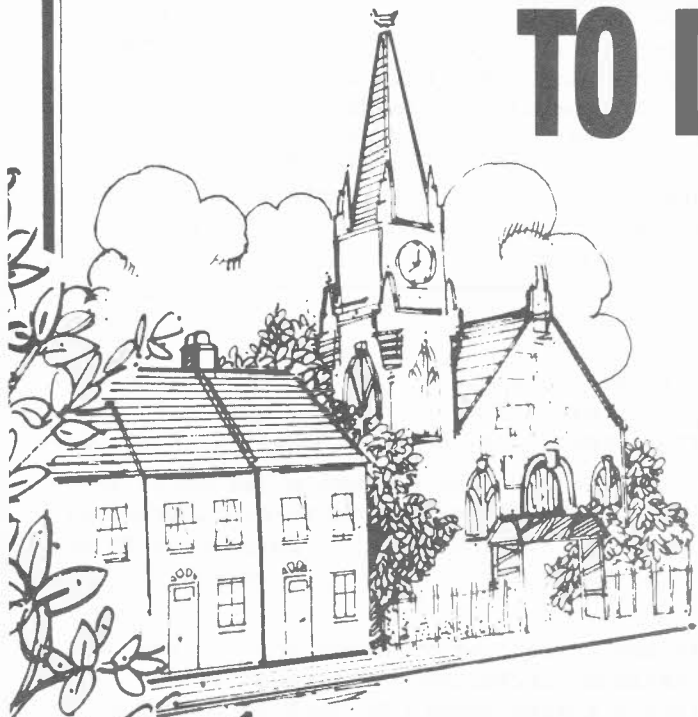
8. Junior Classes

50. A plasticene model entitled "Down on the Farm" Age 8-14
51. A Painting or Drawing unmounted, age up to 7
52. A Painting or Drawing unmounted, age 8-14

MAYNARDS



GIVING A BETTER SERVICE TO DORE...



- **FREE Valuations.**
- **FIVE LUXURIOUS HOUSES** now available — adjacent to 84 Dore Road
- **DEVELOPMENT SITE** — buy a plot and design your dream house.
- **Local knowledge of the area ensures the best advice and help.**
- **Need a mortgage? —** Let Jim Blackstock help you — just ring 752275

All this and more through any one of our five branches.

Locally look out for the sign of success in

TOTLEY

Tel: 367957 or

CITY CENTRE

Tel: 752275

Opening shortly a new branch

at: **BANNER CROSS**

Tel: 670456



...make the most of it with

MAYNARDS

CHARTERED SURVEYORS & ESTATE AGENTS

CITY CENTRE:	Campo Chambers, 26 Campo Lane, Sheffield, S1 1JG.	(0742) 752275
HILLSBOROUGH:	9/11 Middlewood Road, Sheffield, S6 4GU.	(0742) 321132
KILLMARSH:	201 Sheffield Road, Sheffield, S31 8DZ.	(0742) 483447
MOSBOROUGH:	48 High Street, Sheffield, S19 5AE.	(0742) 471421
TOTLEY RISE:	57 Baslow Road, Sheffield, S17 4DL.	(0742) 367957

The casual observer may be forgiven for thinking that the farmland around Dore hasn't changed a lot over the last 25 years. Housing development has been pretty well confined to infilling bounded by Newfield Lane, Blackamoor Crescent and Totley Brook Road. Since the War, the major developments have been the Heatherlea Estate, Rushley, Townhead Road, and Drury Lane, the Wimpey houses, the top end of Devonshire, Busheywood and Burlington Roads. These swallowed up some eight farms. Considerable development activity still goes on, largely by increasing the density of already developed land. Causeway Gardens and Glade are on the site of Eldon Lee's former home and Thornsett Gardens are where the eye specialist Dr. Nutt used to live, and a new development has just started at One Ash, on Dore Road, which was Arnold Laver's family home.

Beyond this fairly well defined boundary though, the fields are still green, and cattle and sheep still graze as they always have done. But here too there have been great changes, though mostly unnoticed. Forty years ago, there were over 20 farms in the Dore area, bordered by Totley and Whirlow, each supporting a family and employing one or two men and a couple of maids in the house. Now there are only two.

Local Explorers

Two 17 year old sixth formers from King Egbert School are seeking sponsors for expeditions this July with the British Schools Exploratory Society.

Andrew Holmes of Furniss Avenue will be carrying out research on alpine plants in Spitzbergen, while Gwyneth Davies is off to Papua New Guinea for botanical studies in the rain forest, while living with a native family.

Their fund raising efforts will include coffee mornings, sponsored walks etc but if you know of any individuals or companies who might help, please ring Mair Davies on 361968.

National Housewives Register

Are you new to the area?
Do you want to make new friends?
Do you enjoy lively discussion?

We are a friendly group of women who meet fortnightly in each other's homes to discuss a wide variety of topics. We also arrange meals, theatre trips and social evenings.

Why not come along one evening to meet us?
For details of the next meeting please ring Frances on 364718.

Still intact as complete units are farms up Whitelow, Hathersage Road and Long Line owned or rented by people whose main source of income is derived from business activities in the City and who run their farms as a secondary activity. These enterprises are very well run and to the lay observer seem a lot tidier than the truly commercial farm, as there is more money to spare for routine maintenance than on the farm which has to support a family from its profits. Most of the remaining land is now fragmented, as when a farm is sold, it is split into individual fields so as to realise the greatest return. For example, when Avenue Farm was sold, some of the fields down Old Hay Lane made £3000 per acre; land which on a straight commercial agricultural basis of getting a 10% return on capital, is only worth about £700 an acre. This compares with about £2000 per acre for the very best Norfolk fenland.

Dore Village Hall

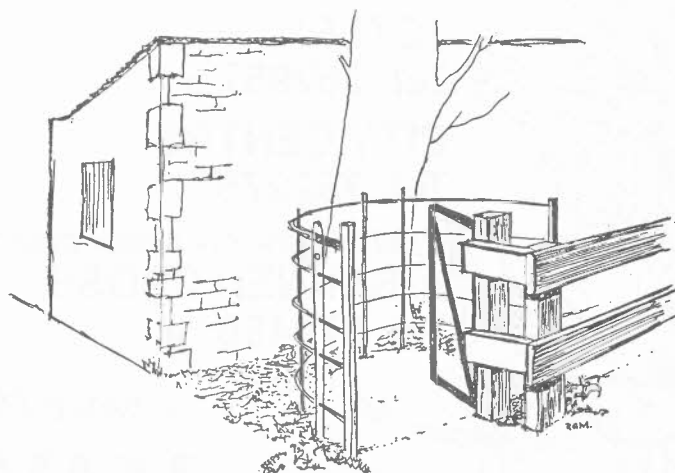
Good progress has been made on the Village Hall following extensive discussions both with the Church authorities and the Charity Commissioners.

The time has now come to form a new Trust to run the Hall. The first step is to elect Trustees, and a public meeting for this purpose is to be held on Monday 16th March at 8.00 p.m. in the Hall.

There are to be five Trustees and written nominations, including a statement of the nominee's assent should be sent to the Vicar at 51 Vicarage Lane, Dore, Sheffield S17 3GY by 9.00 a.m. on 13th March 1987.

CORNERS OF DORE

The Kissing Gate off Vicarage Lane



Richard Moffatt

This issue of Dore to Door has been generously sponsored by Maynards Estate Agents and Jack and Phil Gagg of the Devonshire Arms.

Many thanks to the Council for the Protection of Rural England for permission to use their photograph of Rycroft Farm, Eric Gregory for permission to reproduce his drawing of the Devonshire Arms, and Chris Pickard for technical assistance.

Dear Sir,

I have been associated with handbell ringing for most of my life and would like to form a local team.

Handbells have been used from time immemorial, and there is a very active Association in Britain with over 800 teams. My late father, who was an authority on campinology formed a team in Launton in Oxfordshire, the Launton Handbell Ringers which is still one of the most active teams in the country.

No knowledge of music is needed to ring handbells, and it is a very enjoyable pastime.

I propose having a coffee evening at my home on Friday 21st March at 7.30 p.m. when any of your readers who would like to know more about handbell ringing would be very welcome. Anyone interested should ring 364268 if they would like to come.

Yours sincerely,

Elizabeth Sharpe

Dear Sir,

It is unfortunate and distasteful but the subject of dog dirt within school grounds has to be raised once again.

To many local dog owners the campus of Dore Infant, Junior and King Ecgbert's schools must seem a ideal site for exercising their pets. It is not so ideal to parents who have children attending these schools.

These parents will know the disgusting ritual of cleaning shoes, clothes and carpets to rid them of the disgraceful amount of dog dirt, which is deposited on the school grounds.

Short of patrolling the school grounds or turning the area into a fenced off and guarded complex, there is little the School Governors can do to prevent the inhabitants of Dore from walking their dogs within the school.

All we can do is ask that dog owners show more consideration to others and take any dog deposits home with them to dispose of properly. Remember that if you don't there are lots of small feet which will find it and distribute it freely wherever they walk.

Additionally, worse, is the problem of letting dogs roam free, occasionally allowing them to congregate in groups of three or four. As well as the health hazard mentioned above this can also be extremely dangerous.

Tragedies have occurred in other parts of the country. Please don't let one of our children become a sad statistic when all it takes to avoid it is a small amount of consideration.

Yours sincerely,

Linda Williamson

on behalf of the Governors of
Dore Infant, Dore Junior and
King Ecgbert Schools.

The Village Society has produced a number of publications and brief details are given below. Copies are available from Green's shop on Causeway Head Road.

KING ECGBERT and the TREATY OF DORE: 30p

This publication by Hazel Hoffman, M.A., gives an interesting insight into Anglo-Saxon links with Dore.

THE ORIGINS OF THE SHEFFIELD & CHESTERFIELD RAILWAY. : 12p

This pamphlet by John Dunstan makes very interesting reading. You don't have to be a railway enthusiast to enjoy this publication.

FROM DORE TO DORE. : 98p

This publication edited by Betty Young and Elizabeth Garland is a useful guide to local walks. It also contains some very interesting snippets of local history.

THE STORY OF METHODISM IN DORE. : 50p

Written by John Dunstan this is a very well researched book on Methodism from 1790 to 1907. Makes interesting reading about local people establishing the religion in Dore.

DORE VILLAGE SOCIETY

AIMS

To preserve and enhance the amenities of Dore and to encourage developments which will improve them.

OFFICERS

Chairman:

Mr.P.S.Dutfield
36 Kerwin Drive 365850

Secretary:

Mr.A.C.Bowmes
c/o 5 Vicarage Lane

Treasurer:

Mr.D.Powell
16 Durvale Court 351880

COMMITTEE

Mr.J.R.Baker 369025

Mr.L.J.Conway 361189

Mr.T.Cranfield 363915

Prof. J.Crangle 364113

Mr.D.Dean 368082

Mr.R.M.Fletcher 367826

Mr.P.Thompson 361616

Mrs.S.Wood 366424

DIARY - SPRING 1987

March

- 3 Fish Demonstration, Dore Young Wives, Village Hall, Townhead Road 7.45
- 5 "Sex Education - whose responsibility?" National Housewives Register. Come and air your views, details from Chris Ashford 363965
- 9- Exhibition of Oil Paintings by Louis
- 21 Jennings, Totley Library.
- 10 The History of Fans by Mrs A.L.Kent, Dore Mercia Townswomens Guild, Methodist School Room, 9.30 (members only)
- 11 Demonstration of Oil Painting techniques by Louis Jennings, Totley Library 7.00-9.00
- 11 Talk by pupils on 1986 expeditions, King Ecgbert School Association, Mercia Building, 7.30
- 14 Jumble Sale, King Ecgbert School Association, St Johns Church Hall, Abbeydale Road South, 2.30
- 14 Porter District Group Scout Leaders dinner and disco, tickets 350103.
- 16 Discussion on Women's Magazines, National Housewives Register, details from Frances Dean telephone 364718.
- 16 Dore Village Hall, meeting to elect the Trustees, Townhead Road 8.00
- 18 Alliance Open Meeting on Education addressed by Dr. Peter Gold, Alliance Candidate for Hallam, Old School 7.45
- 18- "House Guest" by Dore and Totley United
- 21 Reformed Church Amateur Dramatic Society, Church Hall Totley Brook Road, 7.45
Details tel: 350061 - evenings.
- 19 Dore Show meeting, Village Hall, Townhead Road, 8.00
- 21 Dore Methodist Church Coffee Morning 10.00 until noon.
- 22 Dore Male Voice Choir Concert at the Crucible Theatre in aid of the Lyceum 7.30.
- 23 South Pacific, King Ecgbert. School, Wessex Hall. Matinee 1.00 (free to OAPs and J4 children)
- 24- South Pacific, Wessex Hall, 7.30, tickets
- 27 from pupils and the School, price £2, OAPs, students and the unwaged 75p.
- 24 Dore Church slide show - Bute and Arran, Village Hall, Townhead Road, 7.45.
Tickets 75p.

April

- 1 "Prevention of Traffic Accidents" P.c. March, National Housewives Register, details from Janet Savage telephone 369002.
- 4 Dore Scouts Jumble Sale, Scout HQ, Rushley Road, 10.00 - 1.00
- 7 Lancome Demonstration, Dore Young Wives, Village Hall, Townhead Road, 7.45
- 8 "Childhood Memories" National Housewives Register, please bring your old photographs, details from Margaret Longden tel. 363642.
- 8 Dore Scouts A.G.M. Scout HQ, Rushley Road, 8.00
- 8 "Hypnotherapy" by Miss Swift, Dore Evening Townswomens Guild, Old Village School, 7.30

- 11 Dore Church Ramble, meet at the car park, Baslow, 2.00
- 11 John Wade Singers Concert including extracts from Magic Flute and Il Travatore, St Johns Church, Abbeydale Road South, 7.15
Tickets £2 (in aid of local charities) 368851
- 11 Jumble Sale and Spring Market, Old Village School, 10.30
- 14 "Puppets" by Mr. and Mrs. B.Arkley, Dore Mercia Townswomens Guild, Methodist School Room, 9.30 (members only)
- 26 Dore Scouts St Georges Day Parade, Sheffield Cathedral, 2.30
- 27 - 2 May
Pirates of Penzance, Dore Gilbert and Sullivan Society, University Drama Studio.
Tickets from Mrs Batey, 8 Blackamoor Cres.
- 27 DHSS Benefits advice and information, Totley Library, 10.00 - 3.00
- 29 Dore Village Society Spring Meeting, Old Village School, 8.00 (see page 1)

May

- 4 Methodist Church Ramble, led by Roy Swallow, meet at 10.30
- 5 Antiques Roadshow by Henry Spencer Fine Arts, Dore Young Wives, Village Hall, Townhead Road 7.45.
- 8 ATC Open Evening addressed by the Lord Mayor, King Ecgbert School, 7.00
- 9 Dore Scouts Horse Racing film evening, disco and supper, for tickets please ring 350103
- 12 "Housekeeper at Chatsworth" by Mrs D.Dean, Dore Mercia Townswomens Guild, Methodist School Room, 9.30 (members only)
- 13 Make-up Demonstration by Mrs Lumb, Dore Evening Townswomens Guild, Old Village School, 7.30
- 16 May Market, Dore Mercia Townswomens Guild, Methodist School Room, 9.30 (members only)
- 16 Jumble Sale, Dore Parents Association, Old Village School, 2.00

June

- 2 Marks and Spencer talk, Dore Young Wives, Village Hall, Townhead Road, 7.45
- 9 "Laughter in Door Knocking" by Miss E. Leighton, Methodist School Room, 9.30 (members only)
- 10 A History of Gardening by Mr. Boyd, Dore Evening Townswomens Guild, Old Village School, 7.30
- 19 Midsummer Serenade with Sheffield Chorale choir, Church Hall, Totley Brook Road, 7.30
Tickets, £2.50 from Kath Taylor tel. 364591
- 20 Summer Fair, Dore Parents Association, Dore Junior School, 2.00
- 21 Methodist Church Anniversary and Picnic
- 24 Dore Church Evening Ramble, for further details please see the Church notice board.

Next Diary deadline 27th May 1987