

DORE to DOOR

DORE VILLAGE SOCIETY

AUTUMN 1989



Nab Farm

Thomas Norman Greaves is a fourth generation of his family to live at Nab Farm, a 300 year old listed building by the village green. He is one of three sons born to Thomas Henry Greaves and his wife, the former Jane Pearson, who came from Cannon Hall Farm, Totley. Mr Greaves grandmother, Mary Ellen Wroe, married James Henry Hampson of Greaves Farm, Bradway, and bore 4 sons and 1 daughter. Mary Ellen's father was Thomas Wroe.

Nab Farm occupied 75-80 acres of land and supported cows, sheep, hens and various crops. Shire horses were bred, and some of their 'swings', (horse brasses) still adorn the fireplace. Corn from nearby farms was milled in the barn.

Mr Greaves attended Dore School and remembers Sammy Thorpe and Norman Fisher among his fellow pupils. He was taught by Misses Marsden, Sibley and Hodkin and Mr Fred. C. Bone.

He also attended Dore Church, where his father was a bell-ringer (first captain of the tower) and a chorister.

After Mr Greaves married Doris Dovey, they and his parents, and a younger brother Henry, who lived in a nearby cottage, all worked the farm. It was hard work, in the days when most jobs were done by 'muscle power'. Mrs Greaves delivered milk, carrying it in metal containers at first, then using a horse and cart. Later still she delivered it from a van, although she had to use a sledge in the winter of '47. Mr Greaves father died in 1940, and his mother in 1953, and two years later the land was lost when Chatsworth Estates sold it for building. The Greaves then turned to rearing poultry for 10 years until they retired in 1965.

Mr Greaves can recall a Dore which is very different from today: when there were only five cars in the village and when a Mr Dungworth ran a 14 seater bus between Dore and Ecclesall, from where passengers caught a tram to Sheffield.

Mr & Mrs Greaves still enjoy gardening and 'living with the four seasons.'

Linzi Henry

DORE VILLAGE SOCIETY ANNUAL GENERAL MEETING

Wednesday 18th October 1989
8.00pm at the Old Village School
Guest Speaker on Natural History

Please see Notice Board for Details

Autumn is the time of year for Annual Meetings as you will see from our Diary on the back page. The Village Society is no exception and our meeting will take place on the 18th October — see box. The main purpose of the meeting is to receive reports on the Society's activities over the last year including our accounts. Also on the agenda is the election of Officers and Committee Members and it is hoped that we can introduce some new faces to help with our activities. Being a member of the Committee involves attending a monthly meeting — usually held on the second Wednesday. If you are interested in standing for election to the Committee or any of the Offices, please ring Andrew Bownes on 352107. Nomination for Committee members, duly proposed and seconded should be sent to Limpits Cottage, Dore S17 3DT by 11 October 1989.

Planning

The Village Society regularly receives complaints about new buildings and extensions in the area. So we are trying to draw up criteria by which planning applications can be considered. The objective is to maintain and enhance the original amenity of building in Dore and ensure that where appropriate building in the regional style be encouraged.

The Society believes that care in design and the use of materials is important not only for aesthetic and visual reasons but also for enhancing the value of the property. For example a flat roofed extension, perhaps to form a porch, or to add to the kitchen rarely fits in with local house styles. This form of construction may be cheap to build but the costs of flat roof replacement every few years need to be taken into account. Other issues include density, materials, and style, a list of suggested headings for planning criteria could include:

- density
- design (eg: flats, bungalow)
- style
- materials
- siting
- garages/parking
- boundary definition

What do you think?

The Committee would very much welcome your views so that a draft set of criteria can be drawn up which it is hoped to publish in the Christmas issue of Dore to Door.

Please write to Limpits Cottage, Dore Sheffield S17 3DT or leave your comments at Greens shop on Causeway Head Road.

We look forward to hearing your views.

Le Dauphin

By popular demand from Tuesday 29th August Le Dauphin, High Street will serve Morning Coffee and Starter and Sweet lunches (a variety of hot and cold dishes of your choice) from Tuesday to Saturday.

Reservations now being taken for Christmas parties.

Bridge

A friendly game of Bridge can be played on alternate Monday evenings from 7.15 to 10.00pm. The venue is Heatherfield Club, Baslow Road, Totley and the next meetings are on 4th and 18th September. Just turn up or ring Hilary on 366083 or Rita on 363159. You don't need to be an expert and you can (preferably not essentially) come with your own partner.

“REWARD”

Two metal clamp type catches, approx. 3" x 1" x 1/2", one white, one aqua blue came off a helicopter flying over the village (mainly over recreation ground) late on Tuesday Afternoon 1st August 89.

Check your Gardens!
£20 Reward for each catch
Tel 0777 83 501

Dore Show

In the 19th century more than half the residents of Dore were engaged in agriculture. It is therefore not surprising that the major event in the social calendar was the Dore, Totley and Holmesfield Agricultural and Horticultural Society Show. This event was held annually on the Cricket field, Dore starting in 1884. In addition to the expected vegetable, fruit, flowers etc. dogs, cats, horses, cattle and pigs were on show. There was leaping, trotting and pony racing. The show, which usually took place on August Bank Holiday Monday continued until the outbreak of the First World War.

On September 21st, 1918, the Dore Cottage Garden and Allotment Society held their first exhibition of vegetables in the Schoolroom, Dore. According to the October issue of the Parish Magazine in that year, the exhibits were “highly creditable”, the profits from the day being sent to the Duchess of Devonshire’s Soldiers Fund. By 1925 the class list had expanded to include flowers, eggs, butter, bread and poultry. This annual show ceased with the outbreak of the Second World War.

Dore Show was introduced by the Dore Village Society in September 1987. In spite of inclement weather and an imperfect registration system, local residents supported the event both in quantity and quality of exhibits and by attending to view. The 1988 show was less well supported, which was most unfortunate as the administrative difficulties had been overcome.

We consider that the Dore Show has an important part to play in fostering the community spirit of the village. Success depends on local residents playing their part. Please examine the class list and make a contribution — it is not winning that counts!

Dore Gilbert & Sullivan Society

In 1970 a group of enthusiasts founded the Dore Gilbert & Sullivan Society and since then the society has staged productions of all Gilbert & Sullivan’s works with the exception of the ‘Grand Duke’. Many of the operettas have been produced more than once, but the first full length production has not been repeated; so, 20 years after its formation, the Society will again stage ‘HMS Pinafore’, this time in conjunction with ‘Trial by Jury’.

The ship’s company and an all male jury mean that next year’s shows are very dependent on having an adequate company of men. If you enjoy singing and are male, aged 16 or over, why not come along and join us? Our first rehearsal will be on Wednesday, September 6th at 8pm in the Village Hall. We look forward to seeing you. If you do not sing, but would be interested in supporting the Society perhaps you would like to become a Patron. For further details please contact Mrs Jo Mather, 16 The Meadway, Dore. Telephone 351051 (Hon. Secretary).

Footnote

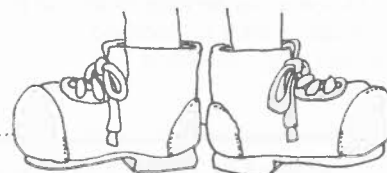
Occasionally one of the Dore to Door team is approached by people who suggest a subject of local interest for publication.

If we feel that it is a good idea, we suggest that the person concerned, who is usually quite knowledgeable about the subject, either submits an article or a few notes.

The usual response is — “Oh I don’t want to push myself forwards,” or “I don’t want to tread on anyone’s toes!”

Dore to Door wouldn’t exist if we all had this attitude. It is a Community newsletter.

Here are our toes — please feel free to tread on them.





Ebenezer Hall of Abbeydale Hall

There is evidence of a building on the present site of Abbeydale Hall as early as 1767. Little is known of its early history prior to 1851 when it was purchased by John Roberts, who lived there until his death in 1888. When Roberts moved to Abby Dale Villa, as it was then known, he was accompanied by his wife Sarah and his partner Ebenezer Hall.

Hall was born on the 18th November 1820, the third of twelve children of a smallholder living at Middleton by Wirksworth. Ebenezer attended the village school at Cromford. His teacher was William Shaw, a friend of John Roberts. Roberts was a Sheffield silversmith, head of the firm Wilkinson and Roberts. He had no children from his marriage to the widowed sister of his partner Henry Wilkinson and was keen to find someone to succeed to his business. William Shaw recommended his promising pupil Ebenezer Hall. In 1836, at the age of 16, Hall moved to Sheffield, where he lived in Shrewsbury Road with Roberts and his wife. In four years he was made a manager, doing most of the travelling on behalf of the firm. He frequently travelled to London and Scotland at the time when travel was by stagecoach, being slow and uncomfortable. At the age of 27 he was taken into partnership by Roberts. When the average weekly wage as £1-10-0, the partners were each allowed to take £2-2-0 per week for their own use. The firm became known as Roberts and Hall.

The Partnership flourished, Roberts gradually withdrawing from active involvement but always showing a great interest. At the Great Exhibition in London of 1851, the firm won a certificate of merit for an exhibit. In 1852 they amalgamated with Martin and Naylor to become Martin Hall and Co. Other members of Hall's family moved from Wirksworth to join the firm. The premises were recorded as being 'clean and cheerful' and their products became famous for both design and quality. A limited liability company was floated in 1866 and by 1876, when both Roberts and Martin had retired, Ebenezer was left to administer the company. Hall also had business interests in stock banking, gas, iron and coal.

Following the purchase of Abby Dale Villa in 1851, Roberts built extensions to the original house and bought land to either side of the Baslow Road. In 1857, there was a serious fire in a locked attic of the house. The fire engine took three quarters of an hour to reach the house and a similar time to extinguish the flames. By this time the roof was falling in, the bedrooms were badly damaged, particularly that of Ebenezer, where the floor had burnt through with debris falling into the breakfast room below. The house was insured for £500 with a further £300 for contents. The actual losses were estimated at £1,300.

Ebenezer Hall was not particularly active politically, preferring the gentlemanly pursuits of hunting and fishing. He was, however, a philanthropist, being involved in many local charities. He was a Trustee and Manager of the local schools. Roberts, feeling the need for a religious outlet in the area gave the land for and the money to build St. John's Church. Hall and Roberts gave money for an endowment fund and contributed towards the provision of the Vicarage. In 1893, Hall gave £3,000 for the building of church rooms for St. Johns.

In February 1876, Hall married Sarah Wilkinson. She was fourteen years his junior and thought to be a relative of Henry Wilkinson, Roberts' partner. Sarah, from Middlesex, had been living at Abbeydale Hall as a companion at the time of the 1871 census. It is likely that Sarah Wilkinson was the niece of Sarah, wife of John Roberts. The workmen of Martin and Hall were delighted, they gave the couple a gift of a silver tea and coffee service and silver ink stand. The newly weds continued to live at Abbeydale with John Roberts and in 1879 went to Australia on a belated honeymoon/business trip. In 1880 Hall bought the Abbeydale Park Estate from the 82 year old Roberts. He also bought Totley Rolling Mill and land and buildings along Baslow Road.

In 1883 the proposals to build a railway line through his estate heralded the start of a five year legal wrangle with the Midland Railway. Hall was concerned that the new line would interfere with the reservoirs on the land, spoil his pleasure grounds and cause noise. After a hearing at a select committee at the House of Commons it was finally agreed to divert the line away from the pleasure grounds and elsewhere create a cutting with an ornamental embankment to minimise the effects.

Into old age Ebenezer Hall continued his weekday journey to and from Sheffield by the railway, which had caused him so much distress. He was remembered as "a wonderful white haired old gentleman". The villagers of Dore and Totley recognised his great contribution at the district by commissioning a local artist, Joseph Bentley to paint a portrait of the old man. A cheer arose at the presentation as the likeness was so good.

Ebenezer Hall died on November 18, 1910 at the age of 90. His wife Sarah died in July 1919. John and Sarah Roberts and Ebenezer and Sarah Hall are all interred in the same vault in Sheffield General Cemetery.

In his will Hall left the house and grounds in trust to his executors and asked for the rest of his land to be sold. Following Sarah's death the Hall and 80 acres of land were withdrawn at auction at £7,000. The hall was rented as a residential hotel to J. Kendrick and Miss Dukes. Kendrick later took out a mortgage on the property. When the house was for sale in 1929, there was again little interest and it was rented by the Norton Rural District Council for £280 per annum plus £102 in rates. It was used as their headquarters for several years. In 1931, Sheffield Corporation bought the remaining Estate.

Letters to the Editor

Dear Sir

The Old Mines of Dore

I am a mining engineer involved with maintaining the old mining records at the Town Hall for the local area including Dore.

Coal, clay, ganister and building stone have been mined in Dore over many generations. It is now difficult to spot the remains from most of the workings, so it is not easy to imagine that the last local colliery did not close until the 1940's!

The material in our records would make a fascinating section in the Village Society's Dore Collection. However, many local people have interesting memories of their own, so if anyone can supply me with stories, anecdotes, photographs or any other records of local mining, I would be pleased to coordinate their inclusion in the Collection. I can be contacted on 368622 or via any committee member, and will acknowledge and return all items.

Paddy McCormick

Dear Sir

As many of you will be aware, each Remembrance Sunday, a parade and service is held at the Dore Memorial.

The service is conducted by the C of E Vicar, and the Methodist Minister, and among those taking part are representatives from the RAF, Scouts, Guides etc, and of course (which is the object of this article) a number of ex-service men and women.

Although there are still a fair number of us, age is inevitably taking its toll, and we would especially welcome any younger ex-service 'persons' to join us. You do not have to be a member of any association fellowship etc — merely ex-service.

We know that there are those who condemn these occasions as a 'glorification of war', and they are perfectly 'free' to hold and voice their opinions. Such 'freedom' is the reason for our remembering those who gave their lives, that it might be preserved.

We meet at The Medway at 10.20am and 'march' through the village to the memorial, accompanied by the Air Cadet band. Please join us and show that Dore does not forget its sons and daughters.

Dear Sir,

As many of you will know, Woods Markets were taken over in Spring by Circle K Convenience Stores, a British based firm jointly owned by an American Corporation and Rupert Murdoch.

Soon after an article appeared in a trade magazine celebrating "the acquisition" and explaining company policy.

"Stores must be open long hours, from 6am to 11pm on average, 7 days a week, 365 days a year."

"All Circle K stores ... carry ... lines which are main brands only," which "could be broken down into 3 types."

- 1) Traffic builders (News and Tobacco)
- 2) Distress purchases (Batteries, films, flowers, greeting-cards)
- 3) Impulse products (?)

Their sales breakdown was News 10%, Tobacco 20%, Sweets 10%, Crisps, Pop, Ice-cream 20%, and Food ONLY 30%.

"Video rental" is "extremely important", and they are "keen to expand into the fast food sector."

Not quite the Woods we know, love and NEED!

Naturally we became anxious. Immediate neighbours about the potential nuisance, small shop-keepers about lost trade, the staff about their jobs and the unsocial hours, the Churches about Sunday (and Christmas Day!) trading, and the customers, about their shop, described by one as "a unique asset to the community."

So I wrote to the directors "outlining our fears". There was no reply, though the 5p charge for carriers was dropped, and, on hearing that evening opening hours were to be extended from July 17th (the thin end of the wedge?) we organised an impromptu picket and boycott. And a petition went out which yielded over 1,100 signatures in approximately one week.

The directors replied. Woods is to remain a "Grocery-based store" possibly with "tailored hours of opening". (Whatever that means). More reassuringly, the Area Manager told manager Brian Pearson that the Delicatessen, Butchery and Greengrocery are to be retained. Meanwhile lines are being axed, and prices are escalating way beyond the rate of inflation. Achieving covertly what is not being overtly admitted?

So I would urge anyone who is concerned about present or future changes to write direct to the Directors at Fareham Point, Wickham Road, Fareham. Hampshire. PO16 7BO, or to ring me, Margaret Mitchell on 361929 (Sheffield).

Margaret Mitchell

The History of Bushey Wood Brook

Dear Sir,

Much interest and historical information has come forward in response to 'In a Shady Nook' article printed in the Summer Edition of Dore to Door.

Mrs McKenzie was the first to ring in and say that her Father Robert Jones built the houses at the top end of Bushey Wood Road in 1957. She wanted us to know that the wooded area which in parts accompanies the Brook was left by a Mr Sampson for the pleasure of local residents and is dedicated to the memory of him. He is thought to have worked out of Abbeydale Hall via Derbyshire Council. She went on to explain that a firm of architects W.T. Parker have in fact got the plans for the area.

Earlier than this in the late 19th Century, housing development started around the Brook area and even earlier than this the Brook is thought to have started as a Bridle Path and perhaps even earlier than this it was a Funeral Path where locals from Bradway and Twentywell Lane area would carry coffins for burial on Dore Church Yard.

When the housing started developing around this time multifarious underground springs were discovered and Bushey Wood Brook is said to be one of them. The field name for such a spring was 'Soakings' — from Soak — a land spring.

Mr and Mrs H Hartley have been resident by the Brook for a lifetime and enthusiastically talked about lovely rural memories of the Brook and woodland.

They illustrated quite vividly their food descriptions and knowledge by lending us a fascinating book 'A History of Dore and Totley from the Ninth to the Twentieth Century' by Vernon Brelsford F.R.A.I. This little book contains a Pandora's Box like magic of local history we are living 'in around and on top of', to read it is to feel quite privileged at living in an area so steeped in historical interest. The book has three illustrations and two maps.

Mr and Mrs Hartley were keenly interested in our effort and plans to clean up Bushey Wood Brook and felt that Mr Sampson would be happy and smiling too.

Betty James

Latin and Greek for all

John Wade, in charge of Classics for King Egbert School and Norton College, has had a very successful first year of giving daytime classes for post-16 students in Latin, New Testament Greek and Classical Studies at both Beginners and Advanced levels. His classes have included a large number of adults from the local communities in Dore and Totley and indeed from as far away as Barnsley and Doncaster.

Enrolment for the 1989/90 classes will take place at Norton College main site on Thursday 7 September, 2.00-8.00pm. If you would like to receive more details about these courses, contact John at King Egbert School (369931 - messages can be left with the switchboard) or at home (360820).

Courses at Abbeydale Hall

Abbeydale Hall Community Education Centre is proposing to offer a wide range of Adult and Community Education courses starting in September 1989. These will include modern languages, arts, crafts, music and writing workshops.

Other proposed interest areas will include subjects varying from English literature, bird watching and music appreciation to discussion groups on philosophy and the civilisations of Greece and Crete together with a look at the immediate post war period of history, cathedrals of England and geology.

Proposed active participation courses will include yoga, sequence dancing, keep fit and ballet and tap for all ages.

Enrolment dates are Wednesday 13 September and Thursday 14 September depending upon individual courses. Full details are contained in the centre brochure which will be available from late August — please look out for them.

Telephone information can be obtained from early September on 368931 (Abbeydale Hall) or 372741 (Norton Campus).

DORE to DOOR

DORE VILLAGE SOCIETY

Special Issue

Dore Show 1989

Saturday 9th September, Old Village School, Savage Lane

September is Show time in Dore; following last year's success the third Show is upon us. As you will see from the class list there are some 60 classes to choose from and there should be something of interest to everyone. Entertainment during the afternoon will be provided by Stannington Brass Band.

Do come along and see the results of other peoples efforts, or better still, enter your own exhibits

The Old Village School will be open to receive exhibits from 9.00-10.30 a.m. on the morning of the Show, the entry fee is 25p per exhibit.

Details of how to enter are shown overleaf.

The Show opens to the public at 2.00 p.m. admission 20p for adults, 10p for children.

The Village Society will have its stand where you can

buy copies of old photographs of Dore as well as Society publications. If you want to join the Society or renew your subscription the people on the stand will be pleased to help. (Annual subscription are £2.00 per household).

At 4.30 p.m. a Grand Charity Auction of the exhibits from the Show will be held with all the proceeds going to the Dore Church Appeals, Riding for the Disabled and the Martin House Hospice. You therefore have a chance to help worthy causes and gain a bargain at the same time.

This Summer has been better weather wise than last and the keen gardeners say that its been a good growing season so it is hoped that we will have a good show.

Abbey Lane Nurseries

Those of you who remember last year's advert in 'Dore to Door' (show edition) listing five generations of the Hill family who have been local Nurserymen should note that 'Father' (Michael) should now read 'Grandfather'. Miles Louis Hill (Andrew & Kylie's son) is not yet one year but is taking his horticultural responsibilities seriously. The family converse entirely in Latin to aid his plant identification!

To Business

We have expanded steadily over the year as our fleet of vehicles perhaps indicates. You will remember that as well as operating a nursery we maintain gardens and do all manner of landscape work. During Winter we can undertake more 'One Off' jobs when our maintenance team have less to do.

Additionally we have built up a supply of natural stone items — york paving, stone troughs, gate posts etc. Please enquire about them, glazed & earthenware patio troughs & bowls — many planted — are also on show at the nurseries.

If you require our services please ring Andrew Hill 360408
Monday — Saturday 8-5. Closed Sundays

How to enter

To enter all classes except 31 and 32, just come to the Old Village School between 9.00 and 10.30 a.m. on the day of the Show.

For classes 31 and 32 write your name and address on a sealed envelope containing 25p and leave it at Greens Home and Garden Supplies by noon on Saturday 2nd September.

Dore Show Saturday 9th S

TIME

9.00-10.30	Exhibitors deposit/make up their exhibits
11.00	Hall Closed — Judging begins
2.00	Show opens to the public

Vegetable and Fruit Section

Judges: Mr T Lloyd and Mr G Chatterton

- | | | |
|----|-----------------------------------|---|
| 1 | 9 Pods of Runner Beans | |
| | | <i>Mr D T Fisher - Property Repairs</i> |
| 2 | 3 Onions, dressed | <i>John Clark, Dairyman</i> |
| 3 | 2 Cabbages, any variety | |
| 4 | 1 vegetable Marrow | |
| 5 | 2 Lettuce | <i>John Clark, Dairyman</i> |
| 6 | 6 Tomatoes on a plate | <i>Greens Home and Garden Suppliers</i> |
| 7 | 2 Turnips or Swedes without tops | <i>Mrs E C Bownes</i> |
| 8 | 4 dessert Apples | <i>Door Moor Inn</i> |
| 9 | 1 Cucumber | <i>Shape Design</i> |
| 10 | 1 Cauliflower, leaves turned back | |
| 11 | 4 Beetroot | |
| 12 | 4 white Potatoes | <i>The Tasty Plaice</i> |
| 13 | 4 red Potatoes | |

Floral Art Section

Judges: Mrs B Booth and Mrs A Hancock

- | | | |
|----|---|---|
| 26 | "Simplicity" space allowed 18" | <i>Yorkshire Co-op</i> |
| 27 | A miniature arrangement, not more than 4" overall | <i>The Tasty Plaice</i> |
| 28 | "Dahlia Delight" any design, space allowed 24" | <i>Greens Home and Garden Suppliers</i> |
| 29 | "Summer Madness" an interpretive exhibit, space allowed 24" | <i>Valerie of Dore</i> |
| 30 | An exhibit using a Wicker Basket with a handle, space allowed 24" | <i>Valerie of Dore</i> |

No artificial material may be used. Max height 3' with no more than 2 entries per class per person.

Flower Section

Judges: Mr T Lloyd and Mr G Chatterton

- | | | |
|----|---|------------------------|
| 14 | 5 Dahlias, cactus variety | <i>Hair +</i> |
| 15 | 5 Dahlias, decorative variety | |
| 16 | 5 Dahlias, pom-pom variety | |
| 17 | 3 Gladioli | <i>Mr P S Dutfield</i> |
| 18 | 3 Chrysanthemums, incurved or reflexed (same variety) | <i>Hare and Hounds</i> |
| 19 | A vase of spray Chrysanthemums | |
| 20 | 6 Roses, any container | <i>Dore Classics</i> |
| 21 | A vase of hardy perennial flowers | |
| 22 | 1 plant in a pot (max pot size 6") | |
| 23 | A vase of annuals | <i>Dore Moor Inn</i> |
| 24 | A Table Decoration (max size 9") | |
| 25 | A vase of Heathers (max size 6") | |

Garden Section

Judges: Mr C Hearne and Mr C Richardson

- | | | |
|----|--|--------------------------------|
| 31 | A local garden judged for appearance, flowers and layout | <i>Abbeydale Garden Centre</i> |
| 32 | A local garden judged for produce, fruit and/or vegetables | <i>Abbeydale Garden Centre</i> |

The Show Committee would like to thank all those who through practical assistance or financial donations have made the show possible including Founders and Patrons, Class Sponsors, and Advertisers in this programme. Special thanks to the Dore Moor Inn.

AWA

- | | | |
|---------------------|---|--|
| Founders Cup | — | Awarded for the outstanding exhibit of the |
| Skelton Cup | — | Awarded to the individual gaining the most |
| Society Cup | — | Awarded to the individual gaining the most |
| Midland Bank Shield | — | Awarded to the winner of Class 58. |

The names of the businesses and individuals who have sponsored prize n

Programme

September 1989

TABLE

- 4.15 Exhibitors to remove any exhibits not to be included in the Auction
- 4.30 Grand Charity Auction
Presentation of Awards and Raffle draw

Domestic Section

Judge: Mr U Held

- 33 4 Afternoon Tea Scones with fruit *Dore Delicatessen*
- 34 A Dundee Cake
- 35 A Victoria Sandwich *Crusty Cob*
- 36 4 Jam or Lemon Curd Tarts
- 37 A Savoury Flan *Dore Moor Inn*
- 38 A Covered Apple Pie
- 39 A plate of 6 biscuits, any variety
- 40 A loaf of Bread *Mick Wilkinson, Plasterer*
- 41 A presentation of Salad

Preserves Judge:

- 42 A jar of Raspberry Jam *Dore Moor Inn*
- 43 A jar of Lemon Curd
- 44 A jar of Marmalade *Mr A Bentley, Fishmonger*

Wine Judge: Mr R Birch

- 45 A bottle of home made wine, dry red
Mitchell's Wine Merchants
- 46 A bottle of home made wine, sweet red
Mitchell's Wine Merchants
- 47 A bottle of home made wine, dry white
Mitchell's Wine Merchants
- 48 A bottle of home made wine, sweet white
Mitchell's Wine Merchants

RDS

show.

points overall in the vegetable, fruit and flower sections.

points overall in the Domestic, handicraft and craft sections.

Money or vouchers are shown in italics by the class they have sponsored.

Cash prizes or vouchers will be awarded as follows:

1st Prize £3

2nd Prize £2

3rd Prize £1

Handicraft Section

Judge: Mrs M Blackshaw

- 49 A knitted man's pullover
- 50 A piece of embroidery *Dore Moor Inn*
- 51 A piece of crotched work
- 52 A garment, machine stitching allowed

Craft Section

Judge: Mr N Bevan

- 53 A drawing or painting of a local subject
Colin Thompson & Sons

Photographic Judge: Mr E Gregory

- 54 A photographic portrait *K Moore Chemist*
- 55 A craft exhibit *Mrs Clover, Dore Post Office*

Junior Classes

Judge: Mrs M Howarth

- 56 A potato animal age up to 7 *Dore Delicatessen*
- 57 A painting or drawing, unmounted, age up to 7
Dore Service Station
- 58 A painting or drawing, unmounted, age 8-14
Midland Bank PLC
- 59 A garden on a meat dish *Country Garden*
- 60 An arrangement of wild flowers in an egg cup
Sandy's Corner Shop

Raffle Prizes donated by:

Kutz Hair Design, United News Shops, Scruples, Winterschluden, Mitchells Wines and Mrs Bingham.

Founders And Patrons

Founders

Mr. A.C. Bownes
Mr & Mrs S.L. Hinchliffe
Mr & Mrs. D. Woskow

Patrons

Mr & Mrs. P.J. Ford
Mr & Mrs. D.C. Law
Mr & Mrs. R. Skelton

Generous financial support has also been received from many anonymous donors both individuals, businesses and members of the Dore Village Society Committee.

Ferndale

nursery and garden centre

THE GARDENERS' CENTRE

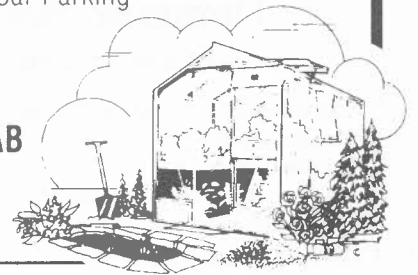
- We aim to provide the best plants, trees, shrubs, bulbs, seeds & gardening products for the keen & new gardener
- Visit our lovely gardens & browse around at your leisure
- Expert advice is always at hand from highly trained staff



WELL STOCKED AQUATIC DEPARTMENT

- Individual Garden Design Service
- Indoor Plant & Florist Dept.
- Coffee Shop - Free Car Parking

Dyche Lane,
Coal Aston,
Sheffield S18 6AB
Tel: Dronfield
412763



Grateful thanks are due to the following for their assistance in helping make the Show run smoothly:

Mr J R Baker
Mr W Hill
Mr A Owen
Mrs D Watson

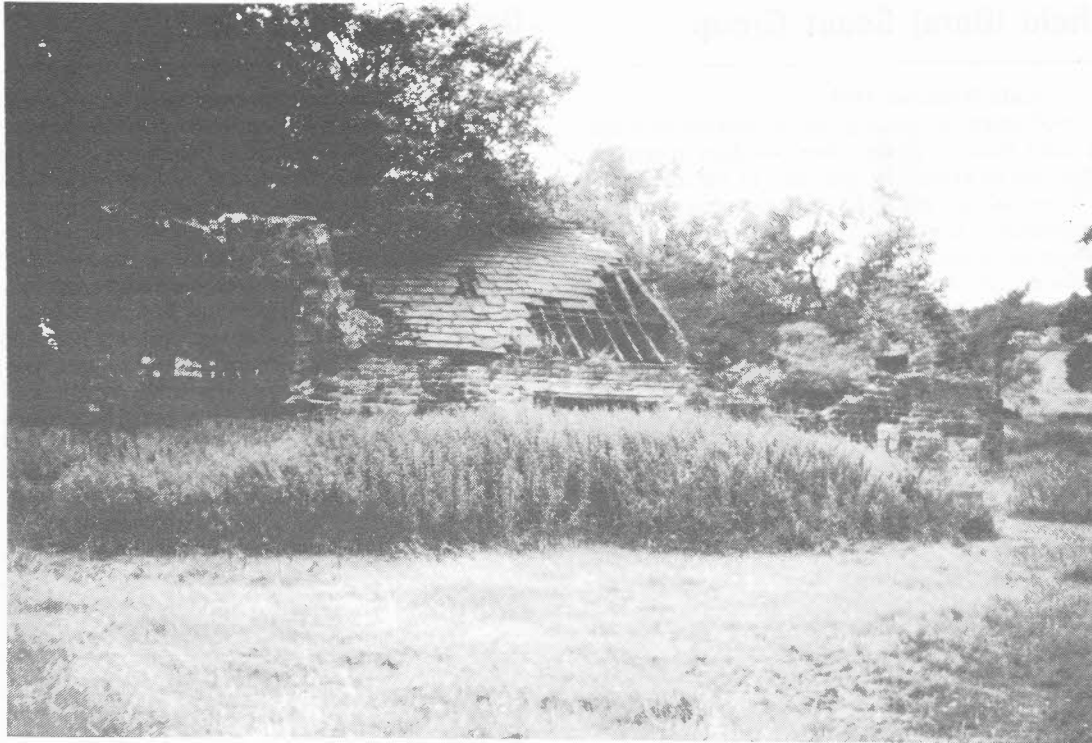
Mrs L Baker
Mrs C McGowen
Mr R Skelton
Mrs S Wood

Thanks also to the judges and members of the Dore Village Society Committee who assisted.

We will shortly be starting to plan next year's Show which will take place on Saturday 8th September 1990.

If you have any comments or suggestions about the Show or are interested in helping organise it, please write to

Limpits Cottage, Dore, Sheffield S17 3DT.



Barberfields Copperas House

Many of you will have walked up the Limb Valley from Whirlow Brook Park towards Ringinglow. Near the end of this route, on the left, are a pair of stone gateposts near a derelict building.

This was the Barberfields Copperas Works which was used from approximately 1815. The land was owned by the Duke of Devonshire and tenanted by Josiah Claughton. There is still evidence of mine workings in the area, from which came the dross-poor grade coal containing a high proportion of iron Pyrites or 'fools gold'. The dross was laid out in beds with bases of stone slabs and exposed to the elements. This allowed for the slow oxidation of the pyrites to form ferrous sulphate, the excess sulphur in the solution allowing for the production of sulphuric acid. The resulting liquid was transferred to a cistern and heated for several days with scrap iron.

The concentrated solution of ferrous sulphate or copperas was placed in glass carboys or lead containers for transfer from the site. Alternatively ferrous sulphate crystals could be removed from the solution and drained and dried.

Copperas was used by dyers as a mordant for fixing dyes. Claughton had contracts with the leather industry. It is likely that his product was used in the tanning process.

A book produced in 1831 states that "the killing scent of this manufacture is visible in its effects all around" (Walks in the Neighbourhood of Sheffield Yorkshire 1830/31).

By 1871 the building was inhabited by a farmer, Henry Lee, the local supply of Pyrites having apparently come to an end. The main building of the Copperas works was used as a farmhouse until the late 1940's. Since then it has fallen into decline, the roof having fallen in and some features being obscured by nettles. With care it is possible to discover the vat behind the building with its vaulted roof and behind these the outline of the open tanks.



267th Sheffield (Dore) Scout Group

Gala Weekend 1989

Never during my involvement in leading the promotion of Gala weekend festivities can I recall an anxiety free two days in respect of weather. This year was no exception, our fears of the inevitable were confirmed as torrential rain made the early morning planning devoid of any atmosphere. Undaunted we pressed on as the likelihood of fine weather receded. At 1.30pm the possibility of parading appeared out of the question. However we were appreciative of the cessation of rain between 1.50pm and 5.10pm. We cannot emphasise, sufficiently our grateful appreciation to our loyal supporters, who faithfully come along to give their support, making the event a real success. Saturday evening again we were deluged with water, how ironical that the following day we would give thanks for water. I leave it to your imagination the views expressed during the day.

The Well Dressing Service, was exceptionally well attended by the uniformed organisations and the sun shone for the march past. So concluded a happy challenging two days, leaving us with an appreciative, but much reduced balance sheet. The increased advertising revenue acted as insurance, additional advertisers are welcome.

So we now commence plans for July 14th/15th 1990 when we hope to once again contribute to the social well being in Dore, our first objective in keeping with the spirit of the much valued Dore Village Society. Thankyou Everyone.

Syd Crowson

Group Scout Leader.

Dore Male Voice Choir

Dore Male Voice Choir has once again had a very interesting season. One highspot was a concert/holiday trip to Germany and Holland, which although a bit hectic at times, was enjoyed by everyone. We gave two concerts in Sheffield's twin town Bochum, and made friends with a choir from Arcen, which we hope will visit in the not too distant future. We were successful for the third time in succession at Llangollen International Eisteddfod, gaining third place once again. With a few more singers, especially bass, we feel that we could do even better.

We enjoyed a wonderful day in York on June 17th when we were some of the '1000 Yorkshire Voices' singing in York Minster.

After the summer break, rehearsals will resume on Thursday September 6th from 7.30 to 9.30 pm in The Church Hall, Townhead Road, when we shall be pleased to see any potential new members. An open night will be held on Thursday 28th September. For concert dates — see Diary on back page.

Walter Gillatt, Hon. Secretary

Delivery of Dore to Door

Several people responded to our request for deliverers of Dore to Door — Thankyou!

We now need someone to deliver to Devonshire Rd, Close, Glen Drive & Grove. This round could be divided into two. If you would like to help, please telephone John Baker on 369025 or Stella Wood on 366424.

CAR

FORECOURT

PERSONAL

Service Service Service

At your local

TOTLEY GARAGE

- ┆ Any make or model servicing and repair
- ┆ MOT testing while you wait with free retest
- ┆ Diagnostic engine tuning
- ┆ Accessory fitting (eg. Alarm Systems. Sunroofs. Towbars. Car Phones etc.)
- ┆ Conversion to unleaded petrol

- ┆ Petrol at competitive prices - Lead Free now available
- ┆ Forecourt Shop - Milk, Cigarettes, Barbeque Supplies.
- ┆ We're full from floor to ceiling.
- ┆ FREE AIR!
- ┆ Opening Hours
7.30 - 10.00 Mon to Sat
9.00 - 10.00 Sun

- ┆ Free loan car (by appointment).
- ┆ Free collection/delivery service - (Dore, Bradway, Dronfield, Greenhill)
- ┆ Businessman's Service Package (Loan car, Free wash, Collection & Delivery)
- ┆ For friendly personal service and professional advice please contact John Green our service manager.

We're just too good to drive past!



The company which specialises in happy customers

MARSTONE GARAGE

Baslow Road, Totley, Sheffield

TEL: (0742) 351415



NEW DAIHATSU

QUALITY USED CARS

Bushey Wood

This area of land lying between Devonshire Road and Bushey Wood Road was presented to the Norton Rural District Council in 1930. The gift, for the enjoyment of the public, was donated by Edward Sampson, surveyor to the Norton Rural District Council. In 1934 the land was acquired by the City of Sheffield when Dore was administratively transferred from Derbyshire to Yorkshire.

John Dunstan, a local historian, traced mention of the area back to 1649. At that time the land was owned by Leonard Gill of Norton and John Bright. In the later part of the 18th century the land was part owned by John Marsden, a corn miller of Bradway. The property changed hands again before being owned by predecessors of Edward Sampson.

In 1933 the Council discussed the future of Bushey Wood and decided that apart from a little pruning of trees, it should be kept as it was. In June 1967, John Dunstan wrote an article in the Parish Magazine expressing concern over encroachment and dumping related to Bushey Wood. There has been spasmodic correspondence between villagers and the local authority from this time. The main difficulty being an agreement on the clearly defined ownership of the land.

In 1970 the Town Clerk wrote to some residents of Bushey Wood Road and Devonshire Road asking for agreement to maintain the woodland which *may* be part of the bottom of their gardens. In October 1970 the General Manager of the Recreation Department wrote to the Dore Village Society stating that - "the Town Clerk has now authorised the Recreation Department to assume the maintenance of the woodland on a minimal basis" and he went on to ask for the Society's "full co-operation in the event of any resident or unauthorised persons undertaking thinning or other actions, which would result in deterioration of the woodland." This was duly reported by the Chairman at the Annual General Meeting of the Dore Village Society. It would appear that there was some opposition to the intervention and the offer was withdrawn at a later date.

Concern was expressed in December 1971 when an area of the wood was closed off and 'Private Property' notices appeared. Since that time there have been further instances of alleged encroachment although clear boundaries have sometimes been difficult to identify. It is certain that in spite of some local opposition, over the last fifty years this gift to the City has been seriously reduced in size and its amenity value lessened by the dumping of domestic refuse and garden rubbish.

Bushey Wood Brook

Considerable interest has been shown in Bushey Wood and stream since the article in our summer issue of Dore to Door.

Sheffield City Wildlife Project has surveyed the site and provided a list of plants, trees and animals. One of their members also turned up on 'Skip Day' to record our efforts on film. Several local people contacted Betty James with information and reminiscences about Bushey Wood. All the information is being filed, and will, hopefully, one day form part of the Dore Collection.

About 20 people, including some children, turned up on June 24th to help fill the skip provided by Dore Village Society. It was soon filled with glass, plastic and metal waste including a kitchen sink! Much of the garden rubbish was burnt. A lame blackbird and several startled frogs watched proceedings. All the litter from the footpath where it begins at Devonshire Road up to the footbridge was removed and we all felt that at the end of the day, during which refreshments were provided by Betty James (whose idea it was), we had achieved something.

Unfortunately more garden rubbish is appearing by the stream, in spite of leaflets to all houses bordering it and all our hard work. The Sheffield City Wildlife Project has suggested that gardeners would be doing themselves, and us, a favour by building a simple, compost bin and turning their garden rubbish into valuable compost instead of polluting the stream and spoiling local amenities.

Perhaps if you know of a local 'eyesore' you would contact a committee member (names on back page) and we could get together to do something about it.



Christ Church Dore – 160th Anniversary Celebrations

We are holding special events at the beginning of September to commemorate 160 years since the consecration of our Church. Below you will find a list of the main events, to which we may add a reading of the New Testament on Friday September 8th. If you would like to take part please ring Sheila Wilkinson on 366624.

All proceeds from fund raising events will go to our Anniversary Appeal, which is in aid of a complete restoration of the Church, including a new lighting scheme, organ overhaul, and now an improvement of the facilities in the west end is being considered. PLEASE do come and enjoy these activities.....

PROGRAMME

SUNDAY SEPT. 3 11am

Choral and Dedication of new seat runners and new hassocks. The Church is open for viewing at the service and afterwards until 12.30pm and from 2 to 5pm.

FLOWER FESTIVAL — Theme: The 'Te Deum'. Thanksgiving

Friday Sept. 8 10am - 8pm
Saturday Sept. 9 10am - 7pm
Sunday Sept. 10 1.30pm - 5.30pm

Refreshments available.

SATURDAY SEPT. 9th 7.15pm

Parish Concert in the Church Hall. Adults £1 Children 50p

SPECIAL SUNDAY SERVICES

September 10 9.30am The Bishop of Doncaster
 11am Mr Wainwright
 6.30pm Rev. L. Lowther

September 17 9.30am Rev. M. Brown

September 24 9.30am The Bishop of Sheffield

SATURDAY SEPTEMBER 16:

Parish Picnic, 2.30pm

— to take place in Junior School field behind the Vicarage, sponsored by Mother's Union, but for everyone. Please bring own food and drink. Games, races, etc. Cutting of 160th Anniversary Cake.

SATURDAY SEPTEMBER 16 7.30pm

Dore Male Voice Choir — concert in Christ Church. Tickets £2.

ALL ARE WELCOME AT ALL EVENTS. PLEASE JOIN IN OUR THANKSGIVING FOR BLESSINGS GIVEN.

DIARY

SEPT

- 5 **A Tasty Chat.** Dore Methodist Church Tuesday Group Methodist Hall. 7.45pm
- 12 **"Auctioneering"** Mr D Marriott. Mercia T.G. Methodist Hall 9.30am Members Only.
- 12 **"The Mary Rose"** History and update Mr G R Wade. Christ Church Ladies Group Church Hall 7.45pm. Open Meeting.
- 13 **Ladies Keep Fit** — for 12 weeks. King Ecgbert's School. Wessex. Every Wednesday 7.30pm.
- 13 **"Consumer Advertising"** Mr K Bell. Dore (E) T G Old School. 7.30pm.
- 16 **Family Picnic** Christ Church Mothers' Union. See Posters for details.
- 16 **Dore Male Voice Choir Concert** Dore Church
- 19 **Superstitions** Mrs M Newsam. Mercia T.G. Methodist Hall 9.30am. Members only.
- 19 **A.G.M. and Social.** Christ Church Mother's Union.
- 19 **Looking After Our Feathered Friends** Alma Owen. Methodist Church Tuesday Group. Methodist Hall. 7.45pm
- 21 **Ladies Keep Fit** begins. St John's Church Hall 10am to 11.30am
- 27 **Quiet Morning** Chrsit Church Mother's Union. All Saints. Ecclesall. 10.30am. Bring packed lunch.
- 28 **Open Night** Dore Male Voice Choir. Church Hall.
- 30 **Buffet and Disco** to celebrate 267th Dore Scout Troops 40th Birthday.

SEPT

- 2—14 **Exhibition of paintings.** by local artist Valerie Blake. Totley Library
- 3 **AGM and talk on cheeses.** Christ Church Ladies Group. Church Hall 7.45pm
- 3 **Marching into Burma** Col. McDonald. Methodist Tuesday Group. Methodist Hall 7.45pm
- 10 **Crime and Punishment** in Derbyshire from 18th Century. Mrs Kitty Battye. Mercia T.G. Methodist Hall 9.30am Members only.
- 11 **"Chantryland" - slides** Mr J.E. Vickers. Dore(E) T.G. Old School. 7.30pm
- 17 **Painting with Pleasure** Mr G Wax. Mercia T.G. Methodist Hall 9.30am. Members only.
- 17 **Female Safety P.C.** Thomas. Methodist Tuesday Group. Methodist Hall 7.45pm
- 18 **Dore Village Society AGM** Old School. 8pm. Please see Notice Board for further details.
- 23—
Nov11 **Healthy Eating Exhibition** Totley Library
- 27—28 **Dore Art Group Annual Exhibition** Old School. 9am to 6pm. Admission Free.
- 28 **Dore Male Voice Choir Concert** Solihul, Birmingham
- 31 **"Don't Mrs Worthington"** D.G. Tomlinson. Methodist Tuesday Group. Methodist Hall. 7.45pm

NOV

- 8 **AGM** Dore(E) T.G. Old School. 7.30pm
- 14 **Traditional Heritage Museum.** Methodist Tuesday Group.
- 14 **AGM** Mercia T.G. Methodist Hall 9.30am. Members only
- 18 **Dore Male Voice Choir Concert** Firth Hall University
- 21 **Old Sheffield Workhouse** Mrs Flett. Mercia T.G. Members only.
- 25 **Concert—Dore Male Voice Choir.** Victoria Hall
- 28 **Guide Dogs for the Blind** Mr T Clarke. Methodist Tuesday Group. Methodist Hall 7.45pm

DEC

- 2 **Christmas Dinner and Dance.** 267th Dore Scouts.

Every Saturday (unless advised) Venture Scouts Car Wash Service. Scout H.Q. 10am to 12noon (and coffee £1)

Second Saturday each month. Scout waste paper collection. Recreation Ground Car Park, Townhead Road.

Bottle Bank collection — Scout H.Q. Rushley Road

David Phillips, F.R.C.O., Dip.R.A.M.

ORGANIST AT THE VICTORIA HALL, SHEFFIELD

Tuition in Piano, Organ and Theory

Accompanist for Choral Concerts,
Associated Board Examinations
Instrumental and Vocal practice sessions.

Telephone: Sheffield 369704

115 TOTLEY BROOK ROAD

• TAYLOR PATTERSON • EDLINGTON LTD •

INDEPENDENT FINANCIAL ADVISERS

LIFE-ASSURANCE, PENSIONS, SAVINGS, INVESTMENTS
MORTGAGES, GENERAL INSURANCE, ETC.

Thought for Autumn

Is your house worth £100,000+?
If so, will your children have to pay
INHERITANCE-TAX

Plan ahead — talk it over with us

2 Earl Street, Sheffield S1 4PY
Tel. 731139 (Ask for John Edlington)

APPOINTED REPRESENTATIVE OF TAYLOR PATTERSON
ASSOCIATES LTD. A MEMBER OF FIMBRA. ASSOCIATION OF
PENSIONERS TRUSTEES AND REGISTERED I.B.R.C.

DORE VILLAGE SOCIETY

AIMS — To preserve and enhance the amenities of Dore and to encourage developments which will improve them.

OFFICERS —

Chairman:
Mr. A.C. Bownes, Limpits cottage 352107

Secretary:
Mrs. S. Wood, 87 Abbeydale Park Rise 366424

Treasurer:
Mr. C. Myers, 1 Rushley Avenue 365658

COMMITTEE —

Mr. J.R. Baker	369025
Mrs E.C. Bownes	352107
Mr. L.J. Conway (Planning)	361189
Mr. D. Crookes	351468
Mr. D. Dean	368082
Mr. P.S. Dutfield	365850
Mr. J.W. Laver	361286
Mr. G. Taylor (Subscriptions)	350484

The Committee meets on the 2nd Wednesday of each month.