

DORE to DOOR

DORE VILLAGE SOCIETY

No. 22

SUMMER 1991

Unitary Development Plan

City planners have put the finishing touches to the first draft of the Unitary Development Plan (UDP) which sets out proposals for the whole of Sheffield except the City centre and the Peak Park.

The UDP is a planning framework for Sheffield for the next decade and will have statutory force when the final version is accepted by the Secretary of State at the Department of the Environment.

The Plan's main concerns are the environment, development and the use of land. There are proposals for a wide range of issues including buildings, industry, housing, community facilities, shopping, leisure and recreation, pollution and waste and transport.

The proposals for Dore include

- maintaining a strong tight Green Belt around Dore including the addition of farm land at Rycroft Farm
- the designation of the bottom part of Dore Road as an Area of Special Character
- the very highest quality of design and materials will be expected in the Conservation area and Areas of Special Character
- sites for new houses are proposed at Knowle Green House at the end of Townhead Road and on Totley Brook Road below the bus terminus.

In addition there are general proposals on the types of development to be allowed in residential and shopping areas. The draft UDP is now available for public consultation and a copy has been sent to the Village Society.

The Society has organised an open evening at the Old Village School on Wednesday 19th June between 6.00 and 8.00 p.m. when you may watch the Council video on the UDP and examine the various documents and maps. At 7.00 p.m. Mr. Empsall from the Department of Land and Planning will address the meeting to explain the Plan and take any questions. All are welcome and we look forward to seeing you.

Dore Village Society

Draft Unitary Development Plan

A public meeting has been arranged by the Society as part of the public consultation on the Plan

Old Village School

Wednesday 19th June 1991

6.00 p.m. display of maps and other documents and video

7.00 p.m. explanation of the plan by Mr. Empsall followed by questions.

All welcome



Abbeydale Road South near Dore Station at the turn of the century.

Public toilet facilities – a target for vandals

The future of public toilets in the City remains uncertain. There have been conflicting reports in the local press indicating that all but two, then all but four of the public toilets in the City are to be closed owing to the financial problem facing the Council.

In response to a telephone call early in the morning of the 28th April, Keith Simmonite, Director of Cleansing Services, said that he had been instructed to draw up a list of toilets to be closed but that he had not yet finalised the details. The list was to be presented to the May meeting of his Committee and confirmed by the June meeting of Council.

With the coming of the warmer weather, residents at the centre of the village are concerned that the toilets and telephone box may again become a gathering place for young people from the village and elsewhere.

It is hoped that the spate of petty vandalism and graffiti experienced last year will not be repeated. However, an incident on 11 April does not bode well; two youths aged 16 and 17 were apprehended by the police near the top of Devonshire Road, one of whom was carrying the 'Telephone' indicator glass from the phone box!

It is hoped that parents will reflect on the concerns for local youngsters expressed in the Autumn 1990 issue of Dore to Door and check just what their children are doing when they "just go up to the village".

Abbeydale Road South

Increasing concern is being expressed by residents and road users about the dangerous traffic conditions on the Dore section of Abbeydale Road South, especially during the rush hours. Many residents have written in vain to the Council or police but apart from the occasional speed trap nothing serious has been done. A petition for traffic lights at the junction with Twentywell Lane is currently circulating, co-ordinated by Pam Round on 368583.

A survey of residents carried out by the local Liberal Democrats, shows that it is the sheer volume of traffic and its speed which is the main problem. Many people find it difficult to cross the road on foot especially older residents. Others have difficulty getting out of their own drives or joining the flow from sideroads. Some way of breaking the flow of traffic is clearly needed, plus a little imagination on the resiting of traffic signs and limits

Scout Gala

The Scouts have again invited the Society to have our stand at the Gala, which will feature a display of the Society's activities.

Members of the Committee will be available to discuss any matters of concern and copies of our publications will be on sale. Copies of some old photographs will be available – price £5.50 for a 10" x 8" print.

We are hoping for fine and warm weather and very much look forward to meeting you on the day.

Dore Motor Show

Year 5 at Dore Junior School is made up of three classes, Mr Scholey's, Mrs Hoyle's and Mrs Addis'. We are working on a computer program called "Cars, Maths in Motion". In connection with this we decided to organise a motor show which will be held on 5th and 6th July in our school grounds. We have regular year meetings so we can make decisions about the show and share information that groups of children have received.

We have written to car dealers inviting them to take part. These are some of them: Hatfields, Lancaster Europa, Gilders, Brook Shaw and many others. We have phoned up the dealers to make appointments and visited the showrooms.

Dore Motor Show has already received newspaper and radio coverage. We hope that it will have more media coverage nearer the time. A couple of television programmes have hinted that they may come as well.

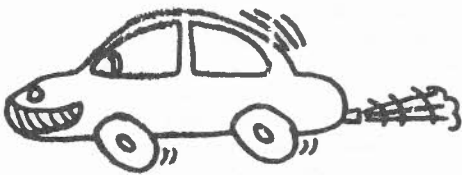
We all had to design a Logo for the show and then we voted on the one we wanted to use. A rubber stamp was made which we have put on all our Motor Show papers. We decided to sell T-Shirts with the logo on them as well.

Dore Parents Association have agreed to be involved. They will probably have side stalls and will be providing all the refreshments. We are hoping to have a bouncy castle and a clown. There will be display stands including one on road safety.

Dore Junior School are sure that it is the first time children have organised such an event and are very excited about it. There will be a raffle with very special prizes donated by the dealers. Tickets will be on sale during both days.

The whole of the Dore community are invited and we hope the day will be a great success.

Written by
Mandy Amos and Susan Porteous



Footnote: The Police have requested that residents of Dore walk to the Motor Show since car parking spaces will be very restricted!!

Subscriptions

With this copy of Dore to Door most people will receive a white leaflet inviting you to subscribe to the Society for 1991.

The annual subscription is £2 and we hope that you will feel able to support the Society in this small way and thereby ensure that we can continue our work of which Dore to Door is a part.

Please return the slip and your payment as soon as possible and certainly before you forget!

If you have already paid a subscription since January 1991 or are one of our life members please accept our thanks and disregard this request.



Cottages in Savage Lane opposite the old school. Richard Moffat.

Spring Meeting

The meeting was held in the Old School on Wednesday, April 24th 1991. The Chairman of the Society, Mr Andrew Bownes, introduced the speaker, Mr Jonathan Tye of Lea Gardens near Matlock. Mr Tye's talk was in several parts - a history of the Gardens, some sixty slides of the plants on show, a short examination of Mr Tye's suitability as a custodian and finally a time for questions.

John Marsden Smedley, the local squire and owner of John Smedley Limited, manufacturers of fine woollen garments, lived in the village of Lea. He was a great plant enthusiast with a particular liking for rhododendrons. Smedley made trial plantings of these in various parts of his estate and found that they flourished in the area which is now Lea Gardens. In 1935, aged sixty eight, John Marsden Smedley began to build his rhododendron garden on that site. On his death in 1959 at the age of ninety two, Smedley had collected 350 varieties of azaleas and rhododendrons on two acres. The estate was divided and sold, the gardens being acquired by Peter and Nancy Tye with Joyce Colyer joining them a year later. The Gardens were first opened to the public in 1960. Jonathan Tye and his wife added their expertise to further develop the Gardens in 1980. Nancy Tye still works in the garden daily with Jonathan, his son and two further helpers. The gardens now extend to 4 acres with 550 different varieties.

The slides shown were of an excellent quality, with many exclamations of delight as vivid colours and delightful vistas flashed onto the screen. Some of the close up pictures of single blooms were exquisite.

Jonathan Tye explained that his experience as a Vulcan pilot in the Royal Air Force, occasional Red Arrow pilot and national motor bike team member were not the

expected background for the custodian of a lovely garden. The slides illustrating these facets of his life were full of interest and certainly dramatic at times. The audience never discovered why Mr Tye had been rescued from Loch Ness by a monk while on a flight from Land's End to John O'Groats in a micro light type of aircraft! During his time with the air-force the speaker had seen many beautiful sights. He was particularly fond of Canada, from where he purchases many rhododendron hybrids.

The questions were many and varied. Several dealt with the practicalities of visits to Lea, such as parking and access for the disabled. The difficulties of balancing the level of facilities against over commercialisation of the garden were explained. Information was given on the breeding of rhododendrons and the different methods of propagation.

Jonathan Tye thanked the Village Society for its donation to the Sherpa charity which he supports. He in turn was thanked by the Chairman for a most interesting and enjoyable evening.

Dore Show

This year Dore Show will be held on Saturday 14th September at the Old Village School. The format will be broadly similar to previous years, with entries in the morning and the Show opening to the public at 2.00 p.m. In the evening the donated exhibits will be auctioned for charity.

The class list and rules will be posted on the notice board from early July and copies will be available from Greens shop on Causeway Head Road.

This year we are particularly keen to see more entries in the floral art and domestic classes so please make a note in your diary and watch out for further information.

If you are able to spare an hour or two to help on the day, please ring 352107.

Planning Applications

Since the last issue of Dore to Door planning applications have been made for Kings Croft and the White House, Vicarage Lane.

At Kings Croft it is proposed to turn the existing building into offices and erect a new building to house offices and a photographic studio. The standard of design is excellent and the new building should fit in well with the existing one; additional parking is to be created and the applicant has indicated that the site will be surrounded by a stone wall to match those to the rear of the property with a new gateway at the bottom of the existing drive.

The White House on Vicarage Lane has been the subject of a number of speculative planning applications over the last year or two and there is outline consent for three dwellings in the garden. The current application is for internal remodelling of the dwelling, the construction of a new double garage, and the erection of a swimming pool with ancillary facilities to the right of the site.

The Village Society committee considered both these applications and found them acceptable.

The Society has not yet received a reply from the Planning Department to its letter expressing concern about the safety of pedestrians and risk of traffic accidents at the Dore Road end of Ashfurlong Lane and the proposal to fence off land adjacent to it.

The Council received a report at its

December 1990 meeting indicating that the Planning Department is failing to decide the majority of planning applications within the statutory 8 week period. The figures are as follows:

36% are dealt with within 8 weeks

22% take up to 13 weeks

42% take over 13 weeks

Scout Gala Fancy Dress Competition

theme World Student Games

Details and entry forms from

Mrs P. Lavender Tel. 620238

Music Festival

Dore & Totley Community Arts Group are organising their first Competitive Festival of Music on Saturday, June 29 at King Egbert School. There will be classes for piano; strings; brass; woodwind and, voice divided into four age groups including open. The adjudicators will include John Aran, Professor of Music at Lancaster University.

Sponsored by Fox's Music, the Festival will begin at 9.30am and run all day including a short winners concert at 6pm with free admission.

Please help to make this event a success by entering or attending. The closing date for entries is Saturday 8th June. Entry forms and further details can be obtained by phoning 360268 or 366212.

Publications

Have you ever come across a "twinter"?

If so, the chances are you are one of the avid readers of the latest Village Society booklet entitled 'Seke in Body but Hole in Mynd'.

Edited by Dr. David Hey of the Sheffield University Department of Continuing Education, the booklet contains an interesting social history of Dore based on the transcription and research into a number of wills and inventories from 1539-1747.

Of the 171 documents transcribed a representative selection of 10 has been chosen by Dr Hey and are included in the booklet; they provide a fascinating insight into village life in those days.

The wills are broadly in the same form as today and the inventories list the estate of the deceased including household goods and animals.

Ann Greaves' inventory for example included "An Old Cow and three Stirks" (a bullock or heifer between 1 and 2 years old) which were together valued at £7 10 00.

The booklet also includes an extract from Burdett's map of Derbyshire showing Dore in the 1760s, a glossary and a complete list of all the documents for those wishing to carry out their own research.

'Seke in Body' is priced at £3 and is available from Greens shop on Causeway Head Road, at the Village Society stand at the Gala or please ring 352107.

Incidentally, if you look on page 57 you will see that a "twinter" is a beast two winters old.



J. S. Jackson & Sons

Limited
PLUMBERS

CENTRAL HEATING ENGINEERS

GAS . OIL . SOLID FUEL
S.A.F.S. and Corgi approved

PERSONAL ATTENTION FROM LOCAL PEOPLE
ESTIMATES FREE

43 TOWNHEAD ROAD, DORE
SHEFFIELD S17 3GD
(0742) 364256 and 304935

Nimble Fingers



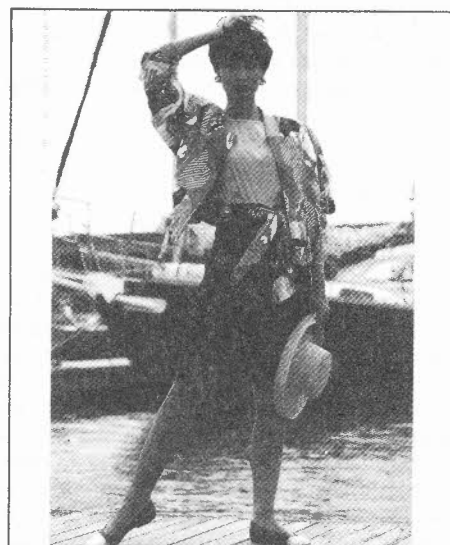
Knitting wools and patterns
Dressmaking fabrics and patterns
Haberdashery
Baby and Children's Wear

Come and see us for expert help.

12a Abbey Lane Sheffield S8 0BL
(near to junction with Chesterfield Road)
Telephone: 746490

Looking Good!

java
LADIES FASHION BOUTIQUE



SUPER SUMMER FASHION

303 Twentywell Lane, Bradway, Sheffield 17.

Tel: (0742) 350594

Also at:

Tanyard Shopping Centre, 240 Bawtry Road, Wickersley, Rotherham.

Tel: (0709) 700866

OPEN 6 DAYS - LATE NIGHT THURSDAY TIL 7pm

Celebrations, Sickness and the Window

Queen Victoria died in January, 1901. On February 13th, 1902 the Vicar and Churchwardens of Dore, unanimously agreed to cost the provision of a new east window for the church to the "Glory of God and in commemoration of Queen Victoria's beneficent reign, and the Coronation of Edward the Seventh". A Dore Church Coronation Memorial Scheme was set up and in May an appeal was made to the parishioners for contributions towards the estimated cost of £400. The June edition of the parish magazine reported that £226-6-0 had been received.

The Coronation of Edward VII and Queen Alexandra was arranged for June 26th 1902. The people of Dore planned to celebrate the day with a short service in the church at one o'clock "according to a special form in use throughout the Empire". There were to be sports on the cricket field, with a "substantial repast at four o'clock in the large tents", followed by a Gala. Every inhabitant of Dore was to receive a ticket and the vicar, the Reverend William R. Gibson expressed the hope that all his parishioners would "avail themselves of the opportunity to be present".

On June 24th, two days before the Coronation, the King was taken ill with severe appendicitis. This required urgent surgery, which was performed by Sir Frederick Treves and was a considerably more serious procedure than would be the case today, being one of the earliest operations for the condition. For two weeks the country anxiously awaited any news of the King.

In July the Vicar reported that:-

"It is well known that great preparations were being made in our parish to ensure a loyal and happy celebration of the day, which long before had been fixed for the Coronation. "Man proposes, but God disposes," and we were all called to realize how soon and how easily our own cherished wishes could be thwarted and disappointed. What we feared most was the weather. Would the sun shine on all our effort and preparation, and crown the day's festivity with brightness? No conditions of weather could have been more exactly suited to the occasion than the glorious Midsummer Day which was given on June 26th; but we had left out of our calculation entirely the possibility of any other source of disappointment. The King on whom all hopes rested, and whom the Nation was prepared to honour, was suddenly struck down by a serious and dangerous disease, the worst fears seemed at once to fill our minds, and all festivities on account of the Coronation were mostly abandoned. So great were the difficulties which had to be met on such short notice, affecting thousands of people, that it was impossible that all decisions should be the same in the matter, and each Central Committee acted according to the necessities of the hour".

The postponement caused a loss of £30 to the Celebration Fund.

Totley had duly held its festivities on June 26th.

"By the kindness of Colonel Hughes, the large canteen, with cooking utensils, plate etc. belonging to the Hallamshire Rifles, at Totley

Bents, and their fields were placed entirely at the use of the Committee for the day. The programme included a hot dinner, at which about 800 guests sat down to an excellent repast. Cricket Matches and Athletic Sports followed, and the day ended with a display of fireworks".

The Coronation was finally held in Westminster Abbey on August 9th, 1902. It was a quieter affair than had been originally planned as many of the foreign dignitaries, having travelled to London in June, did not make a second journey.

The Dore Coronation festivities passed off successfully on Saturday, August 9th. There was maypole dancing, entertainment by the children, sports and a bonfire with fireworks.

"The National Anthem was sung and played at intervals during the day, and our Village Band excelled themselves throughout the proceedings. An excellent programme, intended to form a Souvenir of the important event, was printed, commencing with the planting of a tree on the Village Green, followed immediately by an especial Service for the Coronation Day, held in the Church, which was crowded for the occasion."

The King spent a period of recuperation on the Royal Yacht. On October 25th, 1902 the Royal couple processed through South London and on the following day returned in state to St Pauls to give thanks for the King's return to health.

The memorial window in Dore Church was dedicated by the Venerable Archdeacon Eyre, Vicar of Sheffield, on Saturday February 21st 1903. In his sermon he observed that the Coronation of the King "was attended with a most marked intervention of Divine Providence, which seemed to teach us that although in our own expectations we may be disappointed, yet when God has a lesson to teach the nation, he teaches in mercy, for in this instance one of the most dangerous diseases had been overcome, and not only a valuable life was spared, but the sufferer was restored to health again, in answer to prayers".

Edward VII died of bronchitis in 1910 at the age of 69.

Letter

Dear Editor,

A kind friend, I know not who, put the Spring edition of "Dore to Door" through my letter box and I did enjoy it very much indeed. I would like to subscribe to further copies.

I was especially interested in the article on "The Dore Dramatic Society" as I appeared in a dozen or so productions with them. I even directed two productions there and had House Full notices outside every night. However, you mention in the piece "Geoffrey Tomlinson can still be seen in the occasional small part on T.V.!" Well, I recently appeared in a "Basil Brush Show" as a "Jeti" and you cannot get much bigger than that!

In fact I have been a professional actor for over forty years, even whilst with the D.D.S. I am now a life member of our union Equity.

I began in Radio, playing leading parts, and still do. For twenty years I was a principal with the Village Players in Great Hucklow ruled-over by that benevolent dictator Dr L Du Garde Peach, having parts specially written for me by him. I have played leading

Abbeydale Hall Centre

Students at Abbeydale Hall (Norton College) are asked to note that this year the enrolment procedure for classes starting in September for all Local Education Authority Courses (LEA) has changed.

The first day for enrolment at Abbeydale Hall is Thursday June 13th from 11.00am to 7.00pm, then subsequent Thursdays until 11th July. Enrolment will then re-open from 5th September. A wide range of courses is available covering modern languages, keep fit, arts and crafts, maths, literature, cookery and first aid. Further details are available on tel: 624200/372741.

Please note that all courses provided by the Workers Educational Authority starting in September will enrol on Wednesday, 11th September at 2.00pm and 7.30pm.



Geoff Tomlinson as Lord Longbridge in 'Till we meet again' ITV, with a dog called Noggin who only played a small part!

parts on T.V. films, radio, and still do. I still do photo and fashion modelling, at 65 I must be the oldest model still on the cat walk, which is an extension of theatre after all. I did my "One man show" over seventy times last year, four times in Dore!

I am also a freelance cartoonist for several magazines. The DIGET cartoon in The Totley Independent is by me. I know of only one director for T.V. who lives in Dore, but there maybe more! I should hate for these to think "Poor old Geoff, he's only playing small parts and I was going to offer him Lear!!" (In which I played with Lord Olivier by the way! he played Lear!) I played a small part!!

Can you redress the balance a little bit and do away with the idea that I am sti!! only "playing small parts," for after 45 years in the business I am as active as ever. I would appreciate it.

D Geoff Tomlinson

Dore School of Theatre Dance

The first Tuesday in September is a milestone and an achievement for us. It marks 30 years to the day that Dore School of Theatre Dance began. What a lot has happened since that Tuesday evening in 1961 when Peter Hawksley sat at the piano, and I stood in tights and leotard waiting to see if anyone would arrive.

Peter was there out of curiosity more than anything. I was there with my first Associate qualification to the Dance Teachers Association and a 16 year olds burning ambition to start a dancing school.

12 children arrived and were duly enrolled as pupils. At the beginning of December we had our first show. It took the form of an open night, to demonstrate to parents class work during the first half, and after tea and biscuits at the interval the second half took the form of a show with costumes and make up.

Over the last 30 years there are many things to be proud of, and ex pupils all over the world who keep in touch with regards to their aims and achievements. For example Sheena Uttley ex Bluebelle top model and now an agent in Hong Kong. Christine Pedlar is a dancer in Las Vegas, Phillipa Cubison the principal of the English Dancing School in Stavanger, Norway. Judith Kay, dancer and T.V personality in Italy, Cressida Carre, Northern Ballet now dancing in England. Michelle Firth, Hammond Ballet School, has danced all over the world, now a theatrical agent in England. Jacqui Cutts, Middlesex Poly is now a teacher using dance as a means

of communication with children of multi cultural backgrounds. Beverly Quinn, full time model. Julie Fulford, full Associate of the International Dance Teachers Association working towards a Fellowship degree with me at Dore School of Theatre Dance. All this alongside the many children who have enjoyed a little magic at the Church Hall each week.

30 years on I am now an examiner for the I.D.T.A. and a choreographer of fashion shows at home and abroad. Working in such wonderful places as the Cirque Royal Brussels, The Palais de Festival Cannes, The Mermaid Theatre London, and Chatsworth House, to name but a few.

This year the school is looking forward to examinations in May and July. A show at the Royalty Theatre London in September and of course our 30th Show on the 5th, 6th, and 7th December 1991 at the Church hall.

Bobbie Drakeford

Seasonal snaps please

Did you take any photographs of Dore or its surroundings during the winter?

If you did we would be interested in seeing the outcome as we are now looking for material for the 1991 Village Society Christmas card.

Please send your prints (which will be returned) to Limpits Cottage, Dore, S17 3DT, or leave them at Greens shop on Causeway Head Road.

DORE VILLAGE SOCIETY

The objective of the Society is to foster the protection and enhancement of the local environment and amenities within Dore, encourage a spirit of community and record its historic development.

Chairman

Mr. A. C. Bownes
Limpits Cottage 352107

Secretary

Mrs G Farnsworth 350609
11 Rushley Avenue

Treasurer

Mr. C. Myers 365658
1 Rushley Avenue

Committee

Mr. J. R. Baker	369025
Mrs. E. C. Bownes	352107
Mr. L. J. Conway (Planning)	361189
Mr. D. Dean	368082
Mr. P. S. Dutfield	365850
Mr. M. Hennessey	366632
Mr. J. W. Laver	361286
Mrs. C. Veal	368437
Mrs. S. Wood	366424

DORE GRILL RESTAURANT

TABLE D'HOTE £10.50

Mon. - Fri.

Soup of the Day
Marinated Sweet Herring with Salad
Garni
Deep Fried Mussels served with Lemon
Mayonnaise
Melon and Prawn Cocktail
Ravioli Al Sugo
Ham and Mushroom Pancake

Fillet of Pork Sweet and Sour
Goujons of Plaice with a Lemon Sauce
Mixed Grill
Best End of Lamb with Mint Sauce
Rump Steak with Boursin
Sauted Chicken A La Creme served on
a bed of Rice
Dore Grill Pancake filled with
Mushrooms, Spinach, Almonds and
Cream, Glazed with Cheese
Vegetables and Potatoes of the Day

Sweet Trolley
Strawberries
- when available extra £1.50

Coffee

Joe and Manuel welcome you to Dore Grill
Restaurant offering the finest English and
Continental Cuisine.

Full Table d'Hote and A La Carte menus available

Lunches served Monday to Friday 12.00-2.30pm

Evening Meals served Monday to Saturday
6.00-10.30pm

Saturday - Special Table D'Hote and A La Carte

Sunday Lunch 12.00-3pm

SUNDAY LUNCH £8.75

Melon & Prawn Cocktail	Roast Loin of Pork
Soup of the Day	Roast Leg of English Lamb
Hot Smoked Mackerel served with Horseradish Sauce	Dore Grill Pancake
Baked Grapefruit Jamaica	Sauted Chicken à la Creme
Avocado Madras	Vegetables & Potatoes of the Day
Fruit Juice	***
***	Sweet Trolley
Roast Sirloin of Beef	Strawberries - when available extra £1.50
Goujons of Plaice	Coffee

36 Church Lane, Dore, Sheffield 17
Telephone (0742) 620035

LUNCH TIME MENU £6.75

Soup of the Day
Yorkshire Pudding with Onion Gravy
Fruit Juices
Melon & Pineapple Cocktail
Rollmop Herring Salad

Loin of Pork with Horseradish White
Wine & Cream Sauce

6 oz. Rump Steak Garnish
Chicken & Mushroom Pancake glazed
with Cheese

Dish of the Day

Deep Fried or Grilled Cod Fillet
Cold Assorted Meats with Fresh Salad

Vegetable Pancake
Vegetables & Potatoes of the Day

Sweet Trolley
Strawberries
- when available extra £1.50

Coffee

James Turver

In 1822 at the time of the enclosure of the common lands in Dore, John Frith received an allotment of approximately 70 acres. This included fields to the west of Causeway Head Road stretching as far as New Field Lane and three fields on the far side of New Field Lane taking in part of Wag Wood. John Frith and his family lived in the farmhouse, which along with its associated buildings, was sited in the area where Causeway Gardens and Causeway Glade now stand. It appears likely that the land was later farmed by Joseph Flint and his sons, who appear in the 1881 census as the residents at Causeway Head.

Before the turn of the century the farm had changed hands again. A Sheffield grocer called James Turver built a large stone house on the site, which he named Heatherlea. The house was in the Victorian style with a bowling green in front and a pleasant pond. The farm buildings remained, with stables and a cowshed forming a courtyard with a wash-house and other out buildings.

At this time there were no other buildings on this side of Causeway Head Road before its junction with High Street. The family kept fowl in the fields in addition to the other farm animals. James Turver was assisted in the management of the farm by his son in law, Shirley Arthur Unwin, who had married his daughter Gertrude in Dore Parish Church on April 6th, 1904. Shirley Arthur was the fourth son of John Unwin of Moorside Farm.

While living at Heatherlea, James Turver bought the row of old stone cottages on High Street, adjacent to the Devonshire Arms. His purchase included the bakehouse and smithy situated up the narrow lane to the side of the public house. At the junction of High Street and Causeway Head Road, Turver built a shop and a terrace of stone houses bearing the name Devonshire Terrace. James Turver managed his new shop, which was a general grocers selling all the usual commodities in addition to freshly baked items prepared in the bakehouse by Wilf Watchorn. The groceries were delivered to the surrounding areas on a horse drawn dray.

In addition to his farming, retail and property interests, James Turver was a member of the Lord Fitzwilliam Hunt.



Fitzwilliam had been the Lord of the Manor of Ecclesall but had decided to cease holding court in 1866, in recognition of the growing powers of the Borough Council of Sheffield. In 1909 part of his land was given to the City and now forms Millhouses Park.

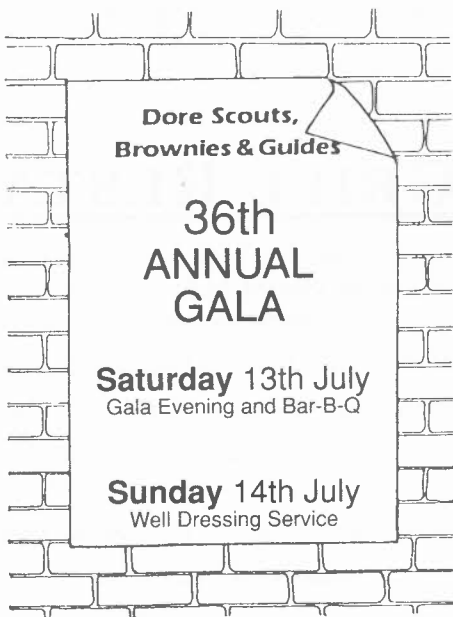
When James retired to a villa on Leyfield Road, his son-in-law Shirley Arthur Unwin continued to manage the shop. Heatherlea was sold to a solicitor called Vickers and renamed Causeway Head House. It changed

hands again in 1940 and in 1970 the site was sold to Hassall Homes. The house and the majority of the out buildings were demolished to allow for the Causeway Glade and Gardens development. Only a stable block now remains, which was converted into the house which stands at the entrance to Causeway Glade.

Turvers Store was managed by James Turver's grand daughter and her husband in the mid 1930's. After changing hands again to be part of the Shentalls chain, the shop was converted into a private dwelling house in 1976. (see picture on the front pagethe Spring 1991 issue).

Shentalls Shop

In the spring issue we published a 1940s picture of Shentalls Grocers Shop, now a house, on the corner of High Street and Causeway Head Road. In addition to the Manager Richard Hill on the extreme right of the picture Mrs Gamble has identified the young man on the left as Jim Kirbyshaw who moved on to become a porter at the Hallamshire. The young lass next to Mr Hill is Ivy Siddall, now Mrs Murray a still young 80 year old. She still remembers how busy they were in those days as everything had to be weighed out by hand and how it was always 'service with a smile'.



Waterways Festival

Opening in the same day as the Lord Mayors Parade on Saturday 29th June, Sheffield Waterways Festival will continue through Saturday and Sunday with lots of attractions.

These will include more than 125 boats of various kinds from all over the country, and a wide range of waterways based features for all ages. The "Blue Helmets" parachute team will be "dropping in", and there will also be a series of other spectacular events and displays including ascents by a hot air balloon.

Entry to the site at East End Park, Attercliffe Common, and to the Trade and Craft Fair will be free. For detailed times and full information on the programme tel Doncaster (0302) 841619.

Wheely-Bins

This spring the snowdrops and crocuses were closely followed by the wheeled bins. Are they to be a permanent feature of our gardens?

The council has introduced this new system of refuse collection for a six month period which began early in March. We understand that the scheme will be evaluated by means of a pre-paid questionnaire.

The wheely-bins certainly have some obvious benefits - the accommodation of garden refuse with the consequent reduction in smoky garden fires immediately springs to mind. On the other hand they can hardly be described as visually attractive and could be a handy guide to the opportunistic thief.

As a group closely monitoring the effects of any changes affecting the local environment, we would be glad to hear your views, in order to be able to add weight to any responses being made to the council.

Tennis Notes

Tennis locally used to be a Summer game, played largely as a friendly social activity between families and single persons wishing to make new friends. Fortunately this still happens today in a social section of a tennis club which now has a competitive section (Tournament matches) and enthusiastic veterans, together with a junior section.

Normally, juniors start from about 6 years old with "Short Tennis" played on a court the size of a badminton court or roughly the tennis service court, using soft sponge balls and shorter rackets. The Coach will introduce this as the "Coca Cola Awards 1-6", an easy way to gradually acquire the skill in preparation for the game on a full size court. In other cases potential players decide to start later - maybe when leaving school and with the right guidance make progress on a full size court from the start. My oldest pupil started when 50 and eventually played in matches!

Playing on modern courts is much more pleasurable, having a predictable bounce and clean surface where whites remain white and balls appear more distinct. Now we have too new indoor courts "INDORE" at Abbeydale Park with a carpet to play on - no sun - no rain - no wind - no excuses for not sampling such luxury to keep fit the nicest possible way.

Jim Biggins, L.T.A. P.T.C.A.

Back Issues

We have a number of back issues of Dore to Door for sale with proceeds going towards Society funds. Copies back to Spring 1986 are available although we have more of some issues than others.

Individual copies are available at £1.50 or £5 for a complete year.

They will be sold on a first come first served basis - if you want any copies please ring 352107 in the early evening.

**Deadline for Autumn
Diary entries
10th August 1991**

Farming Notes

Anyone who objected to filling in their census form recently had better not consider being a farmer.

Every June the annual agricultural census comes round wanting to know what livestock and crops you're growing. There are about 200 questions asking everything you can think of, along with the box at the end that says 'other' just in case you're growing something they've never heard of.

On top of the annual census there are now a plethora of other smaller ones. In December there's the turkey census. This has only been going a few years. Most farmers get their turkeys from a few large turkey breeders in August as day old poults and fatten them up for Christmas, so on the June census no turkeys are registered. After about 50 years some bright spark in Whitehall must have suddenly realised that according to their records there were no turkeys in the country and yet 10 million are killed every Christmas.

We also get numerous pig census forms. Pigs breed rapidly. Five litters in two years with 10 in a litter, so lots of forms are needed, though why it's so vital to know about all these pigs is a mystery.

Cattle, being slow coaches at breeding, don't get their own forms, but on the annual form they are broken down by age and sex, as they say, beef and dairy breeds and all their ages from calves to geriatrics.

There is also a separate machinery census that comes round sometimes. When you see some of the ancient pieces of equipment that farmers are so good at keeping going long past their natural lifespan some of these forms must make interesting reading in the 'other' box.

Anybody employing labour needs a wheelbarrow to shift the forms for that privilege. Although these come from the Inland Revenue, not the agricultural census. – they want to know as well. The Revenue send round the same weight of documents to a farmer employing one person as they do to a firm with five hundred.

On the crops side, there's been a minor victory for the traditionalists. They want to know the area of each variety of crop grown. This was always in acres, of course, until about 10 years ago they decided we should go metric and fill the form in – in hectares. They were good enough to give a multiplying factor to about 5 decimal places. Most people ignored this and carried on in acres. After all, the fields are still the same size. It's not like when they take your old money away and give you a fresh lot. There's nothing you can do about that, but a ten acre field stays ten acres whether they like it or not.

So after years they've given up on that one and provided a box for acres. In a few years someone may realise that a man's stride could be a useful unit of length. It could give rise to a whole system.

R. Farnsworth

Dore Map

The Dore Village Society is planning to produce a new map of the village showing amongst other things the extent of the conservation area and the site of listed or interesting buildings. If you have any cartographic or drawing skills and would be interested in helping with this project please phone 352107 any evening.

King Egbert School

Charity work is a constant feature in the school. We not only have large scale events like Red Nose Day which raised £600 but also groups of students often raise funds on their own. Recently Sixth Form students for example raised £115 for the NCPCC and £89 for LEPR.

Bringing charity nearer home, we have just set up a small working group to look at ways of enlarging and improving the stock of books in the library and increasing the level of assistance. We do have some parents helpers at present but we would welcome any adults with an interest, both to help run the library or catalogue books.

On a different front, you may have seen recently coverage in the national press of research into school bullying being carried out at Sheffield University. Part of the research has involved carrying out surveys in a sample of secondary schools which included King Egberts. The results of the survey have given us cause to be pleased with the schools firm stand on bullying, as they show us having less bullying than the average secondary school and also fewer pupils who bully others than the average.

Finally were pleased when the school was asked to produce a design for T shirts by Sheffield Cleansing Dept, on the theme of Keep Sheffield Tidy. A competition amongst Year 10 pupils was won by Laura Cook and her design will shortly go into production.

Water Mills of Dore. Unfortunately we are unable to reproduce the second part of this article in this issue due to shortage of space.

DORE BRANCH

FOR SALE

ELR

Eadon Lockwood & Riddle

“IN A CLASS OF
THEIR OWN”

33 TOWNHEAD ROAD, SHEFFIELD S17 3GD. Tel: 362420

Diary – Summer 1991

MAY

20-25 **Craft Fair.** Totley Library, Demonstrations and Displays all week. See library notice board or telephone 363067.

JUNE

- 4 **"White-faced Woodlanders"** Mrs S. Rowan. Methodist Tuesday Group. Methodist Hall. 7.45pm.
- 11 **"Owls" - a talk.** Christ Church Ladies Group. Church Hall. 7.45pm. All welcome.
- 11 **"Lead mining in Derbyshire"** Mr Harry Parker. Mercia T.G. Methodist Church. 9.30am Members only.
- 12 **"Owl Lady"** Mrs A. Owen. Dore Evening T.G. Old School 7.30pm.
- 15 **Book/Tape/Record Sale** King Egbert School Assn. Dore Old School 10.30am onwards.
- 18 **Travel Slides.** Andy Firth. Travel Guide. Methodist Tuesday Group. Methodist Hall. 7.45pm.
- 19 **Open Evening on Unitary Development Plan.** Dore Village Society, Old Village School, 6-8pm (see article).
- 22 **Garden Party** Cheshire Home, Mickley Lane, 2pm.
- 22 **Concert.** Dore Male Voice Choir, Ecclesall Church (in aid of Life Boat Ass'n) 7pm.
- 26 **Councillors' Surgery.** Totley Library 5.30 to 6.30pm.
- 29 **Competitive Music Festival.** Dore & Totley Community Arts Assn, King Egbert School 9-5pm. Winners' Concert 6pm with free admission.

JULY

- 2 **Hearing Dogs for the Deaf.** Mrs Ashworth. Methodist Tuesday Group, Methodist Hall, 7.45pm.
- 5-6 **Dore Motor Show** organised by Dore Junior School, Dore School. 10am to 4pm (see article). Incorporating Dore Parents' Association Summer Fair on the 6th.
- 8 **Concert** – Dore Male Voice Choir with Bury Girls' Grammar School Choir. Free Trade Hall, Manchester. 7.30pm.
- 9 **Travellers' Tales** – China, India. Mrs H. W. Favell. Mercia T.G. Methodist Hall, 9.30pm. Members only.
- 9 **Walk and Supper,** Methodist Tuesday Group.
- 9 **Fashion Show** by Clothing Warehouse, Christ Church Ladies Group, Church Hall. 7.45pm. 50p. All welcome.
- 10 **Music Evening.** King Egbert School Ass'n, King Egbert School 7.30pm. Wine and strawberries. Tickets 369931.
- 10 **Birthday Evening.** Dore Evening T.G. Old School. 7.30pm.
- 13 **Dore Male Voice Choir.** Llangollen Festival and Evening Concert. Details – D. Evans 302691.
- 13 **Scout Gala and Well Dressing.** See posters and programme. Parade starts 2.15pm, Gala 2.30pm.
- 14 **Well Dressing Service.** Village Green 3pm.
- 14 **Family Sports Day** in aid of St Luke's Hospice, Totley Bents Recreation Field. For details Tel. 369217.

SEPTEMBER

- 10 **Hormone Replacement Therapy.** Mr. J. Patterson, Christ Church Ladies Group, Church Hall, 7.45pm. All welcome.
- 11 **Whirlow Farm Trust** – Mr Bill Kirby. Evening T.G. Old School. 7.30pm.
- 14 **Dore Show.** Old School. See article.

Every Thursday. Open Door. United Reformed Church. Totley Brook Road. 10am to 12 noon. All welcome.

Every Saturday. Coffee Morning. Dore Methodist Church. 10am-12 noon. All welcome.

Every Saturday. Venture Scout Car Wash Service. Scout H.Q., Rushley Road. £1 including coffee. 10am to 12 noon.

Second Saturday each month. Scout Waste Paper Collection. Recreation Ground Car Park. Townhead Road. 9.30 to 11.30am.

Bottle Bank. Scout H.Q. Rushley Road.

For your events in September, October, November, please contact Stella Wood on 366424. Deadline August 10th.

Totley Hall Farm Produce

at the end of Totley Hall Lane
Open Monday to Saturday
10.00am to 8pm

EXPECTED OPENING....

end June/early July



Tel. 364761

to confirm availability and prices



Eric Grant

your authorised



HOOVER SERVICE CENTRE

- * South Yorkshire's largest range of genuine spares for sale over the counter.
- * Competitive prices on all new Cleaners, Washing Machines and Dishwashers.
- * Fully guaranteed Repairs Service.
- * Open SIX full days.

A BUSINESS BUILT ON RECOMMENDATIONS

747 Abbeydale Road, SHEFFIELD (Near TSB Bank)
Telephone 550519 & 552233

RICHARD GREAVE ELECTRICIAN

For all your electrical requirements



160 Springfield Road, Sheffield S7 2GJ
Telephone :- Sheffield 352813

Brian Hill & Son

LOCAL CRAFTSMEN WOODWORKERS
Est 1970

Specialists in Antique Repair,
Restoration and French Polishing.
Fitted Kitchen and Bedroom
Furniture

All your joinery needs
Estimates free

47 Rushley Drive, Dore
Sheffield S17 3EL
(0742) 367384 & 307798

