

# DORE to DOOR

DORE VILLAGE SOCIETY

No. 31 AUTUMN 1993

ISSN 0965-8912

## Sheffield Marathon 93

On 27 June for the first time, the Sheffield Marathon was routed through Dore, owing to the severe disruption to the City Centre caused by Supertram and other major roadworks. The stretch through Dore included Abbeydale Road South, Furniss Avenue, Church Lane/High Street and Rushley Road/Limb Lane.

A hot sunny day greeted the runners many of whom found the ascent of Furniss Avenue a strenuous challenge. The level run through the village centre came as something of a relief as there were feeding and Red Cross facilities.

The atmosphere in the village was carnival like with a barbeque and tables with umbrellas at the Devonshire Arms and with appreciative crowds lining the route. The roads were closed between about 10.30am and 3.30 pm which contributed to the atmosphere but it was a pity the bunting for Gala day wasn't up in time.

Afterwards a number of competitors said how much they appreciated the reception and encouragement they received from the people of Dore.

## Dore Show 1993

This year's show will take place on Saturday 11th September in the Old School and Methodist Church Halls.

Once again the number of classes has increased and a full list is included in this issue. Refreshments will be available, while the Stannington Brass Band and the Sheffield City Morris Men will be on hand to entertain everyone. The model railway layout in the Old School will be open and there will be even more side stalls from local organisations.

The Annual Show has become a real village occasion. Please come along and enjoy yourself, see the results of other people's efforts, or better still enter your own exhibits.

The halls will be open to receive exhibits from 9.00-10.30am on the morning of the Show. Entries for the Flower Arranging classes must be notified by the preceding Friday evening. Full details of the rules and regulations are on the show schedules available from Green's on Causewayhead Road.

In the interests of road safety, Sheffield City Council has been asked to close the top end of Savage Lane, ie above Vicarage Lane, for the afternoon. The Show Committee would like to apologise in advance for any inconvenience this may cause to motorists.



Costa del Dore. Runners scorching their way up the High Street in this year's Sheffield Marathon.

## DORE VILLAGE SOCIETY

AUTUMN MEETING  
8.00pm

Wednesday 20 October 1993

Old Village School

"Peakland Rockscapes"

An illustrated talk on the  
geology of the Peak District by  
Alan Faulkner Taylor FRPS

## Dore Heritage Project

In our summer 92 edition we announced the launch of a Dore Heritage Project to refurbish the barn behind the Devonshire Arms and make it available to the local community and as a base for a local history collection. Regrettably after more than a year's negotiation, the Dore Village Society has now been told by the brewery that they have found an operational use for the building and that it will not therefore be available to the Society.

While we wait with some trepidation to see what this use is, the loss of this building is a significant setback to our search for premises to house the growing collection of information on the village's past history. If anyone can offer accommodation or suggest alternative possibilities please contact John Baker on 369025 or Andrew Bownes on 352107.

## Special Olympics

The fourth National Summer Special Olympics Games take place in Sheffield from 20-26 August. Catering for people with learning disabilities, there will be competitions in athletics, Gymnastics, basketball, powerlifting, table tennis and much more. There will also be "sports clinics" for competitors and local Special Needs groups.

A group from Fairthorn and The Elms will be taking part and on behalf of everyone in Dore we wish them well in their endeavours.

## News in brief

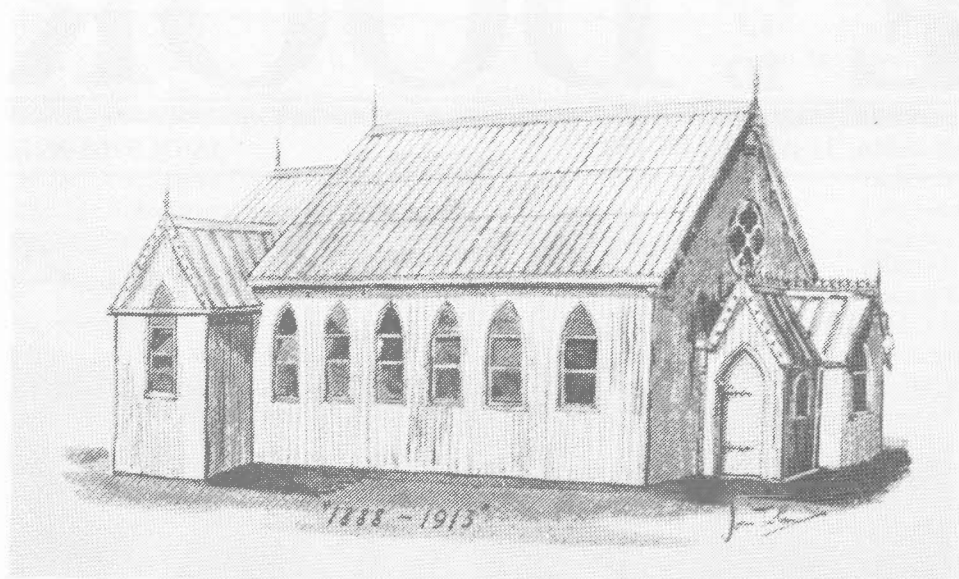
**Garden Rubbish** - We have received requests for garden rubbish not to be dumped at the side of footpaths in Bushey Wood etc.

Although it is sometime "only nettles" where such rubbish is dumped, people prefer to see living wild plants rather than decomposing rubbish - and such dumping is an offence.

**St. John Boundary Stone** - A brass plaque, kindly donated by John Eyre, of Eyre and Baxter, of Derbyshire Lane, has been fixed to the parish boundary stone at the junction of Ashfurlong Road and Burlington Road. Geoff Bly, who, with the help of John Farnsworth, replaced the stone on this site, has fixed the plaque, on which is copied the original wording of 1877.

INSIDE: Letters • Farming Notes • Dore Show Classes • Keep in Shape • A La Carte  
News in Brief • Autumn Diary • Bull Baiting • Bushey Wood

## DORE & TOTLEY UNION CHURCH



### The Tin Tab

The "old tin tab" as it was affectionately known, was a familiar sight to many people of both Dore and Totley, up until 1929. It belonged to Dore and Totley Union Church – now the United Reformed Church on Totley Brook Road.

Dore Union roots go back to the spring of 1888 when six congregationalist friends – John Calvert, Thomas Oates, Samuel Trevethick, George Tucker and Edward Hounam met under Frederick Dieroff's chairmanship at "The Laurels" on Dore Road, with a view to founding a new Christian movement in the area.

Dore was at that time, rapidly expanding, thanks to the pioneering spirit of the Sheffield and Chesterfield Railway which opened a station at the bottom of Twentywell Lane in 1872, in order to serve the new estates planned for Totley Brook and Dore Road. Our six zealots from Queen Street and Attercliffe Mount Zion congregational churches perceived a need for a new free church in the area for the railway borne population – the nearest higherto being the Wesley Reform chapel at Beauchief.

Their enthusiasm was such that they were soon able to organise public services of worship in a school room rented from Mrs Shrubsole in the Licensed Victuallers premises.

The challenge provided by the founding six was taken up quickly by more local residents and an approach made to rent land from what had by then become the Midland Railway, close to Dore Station.

Agreement was reached with the General manager at Derby in 1889, the railway company pointing out, in view of their pre-occupation with planning a new curve towards Chinley, that the land may be "urgently required for Railway purposes... but they would otherwise endeavour not to disturb the congregation".

Enter the tin tabernacle, or iron church. The church executive had been seeking to acquire one – preferably at the sensible sort of price one might expect from free church men and Yorkshire men into the bargain, that would seat approximately 150 people. They

were eminently successful with a "neat iron church" purchased second hand from Isaac Dixon and triumphantly transported to Abbeydale Road.

So began a long association between the tin tabernacle and unfailingly enthusiastic members of Dore and Totley Union. The long suffering, ever forgiving worshippers challenged by draughts, leaks, noise, choking fumes, wilfully malicious gusts of rebellious smoke from the iron stove and the piercing shriek of the Midland Railway south-bound expresses endeavouring to build up speed as the came up past the station.

When it rained, the thunderous pounding on the tin roof caused preachers to abandon the sermon in favour of hymn singing. Visiting preachers today may still marvel at the power of the hymn singing fervour they encounter, little knowing what magnificent heritage lies behind the resonant voices.

Equally exciting to the imagination, are tales of the church secretary, Mr Hedley

Parker, dashing furiously out from contemplative prayer to shake his first at the gleeful driver of a maroon liverid Midland Railway locomotive, as he opened up the throttle and whistle simultaneously to signal the triumph of man and machine over the "meek and mild".

Did the Fat Controller receive a complaint about the misbehaviour of his engines? It seems, from looking at church records, that he did frequently. And the company "urged care upon its drivers and firemen".

Like Abreaham, the free church worshippers uprooted in 1908 (following the Harvest Festival), and, taking their tin tabernacle with them, moved to a new plot of land on Totley Brook Road, still within earshot of the ever expanding railway.

Evelyn Nicholls, who now lives at Green Oak View, remembers the "old tin tab" being moved physically on a bogey to its new site. The chapel was lovingly repainted, matting was laid in the aisle, radiators replaced the pot bellied stove and everyone settled down to a new life on t he frontiers of Totley.

But betrayal was in the air! A new permanent building worthy of the new location and still growing congregation was being considered. Competitive designs were invited and finally, in 1913, the present church of Derbyshire grit stone was built and opened with much ceremony.

The tin tab became the church hall on an adjoining plot of land.

Nostalgic back-stage reminiscences within the Dramatic Society provide a colourful picture of the ambitious productions undertaken by gas light. Scenery, artfully crafted from wood and dragged down from people's outhouses, was assembled with iron brackets to carry the individual lamps of the footlights.

The cast learnt, with bitter experience, when precisely to raise their voices each night, to join in battle with the hissing, panting trains struggling up the incline to Totley tunnel and the summit somewhere under the dark peak.

Bantering audiences and earnest amateur actors enthusiastically joined together in self-made entertainment.

The Reverend Wesley Green, minister of Dore Union from 1920 until 1929 and an ardent thesbian, was well-known for his habit of placing prompt cards in strategic places around the stage – and the inevitable occasion when he precipitated the entire cast from the middle of Act II into the latter part of Act III.

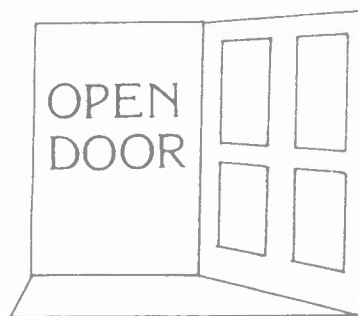
But the thunderous rain on the roof and the thunderous applause of the audiences within were an unequal contest that ultimately could only have one lamentable ending.

Plans were made for a permanent church hall, with mullion windows and porch, with facings of Derbyshire grit stone, to stand beside the sanctuary. The days of the tin tab were sadly numbered.

Rather fittingly, in 1929, the tabernacle that came to Dore and Totley in consequence of the evangelistic fervour of half a dozen non-conformists from the east side of Sheffield, was carried across the city to the suburbs of Hillsborough in order to be a mission hall serving the needs of a new generation of evangelists.

*Richard Moffat*

Please call in at



for a 'cuppa', a chat  
and help if you need  
every Thurs. 10-noon  
Church Hall, Totley  
Brook Road.

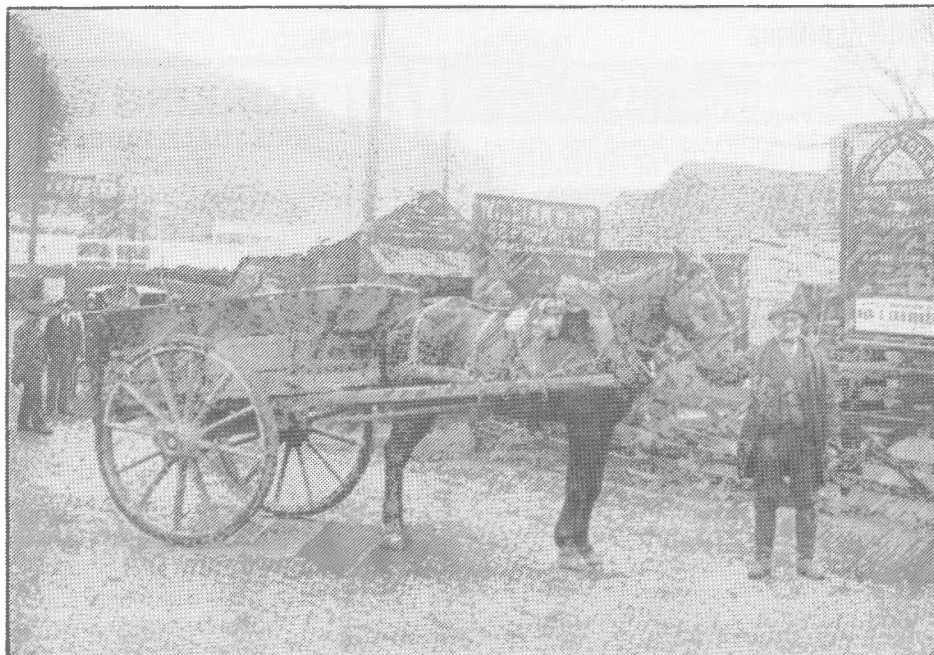
## William Wint

The photograph on this page is of William Wint, cab-proprietor, outside his premises in front of Dore Station. Mr Wint took over the business from his father, also William, and for over 42 years was one of the best known men in Dore. The original photograph belongs to Mrs Marjorie Shears of Beauchief, who is a niece of the younger William and granddaughter of the elder.

The centre sign reads: "WILLIAM WINT; CAB PROPRIETOR; Cabs, Landau & Waggonettes; Tolley Rise". A Landau is just visible behind the waggon with the platform and footbridge of Dore Station beyond. The date of the photograph is not known but there are some clues.

The sign on the right relates to the Dore & Tolley United Reformed Church and its' Tin Tab (covered separately). It reads:

"Dore and Tolley Union Church. Sunday Services; Morning 10.30, Evening 6.15, Sunday School afternoon 2.30. Registered for solemnisation of Marriages. Sunday December 14, Rev C Crabtree".



William Wint, Cab-proprietor in front of his premises at Dore Station, pre 1908.

## Abbeydale Hall

The enrolment dates for the college courses running at Sheffield College's Abbeydale Hall Centre are as follows:

Wednesday 8th September, Thursday 9th September, Monday 13th September, 2.00pm-7.30pm.

The centre is again offering a range of language courses, including languages for Business, at various levels which may be

learned either for recreation or in order to obtain a qualification.

Other courses cover craft work, floristry, drawing, keep fit, assertiveness, writing, archeology and ballet and tap.

For further information see the Sheffield College "Choices" brochure or contact: Jonathan Higgins/Ian Horsfield at Abbeydale Hall, Tel. 620244

Workers' Educational Association (WEA). The enrolment for the courses arranged by the

WEA at Abbeydale Hall are as follows:

Daytime courses 2.00pm Wednesday 15th September

Evening courses 7.30pm Wednesday 15th September

A range of courses covering gardening, art, music, philosophy, natural history literature and geology is being offered. For further details please contact Ian Horsfield at Abbeydale Hall, tel. 620244.

## What's so special about Israel?

Did you know that Israel is one reason why YOU can trust the Bible as a guide for life?

To find out more:-

Come to 3 Audio Visual presentations in

**Dore Junior School, Furniss Avenue,**

at 7.30pm (God Willing) on three Tuesdays:

September 21st "**Flightpath to Gods New World**"

September 28th "**Survival Plan for Planet Earth**"

October 5th "**What's so special about Israel?**"

You will be very welcome

**Arranged by the Christadelphians**

## P · L · U · S :: O · N · E

YOUR PARTNERS IN TRAVEL

TRAVEL INSURANCE - FOREIGN CURRENCY

SCHEDULED AND CHARTER FLIGHTS - FERRIES

HOLIDAY PACKAGES ALL AREAS - CAR HIRE

SPECIALIST ADVICE FOR EVERY ISLAND IN THE CARIBBEAN PHONE

0742 621515 9am - 4.30pm MONDAY TO FRIDAY 9am - 2pm

SATURDAY OR MOBILE 0831 211648 ANY DAY 8am - 10pm

41 BASLOW ROAD, TOTLEY RISE, SHEFFIELD S17 44DL



Enjoy 6 handpulled Real Ales

Pulled through Sheffield's Oldest Handpumps

Enjoy a Meal in the Ladies Spring Restaurant

Savour the atmosphere of the  
126 year old Railway Station

Choose from the Specialised Wines supplied by local Wine Merchants Wineschoppen

Dore Junction Provides a unique ambience for eating and drinking, amidst the fine decor with prints and photos relating to the Railway and Local Scenes

Fiercely independent and proud of it, the owners, management and staff at Dore aim to do all in their power to satisfy the residents of Dore.

We thank you for your past custom and hope that we can continue to serve you for many years to come

OPENING HOURS:

Mon-Sat 12.00-3.00pm & 5.30-11.00pm

Sun 12.00-3.00pm & 7.00-10.30pm

Dore Railway Station, Dore, Abbeydale Road South, Sheffield. Tel. 0742 620675

## Bull Baiting


In almost all the villages and towns of Derbyshire from the 12th Century onwards until 1835, when it was abolished, bull baiting was one of the climaxes of the Wakes or Fairs. A bull with its horns protected was secured to a post or bull ring, usually in the centre of the village. Here the beast was harassed by dogs. Bets were laid on the dogs as to who would be able to pin the bull down by its nose. The dogs were well trained to avoid the horns and charges of the bull, but despite this many were thrown high into the air.

Several bull rings can still be seen, such as at Eyam, Foolow and Snitterton.

In the 18th Century a bye-law was passed in Chesterfield that all butchers in the Shambles who killed bulls must bait them first. If you did not, you were liable to pay a fine of 3s. 4d. (16p). It was believed that baiting the bull first tenderised the meat, as well as informing everyone who sold bull beef.

Ashbourne was a popular place for bull baiting, and the animal was tied or chained to the bull ring in the market place. It is said they continued the practice long after the Act abolishing this practice became law. On rare occasions a horse has been known to be baited. Bradwell was another place where the "sport" was popular. On several occasions the bull became so maddened that he tore himself free and chased the spectators. In 1820 at Bradwell instead of having the bull chained to a ring, the spectators formed a circle. Frank Bagshaw from Hazelbadge Hall came into the ring and shouted, "Tey him to mev; tey him to mev." As requested, he was tied to the bull's tail, and as soon as the dogs were set on the bull, the bull ran and dragged Bagshaw up Bradwell Brook!

In Tutbury, just inside Staffordshire, was the custom of Bull Running, which is said to have been started by John of Gaunt in the 14th Century. The custom was abolished in 1778. The bull was provided by the Prior of Tutbury, but later the lands belonged to the Dukes of Devonshire. The custom was a brutal one, for - "The animal's horns were sawed off, his ears cropped, his tail cut off to the stump, all his body smeared with soap and his nostrils blown full of pounded pepper." While this was being done the steward from the Minstrel's Court proclaimed that everyone should allow the bull to pass and no-one was to get within forty feet of it, except the minstrels.



**WORKING DAYS**  
**ABBEYDALE INDUSTRIAL**  
**HAMLET**  
**August Bank Holiday Weekend**  
**28th, 29th and 30th August**

A superb chance to see working demonstrations of old skills that made Sheffield famous and new skills that are the envy of the world.

Jewellery, Silver-Smithing, Mark-Making, Grinding and Blacksmithing are just some of the things to view.

*Free Car Parking*

**Mouth-watering Cafe – excellent Gift Shop.**

Abbeyle Industrial Hamlet is on the Bakewell Road, on Abbeyle Road South, just past the Beauchief Hotel.

*For further details*  
**Telephone:**  
**(0742) 367731**

The bull was let loose, and it was up to the minstrels to catch him, between the time he was released and sunset. If the bull was not caught, it became the property of the giver. However, if a minstrel managed to get hold of the bull and cut off a piece of its hair and brought it to the market cross, as proof of his deed, the bull was brought to the bailiff's house. Here a collar and rope were fastened round it before being secured to the bull ring. Then it was baited with dogs before being given to the minstrels.

As well as bull baiting at the fairs, bear baiting was equally as popular. At Ashford-in-the-Water, the bear was harassed by dogs every evening of the festivities. The bear was muzzled and secured to a ring in the centre of the village. A single dog was generally set against the bear, who was usually blind. One blow with the bear's paw often maimed the dog. The bears were not killed but were looked after by bear 'wards', who either travelled around the area or, if at a large centre of population, were kept permanently for the annual fairs. The custom was abolished, along with bull baiting, in 1835.

"The wisdom of our ancestors  
 A well known fact I'm stating,

Thought bulls and bears, as well as hooks,  
 Were suitable for baiting.  
 But now this most degenerate age  
 Destroys half our resources  
 We've nothing but our hooks to bait,  
 Unless we bait our horses."  
 - Ward.

*John N. Merrill*  
 Extract from "Customs of the Peak  
 District & Derbyshire" published by  
 Trailcrest Publications Ltd, Wirksworth.

## Totley Tunnel Centenary

During May 1994 it will be 100 years since the first passenger train travelled the Dore to Chinley line. Hopefully, the villages and villagers of Dore and Totley will join forces to celebrate the centenary of their most famous landmark THE TOTLEY TUNNEL. (Can you have a landmark underground?)

The success of the occasion will depend on the enthusiasm and participation of you, (YES, YOU) and your friends and neighbours throughout the district.

Co-ordination of the festivities is already underway but such a large scale event relies on Local Groups, Associations, Clubs, Schools, Pubs, Churches and individuals also doing their bit.

Lots of ideas have already been put forward for consideration including a Themed Fete, Photographic and Art Exhibitions, Model Railway Exhibition, School Projects, Barn Dances, Bar-b-Ques etc.

All this would be too much for one association alone to organise, so co-operation and support by local groups is paramount, as they can take on the running of a particular event which could be used to raise funds for themselves under the general banner of the Tunnel Centenary.

The last occasion that this type of general indulgence successfully took place was in 1977 for the Queen's Silver Jubilee.

Get thinking about those ideas now and starting planning in plenty of time. Remember MAY 1994.

Abbeyle Industrial Hamlet and Dore Station have already expressed interest in participating but we must not forget the other end of the Tunnel - Grindleford. They are underway with their plans for the centenary and it is hoped to link up with them, maybe by means of a trip through the tunnel, possibly by steam train.

For further information keep in touch through your community magazines - TOTLEY INDEPENDENT and DORE TO DOOR.

Initial enquiries can be made to: John Baker (Dore) 369025 or Danny Barlow (Totley) 365063.

This will be a unique opportunity and excuse for Dore and Totley to celebrate, as a whole, no one need feel left out.

Here are a few suggestions: we need Street Parties organising; Road, Pubs and Houses; trimming up and Shop Windows to display the Tunnel and Railway theme.

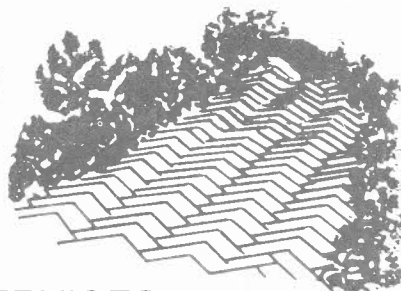
Dore Village Society & Totley Residents' Association

## BLOCK PAVING SPECIALISTS

WE ALSO SUPPLY AND LAY  
 ALL OTHER  
 ASPECTS OF  
 PAVING

- PAVING
- CONCRETING
- PATIOS
- FORECOURTS
- CAR PARKS

- AVAILABLE IN A RANGE OF COLOURS & LAID IN VARIOUS DESIGNS
- REFERENCES AVAILABLE ON REQUEST
- QUALITY WORKMANSHIP & COMPETITIVE PRICES ASSURED AT ALL TIMES



### DORE BLOCK PAVING SERVICES

SHEFFIELD 0742 369684 MOBILE NO 0831 483845 49 RUSHLEY RD, DORE

## A La Carte

The most popular starter on our menu at the moment; created by head chef Ferdinando Rosato, is simple to make and easily adapted for a main course and perfect for a summer picnic.

### Warm chicken salad with stem ginger and toasted hazelnuts

serves 4 as a starter  
Prep time 35 mins  
cooking time 5 mins

#### Ingredients:

1 chicken breast skin and bone removed, cut into thin strips

1 oz hazelnuts toasted for 2 mins under the grill

selection of interesting salad leaves ie. endive, roquette, lollo rosso.

For the dressing:

1/2 cup olive oil

juice and zest of 1 lime and 1/2 lemon

fresh mint leaves finely chopped

tablespoon finely chopped spring onion

1 piece of stem ginger and 3-4 tablespoons of the syrup

freshly ground black pepper and salt to taste

Place all the dressing ingredients in a screw top jar and shake well, put in the fridge until required. The longer you leave the dressing the better the flavour.

Lightly pan fry the pieces of chicken in a little butter. Keep warm. Mix salad leaves together – you could add a handful of fresh chopped herbs if you wished.

Arrange chicken over salad in four individual dishes. Pour over the dressing and sprinkle with toasted hazelnuts.

Serve whilst chicken is still warm, garnished with slices of lemon and lime, accompanied with crusty ciabatta bread to mop up the juices.

*Kim Hartley &  
Ferdinando Rosato  
Hartleys of Hathersage  
Wine Bar & Bistro*

## News in brief

**Sheffield War** is the title of an exhibition of life in Sheffield during World War Two, on view at Kelham Island until 30th September. Open Monday to Thursday 10am-4pm, and Sundays 11am-4pm.

**The Victoria Wine shop** in Dore has won the Midlands Regional Shop of the Year title. It was selected from 162 shops for its customer service, presentation and high retailing standards.

**The footbridge** which spans Old Hay Brook opposite Totley Grove was replaced by the Council in June.

**Access to Burbage Moor** - A stile has been constructed on the A625 Hathersage Road giving access to Burbage Moor this follows requests to the City Council from The Ramblers' Association, Sheffield Campaign for Access to Moorland and Dore Village Society.

**Dore Methodist Church** - A reminder that the "Sunday School with a Difference" for 5 to 11 year olds begins on Sunday 5th September at 10.30am. Phone Rev. Alan Dawson 361490 or Mr David Bramah 365653.

## DORE VILLAGE SOCIETY

Registered Charity No. 1017051

The objective of the Society is to foster the protection and enhancement of the local environment and amenities within Dore, encourage a spirit of community and record its historic development.

Chairman	
Mr. A.C. Bownes Limpits Cottage	352107
Treasurer	
Mr. C. Myers 1 Rushley Avenue	365658
Committee	
Mr. J.R. Baker	369025
Mrs E.C. Bownes	352107
Mr. L.J. Conway (Planning)	361189
Mrs G Farnsworth	350609
Mr. M. Hennessey	366632
Mrs. C. Veal	368437
Mrs. S. Wood	366424

## Dore Art Exhibition

Peter Marks tutor to the Dore Art Group is holding an exhibition of watercolours, pastel paintings and drawings at the Old School House on Saturday 30th October and Sun 31st Oct. 10.00am-5.00pm. Admission free.

The figurative paintings cover the "White and Dark Peak" of Derbyshire – Cornwall and the Lake District; popular areas but seen in a personal and perceptive way.

Inspired initially by the English School of watercolour painters J.S. Cotman in particular, most of the paintings are for sale.

## Chris's

### Bakery & Coffee Shop

Light lunches and Snacks.  
New Range of home made jams and pickles. Catering for various occasions, call in for sample menus

*Take a break with your friends*

Open 9-4.30pm Monday to Friday 9-2pm Saturday

26 High Street, Dore. Telephone 364397

## HARTLEYS of Hathersage

"LES ROUTIERS AWARD" WINNERS 1993

Our Chef Ferdinando Rosato blends the best of French, Italian and English cuisine, complemented by quality wines, and served in a warm and welcoming atmosphere.

**SET FOUR COURSE DINNER £12.95 OR FULL A LA CARTE MENU**

Examples from a changing menu include:

Mushrooms stuffed with Walnut & Madeira

£2.85

Stilton Apple & Walnut Strudel

£2.95

Roasted vegetables & marinated Feta Cheese Salad

£3.25

Supreme of Chicken with Camembert Cheese & Straw vegetables

£7.95

Skewered Veal Parcels with Parma Ham, Swiss Cheese & Fresh Sage

£8.75

Oriental ground rack of Lamb, Ginger Wine & Spring Onion sauce

£8.95

Fresh Herb & Garlic Tagliatelle with Stilton Cheese, Mushrooms,  
Cream & Toasted Almonds

£5.50

Speciality Pizza topped with Roasted Tomatoes, Smoked Salmon,  
Cream Cheese, Capers & Fresh Lemon

£6.25

Private parties and special occasions catered for

Open 7 days a week from 7pm till late 24 hours booking on (0433 650665)

Main Road, Hathersage, Sheffield S30 1BB

## HARRI'S

## The Sausage Shop

The only shop in South Yorkshire exclusively devoted to sausages!

Sample from our huge range of mouthwatering sausages which include:  
The Transylvanian, Wild Boar and Juniper Berries, Pork and Scrumpy, Venison,  
and many many more

From the traditional to the unique and unusual we make them all, using 150 recipes producing 20 to 30 types of sausage a day All made on the premises using high quality cuts of meat, fresh herbs and seasonings. There are no additives, colourants or chemical preservatives.

The Sausage Shop, 465 Ecclesall Road, Sheffield  
Telephone 0742 670009

Independently owned by chef David Harrison "Barbecue Packs Available"



Building a stack. Bottom field, Ryecroft Farm (Interwar years?) Note the hoisting system.

## Farming Notes

So far, this year is shaping up to be a typical English summer. Several short showers every day interspersed with wind and sun – ideal for grassland farmers. The silage revolution of the last twenty five years makes it possible to take full advantage of this patchy weather, as the odd shower isn't disastrous. But to make good hay, you need at least six fine days in a row, which this year seems unlikely. We've lost count of the times our last patch of hay has been turned.

The old hay meadows were cut long after the grasses had flowered, by which time they had lost much of their feed value, but needed far less time in the field to make hay. The crops would be so thin you could see the mowing machine fingers while you were cutting. The fields were full of moonpennies and a lovely sight, and the crested dog's tail gave the hay a lovely scent but little feed value. If it rained for a few days (which it invariably did) before it had been turned, the grass would grow up through the thin swath, so that after a week you couldn't see any hay! The old saying "Cold wet May; barn full of hay" had its logic but depended on some dry weather to follow. Also the old horse turners were so inefficient, they couldn't drag the hay through the grass. You had to walk round with a rake and drag it out by hand. It's amazing how big a five acre field looks when you're doing that!

Once dried it was raked into windrows, then cocked up, loaded on to a dray and off-loaded to a stack. Building a stack of loose hay was quite skilled (see photo). The stack had to be kept level, built up to a pitched roof and then thacked (local word for thatched). Enough sheaves from the spring thrash would be saved for this purpose. Wheat straw was best, otherwise good oat straw would do. A properly thacked stack was perfectly waterproof. The finished stack looked marvellous, but what labour it involved! Then in winter, it had to be cut with a hay knife, trussed, and carried into the cow shed on a man's back. In Dore this was the way of harvesting until around 1955.

TV series such as 'All Creatures Great and Small' go to enormous lengths to get the

period features exact, but it's amazing how often you see a pick-up bale in a period that's supposed to be pre 1950. If you're really sharp-eyed, see if they're using plastic twine. That didn't come in until the mid sixties!

Richard Farnsworth



"IF YOU'RE NOT AN EDIBLE 'DORÉ' MOUSE  
WHAT ARE YOU DOING IN THE PANTRY?"

## Time flies

I have heard it said that time can be defined as the passage from order to disorder. On that basis time flies in Dore as so much around us deteriorates. Just think back to what the village was like 20 or 30 years ago, somehow a more attractive and comfortable place. Wear and tear can be insidious, until suddenly it is too late. If we don't maintain things, buildings, walls, hedges, then in the end they are lost or replaced by something rarely as visually acceptable. Road signs - some was amended the sign at the end of Limb Lane to DOPE weeks ago, telephone boxes - gone forever, even toilets. Do we really need another retail outlet? Why don't we fight to keep our toilets open Hillsborough style?

Then there is Baslow Road Bridge, damaged in a traffic accident two years ago, and still not rebuilt by the Council. The upstream stone parapet was carved with details of the mileage to Baslow and Sheffield respectively and the stones can still be seen languishing in the stream bed. No doubt lack of money is to blame (as seemingly always nowadays), but if the damage was as a result of a traffic accident the Council should have claimed from the insurers. If not, why not?

Perhaps we need a Parish Council to do what this community wants, not faceless administrations in the Town Hall or Downing Street.

And hedges. For those of us who travel around on foot, the problem of footpaths restricted by weeds, hedges and trees is worse at this time of year, especially after rain. Householders are responsible for ensuring plants in their gardens do not restrict passage on pavements or footpaths. If they fail to do so the Council can require action, or take it on themselves and recover payment. Yet in some cases there are trees that have encroached on footpaths for years. If when walking or pushing a pram you have difficulty, then try writing to Mr Kyle, Highways & Traffic Division, Sheffield Council, 2 Carbrook Hall Road, Sheffield, S9 2DB.

Dore mouse

## House styles in Dore and Totley

Following the A.G.M. of the Dore Village Society in May, Dr. Roger Harper gave an interesting talk on the development of house styles in the area. He showed slides of local examples, comparing these with houses of similar periods in other parts of the country.

The earliest example was of Totley Hall (1623), which was described as a house of the rising middle class, simple in style due to the inability of local craftsmen to work fine detail in stone. Other early buildings were Cromwell Cottage on Townhead Road, built as a single dwelling in 1696, Limpits Cottage and Greenwood Mount in the village centre.

The influence of the 17th and early 18th century Georgian style was apparent in the design of the Door Moor Inn and the Old Vicarage. 18th Century gothic was illustrated in house styles in Edensor and the gatehouse at Whirlow Grange. There was a modern version of the Dutch influence, popular in the 17th century, on Blackamoor Road.

In the 19th century pattern books were produced, showing examples of rural residences. Builders used these to gain ideas for new developments. Hence designs by top architects influenced our local buildings. Layout was also important as in the 'garden city' look of Leyfield and Totley Brook Roads.

However it was the historic styles that appear to have had the greatest influence – gothic/jacobean in Whirlow Court and Abbeydale Hall, Victorian gothic – monument opposite Dore Station, renaissance revival – some of the Victorian houses on Dore Road.

The talk ended with slides of an important necessity – the Dore prefabs, which were only expected to last for 5 years and Causeway Glade, quoted as a good example of modern architecture.

Deadline for Winter  
Diary Entries  
Saturday  
6th November 1993

## Sheffield Old and New

From Manor Castle to Orchard Square, an Exhibition of Paintings by Pauline Shearstone AYA. FRSA, can be seen at the Abbeydale Industrial hamlet, Abbeydale Road South, Sheffield. From 19th June-Nov 8th, 1993.

This Exhibition shows a selection of Pauline Shearstone's work which includes her scenes of old and new Sheffield. The pictures are arranged in themes and show Sheffield's working Life, The Museums, Sheffield Town and Sheffield Suburbs and Theatres both past and present. Pauline has prepared the Exhibition specially for the Sheffield Centenary Celebrations.

Pauline's Studio is housed in the

Workmen's Cottages at the Hamlet where her watercolour classes and workshops are held throughout the year.



SITUATED AT WEST BAR, SHEFFIELD  
(0742-752147).

A registered Educational Charity  
run by volunteers.

The history of fire fighting displayed  
in a 1900 Victorian Fire/Police Station.

OPEN SUNDAYS 11 a.m. to 5.00 p.m.  
Easter through to November.

## Dore Ladies Group

DORE LADIES GROUP would like to welcome new members and visitors. We welcome women of all ages and usually meet on the first Tuesday of each month with exceptions, between 7.45pm and 9.30pm in the Church Hall, Townhead Road. There are speakers, demonstrations, social occasions including theatre visits and a summer walk with supper. If you are looking for an interesting night out why not come along and give it a try, we think you will be pleasantly surprised. If you have transport problems, would like someone to come with you, or would like further information, please telephone me on 365890.

*Shirley Summerson, Hon. Sec.*

## DORE DENTAL CARE

R.D. CLARK BDS J. MEYER BDS

- All aspects of NHS and private treatment
- Preventative orientated practice with education room
- Orthodontics for adults and children
- Cosmetic dentistry
- Wheelchair access
- Home visits and emergency service
- Late night and Saturday morning appointments

27 Causeway Head Road, Dore, Sheffield S17 3DR  
Telephone (0742) 368402

## DORE PHYSIOTHERAPY PRACTICE

Esther Hague BSc (Hons) Physiotherapy, MCSP, SRP

- Back problems
- Neck and shoulder pains
- Sports injuries
- General muscle and joint problems
- Advice on exercising and fitness training
- Stress incontinence

56A Dore Road, Sheffield S17 3NB  
Tel. 621255

## CHIROPODIST

Mrs Anna Steele, S.R.N. H.V.

*Qualified Chiropodist*

M.S.S.Ch. M.B.Ch.A.

Surgery behind Dore Chemist,  
Townhead Road.

Home Visits for the Housebound.

*24 hr Answering Service*

Tel: 362048

## QUICKMOVE

A FASTER OPTION FOR THE  
BETTER INFORMED

QUICKMOVE - The new computerised communication system, unique to David Law and Co, informs you of every development - the moment it happens. When the contract is ready - you're the first to know. When the mortgage offer is agreed - you're the first to know. When the contracts have been exchanged - you're the first to know.

For peace of mind, a comprehensive legal report on the property is prepared and nothing is left to chance. You can relax, knowing that you are going to be kept informed of the progress of your move.

Instant file access and immediate on screen updates are all part of the service and it doesn't cost a penny extra.

At last, a solicitor who genuinely takes the hassle out of moving. Keep informed with "Quickmove".



*David Law & Co.*  
SOLICITORS

Contact Stephen Williams or Tricia Carter  
on 0742 700999.

Telegraph House, High Street, SHEFFIELD. S1 1PT  
7b Church Street, Dronfield. S18 6QB

## HEATHERLEIGH RESIDENTIAL HOME



The superb facilities are set in more than three acres of beautifully landscaped gardens overlooking the Hope Valley and provide a serene, relaxed atmosphere only 5 miles away from South West Sheffield.

Our aim is to put the comfort and happiness of residents above all else. It is to be HOME and not just A home, preserving the independence and dignity of each resident.

Registered nurse on staff, 13 single rooms. Short or long stay welcome.

12 PADLEY HILL, NETHER PADLEY,  
GRINDLEFORD, SHEFFIELD S30 1HQ.  
Telephone: Hope Valley (0433) 630214

# Dore Show 1993

Saturday 11th September

Old School and Methodist Church Halls

Entries 9-10.30am

Open to public 2pm

## CLASS LIST

### Vegetable and Fruit Section.....

- |                          |                         |   |
|--------------------------|-------------------------|---|
| 1 6 pods of runner beans | 6 6 tomatoes on a plate | 11 4 beetroot                                 |
| 2 3 onions, dressed      | 7 Any other vegetable   | 12 4 white potatoes                           |
| 3 1 cabbage, any variety | 8 4 dessert apples      | 13 4 red potatoes                             |
| 4 1 vegetable marrow     | 9 4 cooking apples      | 14 A tray of mixed vegetables including salad |
| 5 1 lettuce              | 10 1 cucumber           | 15 The heaviest marrow                        |

### Flower Section.....

- |   |  |                                      |
|---|--|--------------------------------------|
| 16 5 dahlias, cactus variety                  | 20 3 chrysanthemums, incurved or reflexed (same variety) | 23 A vase of hardy perennial flowers |
| 17 5 dahlias, decorative variety              | 21 A vase of spray chrysanthemums                        | 24 1 plant in a pot (max size 6")    |
| 18 A vase of mixed dahlias arranged to effect | 22 6 roses, any container                                | 25 A vase of annuals                 |
| 19 3 gladioli                                 |  | 26 A vase of heathers                |

### Floral Art Section.....

- |   |  |
|---|--|
| 27 September Colour. An exhibit using any natural plant material. Space allowed 2'6"  | 29 A September Basket. An exhibit arranged in a basket, featuring garden plant material. Space allowed 2'6"                              |
| 28 Seashore. An exhibit using any natural plant material. Space allowed 2'6"<br>(Entry forms for these classes, available from Greens shop on Causeway Head Road) | 30 Collector' Corner. A petite exhibit. Any natural plant material allowed. This exhibit should not exceed 9" in width, depth or height. |

### Domestic Section.....

- |                                      |                            |                            |
|--------------------------------------|----------------------------|----------------------------|
| 31 4 butterfly buns                  | 35 A Lemon Meringue pie 8" | 39 A jar of strawberry jam |
| 32 4 afternoon-tea Scones with fruit | 36 An apple pie on a plate | 40 A jar of marmalade      |
| 33 A Dundee Cake                     | 37 A plate of 6 biscuits   | 41 A jar of chutney        |
| 34 A Victoria Sandwich               | 38 A loaf of bread         | 42 A decorated cake        |

### Wine Section.....

- |  |  |
|--|--|
| 43 A bottle of home made wine, dry red   | 45 A bottle of home made wine, dry white   |
| 44 A bottle of home made wine, sweet red | 46 A bottle of home made wine, sweet white |

### Textile Craft Section.....

- |                                    |                          |               |
|------------------------------------|--------------------------|---------------|
| 47 A hand knitted adult garment    | 49 A dressed doll        | 51 A soft toy |
| 48 An original piece of embroidery | 50 An exhibit from a kit |               |

### Visual Arts Section.....

- |                            |   |  |
|----------------------------|---|--|
| 52 A water colour painting | 55 Black & White photograph of an architectural scene | 57 A piece of pottery or ceramic form    |
| 53 An oil painting         | 56 Colour photograph of people in an environment      | 58 A craft exhibit in wood               |
| 54 A drawing, any medium   |   | 59 A craft exhibit in any other material |

### Junior Section (Up to age 14).....

- |   |   |  |
|---|---|--|
| 60 A vegetable animal                                 | 63 A painting or drawing of a space fantasy (age 9 to 11) | 66 An arrangement of flowers in an egg cup |
| 61 A painting or drawing of any subject (age up to 5) | 64 A painting or drawing of a still life (age 12 to 14)   | 67 A craft exhibit (age up to 8)           |
| 62 A painting or drawing of a dinosaur (age 5 to 8)   | 65 A miniature garden on a seed tray (age up to 11)       | 68 A craft exhibit (age 9 to 11)           |
|   |   | 69 A craft exhibit (age 12 to 14)          |
|   |   | 70 3 decorated buns or biscuits            |

The Secretary, Dore Show 1992, 8 Thornsett Gardens, Dore, Sheffield, S17 3PP. Tel (0742) 369025





Sheffield City Morris Men at the 1992 Dore Show.

## Whirlow Hall Farm Fayre

Come along to this year's Farm Fayre on Sunday 19th September, 10am to 5pm, and enjoy yourselves, whilst helping to raise money for disadvantaged and disabled Sheffield children.

There are lots of attractions all day with free circus and puppet shows in a Big Top, the Great Welsh Sheep Show, an Ideal Home Marquee, a Craft Marquee and Trade Stands. There will also be bouncy castles, children's rides, laser shooting, quad cars, sideshows and lots of other free entertainment with bands, dancers and displays of farm animals. All this for just £1.50 for adults and 50p for children (under 5s free).

Whirlow Hall Farm is a 130 acre working farm with sheep, cattle and pigs, which employs 3 young people with learning difficulties. Children and disabled adults are able to visit the farm on a daily basis or for short working holidays, staying in the residential farmhouse.

Visitors involve themselves with various tasks in the day-to-day running of the farm and have the chance to observe and handle a wide range of animals – the farm is also home to a pony, goats, rabbits, turkeys, ducks, geese and chickens.

Many of the children who visit the farm don't get a holiday and for them it is often their first taste of independence and gives them their first hand experience of dealing with animals.

All the money raised at the Farm Fayre will go directly to helping Sheffield's disadvantaged children and adults with learning difficulties.

## Letter

Dear Sir, I read your article on mines in Dore with great interest. My father Edgar worked at the ganistermine on Shorts Lane for many years.

It was owned at the time by Ted Thorpe, landlord of the Devonshire Arms. I used to visit DAD at work, he had the birds so tame they would hop on his knees and take bread from his hands at dinner time. I also used to visit him in the hope of getting a ride back home in Ted's car, which was an SS Jaguar the only one in the area at that time.

When the mine closed, Dad went back to his trade as a monumental mason, he went into partnership with Bull Gill. They had a workshop at the top of Drury Lane. The building is still there, in the garden of Garden Cottage. They used to saw these huge blocks of stone, shape them into grave stones, then carve and letter them. It was all done by hand, a very hard dirty and dusty job, but required great skill to do it. There are many examples of Dad's work in Dore church yard and every other church yard in the Hope Valley. I feel very proud when I see a gravestone with Taylor & Gill, Dore carved on it. Plus all the house names that he carved are all still there to be seen.

J. Taylor

## Keep in Shape

Keep fit and healthy with one of the local organisations offering classes in our area of the city.

**Yoga and Relaxation** for women & men. William Levick School, Dronfield. Wednesday 7.30 to 9.00pm. See library and local press

**Yoga** Dore Methodist Church Hall, Monday 7.45 to 9.15pm. Phone 365043.

**Dore School of Theatre Dance** for all ages. Ballet, Tap, Modern, Stage and Gymnastic Dance. Dore Church Hall. Phone 366014 for details.

**Keep Fit** Totley United Reform Church, Totley Brook Rd, Thursday 7.30 to 9.00pm. Phone 360131.

**Yoga** St. Johns. Wednesday 1.30 to 3pm.

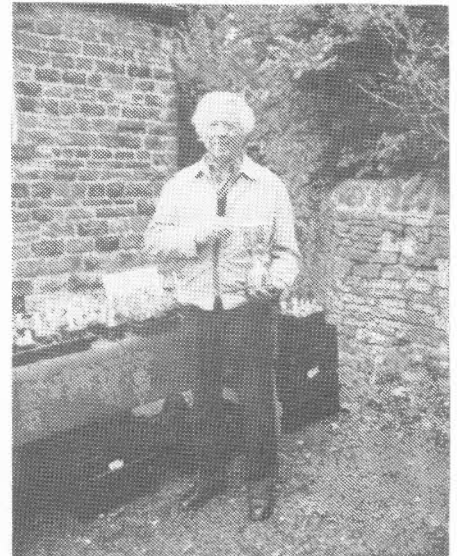
**Yoga** Dobcroft Infant School. Pingle Road, Wed. 7.30 to 9pm. Phone 362765

**Keep Fit** Abbeydale Hall Mon

9.45am to 11.15am.

Mon 11.30am to 12.30pm 60 years +. Phone 585364.

In our next issue we hope to publish information about drama groups in our area, so if you are involved in drama and would like your organisation to be listed, please phone Stella Wood on 366424 or write to 87 Abbeydale Park Rise.



George Thorpe, winner of the Skelton Cup for the individual gaining the most points overall in the Vegetable, Fruit and Flower Sections at the Dore 1992 Dore Show.

## Garden Designs by Kerr Associates

distinctive gardens created  
advisory consultancy  
garden visits  
arboricultural reports

plus  
execution of all works by qualified professionals

Telephone 0742 377081

Personal attention to all client detail by

**Jim Kerr** Dip. Hort. (RHS Wisley) N. D. Arbor. (RFS)

## Greens Home and Garden Supplies

Your local shop for  
**Hardware, Household Stores,  
Building Materials & Garden Requisites**

**10 Causeway Head Road, Dore**

**Telephone 362165**

Stockist of Dore Village Society Publications

## Health in Sheffield – 100 years ago

The Director of Public Health, Dr Paul Snell, recently published his 6th annual report. In recognition of Sheffield's centenary celebrations as a city, it contains interesting passages from the 1882 annual report of the Medical Officer of Health for Sheffield, Harvey Littlejohn. Although the main causes of death and disease are much altered, the variations in health across the city remain comparatively unchanged.

Although Dore was outside the city boundary, the adjacent district of Ecclesall was second only to Upper Hallam in having a low death rate both for adults and children under 1 year. At 17.80 deaths per 1000 of the population it compared very favourably with Sheffield North at 27.65.

The 1892 report devotes a section to small pox and "Totley, where, owing to the construction of a new railway, a large number of navvies were employed". No provision existed for "dealing with an epidemic. There were no hospitals and patients were treated in their homes while the other members of the families went about in the district, and also had free communication with Sheffield. For the sake of self-protection, therefore about 40 cases from outside the Borough were received in Lodge Moor Hospital". Where possible the houses of the infected were emptied, the bedding taken away for disinfection and the house fumigated with sulphur. In some cases it was not possible fully to fumigate clothes as poorer members of society had not a complete change. The common lodging houses caused problems due to the large numbers of inmates, up to 90, and the itinerant nature of the lifestyle of tramps and navvies.

Other killer diseases were diphtheria, diarrhoea and plumbism. The latter was lead poisoning, which caused 8 deaths in Sheffield. All victims worked in the

# SHEFFIELD WAR!

**KELHAM ISLAND  
26th JULY- 30th SEPTEMBER  
AN EXHIBITION OF LIFE IN SHEFFIELD  
DURING WORLD WAR II**

July 26th sees the opening of an exhibition showing Sheffield in wartime. How did war affect the city? What impact did it have on people's lives? Where did war leave the city afterwards? To find out the answers to these questions and more visit.

**KELHAM ISLAND  
INDUSTRIAL MUSEUM,  
ALMA STREET,  
SHEFFIELD  
Telephone: (0742) 722106**



tool/cutlery trades, five of the deaths occurring in file cutters.

Diarrhoea was a much greater threat, 3,500 deaths having occurred in the 10 years to 1892. Children having occurred in the 10 years to 1892. Children were most susceptible, particularly during the summer and autumn months. Poor sanitary conditions were the most likely causes, where "yards are undrained, unpaved and sodden with sewage and liquid oozing from privy middens."

Harvey Littlejohn was keen for the population of Sheffield "to seek dwellings nearer the outskirts of the town, where they could enjoy a purer atmosphere, and healthier surroundings, than it is possible for them to obtain in the centre of the town for the same rental. A cheap and convenient

train service, and the running of workmen's cars on the tramways at suitable hours, would undoubtedly tend to induce people to move to the suburbs, and stimulate builders to erect dwellings suitable to the requirements of such tenants."

## Letter

Dear Sir,

Very many thanks for my copy of "Dore to Door". I think it is excellent and so interesting especially to me having been brought up in the village.

So many memories re-kindled on every single page. The talk of Sydney Speight the Headmaster. I see him sat at his desk drumming he alphabet into my head until it was there for ever. I cannot count the times I was given six of the best from him, beautifully administered of course!

I always though the war memorial just over the wall was his statue, he always kept his helmet hung on a wall in the school, but a fine man and I owe him the only formal education I've had!

The first man to join the forces from Dore in 1939 is mentioned, in fact I believe that to be my father, R.C. Tomlinson who was in the R.N.V.R. and was recalled before war was declared. He rose to be a Commander. I followed him into the navy at seventeen years of age, doing 'boy' service and as another of your correspondents mentions he'd met a Cyril Marshall, I too met a Leading Seaman Eddie Marshall. I served on destroyers on the lower deck and during this time Eddie Marshall joined our mess. Eventually we were chatting about home and said "Where do you come from?" "Sheffield" says he "whereabouts" say I? "Dore" say he, "Where in Dore" say I? "Causeway Head Rd" say he. This being my address I said "you've been put up to do this". It was just an amazing coincidence. He too was a fine man, a professional sailor, guiding us, teaching and giving us the benefit of his experience. Petty Officer and Leading Seaman are the back bone of the R.N. He taught us how to make a superb plum duff, just delicious, I have the recipe still.

In the same edition you mention Arthur Morton and his greengrocery business. He actually lived in an old Railway carriage in Dore Road, I delivered his orders each Saturday for sixpence a day. You show a picture of my dear younger brother aged six at The Vicarage. Also the Vicar, The Rev Saxilby Kemp whose word was law, "Thou shalt start work at fourteen, never mind your scholarship for the art school" and I did. Office boy at his friend's works in Sheffield. We sure needed the money, all 5/- of it!

I remember such happy Dore 'days'. Chris Robson (nee Chrissie Fallows), such a lovely little girl and now a lovely lady. I remember her dear Mother too.

Last but I hope not least I was very pleased to see my cartoon about the Doremouse – always a thrill to see ones efforts in print.

I am coming to give my second talk to Dore Mercia (Exit thro' the fireplace) T.W. Guild in Sept 93. I talk for an hour about my life as an actor over the last fifty years, acting a few scenes and all in a humours vein.

Thanks again for awakening so many memories and I haven't even mentioned the unmentionables!!

Geoff Tomlinson

**WE DON'T HANG ABOUT WHEN IT COMES TO SERVICE**  
The complete window service at affordable prices. Co-ordinating fabrics, papers and bedding. Track specialists. Retail or contract. Free home estimate. Helpful advice.

**76/98 ABBEYDALE ROAD Telephone (0742) 588555**

**MOONLIGHT CURTAIN CENTRE**

## Dore Junior School News

Recently Dore Junior School held it's Summer concert. The Choir and the Orchestra performed various songs and tunes like Bring Me Sunshine and 4 songs from Cats which were enjoyed by everyone. The Orchestra played 'Yesterday' by the Beatles. The Choir and the string instruments have also performed at the Cultural Festival which was held at the United Reformed Church in town.

The Y6s went to Padley Gorge on a country visit. It is a long country walk and if you go when its been raining it is really boggy.

Some of the Y5's went to Great Longstone for the day and they walked through the village colouring in maps to show what kind of houses there were. They drew some sketches and walked down to Bakewell.

The Y4's went on a trip to Hardwick Hall with Mrs. Bladen and Mrs. Henry. They had a lovely trip and an enjoyable day. They also found out lots about the Tudors.

The Y3's went to Whirlow Hall Farm to visit all the different animals. They enjoyed it very much and liked the animals a lot, especially the pot-bellied pig.

Our school has produced an anti-bullying policy. We designed posters, badges and slogans to stop bullying. We also had a list of things that may have been bullying and we had to decide if they were bullying, not bullying or inbetween. Then we displayed our work and shared it in Assembly. Each classroom has a policy on the wall for everyone to look at.

*Caroline Severs and Clare Billings (Y5)*



*Ryecroft Glen, Abbeydale Woods, taken below the houses at the bottom of Dore Road. Reproduced from a postcard probably published before the second world war. Note the intact victorian railings to the right of the picture.*

## More music

This autumn the Dore & Totley Community Arts Group are staging two events at King Egberts School. The first is a concert by the Marylebone Trio, (Violin, Piano & Cello) on Tuesday 12th October at 7.30pm. We can expect this to be yet another quality performance, available on our doorsteps, at a fraction of what it would cost to attend in the city.

Then in November they will be organising

the third Dore & Totley Competitive Festival of Music starting on the evening of Friday 12th, all day Saturday the 13th, with a free winners concert for everyone on the Saturday evening. This year there will be even more classes including piano duets and electronic keyboard. If you play an instrument and sing or know someone who does, why not consider entering or making a note to attend. The adjudicators will be Richard Eaton and Allison Walker-Morecroft. Further details and entry forms can be obtained from Ann Tilly Tel 360268 or Margaret Spencer 366212.

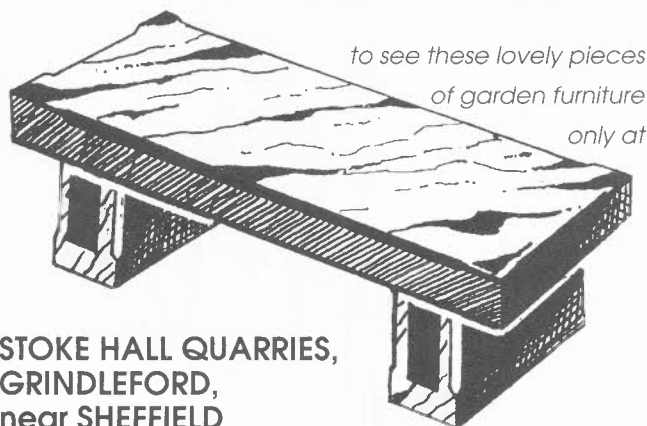
## Stoke Hall Quarries

are producing beautiful garden benches in mellow buff  
Natural stone

Typical size being 1200 height x 400 width  
**PRICE £119.50** including VAT

Requiring no maintenance whatsoever  
and perfect for the hidden  
corners of your garden

Call Stoke Hall Quarries now on  
**0433 630313**



*to see these lovely pieces  
of garden furniture  
only at*

**STOKE HALL QUARRIES,  
GRINDLEFORD,  
near SHEFFIELD**



## J. S. Jackson & Sons

Limited

**PLUMBERS**

**CENTRAL HEATING ENGINEERS**

GAS . OIL . SOLID FUEL  
S.A.F.S. and Corgi approved

PERSONAL ATTENTION FROM LOCAL PEOPLE  
**ESTIMATES FREE**

**43 TOWNHEAD ROAD, DORE  
SHEFFIELD S17 3GD  
(0742) 364256 and 304935**

## Eric Grant

your authorised

## HOOVER SERVICE CENTRE



- \* South Yorkshire's largest range of genuine spares for sale over the counter.
- \* Competitive prices on all new Cleaners, Washing Machines and Dishwashers.
- \* Fully guaranteed Repairs Service.
- \* Open SIX full days.

**A BUSINESS BUILT ON RECOMMENDATIONS**

747 Abbeydale Road, SHEFFIELD (Near TSB Bank)  
Telephone 550519 & 552233



Sheffield All Stars! Sid Crowson and Chris Waddle drumming up business at the Scout Gala.

## Letters

Dear Sir,

May I express my appreciation to the community in Dore for the warmth of their greetings on the occasion of the MBE award announcement.

It was my intention to retire as Group Scout Leader on attaining my 65th birthday to comply with the rules of the association, and to relinquish this office quietly.

The volume of messages, greeting cards and expression of support convinced me that I should cancel my intention to retire gracefully and share with you my joy on receiving this honour.

My sponsors must and will by statute remain anonymous, but in their absence may I thank them and say how much pleasure I have received in carrying out one of my Group Scout Leader obligations set out in the Policy organisation and rules of the Scout Association, to quote:

"Building and maintaining a good relationship with the groups immediate community."

To everyone concerned, Pamela, Judith and all members of the Blackmoor Guide leader team. May I thank you from the bottom of my heart for your support and encouragement. It is my pleasure to introduce Geoff Cope, my successor, knowing he will receive your support in future years. May I toast the success and influence of Scouting and Guiding here in Dore.

*Syd Crowson, 267th President.*

Dear Sir,

My daughter's friend lives on Totley Brook Road and usually passes on to me Dore to Dore.

I was very interested in the article on Overdale in the Spring issue.

Pre-war, I was in domestic service with Mr & Mrs D.M. Anderson at Overdale. I believe they had the house on lease because in 1938, at the time of the sinking of the submarine Thetis. I remember, they bought and we moved to The Firs, 66 Dore Road.

I have very happy memories of my time in Dore.

*Mrs. M. Duckham Maltby*

## 1-Liners

To cash in on unwanted items or promote your services locally, simply place an entry in this special classified section.

All you have to do is complete a form available at Greens shop on Causeway Head Road (or by phone on Sheffield 369025) and return it along with a fee of 1 per line. Your entry will then appear in the next published issue.

**Slimming World** - as featured in Women magazine. Slim and stay slim. Tel Liz 368158.

**Hall for hire** - suitable for meetings, parties, shows etc. Kitchen available. Dore Junior School. Tel 368283

**Picture framing.** Local. G Thomas 363431

## Planning

During the summer there has been little of note on the planning front, however, the construction of two dwellings at The White House, Vicarage Lane is nearing completion. Nearby on Gilleyfield Avenue the plot of land which would have given access to the allotments is now for sale with outline planning consent for one dwelling.

These two developments follow the refusal of planning consent for dwellings on the allotments and could easily have been added to create a much larger site.

**Unitary Development Plan** The six week consultation period on the deposit version of the plan ended on 27 July and further representations were made to the Council. A public enquiry is expected shortly.

## Guide Bazaar

Dore Rainbows, Brownies, Guides and Rangers are holding their Annual Coffee Evening and Bazaar on Friday October 15th 1993 between 7.00pm and 9.00pm in the Church Hall, Townhead Road, Dore. Mr. Syd Crowson, M.B.E. 267th Dore Scout Group President is going to open the proceedings.

Everyone is welcome to join us and you will be able to purchase items from a variety of stalls eg. Home-made cakes and produce, plants, gifts, second-hand toys, new books, our "Red" & "Green" stall and a Bran Tub.

The entrance fee will be 50p for adults - this includes coffee and home-made biscuits. There is no charge for children and they can have a free drink of orange and some biscuits. There will be games with prizes to entertain them.

Please come along with your family and friends and help to support us to raise money for our District Funds.

*Pamela Butterworth  
Blackmoor District Commissioner*

## SAMARITANS IN SHEFFIELD

The Sheffield Samaritan Centre is off West Street, not far from the city centre. There is a room where we answer the telephones 24 hours a day; rooms for meetings and training courses, and a small kitchen. We are open to visitors from 10 a.m. to 10 p.m., every day of the year. There are three small rooms where callers can talk privately to a Samaritan. Thanks to a legacy, we have been able to refurbish the Centre in the course of the year.

Although our Centre is right in the middle of Sheffield, we are not just a big city branch. Most of our contacts are by telephone: fewer than 15% are visits. Many callers contact us from the traditional mining communities of South Yorkshire, or from rural parts of Derbyshire. The Samaritans can be particularly important for people who live far away from city amenities. For those who are isolated or housebound, wherever they live, a friendly voice on the telephone can be a lifeline. Telephone (0742) 767277.



NEIL & ISOBEL SIMPSON  
welcome you to

## IN ARMS SHEFFIELD

Specialists in English Barbour and Beaver Country clothing and Olympic quality outdoor footwear.  
Selection of new and secondhand shotguns, rifles and air rifles, Pistols, Cartridges and ammunition. All shooting accessories.

57 Baslow Road, Totley,  
Sheffield S17 4DL  
Telephone: 0742 621088



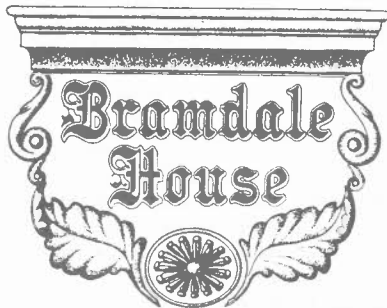
**E. & L. Wilson**



**Builders and Plumbers**

Central Heating,  
Domestic Plumbing  
Glazing, Double Glazing and Glass  
Home Maintenance  
uPVC and Wood Windows

17 West View Close, Totley Rise  
Sheffield S17 3LT  
Please ring Eric on 368343



**Fireplaces, Gas  
and Solid Fuel  
Showrooms**

**RECENTLY  
OPENED**

- Fireplace room settings
- Living gas fires
- Insets
- Baskets
- Furniture and all accessories

A NEW SHOPPING EXPERIENCE IN SHEFFIELD

**BRAMDAL GROUP OF COMPANIES**  
Bramdale House, 630-642 Chesterfield Road,  
Woodseats, Sheffield S8 0SA  
Telephone (0742) 588818  
Facsimile (0742) 584442



Opening Times:  
Monday to Saturday  
8.15am to 6pm  
Wednesday  
Late night to 7.30pm  
Sunday Viewing  
1pm to 5.30pm  
Large Free car park

## Precision Cameras

for all your photographic needs

69 Baslow Road, Totley, Sheffield S17 4DI  
Telephone Sheffield 360997

Professional Passport Photographs while you wait  
Plus  
Films, processing, cameras and repairs.  
Cine transferred to video  
Master photographers Association

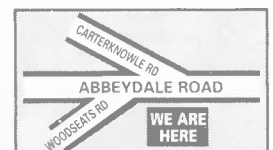


## Save £££'s

Huge range and stock of  
Wiltons-Shadows-Axminsters etc



FREE fitting on most ranges of carpets  
FREE delivery to most local areas  
FREE estimates  
FREE design and planning  
FREE Measuring of your home  
**MASSIVE REDUCTIONS ON BEDS**  
- SOFA BEDS -  
- BEDROOM FURNITURE -  
- THREE PIECE SUITES -



**ABBEYDALE CARPET &  
FURNITURE CENTRE**

715 Abbeydale Road, Sheffield  
Tel: 555242

OPEN 7 DAYS — LATE 'TILL 8 MONDAY TO FRIDAY

## CHARLES BROOKS

Shoe Repair Specialists since 1972  
35 Baslow Road, Totley Rise, S17. Tel. 621077

### Quality Shoe Repairs

Dry Cleaning Service  
and key cutting while you wait

Stockist of *Elmdale* the wider fitting ladies shoes, all at £38 per pair

10% discount  
on shoe repairs on production of this advertisement

## Bushey Wood

An interest by some local residents in the well-being and good management of Bushey Wood led to a meeting in the wood last November, organised by Dore Village Society, between Dan Lewis – Arborist, Sheffield Recreation Dept, Mr Andrew Conwill – Planning Dept and Stella Wood – D.V.S.

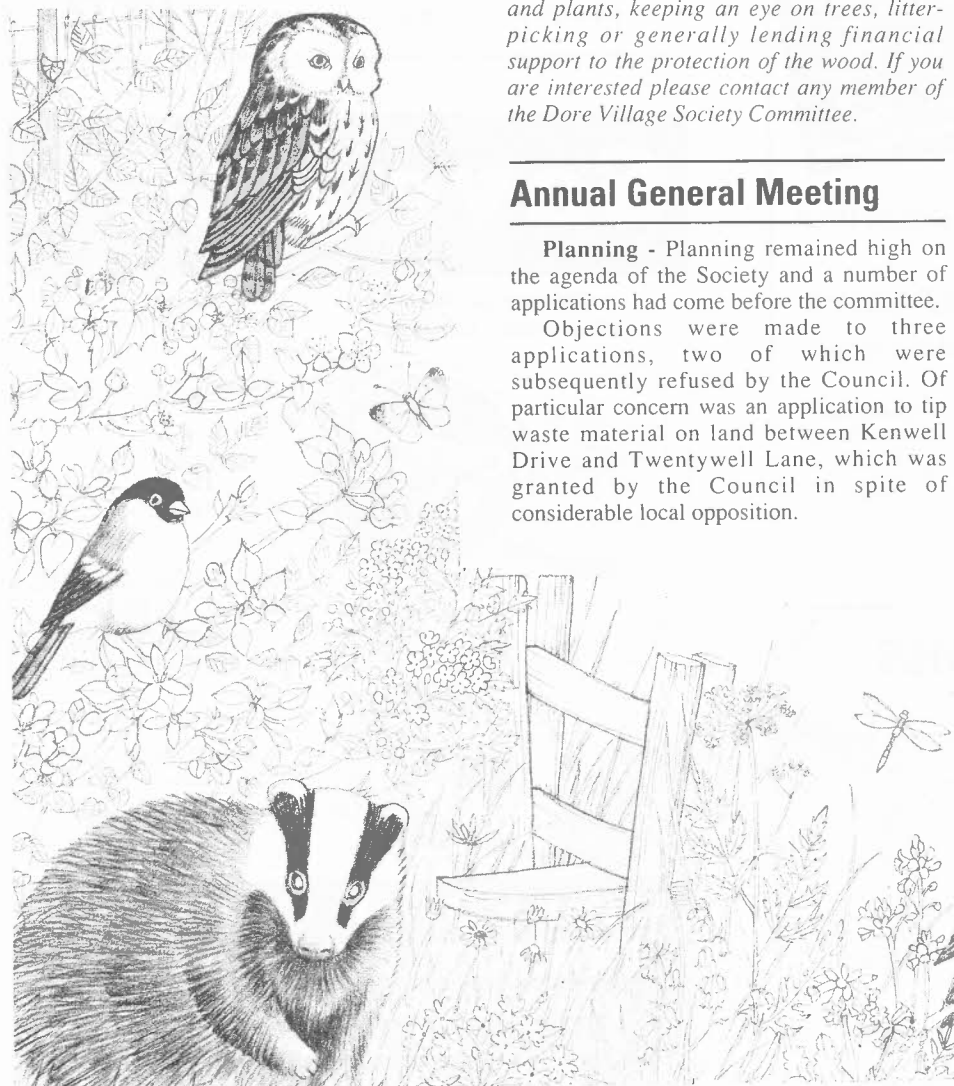
A walk through the wood revealed a good mix of trees including a few file maples. We were aware of the large range of plants, birds and small creatures thanks to a survey by Sorby Natural History Society in 1989.

Dan Lewis believes that few trees need immediate attention – some of the old ones have many years of life left. A few at the bottom end of the wood will need attention within the next decade – mainly because of under-cutting by the stream.

Mr Lewis recommends that in the long-term some thinning should be done and new trees planted. This should be done very carefully so as not to spoil the visual impact of this linear wood.

A few clearings now exist where some trees could be planted, but in some of these there is deep garden rubbish and rough vegetation. New trees must be above vegetation when planted. Mr. Lewis would advise on the type and size of trees to be planted.

Tree Preservation Order number 199 became operative in Bushey Wood on May 14th 1993. Copies of the order have been sent by the Department of Land and Planning



## WHISTLESTOP COUNTRYSIDE CENTRE Matlock Bath



**Wildlife Gifts - Souvenirs  
Countryside Exhibition  
Video Show - Crafts**

**Open weekends from 12 noon to 4 pm  
and daily 10 am to 5 pm from 1st April  
until 31st October.**

to the occupants of numbers 59 to 87 Devonshire Rd (odd numbers only) whose gardens abut the wood, informing them of its effects. Notices have also been posted on site.

Subject to some exemptions, the order states that; “– no person shall – cut down, top, lop, uproot, willfully damage or willfully destroy – any trees specified –”.

The area covered by the Tree Preservation Order includes areas of the wood which have been fenced in as part of gardens adjoining the wood.

*Perhaps we could all help to preserve this important local amenity by becoming Friends of Bushey Wood. This could mean joining guided walks to enjoy the wildlife and plants, keeping an eye on trees, litter-picking or generally lending financial support to the protection of the wood. If you are interested please contact any member of the Dore Village Society Committee.*

## Annual General Meeting

**Planning** - Planning remained high on the agenda of the Society and a number of applications had come before the committee.

Objections were made to three applications, two of which were subsequently refused by the Council. Of particular concern was an application to tip waste material on land between Kenwell Drive and Twentywell Lane, which was granted by the Council in spite of considerable local opposition.

On 15 October 1992 the planning appeal against the decision of the Council to refuse planning consent for the development of the allotments and relocating them to land on Limb Lane was held at the Town Hall.

The appeal lasted for a day and a half and the objectors' case was effectively presented by a team which included allotment holders, local residents, the CPRE and the Society.

After a substantial delay all were pleased to learn that the appeal had been dismissed.

The final draft of the Unitary Development Plan was expected to be produced in June and would be scrutinised to ensure that comments and representations had been taken into account.

**Publications** - Work on the revision of the Society's popular book of local walks, "From Dore to Dore" continued and it was hoped to have a draft during the summer.

Sales of other publications had been steady and the 1992 Christmas card sold out well before the festive season. In the light of this experience, Isobel Blincoe was again commissioned to produce an original drawing which will be used for the 1993 card.

It was also decided to produce a set of four notelets using beautiful colour photographs taken by a local photographer; these had been packed in a set of eight and were available at £2.50.

**Dore to Door** - The magazine had continued to attract acclaim from readers and had recently been expanded to 16 pages partly to cater for the increasing volume of material.

The magazine, financed by advertising, aimed to break even in the medium term.

Thanks were due to the editorial team, the contributors and artists and the team of 40 distributors.

**Dore Heritage Project** - There had been no substantive progress owing to delays on the part of Percheron Properties, part of Vaux Inns. However, the heads of terms were expected shortly.

**Dore Show** - Planning for the 6th show, this year to be held on 11 September, was well underway under the chairmanship of John Baker.

**Corporate Status** - Following the resolutions of the Special General Meeting held on 2 December 1992, the Society had now successfully completed the process for registration as a charity and was operating under the new constitution.

**Subscriptions** - Following the success of the pilot collection of subscriptions a small number of volunteers were collecting on a house to house basis. To date this had resulted in around 300 paid up members compared to around 400 during the whole of 1992.

**Committee** - The following were elected at the Special General Meeting: J.R. Baker, A.C. Bownes (Chairman), E.C. Bownes, L.J. Conway, G. Farnsworth, M. Hennessey, J.W. Laver, C.L. Myers (Treasurer), C. Veal and S. Wood.

Thanks were extended to all members of the committee for their support and encouragement during the year.

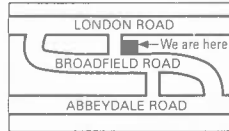
## Phoenix Fireplace Finesse

Manufacturers of quality fire surrounds

Visit our new fireplace showroom for the largest display of surrounds and gas fires in Sheffield.

*Quality at affordable prices*

15 CLYDE ROAD  
SHEFFIELD S8 0YD. Tel. 554699  
Hours of Opening  
Mon-Fri 9am-5pm Sat 9am-4.30pm Sun  
10am-4.30pm



Update you Kitchen or Bathroom

Consult the specialists with over 30 years experience in

**Wall, Floor & Mosaic Tiling**

**K EITH J OHNSON LTD**

(Recently of Rushley Road)

**Telephone 646206 anytime**

Domestic and Commercial work undertaken

DISCOVER

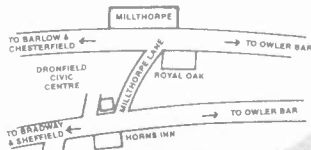
# The Millthorpe

– FULLY LICENSED RESTAURANT –  
Secluded in the heart of Derbyshire  
yet just on your doorstep...

*Delicious home-made food  
prepared by chef/proprietor Paul Rigby  
(ex-Gleneagles & Savoy)*

Extensive À la Carte & Table  
D'Hote Menu

Idyllic setting for Birthday &  
Anniversary Celebrations



For Bookings, Enquiries or a copy of our menu  
Telephone: 0742 891456  
New Road, Millthorpe, Holmesfield S18 5WN.  
OPEN: Tues-Sat from 7pm & Sunday Lunch from 12 noon  
*"The finer art of dining"*

## RICHARD GREAVES ELECTRICIAN

For all your electrical needs from a socket  
to a complete re-wire.



22 Hoole Road, Sheffield S10 5BH  
Telephone:- Sheffield 671218

## HOW DOES YOUR GARDEN GROW?

A country style garden full of life and  
colour? A low-maintenance garden that  
will look neat and tidy throughout the  
seasons? An eye-catching patio garden  
with colourful trailing plants and hanging  
baskets?

At Ferndale we can provide you with all  
you need. Come and see for yourself!



DRONFIELD  
(0246) **412763**

DYCHE LANE · COAL ASTON  
DRONFIELD · SHEFFIELD

## Painting & Decorating

Quality work by City and Guilds trained craftsmen  
with over 20 years' experience.  
Domestic and commercial work.

*For free estimates telephone*

Geoff Latham 550865 or  
Terry Latham 749632

57 Cherry Tree Road, Sheffield S11 9AA

## Diary - Autumn 1993

Until 30 September Sheffield at War exhibition, Kelham Island.  
8 November Exhibition of Paintings, Abbeydale Hamlet.

### AUGUST

- 20-26 **UK Special Olympics.** Don Valley Stadium. Tel 736950  
25 **Councillors' Surgery.** Totley Library 5pm-6pm.  
28 **Froggatt Show.** Stoke Lane Froggatt 2pm-5.30pm.  
28-30 **Working Days.** Abbeydale Industrial Hamlet.

### SEPTEMBER

- 1-21 **Animal Welfare Display.** Totley Library.  
4-5 **Sheffield Show.** Don Valley Stadium. Tel 884812.  
7 **Assay Office - Mrs M.S.Carson.** Dore Ladies Group. Church Hall. 7.45pm.  
8 **Coffee Bring & Buy.** Christ Church Junior Choir, 58 Heatherleigh Ave. 7pm-9pm Tel 369606.  
8 **Museum Mystery Objects.** Mrs Cheryl Knox-Holmes. Dore(E)T.G Old School 7.30pm.  
11 **Dore Show.** Old School & Methodist Church Halls. 2pm-4.30pm.  
14 **30th Birthday Celebrations.** Methodist Church Tuesday Group.  
18 **Afternoon Ramble.** Christ Church Social Committee. Tel 363971  
25 **Scout Social. Meal & entertainment.** Tel 364572.  
28 **Our project TRANSPORT 17.** Methodist Tuesday Group. 7.45pm.  
29 **Councillors' Surgery.** Totley Library 5pm-6pm.

### OCTOBER

- 2 **Harvest Supper.** Christ Church Social Committee. Tel 363971  
5 **AGM. Dore Ladies Group.** Church Hall 7.45pm.  
12 **Autumn Concert.** Dore & Totley Community Arts Group. King Egbert School. 7.30pm Tickets 366212.  
12 **Alan Dawson.** Talk on the Holy Land. Methodist Tuesday Group. 7.45pm.  
13 **Memories of the QA's.** Mrs A Thomas. Dore(E)T.G. Old School 7.30pm.  
15 **Guide Bazaar. Church Hall,** Townhead Road. 7pm-9pm.  
20 **Autumn Meeting.** Dore Village Society, Old School. 8pm.  
27 **Councillors' Surgery.** Totley Library 5pm-6pm.

27-30 **"Pull the other one",** a farce by the Dore & Totley United Reformed Church Dramatic Society, Church Hall, 7.30pm. Tickets 364440.

30-31 **Art Exhibition,** by Peter Marks. Old School. 10am-5pm.

### NOVEMBER

- 2 **China-Behind the Bamboo Curtain.** Mr D Purchon. Dore Ladies Group. Church Hall 7.45pm.  
2 **Lea Gardens.** Talk & slides. Methodist Tuesday Group 7.45pm.  
6 **Bazaar,** Dore Red Cross Group, Old School. 10am-12noon.  
6 **Annual Bonfire.** 267th Wyvern Venture Unit, Parkers Lane.  
10 **With Christmas in mind.** Mrs Peggy Thorpe. Dore(E)T.G. Old School 7.30pm.  
12-13 **Competitive Music Festival.** Dore & Totley Community Arts Group. King Egbert School. For syllabus Tel 366212 or 360268.  
13 **Church Fair.** Dore Ladies Group.  
16 **Weddings down the ages.** Mr Bellwood. Methodist Tuesday Group. 7.45pm.  
23 **Dancing for Fun.** Christ Church Social Committee Tel 363971.  
24 **Councillors' Surgery.** Totley Library 5pm-6pm.  
30 **Rags to Riches.** Mr Jackson. Methodist Tuesday Group 7.45pm.

**Every Thursday.** Coffee morning. United Reformed Church. Totley Brook Road. 10.am to 12 noon. Everyone welcome.

**Every Thursday.** Ladies Keep-fit. United Reformed Church. Totley Brook Road. 7.30 to 9.00pm.

**Bottle Bank Scout H.Q.** Rushley Road.

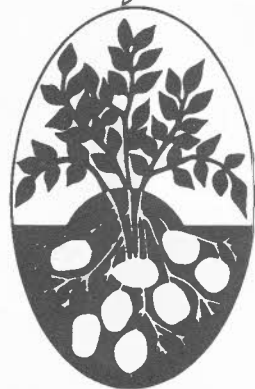
**Venture Scout Car Wash Service:** Every Saturday. (unless advised) Scout H.Q. 10am to 12noon. £1 (includes coffee).

**Waste Paper Collection.** Recreation Ground Car Park. Townhead Road. **First Saturday** each month 9.30 to 11.30a.m.

**Waste paper skip** opposite Post Office, Totley Rise.

**Every Saturday - Coffee Morning.** Dore Methodist Church 10 a.m. to 12 noon. All welcome.

## Totley Hall Farm Produce



Totley Hall Lane

25kg bags of  
**Top Quality Potatoes**  
at wholesale prices.

Open 8am to 8pm  
Monday to Saturday

**Telephone 364761**  
to confirm availability and  
price

## Brian Hill & Son

LOCAL CRAFTSMEN WOODWORKERS

Est 1970

Specialists in purpose made joinery,  
doors, windows, built in furniture,  
fitted kitchens and bedrooms.

Furniture repairs  
All your joinery needs  
Estimates free

47 Rushley Drive, Dore  
Sheffield S17 3EL  
(0742) 367384 & 307798



Dore to Door is published quarterly by Dore Village Society and delivered free to 3000 homes in the Dore area. If you are interested in submitting an article or letter, have local news to report, or wish to place an advertisement, please contact John Baker on 369025 (evenings) or write to the address on this page.

No part of Dore to Door may be reproduced in full or part, without the written permission of Dore Village Society. The opinions contained in articles in this publication are not necessarily those of the Dore Village Society.

**Dore Village Society, Limpits Cottage, Dore, Sheffield S17 3DT.**