

DORE to DOOR

DORE VILLAGE SOCIETY

No. 74 SUMMER 2004

ISSN 0965-8912

Spring Bulbs

We hope you enjoyed the crocuses in the verges on Causeway Head Road. They made a cheerful sight to herald the spring. We intend to extend this planting in October and expect the present flowers to increase and thicken out by next spring. New plantings of daffodils in Townhead Road, under the trees, were a success, although they were a little late flowering. We will be planting more in the Village in the autumn. Anyone willing to help will make a difference, and of course any donations towards the costs will be gratefully received, and any suggestions for areas you might like to see planted.

Thank you to the many people in the village who responded to the appeal for "snowdrops in the green" and who donated an estimated 8-10,000 bulbs. About twenty Brownies, Rainbows their Leaders and some parents planted these around the King Egbert Stone on the Green on a beautiful sunny day at the end of April. We look forward to next spring when these should make a wonderful show. Some special snowdrops were also planted by the seat, which we hope will also look good in February and March.

Dore Festival 2004

Festival fortnight runs from Sun 26th June to Sun 11th July. We have missed the enthusiastic support of dear Syd Crowson when planning this year's programme, but his spirit lives on.

As you will see from the programme listed on the back of this issue, many of the now popular and traditional events are included with the addition of a walking week organised by Dore Village Society. We appreciate Arroll Winning and Julie Bearpark's continued contribution to Festival. Julie once again organising the Gardens Open, with three new gardens already added to the list, and Arroll's horticultural peep Over the Garden Wall.

Of special interest will be an exhibition following the history of Well Dressing in Dore over the past forty five years. The ever popular Company will be visiting again with their production of "As You Like It" on the Village Green. We are delighted to welcome "Stray Cats" Carolina Bowie and Gilian Cally, who will be performing a musical evening in Dore Church which promises to be something different.

Please check posters in the village during June for full details of all the events.

Maureen Cope and Anne Elsdon



Snowdrops being planted on the Village in spring sunshine.

DORE VILLAGE SOCIETY

Summer Meeting

7.30pm Wednesday

9th June

Methodist Church Hall

AGM and talk by

James Dickinson on

"Old Maps of Derbyshire"

Admission Free

Oral History Collection

In conversation with Chris Fearnough.

Chris was born at 98, Townhead Road, Dore on 12th December 1922, the second child in a family of five boys and two girls. His father was John Fearnough, one of the long line of Fearnoughs who had lived in Townhead, Dore for many generations and his mother was May Ward, also from an old Dore family.

The Fearnoughs owned the seven Cromwell Cottages, (date stone 1686), and the terrace of five cottages beyond. Different members of the family occupied the cottages and the numerous children all played together in the yards at the back and in the surrounding fields and open moorland.

Chris recalls "Across the road from where I lived were fields, and below, a farm, old Jack Greaves's farm". Going down the rough and stony Townhead Road there were very few houses, in those days, until you came to Barkers Row and Planting View Cottages, (Nos.14&16), where Chris's maternal grandparents lived.

His father was a miner and worked in a ganister mine at Dronfield Woodhouse. Fred Ashby, who lived nearby, used to knock on the door at half past three in the morning and the two men would walk from Dore, down Bushey Wood, up Mickley Lane to Dronfield Woodhouse; do a hard day's work and then walk back again at three o'clock in the afternoon. "I can't see any young lads..... *continued on page 14*

Limb Lane Car Park

Over the past few weeks, a variety of improvements have been undertaken at Limb Lane car park and picnic site. The boundary of the car park has been better defined and secured with substantial wooden bollards, and the main entrance drive re-surfaced. The little used secondary track on the left has been closed off, re-soiled and allowed to re-vegetate. An information panel with details of the history of Ecclesall Woods, as well as a map of the rights of way through the woodland, has been erected and the derelict signage at the roadside replaced.

Hopefully this work will reduce problems of fly-tipping in the area and dumping of stolen vehicles. It will also provide more information for users of the area.

The Dore Village Society is working with the Council to achieve further improvements

A word of warning

A local resident was mugged on Friday 30th April at the bottom of the short footpath between Savage Lane and Gilleyfield.

The offence took place at about 5.30pm when she was pushed from behind by a youth of 15 or 16 years, who then snatched her handbag and ran off towards the centre of the village. The handbag was eventually recovered from the river at Bamford.

This incident follows another mugging in March, when a local residents, shopping bag and purse were snatched outside the council flats on Causeway Head Road.

Bus service changes

From Sunday 25th April the existing service X30 (Royal Hallamshire Hospital - Sheffield - Mosborough) was renumbered as Service 30 and extended from Hallamshire Hospital via the Service 50 route to Dore, replacing most journeys on the Service 50. Service 50 now only operates early mornings and at peak times on Monday to Friday. For further details of all bus, train and tram services in South Yorkshire, please telephone Traveline on 0870 608 2608, open seven days a week from 8am to 8pm or visit their website at www.traveline.org.uk

DORE VILLAGE SOCIETY

Registered Charity No. 1017051

The Society aims to foster the protection and enhancement of the local environment and amenities within Dore, to encourage a spirit of community and to record its historic development.

Chairman (Dore to Door)

Mr J R Baker 236 9025
8 Thornsett Gardens, S17 3PP.

Vice Chairman (Environment)

Mr R Millican 262 0012
16 Devonshire Drive, S17 3PJ.

Treasurer

Mrs M Watson 236 5666
11 Cavendish Avenue, S17 3NJ.

Secretary

Mrs A Slater 236 6710
6 Old Hay Close, S17 3GQ

Committee

Mrs L E Baker 236 9025
(Dore Show & FEW)
Mr D Bearpark 236 9100
Mr G Cope 235 0392
Mr D Crosby 262 1127
Mrs A Elsdon (Subscriptions) 236 0002
Mr D Heslop (Planning) 236 5043
Mrs V Malthouse 236 3632
Mr P Pryor 236 9831

Annual General Meeting

This years Annual General Meeting of the Dore Village Society will take place at 7.30pm on Wednesday 9th June in the Methodist Church Hall on the High Street.

After the traditionally very short formal business, James Dickinson will give a talk on "Old Maps of Derbyshire", explaining the development of maps from the 16th century onwards.

James, who is Derbyshire born and bred, works full time as a dealer in antique maps and prints. He has items on display at Chappel's Antique Centre and exhibits items at prestigious antique fairs throughout Northern England. He has promised to bring examples for people to see and buy.

Refreshments will be available at the end of the meeting.

Help with Well Dressing

For those of you who didn't get to see last year's Well Dressings, the well on the village green was dressed with a tableaux commemorating three hundred years since the birth of John Wesley, and the Guides tableaux at the corner of Leyfield road was to celebrate the completion of the renovations to the Paxton greenhouses at the Botanical Gardens.

We are always in need of new volunteers to help with making the Well Dressing. Everyone's welcome. If you've only got five minutes or you want to stay all week, please pop into the Scout Hut between June 28th and July 2nd when we'll be delighted to meet you. We're there 10am to 12 noon, 2pm to 5pm and 7pm until 9pm. There's always someone on hand to help and get you going on your first go at Well Dressing.

No one is too old or too young, we've never been known to let anyone go without putting on at least one petal. Looking forward to seeing you.

Barbara Jackson and Helpers

Village flower tubs

Everybody seems to enjoy the beautifully planted tubs which have brightened the village for the last few years during the summer.

John Giles and Angela Kingdon will be organising these again and setting out to raise funds to cover the cost of the tubs.

Unfortunately we have to raise the money specifically to pay for these, so once again we are dependant on your donations to make them happen.

If you would like to make a donation either by cheque (payable to Dore Village Society) or by cash, we would be most grateful.

Donations may be sent to John Giles, 10 Rushley Avenue; Angela Kingdon, 19 The Meadow; or The Treasurer, Mary Watson at 11 Cavendish Ave, S17 3JN.

Postal voting

This years local council elections have been put back to 10 June to coincide with the European Parliamentary elections. All 84 Council seats are up for grabs at one go, making a political change of council leadership a real possibility.

Under the recent boundary changes our renamed Dore and Totley Ward has lost parts of Lower Bradway and gained parts of Whirlow. In addition to these boundary changes the Government has decided to concentrate on postal voting in our region.

This means that although the election is technically on the 10th June, we will all have to vote earlier to ensure our ballots reach the Town Hall in time!

Counting for the local election will be on the Friday, and for the European on the following Sunday.

Over the Garden Wall

There are many interesting plants on show in the front gardens of Dore residents. A tour is being planned, with the consent of the owners, to lean over the garden wall and inspect and name their treasures and discuss cultivation in this area.

Arroll Winning of the Friends of Sheffield Botanical Gardens (FOBs) will lead the tour on Tuesday 29th June at 2pm and 7.30pm. The tour will be concentrated in a central area and will last up to 2 hours, weather permitting.

Numbers are limited and booking is essential. Please ring 236 0002 to secure a place. A donation of £2 is requested. Proceeds will be given to the Botanical Gardens Restoration Fund.

Come along with a notebook, to note the hidden garden treasures in the Village. Any specimens needing identification can be brought along on the day.

Editorial & Advertising

Dore to Door is published quarterly by the Dore Village Society and delivered free to over 3,200 households in the area.

If you are interested in submitting an article or letter, have local news to report, or wish to place an advertisement, please contact the Editor John Baker on 236 9025 or write to:

The Editor; Dore to Door;
8 Thornsett Gardens; Dore;
Sheffield, S17 3PP.

[Email_editor@dorevillage.co.uk]

Opinions expressed in articles and services offered by advertisers are not necessarily endorsed by the publishers.

No part of Dore to Door may be reproduced in full or part, without written permission.

*Printed by South Yorkshire Printers,
112 Harvest Lane, S3 8EE.*

© Copyright Dore Village Society 2004

News in Brief

Local marathon man and Sheffield doctor Richard Marks, took part in his fifth London Marathon in April raising over £400 for charity with a time of 3hrs 50min.

The former caretakers house and garden opposite the school entrance on Totley Brook Road sold for £690,000 in an auction at the beginning of March, making each of the four plots for which the council granted itself planning permission worth £172,500, before building even starts!

A recent National Road Maintenance Survey has found that the condition of local roads is worse than it was 30 years ago, with rural roads showing the greatest decline, while footways are in their worst condition since 1977.

A new Skate Park at Millhouses Park has opened, with the cost of £80,000 met by housing developers, the city council and the Friends of Millhouses Park.

Two new seven-a-side pitches are being considered for the top field of the recreation ground.

Sheffield is ahead of Government targets for the recycling of waste, having trebled the city's recycling rate over two years to 12.2% of rubbish compared with the Government's March 2004 target of 10%, but will have to do better still to reach the target of 18% set for April 2006.

The car park at the Limb Lane picnic area has been resurfaced and is now locked each day at dusk.

Dore Show 2004

This years Dore Show will take place on Saturday 11 September in the Old School and Methodist Church Hall - be sure to note the date in your diary. Brass band, entertainment and side displays of interest to everyone as usual.

There will be over 70 classes for you to enter for or come and see, ranging from vegetables to paintings, flower arranging to childrens' exhibits. The full schedule will be available from Greens on Causeway Head Road shortly.

For those keen photographers wishing to plan ahead, the 3 photography classes will be: Colour - "Child's Play" - min 7" x 5; Colour - "Summer Time" - standard or panoramic size only & unmounted please; and Black & White - Open - min 7" x 5.

The Show has become an established part of village life, largely thanks to the exhibitors and those who plan and run the event on the day. As always many hands make light work! If you can offer a little help on the day please contact the Show Chairman 236 4257 or Secretary 236 9025.

PUBLISHING DEADLINES

The next edition of DORE to DOOR will be published in mid August.

Please forward items for this Summer issue to the address on page 2 by

Friday 30th July 2004.

Lift a glass

This year Sheffield & District branch of CAMRA celebrates its 30th anniversary. The inaugural meeting took place in the Travellers Rest in Holmesfield in April 1974. Back then the branch took in all of South Yorkshire, but as membership grew new branches opened in Barnsley, Rotherham and Doncaster.

Now in the year 2004, the membership in Sheffield alone is 682, with 1,545 CAMRA members in South Yorkshire, and 71,458 nationally.

What CAMRA does is look after something that is a part of many adult's social lives - they are simply about good pubs and good beer. They highlight what is good, which is what their Pub of the Month awards is all about. They also campaign to stamp out the bad practices that exist in the pub trade, such as short measures, badly kept beer and restrictive licensing hours.

You are welcome to join them as they celebrate their 30th anniversary. Events include guided pub crawls, brewery visits and award presentations, with the biggie being the 30th Steel City Beer Festival at St Phillips Social Club from 30th September to 2nd October, which will feature a range of up to 100 beers, live music and more.

Membership cost £16 per year, concessions £9. Write to CAMRA, 230 Hatfield Rd, St Albans, Hertfordshire, AL1 4BR or for details of local events phone Myk Eccles on 07751 064053 (mobile)



- Basic PC Usage
- Windows and Office Software
- Internet and Email
- Problem solving

call Andy Hogg on 07785 536261
andyhogg1960@yahoo.co.uk

TEMPTATIONS

Toys for Boys and Girls of all ages

JIGSAW SPECIALISTS

Mail Order Service Available
MATLOCK STREET BAKEWELL DE 45 1EE
Tel: 01629 812 085



The Devonshire Arms, Dore

Sky TV
now installed



Quality and service assured
Morning Coffee 11.30am onwards
Food served lunchtime 11.30am-2.30pm
Dinner 5.30pm - 9pm
Bookings now being taken

Telephone Tina or Emma on
0114 235 1716

Six different cask ales available
Quiz night Wednesday 9.30pm
Live entertainment Thursdays, 9.30pm
14 High Street, Dore, Sheffield S17

Letters

Dear Sir,

125th Sheffield (1st) Dore Guides
(Meeting place - Dore Church Hall)

This year our Guide Unit is 50 years old and to celebrate this, we are having a Thanksgiving Service and Party in September.

We are trying to make contact with as many "old" Guides as possible to send them invitations. If you know of anyone who was a member, please could you let us know their names and addresses.

Judith Jackson (Cropper) 235 0985;
Pamela Butterworth (Houghton) 236 2603
or Email - pambutty@blueyonder.co.uk

Pam Butterworth

Dear Sir,

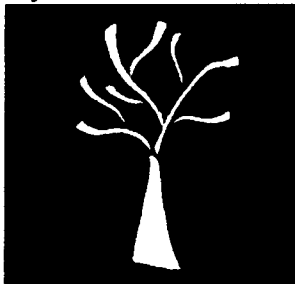
We are writing further to Councillor Anne Smith's letter in the Spring issue.

We deplore what we see happening in our neighbourhood. Gardens are being sold and perfectly good properties demolished to make way for multiple developments. Rubbish skips pop up like daffodils in Spring, but stay around much longer. Builders' vehicles are parked on kerbs or close to road junctions, apparently with impunity.

Another cause for concern is the number of extensions being built. Whilst most of these are created in harmony with the existing property and with thought for neighbours, unfortunately this is not always the case.

Your readers may not be aware that under current legislation (Permitted Development regulations), it is possible to build an extension without planning permission, however unsightly or intrusive it may be. This amounts, in our view, to a charter for the unscrupulous to avoid proper consultation processes and to ride roughshod over the privacy of neighbours.

Sophie Beckerman



Tree Surgery

Planing, pruning, felling, stump-grinding etc.

Free advice & estimates.

Fully qualified and insured.

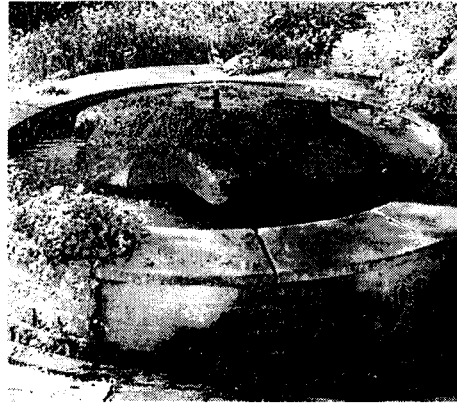
154 Cromwell St. Walkley, Sheffield, S6 3RP

Tel: 0114 2326888

Mob. 07734 155 091

Arising from recent stressful personal experience of this, we are lobbying John Prescott's office to have the legislation amended. We have already gained the support of Richard Allan MP and our local councillors. We ask the residents of Dore also to make your voices heard. Support your neighbours and your local councillors and help to protect our community.

Don and Edna Johnson



A giant cog wheel shaped stone, now the central element of a garden water feature.

Dear Sir,

Mystery Stone

In 1992, whilst digging out an old dead tree root, I came across a corner of the above fountain 'centre stone'. It wasn't until some months later, when I wanted a lot of stone for elsewhere in the garden that this bit of stone came to mind.

Initial thoughts of a five minute dig turned into an excavation of some proportions. As each bucket of earth was removed its size and the excitement grew more and more. - (was this a marker stone for the missing altar plate?) Being well versed in the gentle art of moving large pieces of machinery, it wasn't long before the stone was winched to the surface and its total size exposed.

It has 6 equally spaced projections around the circumference, which makes it look like a giant cog wheel. The overall diameter is about 56" and it is 8" thick. There is a taper towards the outside edge. It has a 4" diameter blank hole that is 6" deep in the centre. The calculated weight is about 1 ton (in old money).

A photograph quickly dispatched to Weston Park Museum drew a blank - they had no idea what this stone was, its use nor its age. No one else has any idea either and it is still a mystery waiting to be solved.

My own experience in the field of industrial archeology is limited to building a working model of Thomas Newcomens first steam/atmospheric engine of 1712.

A Crookes, Five Trees Close

Ed. Can anyone who can suggest the origin and purpose of the stone.

Dear Sir,

Re the junction by the Beauchief Hotel:

Now that the alterations (built at great expense and disruption) have had a settling-in period, the traffic flow appears to be no better (probably worse) than before.

The filter lights, that were almost

unanimously requested (I attended the council's arranged meetings) have not been provided, therefore it is still dangerous to turn against oncoming traffic. Traffic now backs up more than previously, and as I live in close proximity I can vouch that this is the case.

I should also point out that even after spending a large amount of money on this junction, there is still a problem with standing water. I feel that this issue could have been addressed during the alterations.

Mr T Nash Abbeydale Road South

Dear Sir,

Oh! How I love Dore to Door. I read and re-read them. My friend Mavis (Hudson) Hastings saves them for me and I collect a batch on my visits 'home'.

I went to Dore School from age 4 ½ to the 11+ and my name is on the church cradle roll and although about to turn 70, I remember my childhood years at Dore Village school, and my home on Busheywood Road clearly. So ladies, when you write to Dore to Door, please include your maiden name, for those of us who missed your marriage news.

I walked to school with, (and sat next to Mavis), up Busheywood, through the turnip field, round the oak tree and up Savage Lane. Heaven help us if we were late and Mr Greaves' cows were finished milking, because my sister Mabel was terrified of those gorgeous big eyed cows.

Miss Dobbs, who saw all four of us Hodgson girls through our early years, also walked this way to school - except she started off in Dronfield Woodhouse, and was never late. If she had gone past, our mother shooed us off, out of the door pretty smartly. I remember Miss Palmer coping with 3 age groups during the war years and Miss Talbot with 4, as the big children were often kept on at Dore School rather than run the risk of travel across Sheffield and the possibility of day light raids. Mr Spoke recalled from retirement when our young headmaster was called up for the navy. He drowned and the hymn we sang - 'Those in peril' - still gives me the same sad feeling I had all those years ago. Then there was Miss Davies.

I also recall those poor bewildered evacuee children who briefly entered our lives; the air-raid shelter built around the edge of the big yard; and the practices and gas masks that I thank god we never needed. Yes, - what did happen to the big doll's house, Miss Dobbs allowed us little girls to play with, to soften the blow of saying goodbye for the first time, to our mothers? I recall giggles and laughter from the cloakroom at assembly as the Bradshaws and McClorays 'did their own thing' being of the R.C. faith - and extra days off for 'Saints days' - we didn't understand - but felt envious.

I love the pictures of the village - as was - I was saddened to see that 'sweetie' shop is now a house; the cobbles; the lady who made brandy snaps out of her sugar ration; the little fish and chip shed and the silver painted jewellers. The man who added

names to the gravestones and put up with our 1001 questions. Now I'm sad that the big trees in the grave yard seem doomed. The smell of lilies will always remind me of being 'let out' after a funeral, as in respect, the playgrounds were always silent for these. The big key from the cloakroom door being put down my back for a nose bleed. I could go on but my aerogramme runs out. I'm coming to Dore again in September 2004, hopefully to collect more Dore to Door.

*Elva (Hodgson) Smith
New South Wales, Australia*

Dear Sir,

I would like to express my thanks and appreciation, to the small group of Dore Village Society members, who painstakingly planted 2000 crocus bulbs along the grass verges on Causeway Head Road. We are all reaping the benefit now, as the flowers are beautifying the area.

Doreen Cobain

Dear Sir,

Just a note to say how much we appreciate the efforts of the bulb planters now that the crocuses have flowered on Causeway Head road. I'm sure you will receive many more similar comments from other residents.

John Putsey

Ed. Yes the bulbs have flowered to general approval, and provided council grass cutters, builders and car parkers are careful, we can look forward to increasingly impressive shows in the years ahead.

Dear Sir,

Seeking information, particularly location of crash, regarding Blenheim bomber Z5746 which crashed in the Brown Edge/Ox Stones/Ringinglow area on 26 January, 1941 killing pilot and two crew. Very grateful for anything. Please contact me on 01332, 361058, or, patrickjcunningham@ukonline.co.uk

Pat Cunningham

Dear Sir,

Re: Long Acre Development, Newfield Lane, Dore

Many residents of Dore are dumbstruck at the way in which Planning is proceeding around Newfield Lane.

Only a couple of months ago the Planning Department announced that the removal of trees in Newfield Lane was prohibited. Now it appears that a new access is planned to the Long Acre development by Westbury Homes leading through a fresh cutting from Newfield Lane.

A 20-foot-wall constructed by Mr Hinchcliffe already contains two entry points and there is also the main gate into Long Acres. Along with two modern developments already in place on either side of Long Acres, the new site for 37 dwellings is served perfectly adequately.

Newfield Lane itself does not lend itself to so much additional traffic. Neither the soft verges nor the wall to Wagg Wood with its abrupt drop can have been considered sensibly, at least not without drastic changes to this country lane at the edge of the Green Belt. Pavements and

street lighting and the removal of trees would devastate the area.

I trust that my letter will be useful in your petitioning against the Planning Department.

Dr A.D.Andrews

Dear Sir,

I lived in Causeway Head Road for about twenty years and then I moved down into the village - High Trees- nearly five years ago.

Whenever I rounded the corner from Townhead Road into High Trees I looked at the large grass verges on the corner and so often thought - these need daffodils. They would look lovely under our 'High Trees'

So when the Village Society started planting bulbs on the village verges I suggested this! Then! One terrible morning (thick damp mist) I was walking down the road and there, hardly visible in the mist were lots of people, including committee members - planting bulbs. Not only was it a terrible morning but the ground was rock hard.

Now they are in full bloom and look wonderful. Thank you very much Dore Village Society. I am delighted.

Pam Conway

Dore Boundary Walk

Saturday 19th June

See posters in the village for details
or phone 236 5043

The Castle Inn

Danielle and Simon welcome you to your friendly local, with traditional ales and home cooked food

Open 12 noon - 11pm Monday to Thursday

11am - 11pm Friday & Saturday

12 noon - 10.30pm Sunday

Quality selection of fine wines

Quiz night every Wednesday evening

Twentywell Road, Sheffield, S17 4PT

0114 236 2955

Are you searching
for answers?

**SHELTON
ASSOCIATES**

We provide a comprehensive
range of Market Research
Services to help you fully
understand your market

Call free on

0800 026 4360

168 Baslow Road, Sheffield S17 4DR

DESIGNER CHILDRENSWEAR

SQUIRTS is the location
in South Yorkshire &
Derbyshire for the very
latest kids designer clothing.

We stock the following big names: Quiksilver • Mini Man
Chipie • Guess • Caterpillar • Confetti • Lili Gouffrette
Catimini Sarah Louise • Marc O'Polo • Ben Sherman

GIFT VOUCHERS AVAILABLE

SQUIRTS DESIGNER CHILDRENSWEAR

Telephone: 0114 235 6725

OPEN 9.30am - 5pm MONDAY TO SATURDAY

Jean recalls

On the 25th January 1953, a tragedy occurred on the Hathersage Road between the Dore Moor and Fern Glen Farm, as a result of which 3 young people lost their lives. David Tomlinson aged about 23 of Baslow Road, Totley, but previously of Causeway head Road, Dore, shot and killed Phillip Tranfield, a taxi driver of Carterknowle Road, Sheffield, and Grace Fowler aged 18 from Doncaster. At the time she was employed at Fairthorn Convalescent. David then shot himself.

The accident was discovered by Henry Bailey, a farm hand from Fern Glen Farm, who was on his way to buy cigarettes for the farm from The Dore Moor. Henry gave evidence at the Inquest. Rumour had it that he bought his beer & fags before mentioning what he had seen.

We were all upset by the incident, as we had known David and his family for many years. Our sympathy went out to Davids mother and elder brother, especially as this was not the only tragedy in their lives.

David was always a bit on the wild side, but I don't think anyone expected this. Though we have never forgotten this, it is thanks to Trevor Biggin, who spent quite a bit of time searching the archives and finding the details, as published in the press on the 27th January.

During the 50's and early 60's Mrs Jackson, mother of Peter, Scout master & Plumber, ran Whist Drives to raise money for the Scouts. At first these were held in the Chapel, but later in the new Scout Hut. She would have me help with the teas. I dreaded that I would be asked to make up a four. The ladies who played were like DEMONS. You'd have thought they were playing for the Crown Jewels and not the customary packet of biscuits.

Once a year the Scouts held a Jumble Sale. We spent a week with the men and boys collecting and the women sorting. What an experience that was. Some of the things we had to handle beggar belief.

Usually there was good comradary, but occasionally there would be a fallout, especially when newcomers tried to tell the old hands what to do. Joyce and Rita



Dore Gilbert and Sullivan Society presented the last of the G & S operettas The Grand Duke at The University Drama Studio, Glossop Road in late April. The cast visited Chatsworth House for this photo opportunity with the Duke of Devonshire (front centre) who sadly died on Bank Holiday Monday 3rd May.

always did the shoe stall. They were always staggered at the number of odd shoes at the end of the day, and also the pairs that remained which they had never seen before. We assumed that some people had changed their old pair for ones a bit better.

Dealers used to turn, up from the first night. Mr Woodhouse wouldn't let them in until the Friday, but in later years after Walter had gone they managed to con their way in. Vultures would be too kind a word!

Come the day of the sale and we stall holders had to fight our way into the hall. It could be quite scary. I am certain that far more stuff was nicked than was payed for.

On one occasion Mrs Jackson and I struggled to carry a sack, which had been dumped on her door step round to the hut. We were just coming away when Mr Nixon, the Cub Master arrived and accused us of helping ourselves. We were not happy about that. He did apologise to us later after Don had explained the situation to him. Just shows what jumping to conclusion could lead to, because we might have said we where not helping the Scouts ever again. I think Syds diplomacy helped to save the day on more than one occasion.

Jean Dean

First/Mainline route 30/50

The following is an extract from the text of a letter sent to The Transport Executive and copied to ward councillors at the end of April. Changes to the 50 route have created widespread concern and protest.

Dear Sir/Madam

My complaint is that in order to improve profitability, First/Mainline has combined and rerouted the 50 bus route from Dore to the City Centre, avoiding the Railway and Sheffield Bus Interchange during off peak periods.

This leads to considerable inconvenience to Public Transport users throughout the Dore and Ecclesall area, particularly those of us who regularly use the service to catch trains or National Express buses.

Surely, an equally economic service can be offered by rerouting this new 30 service via the Sheffield Interchange then on to the Parkway, an even simpler route towards Handsworth and beyond.

Would you please take up this issue with your service supplier and let me know the outcome.

Ken Norris, Middlefield Close

Dore Health & Beauty

Providing the very latest in cosmetic treatments and technology for people who really care about their appearance and well-being

- CACI Quantum - Face & Body Toning
- Slim-Up - Hardens, Slims, Models Quickly
- Future Tec - Skin Regeneration System
- Germaine du Capuccini Skin Care Products
- St. Tropez - For a Natural Healthy Tan - 'used by the stars'
- Creative Nails - Nail Extensions, Manicures and Pedicures
- Wedding Make-up and Hen/Pamper Parties

CACI QUANTUM
Non-surgical face lifts
and body sculpting

ST. TROPEZ

FUTUR-TEC
SKIN REGENERATOR SYSTEM

acu...
Fast, Gentle
& Permanent
Hair Reduction

No more painful waxing,
messy razors
or tedious electrolysis

0114 235 2005

2a Causeway Head Road, Dore, Sheffield S17 3DT

Planning Matters

Knocked back. The good news is that the application to build 14 flats in two, three storey blocks at 123 Dore Road was refused by the Planning Authority on 17th March. To have granted planning consent for that application would have been disastrous as the proposal was a serious over development of the site and out of keeping with the locality. The separate application to demolish the existing house on the site and build a much larger one is still under consideration.

How Green is the Green Belt? An application made, as long ago as January, to convert farm buildings at Moorside Farm on Long Line into six dwellings and the building of two additional dwelling houses has now been modified. The applicant has withdrawn the proposal in respect of the two dwelling houses, which is good news, but the remaining six units are still under consideration. It would be a travesty if consent were given for this proposal as the property is in a very vulnerable part of the Green Belt.

Knock them down and pile them high. I reported on an application made, over a year ago, to demolish the old Vicarage at 234 Abbeydale Road South, opposite the bottom of Twentywell Lane, and build a four storey block of flats. The application was refused but the owners have now reapplied for development, including demolition of the adjoining bungalow, conversion of the Vicarage into four flats

and the erection of a further 31 flats. This would inevitably cause more traffic congestion at the bottom of Twentywell Lane.

How quiet is a Quiet Lane? There have been a considerable number of objections to the proposed new road into Newfield Lane from the Long Acre site where it is proposed that 37 units would be built. This would of course cause untold damage to the quality of Newfield lane and the only reasonable access to the site is through the Knowle Green development.

David Heslop

Did you know

Have you looked at local house prices recently? Is the world going mad? Prices have rocketed, far faster than inflation or wage rises. The result is a relative transfer of wealth within the community towards those that own property.

Most of us locally might benefit in the short term, but how can younger people even get onto the property ladder in the first place, and what inequalities are we creating for the future?

Road safety concerns. In April there was yet another serious accident on our local section of Hathersage Road, this time just before the junction with Limb Lane as you head into the city. Three people were taken to hospital, with one needing to be cut from a wrecked car by firefighters.

Despite requests from the Dore Village Society and others for a review of safety

along the stretch from Limb Lane to Dore Moor Inn, nothing has happened, "due to priority schemes in other parts of the city".

It seems that installing humps or creating road narrowing on virtually every side street is more important than tackling real traffic Black Spots. Not only that, we seem to still be creating humps while other councils are removing them. Just think how many pot holes could be filled with all that wasted tarmac!

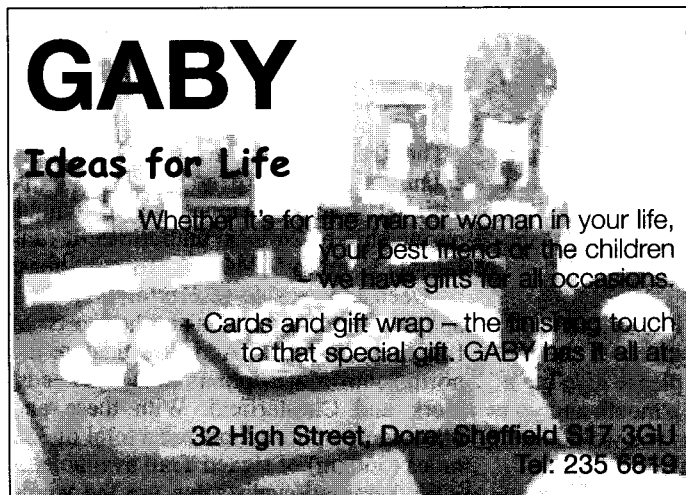
Elsewhere in the village, we are still waiting for news on designating Whitelow Lane a 'Quiet Lane' with associated speed limits to help the safety of walkers and horse riders. All it would cost would be a few road signs, but still we wait.

Amusingly (well it would be if it was not all too true), the Council's own consultants recommended Newfield Lane to be designated a 'Quiet Lane', while the planning department happily go along with proposal to increase traffic on it, and make it into another urban street, with no doubt curbs, footpaths and neon lighting!

Finally spare a thought for the motorist. Not only are petrol prices rising, but it is becoming increasingly difficult in some areas to even find a petrol pump. Wafer thin margins and competition from supermarkets, plus increasing land values, is tempting operators to close petrol stations and sell sites for building.

Soon we will be planning journeys around the availability of fuel, and trips to the supermarket will be to fill up with petrol not the weekly groceries!

Doremouse



GABY
Ideas for Life

Whether it's for the man or woman in your life, your best friend or the children we have gifts for all occasions.

• Cards and gift wrap – the finishing touch to that special gift. GABY has it all.

32 High Street, Dore, Sheffield, S17 3GU
Tel: 235 6819

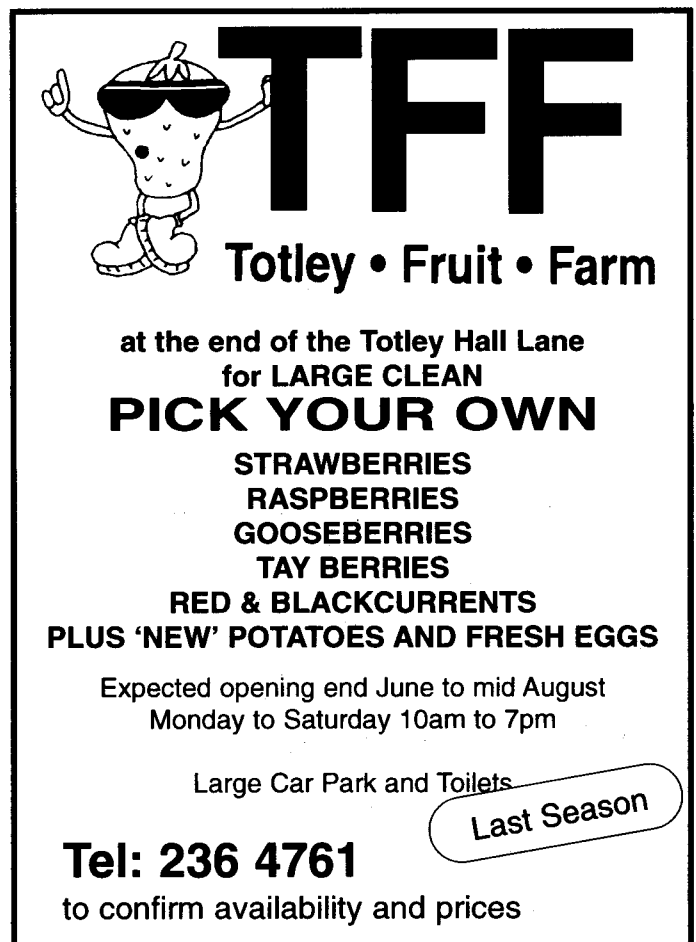


GENTS HAIRDRESSING
Don Allott
at
Fred & Ginger's

162 BASLOW ROAD
SHEFFIELD, S17
TEL: 235 0362



Wednesday, Thursday, Friday & Saturday from 9.00am £6.30
Wednesday & Thursday Pensioners and Children Special £5.00
Walk in service and appointments available



TFF
Totley • Fruit • Farm

at the end of the Totley Hall Lane
for **LARGE CLEAN**
PICK YOUR OWN

STRAWBERRIES
RASPBERRIES
GOOSEBERRIES
TAY BERRIES
RED & BLACKCURRENTS
PLUS 'NEW' POTATOES AND FRESH EGGS

Expected opening end June to mid August
Monday to Saturday 10am to 7pm

Large Car Park and Toilets

Tel: 236 4761
to confirm availability and prices

Last Season


Gala Day 2004

Well, Gala day fast approaches once again. What a wonderful family atmosphere the Gala generates, giving all of us the opportunity to meet old friends and make new ones. This year's Gala will be held on July 10th on the recreation ground starting at 2pm and finishing at 6.30pm. For many of us, this year will be a poignant occasion as it will be the first Gala we will have experienced without our good friend and avid supporter of the Gala and all things scouting, Syd Crowson. I am sure that we will all spare a thought for Sheila and the rest of the family and know that Syd will be with us in spirit throughout the Festival fortnight and especially on the day itself.

Once again, last year was a great success with some 4,000 people attending and perfect weather; the combined profit from Gala day and the Sheffield Scout and Guide raffle exceeded £8500. All of this was distributed to children's charities, the majority being used to assist the running of the local Scout and Guide groups. We were also able to make donations to The Rowan School (special needs) situated on Durvale Court, Woolley Wood School (special needs) situated in Shiregreen, the Sheffield Children's Hospital, the Starlight Children's Foundation and Sheffield Homestart. In addition to the above, other Scout and Guide groups outside Dore that sell raffle tickets retain 50% of their sales.

This year the focus of our fund raising activities will be the long overdue refurbishment and development of the scout hut. Planning permission has been obtained for this important activity so please bring yourselves, families and friends and spend freely on the day!

Although the organisation of the event

 Eat
Drink
Enjoy

Speciality Coffee and Tea
including Fairtrade, Organic and Decaffeinated

Deli counter serving only the best
Continental foods

Delicious sandwiches
made with speciality breads

Freshly baked bread and pastries

All meats cooked on the premises using our
own fresh Deli produce

Daily specials board to include fresh soups,
salads, quiches, pasta dishes

Alfresco tables - cold drinks

Monday - Saturday 9.30 am - 5 pm

Telephone orders and take-outs

Outside Catering Service
Dinner parties, functions, children's parties
Premises can be booked for private
functions in the evenings

Tel: 0114 235 3285

148 Bradway Road, S17 4QX

started last October, from May the preparations become more frenzied with Scouts, Cubs, Beavers, Guides, Brownies and Rainbows, along with their leaders and 130 volunteers of the community, making side shows, stalls, bottle collecting and selling raffle tickets.

With the success of last year in mind, the committee has decided to keep the same formula for this year retaining many of the old favourites including Dog of Dore, Fancy Dress and It's a knockout. There will also be fairground rides, our usual stalls and games not forgetting the traditional sheep roast. The Dore Fame Academy will again feature giving anyone, especially the younger members of our community, the chance to display their musical talents; if you are interested in booking a slot during the afternoon please call Mark Sadgrove on 01246 269057.

As in the past the success of some of our stalls is dependent on you, the community. May we once again prevail upon you and seek your contributions for the following:

Donations for the White Elephant Stall:-
Contact: Rachel Kelly Tel: 2367251

Plants for the Plant Stall:- Contact:
Joanne Price Tel: 2362488

Programme Advertising :- Contact: Mark
Sadgrove Tel: 01246 269057

Bottles & Tinned Groceries for the Bottle
Stall:-

Please note the dates for collection this year will be weeks commencing 29th June and 5th July. Collections during these weeks will be made by the Scouts, Cubs, Guides and Brownies. If we fail to visit your home please could you donate in the evenings of the collection week at the Scout Headquarters on Rushley Road. (Please, no out of date or damaged products, thank-you.)

For any of you who are keen gardeners, if you can pot up a few more seedlings and spare us a few for the plant stall that would be much appreciated.

If you require a collection for any of the above, please telephone Mark Prangell (Chairman) 236 7587.

For those of you would like to join us on the committee and be involved in the organisation of the Gala, please give me a call. We get together once a month and you can be involved as much as you would like. Fresh ideas are always welcome.

The success of Gala day is dependent on the community, whether you are on the committee, help on the day, advertise in the programme, or just turn up. Without your support the Gala would not take place. Please continue to support your local Scouts and Guides and other children's charities. Full details of the programme will appear in the Gala Magazine to be distributed shortly.

Finally, I would like to make you aware of a wonderful opportunity to own a very high quality video record of Gala Day 2003. The film was shot and produced by a member of the village community, Jane Lavender, and captures perfectly the energy, enthusiasm and enjoyment of this important community day. Copies of this

marvelous film can be ordered from Jane on 0114 262 0238 and all profits are shared between the local Scout and Guide groups.

I would like to take this opportunity to thank you for your support in the past and look forward to your continued support this year. See you on the 10th July.

Mark Prangell
Gala Committee Chairman

History and pictures

Brian Edwards has been researching the history of Totley and Dore for more years than he would like mentioned. The results have been published in a number of books, all illustrated with his excellent drawings and water colours. Some of these books are out of print, but Brian is currently working on a revised edition of his book on Totley Tunnel, due out in the autumn, and a new book on Calver.

Most recently he has completed an index to records/sources on Totley and to a lesser extent Dore. This has been transferred to disc and copies will be made available to the Sheffield and Matlock Archives, along with Totley library and the Dore Village Society.

More immediately Brian is holding an exhibition of watercolour and pen & ink drawings with Rod Kay at Baslow Village Hall, on June 26th & 27th, 11am-4pm. Free admission. You can also join him for a historic walk around Totley and parts of Dore during the Dore Walking Week on 30th June, meeting 10am at the Cricket Inn. Numbers are limited so please pre-book via 236 9025.

Trans Pennine Trail

The Trans Pennine Trail (TPT) was the country's first largely purpose built, national trail, developed by a unique partnership of 26 local authorities. It runs for 215 miles (346km) coast-to-coast between the seaside resorts of Southport and Hornsea, linking also the ports of Liverpool and Hull. Added to this are the north/south route options between Leeds, York and Chesterfield. With these and other route options there are a total of 350 miles (560km) of signed Trail available.

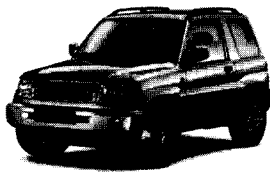
Walkers and cyclists can use the whole TPT with horse riders also able to use many sections. Easy gradients and surfaced paths make much of the Trail suitable for people using wheelchairs or pushchairs.

Three detailed maps cover specific sections of the trail. These are priced at £4.95, and are available from: Trans Pennine Trail, Central Offices, Kendray Street, Barnsley, S70 2TN. Tel. 01226 772005 www.transpenninetrail.org.uk

The Traditional Heritage Museum at 605 Ecclesall Road, S11 8PR, (300 yds below Hunters Bar) will be open on Saturday 29th May; Bank Holiday Monday 31st May; Saturday 26 June; and Saturday 31st July.

GORDON LAMB

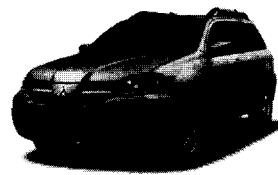
FREE SUPAGUARD WITH EVERY NEW CAR PURCHASED BELOW[†]



Shogun Pinin 3dr
from £12,999



Pre-owned MKII Lotus Elise
from £18,499



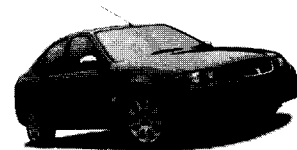
Mitsubishi Outlander
from £16,999



Rover 25 Impression
From £7,995
SAVE £1,520



City Rover Solo 1.4 5dr
From £5,995
SAVE £500



New Rover 45
From £8,995
SAVE £2,900



Saab 9-3 Saloon 1.8
from £16,995 or
From £199 per month**



New Lotus Elise MKII
from £22,999



Saab 9-3 Convertible
from £24,305 or
From £299 per month**



Telephone: 0114 262 5000
1 Pomona Street, Sheffield. www.gordonlamb.co.uk



OPEN 7 DAYS Mon-Fri: 8.45-6.30pm.
Sat: 9.00-5.30pm, Sun 11-4.30pm

*Price correct at time of going to press. Fuel consumption in mpg (litres/100km): Urban 24.1 (11.7), Extra Urban 42.2 (6.7), Combined 32.8 (8.6). CO2 emissions 206g/km. All figures for Saab 9-3 Convertible 1.8t Linear fitted with manual gearbox: £24,305 OTR. Model shown is Saab 9-3 Aero Convertible fitted with manual gearbox, £28,908. All figures for Saab 9-3 Sports Saloon 1.8i fitted with manual gearbox: £16,995 OTR. Offer applies to all cars registered between 01/04/04 and 30/05/04. **Finance facilities through Saab Contract Hire. Written quotations available on request. Indemnities may be required in certain circumstances. Business users only. This offer cannot be used in conjunction with any existing quote or offer. Please ask dealer for full terms and conditions of the offer featured. †To qualify for the Free Supaguard, present this advert to any Gordon Lamb dealer at Pomona Street Sheffield against the purchase of any new vehicle displayed in this advert from Gordon Lamb. Offer ends 31/08/04 Subject to status, terms and conditions apply.

Dore churchyard project

Several years ago the churchyard was declared closed. This means that the responsibility for day to day maintenance e.g. mowing rests with the local authority. The responsibility for the care of paths, boundary walls and (where families cannot be traced) monuments belongs with the church. The PCC has a long term plan already in operation, for the care and replacement of the trees.

Burial in the churchyard can still be a right for parishioners with family graves, but the addition of gravestones, benches or extra trees is not and it cannot be a private transaction.

The Role of the Churchyard. It should enhance the Church as a place of Christian worship and witness in the community. It is consecrated to its purpose of Christian burial and its care and treatment must have due regard for the context in which it is set; it is a key feature in the centre of Dore Village Conservation Area.

There has been a revolution in recent years in public attitudes towards nature conservation, and churchyards are increasingly being recognised as important sites in terms of the habitats they provide for a wide range of flora and fauna. With a carefully managed programme, the churchyard could be a conservation area in the middle of the village.

It is also an historical record for the community and whilst it is unlikely that any of the monuments are important enough to be listed in their own right, their value lies in the group as a whole.

The churchyard could thus provide an environment for peace and reflection and become an educational asset.

People's Places Award Scheme. With these thoughts in mind, we have successfully applied for a grant from the

ABBEYDALE MINIATURE RAILWAY

Sundays 1pm - 5pm approx
May 30th and 31st (Bank Holiday)
June 6th and 20th
July 3rd & 4th (Open Days/Exhibition)
July 18th. August 1st & 15th
You can find us in Ecclesall Woods, along Abbeydale Road South.
The Society warmly welcomes new members - if you are interested in model engineering of any kind please enquire tel 236 9002.
www.micksa.supanet.com/smee/

People's Places Award Scheme, which is an organisation supporting community based wildlife projects. We have been awarded a total of £8,191 and we aim to use this money to improve safe access to graves, by leveling ground & resurfacing paths, clearing and preparing the ground in designated areas for the sowing of wild meadow seed, repair & rebuild walls and improve seating where necessary. The project will be spread over two years and will begin as soon as possible. Much of the work will be carried out by volunteers. If you would like to join a list of volunteers I would love to hear from you on 262 0106.

We hope that you will enjoy watching our progress and be pleased with the result.
Rosemary Harrison Project Co-ordinator

Picture Dore

The Sheffield Local Studies Library runs a web site containing pictures of Sheffield past at www.picturesheffield.com There is a good selection of old pictures of Dore from which small copies can be made for personal use, or for most larger prints ordered.

Wanted! Young Rangers

If you are aged between 10 and 16 and interested in local wildlife, or know someone who is, you might be excited to hear about Sheffield Wildlife Trust's new "Young Rangers" scheme.

This exciting initiative offers young people the opportunity to get involved in every aspect of managing Sheffield's wonderful nature reserves. You'll get the chance to develop skills in lots of different and interesting areas: surveying plants, animals and habitats, practical work, patrolling, learn survival skills and map reading, writing articles for newsletters and Wildlife Trust publications. We are looking for individuals who want to take part in the Young Rangers scheme, and will be holding our first meeting in June.

If you would like to find out more, contact Annabelle Kennedy by writing to her at Sheffield Wildlife Trust HQ, 37 Stafford Road, Sheffield, S2 2SF or emailing a.kennedy@sheffieldwt.cix.co.uk

Walking Week

Monday 28th June to Sunday 4th July

Welcome to the first Walking Week organised by Dore Village Society and its Wyvern Walkers Group. The idea is to provide a range of interesting local walks, including something for everyone to enjoy, whatever their abilities and fitness.

Each day a different walk will be available, so you can pick and chose whatever appeals to you. Examples include a 5 mile walk from the village to Ox Stones and back and a history walk around Totley and parts of Dore led by Brian Edwards. Numbers will be limited on some of the walks, so please check posters in the village for booking details or call 236 9025.

DOREVIDEO.com

Visit us at
www.dorevideo.com

Online information includes:

- New film releases
- A-Z film listings
- Film reviews
- Playstation 2 games
- Movie Posters
- VHS and DVD sales

SHOP OPEN 10.00AM 10.00PM
EVERY DAY

26 Causeway Head Road
Dore, Sheffield
Tel 0114 235 3588

DOREVIDEO.com

Ramble along to



FOOTHILLS

The Walking Specialists

NEW INSTORE ROHAN SHOP

Rohan's excellent range of performance clothing and travelware

EXPERT BOOT FITTING

Our staff are trained to solve boot fitting problems and we back this up with our Boot Fit Guarantee

ALL THE FAMILY'S NEEDS

Large selection of outdoor clothing and equipment for all the family - at the best prices

FREE GUIDED WALKS

Free midweek guided walks

Tel: 0114 258 6228 Fax: 0114 258 4810
shop@foothills.co.uk www.foothills.co.uk
11 Edgedale Road, Sheffield, S7 2BQ

Step into summer
with a 'spring' offer

Mini Manicure	£5
Mini Pedicure	£5
Mini Facial	£5

Also available: Reflexology,
Hopi Ear Candling,
Reiki, Indian
Head Massage,
Aromatherapy
Massage and
St. Tropez Tanning

For advice, appointments or gift
vouchers, call:

Liz O'Neill - Complimentary Therapist

Dore 2356580 or 07855 299423

RELAX YOUR WAY TO BETTER HEALTH

Guides for India

Next door neighbours, 16 year olds Rebecca Dray and Sophie Burgess, who are members of the St. Blackmoor Ranger Guide Unit based in Doer, have been selected to represent the Girl Guiding UK at International Camps in India. They were selected after taking part first in local and then regional selection camps where they had to demonstrate to the selectors that we had the skills and personality to make a contribution to the planned overseas camps. The girls are the only guides from Sheffield to have been selected and join only a handful of Guides from all over the country who are going. The main purpose of these

camps is to foster international relations. Whilst they are there they will also be working together to help the local community, running a camp for local underprivileged children aimed at providing them with an educational experience as well as their having fun.

They will be visiting India in July, but as part of the challenge have to raise £1,300 each to fund the cost. So far they have made and sold Valentine's cards, packed bags at the local supermarket, made and sold parking at a local event and ran an India-themed night. Any contributions to their fundraising would be most welcome. You will probably see them around over the next couple of months undertaking various fund raising activities.

You can contact them via the Guide Unit or Dore to Door.

Help with Autism

A new local support group has been set up this year for the parents and carers of children on the Autistic spectrum. The aim includes holding monthly meetings, setting up an information resource/library, producing a newsletter and possibly a web site.

The next meeting of the group is on 26th May at Greenhill Primary School from 1.30pm to 2.30pm. If you are interested in joining or finding out more information please contact Louise Taylor on 274 6413.

David and Angela welcome you to the

Hamlet Café Abbeydale Industrial Hamlet

Free admissions, Large car park

All day breakfasts, lunches, snacks, cakes and pastries. Pollards coffee, wide selection of teas,

A family business for 20 years, offering home made food and an outside catering service

Open Mon - Thurs 10-3.30pm Sun 10.30-4.45pm

Tel: (0114) 2353404

Valerie of Dore Florists

Tel: 236 2168

We have been delighting customers for over 18 years with our creative floral designs


We supply fresh flowers for every occasion

Let us please someone you love

Phone or call in and browse our new interflora brochure




Interflora



becks-design
landscape consultancy

bespoke, landscape design & construction
traditional and contemporary style
for your outdoor space.

t: 01246 224653



www.becks-design.co.uk

W.O.R.K. Ltd

(Reg. Charity No 1050876)

(Worthwhile Occupational & Recreational Krafts)

Garden Centre/Craft Centre and Coffee Shop

We stock a wide range of goods for sale within our Garden Centre/Craft Shop.

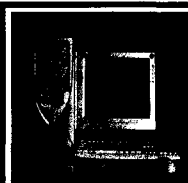
Come and browse round and see our bedding plants, shrubs, water features and garden furniture made and painted to your specification.



We also stock beautiful glassware made on the premises by our trainees, plus cards, wrapping paper, candles and many other small gift items.

**Opposite the Fire Station, Ringinglow Road,
Bents Green, Sheffield S11 7TB**

Tel: 0114 262 0094 Email: workltd@aol.com



Affordable

Computers

www.affordablecomputersuk.co.uk

Custom built PCs for home,
small business, churches, charities.

Repairs, Upgrades, Software, Training.

Contact Roland Hill

(0114) 235 1880 or 0779 213 5110

Letters continued.....

Dear Sir,

Green belt/development

I have been reading with increasing disquiet reports in both the local and national press that the green belt could be seriously under threat. Last year the Chancellor of the Exchequer (C/O/E) commissioned a report on future housing needs from Kate Barker an economist at the Bank of England. Gordon Brown announced details of The Barker Report in the last budget. I am reproducing here some of the key points as reported in The Times as virtually no-one I have spoken to about this has been aware of it :

* A total of 70,000-120,000 extra new homes should be built in England. Between 17,000 and 23,000 of these should be affordable homes.

* Extra land should be released for housing if prices rise beyond an affordability target set by regions.

* Planning systems should be speeded up with more power for planning officers and less for councillors.

* Government should set up a new investment vehicle for rented housing. Community infrastructure fund of £100 million to £200 million should help to pay for improvements to drainage. etc.

Worryingly in return for releasing more land councils would gain extra money "to improve facilities for residents in the areas where the homes are built". this money would come from a planning gain supplement levied at the time permission was approved.

I care passionately about preserving what we have here on the edge of Dore village and to this end I saw our MP Richard Allan. I have a follow up letter from him saying I am right to be concerned about the Barker Report and that he has written to the C/O/E about the implications for the Green Belt and will let me know when he has a response. Watch this space!

Additionally I have had discussions with the local Council for The Protection of Rural England. Their central office has

produced its own report arguing against the need to release Green Belt land for development and putting forward alternative proposals.

Much is happening currently on planning matters :

* The Government is putting a new Planning Bill through Parliament which is apparently having a rocky ride and is presently with the House of Lords These changes to planning law are likely to be the most drastic and damaging for 50 years.

* Sheffield Council has its review of its Unitary Development Plan (UDP) adopted in March 1998 underway. Richard Allan wrote on my behalf to the Head of Planning to ascertain the current "state of play" and what form any consultation process would take. I have received a copy of Les Sturch's detailed reply which space will not allow me to reproduce here. Suffice to say that the current UDP contains policies aimed at maintaining a strong Green Belt. I sincerely hope that the readers of Dore to Door will agree that we need to ensure that the Sheffield Development Framework that will replace the UDP reinforces these aims.

The timescale of actions is expected to be:

* June/July 2004 - New planning legislation will commence.

* End of 2004- S.C.C Development Services to report to the City Council Cabinet.

* Early 2005- Consultation with members of the public. N.B. the form and scope of the consultation will depend considerably on guidance the government has yet to issue.

In the meantime the Council has logged my comments relating to the maintaining of the green belt in the South West of the City and I have been added to their mailing list re. future Consultations. -

Sir Max Hastings the President of The Campaign To Protect Rural England recently wrote an excellent article in The Times. He says it will be the nimbys who will save our fields from the bulldozers. I sincerely hope he will be proved right not just for ourselves but for future generations.

Jean Newton

Local Health Walks

Sheffield now has 26 weekly Health Walks at 23 different locations city-wide. Three of these are in the Dore and Totley area. They are short walks of no more than an hour. They are entirely free and everyone is welcome. Our walkers cover a broad age range (40-90!) and a wide spectrum of fitness.

These differences are not a problem because health walks are specially designed to allow individual walkers to walk at their own pace. On some walks this is done by ensuring that the trained leaders who accompany the walk spread out between the front and the back of the group. At other locations we offer a short walk as well as a longer walk.

The main objective of the health walk project is to promote good health by encouraging people to take short walks on a regular basis. The social side of these walks is a big bonus and in addition to encouraging walkers to chat amongst themselves whilst walking, we like them to continue the social interaction afterwards over a cuppa.

Ecclesall Woods walks - Tuesday mornings 10.15 for 10.30 departure.

Please note that this walk leaves from The Abbeydale Industrial Hamlet and not from Abbeydale Garden Centre as originally advised. We have been using the Hamlet since the beginning of April and it has proved very popular. There are two big free car-parks, lovely clean loos, and the café offers a wide range of delicious home-baked fare!

At this location everyone walks for 50-55 minutes. The way we accommodate all levels of fitness is to ask everyone to turn back at an agreed time point wherever they are.

Totley - Wednesday Mornings 10.15 for 10.30 departure.

This walk leaves from Totley library. We meet inside the library in the children's section. Most weeks we are able to offer a short walk as well as a longer walk. Both walks last approximately 45 minutes but the short walk takes a different route and proceeds at a more leisurely pace. We return to the adult section of the library after the walk for refreshments. There is a nominal charge.

Dore - Friday 2nd July 10.15 for 10.30 departure

This special health walk for Dore Village Walking Week will leave from the Old School beside the green. Refreshments will be provided afterwards.

Volunteers play an essential part of the health walk project. If you might be interested in becoming a volunteer walk leader we would love to hear from you. Please contact Sue Lee initially. Sue is the health walk co-ordinator for south-west Sheffield and can be contacted on 0114 2839195. She will be happy to explain what's involved and to provide additional information.

ELR AUCTIONS
Established 1840

Antique & Fine Art Auctioneers & Valuers

Thinking of selling Antiques?

Quarterly Antique & Fine art Specialist Sales
and Fortnightly Antique & Collectables Sales
Our National and International Customer Base
are always seeking to purchase

Antique furniture, Porcelain, Paintings, Silver
and Jewellery, Sporting Memorabilia, Coins,
Medals and Postcards, Clocks etc.

Complete Estate Clearance or Individual Items Sale Or Initial Advice and Pre-Sale Home Visit by a Qualified Valuer

The Sheffield Salesroom, The Nichols Building, Shalesmoor, Sheffield, S3 8UJ

Telephone 0114 281 6161 www.elrauctions.com



Do you require a Valuation?

Professional Valuation Service
for

- Insurance
- Probate
- Insurance Claims
- Family Division
- Inheritance Tax

Contact us for a confidential Home visit
by a Qualified Valuer

First Steps ★★★★★★ Nursery School ★★★★★★

Dore Old School, Savage Lane, Dore S17 3GW

Registered provider of nursery education for 3 and 4 year-olds
Links with schools in both the maintained and private sectors
Transition arrangements with Dore Infant School
Excellent OFSTED report

"There is an **excellent range of resources** to support all areas of learning..."

"...the staff are able to motivate the children to achieve **high standards in their learning**, particularly in language and literacy and mathematics."

"The staff are very sensitive to individual children's needs and the **high staffing level** enables them to spend time working with each child at a level appropriate to their needs."

"There are clear policies to identify and assess children with special educational needs and the staff offer **excellent support** to these children."

"...**excellent opportunities** to explore sound and music, participate in imaginative play and experience a variety of media and techniques for drawing, painting, collage work and model making."

"**Excellent experiences** are included to encourage the children to use their senses and feelings to respond to a range of stimuli."

"...**a stimulating learning environment**..."

(from OFSTED inspection report, December 1999)

MONDAY TO FRIDAY 8.30am TO 4.30pm

NEW FACILITIES AND SERVICES FOR PARENTS FROM SEPTEMBER 2000

For more information and to arrange a visit please telephone
0114 235 3801

DORE BUILDING MAINTENANCE LIMITED



Property Maintenance Specialists

Complete and Efficient Building Maintenance & Repair Work

ROOFING - JOINERY - PLASTERING
NO VAT

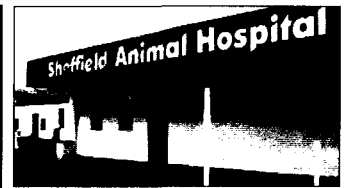
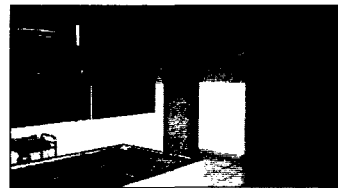
135 Neill Road, Sheffield S11 1QJ
Telephone: 0114 236 5355 Fax: 0114 235 6088
Mobile: 07973 517756

'Putting Your Pet First'



SHEFFIELD ANIMAL HOSPITAL

offers the Highest Standards
of Veterinary Care



- ▶ Free Parking for 35 Cars
- ▶ Complicated Case Management
- ▶ Hospital Standard Care
- ▶ Treatments for Exotic Pets
- ▶ 24-hour Nursing Service
- ▶ No Task Too Small
- ▶ Pet Micro-Chipping Service
- ▶ Stress-Free Waiting Areas
- ▶ Call For a Consultation

Sheffield Animal Hospital,
77 Baslow Road,
Totley,
Sheffield.

Tel: 0114 2365 999.

Also in Eckington & Bolsover



12 Rosamond Place
Bradway, S17 4LX

Tel: 0114 2351900

Mobile: 07831 634197

www.ATaElectrical.co.uk

Established 1984

Your local Electrical & Alarm specialist
Fully qualified for all installation &
Maintenance work - friendly too!

- New installations & rewiring
- Internal & external light & power
- Garden lights, power & water features
- Burglar alarms installed and maintained to BS4737

For free quotations and advice call Tim Allsop

Bayleaf Gardencare

Complete Landscape Design and Construction

... from a problem border to a total
transformation of your garden ...

Full range of maintenance services including regular mowing

John Dawson BSc. 74 Meadowhead Sheffield S8 7UE

Telephone: 0114 274 0149 Mobile: 07774 467697



SERVICES LTD.

AERIALS & SATELLITES

- ❖ All Areas Covered
- ❖ Fast - Efficient - Professional
- ❖ Channel 5 - Upgrades - Repairs
- ❖ Multi point - Sky Relocation
- ❖ Meter Alignment - Tuning Service

NO CALL OUT CHARGE • NOT VAT REGISTERED

OFFICE & EVES. 8am - 10pm 0114 2585 181

Immediate attention : Mobile 07930 411337

621 Chesterfield Road, Sheffield S8 0RX

Continued from page 1

doing that today, can you?" chuckles Chris.

He has fond memories of Dore village when he was a lad himself. He describes the old fish and chip shop which was a wooden hut situated just before the Corner Shop cottage on what is now part of the garage forecourt. "You could get thrupenny fish, (three old pennies), and a penn'orth of chips, and it was absolutely gorgeous"! Opposite the Hare and Hounds stood a row of cottages and at the end was Marshall's shop run by Fred Marshall and his wife Sarah. "They used to sell hams and bacons and pork pies – out of this world"! In order to extend their trade, Mrs Marshall had a wooden hut erected in front of the high wall bordering Bottomley's Plantation (about where E.L.R. now stands). "On a Friday and Saturday night, she used to sell hot pies and peas and gravy, I can taste 'em now ... beautiful!" Chris salivates.

Like all the children of the village Chris attended Dore School between the ages of five and fourteen. His teachers were Miss Dobbs, who walked every day all the way from Dronfield, Miss Hodgkins, who came along Old Hay from Totley and the "lovely" Miss Reynolds who travelled by train from Chesterfield. "She had to walk right up from Dore Station, up Dore Road, and we used to look for her, standing in the playground, when she was a bit late, hoping she was coming, because we knew that if she didn't come Mr. Speight would take us and we hated that". Mr. Speight was the headmaster and Chris admits to having had "one or two strokes o' the cane from him". Strict though he was, the boys were encouraged by the headmaster to develop practical skills such as gardening on the school allotments which were situated off High Street beyond the Methodist Church "back of old Mester Roebuck's".

Friendship was the most important thing at school along with the pleasure of playing football and cricket together. Chris remembers Philip Swift, Tommy Taylor, Alec Thorpe, Billy Thorpe, John Caisley, Walter Colley and lots of lads. "We all



Dore Football Team in the 1950s. Back Row L to R: B Biggin (Secretary); J Kemp; R Wragg; F Cartwright; D Walch; P Firth; G Stacey; C Fearnough (Trainer) Front Row: F Rowe; G Thorpe; Bradshaw; J Swift; S Eggo.

happily used to play football, up in the old cricket field on Townhead Road, because in those days there was no telly". They also played Hide and Seek games around the village and in the many farmers' fields. As teenagers they enjoyed "scrumpling" in the best orchards such as those at Broadthorpe, Church Lane and Denniff's at Dore Hall Farm and ... of course, chasing girls!

Chris' passion for football remained with him for many years both as a player and a coach. "Before the war, there was a marvellous football team in Dore. They won the Amateur League Cup. Then after the war, we had a great team, in the fifties, won all competitions. I used to go all over with Dore F.C. right from being a little boy up to when it stopped in the early 1960's" he sighs wistfully.

However, like thousands of young men of his generation Chris had to leave his close-knit community and the village where he was born to do his bit for King and country. He recalls, "I was called up in 1941 and went to HMS Glendower in North Wales to do my training. After a few months there,

we got drafted down to Liverpool to do a gunnery course, and then, I joined a ship and went abroad". He served five years in the Royal Navy as a gunner, mainly in the Mediterranean and, as he modestly admits "saw a fair bit of action".

Safely back home after the war, Chris met Margaret. They married in Dore Church in 1947 and had their reception in the Methodist Hall. Friends and family had pooled their ration coupons to buy the ingredients for a two-tier wedding cake, beautifully made by Bessie Colley's Aunt Dora. Chris found a job with Mester Hepworth who had a comb-making workshop behind the Methodist Church and then at Joseph Rogers in Pond Street before starting his own knife-making business in St. John's Street, Sheffield. Finally, in 1956 he became Steward of Dore Club where he remained for forty-four years, building up the "gentlemen only" membership and serving "the best beer in Sheffield".

When asked how the village has changed from the time of his childhood Chris replies "In Dore then, you knew everyone and gradually a lot of strangers arrived. It's been built up, houses gone up galore. I mean, imagine...there was no Heather Lea, no Kerwin; all that was fields; down Bushey Wood and all over the place, open land, open fields. Limpits Farm was just at the bottom of Causeway Head Road, where Green's shop is now. The wall came right close to the road and at the side was the drive to the farm. I can remember cattle being in there...all things like that" Chris smiles and adds "I sometimes say...it's not Dore any more, only by name. And as for the traffic... You never saw a car at one time; it used to be horse and carts, cows walking up the road. But," he concludes "I've always loved Dore and it's still a great place to live".

It certainly is and we hope that there will be branches of the Fearnough family resident in the village for many more generations to come.

*Maureen Cope
Dore Oral History Group*

CLEANING MASTER

Flood Control Services



Insurance Company Approved

Direct billing to your insurance company

Complete restoration flood and fire service

Cleaning, deodorising and drying out facilities

Security vetted for sensitive environments

Don't panic we can help

Carpets / Rugs and upholstery cleaning
Sheffield's only Proclean member – Fully insured – Rapid Drying

Call 0114 262 1345 Mob 07970 037335
8 Furniss Avenue, Dore, Sheffield S17 3QL





Dore Football Committee. Back Row, L to R: H Warnes; K Mosley; C Dean; C Powell. Front: J Priest; Mr Wood (Chairman) B Biggin (Sec) - Dinner at the Devonshire Arms.

Tree Safety Work

The tree safety survey of Ecclesall Woods, covering the whole site, is now complete. The aim was to identify all trees along boundaries, access points, public footpaths and bridleways and other recognised routes that require safety related work to ensure the safety of visitors, etc.

For your information, the trees requiring work were identified in the following way -

Silver paint numbers and dots - removal of deadwood and dangerous branches.

Blue paint numbers - reduction of crown or reduce to standing deadwood/5-8m high stumps.

Red paint numbers - trees to be felled to ground level.

It is planned to begin work on the removal of deadwood/dangerous branches (tree marked with grey paint numbers) from June 2004, although any tree-felling or tree reduction will take place only after the bird breeding season ends, from August 2004. If you require any further information, please contact Nick Sellwood (Woodlands Manager) on 0114 273 6387.

75th Anniversary

The Dore Mercia Townswomens Guild is holding a concert to celebrate their 75th anniversary on Tuesday 21st September at 8pm. Tickets £5 inc a glass of wine. Proceeds will go to St Luke's Hospice. Details from 236 5043.

It was good to see Councillor Sylvia Dunckley at our AGM on 29th March. She is on the South Yorkshire Passenger Transport Authority Committee. We get funding from them. Together, her and our Treasurer, John Savournin, have been putting our case and things are looking good. Many thanks to them both.

Alan and Barry are back and we have another driver due to join us. This is just as well, because holidays, Grandparent duties, etc., are coming up as well as clubs wanting to go out and about. We need drivers and escorts even more.

By the way, I must emphasise that we don't just cover the S 17 area. We go to many other parts of Sheffield and I am sure that many of you will have seen us around.

The outing to Bridlington is on Monday 12th July. Anyone is welcome to come. The price is £8 each (Monday Club members - this doesn't apply to you!). The Gordon's coach can take wheelchairs and has a lift. We will leave Totley at 9.30am. Please ring Irene Wells on 236 0602 to book and pay.

Margaret Barlow

PS. Congratulations to our eldest passenger, Edith Dyson, who was 102 in March. What a lovely lady she is.

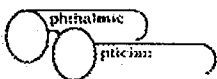
John Wade Singers

Following our recent successful concert held at All Saints Church Totley, we would like to invite additional members to join our very friendly choir. We meet at the church hall, All Saints, Totley on Friday evenings from 7.30 - 9.30(ish). Don't be shy. Just come along. You will be made most welcome!

If you would like more information, please ring:- Jenny Parker. 236 0798

DORE OPTICIANS

PETER BLAND
BSc (Hons) MCOptom



FULL SIGHT TESTS/EYE EXAMINATIONS, NHS OR PRIVATE FREE GLASSES FOR CHILDREN AND NHS BENEFICIARIES. ALL TYPES OF CONTACT LENSES AND SOLUTIONS. CHILDREN AND FAMILIES ARE WELCOME FRIENDLY, HELPFUL SERVICE FREE CONTACT LENS TRIAL GLASSES REPAIRED SPORT GLASSES OPEN 6 DAYS.

A Personal Service on your doorstep

Telephone: 236 3200

25 Townhead Road, Sheffield S 17 3GD

PARK VETERINARY HOSPITAL

A member of
The BRITISH VETERINARY HOSPITALS
ASSOCIATION

- OPEN 8.00AM-7.00PM MON-FRI, 8.00AM-4.00PM SAT
- APPOINTMENT SYSTEM
- 24 HOUR EMERGENCY SERVICE AND PATIENT CARE
- EXTENSIVE SURGICAL, MEDICAL, CARDIOLOGY AND DIAGNOSTIC IMAGING FACILITIES
- THREE SEPARATE WARD SYSTEMS WITH INTENSIVE CARE AND ISOLATION FACILITIES
- IN-HOUSE LABORATORY
- EASY PARKING
- HOME VISITS
- FRIENDLY ADVICE ALWAYS AVAILABLE
- HOMEOPATHY AND ACUPUNCTURE THERAPY AVAILABLE BY ARRANGEMENT
- FACILITIES FOR THE DIAGNOSIS AND TREATMENT OF EQUINES AT THE PREMISES OR BY ATTENDANCE AT STABLE OR YARD

FOR APPOINTMENTS OR EMERGENCIES

PLEASE RING 0114 236 3391

24 ABBEYDALE ROAD SOUTH, SHEFFIELD S7 2QN
(OPPOSITE MAIN CAR PARK ENTRANCE MILLHOUSES PARK)

Whirlow Hall Farm Trust

Bring the family to Whirlow's Barn Dance!

Two nights by popular demand.

Pea and Pie supper Friday, 18th June 2004

Hog Roast Saturday, 19th June 2004

FREE PARKING! LICENSED BAR!

7.30PM - Midnight

'Drop of a Hat' Cielidh Band

Tickets £10 Adults /

£6 Children (under 14)

Includes supper and raffle ticket.

To book tickets please contact Jayne Brooke at Whirlow Hall Farm Trust, Whirlow Lane, Sheffield, S11 9QF

Tel: 0114 235 2678

Fax: 0114 262 1015

email: admin@whirlowfarm.freeserve.co.uk

Book Reviews

A new 36 page pocket book, written by well known local author Julie Bunting, follows the course of the river Derwent from its source on the Upper Derwent moorlands at Ladybower to its confluence with the River Trent at Wilne. In its eight chapters the book explores towns, villages, places of interest and some lesser known local tales along the Derwent Valley. Illustrated in colour, this will be of interest as much for Derbyshire people as for visitors. Published by Northend, *Following the Derwent* is available in local outlets price £3.99. ISBN 0-901100-48-X.

The attractions of the Derwent Valley and the granting of World Heritage status to the lower valley mills, prompted the development of a 55 mile walk along the valley, which opened in 2003. Jarrold publishing have now produced *The Derwent Valley Heritage Way* a handy sized 96 page guide to the route. The route is broken down into 10 sections of 4.6 to 6.8 miles. Each section is clearly described, with snippets of interest, colour photographs and invaluable OS Map extracts. Details on the availability of public transport and facilities en route are included along with places to explore. ISBN 0-7117-2958-1.

Walking is proving to be an increasingly popular hobby, leading to the creation of many long distance linear walks. The Midshires Way, running from Princes Risborough to Stockport, is one such 360km challenge! Ron Haydock and Bill Allen have now written a new book covering the walk in 17 sections of 6 to 16 miles.

BAKEWELL GOLF CLUB

Play Golf on a beautiful course where there is no need to book tee times in advance.

Bakewell Golf Club is offering the residents of this area the opportunity to join one of the most attractive golf clubs around.

Bakewell Golf Club is only a short drive through some of Derbyshire's finest countryside, as many of our members from this area will testify.

Anyone who is interested, whether they are beginners wishing to take up the game, or golfers who are looking to join a private club where competitive and social golf is available, will be offered an opportunity to look around the course and meet some of the members in our friendly clubhouse.

Membership is available at a reasonable cost and, for a limited period, new members will receive a discount on their subscriptions.

Enquiries to:

Tony Stevens on (01629)640560,
Peter Garret on (0114) 2352850, or
Pam Moody on (0114) 236 7604

The book is illustrated with black and white sketches of places and items of interest along the way plus simple maps. Helpfully the route is described from both directions and there is a list of Hotels and Inns at the back, although without telephone numbers!

Walking the Midshires Way is published by Sigma Leisure price £7.95 ISBN 1-85058-778-7.

Dramatic representations in the form of plays are established as part of our culture, but it is surprising to learn that there is no evidence of theatrical activity in Sheffield before the beginning of the 18th century. Subsequently the growth of theatre and the choice of performances tells us much about the changing fashions and politics of the time and provides a rich vein of information on Sheffield development. The Sheffield Theatre History Research Group has delved into the period up to the mid 19th century to produce *Georgian Theatre in Sheffield* a fascinating insight of one aspect of Sheffield's history. Published in 140 pages by Pickard Communication price £9.99 ISBN 09544045-7-2

There is undoubtedly a real interest in published collections of old photographs of Sheffield, as reflected in earlier review. The latest book, *A Walkley Camera* is the fourth by J R Wrigley to be published by Pickard Communication. It contains 80 pages of mainly old black and white photographs concentrating on the areas that have changed most, and all excellently reproduced. Some of the earliest date from 1900, all capture some of the atmosphere of their times, but often the streets are strangely deserted. Price £7.99 ISBN 0-9544045-9-9.

Taking short city breaks within the UK or the near continent is becoming increasingly popular, but researching where to go and what to do can take more time than the break itself. Jarrold Publishing have now launched a new series of *City-Break Guides* to solve the problem. Each 100 page handy pocket size guide contains everything you need to know generously illustrated with colour photographs and street maps. There are sections on: highlights of the city; walks; sightseeing; shopping; eating & drinking; suggestions for evenings out; what to do with the kids; and where to stay. You certainly won't miss much, but then there is probably enough to ensure you want to go back again. The first guides in the series cover, Bath, Cambridge, Chester, Oxford, Stratford-Upon-Avon, and York. Price £5.99 from all good bookshops.

Open mornings. The Dore Village Society room at the Old School is open to visitors on the first Saturday of each month from 10am to 12noon. Please come along to see the facilities or talk to members of the committee about local issues and the history of the village.

Ecclesall Woods

A variety of improvements are being undertaken across Ecclesall Woods with the aim of making the woodland more welcoming to visitors, and more straightforward to explore.

Public rights of way signage is to be replaced with updated signs that will provide directional details and existing information boards are to be renewed and five new ones installed. A number of permanent wooden notice boards are also to be installed at several of the main entrances. These will be used to display information on events, management activities, etc. All these improvements will help visitors, especially those who only know the woodland a little, to find there way around, and enjoy the woodland more.

Other work being undertaken includes replacing and repairing several areas of boundary fencing adjoining Abbeydale Road South (opposite Millhouses Park), repairing/replacing rotten posts around the bird sanctuary, repairs and improvements to all the sleeper bridges in the woodland, and extending the educational programme with local schools, particularly over the summer months.

For more information, please contact Nick Sellwood (Woodlands Manager) on 0114 273 6387.

What's in a name?

Every road name tells a story, and in a village like Dore these can give a fascinating insight to our history.

The A to W of DORE describes the background to the naming of every road and street in Dore, and records the history of many of the roads' historic features and buildings. Whilst not intended as a history of the village, it contains much information that has not been widely published before and should therefore appeal to new and old residents alike.

The book has been written by John Dunstan and Roger Millican with illustrations by David Heslop. Many of the illustrations show some new angles on well-known features in the village – some of which, through familiarity, we tend to ignore. Four maps detail the roads today or provide historic snapshots.

Published by the Dore Village Society, the A to W of DORE is a bargain at just £4.95, and available from Green's shop on Causeway Head Road, and the Society stand at Dore Gala

Totley Library

Current hours of opening are:
Monday: 10am-12.30 & 1.30 -7pm
Tuesday, Wednesday & Friday:
9.30am-12.30 & 1.30 - 5.30pm
Saturday: 9.30am - 12.30pm
Closed all day Thursday
New telephone number 0114 293 0406



FIREPLACES, GAS AND SOLID FUEL SHOWROOMS

Over 30 stoves on display

BRAMDALE HOUSE LIMITED

630-642 Chesterfield Road,
Woodseats, Sheffield S8 0AS
Telephone (0114) 258 8818

TRISTAN SWAIN

Landscaping & Maintenance
Established 20 years
Fully insured

GARDEN RESTORATION & MAINTENANCE
Free plant food for all your garden with all new
Garden maintenance contracts

Unit C4
Sheaf Bank Business Park
Prospect Road
Heeley
Sheffield S2 3EN

Tel/Fax: 0114 255 4689
Mobile: 07831 802539



Brian Hill & Son

Builders, Joiners, Decorators

Established 1970

Replacement Doors and Windows

uPVC and Wood

Single and Double Glazing

Roofing and Pointing

Furniture Repairs

47 Rushley Drive, Dore, Sheffield S17 3EL
(0114) 236 7384 & 230 7798
Mobile 07860 210156



Bill Allen - ELECTRICIAN

J.I.B. Approved

House rewiring specialist

Free safety check and quotation

Extra plugs - Lights - Repairs

Automatic outside lights

for FREE and friendly advice ring

Totley 262 0455

or 07836 642822 (mobile)

THE IRON WORKS

SHEFFIELD



WROUGHT IRON SPECIALISTS

We Manufacture:

**Gates
Fences
Window Grilles**

Create your own perfect feature
or you can choose from our many designs.

For a free quote, no obligation or advice.

See your ideas put to life

Please telephone -

Office: 0114 281 0880

Mobile: 07949 393301



E. & L. Wilson

Builders and Plumbers

Central Heating,

Domestic Plumbing

Glazing, Double Glazing and Glass

Home Maintenance

uPVC and Wood Windows

Please Ring on 236 8343

Inheritance tax planning

Perhaps the best advice is to spend your money before you go. But that may not always be possible, especially when large amounts of ones worth are tied up in a property, or then perhaps you wish to leave a significant inheritance to children or grandchildren.

According to money guardian, people in Britain waste over £1 billion each year through neglecting their inheritance tax planning. Yet inheritance tax is simple to plan for if you take the time to do so.

Inheritance tax of 40% may be payable on any part of your estate worth over £263,000. (This allowance can increase every year with the April Budget). If your estate is worth less than this amount, there will be no inheritance tax to pay.

When assessing the total value of your estate you have to take into account:

* Everything you own, or the share of everything you own jointly, for example:

- the value of your house - your car
- your bank or building society account
- value of life assurance policies (unless written in trust)

- property and other assets held overseas

* Gifts from which you keep back some benefit, for example a house you still live in and maintain, although given to someone else.

* Assets held in trust from which you get some personal benefit, e.g. income.

With house prices having risen substantially over the past five years, there's a good chance that your family could become liable for inheritance tax, particularly if you leave a substantial amount of your possessions to anyone other than your spouse. Anything that you give during your lifetime or leave on your death to your spouse is completely free of inheritance tax, but both of you must be

domiciled in the UK.

It's easy to avoid or reduce the tax bill faced by your children or beneficiaries - it just takes time and careful planning - yet only three out of ten bother to make the effort.

How to reduce your tax liability

Some gifts are always free of tax:

- You are allowed to make tax-free gifts to whomever you want for as much as you want, provided it is an outright gift from which you receive no benefit. If you live for over seven years after you make the gift, there will be no tax to pay on it by the estate.

- You can make wedding gifts up to £5,000 for each of your children, £2,500 for each grandchild and £1,000 each to anyone else.

- Other gifts up to a total value of £3,000 a year, plus any unused part of the previous tax year's £3,000 exemption.

Another way of avoiding unnecessary tax is to write any life assurance policies, where you pay regular premiums, in trust. This could be for the benefit of a child, which means when you die there will be no inheritance tax to pay on this part of your estate, as the proceeds of the policy will belong to the child.

A trust is a separate legal entity which is set up on behalf of a named beneficiary - usually by a parent on behalf of their child. The assets are protected and managed by the trustees on behalf of the child until they are 18. Trusts can be cheap and simple to set up, which is why it can be a good idea to consider putting some of your assets, including your life assurance, into trust.

It's certainly worthwhile planning ahead when it comes to inheritance tax, particularly considering house price rises and the fact that an increasing number of people now also own property overseas.

This article is based on our understanding of current taxation, legislation and Inland Revenue practice, all of which are liable to change. It is a good idea to seek advice from a qualified accountant.

Stop those calls!

Are you bothered by unsolicited sales and marketing calls? The 'Telephone Preference Service' (TPS) helps you to make sure your telephone number is no longer available to organisations who may telephone you with offers and information you do not wish to receive.

Under Government legislation it is unlawful to make unsolicited direct marketing calls to individuals who have indicated that they do not want to receive such calls. You can either do this by contacting companies directly and asking them not to phone you or you can register with the central service 'Telephone Preference Service' to stop all such calls.

It is now a legal obligation for anyone making direct marketing calls to ensure they do not call individuals who have registered their wish not to be called!

You can register with TPS by phone on 0800 398 893 or online at: TPSonline.org.uk

Councillor surgeries

Local councillors are available for consultation in the Dore Village Society room on a regular basis. Forthcoming scheduled dates are: **Saturday 12th June**, 10.30 to 12 noon - Liberal Democrats and **Monday 28th June**, 6pm to 7pm - Conservatives. [Both subject to change depending on the June 10th election!]

Whinfell Quarry Gardens

The Friends of Whinfell Quarry Gardens are always looking for new supporters and can be reached on 236 1113.

They have arranged a number of working days this year to clear paths, undertake fencing work or general tidying.

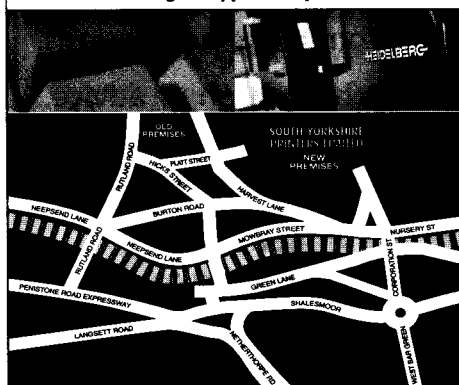
The next date is Saturday July 24th from 11am to 3pm.

SOUTH YORKSHIRE PRINTERS LTD

HAVE MOVED TO
DIGITAL WORKS
HARVEST LANE
SHEFFIELD S3 8EG

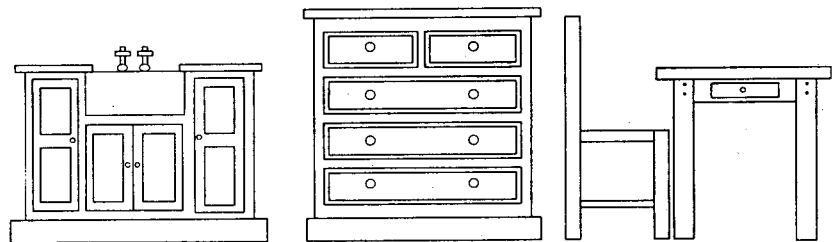
Tel: 0114 272 1105 . Fax 0114 276 0633

Email: design@sypcolourprint.co.uk



Beech House

Reclaimed Pine Furniture: Contemporary Art & Ceramics



Made - to - Measure furniture : Kitchens : Design & Build : Display units

361 Abbeydale Road, Sheffield, S7 1FS

Tel/Fax: 0114-2501004

Beech.house@lineone.net

www.Beechhousefurniture.co.uk

with Love & Best wishes XXX

Cards & gifts for all occasions

We have expanded into larger premises offering an extended range of

Seasonal & collectable items including:

Barton Creek Bears, Jellycat, Gund Traditional & handmade cards, Childrens fancy dress, silver & titanium jewellery

Telephone: 0114 235 1411
304 Twentywell Lane, S17 4QR

Physiotherapy

Friendly well established practice, run by State Registered Physiotherapist specialising in the latest holistic treatment methods for

- neck, back and shoulder pain
- sciatica, tennis elbow, knee pain
- chronic, longterm musculoskeletal pains which are not responding to conventional treatment
- gentle treatment techniques for arthritis, especially suitable for older people
- sports injuries
- home visits on request

Dore Physiotherapy Practice

www.dorephysiotherapypractice.co.uk

Mrs Esther Hague BSc (Hons) Physiotherapy
 56A Dore Road, Sheffield S17 3NB Tel:(0114)262 1255

LTP Property Services

Domestic, Commercial, Industrial

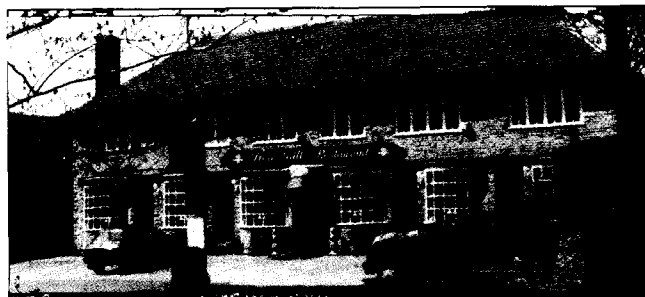
Last year, over 120,000 fires were caused by electrical faults. We are fully qualified to certify installations to BS7671, so for buying, selling or peace of mind, have your installation tested. These tests also cover the statutory HSE regulations for all employers.

We also offer *PAT testing, all electrical work, plumbing, property maintenance and alterations, roofs and gutters.*

To book a no-obligation appointment, phone:
0114 2368943 Peter Knight: 07773091260
Tom Knight: 07800889662

Joe and Delores and their daughter Elizabeth welcome you to the...

DORE GRILL Restaurant



Our new conservatory is open for you to enjoy coffee & home made scones each weekday 9am - noon
36 Church Lane, Dore, Sheffield
telephone 0114 262 0035

Opening times

Lunches served Mon - Fri, noon-3pm - Dinner served Mon-Sat 6-10.30pm
 Sunday lunch noon - 3pm

Every Saturday

Dinner dance and 4 course meal
 £21.50
 or choose from a la carte menu

Blackboard Fish Specials

Every day - Lobster Thermidor
 Whole Dover Sole, Lemon Sole

this is all you pay for a superb silver-service lunch or dinner at the DORE GRILL Monday to Friday (a la carte menu also available)

3 Course Lunch £9.50

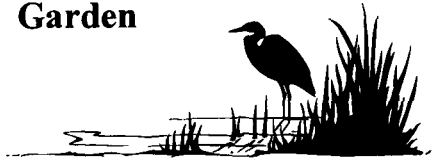
Soup
 Chef's homemade soup of the day
Garlic Bread
 French stick garlic bread topped with melted cheese
Salmon
 Poached salmon covered in mayonnaise garnished with salad
Melon
 Melon fan with fresh fruit
Egg
 Egg mayonnaise garnished with salad
 * * * *
Steak
 6 oz fillet steak served with tomatoes and mushrooms
Fish
 Chef's fresh fish of the day
Chicken Cacciatore
 Chicken cooked in red wine, mushrooms and garlic
Pie
 Chef's homemade pie of the day
Roast
 Chef's roast of the day
Liver
 Pan fried Liver served with saute Onions
Vegetarian
 Chef's vegetarian dish of the day
 * * * *
Vegetables
 Chef's choice of vegetables and potatoes of the day
 * * * *
Sweets
 Choice of sweets
 * * * *
Coffee
 Fresh filter coffee and mints (£1.50 extra)

4 Course Dinner £14.50

Soup
 Chef's homemade soup of the day
Pate
 Chicken liver pate served with finger toast
Melon
 Honeydew melon fan served with orange segments
Pancake
 Chicken and herb mushroom pancake glazed with cheese
Salmon
 Salmon and Prawns served with Marie Rose sauce
Brie
 Deep fried Brie served with Fruit Coulis
Lamb
 Shank of lamb served with redcurrant sauce
Steak
 6 oz fillet steak served with Red wine and Mushroom sauce
Roast
 Chef's Roast of the day
Pie
 Chef's homemade Pie of the day
Chicken Cacciatore
 in Red wine, Mushrooms and Garlic
Salmon
 Poached Salmon Fillet served with White wine & Parsley sauce
Liver
 Pan fried Liver served with Saute Onions
Vegetarian
 Chef's vegetarian dish of the day
Vegetables
 Chef's choice of vegetables and potatoes of the day
Sweets
 Choice of sweets from the trolley
Coffee
 Fresh filter coffee and Mints

£15.00 These are sample items
4 Course Sunday Lunch

The Wildlife Garden



Few garden birds die of old age. If they don't succumb to disease or get eaten by next door's cat there is, at least according to some people, that ultimate threat - the sparrowhawk. For many of us who regularly feed birds, a sparrowhawk is about as welcome in our gardens as Japanese knotweed, but for some bird-watchers, to see one swooping down on an unsuspecting sparrow is a great thrill and privilege; simply a top predator doing what it does supremely well.

So are sparrowhawks really such a threat to the survival of our garden birds?

It is easy to find statistics for these predators: there are around 68,000 in Britain and each breeding pair will lay a clutch of between four and six eggs, but around two thirds of the fledglings will not survive their first winter. Young sparrowhawks need to eat two or three small birds a day and in one study '921 carcasses were found at one nest; and this represented about 80% of the sparrows dying in that month in the study area.'

Despite their name, sparrowhawks don't just live off sparrows: they are known to feed on over 120 species of birds, although generally they take the more common ones; those which perch in open positions (scientists call this high 'relative vulnerability') and any that are old, sick or injured, though around 40% of their diet in summer is fledglings. In a dive they can reach over 25mph, but usually only one in ten attacks is successful.

Unlike many birds of prey, sparrowhawks do not live long, usually less than seven years and at least a third of the adults die each year. The main reason for this is not due to them flying into windows when they are single-mindedly pursuing their prey, but starvation: the number of sparrowhawks in an area is closely linked to that of their prey. This means that if the song birds are thriving, all things being equal, so will the

sparrowhawk population and if the numbers of their prey population declines, so will that of the sparrowhawks. One consequence of this has been, with the falling numbers of songbirds in the countryside over recent years, sparrowhawks have now become much more urbanised and taken to hunting in gardens.

However, statistics can't tell the whole story. Whilst scientists need to be dispassionate about their work and write of 'prey', 'number of carcasses' and 'relative vulnerability' of song birds, for a wildlife gardener the reason we encourage birds is not for scientific research, but because many of us want to be connected with nature. Wildlife gardening is all about emotion: the joy of having a robin so tame it will take mealworms from your hand; laughing at the cacophony of young starlings squabbling when their parents leave them all day beside your suet feeder and the sadness when a blackbird you have known since it was a fledgling comes back to die in your garden - the only place it feels safe - suffering horrendous injuries from being mauled by a cat.

Sparrowhawks may well only feed on the 'relatively vulnerable', but when you see it actually happen, it is not pleasant: it was a warm day in September and I was suddenly aware all the garden birds had gone silent, that is apart from one old starling screaming in pain as a sparrowhawk held the bird firmly beneath one of its clawed feet. The starling thrashed around like a fish on dry land, but the big bird held on, keeping its balance by spreading out its wings so far that they touched the soil, rather like a feathered umbrella. I didn't chase the sparrowhawk off as by then I thought the starling was doomed, no doubt suffering from shock and injuries inflicted by the predator's claws. But to my dismay, the old bird took an awful long time to die and its wailing filled the garden for nearly an hour. Eventually it went quiet and two hours later, I noticed the sparrowhawk standing half asleep in the grass at the back of my garden; all that remained of the starling were some feathers blowing around in the wind and a few bloody bones.

Having witnessed such a graphic example of sparrowhawk predation in my garden, I

can well believe the statement made by Dr Will Cresswell, Research Fellow at Oxford University: 'Almost all of the behaviour that you see amongst small birds in Britain is in response to the threat of predation from Sparrowhawks.' Should we perhaps be calling for some form of control of these birds - like gamekeepers and many racing pigeon enthusiasts have done? I don't think so. However distressing and locally significant sparrowhawk attacks might be, they are only the tip of the iceberg when it comes to song bird predation. Even if every sparrowhawk kills 1000 garden birds a year i.e. around 3 million throughout the country, it pales into insignificance when compared to the Mammal Society's estimate of 250 million animals - albeit mammals and amphibians as well as birds - killed each year by cats.

So what can we do as wildlife gardeners? If you find the prospect of a sparrowhawk attacking your garden birds too upsetting, you can of course always stop feeding them, but this hardly seems the course of action most of us would choose to follow. The other alternative is to make your garden birds less vulnerable to predation. Although I've been told that you can surround your feeders with canes - which are supposed to make it more difficult for the sparrowhawk to attack - or use mirrored spheres to baffle the bird, I think it is far simpler to position your feeders and bird table near to dense shrubs or thick hedges where the birds can quickly hide. Also, if you do throw out scraps of bread to put them under bushes.

But perhaps you should be pleased when a sparrowhawk regularly visits your garden for isn't this proof that when it comes to attracting birds, you've got it right?

Jack Daw

Dore Male Voice Choir

Because of the usual congestion of concerts in the Autumn and Christmas period, the Choir have decided to move the Annual Gala Concert that has usually been held in October to the Spring. In consequence there will no Autumn Concert this year.

The Choir sang for the rotary Club Charity at Dronfield Church on 7th March, a most enjoyable concert. They also held a Gala Concert for the Lord Mayor's Charities, NSPCC and Alzheimer's Society on 15 May. Held at Ecclesall Church, Tapton Band joined the choir as guests, and the Lord Mayor was in attendance.

Once again the Choir will be singing at the Dore Festival with the Dore Mercia and Totley Townswomen's Guild Choir. This is always a happy occasion, with never an empty seat in the Church Hall, and as always is on the 2nd Thursday of Festival.

The Choir went to the Mexborough and District Music Festival again in March and won a cup in the Male Voice Choir Section. It is certainly another busy year of events and festivals.

David Heslop

Professional Cleaning by
NEW PIN CLEAN LTD

Daily • Weekly • Fortnightly • Monthly

- Spring Clean • House Moves
- Full Ironing Service • One Offs
- Fully Insured • Free Quotations

Our well trained staff will clean your home thoroughly. We offer a customised service to suit your requirements

NEW! *The Iron Shop*
Why not bring your Ironing to use?
Local Collection & Delivery

0114 236 2943

49 Wollaton Road, Bradway, Sheffield S17 4LF

mature jobbing tradesman, experienced in the following and only interested in giving service and quality, not speed.

Brick Paving	Laminate Flooring
Property Repairs	Carpenter
Boundary Walls	Joinery
Alterations	Kitchen Units
Fencing	Tiler
Pointing	Patio's

For free quotes and personal service phone Howard on 235 0358 or mobile on 07939 394273

“How to be sure your garden improves....and solve problems and avoid expensive mistakes”

To good to be true?

Well no it is true, after a two year development period we have proved that using an “**Expert in Your Garden**” actually in your garden, has been of great benefit to our existing customers.

Years of knowledge

Using years of experience and knowledge our “**Expert in Your Garden**” can instantly see the problems you may have and offer simple and easy to follow solutions for you to use. Plus a follow up call from your will always be welcome so that you never feel lost.

Invaluable report

After every visit a comprehensive, invaluable report is sent to you, detailing the simple actions that we recommend to improve your

garden, solve your problems and save you money by avoiding expensive mistakes.

Plant guarantee

Our hardy garden plants all carry a one year guarantee - it's our promise of success.

Call now

Call us or call in and find out how you will benefit from a visit from the “**Expert in Your Garden**”



Dyche Lane, Coal Aston
Tel: 0114 236 9091
www.garden-glorious.co.uk

BYETHORPE FURNITURE
of
CHURCH FARM
BARLOW, DERBYSHIRE
Tel: 0114 2899111

NOW OPEN
IN THE HOPE VALLEY
AT
THE PEAK GARDEN CENTRE
BAMFORD
NEXT TO THE COFFE SHOP

- QUALITY SOLID WOOD FURNITURE
- INDIVIDUAL STYLED LAMPS CRAFTED IN WOOD
- MIRRORS
- PAINTINGS, GREETINGS CARDS AND SELECTED ACCESSORIES

OPEN WEEKENDS

Andrew Haigh Decorator

Professional interior, exterior, decorating and wallpaper hanging. Also, coving application, rag rolling, French polishing and many, many more decorating tasks undertaken.

Clean tidy and completely professional

For a free competitive quote cal now on
(0114) 272 6064 or 0797 452 9901



**Apple
Landscapes**



**All Aspects of Landscaping at an
Affordable Price**

**Patios, Turfing, Fencing,
Landscaping etc.**

Hard Landscaping Specialist

For a Free Quote and
Friendly Advice call:

Darren on 01246 237505
Mobile: 0778 2167540

Horizon Electrical

*Faults, Rewires, Sockets, Lights,
Cooker Points, Electrical Showers,
Phone Points, Security Lights*

No job too small

Fully qualified with friendly advice

**Ring Totley 236 4364 or
mobile 0776 5036849**

Well Dressing Diary 2004

Throughout the spring and summer, a succession of old Derbyshire villages put on well dressings, often associated with a week of village festivities.

These are just some of the dates. You can find out more details, or opportunities to see well dressing in progress, by ringing the Chesterfield Tourist Information Centre on 01246 345 7777/8.

May

- 20-26 Tissington
- 29-5 Monyash
- 29-5 Middleton-by-Youlgrave
- 29-6 Wirksworth

June

- 5-13 Ashford in the Water
- 13-20 Cressbrook
- 19-24 Youlgrave
- 25-2 Old Whittington (Chesterfield)
- 26-3 Rowsley
- 26-4 Tideswell
- 26-4 Litton

- 26-4 Hope
- 27-4 Bakewell

July

- 3-9 Coal Aston
- 3-10 Hathersage
- 3-11 Harthill
- 3-11 Dore
- 8-15 Pilsley Village (nr Bakewell)
- 8-18 Buxton
- 10-18 Little Longstone
- 11-18 Bamford
- 16-22 Cutthorpe
- 16-23 Dronfield Woodhouse
- 16-25 Millthorpe
- 17-24 Heath (nr Chesterfield)
- 17-25 Holmesfield Children's Well
- 24-2 Stoney Middleton
- 31-8 Bradwell

August

- 11-19 Barlow
- 12-15 Great Hucklow
- 21-28 Taddington
- 26-3 Holymoorside
- 28-2 Foolow
- 28-4 Eyam

Forthcoming anniversary

This year sees the Dore Village Society celebrates the 40th anniversary of its formation. There will be a number of events and initiatives to mark the occasion.

The Society would therefore like to hear from any residents who have an idea, or community project, that they would like to pursue, but need practical or financial support to do so.

Just call any member of our committee with details of your idea and we will give every help we can.

New Post Box

A new post box has appeared recently on the corner of Brickhouse Lane/Cross Lane. It is of the small rectangular "rural" variety set, not in a brick pillar but on a short tubular metal pedestal with a neat bit of asphalt around its base.

Sadly this is a rather undistinguished replacement for the earlier box which was recently blown up by a large firework.

Plague village tour

New self-guiding audio tours of Eyam are now available for hire from Eyam Hall and the Church Street Stores in the village. Lasting two hours, and using the latest digital technology, the tours visit Eym's most important historic sites as well as four locations outside the village.

The initiative is part of a £138,000 project to interpret the history of the village including panels, leaflets, sculpture, footpath improvements, signposts and plaques.

Reducing car crime

A scheme to help protect cars from young car thieves has been launched across South Yorkshire. The Vehicle Watch 25+ scheme operates by using window stickers in members' cars.

If the vehicle is driven by someone who appears under 25, police will stop it to check whether it has been stolen.

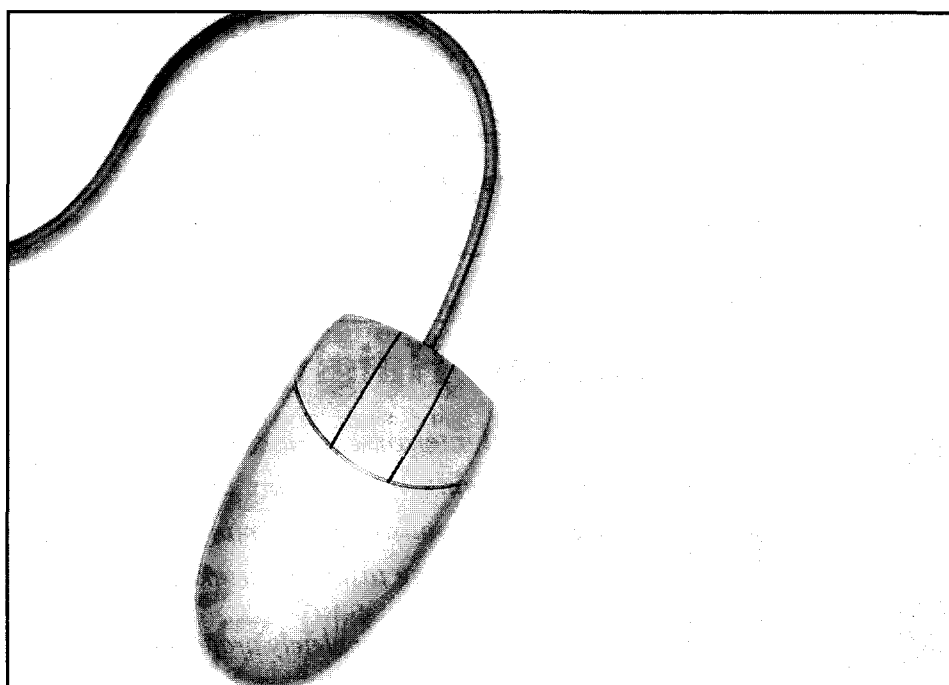
Statistics show three-quarters of vehicle crimes are committed by under 21s.

Animal magic

If you love nature and are online, visit www.natureonthemap.org.uk This new site, by English Nature, the Government's natural history advisor, maps all the important nature locations in England.

Just tap in your postcode and the site will reveal Sites of Special Scientific Interest and nature reserves within a 10km or 50km radius of your home.

Maps display at scales from 100km right down to 100m, with paths visible.



www.elr.co.uk

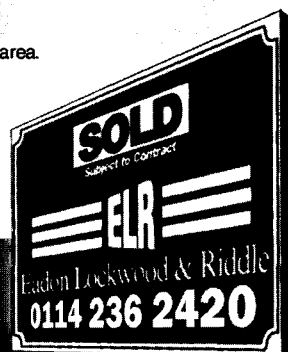
handling around 900+ property searches daily

- 58% of today's home movers use the internet to find a property*
- People tell us ours is the best estate agent website in the area.
- You might like to bear that in mind when you're considering selling.

FREE VALUATIONS

33 Townhead Road, Dore,
Sheffield S17 3GD 0114 236 2420
Email: dore@elr.co.uk

*Source: rightmove.co.uk **2003 Figure



Take care of those teeth

We all learn as children the importance of looking after our teeth, but what about our pets? The good news is that our pets are usually born with healthy mouths - with bright white teeth and firm pink (or pigmented) gums. However, from a very early age, food material, bacteria and saliva are deposited naturally and continuously on the surface of the teeth and gums forming plaque.

As plaque accumulates, toxins produced by the plaque bacteria cause inflammation of the gum tissue - termed gingivitis. At the same time as this, the plaque may also become mineralised forming calculus

(tartar) which is usually very tightly bonded to the tooth surface. This is also frequently accompanied by very bad breath!

If gingivitis is allowed to go unchecked the plaque bacteria will start to penetrate below the gum line, leading to destruction of the bone and other tooth supporting structures - a condition termed periodontitis. This is a far more serious condition and - if left untreated, results in tooth loosening and eventual tooth loss.

If your pet's breath leaves a little to be desired you should seek help! Dental disease is best prevented, but failing that, early diagnosis of problems can make a real difference to your pet's health.

Park Veterinary Hospital

TGI Sunday!

The Biggest Barbecue Ever (in Totley!) II. Sunday June 27 at Green Oak Park 5pm - 7pm. After the success of last year (over 400 burgers & hot dogs served), Totley Rise Methodist in partnership with Totley All Saints Church are holding another barbecue for the whole community. Along with tasty food there'll be a couple of bouncy castles, fire engine, games and a live band playing your rock n roll favourites. And it's all FREE! Three Praise Services in Green Oak Park will follow - July 4, 11, 18 all starting at 5pm.

For details call Totley Rise Methodist Church on 236-3157

Sally and Mark would like to welcome you to the

THE GROUSE INN

For a friendly warm atmosphere with homemade pub food served every lunchtime from 12 to 2:30pm and evenings, Tuesday through to Saturday from 7 to 9.30pm all day Sundays 12 to 9pm

Evening functions and Bistro meals by arrangement

Please phone with bookings on 01433 630423

The Grouse Inn on the A 625 Froggat Road.

Chiropodist

Mrs Anna Steele, S.R.N.

Qualified Chiropodist

M.S.S.Ch. M.B.Ch.A.

Surgery behind Dore Chemist
Townhead Road

Tel: 0114 236 2048

24 hour answering service

Eyes in Focus with



**MARTYN
KEMP
OPTICIANS**

Now open at 63 Baslow Road, Totley Rise, Tel: 236 4485
(Formerly Stuart Fordham Opticians)

- Eye examination & sight testing, also Diabetic screening
- 100's of Spectacle frames from budget to designer names
- Wide range of lenses available
- All types of Contact Lenses, check-up, fits & solutions
- Low vision aids, Ready readers; Dietary supplements

Local for all things focal

Also at 739 Abbeydale Road, 255 6554; Shirecliffe; Woodhouse; Stocksbridge; Walkley; Firth Park; Manor; Rawmarsh & Rotherham town centre
Website; www.mko.co.uk Email: martyn.kemp@mko.co.uk

Twinkle toes

We are very excited about our second shop opening in Sheffield (next to Fulwood post Office). We would like to take this opportunity to introduce new members of staff, Julia and Nancy. They are currently under intensive training with Start - rite together with on-the-job experience. they will be with Yesim and Burcu on the sales floor.

As a further development, please do not hesitate to ring us for a private appointment if you feel you would benefit. You can arrange for an appointment at either shop, between 4pm and 6pm on Saturdays or 5pm to 6pm on Thursdays.

We are improving our service level every day and would appreciate it if you could give us any feedback next time you visit our shop which can help us improve our service even further.

Opening Hours for both shops:

Tues - Fri (10am till 5pm), Sat (10am till 4pm).

1 Totley Brooke Grove (off Totley Brook Rd),
Dore, Sheffield
Tel: 0114 262 1785

7 Brookland Avenue,
Fulwood, Sheffield
Tel: 0114 229 555

10% OFF*

Gifts for baby, toddlers & adults too!

Jewellery, Wooden Toys, Soft Toys, Fancy Dress, Baby Gifts, Christening Wear, 'Angelina Ballerina' Dancewear, Puppets, Pedal Toys, Photograph Albums, Play Tents, Pirate Ships, Toddler T-shirts, Handbags & Purses, Personalised Gifts, Pottery Lamps, Soft Baby Shoes, Greetings cards and a whole lot more...



Tel: 0114 262 1020/262 1500
10 Causeway Head Row, Dore

*Present this ad at Little Mischiefs' shop in Dore to receive 10% off your purchase. Valid until 31-10-04. Open Wednesday - Saturday 9.30-5.00pm.

View from KES

For schools everywhere this is an extremely busy time of the year. It is exam time. The Y11 students finish around the middle of May, we have Y10 students on work experience as well as doing their mock exams and we have Y9 students doing SAT's. Despite what can be a particularly stressful time for a number of students, the atmosphere at KES remains relaxed and purposeful. What follows are my brief notes on some of the main events, which have taken place or are due to take place in the forthcoming weeks.

OFSTED. We were, overall very pleased with the outcome of the Inspection, which also received extremely favourable reports in The Star and The Sheffield Telegraph.

A full copy of the report can be seen on the OFSTEDs website at : www.ofsted.gov.uk/reports

The New School Building. The contract with the consortium called Priorgate has now been signed. Work is progressing well, and is currently on schedule.

The management of the school meet with Gleasons (the builders) on a fortnightly basis to discuss progress and to share concerns. It is at these meetings that we have reported to us any issues, which have arisen from our local residents and how Gleasons are dealing with these. We are all keen that any difficulties, which may arise are quickly and effectively dealt with. The company has a help line on 0800 783 3741

Dore Festival. Maureen Cope, one of the organisers of the Dore festival, has contacted me about King Ecgbert School becoming involved at some stage during the 2 week festival. At the time of writing I know that Maureen is in discussions with Sam Turner, our Head of Music about performing an open air concert one evening

during the festival. So I am hoping that this will take place.

MP's back to school day. You may or may not know that Friday 23rd April was 'MP's back to school day.' We invited Richard Allan MP and Nick Clegg MEP to come along and speak to our youngsters about what they do and to take questions from them. The questions varied from 'Have you met Tony?' to 'Knowing what you know now, was invading Iraq a good idea?'

So as you can see the session was light hearted as well as very informative. As well as these questions, some of our students pressed them on local issues such as why are there not more traffic calming measures on Furniss Avenue and Totley Brook Road. We only had an hour with them before they left for 2 other schools, but it was certainly an enjoyable experience.

Adult Education Classes. Since Christmas we have been able to run (free of charge) adult education classes in ICT and Asian cooking. These have proved very popular, particularly the ICT sessions, which in total attracted around 60 adults. These have stopped for the moment. However, we are working with Sheffield College and they will be using us as a centre from September for a number of courses.

The publicity has not yet been produced, but when it comes out, I hope as many local residents as possible will take advantage of the courses which will be put on here at KES. As these courses will be delivered by Sheffield college tutors there will be a charge involved.

The Wizard of Oz. I cannot write about the school and the community without mentioning our production of the 'Wizard of Oz'. For three evenings in March the hall was sold out. The quality of performance from everyone involved was spectacular - I

was extremely proud to be associated with the school and they will now be performing at the Merlin theatre for two nights in July. I know that the local residents who came along to watch thoroughly enjoyed themselves and I hope next time, when we are in the new school that we shall have even more of you attending.

Charity week. During Charity week at school we raised nearly £1,000. The school council decides how we spend this money. This year half will be going to the Sheffield Childrens Hospital, while the other half will go towards the building of a community room in the New Mosque which is being rebuilt on Wolsley Road. The governors from the Mosque will be coming up to school to meet the Headteacher and to have a look around the school in May.

On this subject, we are continually trying to improve community links with all our local communities. I, with Mazher Baig, our Urdu teacher go to the Mosque on the last Thursday of every month, to speak to the members of the Mosque. These visits promote greater understanding of one another and now some of our school governors have expressed a desire to accompany me on these visits.

As well as this, on the last Wednesday of every month, I with Mazher and Gavin Walker, our Inclusion coordinator go to Highfield Library from 4.00-5.30pm to make ourselves available to local residents of this area. We call it a 'Drop-in surgery,' where anyone can walk in off the street and speak to us around any issue concerning the school.

If you have any questions to put to me or any comments to make, could you write to me at King Ecgbert School, Furniss Avenue, Dore, S17 3QN

*Sean McClafferty, Deputy Headteacher
i/c Community and Technology College
Status.*

Internet Software Services

including

Custom Software
Web Development
Performance Investigation

**for free impartial advice
contact Andy Stratton**

Tel/Fax 0114 236 1138
Mobile 07812 448142

enquiries@strattonenglish.co.uk

**Stratton & English
Software Ltd**

www.strattonenglish.co.uk

Greens Home & Garden Supplies

Be ready for Spring
October-March
10% off mower servicing
Free local collection/delivery

Hardware,
Household Goods & Gifts,
Watch Batteries Supplied
and Fitted, Shoe Repairs,
Dry Cleaning, Wild Bird Food,
Garden Requisites,
Cycle Spares & Repairs

Shear Sharpening

Stockists of Dore Village Society Publications

10 Causeway Head Road
Telephone 236 2165



J S Jackson & Sons of Dore

**Plumbers
Central Heating Engineers**

**Gas • Oil • Solid Fuel
British Coal Heating Engineers
Corgi Licensed Gas Installers**

**ESTIMATES FREE
(0114) 258 8928**

After Hours & Enquiry Service
Repairs, large and small, receive prompt attention

- Glazing • Wall Tiling •
- Bathrooms • Showers •

Garden & Craft Centre

WORK Ltd (Worthwhile Occupational & Recreational Kraits Ltd) is an innovative voluntary organisation whereby a number of Young Adults with learning difficulties can, under instruction, produce a wonderful range of goods for sale within their Craft/Coffee Shop and Garden Centre at Ringinglow Road, Rents Green.

WORK Ltd was founded in 1995. Since then they have seen tremendous development thanks to the support given by the local community and a wonderful group of volunteers who give up their time to help in any way they can to make WORK Ltd the fantastic place it is today.

A warm welcome awaits everyone who visits the Garden/Craft Centre. Why not go along and sample their delicious menu with lots of home-made soup and cakes, and the gift shop is a real jewel in the crown.

Also browse around the well-stocked greenhouse. View the wide range of concrete garden-ware, water features and a lovely range of garden furniture, planters and wildlife accessories.

Open Mon - Fri 9.00 - 4.00 pm; Saturday 10.00 - 4.00 pm. Closed Sundays and Bank Holidays

WORK Ltd also take private evening bookings for ladies' groups, gardening groups, etc.

Park Celebration

The first National Park Week will be held this year from 1 to 9 July aiming to celebrate and raise public awareness of these protected landscapes. Our 13 national parks attract about 100 million visitors each year.

The Cairngorms and Loch Lomond and the Trossachs are the two most recently established and the New Forest and the South Downs should be set up in the near future. Further national parks are currently being considered including one for the Mourne mountains of Northern Ireland.

Visit www.dorevillage.co.uk

One man went to mow
. . . . but his mower wouldn't go!

Now is the time to call

Mower Mender

and be ready for the forthcoming growing season

A local friendly business servicing all makes of garden machinery

phone: 0114 236 6958

mobile: 0781 2211149

Blade Sharpening and Collection and Delivery Service Available



MORTGAGES

All Types of mortgages arranged. Access to thousands of mortgage schemes.

- ▶ Residential lending
- ▶ Remortgages
- ▶ Buy to let
- ▶ Commercial lending
- ▶ Adverse credits/CCJ's



INDEPENDENT LENDING

0870 200 7878

www.independentlending.com

Forsyth Enterprise Centre, John Street, Sheffield S2 4SU

YOUR HOME IS AT RISK IF YOU DO NOT KEEP UP YOUR REPAYMENTS ON A MORTGAGE OR OTHER LOAN SECURED ON IT.

Written quotations available on request. The Financial Services Authority do not regulate mortgages

Monty's of Sheffield

288 Penistone Road

Sheffield S6 2FS

Tel: 0114 221 4333

SALES • SERVICE • PARTS

Authorised
Dealer

 SUBARU®

The All-Wheel Drive Range

AUTHORISED DEALER

ISUZU

Domestic Electrical Wiring

Electrical Repairs

Security Lighting

Loft Insulation

Flint Electrical

Est. 1981

51 Meadow Grove

Totley

Sheffield

S17 4FE

Telephone:

(0114) 2350019

£1-Liners

To cash in on unwanted items or promote your services locally, simply complete a form available at Greens shop on Causeway Head Road (or phone Sheffield 236 9025) and return it along with a fee of £1 per line.

CHARTERED ACCOUNTANT

Tony Ball BA FCA
Many years experience at all levels.
No problem is too big or too small.
Personal service and complete confidentiality.
Tax returns, small businesses, trusts VAT etc
Phone 0114 2361471
e-mail amjballfca@blueyonder.co.uk

FOR SALE A very nice 3 bedroom semi-detached house in BROADWAY, Worcestershire. Easily run. Good size mature garden. Garage. In a trouble free Cul-de-Sak.
Phone 0114 262 0197

PRETTY LITTLE FINGERS

JADE MILES Nail Art Technician
Childrens nail art parties for girls who love being pampered. Phone 0114 2740434 or Mobile on 07834896134
email: prettittlefingers@yahoo.co.uk

FILMS FOR ANY OCCASION

I will capture your special day on film and turn it into a more exciting video/DVD memory using music, special effects etc.
Jane Lavender (0114) 262 0238
janelavender@supanet.com

HARDY'S GARDEN MAINTENANCE

Regular maintenance, grass and hedges cut, turfing, seeding, baskets, pots planted, gardens cleared, general landscaping, rockeries, shrubs planted, pruned. Tel Richard 0114 234 1592 Mob 07747678271

COSTA DEL SOL. Stunning penthouse apartment to let near Marbella. Views over golf course and to the sea. Sleeps 6, 2 bedrooms and 2 bathrooms. Fully fitted, A/C, TV etc. Details - Mike Cox 0114 2350534 or mikecoxsheffield@bigfoot.com

TELEVISION AND VIDEO

RECORDER REPAIRS City and Guilds London Institute. Fully qualified. Over 25 years professional experience. Ex Bunker and Pratley. For prompt reliable friendly service ring Richard on 0114 - 287 6806

CHIROPODY Home Visits Amanda Ross FSSCh. MBChA. DipPodMed
Tel: 07904 919775

CRUMBS Make and Decorate cakes for all occasions. Each cake is individually decorated for you. Call Lucy Cole on 235 2195 or 079 4194 6133
everyone@coles263.freemove.co.uk

QUALITY DECORATING - Interior & exterior. David Guite Decorators. Free estimates. All types of paint finishes, work guaranteed. Tel: 235 0999 or 07889 401317

LANDROVER REPAIR SERVICE
MOT repairs, chassis welding, service & maintenance. Call Ian on 079 7019 2717

MUSIC TUITION. Piano, Electronic Keyboard, Theory, Harmony. Enjoyment or exams. Beginners to advanced. Full prospectus available. Bradway Music: Geoff Henthorn GNSM, Tel: 235 2575

NANNIES, BABYSITTERS, AFTER SCHOOL CARE. Over 1000 CRB checked, interviewed & vetted carers. Call Kate or Sarah 0114 236 9452 or visit our website www.flexiblechildcare.co.uk

LAMINATE FLOORING For a quality fitting service and free friendly advice, call Peter Holdsworth on 0114 255 0232

SONOMARA GROOMING SALON FOR DOGS
Most breeds catered for, Lane Head Road, Totley S17 Tel: - 0114 235 3899

PLUMBING, HEATING & GENERAL HOME MAINTENANCE 35 years qualified tradesman. For free estimate and competitive rates call John Ford on 0114 235 9746 or Mobile on 07761 569068

COTTAGE ACCOMMODATION in Dore short term, especially suitable for visiting friends and relatives; Tel: 236 6014

DROP OF A HAT CEILIDH BAND
Traditional Barn dances for parties anniversaries, birthdays, fund raising, weddings etc. Suitable for all ages & abilities. For details phone 281 9397

PLUMBER - Steve Higgins
Plumbing, installations and repairs
J.I.B. registered. Free estimates
No job too small Tel: 0114 236 3275 or mobile on 07773 039443

ESTABLISHED highly qualified mobile hair stylist with over 16 years experience. For appointments please telephone Suzanne on 07899 996660 (Daytime) or 236 8797 (Evenings).

COLOR ME BEAUTIFULL Looking good every day can be easy when you know what is special about YOU - Colour analysis, make-up, weddings, style analysis and more! Gift vouchers available - what a great present! Phone Sue Potts, Color Me Beautiful Image Consultant, 59 Bushey Wood Road, S17 3QA. Tel: 0114 236 2968

NEW & RECLAIMED OAK STRIP FLOORING for sale. Fixing service available. Tel: 235 1934

HORIZON ELECTRICAL
All aspects of domestic electrical work. Competitive rates. Phone Totley 236 4364

ENGLISH LANGUAGE/LITERATURE
GCSE & A Level tuition. Tel 236 8493

CURTAINS AND ACCESSORIES
making service. Also interior design advice
Tel: 236 1510

COTTAGE in WHITBY. Cosy cottage in the heart of Whitby old town, available to rent throughout the year. FGCH, sleeps 4 (one double, one twin), washing machine, microwave etc. For further information and price list, phone: 0114 235 6143

RUBBISH REMOVED. Beds, settees, garden & DIY etc. Garages cleared. Courteous, reliable service. Environment agency registered. I.D. carried. Phone Mick on 0114 268 1330 or 07710 446438
<http://members.lycos.co.uk/draggletail>

SILVERWARE and CUTLERY
Repairs and re-plating and refurbishing
Contact Lawrence on 0114 272 9997

TO LET: Swallow Cottage, Totley Bents Beautifully renovated stone built property accommodates 4. Phone 0114 236 7806
English Tourist Board 4 star rated.

QUALITY interior & exterior **DECORATING** Hinchcliffe Decorators, the professionals. All work guaranteed, estimates free. B.D.A. Member. Please phone 262 0584 or 0797 7956979 (mobile)

HOLIDAY COTTAGE TO LET overlooking the sea in a beautiful fishing village on the Moray Firth, N.E. Scotland. Sleeps 6 people. Available all year from £175 per week. Tel: 262 1043 for brochure.

HATE IRONING?
Let me do it - I love it! (what's more - I'm good at it!)
MOBILE IRON - collection and delivery eg: Shirt 95p, T shirt 55p, Jeans 95p Kids' clothes 0-8 yrs half price,
Tel: 2352511 or 07817 107566

HOLIDAY IN THE WEST COUNTRY?
One time DORE resident would welcome you to our B&B situated on the edge of Dartmoor in the National Park close to the village of Holne. We offer a twin bedded room with private shower and uninterrupted views of the moor. Ideal 'stopover' when travelling to and from Cornwall or the Channel Isles.
www.brackenwood-dartmoor.co.uk
Phone/FAX 01364 631246 or
email - Ann@ajacklin.freemove.co.uk

DRAMA CLASSES for children. Qualified theatrical tuition. Age 6-10; Wednesdays 4.30-6.00 & Fridays 4 - 5.15. Age 11-16; Wednesdays 6.00-7.30.
Dore & Totley United Reformed Church Hall, Totley Brook Road. Jackie Collins School of Drama Tel 236 7564

THE OLD SCHOOL DORE Excellent venue for meetings, conferences, classes, parties. Children's parties a speciality. Bookings to the Vicarage Office on 236 3335 or ring 235 1171

PICTURE FRAMING Local. G Thomas 236 3431

WANTED help to produce the editorial in this magazine. Phone 236 9025

Stars in Dore

Summer may not be the best time to look at the stars but it is certainly a season with ample daylight in which to ponder on the past and future of the natural world. The writer always remembers a childhood melancholic feeling on hearing distant music coming from merry-go-rounds at summer fairs. He hopes that starry nights in Newfield Lane will not become a distant memory for Dore residents, too. Street lights and car headlights, not to mention rows of security floodlights above the Lane, will possibly soon destroy the magic of Wagg Wood.

The same seems to be happening in our neighbour village, Hathersage. The Derbyshire planners have allowed rows of tall intrusive buildings, factories and penthouses, along the slopes of the hills in what is now called Hathersage Park. The development runs beside the old railway line and would look more appropriate in the docklands of east London. To get the best view climb the lane that winds up south-westward from Leadmill bridge near the Plough Inn on the Grindleford road.

Let us hope that our Newfield Lane does not become such a busy floodlit highway with other 'rural' developments skirting our section of the Green Belt in Dore. Before it is too late make sure you soon visit Newfield Lane in the warm summer twilight to watch Venus perched above the crescent moon, or the evening sunlight filtering through the beech trees! Listen to the chatter of Redcar brook, the sound of dry leaves under foot and the indescribable birdsong. An increase in vehicles plus concrete curbs, pavement and street lights will totally destroy all this.

Visitors to our night skies, that is, the celestial variety, have been largely unnoticed so far this year. We are thinking of the comets, meteors and asteroids. One faint asteroid was reported passing uncomfortably near to Earth, just a few tens of thousands of miles away. Comets fall into the Sun relatively frequently, or, at least, they break up at close encounters with the Sun or the major planets. They can be watched on one of NASA's websites, that associated with the solar space observatory, SOHO.

Comets and stars can be seen from Dore from this space observatory all the year round, day and night. One can even de-archive the images from previous days and months, and see magnificent cometary displays even at the height of summer. Comet Bradfield is well worth a visit with its immense tail swirling past the Sun (2004 April 18 to 22 on sohowww.nascom.nasa.gov/data/realtime/realtime-update).

This space observatory has discovered 750 new comets, and most of them were found by amateur astronomers. This is because NASA allows immediate access to all these solar images to the public. If you remember comet Hale-Bopp some years ago you may be interested to know that it

will be at 20 times the distance to the Sun on 2004 August 22. The other familiar object, comet Halley, will be at 30 times the Sun's distance, both being extremely faint but on well-determined orbits known for centuries to come. The writer finds this reassuring, more so than can be said for Newfield Lane.

The big event of the year is undoubtedly the transit of Venus across the face of the Sun on 2004 June 8 mentioned in the spring issue of Dore to Door. The timing (in British Summer Time) is first contact at 06.20, greatest transit at 09.23 and last contact at 12.24. Venus will be at a distance of 43,211,794 kilometres, just over a quarter of the distance to the Sun. Although only a small black dot against the Sun's disk, one thirtieth of the diameter of the Sun, the planet Venus is actually about the size of our Earth (12,104 kilometres).

Do not, under any circumstances, look at the Sun directly with the naked eye or through binoculars or telescope. You would easily frizzle up your retina in fractions of a second, or seriously impair your sight. The transit must not be observed without special precautions.

The best method is to project the Sun's image onto white card placed a large distance from one eyepiece of your binoculars or from a telescope steadied by a tripod. Attach to your instrument a cardboard shield to exclude the surrounding sunlight. Plastic parts within instruments are almost certainly at risk of catching fire, so be careful and watchful of what you do, and turn your back to the Sun! And, with binoculars, do not forget to cover up one of the main objective lenses.

If you imagine the Sun's face as a clock, Venus enters at 7 o'clock and leaves at 4 o'clock, well to the bottom of the Sun. The best thing to do on June 8 would be to go to the Peace Garden or Winter Gardens in Sheffield where the Sheffield City Council

is joining the Sheffield Astronomical Society and the Sheffield Hallam Star Centre in putting on a display, real images and explanations, for the public. If it is cloudy you can watch the transit on the Internet at the above NASA website or perhaps on the television.

Meanwhile, readers with Internet might like to see what last year's transit of Mercury (2003 May 7) looked like according to the Swedish astronomers' dramatic movie from the Canary Islands (www.solarphysics.kva.se/Mercurytransit).

Time spent on summer astronomy in a comfortable deckchair can be utilised to ponder on the history of our village. Take our King Ecgbert of Wessex who led his army to Dore in the year AD 829 to battle against King Eanred, thereupon becoming the first overlord of all England. Thank you Messrs Dunstan, Millican and Heslop and the Dore Village Society for their fine historical book, 'The A to W of Dore'.

The planets were not too well placed for Ecgbert to see in AD 829. Jupiter and Saturn were in Leo, Mars in Virgo, Mercury near Gemini and Venus near Taurus. A successful summer battle could have been celebrated throughout the night with brilliant Venus rising just before sunrise as bright as it was in our March/April skies this year. Without knowing the month of the battle, of course, we cannot say much more. In many ways it would be nice to rely on simple omens like those of the old days!

Village Notice Board

The Dore Village Society has a smart new notice board on Devonshire Terrace Road.

If you have a public notice about events in or of concern to the village, please contact Anne Elsdon on 236 0002 or John Baker on 236 9025.

A Bespoke Financial Planning Service for Personal & Corporate Clients

- Investments
- Pensions
- Mortgages*
- Life Assurance
- Tax Efficient Savings
- Wills & Estate Planning
- Pre and post Retirement Advice
- Wealth Management Specialists

Local & Independent

Authorised & regulated by the Financial Services Authority



PHFS

www.phfs-ifa.co.uk

*Mortgages are not regulated by the FSA

*your home is at risk if you do not keep up repayments on a mortgage or loan secured on it.

Contact us on 0114 235 3500

Offices at:- 160 Baslow Road, Totley
14 High Street, Staveley

63 Middlewood Road, Hillsborough
61 Market Street, Eckington

Diary - Summer 2004

MAY

- 27-29 **Playing Away** bitter sweet comedy by Judith Shaw, Apex Players Sheffield Library Theatre 7.30pm Tickets: £5 and £4 from 269 3329
- 30-31 **Sheffield & District Orchid Society** Chatsworth Show Cavendish Hall 11am-5pm & 11am-4pm
- 31 **Bamford Sheep Dog Trials & Fell Race.** Recreation ground 8am-6pm 01433 651588

JUNE

- 5 **Soiree** at Whiston Manorial Barn with Sheffield Society for the Encouragement of Art. Details from 236 0941
- 7 **Gardening in Shady Places** talk by Penelope Scott-Rowley, 7.15pm. Sheffield Botanical Gardens
- 8 **Ecoflow and Bioflow** talk by Mrs Jenny Ryan for Dore Mercia Townswomen's Guild, 10am, Dore Church Hall
- 8 **Well Dressing** talk by Barbara Jackson for Dore Methodist Church Tuesday Group, 7.45 at Church Hall
- 9 **For Valour** the story of the Victoria Cross. Talk by Mr K Loxley for Dore (A) Townswomen's Guild, Old School. 2pm
- 9 **Old Maps of Derbyshire & AGM** Talk by James Dickinson for the Dore Village Society 7.30pm Methodist Church Hall. Admission free - everyone welcome
- 12 **Summer Fair** St Luke's Hospice 1pm - free entry
- 12-13 **Peak District Products** Exhibition and sale of art, craft & design made in the Peak. Cavendish Hall, Edensor 10am-5pm Free admission
- 13 **Music & Words** summer evening event for St Luke's Hospice at Hassop Hall, 6.30pm 236 9911
- 15 **General Practice in the early 20th century.** Talk by Dr Ivy Oates for Sheffield Totley (M) Townswomen's Guild, 10am Totley Rise Methodist Church Hall
- 16 **Hamster and small pet show** Bradway Scout Centre, Sir Harold Jackson School Bradway 11am to 3pm. 236 5445
- 16 **Tattershall & Belvoir Castles** - visit by Sheffield Society for the Encouragement of Art. Details 236 0941
- 16 **CPRE AGM** 6.30pm, Wood Lane House Farm, Countryside Centre, Wood Lane, Stannington.
- 16 **Lecture** "Linley, a Continuing Tradition" by Nicholas Merchant ISVA for Hallamshire Decorative & Fine Arts Society. 7.30pm in Theatre 4, Arts Tower, University of Sheffield. Details from 01433 630103.
- 18 **Charity Golf Tournament** Abbeydale Golf Club for St Luke's Hospice details 236 9911
- 19 **Dore Boundary Walk** - see posters for details or phone 236 5043
- 22 **Perennials** talk by Brian Corkerline - plants for sale. 10am Sheffield Botanical Gardens Details from 236 1568
- 22 **Old Time Music Hall** talk by Joyce Pringle for Dore Methodist Church Tuesday Group, 7.45 at Church Hall
- 26-27 **Totley Open Gardens** over 12 gardens open from 2-6pm. Details from 236 2302
- 26-27 **Exhibition** of watercolour and pen & ink drawings by Brian Edwards and Rod Kay at Baslow Village Hall, 11am-4pm. Free admission.
- 27-4 **Bakewell Carnival Week** - Carnival Day 3rd July
- 27-11 **Dore Festival Week** - see aside

JULY

- 1-9 **National Park Week**
- 4 **Specialist Plant Fair** 10.30am-3pm Sheffield Botanical Gardens
- 3 **Summer Fete** at Mickley Hall, 2pm - 5pm Details from Jackie Short on 236 7491
- 6 **Canada** talk by Joyce Gould for Dore Methodist Church Tuesday Group, 7.45 at Church Hall
- 12 **Hot Borders** talk by Stuart Dixon, Sheffield Botanical Gardens 7.15pm Ddetails from 236 1568

- 13 **Thirty Years of Commercial Radio** talk by Mrs Jo Harrison for Dore Mercia Townswomen's Guild, 10am, Dore Church Hall
- 14 **Birthday Party** at Dore Grill Restaurant for Dore (A) Townswomen's Guild, 12noon
- 20 **Annual Dinner** Dore Methodist Church Tuesday Group Details from 236 7639
- 24 **Working day** with the Friends of Whinfall Quarry Gardens from 11am to 3pm. 236 1113
- 24 **Summertime On Broadway** an open air concert at Whirlow Hall Farm in aid of the Trust and Macmillan Cancer Relief Details from 235 2678

AUGUST

- 4-5 **Bakewell Show** 9am-7pm daily 01629 812736
- 7-8 **Great Longstone Art Show** 10.30am-5.30pm
- 10 **Birthday Celebration** Dore Mercia Townswomen's Guild, 10am, Dore Church Hall
- 12 **Bramham & Stockeld Parks** Wetherby. Visit by Sheffield Society for the Encouragement of Art. Details from 236 0941
- 21 **Grindleford Horticultural Show** Bridge Playing Field, from 2pm - 4.30pm
- 28 **Froggatt Show** Stoke Lane 2pm-5.30pm

DORE FESTIVAL 2004

27th June to 11th July

- Sun 27th **Village Gardens Open Day**, 2pm - 6pm
- Mon 28th-4th **Walking Week.** Local walks arranged by Dore Village Society - see notice board for detail
- Mon 28th **Open Morning** Dore Primary School Whiteboard Technology in Action
- Tues 29th **Over the Garden Wall.** Village Walk 2pm and 7.30pm led by Arroll Winning booking essential tel 236 0002
- Thurs 1st **Open Morning** Dore Primary School Whiteboard Technology in Action
- Sat 3rd **Village Well Dressing** Dore Village Green **Guide Well Dressing** Devonshire Terrace Rd **Well Dressing Exhibition** Dore Old School 10.30 - 5pm **Summer Concert** Dore Gilbert & Sullivan Society, Dore Church Hall 7.30pm Tickets Tel 236 2299
- Sun 4th **Well Dressing Exhibition** Dore Old School 10.30- 5pm **Well Dressing Service** Dore Village Green 3pm Afternoon Cream Teas, Methodist Church Hall 3pm
- Mon 5th **Family Fun Run** Dore Primary School 7pm **Lord Conyers Morris Men** Devonshire Arms 8pm
- Tues 6th **Tracking the Dore Story** with John Dunstan Village Green 2.30pm, booking via tel 236 0002 **A Detective's Tale** Talk for Dore Ladies Group Dore Church Hall 7.45pm. Visitors Welcome
- Wed 7th **Open Air Theatre** 'As You Like It' The Company, Dore Village Green 7.30pm Interval Collection
- Thurs 8th **Open Evening** Dore Male Voice Choir & Dore Mercia & Totley Townswomen's Guild Choir, invite you to Dore Church Hall, 7:30-9:30pm, No ticket required Collection for Charity
- Fri 9th **Stray Cats in Dore.** An evening with Carolina Bowie and Gilian Cally, Dore Parish Church 7.45pm Tickets £5/£4
- Sat 10th **Dore Scout & Guide Gala** Recreation Ground
- Sun 11th **Festival Songs of Praise** Dore Methodist Church 6pm

See Dore Village Society notice board. for full details of events.