

# DORE to DOOR

DORE VILLAGE SOCIETY

No. 88 WINTER 2007

ISSN 0965-8912

## Inside:

Letters	page 4
Oral History	page 6
Apple Day	page 16
The Wildlife Garden	page 28
Book Reviews	page 30
and lots, lots more ....	

## Saving our open spaces

Dore Village Society is seeking to register three large open spaces in the village as village greens; Dore Recreation Ground, Totley Brook Playing Field and Kings Croft Playing Field (adjoining Dore Primary school). All three open spaces are well used for recreation and provide an important local amenity for residents.

The Commons Act 2006 which came into force on 6 April this year is creating a renewed interest in communities registering new village greens. The Open Spaces Society who provide advice on registration state that the benefits are to:

- \* Secure permanent registration of the land as a village green
- \* Protect the land from development
- \* Secure the right of local people to enjoy the land for recreation
- \* Give it a new status as land for the community, to be valued and enjoyed
- \* Ensure that owners are aware of the established recreational function of the land so helping to avoid future conflicts.

All three areas are owned and maintained by the Sheffield City Council but they have refused to voluntarily register the land, the cheapest and easiest route. The DVS is very concerned that the land may be under a threat of development in the future because the Council say that they must consider if they would oppose "Registration of the land under the 2006 Act, as it would affect the value and future use of the land in the wider interest of the City." ie it could be sold for development or used for other purposes.

The Dore Village Society has decided to apply for registration. If the land is to be safeguarded for the people of Dore then we must provide evidence of its use for recreation over the past 20 years. We shall display plans of the areas in the Society's room in the Old School on the first Saturday of December, January and February in order to invite evidence of local residents' use of the land.

We are asking all local residents who have used these areas for recreation and who wish to see them available for future enjoyment to come to the DVS room in the Old School on those dates or to contact: David Crosby on 2621127 or at david@ganddrosby.co.uk.



*Dore Village Society Christmas card for 2007 (commissioned in full colour from local artist Bill Kirby). On sale in the village, price £2.50 per pack of 5, from Valerie of Dore, Dore Opticians, Dore Petrol Station or the DVS room at the Old School.*

## Annual Wassail Walk

**Thursday, December 27th**  
**Approx five miles**  
**10 am start**  
**from Dore Old School**  
**Hot drinks and mince pies**

## Christmas celebrations

Once again Dore Village Society will be sponsoring and setting up Christmas lights around the village and a Christmas tree outside the Country Garden. The tree lights will be switched on at 6pm on Wednesday 5th December. As in past years the Guides and Brownies will be there to sing Christmas songs and carols around the tree for the switching on ceremony.

Many of the local shops will also be opening late that evening, so come along and join the fun and do some Christmas shopping at the same time. The shops will be advertising late opening times and more details will be on the village notice board.

Dore is fortunate to have such an excellent range of local shops restaurants and hostleries. Between them you will find a wide range of ideas for Christmas presents, all the food and drink you need for your Christmas celebrations as well as places to go to with family and friends over the festive season.

Anne Elsdon

## Whirlow Wheel

Question marks still hang over the future of Whirlow Wheel on Limb Lane Playing Field. The main building having collapsed after years of neglect by the Council, temporary safety barriers have now been installed and there has been some discussion about its future amongst interested parties.

Proposals to sell the site for building seem to have been ruled out, but the big problem over its future will inevitably be funding. One possibility under consideration is the construction of an eco building within the original footprint, which would demonstrate best practice to builders etc as well as being used for school visits.

Most importantly from the Dore Village Society's point of view is that the impressive wheel pit is preserved and proper interpretation boards installed.



**Sundays 9th and 16th December**  
**Admission £5 each at the gate**  
**covers visit to Santa's grotto,**  
**presents, drinks, mince pies and as**  
**many train rides as you can get!**

## New Village Store

The recent make-over of the newsagents shop on Causeway Head Road came as a complete surprise to most people in Dore. Although we knew a refurbishment was overdue, Manager Pam Maltby kept the details and her idea for the new name close to her chest until the new signage actually went up.

Now Pam and her team of the two Sue's, and Janet can be seen working behind a new counter, complete with the latest electronic tills, but still offering the same friendly service. Not only are there new display units for magazines and newspapers, but a complete new range of items for sale, all introduced following the careful questioning of customers.

The shop opens from 6am Monday to Sunday, and most of the week closes at 6pm. It stays open until 7pm on Wednesdays and Saturdays for the lottery, and on Sundays until 12.30pm.

## Jean Dean

We are sorry to report the sudden death of Jean Dean in late October. She was for many years a regular contributor to the magazine with her Jean Recalls column. Her knowledge of past events and people in the village proved invaluable to the editor and she will be sorely missed.

### DORE VILLAGE SOCIETY

Registered Charity No. 1017051

*The Society aims to foster the protection and enhancement of the local environment and amenities within Dore, to encourage a spirit of community and to record its historic development.*

#### Chairman (Dore to Door)

Mr J R Baker 236 9025  
8 Thornsett Gardens, S17 3PP.

#### Vice Chairman (Planning)

Mr D Heslop 236 5043  
41 Church Lane, S17 3GT.

#### Treasurer

Mrs M Watson 236 5666  
4 South Court, S17 3PN.

#### Secretary

Mrs A Slater 236 6710  
6 Old Hay Close, S17 3GQ

#### Committee

Mrs L E Baker 236 9025  
(Dore Show & FEW)

Mr D Bearpark 236 9100  
(Wyvern Walkers)

Mr G Cope 235 0392

Mr D Crosby 262 1127

Mrs A Elsdon 236 0002  
(Subscriptions)

Mr P Pryor 236 9831

Mr D Ward 236 3472  
(Dore Recreation Ground)



*By popular demand, Dore Village Society has published its own calendar for 2008. This is in A4 portrait format, one page per month, each with its own unique local seasonal view in full colour. It also features a year planner and comes complete with its own cardboard envelope for posting to friends or family. Priced at £5, it is now on sale in the village at the same shops as for the Christmas Card.*

## Free bus travel

From April 2008, all senior citizens and disabled people will be able to travel free of charge on buses throughout the country, using a national photocard. The South Yorkshire Passenger Transport Executive (SYLTE) will be writing to everyone who holds a bus pass, and new passes will be issued in March 2008.

The new pass will provide free travel on buses throughout England from 9.30am Monday to Friday, and all day on Saturdays, Sundays and Bank Holidays. The current South Yorkshire bus pass also provides some additional benefits, which SYLTE will try to include in the new scheme.

If you have any queries, you can contact SYLTE on 0114 276 7575

## News in brief

**Excitement gripped residents** of Townhead Road on the 27th September with the filming of a television commercial for of all places Meadowhall, featuring a large branded lorry turning people's heads and being chased by excited children.

**A Christmas flower demonstration** by Valerie of Dore Florists will take place at Dore Methodist Church on Tuesday 20th November in aid of the charity WORK Ltd. Cost £3.50 including free draw.

**Christmas should be downgraded** and festivals including Diwali and Eid should have equal prominence, the IPPR think-tank has said, but critics think the proposal could damage community cohesion rather than improve it.

## Dore Masonic Hall

The earlier unauthorised removal of a stone gatepost in front of Woodland View, opposite Dore & Topley station, has caused ongoing concern. The listed buildings, formerly the Licensed Victuallers Asylum, were built in 1878.

The Council has now indicated to the owners that there are three options with regard to the stone gatepost. Firstly, they can return the gatepost to its original position and neither listed building consent or planning permission will be necessary.

Secondly they can carry out option one, but taking into account the need for emergency access they can apply for advertisement consent to place a discrete sign advising that emergency access is to be gained from Dore Road.

The third option is to apply for consent to widen the access onto Abbeydale Road South and relocate the stone gateposts. This will involve carrying out additional works to the driveway and the removal of part of the retaining wall along the frontage of the site.

## Christmas Donations

As usual the Dore Village Society has made a number of Christmas donations to local organisations who's activities it encourages and supports.

This year the organisations are:

St John's Luncheon Club  
Topley Rise Luncheon Club  
Dore Open Door Luncheon Club  
Dore Methodist Luncheon Club  
Dore & Topley Lunch Club  
The Open Spaces Society  
Friends of Ecclesall Woods  
Dore Scouts  
Dore Guides  
Sheffield Wildlife Trust  
Transport 17 (Bus replacement fund)  
Friends of Whinfell Quarry Gardens

## Editorial & Advertising

**Dore to Door** is published quarterly by the Dore Village Society and delivered free to over 3,250 households in the area.

If you are interested in submitting an article or letter, have local news to report, or wish to place an advertisement, please contact the Editor John Baker on 236 9025 / 236 9469 or write to:

The Editor;

**Dore to Door;**

8 Thornsett Gardens; Dore;  
Sheffield, S17 3PP.

Email: editor@dorevillage.co.uk

Opinions expressed in articles and services offered by advertisers are not necessarily endorsed by the publishers.

No part of **Dore to Door** may be reproduced in full or part, without the written permission of the publishers.

Printed by South Yorkshire Printers,  
112 Harvest Lane, S3 8EE.

©Copyright Dore Village Society 2007

## Causeway Head crocus'

What a disaster! Four years ago Dore Village Society planted 40,000 crocus corms in the grass verges on Causeway Head Road. The Village has enjoyed the colourful Spring display each year since then.

At the beginning of October, Murphy, the public utilities contractor, working for Transco, dug a trench all the way down the centre of the grass verges on the east side of Causeway Head Road, right through the middle of the crocus beds.

The Village Society raised the alarm with the City Council, Street Force department and they took the issue up with Murphy. On raising the matter with the contractors, they said that in the whole of the digging they did not find one crocus corm, and disputed the presence of any crocus'!

Street Force came back to the Society to say that Murphy had been told by residents that they were digging up corms, but wanted proof that there were any. Needless to say, we do have plenty of photographs to prove it, which have been handed over.

Street Force now say that Murphy will be obliged to give us the money for 20,000 new corms, for us to plant up again. As you can well imagine, we have opted for the alternative of the Council planting the 20,000 corms and recouping the cost from Murphy. We only hope that they go in soon so we don't miss the show next Spring.

## PUBLISHING DEADLINES

Dore to Door is published quarterly in mid February, May, August & November each year. The copy deadline for each issue is the end of the preceding month.

Please forward items for the Spring (February) issue to the address on this page by **Friday 25th January**

We understand from National Grid that they are carrying out a £92,000 investment project to lay 900 metres of polyethylene (PE) plastic medium pressure gas pipe to reinforce the local network, due to an increased demand for gas in the area.

At present the grass verge has been levelled and will have top soil replaced in the coming week. The grass seed will not be sown until the spring. Gas supplies will not be affected by the laying of this pipe.

*David Heslop*

## South West Area Panel

Scheduled dates for future meetings, which will run from 7.30-9pm, include:  
 28 November 2007, Lodge Moor  
 23 January 2008, Dore  
 19 March 2008, Ecclesall  
 21 May 2008, Crosspool  
 23 July 2008, Bradway  
 Details from Tel. 0114 205 3049

## Footpaths are ours

Our forefathers were their makers  
 In their daily trudge to work  
 On farm, in mine, and mill and forge  
 In sun and rain and murk.

Whither went these ancient plodders  
 To feed the folk at home?  
 An O.S. map will show you  
 That they did not merely roam.

To market place, to church, to inns  
 All weathers and no fuss,  
 To wells, to streams, to gather fuel-  
 Their paths bequeathed to us.

Their paths our heritage today  
 Which come at certain cost,  
 Of vigilance and reporting  
 All damage and threat of loss.

Our Council has a department  
 I'd like to introduce,  
 It's friendly and effective  
 Please put it to good use!

*Pat Pryor*

Contact:

Ms K Chandler,  
 Public Rights of Way unit,  
 4th Floor Howden House,  
 Union Street,  
 Sheffield S21 2SH  
 Tel: 273 4448

or the DVS on 236 9831

A final word which comes from the P.R.O.W.: "Lack of use is the main cause of disrepair and obstruction to public rights of way."

# Welcome!

## To your new 'old' Village Store!



You know, in the 'old' days, we never seemed to use the words Organic, Local or Traditional. When I was a kid, my local shop was run by a man called Arthur. He just seemed to have both everyday shopping & useful things but he always seemed to stock something just that little bit different; fantastic biscuits, cakes, sweets & chocolates.

I suppose these days we call it "fine food" but then it was something very special.

In Dore, we've tried to bring that back. The same "old fashioned" feeling & friendliness but adding those special foods & treats we loved so much in Arthur's day..

We hope you like your new 'old' Village Shop as much as we do.

With best wishes,

*Neil McCormick*  
 Proprietor

Fine Italian Pasta & hand prepared cook in sauces



Jams, Preserves & Pickles



Fentiman's Traditionally brewed Drinks



Tyrrell's Potato Crisps



Traditional Baked Farmhouse Biscuits



Mrs Crimble's Cakes



plus!  
 A superb Range of Thornton's Continental Chocolates

The Village Store - 8 Causeway Head Road - Dore - SHEFFIELD - S17 3DT

Part of the Newsplus Group - Sheffield - t: 0114 236 7976

## Letters

Dear Sir,

Scout Bonfire Saturday 3rd November.

I was appalled to see the huge crowd of people, many of whom I recognised as Dore residents, watching this event from the wrong side of the perimeter wall. Their meanness in avoiding the nominal entrance fee to this spectacular event must have deprived the hardworking voluntary organisers of in excess of £500.

Charity obviously begins at home in Dore, to the detriment of the various organisations and social groups the event intended to support.

What an example set by those who brought their children to the "free" show.

**John Collins**

Dear Sir,

We have just returned from spending the weekend with friends of ours who live in Dore village. On Saturday 3rd November we went with them, together with their daughter and grandchildren, to the firework display which was arranged and facilitated by the local Scout Group.

We all enjoyed the display and were pleased to help out this local group, but I felt compelled to write to you as I was so disgusted by the fact that a large group of people (probably as many as those who were inside and who had paid for the display) stood outside the field to watch so they did not have to pay.

The entrance fee was only £3 adults, £1 children and under 5's free which is a nominal amount for all the hard work that was put into the display.

I always thought that Dore was an affluent area with a good community spirit but my judgment was obviously wrong.

I am hoping you publish this letter and it will go some way to shame those residents who were too mean to support one of their local youth groups.

**Patricia Ray, Northants**

*Ed. Hopefully the Scouts will go around with a collecting bucket next year.*

Dear Sir,

Regret that I must take you to task over the article in the last issue about the flooding. This was nothing to do with Streetforce. They are responsible for the highways, their drainage, footpaths & street lighting. The Yorkshire Water company are responsible for watercourses & I understand that they are inspected monthly.

I am reliably informed that the monthly inspection was undertaken before the floods. It identified a disused water cistern underneath the Abbeydale Road South bridge & a request for it to be moved was made. It was not moved & as a result, when the flood water came, it couldn't float out of the bridge, but blocked it, causing the water to demolish a wall & then cross the road, causing the flooding.

**Roger Hart**

*Ed. Following the floods, machinery has been brought into Ecclesall Woods to remove fallen timber from the Limb Brook in order to prevent it washing downstream and creating further blockages.*

Dear Sir,

Autumn Dore to Door - article p18.

I'm not aiming to set off protracted correspondence about apostrophes, but thought you might like to know that (on this subject, at least!) Oxbridge got it right.

The Queen's College Oxford (my alma mater) was founded in 1341 by Robert de Eglesfield, a chaplain in the household of Queen Philippa, wife of Edward III, and named in her honour. One queen - apostrophe before the s for the singular possessive.

Queens' College Cambridge benefited from two royal founders: Margaret of Anjou (Henry VI's queen) and Elizabeth Woodville (Edward IV's queen). Two queens - apostrophe after the s for the plural possessive.

**Philip Hetherington**

*Ed. Thank you Philip, but I bet I have still got it wrong elsewhere in this issue!*

Dear Sir,

I would be very interested to know if other residents share my dismay and concern about the vandalism, fly tipping and blatant drug use and dealing which is occurring at the Limb Lane car park and picnic area.

My wife and I walk our dogs in Ecclesall woods and often use this lovely green space as our way in. Over recent months however we have become more and more reluctant to do so and have noticed a marked reduction in the numbers of families and children using the site. This is most likely to do with the presence of gangs of young men in cars who are (whilst never openly threatening) are nonetheless an intimidating presence. They often leave the detritus of their drug use in the car park and the litter situation has become a major problem. The other day there were half a dozen sacks of refuse, ten stolen hubcaps and an estate agent's for sale sign scattered around.

We are most anxious that what was once a lovely area full of children playing and people happily walking their dogs is

becoming a no go area. The police can only do so much and have been helpful when contacted. Do any readers have any ideas for reversing the worsening situation? Please feel free to contact me at jonnyfaye@mac.com

**Jonathan Jones**

*Ed. You should be aware that a local dog owner recently told me that their dog was caught in a rabbit snare in the copse at the picnic area and was only saved from losing its foot because it was on a lead.*

Dear Sir,

Grey Squirrels.

There seems to be an increase in the number of squirrels this autumn, more than for some time. Many people are suffering damage to their gardens as a result and others are likely to suffer more if squirrels get into lofts of houses.

Government scientists are attempting to develop a sterilisation programme to halt the growth of the grey squirrel population, which is feared to have already reached five million. The red population could die out within two decades unless dramatic steps are taken to curb their bigger, stronger rivals.

Greys destroy trees by stripping bark and have taken their toll on songbirds by taking eggs. They also steal food from garden bird tables and infest loft spaces.

Homeowners can legally dispatch grey squirrels in almost any way - short of bombing them or firing arrows at them. It is illegal to release grey squirrels or to allow them to escape into the wild, under the Wildlife & Countryside Act, so anyone who catches one is obliged to kill it.

Gate traps are encouraged for squirrels that invade roof spaces. The traps should be placed near objects such as brickwork or joists, with yellow maize, peanuts or wheat used as bait. Once captured, the squirrel can be shot in the cage or put into a sack and struck on the head. Drowning is frowned upon. Spring traps are designed to kill humanely and whilst poisoned bait is also legal it is subject to restrictions and is not recommended in buildings or gardens because of the danger to other animals.

Those reluctant to kill squirrels should consider proofing their property with crushed wire netting and metal sheeting and removing tree branches near walls and roofs.

**EB (Name & address supplied)**

*Ed. Rather grizzly descriptions for a village magazine. In fairness grey squirrels do also have their fans, although whether going as far as feeding them is actually in their interests must be doubtful. The sad fact is that they are actually tree rats, not squirrels - "what's in a name".*

## Shelter Watch

A campaign to stamp out anti-social behaviour in bus and tram shelters, has been launched by South Yorkshire Passenger Transport Executive. Shelterwatch encourages people to report incidents such as vandalism and graffiti to Traveline on 01709 515151 or online at travelsouthyorkshire.com

Your own  
interior designer  
is only a call away

**Dulux**  
**design**  
**service**

Contact your local designer  
**Chris Read on 0845 880 6888**

Or visit our website  
**www.duluxdesignservice.co.uk**

## Editorial

Many residents were horrified by the recent destruction to the grass verges on Causeway Head Road, and disruption to parking and traffic, caused by contractors working for the National Grid. The battle to replace the lost crocus bulbs is chronicled elsewhere in this issue. We understand the contractor is obliged to make like for like reinstatement, so this should include bulbs.

However the project raises more significant concerns.

Although adjacent residents and shop keepers were apparently informed of the proposed works, there appears to have been no wider consultation. Had local councillors or the DVS been informed in advance we could have advised the contractors about the bulbs and any other problems likely to arise. It seems the Council's Highways Authority was consulted for permission to work on the grass verges, but not elected representatives of the local community!

Even more worrying is why the work was carried out in the first place. Officials from National Grid explained that the new mains pipes are to reinforce supply ie maintain pressure, due to increased demand. Why the increase? The increased demand may be attributable to recent new housing in Dore rather than changes in consumption patterns. In other words building new houses has placed a strain on this utility necessitating them spending more than £92,000, plus all the disruption to the community. Recent work by the water and electricity utilities has been for

the same reason, and it is us the consumers who bear these increased costs through their charges.

Yet there is no evidence that the planning process factors in these community costs in deciding whether new building should go ahead. If developers, rather than us, had to meet them we might see a more realistic approach to building in the area!

These concerns were put to the head of the Council's planning department who has replied as follows:

"Contractors are required in law to notify the Highway Authority of intended works in the highway. The Highway Authority receives around 20,000 such notifications a year and cannot unreasonably withhold consent. It would be impracticable in the time available and with the numbers involved for the Highway Authority to consult on the majority of cases. Particular attention has to be paid to notifications on many sensitive routes where traffic or safety impacts might be important. On these there are some consultations. Causeway Head Rd is not identified as a sensitive route. There is no duty to consult in the regulations

Utility works are usually improvements to ageing or under capacity infrastructure. Where works are a direct requirement of, or for connection to, new development the utilities charge the developer fully for the works, so these costs are borne by the house purchasers effectively, and not by the general customer of that particular utility. Clearly a significant part of utilities bills to customers is for updating and

renewing old infrastructure, and the operators are required by the Government to carry out such investment.

The Planning Authority is not entitled to take into account the costs of infrastructure connections by the utilities, or indeed any disruption caused, and the utilities have the power to carry out the works without planning permission and to charge the developer. The Planning Authority only has the duty to ensure that in principle a site can be drained. In preparing the City's statutory development framework (the old UDP and the new Sheffield Development Framework) the Council notifies the statutory undertakers so that they can comment if they wish on future housing proposals etc, and identify their own future needs for infrastructure".

None of this invalidates the points. If we had a parish council the notification might have come to it and, unlike Sheffield Council, they would be familiar with local issues.

Secondly the work undertaken by National Grid was not updating or renewing old infrastructure but adding capacity to cope with increased demand created by new housing development in the area. Just as was Yorkshire Water's recent major work in Millhouses Park. No developer paid for these.

As for the UDP or Sheffield Development Framework, these put no forecast figures to infill development in Dore presumably leaving utilities (and us) to guess at what is going to happen!

*John Baker Chair,  
Dore Village Society*

## An Evening with Santa and the animals at **Totley Hall Farm**

*Bring your children to visit Father Christmas and receive a present. Enjoy riding the donkey, Spirit, and holding the new born lambs. Meet Sunbeam the cow and Judy the dog.*

*Only £5 per child, adults free*

*WHEN: Saturday 8th Dec & Monday 10th,  
Wednesday 12th & Thursday 13th December  
6pm to 7.30pm*

*BOOK: Ring to book an appointment with  
Father Christmas 0114 236 4761*

*You can pay on the door.*

*Refreshments will be available to purchase:  
Mulled Wine, Tea, Coffee, Juice, Mince Pies, Biscuits*



## Oral History Collection

*Jean Dean (nee Taylor)  
- a life remembered.*

Jean was born on 13th March 1934 at Rose Cottage, High Street, Dore, the eldest of three children. She had a younger brother Max and a sister Ann. Her father was also born at Rose Cottage although her mother came from Nether Green. Jean's paternal grandparents were both Dore people and lived on School Green Lane (now Savage Lane) before settling in Rose Cottage. Her great grandparents lived at Farm House, Townhead Road.

When Jean was four years old her father was employed as game-keeper and gardener by Lord and Lady Grant at Dore Moor House and the family moved to one of the Lodges.

Lord Grant was managing director of the Sheffield steel manufacturers Thomas Firth and John Brown and the house and grounds required a large staff. Jean recalled "There was the cook and the housekeeper and about four maids and then there was Mr. Biggin who was the butler. There was my father and before the war there were four gardeners. Then there was the chauffeur Charles. We lived in one Lodge and Stanley Biggin had the other; all the maids lived in and Jo, the cook and Charles, who were married lived in the Big House as well. It was all one home then, not split up like now."

At the age of five Jean started at Dore School in the infant class with kindly Miss Dobbs, followed by Miss Hutchinson and the "sadistic" Miss Palmer. Jean obviously suffered in Miss Palmer's class because



*Jean Dean doing what she enjoyed most, chatting at an oral history meeting.* she told us "She used to nip, that was her favourite torture, nip you under your arm. And the lads, she used to pull their short trousers up and whack them on the legs. She used to shout; you could hear her right up in the village."

Jean had only just started school when in September 1939 war broke out. She had vivid memories of that. "I remember Lady Grant's chauffeur, Charles, who was a reserve for the Grenadier Guards coming and painting our windows with this black stuff so that the light wouldn't shine in. I

remember the bombs falling on Fisher's pigsty and the outside toilets on Brickhouse Lane." When asked if she was nervous about the war Jean replied with her usual good humour "No! because my grandmother who lived with us told me that Hitler couldn't possibly get to Sheffield, so we didn't bother really. "Lady Grant, who was a member of the Women's Voluntary Service and the Red Cross had the children going round collecting the silver packing that floated down from planes after bombing raids, for the war effort".

Jean emphasised, "We had a happy childhood. We were quite free and used to play up Blacka or in the woods at Door Moor House". She could not recall any food shortages. "We were fortunate because my father always kept a pig and we had chickens" She added with laughter, "on the ration books, because we kept chickens it said PK and I thought we'd all got something wrong with us". When asked if they ever felt deprived Jean answered "No! because we always had plenty of vegetables. My father used to trap rabbits and of course he had a gun because of the vermin up on the estate, so he could shoot pigeons and things. So, we were never short of anything". Throughout the year Jean's mother would make a lot of jams and pickles. "She used to start with rhubarb and ginger jam, progress to gooseberry, then went on to blackcurrant and redcurrant and finish up with plums and damsons. All out of the big garden".

After the war at the age of eleven Jean went to Greystones School, travelling by

*Leatherhill Farm Meats*



**ORDER YOUR FARM REARED  
TURKEY FOR CHRISTMAS**

- Gold award-winning pork pies
- Meat products direct from our own farm in Bamford
- Our own dry cured hams and bacon
- Full range of home cooked meats
- Freezer packs • Selection of fine cheeses
- Home deliveries every Friday

Anthony and Elise look forward to seeing you in the shop

1 High Street, Dore, Tel: 0114 236 0420

**Country Garden**

**(0114) 236 6281**

**Wishing you a happy Christmas  
and a prosperous 2008**

*As well as a wide and varied  
selection of fruit and vegetables  
we also stock:*

- Longley Farm cream yoghurts •
- Dried and fresh herbs •
- Tip tree preserves •
- Troway Hall honey products •
- Bradwells ice cream •
- Christmas trees (free local delivery) •

*Christmas order forms available  
late November*

*Don't forget we also provide an order  
and delivery service every Friday*

bus to Ecclesall Terminus and tram to Greystones Road. Leaving at sixteen she worked for Walsh's in their office at Broomhill. Jean recalled "They'd been bombed out in town. Walsh's shop caught fire when Marples Hotel was bombed. They had three shops- one in Church Street, one in Fargate and The Mount at Broomhill". Jean left in 1954 when at the age of nineteen she married Don Dean.

Jean recalled some of the Sheffield shops who delivered to Door Moor House when she was young. "A horse and trap used to come from Pollards coffee shop in town, Arthur Davy's and Sharman's would deliver groceries and Mattocks came with meat for the Big House". Her mother however patronised one of the four butchers that were in the village at that

time - Jack Thorpe's, Levesley's, Mrs Wostenholme and the Co-op.

Jean vividly remembered other shops and shopkeepers in Dore. "There was Marshall's shop on Church Lane practically opposite the church. In the Hare and Hounds building there was Mrs Thorpe's grocery, Mr. Mace in the Post Office, Jack Thorpe's butchers shop and on the corner Moseley's. I don't know what he sold really but they made bread and tea-cakes. I used to be frightened to death because the floor moved and as you walked across you would think we shall be in the cellar in a minute!"

In addition Jean remembered Bill Sortell, the cobbler who had one of the lock-up shops where the Deli now stands. She also described Nunnington's

greengrocery, Lottie Green's haberdashery and Margaret and Roy Wilkins' ladies and gent's hairdressers which were on Townhead Road.

The one shop with which Jean herself is remembered is Green's Hardware, which stood on Causeway Head Road next to the bank. She joined her husband Don in 1964 and was the friendly face behind the counter until she retired. During her years there the shop became a focal point for information, posters, tickets etc. for every village event and activity from scouting to dancing shows. Sadly, both Greens and Jean are no longer part of Dore village life but our fond memories of such a lovely lady will stay forever.

*Maureen Cope  
Dore Oral History Group*

**GIFTS** **ART**

**GREAT GIFT IDEAS**  
9am - 5pm

**CARDS** **OPEN 7 DAYS A WEEK**

**FRESHLY GROUND COFFEE**

**BAGS** **JEWELLERY**

**GIFTWRAP**

**seasons**  
gallery . gifts . café

290 Abbeydale Road South, Totley, S17 3LP

www.seasons-gallery.com Tel: 0114 2360022

\*\*\* \*\*

**Christmas at Millthorpe Nursery**  
'it's about plants'  
**Real Christmas Trees**  
**Fresh Hand-Crafted Wreaths**  
**Plants for Gifts**

Tues - Sat 9.00 - 4.00 Sun 10 - 4.00  
Closed Mondays except Bank Holidays  
**Tel: 0114 2584007 or 0789 9963939**  
Millthorpe Lane, Millthorpe, Nr. Holmesfield  
Millthorpe is sign posted off the B6054 at Holmesfield

\*\*\* \*\*

The **Devonshire Arms**  
**Dore**

**Christmas at the Devonshire Arms**  
**Christmas Fayre served in Restaurant**  
**No.11 1st to 31st December - Free bottle of wine for parties of 4 or more.**

**Boxing Day Dore Male Voice Choir 3pm**  
**New Years Eve Cabaret Singer 9pm**  
**Entrance by Ticket only (ask at bar)**  
**Buffet 7-9pm - all you can eat**

**Happy Christmas and many thanks for your custom - Tina and Staff**

Telephone **0114 235 1716**  
**14 High Street, Dore, Sheffield S17**

*Inspirational ideas for all occasions.*

designers and organizers of cakes, dress hire, stationery, flowers, venue and table decoration, beauty and photography.

**{heavenly creations}**  
Telephone: 07919 256645 heavenlycreation2@btinternet.com

## Dore Gilbert & Sullivan Society

We intend to put on another Winter Concert this year in the Methodist Church, Dore High Street

On Saturday 1st December 2007 at 3pm. The programme will include a variety of music from G&S through members party pieces, seasonal songs to carols for all to join in. Tickets £4 including refreshments, from Derek Habberjam on 0114 236 2299.

Keep your eyes open for this coming year's production of 'The Mikado' to be presented at the University Drama Studio, Glossop Road from Tuesday 1st April to Saturday 5th April 2008.

This is always a popular show. It is easy to follow and almost all of the songs are well known. For my money it ranks among the musical best of their operettas. The story has plenty of comic elements with the talk of heads being chopped off, a hanging, death by boiling oil (or is it melted lead?) and a suicide (Tit Willow). The principals are excellent, the orchestra is a professional one, the chorus is splendid and the atmosphere will be happy and enjoyable, so please come along to see us. It is to be Gerry Kersey's last production for us and promises to be brilliant.

Tickets are priced at £8.50 (concessions £7.50) and will be available early in the New Year. For further information just ring me.

*Derek Habberjam*

## Christmas Post

UK last posting dates:

**Standard parcels:**

Friday 14th December

**Second Class:**

Monday 17th December

**First Class:**

Thursday 20th December

---

## Christmas services at Dore parish church

### Sunday December 23rd

- 8am Holy Communion
- 10am Morning Prayer
- 4pm Candle-lit Family Carol Service (Scouts and Guides)
- 6.30pm Candle-lit Service of 9 Lessons and Carols

### Monday December 24th

- Christmas Eve
- 4pm Candle-lit Crib Service
- 6pm Candle-lit Crib Service
- 11.30pm Candle-lit Midnight Communion Service

### Christmas Day

- 8am Holy Communion
- 10am Main morning Family Communion Service

### Sunday December 30th

- 10am Family Communion Service

You are very welcome to join us for our Christmas services or at any other time.

*The Revd Michael Hunter*

*Tel: - 236 3335*

## Dore Male Voice Choir

The Choir recently returned from a very successful tour of the Rhineland. A party of 81 stayed near the city of Koblenz on the confluence of the Rhine and the Mosel rivers.

The Choir gave concerts in the spa halls of Bad Schwalbach and Bad Neuenahr and sang in the main Koblenz Lutheran church. Perhaps the highlight of the tour was singing in Cologne Cathedral. The acoustics were so tremendous that finishing the last piece with a resounding 'Amen', surely the Choir could have left the cathedral with the sound still ringing round the rafters.

In September the Choir were invited to sing at the Whitby Pavilion as part of the Summer season.

The last concert was at Banner Cross where the Choir performed in a large concert for St Lukes. The concert was given in conjunction with 'Hallmark of Harmony', Bradfield School Band and Sheffield Folk Chorale.

Our Christmas Concerts will be held in the Dore Parish Church as usual on Friday 14th and Saturday 15th December. They are always very popular occasions and booking early is advisable. The soloist is Michael Tipler, who accompanied the Choir to Germany. Tickets will be available at the end of November from any Choir Member.

The Choir's new CD will be on sale at the Concert. Don't miss it!

*David Heslop*

feast@doredeli

40 High St, Dore, Sheffield, S17 3GU

## Speciality Chilled Dishes

take them home, re-heat & simply enjoy

feast@home - lasagne has layer upon layer of soft hand-made pasta with the delicious combination of juicy tomatoes & perfectly seasoned meat, mixed together with hot, creamy bechamel sauce, beautifully topped with a golden parmesan cheese crust

just one of the many, many dishes prepared on the premises by our own gourmet chef, dishes from around the world -

full delicatessen selection including

### fresh bread from roses the bakers & fish fillets

to request an item or pre-order goods for collection please contact us on  
Tel: 0114 236 8574 or email: [feast@doredeli.co.uk](mailto:feast@doredeli.co.uk)





**300 PREMIUM  
CHRISTMAS TREES**  
*at*  
**TOTLEY HALL FARM**

**Totley Hall Lane**

Needlefast, Nordman and  
Frazer Firs at £4.50 per foot

Traditional Spruce trees  
at £3.00 per foot

Pot Grown from £20.00

**SELECT YOUR OWN**

Free net wrapping service

**OPEN MONDAY TO SATURDAYS**

**9.00 AM – 6.00 PM**

*1st December onwards*

For details contact  
Jenny or Edwin on

**TEL. 236 4761**

# Dore Grill

*Restaurant*

**Our à la carte menu**

is available for lunch and dinner Monday to Saturday

View our menus at [www.doregrill.co.uk](http://www.doregrill.co.uk)

**36 Church Lane, Dore, Sheffield**

**tel 0114 262 0035**

**Opening times**

**Lunches served Mon - Fri, noon-3pm Dinner served Mon-Sat 6-10.30pm  
Sunday Lunch noon - 3pm**

**Christmas Fayre Dinner Dance**  
**5 courses Friday and Saturday**

**£30.50**

**Paté**

Chef's homemade Paté served with finger toast\*

**Melon**

Fan of Melon served with fresh fruit

**Trout**

Smoked trout and prawns garnished with salad

**Brie**

Deep fried breadcrumb brie served with  
garlic butter

**Mushrooms**

Mushrooms cooked in herbs and garlic butter

\*\*\*\*\*

**Soup**

Chef's homemade soup of th day

\*\*\*\*\*

**Tornado Mondo**

Fillet steak served with peach in a red wine sauce

**Turkey**

Roast local turkey served with chipolata sausage  
and stuffing

**Pork**

Roast leg of pork served with apple sauce and  
stuffing

**Salmon**

Fresh poached salmon steak served with a white  
wine and prawn sauce

**Vegetarian**

Mushrooms cooked with wine, shallots, cream,  
served with rice

\*\*\*\*\*

**Vegetables**

Chef's choice of vegetables and potatoes of day

\*\*\*\*\*

**Sweets**

Choice of sweets from the trolley or  
Christmas pudding and brandy sauce

\*\*\*\*\*

Fresh coffee and mints

*Devonshire Arms*  
*No. 11 Restaurant*  
*Dore*

**Open 5 days a week**

**Wednesday to Sunday**

**Lunchtimes 12 noon - 2.30pm**

**Evenings 5.30 - 8.30pm Wed - Sat**

**Sunday Lunches 12 noon - 4.30pm**

**Fish Night alternate Fridays**

**Open Boxing Day**

**for food 12 noon - 4pm**

**New Years Eve**

**all you can eat buffet 7pm - 9pm**

**£10.00 per head**

**Friendly and helpful staff led by mike**

**Telephone 0114 235 1716**

**14 High Street, Dore, Sheffield S17**

**Monday to Friday 4 course  
Christmas Fayre Lunch £17.50**

**Soup**

Chef's homemade soup of th day

**Paté**

chicken Liver Paté served with finger toast

**Melon**

Fan of Melon served with fresh fruit

**Salmon**

Poached salmon and prawns with mayonnaise  
and a salad garnish

\*\*\*\*\*

**Turkey**

Roast local turkey served with savoury stuffing  
and chipolata sausage

**Pork**

Roast leg of pork with apple sauce and stuffing

**Steak**

6oz fillet steak garnished with tomato and  
mushroom

**Salmon**

Fresh poached salmon with white wine  
and cream sauce

**Vegetarian**

Chef's choice of vegetarian dish of the day

\*\*\*\*\*

**Vegetables and Potatoes**

Chef's choice of vegetables and potatoes of day

\*\*\*\*\*

**Sweets**

Choice of sweets from the trolley or  
Christmas pudding and brandy sauce

\*\*\*\*\*

Fresh coffee and mints

**Monday to Thursday 4 course  
Christmas Fayre Dinner £22.50**

**Brie**

Deep fried brie served with raspberry sauce  
garnished with salad

**Soup**

Chef's homemade soup of th day

**Paté**

Homemade chicken liver paté served with  
finger toast

**Melon**

Fan of honeydew melon served with fresh fruit

**Salmon**

Poached salmon steak coated in mayonnaise and  
garnished with salad

\*\*\*\*\*

**Turkey**

Roast local turkey served with chipolata sausage  
and stuffing

**Pork**

Roast leg of pork with apple sauce and stuffing

**Tornado Rossini**

Fillet steak served with a peach, finished in a  
red wine and cream sauce

**Salmon**

Fresh poached salmon steaks served with a  
white wine and prawn sauce

**Vegetarian**

Mushrooms in a white wine, cream and brandy  
sauce served with rice

\*\*\*\*\*

**Vegetables**

Chef's choice of vegetables and potatoes of day

\*\*\*\*\*

**Sweets**

Choice of sweets from the trolley or  
Christmas pudding and brandy sauce

\*\*\*\*\*

Fresh filter coffee served with mints

**£16.50**

These are sample menus

**4-course Sunday Lunch**

## Did you know.....

The government keeps saying that we are not building enough new homes to reflect the increased number of single households and the shortage faced by first time buyers. Yet Dore, and for that matter most of Sheffield, is undergoing a massive house building boom. There is hardly a road that you can drive down in Dore without weaving your way between skips and the vans of builders, glaziers, tilers, plumbers .... etc. Bungalows disappear to resurface as houses, semi-detached properties are becoming defacto terraces. Bathrooms, conservatories, garages, patios, decking - everything is being added. Then any large garden is game, with only new large houses being built, and the bigger the new house, the smaller the new garden seems to be.

There must be something fundamentally wrong to have created this mismatch. So called planning is nothing of the sort, just a half hearted attempt to zone areas and exercise controls around the margins of the onslaught by developers. We need policies which identify the needs of individual communities, allocate land and control development in line with those needs. If we don't we will destroy the very attractiveness of this area of the city, and end up living in an urban hotch potch.

Meanwhile driving on the roads has developed a culture all of it's own. Lets utilise the pavements - nobody walks nowadays. My car is bigger than yours - so I go first at a junction. Speed limits indicate a minimum - unless my radar detector indicates there are police around. Then there are alloy wheels - they look good. Go faster spoilers - they look good. Bull bars - you never know when you will meet a cow in the road. And finally personalised number plates - in the USA they are called 'vanity plates'. Now they are a useful innovation, making it much easier to remember a registration number when you need to report a vehicle to the



*Another conveniently sized bungalow bites the dust, this time on Gilleyfield Ave. police.*

Still on the roads, I used to think the yellow line markings that appear were to indicate where repairs would be carried out. Now I realise that they are actually there to warn us of pot-holes!

And what about the different colour tarmac. Reddish at the front line of traffic lights and parallel to the gutter for the cyclists we rarely see and who ignore traffic lights anyway. Then green for bus lanes which occasionally host mainly empty vehicles belching clouds of diesel smoke - hardly green!

Then it is no wonder the roads are crowded. I have just read in a wildlife trust magazine that the world population is increasing by nearly a quarter of a million a day! Such rapid population growth makes a nonsense of all the talk about our aiming to be carbon neutral in the UK. Everywhere the planet's natural resources are being plundered at an ever increasing rate and numerous species are becoming extinct. The WWF has shown that if

everyone around the world consumed natural resources and produced CO2 at the same rate we do in the UK today, we would actually need three planets to support us. Unless we tackle this human population growth we might as well not bother with other initiatives. Yet how often do we see this fact mentioned in the press or by politicians? Maybe Homo Sapiens deserve to become extinct.

*Doremouse*

## Wind turbine opposition

Proposals for a second 15m wind turbine in the green belt at Little Lydgate Farm, in Holmesfield, should be significantly altered or abandoned, say countryside watchdog Friends of the Peak District.

The campaigners say the potential benefit of generating electricity are not outweighed by the cumulative effect of these turbines.

A decision will be taken by North East Derbyshire District Council.

\*\*\*\*\*

## Bradway Pet Shop

*A Santa's Grotto for Pets*

**Advent Calendars, Christmas Stockings,  
Christmas Crackers, Huge Range of Christmas  
Toys, Flashing Collars & Tags, Hi-Vis Vests,  
Glow in the Dark Toys, Dog Coats & Jumpers**

*Burns • Royal Canin • Bertie's  
Wafcol • Nutro Choice  
James WellBeloved  
Nature's Harvest • Nature's Menu*

Open Mon-Friday 9.30am-6pm  
Saturday 9.30am - 5pm

**(0114) 236 9855**  
**180 Bradway Road, Bradway,  
Sheffield S17 4QX**

*We accept all major credit & debit cards*

\*\*\*\*\*

## little mischiefs

Cashmere, Alpaca, Silk & Cotton  
Limited editions that won't be forgotten  
Pirates, Fairies, Cottages & Castles  
Personalised gifts & Christmas parcels  
Take a trip to littlemischiefs of Dore  
For magical, memorable gifts & more

[www.littlemischiefs.co.uk](http://www.littlemischiefs.co.uk)

**0114 262 1020**  
**10 Causeway Head Road, Dore**

the lavender rooms

*A professional beauty therapy centre  
offering beautiful treatments for the face,  
body and soul*

**Christmas  
gift vouchers  
the perfect gift!**

- hot stone massage
- chocolate indulgence treatment
- dermalogica luxury facials
- relaxation packages
- pampering pedicures

144 Bradway Road, Sheffield S17 4QX  
**Tel:0114 235 6500**

# Little Treasures

New Floor - More Stock  
Gifts for Children

Educational, make-believe, developmental  
and just plain fun toys

Classic wooden toys, puppets, dolls,  
puzzles, books, games, fancy dress  
and much, much more

Plus an extensive range of baby gifts  
and baby wear from Kaloo

**Telephone: 0114 235 1411**

Find us at the top of Twentywell Lane

## Vivid Hair Salon


Tel: 2366208

We would like to wish customers old and  
new a Merry Xmas & a Happy New Year

*All aspects of hairdressing to suit all ages!*

Sunbed • Spray Tanning • Gift ideas for Xmas.

**30 High Street Dore, S17 3GU**

ashton morton slack  presents

Whirlow Hall Farm  
**Christmas  
Fayre  
2007**  
Sunday 25th  
November  
10am - 3pm

Come  
and meet  
Santa

Craft Stalls  
Farmers Market  
Live Music  
Christmas Trees  
And much more!

**FREE  
Car parking**

Whirlow Hall Farm Trust

Whirlow Lane  
Sheffield S11 9QF

Tel: 0114 235 2678

carlas@whirlowhallfarm.co.uk

www.whirlowhallfarm.co.uk

Adult £2.00

Children £1.00

Whirlow Hall Farm Trust

Established in 1979

An experience they'll never forget!



# MAKINSONS

302 TWENTYWELL LANE, BRADWAY. TEL: 0114 236 9907

## NEEDLE HOLDING XMAS TREES

We are one of the only suppliers  
in Yorkshire to sell

**PREMIUM GRADE 'A' TREES  
DELIVERED FREE**

Stockists of Krinner Tree Stands

imported from Germany.

Foot pedal operation, takes  
only 10 seconds to set up your tree



**We take all major credit cards**

## Planning matters

It has thankfully been a much quieter time during the last few months, with far fewer planning applications in the pipeline. Since the last edition you will be pleased to hear that the appeal against the Council's decision to refuse consent on an application on 'Farfield', Townhead Road, has been turned down. The application was for two three storey houses fronting onto Blackamoor Road and a further larger house behind, overlooking the Green Belt. The Society had made representations supporting the Council's.

The Inspector considered that the large buildings were out of scale with those surrounding and stated that two houses fronting Blackamoor Road should be no higher than the adjoining properties. In addition there should be no houses on the back land, a good result as the third house would severely affect the Green Belt.

As is well known by now, Persimmon, the intended developers of the King Egbert site on Furniss Avenue, have lodged an appeal against the Council's

decision to refuse the application for over a hundred houses on the site. We are pleased to say that it is going to be an appeal heard at a Public Inquiry. That means that anyone can go to the Inquiry, and a big turnout would be beneficial in indicating the concern of the residents of Dore. The date of the Inquiry is not yet known. Dore Village Society has been assisted by solicitors during the application process and is proposing to be professionally represented, to state the Society's case at the Inquiry.

It is now over two years since the Society produced the Village Design Statement. The document has still not been adopted by the Council. However it is still a useful planning tool and gives guidance as to how the village should be developed and preserved. It had fulsome support during the consultation process and is helpful for anyone wishing to develop or alter properties in the village. If you are contemplating building and wish to see the document copies are available in the DVS Room at the Old School.

*David Heslop*

## Objections to Council's plans for Dore

The Dore Village Society has objected to the plans for Dore contained in the submitted Core Strategy for the Sheffield Development Framework.

On the face of it, the City Council in its proposals, seeks to safeguard and enhance the residential areas of South West Sheffield. However some general City-wide policies would undermine this aim by promoting the continued sporadic housing infill that feeds the acknowledged overheating of the housing development market in South West Sheffield.

This unplanned development market encourages the cramming of houses into back gardens which increases average housing densities and leads to an unacceptable loss of character, increases in local traffic and the overloading of local social infrastructure such as schools and doctors surgeries.

The Village has absorbed a great deal of large and small scale infill over the past forty years but the DVS is aware from its consultation on the Dore Village Design Statement that there is increasing concern from residents that the relatively low density and attractive character of the village is under threat if this process continues.

The DVS recognises that a number of sites already have planning approval but is proposing a change to Policy SWW1 that would restrict any new housing development to only those sites agreed under detailed City Policy allocations that could be carefully controlled for their character and density.

*David Crosby  
Dore Village Society*

Extra copies of Dore to Door, price 20p each, are available at the newsagents on Causeway Head Road and Totley Library.

## SELLING YOUR HOUSE?

Save money by obtaining your Home Information Pack<sup>1</sup> at the lowest possible cost?

**HIPS**

- Avoid paying high estate agent fees
- Deal direct with your local Home Inspector
- Fully insured, Government compliant Home Information Packs start from £249 plus VAT
- Home Condition Reports or Energy Performance Certificates can also be supplied as individual items if preferred.

<sup>1</sup> Only 3 bed-roomed properties or above currently require a Home Information Pack

Alan Disney Home Inspections  
Call **0114 262 1961** or **07919 118360**

For further information see:  
**www.disneys.org.uk** or  
email: **info@disneys.org.uk**

Painting - Wallpapering - Tiling - Flat Packs & many more

## DIY JOBS NEED COMPLETING BEFORE CHRISTMAS ? NO TIME OR TOOLS FOR DIY?



**Exclusively for the Dore & Totley area  
high quality home handyman, house  
maintenance & decorating services.**

- ✓ LOCAL, RELIABLE & TRUSTWORTHY
- ✓ NO JOB TOO BIG OR SMALL
- ✓ FREE WRITTEN ESTIMATES
- ✓ COMPETITIVE PRICES
- ✓ NO CALL-OUT CHARGES
- ✓ NEW OR UNFINISHED PROJECTS
- ✓ FULLY INSURED & GUARANTEED

**Tick all those DIY jobs off your list!**

**Call Paul Wharton on**

**Tel.: 0114 236 2556**

**Mob.: 0797 403 1134**

**E-mail: paul@dorehandyman.co.uk**

**Website: www.dorehandyman.co.uk**

Gutters cleaned/replaced – Simple Plumbing & Electrics

Laying Laminate or Wooden Floors - Hanging curtain, picture and dado rails

External cleaning high-pressure jetting - Audio Visual Connections - Shelving

ELLIS



INTERIORS

Your local showroom  
for furniture, fabrics,  
soft furnishings,  
re-upholstery, lighting,  
wallcoverings and  
giftware, including

**MULBERRY**

**MANUEL CANOVAS**

and a new range of

**ANTICA MURRINA**

jewellery.

FROM TUESDAY  
6 NOVEMBER  
CHRISTMAS  
LATE NIGHT  
OPENING  
UNTIL 8PM

We wish all  
our customers  
a very happy  
Christmas and  
New Year.

**Ellis Interiors Ltd**

289a Abbeydale Road South

Sheffield S17 3LB

Tel. 0114 262 0476 Fax. 0114 235 6100

email. jacqui@ellis-interiors.co.uk

## Thirty Years On

On June 14th 1977 a group of volunteers started a venture in Dore for elderly housebound residents that was to prove very successful and is still going strong today. They decided to start a lunch club and because they wanted it to be available to anyone in the village they called it Dore Open Doors Lunch Club.

For thirty years the organisation of this lunch club has been managed by Betty Young and Bessie Colley who have held together a willing team of ladies who have welcomed, cooked and washed-up. In addition there was an army of volunteer drivers who collected the elderly from their homes and brought them to Dore Old School where the lunch club took place. Today the collection is undertaken by Transport 17 and the cooking is done by willing men as well as women.

Over the years Dore Open Doors Lunch Club has welcomed hundreds of members who have benefited from a home cooked meal served in congenial surroundings and shared with familiar company. There has always been that personal touch with birthdays remembered and Christmas celebrated as well as a genuine interest in other people. The Tuesday gatherings are looked forward to by members and

*The drains in Dore cannot cope - are we surprised?*



*"Best place for it?"*

enjoyed by everyone including the cooks.

Now the time has arrived when Betty and Bessie are happy to hand over their organisation to others and come along as guests rather than workers. They also want to acknowledge the fact that many of their volunteer team have been with them for a long while and thank them for their loyalty.

Throughout the thirty years Betty and Bessie have freely given their own time and effort to maintain a very worthwhile venture which has offered company and pleasure to so many elderly housebound

Dore residents. We applaud their generous service to our community and wish them both a deserved and relaxing retirement.

Dore Open Doors Lunch Club continues to thrive but needs more volunteers. If you can spare an hour or two on Tuesdays to help please contact us.

**Maureen Cope Tel: 235 0392  
or Karin Ould Tel: 236 9606**

## Support Group

My name is Sally Spearing and I run the NCT (National Childbirth Trust) local Coffee Group. This group has been around for many years, but it is often not known about as we meet in each others homes.

The aim of the group is to offer support for parents with babies and young children in an informal setting. Such groups have been especially valuable for families moving into the area, and for those who have worked full time and have not been actively involved in the community.

We meet on Thursdays 10am - 12noon in each others homes throughout the whole year (no breaks for school holidays). All bumps, babies and pre-schoolers welcome. For more information contact me on 236 2604 or [sally@spearings.me.uk](mailto:sally@spearings.me.uk)



# Totley Hall Farm's CHRISTMAS LIVE NATIVITY PLAYS



Once again, we have recreated the Bethlehem stable scene in our barn complete with live animals, Sunbeam our cow, Dorset ewes and lambs and Spirit our donkey, giving it a flavour of real authenticity and atmosphere.

The children who came last year enjoyed dressing up as Mary, Joseph, the angels or wise men and playing out their role as we narrated the wonderful nativity story. The parents filmed or photographed the performance in between joining in the carol singing. The after performance refreshments proved very popular, particularly the mulled wine for the adults! Santa's house was the main attraction for the children as they collected their presents from him, although the free donkey rides were a close second!

### Why not give the whole family a Christmas treat this year

by coming to one of our plays. The whole event lasts approximately 1 1/2 - 2 hours, the narrated play taking about 30 minutes at the beginning. Do visit our web site at [www.totleychristmasfestivals.co.uk](http://www.totleychristmasfestivals.co.uk) for pictures of last years performances and a list of special options for groups and clubs that start at £4 per person.

Below is a schedule of this years performances and we would love you to join us for this unique and special start to Christmas.

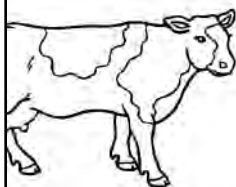
### 2007 ticket prices (no price increase)

Adults @ £8.75 - includes tea, coffee or mulled wine and mince pies.

Children aged 3-16 @ £8.75, Children 2 and under @ £4.50 - includes a present, drinks and Christmas biscuit.

Sat 8th Dec		1.30	4.30	
Fri 14th Dec			4.30	6.30
Sat 15th Dec	10.30	1.30	4.30	6.30
Mon 17th Dec			4.30	6.30

Tues 18th Dec			4.30	6.30
Wed 19th Dec			4.30	6.30
Thur 20th Dec			4.30	6.30
Fri 21st Dec	10.30	1.30	4.30	6.30
Sat 22nd Dec	10.30	1.30	4.30	6.30
Mon 24th Dec	10.30	1.30	4.30	6.30



**For further information, or to book your places using our credit card hotline, please call Jenny on 0114 236 4761**



Home produced Free Range **GEESE**  
& Christmas poultry to order for

**CHRISTMAS & NEW YEAR**  
Firs Farm, Ringinglow Road

Sheffield S11 7TD

Tel: Angela & Jim Battye on 2301169

**HOME GROWN POTATOES**

# TEMPTATIONS

Established Since 1908

## Toys, Puzzles, Games and Jigsaw Specialists

Over 2,000 Jigsaws in stock - we also  
stock Lego, Playmobil, Siku and Bruder  
Toys

Find us at

**Matlock Street, Bakewell,  
Derbyshire DE45 1EE**

**Tel: 01629 812065**

MAIL ORDER SERVICE AVAILABLE



commercial



Are your personal  
estate matters  
in order?

Our specialists provide a  
complete legal service

**hlw provide you with specialist  
advice and assistance on:**

- Inheritance Tax planning
- Trusts • Wills
- Estate administration
- Enduring and Lasting Powers of Attorney
- Court of Protection
- Asset preservation

for further information contact:

**Emilda Eaton**; emildae@hlwlaw.co.uk

telephone: 0114 276 5555 website: hlwlaw.co.uk

hlw commercial lawyers, Commercial House,  
Commercial Street, Sheffield S1 2AT

# Whirlow Hall Farm Christmas Fayre 2007

Buy Christmas Cards, Hampers, Turkeys and  
Christmas Trees from Whirlow Hall Farm Trust  
and support your local children's charity.



**2007  
Christmas Cards**  
Competitive prices  
Professional overprinting available



**Christmas Trees**  
Traditional or non-needle drop trees  
4ft-10ft from £20-£40  
£5.00 delivery within 5 miles



**Christmas Turkeys**  
Barn reared oven ready turkeys  
White £2.72 per lb  
Bronze £2.95 per lb  
Sizes 12 - 20lb available

## Eating Your Way To Health



Would you like to feel full of energy?

Do you have health symptoms which are troubling you?

Would you like help managing your weight?

Are you at a special stage in your life when you need to  
be at the peak of health? (Working very long hours -  
Menopausal - Trying for a baby)

If you would like the chance to have a one to one  
nutrition consultation with a local, fully qualified,  
nutritional therapist (& tutor at the institute of Optimum  
Nutrition, London) then please contact:

**Ann-Marie Fletcher**

BSc(Hons) Chem, PGCE, FdSc. DiplON, MBANT.

Tel 2353505 or visit [www.sheffield-nutrition.co.uk](http://www.sheffield-nutrition.co.uk) for  
further details



**We also repair and supply and install  
pc's, laptops and servers**

## abc Data Recovery Ltd

Microsoft SBS 2003 tower and rack-mounted systems stocked

Linux file and firewall servers.

Recovery, repairs and data migration services.

**email: andy@abc-pc.co.uk**

or

**Telephone: 249 1073**



## Flight of a thousand eyes

Flight of a Thousand Eyes is the name given to a record-breaking flight in April-May 2007 by Sheffield pilot Sheila Dyson and two fellow pilots in a Cessna 182 from Netherthorpe Airfield, near Worksop, to Sydney, Australia. Creating a new British National Record for a flight from Netherthorpe to Cannes in south of France on 2 April was just the first step. There followed a 12,500 mile journey through 17 different countries in Europe, the Middle East, the Indian sub-continent, Asia and, finally, Australia where they landed at Bankstown Airport, Sydney on 28 May.

But Flight of a Thousand Eyes wasn't just about adventure, it was also about raising awareness and funds for the charity ORBIS who deliver ophthalmic training to medical personnel in developing countries by means of the world's only flying eye hospital, a converted DC-10 airliner. Sheila and her fellow pilots decided to raise enough funds to pay for 1,000 cataract operations at £20 each and to help the project along, Sheila has written a booklet about the journey. Fully sponsored, all proceeds go to the ORBIS. Copies of the booklet, Flight of a Thousand Eyes, are available from Sheila, Tel 0114-264 2773. Price £10.

Sheila is a retired teacher who used to teach at the Norton site of the Sheffield college (Leisure Studies) and is now a home tutor for English and Maths. She belonged to Abbeydale Writers for seven years, and was a member of Totley Athletic Club for 5 years. ORBIS can be contacted at [www.ORBIS.org](http://www.ORBIS.org)



*Official welcome by Civil Aviation Affairs, 12 April, Bahrain. From the left: John Greasley, Sheik Yousif Mahommed Mahmoud, Sheila Dyson, Neville Tate, Yvonne Trueman.*

imports were taking over and Mr. Bradshaw of Chapel Walk Veg & Fruit shop was describing Spanish Granny Smiths as "looking nice but tasting of turnips!"

Over the last 30 years two thirds of our orchards had been grubbed up, and there was pressure on English farmers to send their produce as early as possible to market often before being fully ripe. The orchards, both commercial and private, had other uses; as chicken runs, for pigs and also as refuge for wildlife.

More than 6,000 varieties of eating cooking and cider apples have been grown here, going back to Roman times. So it was this history of diversity and local trees that Common Ground hoped to revive; Norfolk Beefing, Gloucester Cross, Keswick Codling, Old Fred, Lady Henniker, Worcester Pearmain and of course Cox's Orange Pippin. This was first grown in 1825 on what is now Runway 2 at Heathrow Airport.

This year, English growers are celebrating a bumper crop, 10% up on last year because of the warm spring and summer downpours. In fact growers were worried that apples would grow too large,

as the growth was so fast before July. Evidently people like to bite into an apple of 65-70mm and no larger! Then the cool cloudy weather slowed growth and hail affected the Kentish Braeburn crop. Growers hope to boost production of Braeburn to 20,000 tonnes within 5 years.

So things are vastly different from 1990. Local and seasonal are the buzz words. English Cox's are the biggest sellers with 45,000 tonnes due to go on sale soon. There was a saying that "Those in their 40s mostly bought Cox's and those older would buy nothing else!" But abroad this is an unpredictable apple with trees sometimes high yielding, but sometimes producing nothing. Our climate does have advantages. And have you noticed that there's nothing to match our Bramley cookers in mainland Europe?

Cider sales are also flourishing with a recent section of CAMRA (Campaign for Real Ale) being devoted to promotions. They only promote the fermented juice of actual pears or apples out of a tub or box. There have been products sold made from concentrates with chemical flavourings added (sometimes sulphur) and the concentrates are imported from abroad. Sheffield had its own Beer and Cider Festival this year in late September when 24 real ciders were on sale.

In the City centre the Dove and Rainbow serves real cider as does the Wellington at Shalesmoor. Real cider has to have at least 75% apple and can have up to 25% fermented pear juice (useful for the natural tannin). Perry is the reverse, with at least 75% pear and up to 25% apple. A third type "Pider" was invented in the late 80s with a 50/50 balance.

Look out next year for Apple Day events. You can bring apples from mystery trees to be identified information on how to set up a community orchard (How about that DVS?) and an Apple Doctor on hand to discuss diseases. There are cookery demos, pruning and grafting exhibitions, apple games and customs. [www.commonground.org.uk](http://www.commonground.org.uk). But I must finish writing so I can make the Christmas mincemeat with the windfall apples a friend has just given me!

*Gillian Farnsworth*

## Apple Day

I'm writing this on Apple Day - October 21st. In 1990 a group called Common Ground felt that a special day of events would bring the English apple back into favour. And from one event at Covent Garden it has grown to 50 events around the country. At that time the 'polystyrene'

## MERRY FITNESS! (and a Healthy New Year)

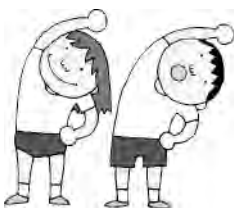
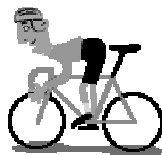
Wilda Goyetche & Steve Williams

Wildago Limited, Dore, Sheffield

Phone 0114 262 0638 or 0774 920 6133

Email [wildago@googlemail.com](mailto:wildago@googlemail.com)

[www.wildago.com](http://www.wildago.com)



- **Personal training** for all levels of fitness
- **Mountain/road bike** instruction, tours and emergency maintenance
- Safe, effective, and affordable coaching
- Gift certificates available
- Ask about **Circuit Training Classes** - £4 per person

Wilda is a **Personal Trainer**, an Advanced Instructor on the *Register of Exercise Professionals*, and is qualified to work with **GP Referred Patients**. Steve is a certified **Mountain Bike Instructor**, Fitness Instructor, and a member of the *British Cycle Coaches Association*. References available.



# Your local cartridge



Free friendly help & a  
Thousands of product  
faxes & copiers,  
home & business users we

a i c h a r d  
o p t i m u m - - c a r t  
1 High Trees, Dore




● ● ●

## Valerie of Dore Florists

Tel: 0114 236 2168

### WOW it's Christmas

Let us make **Christmas Special for you**  
with beautiful flowers designed by our  
professional team of florists

Treat them to something extra special by  
sending **chocolates, wine, bears or  
champagne . . . . or treat yourself**

Choose from delights such as  
**The Classic Yuletide Basket** or  
**A Festive Extravagance Handtied**

Festive Hampers also available to  
send to a friend through Interflora



[www.valerieofdore.co.uk](http://www.valerieofdore.co.uk)

# Interflora®

INDEPENDENT  
**ANTIQU & FINE ART  
AUCTIONEER & VALUER**

- Make more when selling your antiques.
- Save on your professional insurance and probate valuations.
- Single items to complete contents undertaken.



**Vivienne Milburn** FRICS  
INDEPENDENT ANTIQUES VALUER & AUCTIONEER

Main St, Great Longstone, Bakewell, Derbyshire, DE45 1TA  
Tel: 01629 640210 Mobile: 07951 774120  
Web: [www.vivienmilburn.co.uk](http://www.vivienmilburn.co.uk)

### THE TASTY PLAICE

*Compliments of the Season to all our customers from Mike, Sandra and Maureen*

### DORE OPTICIANS

*Merry Christmas and a Happy New Year from Peter and Lynne*

*Leatherhill Farm Meats*

Seasons Greetings from Anthony and the team

### DORE DENTAL CARE

Seasons Greetings to all our Patients from Dore Dental Care - Tel 2368402

### Dore Service Station

*Best Wishes for Christmas and the New Year*

### DORE VILLAGE SOCIETY

Seasons Greetings to all our Members

Merry Christmas and a Happy New Year from all the staff of

## Twinkle & toes

### JOHN CLARK DAIRYMAN

*John and Sandra wish all their customers a Merry Christmas and a Happy New Year*

## THRESHER WIN SHOP

Merry Christmas to all our Customers from Paul and Staff

## Friends Reunited

On Saturday 20th October the Dore Oral History group held a second reunion for past pupils of Dore Old School. It was well attended by many former classmates who came from all over the country. They all enjoyed the chance to catch up with the past and remember shared experiences from their school days. By the sound of the constant laughter in the room most of the memories were amusing ones!

The Oral History group had mounted a new display of photographs and stories about the Shops and Shopkeepers, Pubs and Publicans in Dore Village from 1904 to 1995. This was of great interest and provided a focus for all visitors as well as an opportunity to share yet more reminiscences of childhood. We would like to thank all those who came along to support this event and helped to make the day so worthwhile.

The Oral History group's project which is now known as 'Dore Voices' aims not only to collect but also to give back to the village the life stories that have been entrusted to us. If you would like your voice to be added to our collection either through recorded interview or written memories please get in touch.

*Maureen Cope & Co.  
Dore Oral History group*

## Bonfire at Whinfell

The money which we got from the Heritage Lottery fund has enabled us to have a great deal of work done on the trees at Whinfell Quarry Garden throughout September. The dead, damaged, diseased and dangerous trees have now been felled and pruned in preparation for their replacements. However, although much wood has been removed from the site there is still much tidying up to do.

Saturday November 24th is a working



*At back: Graham Thorpe, Gerald Hepworth, Howard Jackson, Peter Belk, John Horn  
Middle row: Anne Thorpe, Heather Hamlet, Christine Wragg, Sonia Craddock,  
Margot Trevethick, Jane Denniff. Front row: John Booth, Trevor Biggin, John Taylor*

day in the Garden when we want as many people as possible to come and help with the tidy up. We are going to have an old fashioned bonfire to get rid of this wood. About 3pm in the afternoon we will finish with baked potatoes, parkin, toffee and hot chocolate and other traditional Yorkshire bonfire food. This will be a celebration and also the opportunity to raise a few more funds. If anyone has a favourite recipe or is willing to contribute food let me know.

Please come and help whenever you can. Meet at the entrance on Ecclesall Road south from 9.30 onwards or just come and bring the children to the bonfire at the end of the day.

Kathleen Cox, Chair  
Friends of Whinfell Quarry Garden  
Kathleen.cox@bigfoot.com  
or phone 235 0534

## Journey to Bethlehem

For the 5th year in succession, Roman centurions will be waiting at Totley Rise Methodist Church on Grove Road to lead visitors on a Journey to Bethlehem. In 30 minute tours, groups will be guided through scenes leading up to the very first Christmas 2000 years ago. The tour ends at the stable where a real baby Jesus is cared for by Mary and Joseph.

The tours start frequently between 7pm & 9pm Friday, 7th December and 4.30pm & 7.30pm on Saturday, 8th and Sunday, 9th. To book call Gaynor 0114 236 8726. It is essential to book in advance as the event is very popular. The tour is free and refreshments are served. Come warmly dressed as the sheep are outdoors!

## PARK VETERINARY HOSPITAL

A member of  
THE BRITISH VETERINARY HOSPITALS  
ASSOCIATION

- OPEN 8.00AM - 7.00PM MON-FRI,  
8.00AM-4.00PM SAT
- APPOINTMENT SYSTEM
- 24 HOUR EMERGENCY SERVICE AND  
PATIENT CARE
- EXTENSIVE SURGICAL, MEDICAL, CARDIOLOGY  
AND DIAGNOSTIC IMAGING FACILITIES
- THREE SEPARATE WARD SYSTEMS WITH  
INTENSIVE CARE AND ISOLATION FACILITIES
- IN-HOUSE LABORATORY
- EASY PARKING
- HOME VISITS
- FRIENDLY ADVICE ALWAYS AVAILABLE

FOR APPOINTMENTS OR EMERGENCIES

PLEASE RING **0114 236 3391**

24 ABBEYDALE ROAD SOUTH, SHEFFIELD S7 2QN  
(OPPOSITE MAIN CAR PARK ENTRANCE MILLHOUSES PARK)

## Millhouses Dog Training (K.C. Reg)

Classes for:

Puppies

General

Training

Agility

Behaviour Clinics

One-to-one classes



Established over 20 years

Tel - Mrs. Katie Patmore

**0114 296 2271**

(www.millhousesdogtraining.co.uk)

## I'm Your Man

Furniture looking tired?  
Need a French Polisher to sort out  
that party stain or scratch?

**Then I'm Your Man**

- Cabinet Making - apprentice served  
City & Guilds FTC
- French Polishing
- Antique Furniture Restoration
- Traditional Furniture Repaired-Restored

Thinking about a few change  
around the house

**Then I'm Your Man**

- Domestic Joinery
- Built-in Wardrobes
- Bespoke Kitchen Design & Manufacture
- Bathroom Makeovers

For advice or assistance, give **Tony** a call

- Honest hourly rate
- Larger jobs by quotation

**I'm Your Man, The Old Tool Room, Unit H4,  
Sheafbank Business Park, Sheffield S2 3EN  
Tel: 0114 262 1714 Mob: 0776 8496981  
Fax: 0114 296 2384 email: tony@thf.co.uk**

## Radiance Beauty Therapy

By Paula Turner (10 years experience)

Friendly, personal service in a professional and relaxing Treatment Room or mobile to your own home

**Treatments include Facials, Manicures,  
Pedicures, Waxing, Spray tanning,  
Eye treatments etc**

10% discount off your first treatment\*

Call Paula for further information and appointments on

**0114 236 1704 or 07971 415120**

Rushley Drive, Dore



## How many times have you said - I wish I could...

Hypnosis for weight loss, stress, pain, smoking, sleep, fear/phobia and more...

Call 235 1985 (Totley)



Paul Peace

Sheffield  
Hypnosis

[www.sheffieldhypnosis.co.uk](http://www.sheffieldhypnosis.co.uk)

GHsc

VALIDATED PRACTITIONER  
General Hypnotherapy Standards Council



Karen Bartle

## Patricia Barber

53 Wollaton Road, Bradway  
Telephone 0114 236 6247

Gents Hairdresser

### Don Allot

has now moved to the  
above address



Thursday, Friday & Saturday from 9.00am  
Full Barber Service available

Walk in service and appointments available

## Andrew Haigh Decorator

*Professional interior, exterior, decorating and wallpaper hanging. Also, coving application, rag rolling, French polishing and many, many more decorating tasks undertaken.*

*Clean tidy and completely professional*

*For a free competitive quote call now on*  
**(0114) 272 6064 or 0797 452 9901**



UPVC windows, doors and conservatories

- High technology cleaning and restoration
- Free quote and presentation

Call **0114 235 3200**

**White Knight**  
UPVC Renovation

## Horizon Electrical

*Faults, Rewires, Sockets, Lights,  
Cooker Points, Electrical Showers,  
Phone Points, Security Lights*

No job too small

*Fully qualified with friendly advice*

Ring Totley 236 4364 or  
mobile 0776 5036849

## Brian Hill & Son

Builders and Joiners

Established 1970

Replacement Doors and Windows  
uPVC and Wood

Single and Double Glazing  
Roofing and Pointing

Fitted Kitchens and Bathrooms  
General Home Improvements

Tel: (01246) 410601 Mobile: 07860 210156

## Christmas Sale

The Dore Art Group Exhibition in April has become an established event in the Dore Village Calendar. This year in addition we are trying out a new idea suggested by one of our members - to have a pre-Christmas Sale of original cards, notelets, prints etc. We are combining this with an Open Door afternoon so you can come and see what we get up to. We might even manage a cup of tea and buns! All are welcome at The Old School on Thursday Nov 29th from 2-4.30pm. Entry free

*Dore Art Group*

## Dash through the snow

Join in St Luke's special Christmas sponsored bike ride or fun run, and raise money for the Hospice this Christmas. Make the day even more interesting by showing up in festive fancy dress, there will be a prize for the best dressed! To enter is only £10 and you will receive free reindeer antlers along with your information pack. Starting and finishing at St Luke's, there will be warm mince pies and refreshments as well as a special visit from Father Christmas and some of his reindeers!

Dasher's Dash and Rudolph's Ride festive bike ride, or fun run in fancy dress, will take place on Sunday 9th December. All ages welcome. There are two routes: 2.6 mile fun run/ 4.9 mile bike ride

To enter please contact Aimee Ward on (0114) 235 7554

## Baslow Pottery

After more than 10 years of making and selling pots locally, Ray and Doreen Gridley have recently moved from Prospect Road to Baslow. What was known as Overdale Pottery has now become Baslow Pottery, based in Ivy House, a 17th century farmhouse (formerly 'Ivy House International Fashions'). Do call in on your way to Chatsworth Park or Bakewell. You'll find them on the main road, next to the Wheatsheaf pub. They will be glad to welcome you and maybe help with your Christmas shopping!

## Five Trees Estate

Sunday 14th October dawned wet and dark and our planned bulb planting event was in danger of being cancelled but in true Dunkirk spirit we went ahead and by 10.30 the weather had dried out and lightened slightly.

The first turf was lifted by our horticultural experts Burt and Janette Crooks and after presentations, 50 people helped to plant 2000 daffodils and 1000 crocuses on the grass verge bordering our estate with the children planting their own bowl of crocuses and labelling their efforts so that they know where their bulbs are when they flower in the Spring.

It took us one hour and a half to complete the task and everyone thoroughly enjoyed the co-operative venture and at 12noon we enjoyed hot bacon sandwiches and coffee and all agreed that it had drawn the estate together socially as well as practically.

We would recommend a similar venture to other groups in Dore.

*Elizabeth Dawes*

## Open Door Lunch Club

After 30 years of running the club, Betty Young and Bessie Colley have retired. How did it start, I asked. Betty remembered a Church Fellowship meeting. Faith should be in "deeds not words." They therefore asked at the Welfare Dept. what was needed in the area, and the answer was a lunch club for those living alone or couples needing help. A community meeting for February 1977 was called at the Old School.

Seventy came. The logistics of space and numbers, insurance and so on were made clear by the authorities as well as the fact that the volunteers must both find the premises and be self financing. The maximum of ladies and gents was to be 12. Vivienne Filleul was most helpful with her experience of a similar venture and Molly Brown suggested a wise precaution - that following every meal food samples be kept in the fridge. From that meeting 42 people "enlisted" - an eager team of cooks, hostesses and drivers (7 each week and 3 cars ) including Dot Jones who shared administration with Betty. About 3

years later Bessie replaced Dot.

The first meal was in June 1977. Members were recommended by doctors nurses hospitals or Social Services, and not always for physical reasons. We have all seen many times the wonderful benefits of weekly companionship for those perhaps bereaved or lonely. Occasionally there was a day trip. After 5 years money arrived from Mrs. Hinchcliff's legacy, and to everyone's delight, it covered coach and meal for 12 members and helpers to the Goyt Valley for the day, and another time other funds covered a canal boat trip at Whaley Bridge. Money also comes to the funds from other wellwishers (e.g. Dore Village Society) The special Christmas meal with a Ryecroft Farm turkey involved the whole team of cooks and was followed by a slide show or singers. There have also been meals at the Castle (Bradway) and a move to the Church Hall during the Old School extension.

I hardly dare ask Betty and Bess their thoughts on swapping one cramped kitchen for another, so we discussed the spacious "dining room" the male cooks recently recruited and the First Aid and basic hygiene qualifications. There has been more versatility recently in that the club has acquired its own large equipment for catering on site as well as the normal home cooking. Whichever it is, FRESH IS SPESH! Makes you look forward to old age.

For the first 20 years or so, all transport was by private cars. However, increasingly space became needed for zimmer frames and wheelchairs, so Transport 17 has been used since. Also the special role of "washer up" lightened the chores and with the new kitchen— a dishwasher. At the time of its founding, it was only the 2nd club in the Dore and Totley area. Later there were 5. Dorcas has now closed making 4, who help each other to find vacancies. However, there's the story of the lady who turned down the Methodist club as the "no sherry" club and the other story of the mystery sherry benefactor still anonymous

Other services were that of a social worker Ann Varah, and library book deliveries. Ann came for around 10 years. She not only listened to problems but often speeded up the solutions (perhaps respite care or a home visit) "The best cutter of red tape" as Bessie said. Totley library set up a system whereby books (particularly large print) were delivered once a fortnight and requests taken. So valuable was this that one lady read a dozen every fortnight! And Bill Pridmore (verger) used to adorn the tables with surplus church flowers, to add to the birthday posies. Taking my 4 year old with me initially, I was cook there for 14 years. Many scores of volunteers have given and are giving their time to this valuable group.

Betty and Bessie spoke with gratitude of these wonderful volunteers who have enriched not only the members' lives but their own. They have confidence that it will go from strength to strength under the leadership of Maureen Cope (Tel. 2350392) and Karin Ould (Tel. 2369606).

*Gillian Farnsworth*

*Professional Cleaning by*

## NEW PIN CLEAN LTD

Daily • Weekly • Fortnightly • Monthly

- Spring Clean • House Moves *Our well trained staff will clean your home*
- Full Ironing Service • One Offs *thoroughly. We offer a customised service*
- Fully Insured • Free Quotations *to suit your requirements*

**Carpet and Upholstery Cleaning Specialists**

*The Iron Shop*

Why not bring your Ironing to us? Local Collection & Delivery

# 0114 236 2943

49 Wollaton Road, Bradway, Sheffield S17 4LF



EADON LOCKWOOD & RIDDLE

# Keep your finger on the pulse

Valuing  
Surveying  
Letting  
Managing  
Auctioning



## *Helping you to move!*

Dore Office, 33 Townead Road, Dore, Sheffield S17 3GD

Telephone 0114 236 2420 Fax 0114 2351390 Email [dore@elr.co.uk](mailto:dore@elr.co.uk) Website [www.elr.co.uk](http://www.elr.co.uk)

*Download a brochure at [www.elr.co.uk](http://www.elr.co.uk)*

## Tree Preservation Orders

The Environmental Planning Team, in Sheffield Development Services, has for many years included a small group of 3 Tree Officers dedicated towards dealing with trees protection matters in Conservation Areas, Tree Preservation Orders, and Planning Conditions across the city. The EP Tree Officers are also consulted on tree and landscape issues on new potential development sites, as part of the Development Control process.

At the beginning of October 2007, the number of tree officers increased to four, with the addition of a TPO Review Officer, in a temporary 2-year post. From the earliest TPO's made in the city in 1972, to the present day, the team is responsible for over 450 Orders, and many of the sites have changed substantially since then. The Review Officer's specific task is to check and bring up to date mainly the older TPO's, some of which were made as "Area (sometimes called Blanket) TPO's". In many cases this will involve complete re-surveying of the trees, and subsequently re-issuing the TPO's.

In the Dore area, there are perhaps 10-12 TPO's that may be subject to review. However, the details of the review programme are still under development, and consequently for the present we will be unable to say exactly which TPO's will be reviewed. When we do have details, we will be notifying individual residents of our programme, and arranging visits.

You may be interested to know that we are hoping to make available a searchable database of Tree Preservation Orders on the Council's website, possibly by the end of this year. Initially, it may simply be a list of sites having TPO's, although ultimately we hope to have a searchable map database. However, the publication of detailed TPO information will only be possible once the TPO Review has been completed.

We have recently completed our second Tree Works Application Customer Satisfaction Survey. In the first, which was completed in September 2005, we had an overall satisfaction rating of 90%. In the second, we achieved a satisfaction rating of over 94%, and have identified a number of areas where improvements might be made. Several people suggested that they would like the process to be speeded up, although we are constrained by allowing 2-3 weeks for any representations or objections to be made. We would wish to thank all Dore residents who took part in the survey.

**Ray Harris**  
Environmental Planning Team  
0114 273 4198



*The beautiful Copper Beech tree on the Blue Ridge building site adjacent to Ashfurlong Lane.*

### Save that tree

Development of the Blue Ridge site on Ashfurlong Lane has created a number of problems over the application and enforcement of TPOs. What was once almost the last country lane in the village,

complete with tree lined verge, has degenerated into an ugly building site. Despite recommendations by the city ecologist that the area of trees and shrubs bounding the road be preserved, their environmental and ecological value has been comprehensively destroyed.

Now the beautiful Copper Beech on the site is also at risk. As the photograph on this page shows, flats are being built so close to it, that branches could literally poke through the windows.

It is not due to the planning decision that the current situation has arisen. The tree is shown on the approved plans to be 7.8 metres from the flats, although it has now been discovered that County Developments plotted its position incorrectly in the first place. No one checked this until the building was underway, when it was found that the tree was actually less than 5 metres from the flats. It is the unfortunate result of a lack of Council resources that led to the failure to check such things before it was too late. However, the onus on surveying the site rests with the developer. Proposals to fell the tree will be resisted, but pruning will obviously be necessary.

### Tree safety work

In the next few weeks a variety of tree safety work will be undertaken on just over 50 trees growing next to main paths, boundaries and roads in Ecclesall Woods.

All the work is needed for safety reasons. In most cases, this simply involves the removal of dead or otherwise dangerous branches over paths. However a few of the trees have more major problems and will be either be felled completely, or reduced to low standing stumps to leave habitat for wildlife such as fungi and invertebrates.

**John Gilpin**  
Woodlands Project Officer  
Parks & Countryside Service



**PHFS**  
Limited

A Bespoke Financial Planning Service for Personal & Corporate Clients. We're Local & Independent



Authorised and regulated by the Financial Services Authority

Registered Office 160 Baslow Road Torrey Sheffield S17 4DR  
63 Middlewood Road Hillsborough Sheffield S6 4GW  
14 High Street Staveley Chesterfield S43 3UX

- Investments
- Pensions
- Life Assurance
- Inheritance Tax Specialists
- Wills & Estate Planning
- Pre & Post Retirement Advice
- Wealth Management Specialists

Call us Free on  
0800 294 1909

advice@phfs-ifa.co.uk  
www.phfs-ifa.co.uk

Independent Financial Advisers



May I introduce myself . . .

Rupert Flint

formerly of Flint Electrical

I am now available to carry out a variety of small jobs both in the home and garden, including general maintenance and repairs.

Having resided locally all my life, with 23 years experience of running a business, I offer you a prompt and efficient service.

Please contact me to discuss any work either on a regular contract or one off basis.

Telephone 07837 927810

## South Sheffield Tiling

Wall & Floor Tiling Specialists

Kitchens • Bathrooms • Conservatories  
Natural Stone Fixing and Care

Ian D. Wardle

0114 235 9186 or 07782 102497

Fully Insured and Professionally Trained

## Hinchcliffe Decorators

John and Ian Hinchcliffe



Interior and Exterior Decorators  
CITY & GUILDS LONDON INSTYTUTE

Specialists in all types of Decoration  
Fully Insured

2 Oliver Road, Sheffield S7 2GN  
Tel: (Ian) 258 5166, (John) 262 0584  
Mob: 07977 956979  
www.hinchcliffedecorators.co.uk

## New Freelander TD4 from only £20,960



All weather. All terrain. All new, inside and out. The all new Freelander 2 has arrived. More intelligent. More comfortable. More powerful. More refined. There's nothing on or off-road. Experience more-call us to arrange a test drive.

### All new technology

- Full time intelligent 4WD
- Terrain Response™
- Keyless start
- Adaptive front lighting
- Touch screen navigation

### All new powertrains

- Highly responsive 2.2 litre turbo diesel TD4
- Ultra-compact, straight-six 3.2 litre petrol i6

### All new design

- Bold new look
- Command driving position
- Stadium seating

On the road price: £20,960-00	Purchase fee: £95-00	24 monthly payment of: £198.99
Less advance payment (Deposit): £5,890-00	Balance Payable (inc. Optional final purchase payment): £19,960-76	Followed by optional final purchase payment (Guaranteed minimum future value): £11,965-00
Amount of credit: £1,670.76	Total amount payable: £22,850-76	
Interest: £125-00		
Facility fee: £125-00		

Apr 6.9%

**Gordon Lamb Land Rover**  
Discovery Way, Whittington Moor, Chesterfield S41 9EG  
Tel: (0845) 373 5488  
www.gordonlamb.landrover.co.uk

TRIED. TESTED. APPROVED



0845 calls are charged at local rate. Calls may be recorded for training purposes. NB: If you wish to take a test drive, please bring your driving licence. Finance is available subject to status on eligible new vehicles registered between 01/07/07 and 31/10/07 in the UK to persons aged 18 or over. First monthly payment due after deferred payment period. Guarantees and Indemnities may be required. Models subject to availability. All prices include £38 first registration fee. Model shots shown are for illustration purposes only. Information correct at time of going to press. Refer to dealer for exact specification. This advert supersedes any previously advertised offers.



## LEARN TO DRIVE WITH

**John Barker – DipM DSA ADI**  
Your local BSM instructor  
**Telephone: 0114 236 8855**  
Email: john@johnbarkermotoring.com  
Web: www.johnbarkermotoring.com  
**BSM – THE BEST START IN MOTORING**

## TRISTAN SWAIN

Landscaping & Maintenance

Established 20 years

Fully insured

GARDEN RESTORATION & MAINTENANCE

Unit C1  
Sheaf Bank Business Park  
Prospect Road  
Heeley  
Sheffield S2 3EN

Tel/Fax: 0114 255 4689  
Mobile: 07831 802539



## Nigel Watson

carpenter and joiner

Doors, locks, floors, architraves,  
skirting boards, stairs, stud walling,  
boxing off etc.

No job too small

For a reliable, quality service

**Tel: 0114 236 4778**  
**Mobile: 07971 528149**



## Curtain & Roman Blind

design and making service

Personal service from a friendly family-run  
business established over 12 years  
Wide range of fabrics: both contemporary and  
traditional. Large portfolio of completed jobs to view  
Track and pole supply and fitting service

For FREE home visit & advice, call Carron at C by C  
**0114 236 9585 Mobile 07963 630233**

## Totley history update

Once again local historian Brian Edwards will be exploring the past in Totley.

Do you know what was on your house and garden site in 1549? What was the Earl of Shrewsbury, the husband of that notorious Bess of Hardwick, doing in Totley - that is when he could drag himself from being the jailer of Mary Queen of Scots. If you live on Marstone Crescent you may be treading on what was Bare Lambs Close and if you had dwelt on Laverdene in Victorian times you might have been asked to throw cold water over an alligator. Come to think of it you might have seen elephants on Back Lane.

There again you might have run a successful 15th century corn milling enterprise near the Crown Inn, trod on fabric at the Walk Mill or even peed on cow hides! If you had enough cash you might have bought a grandfather clock made in Totley in the 1700s; you might have made that money by working one of the earliest paper mills in England over three hundred years ago.

And just why did novelist Angela Thirkell, a relative of Rudyard Kipling, spend her honeymoon here? What fun was it for a famous scientist to make some 10,000 blots and what fun was it to share two small bedrooms with 39 filthy and sweaty men. What is a threshold and who would drop eaves?

Yes it all happened in Totley, and Brian will bare all (not the full monty!) during an illustrated lecture on Tuesday 20th November at All Saint's School in Hillfoot Road. The event will be one of several organised to celebrate the 130th anniversary of the school. The talk will be followed by any questions you may have on Totley's past. You might have noticed something strange in your deeds or found a roman coin (one chap did) or you could have an unidentified photograph, or even a Hill tall case clock.

If you have a particularly difficult query, it would be helpful to ring Brian beforehand on 01629 640752 so that he can do a little research and answer it on the evening.

The lecture will start at 7pm and should finish around 9pm and there will be coffee or tea and biscuits - all for £3 for adults and £1 for children. Tickets from All Saint's School, telephone 236 1934.



*"Under no circumstances whatsoever shall any preacher be allowed to occupy the pulpit wearing trousers"*

## The mind boggles!

Whilst preparing Totley All Saints School historical records for deposit with Sheffield Archives, I came across a curious handbill which seems to have no connection with the school.

The ZELOS appear to be a performing

duo possibly in the late 19th or early 20th century and who the heck were these Continental Novelty Experts who offered Classical Gymnastic Exploits and Novel Equilibristic Feats. And what on earth are 'Exciting teeth performances with heavy weights etc ? Did the duo, Marie and Charles, go around offering their services to schools or were they performing at Tottleys' Victoria Pleasure Grounds, perhaps lodging in the long-gone Kings Arms Hotel which (by coincidence) is now a dentist on Baslow Road. Don't let me put you off that filling folks!

While mentioning performances, did you know that the 1820 Trust Deeds of the Bethel Chapel in Cambridge Street, Sheffield, stated "Under no circumstances whatsoever shall any preacher be allowed to occupy the pulpit wearing trousers" (cue illustration!).

*Brian Edwards*

## Christmas at St. John's

*December 2nd.* Advent Carol Service 6.30pm. Advent Carols & Readings led by the Choir.

*December 16th.* Parish Communion; Theme - "Preparing for Christmas" 10am.

*December 23th.* Traditional service of Nine Lessons & Carols by candlelight - with readings, carols sung by the choir, and well loved carols for all to sing.

*December 24th.* The Christingle Service 5.30pm. A family service for everyone with the lighting of the Christmas Tree & the Christingles.

*December 24th.* Midnight communion 11.30pm. By candlelight with carols. Come and greet Christmas Day with the first communion of Christmas or for a blessing. This is a sung Eucharist led by the Choir.

*Christmas Day.* A Family Service with communion for everyone at 9.30am.

Everyone is welcome to join us at St. John's, Abbeydale Road South.




**J S Jackson & Sons**  
of Dore  
Plumbers  
Central Heating Engineers

Gas • Oil • Solid Fuel  
British Coal Heating Engineers  
Corgi Licensed Gas Installers

**ESTIMATES FREE**  
**(0114) 258 8928**  
After Hours & Enquiry Service  
Repairs, large and small, receive prompt attention

- Glazing • Wall Tiling
- Bathrooms • Showers •

**DORE OPTICIANS**  
PETER BLAND  
BSc (Hons) MCOptom



FULL SIGHT TESTS/EYE  
EXAMINATIONS, NHS OR PRIVATE  
FREE GLASSES FOR CHILDREN  
AND NHS BENEFICIARIES.  
ALL TYPES OF CONTACT LENSES  
AND SOLUTIONS.  
CHILDREN AND FAMILIES  
ARE WELCOME.  
FRIENDLY, HELPFUL SERVICE  
FREE CONTACT LENS TRIAL  
GLASSES REPAIRED  
SPORT GLASSES  
OPEN 6 DAYS.

A Personal Service on your doorstep  
**Telephone: 236 3200**  
25 Townhead Road, Sheffield S17 3GD

**Mark Whittaker**  
Your local CORGI plumbing  
and heating engineer

*All aspects of heating, plumbing  
and gas work undertaken*

- CENTRAL HEATING
- GAS FIRES
- BOILER SERVICING
- BATHROOM INSTALLATION
- WATER LEAKS
- ADVICE ON ENERGY  
SAVING
- 24hr EMERGENCY  
CALL OUT

*Call for a free no obligation  
quotation*



Corgi Registered  
Gas Installer  
22A991

**Tel: 0114 268 5853**  
**Mob: 07970 498553 (24hr)**



# Garton Decorators Ltd Painter & Decorator

ESTABLISHED 21 YEARS

Interior & Exterior Decorating  
Paper Hanging  
Free Quotes and Advice • Quality Work



Phone David on  
Hope Valley:  
(01433) 651847



Mobile:  
07768 585249

email: garton.decorators@virgin.net

# Tile Style

Interior Wall  
and Floor Tiler

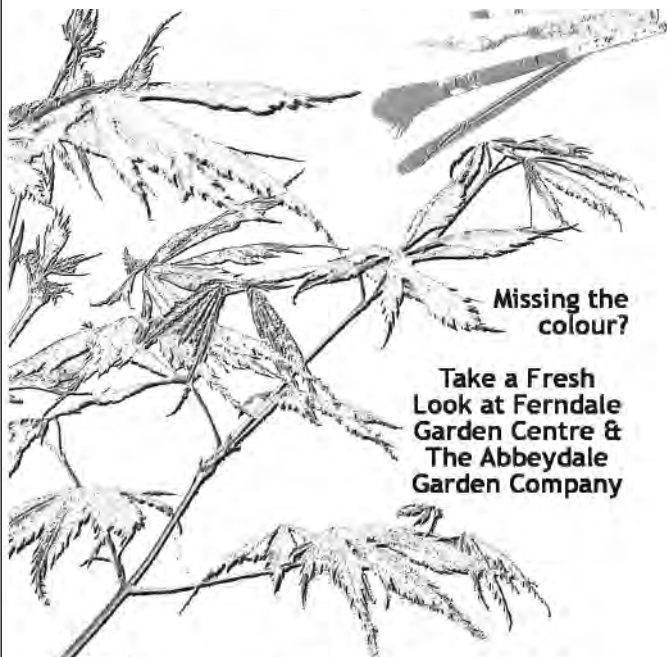
Free Quotes  
Competitive Rates

2 Whirlow Court Road  
Sheffield S11 9NT

Call Stuart on 0114 201 4165  
or Mobile 07984 884319



# Paint a Fresh Garden



Missing the  
colour?

Take a Fresh  
Look at Ferndale  
Garden Centre &  
The Abbeydale  
Garden Company



...making your world more beautiful



www.garden-glorious.co.uk

Ferndale Garden Centre  
Dyche Lane, Coal Aston,  
Dronfield, S18 3BJ  
01246 412763

The Abbeydale Garden Company  
Abbeydale Road South, Dore, Shef-  
field S17 3LB  
0114 2369091

# Gordon Lamb Toyota

Sheffield and  
Chesterfield.

View our full list of over 200 Toyota at:  
[www.toyota.co.uk/gordonlamb](http://www.toyota.co.uk/gordonlamb)

## GORDON LAMB

Call us direct at local rate...

SHEFFIELD 363 Bramall Lane.  
Telephone: 0845 373 5547

Also at: CHESTERFIELD  
2 Lockford Lane.  
Telephone: 0845 373 5546

Calls may be recorded for training purposes



TODAY TOMORROW TOYOTA



# R.A. Electrical

84 Abbeydale Road South

Sheffield S7 2QP

Tel: 0114 236 5555

Domestic Rewiring  
Specialists



Reg. No. D100282



E. & L. Wilson

Builders & Plumbers  
☎ 0114 236 8343

- Central Heating,
- Domestic Plumbing,
- Glazing, Double Glazing and Glass,
- House Maintenance,
- UPVC and Wood Windows & Doors



Mini Digger & Driver, Muck Shifts, Footings Etc.

**Foundation Trusts** are a relatively new development in the organisation of the National Health Service. Essentially, the new Trusts are independent of the Department of Health with a Board of Governors, elected from staff, patients and individuals in the community who have joined as Members of the Foundation Trust. In addition, there are partner governors who represent related groups such as the City Council, the Universities, voluntary organisations, the police and also other NHS trusts of the city.

In Sheffield there are two Trusts which have achieved Foundation Trust status, The Children's Hospital and the five hospitals forming the Sheffield Teaching Hospitals, alphabetically Charles Clifford Dental, Jessop Wing, Northern General, Royal Hallamshire and Western Park Hospitals.

Readers will not be surprised to learn that in reality, the situation is much more complex than that, if only because the finances are derived from the Government and it would be surprising if there was absolutely no control on how they are spent. Nevertheless there is more flexibility, with regulation provided by Monitor, who ensures that activities are appropriate, while the Healthcare Commission reviews the range of clinical and managerial responsibilities at regular intervals.

An important feature of these Foundation Trusts is that all members of the public are invited to become Members to enable them to be aware of the activities carried on in the provision of health services in the City, and more to the point, to have major opportunities of learning the main aspects of work in the hospitals, and to influence and participate in their governance.

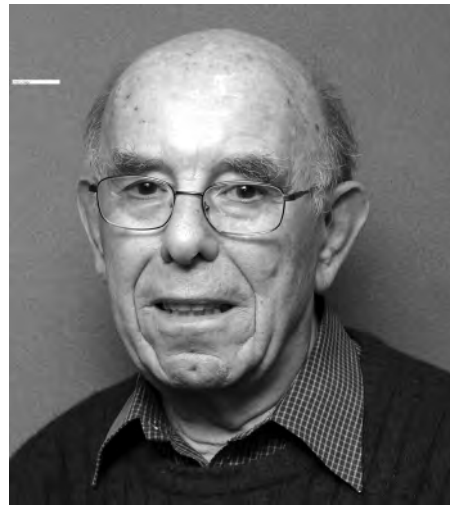
They are kept informed, by a newspaper, Good Health, by regular meetings offering information about health matters and an Annual General Meeting at which matters are presented of general health interest, discussions can take place about topics of importance, and at which senior staff can be questioned. This is an important opportunity and Members should look out for its date and take advantage of the opportunity to attend to get answers to their questions.

Governors are elected from the areas of

## Sheffield Teaching Hospitals NHS Foundation Trust

Sheffield, from staff and from patients, for a period of three years. They are expected to take an active interest in the work of the Trust, to visit all departments and wards of the hospital, both clinical and service, and to present reports on their visits to the Foundation Trust Board for consideration and action where appropriate.

They also have a role as communicators with their electorate, something which can be of greater or lesser difficulty depending on the opportunities they can offer to meet with their constituents. The easiest group is the Staff group who are more generally available within the hospitals to meet with their own colleagues and offer suggestions



*Philip Seagar locally elected Governor Sheffield Teaching Hospitals Foundation Trust*

or complaints.

The Public governors are theoretically accessible, but their public must know about them, their availability and the opportunities of hearing what they have to say and how to contact them - hence this brief outline. The most difficult group to keep in contact is the Patient governors, who inevitably are widely scattered, and while they have been patients of hospitals within the Foundation Trust, may not necessarily be living within the Sheffield City boundaries.

Speaking for myself, I have to say that the local Foundation Trust status offers great opportunities to everyone to take an interest, participate, question and complain about an important area of local activity concerned with personal and public health. As your locally elected Governor, I am happy to offer any further information I am able, to forward praise or blame to the right quarter and to act as a communication line for anyone who wishes to take advantage of it.

**Philip Seager**

9 Blacka Moor Road,  
Sheffield S17 3GH  
Tel: 0114 236 1925  
pseager@btinternet.com

I urge all who are not yet Members to join, by contacting:

Jane Pellegrina  
Foundation Trust Office  
Sheffield Teaching Hospitals  
NHS Foundation Trust  
FREEPOST NAT9274  
Sheffield S5 7ZZ  
Tel: 0114 271 4322  
email: jane.pellegrina@sth.nhs.uk

## Get Walking

The Ramblers' Association's 'Get Walking - Keep Walking' project to help people in big cities do more regular local walking for health and well-being is to receive a substantial grant from the Big Lottery Fund.

The cash is part of a £20 million funding package from the Lottery's Well-Being Fund awarded to the Active Travel Consortium (ATC), a unique grouping of cycling, walking and health organisations, to help communities in England build healthier lifestyles.

Together the ATC will deliver projects that enable over two million people to walk and cycle more for everyday journeys. In addition to the Ramblers, the members of the ATC are British Cycling, Cycling England, Living Streets, London Cycling Campaign, National Heart Forum, National Obesity Forum, Sustrans, Transport 2000 and Walk21.

'Get Walking Keep Walking', which has been successfully piloted in south London and south Birmingham, provides free locally based 12-week walking programmes combining information and motivation with led walks and other activities. There is also a DIY pack for those who can't attend sessions.

The project is aimed at people who aren't already active enough for good health and who could benefit from doing more everyday walking close to home - not only for health and leisure walks, but also trips to the shops, school or work.

Around 90,000 people in deprived areas of south and east London, Birmingham, Manchester and Sheffield will benefit from the scheme, which also involves training hundreds of volunteers, including walking ambassadors - keen walkers who can share their enthusiasm and knowledge with others - and route developers to research easy a attractive local walking routes. For more about the project visit [www.getwalking.org.uk](http://www.getwalking.org.uk).

**ELR AUCTIONS**  
Established 1840

Antique & Fine Art Auctioneers & Valuers

### Thinking of selling Antiques?

Quarterly Antique & Fine art Specialist Sales  
and Fortnightly Antique & Collectables Sales  
Our National and International Customer Base  
are always seeking to purchase

Antique furniture, Porcelain, Paintings, Silver  
and Jewellery, Sporting Memorabilia, Coins,  
Medals and Postcards, Clocks etc.

Complete Estate Clearance or Individual Items Sale Or Initial Advice and Pre-Sale Home Visit by a Qualified Valuer

The Sheffield Salesroom, The Nichols Building, Shalesmoor, Sheffield, S3 8UJ

Telephone 0114 281 6161 [www.elrauctions.com](http://www.elrauctions.com)



### Do you require a Valuation?

Professional Valuation Service  
for

- Insurance
- Probate
- Insurance Claims
- Family Division
- Inheritance Tax

Contact us for a confidential Home visit  
by a Qualified Valuer



63 Baslow Road, Totley Rise, Tel: 236 4485

- Comprehensive Eye examination
  - Diabetic Screening
  - Designer Name frames
  - Value frames from £10
- Contact Lenses disposable; colours; multifocal

Also at 739 Abbeydale Road, Tel: 255 6554  
Website: www.mko.co.uk Email: martyn.kemp@mko.co.uk

# Chiropodist

Jennifer Downing, S.R.N.  
**Qualified Chiropodist**  
M.S.S.Ch. M.B.Ch.A.

Surgery behind Dore Chemist  
Townhead Road

**Tel: 0114 236 2048**  
24 hour answering service

## First Steps Nursery School



Dore Old School, Savage Lane, Dore, Sheffield S17 3GW

- Available to children from the age of 2 years.
- Registered provider of nursery education for 3 and 4 year-olds.
- Links with schools in both the maintained and private sectors.
- Excellent OFSTED reports

"... provides a warm and stimulating environment.  
Children are happy, confident and highly motivated."

"The quality of teaching is very good."

"Staff are caring and knowledgeable. They thoroughly plan  
and provide worthwhile, stimulating activities..."

"Staff give excellent support to children with special educational needs..."

"Children have excellent opportunities to be creative and use imagination.  
They explore a wide variety of resources to paint, draw, make collages and  
models... Children enjoy singing, listening and moving to music.  
Staff plan wonderful activities..."

(from OFSTED inspection report, March 2004)

First Steps



- Monday to Friday 8am to 5.30pm
- Choice of sessions (subject to availability)
- Choice of term-time only or extended year (45 weeks)

For more information and to arrange a visit, please telephone  
0114 235 3801

## Physiotherapy and Pain Clinic

- Treating the cause, not the symptoms
- Holistic and highly effective approach for acute and chronic musculoskeletal pains in the spine, arms or legs not responding to conventional treatment
- Gentle treatment techniques for arthritis, especially suitable for older people
- Whiplash, sports and falls injuries
- Home visits on request



Dore Physiotherapy Practice

**Tel: (0114) 262 1255**

Mrs. Esther Hague BSc (Hons) Physiotherapy  
56a Dore Road, Sheffield S17 3NB

## TRUGREEN® Professional LawnCare

A ServiceMASTER BRAND

The world's largest LawnCare company is now in your area!

We provide:

- Fertilisation
- Weed and Moss control
- Scarification
- Hard surface weed control
- Disease treatment
- Aeration
- Insect control

Starting at just £13 per treatment. Call now for a free LawnCare Analysis.

**Tel: 01246 292187**

TRUGREEN Sheffield & N.E.Derbyshire.



**SERVICE LTD.**  
AERIALS & SATELLITES

- ❖ All Areas Covered
- ❖ Fast - Proficient - Professional
- ❖ Digital Freeview Aerials
- ❖ Multi point - Sky Relocation
- ❖ D.A.B, Aerials
- ❖ Meter Alignment - Tuning Service
- ❖ LCD & plasma TV installations

**NO CALL OUT CHARGE \* NOT VAT REGISTERED**

**OFFICE & EVENINGS 9am - 9pm 0114 258 5181**

**Immediate attention**

**621 Chesterfield Road, Sheffield S8 0RX**

## The Wildlife Garden

Insomnia and I are old companions, but after spending night after sleepless night in futile wrestling matches with the sheets, one evening in summer I decided to do something more productive: listen for wildlife in my night-time garden. At dusk, wrapped up in a warm coat, blanket and long scarf, I cocooned myself in a deck-chair like a passenger on a cruise ship braving an Atlantic storm.

I didn't have to wait long for my first visitor to arrive; a small hedgehog emerged from somewhere close-by and made its way straight to one of the food bowls I had left out, noisily gobbling down the mixture of bird seeds, raisins and hedgehog 'nibbles'.

The reason for its single-mindedness wasn't too difficult to work out as hot on its heels, an older and much larger one arrived, snorting determinedly at the youngster. Despite snorting in reply, the smaller animal nevertheless relinquished its place, sublimating his anger by bulldozing its way through my bedding plants. After eating a leisurely meal, the victor had a long drink of water from the bird bath, before it too disappeared off into the night.

By the street light a bat darted backwards and forwards, hunting moths attracted to the orange glow and in doing so, cast flickering shadows over the garden. Occasionally an owl would also fly close to the light, affording me with a glimpse of the bird, but usually they remained invisible. However, they were

anything but silent.

I had always assumed that autumn was the best time to hear tawny owls hooting, but all night their calls echoed around, no doubt the parents communicating with one another and their offspring. Mind you, the young birds made vocalisations which sounded quite different from the familiar wavering hoots of the adults and these were so unnatural, it is no wonder owls used to be considered harbingers of bad luck and death.

Even with the ever-present glare of street lights, it was hard to identify the animals which were in my garden after midnight. But from the snuffling and crunching noises I heard, I assumed a succession of hedgehogs were coming to the feeding dishes (the time they arrived gave a good estimate as to how far the animals had traveled from their day-time nests). This was confirmed on subsequent nights when there was a full moon and its light afforded me a good view of all the hedgehogs. But it soon became obvious that few ever returned.

Although it is true that some hedgehogs do wander far and wide and their travels may simply have taken them away from my garden, scientists researching hedgehogs that stick to the same few gardens, found that many of their monitored animals are now tending to travel much greater distances each night looking for food. They put this down to the boom in 'hedgehog-unfriendly' features in gardens, such as gravel beds, block paving and decking.

Of course once these animals start

having to wander further a field, the more dangers they face, particularly from traffic. Could it have been that the lack of repeat clientele at my food plates was due to this reason? Even though I cannot prove a link, around the same time I found corpse after squashed hedgehog corpse along the local roads. Who knows, perhaps all the owl hooting wasn't to warn me of impending doom, but instead forewarned the fate of my spiny garden visitors.

As the first ray's of the sun cut through the darkness, I breathed a sigh of relief when 'my' two resident hedgehogs came back (although only one is still around at the time of writing) and while the sunrise was glorious, in contrast the dawn chorus that heralded the day was a hushed, pathetic affair.

Still, there were other noises in abundance: taxis dropping off rowdy clubbers; workers hammering on the railway lines; cars and motorcycles being raced along the main roads and planes flying so low I could see straight into the cockpit of one of them. It seemed to me that we had replaced the snuffling of garden hedgehogs and early morning bird songs with the unwelcome roar of 'cruising' cars and budget airline flights overhead.

So, the next time you can't sleep (and reading my article doesn't solve your insomnia), if you go out to greet the dawn put on warm clothing, but also, remember to take along your ear plugs; you will probably need them.

Jack Daw

## Learn to drive

**DRIVIN  
SKILLS**

**1st Five Lessons £50.00**

£18 per hour thereafter or £35 for 2 hours

Visit our website, phone or email Ian for more details

Tel: 0114 235 1153

Mobile: 078123 77119

email: drivinskills@hotmail.co.uk

web: www.drivinskills.co.uk

We offer Learner driver training, Theory test help and advice, Pass Plus courses, Refresher lessons and Intensive training.

## Not all solicitors are the same!

We believe in customer service - that's why our clients come back to us time and time again

In a recent survey, 98.6% of respondents said they would recommend Graysons to others

would you recommend your solicitors?

**GRAYSONS**  
SOLICITORS

exceeding expectations



Inheritance Tax Planning  
Elderly Client Services  
Separation & Divorce  
Medical Negligence  
Wills & Probate  
Personal Injury  
Conveyancing  
Child Care

free initial consultation

0114 2729184

SHEFFIELDDesign

GRAPHIC Design  
WEBSITE Design  
LEAFLET Design

0114 236 6908  
sheffielddesign.co.uk

# APPLE FENCING

FOR ALL YOUR FENCING NEEDS  
SUPPLY ONLY OR SUPPLY AND FIT  
CONCRETE POSTS AND PLINTHS

ALSO AVAILABLE

CONTACT DARREN FOR A FREE QUOTE  
ON 01246 237505 OR 07782 167540



New Builds, Extensions, Patios  
All aspects of building work considered

**Free Quotations**

**Tel: 01298 871 773 Mob: 07780 817 330**



Need Help with  
your PC??

home and small business

## abc Data Recovery Ltd

*Problems getting switched on, recovering lost/deleted files, opening password protected/ encrypted files, setting up email and networks, or moving/wiping files from your old computer then never fear Andy Butler is here!*

PC optimization,  
full range of spares,  
Microsoft Registered  
Partner, Bespoke  
systems/networks  
built, including  
multi-monitor systems.



**Just call 249 1073**

**or email one of the following:-**

**cureme@virusfixer.co.uk**

**fixme@glitchfixer.co.uk**

**helpme@thewindowshelpline.co.uk**

**www.abc-data-recovery.co.uk**

## Patio Blaster

**Block paving renovation specialist**

*Let me bring your DRIVES  
and PATHS back to life*

*Block Paving resanded and sealed  
no more moss and weeds*

*Tel Dave Andrews on 01709 877412  
07979 431133*

**www.blockpavingcleaning.co.uk**

# HOGG GARDENS

- Autumn and Winter Clearouts
- Tree Care
- Shrub Pruning and Chopping Back

Full range of garden services on offer -  
get your garden ready for next spring.

Friendly, reliable staff, all fully qualified  
and insured.

Flat 2, Tottley Hall, Tottley Hall Lane, Sheffield S17 4AA

Telephone: 0114 2360491

Mobile: 07977 469662

E-mail: reginaldhogg@hotmail.com

## Need a Local Plumber?

### A Wide Variety of Plumbing Solutions

- A fresh new bathroom or cloakroom
- Your old pantry transformed into a W.C.
- New taps or an outside tap fitted
- Showers
- Leaks and repairs

**Call John Snowling  
on 0114 235 9956**

**at Greenhill Plumbing Services**



## Book Reviews

The BBC2 series 'Jimmy's Farm' has proved a hit with viewers fascinated by Jimmy Doherty and girlfriend Michaela's battle to establish and run a successful working farm producing the highest quality products. Produced in association with the series, *A Taste of the Country* contains 80 recipes for traditional farmhouse dishes. Illustrated in colour with pictures from life on the farm and the dishes, it also contains a host of other information from how to choose cuts of meat and grow your own salads to how to keep chickens, whittle a walking stick and make jam.

This book is an invitation to get more involved with the land around you and the food you put on your plate, and will help you to grab a slice of the good life. This has got to be a popular stocking filler. Published by Michael Joseph, 320 pages £14.99 ISBN 978-0-141-02674-9

Still on a culinary theme. Sheffield's Sean Bean needs no introduction, nor does his Sharpe television series based on the books of Bernard Cornwell. *The Sharpe Chefs* are a group of ladies who decided to compile a cookery book in aid of the National Osteoporosis Society (UK) - a charity of which Sean Bean is a patron. With a foreword from Sharpe author Bernard Cornwell, an endorsement by Sean Bean himself, plus recipe contributions from the cast of 'Chosen Men', producers and director of the widely popular TV series, Sharpe Chefs is more than just a cookery book!

Fully illustrated in colour with pictures of the dishes, characters and scenes from the series, the book offers recipes, historical facts, bone health tips and Sharpe themed introductions. It is a sure fire winner for fans of Sean Bean, the Sharpe Series or anyone looking for some new and interesting recipes. Published by Pickard Communication 100pages price £12.99 ISBN 1-905278-16-0 Can be ordered online at [www.youbooks.co.uk](http://www.youbooks.co.uk)



*View of Sheffield*, by professional photographer Adrian Wynn, is a collection of pictures documenting some of the huge changes that have taken place within Sheffield over a ten-year period, between 1982 and 1992. The mono and full colour pictures show how industrial and commercial change have affected the landscape of Sheffield telling a story more effectively than words. Orgreave is a bustling hive of industry in an early shot, becoming a derelict wasteland in a later picture. More positively we also see the beginnings of the city we have today, with pictures portraying the development of Ponds Forge, Don Valley and the Cultural Industries Quarter, as well as the Supertram network and Meadowhall. If you are interested in photography or a pictorial history of our city's recent past, this is a book for you. Published by Pickard Communications 100pages A4 landscape price £12.99 ISBN 1-905278-17-9.

The third book *Brill Walks in the Peak*, sets out to follow a successful formula, the first book in the series having quickly sold out. Twelve circular walks of 4 to 6 miles are centred on four locations, Castleton and Edale, Litton and the Dales, the Upper Derwent Reservoirs, Chatsworth and Baslow. Each of the four sections starts with a carefully researched

story with a real-life origin, telling a tale set in an interesting time in history. Each walk has a map, complete with quirky humorous sketches, and clear instructions, with essential information on starting point, maps, refreshments and the terrain. There are notes on items of interest along the way and colour photographs. Written by Freda Bowman, with photographs by Bob Brill this weather resistant publication, spiral bound with tough, flexible covers, runs to 74 pages, and is published by Northend Ltd price £7.99 ISBN 0-901100-74-9.

*Sheffield's Golden Frame*, described as part walking guide, part historical journey, has been written by Peak District archaeologist Bill Bevan. It explores the moorland heritage of Burbage, Houndkirk and Longshaw, from pre-history to World War II. Bill walked all the ground in his research with some 157 archaeological sites identified in the area, between Dore, Hathersage and Fox House - an increase of 785% on known sites. Besides familiar sites such as Carl Wark, the book introduces a prehistoric burial mound and round house, the story of medieval iron smelting on the moors, how Millstone Edge got its name and how Burbage was used as a military training ground by British and Canadian troops during World War II - you can still see the bullet pock marks on some rocks.

There are six guided walks to enable you to explore the area yourself. Each is highlighted on colour aerial photographs, with guidance on the route and what to look out for. The book is comprehensively illustrated in colour with drawings and the author's own photographs and really helps to bring alive the past that survives hidden among the heather and bracken. Published by Sigma price £8.95 ISBN: 978-1-85058-846-7.

There is no doubt that the presence of crop circles divides sceptics from believers like few other phenomena. In her book *Crop Circles: Art in the Landscape* Lucy Pringle presents the first photographic anthology of the crop circle phenomenon. Whether they are scientific enigmas, paranormal phenomena, mischievous hoaxes or inspired land art, the scale, beauty and mathematical and symbolic complexity of crop circles continues to astound. Throughout the summer months every year, in fields of oilseed rape, barley and wheat, a rash of evermore elaborate circles and designs appear on every continent and in 54 countries.

Lucy has been photographing and researching crop circles for nearly 20 years. In her book she presents a catalogue of her awe-inspiring aerial photographs taken across the south of England, which are guaranteed to amaze believers and sceptics alike. This has got to be a book for the coffee table, bound to intrigue and create debate. Published by Francis Lincoln, in hardback, 114 pages price £14.99, ISBN 978-0-7112-27217.

You can follow the debate and view Lucy's latest photographs at [www.lucypringle.co.uk](http://www.lucypringle.co.uk)

Personal Service & Attention  
to detail ..from beginning  
to end

independentlending

- Mortgages / Remortgages
- No Proof of Income
- Self Employed
- 100% & over
- Debt Consolidation
- Council Right to Buy
- Buy to Let - Up to 90%
- Commercial Finance
- Arrears / CCJ's / Defaults



- All types of mortgages arranged
- Access to thousands of mortgage schemes

(Local Call Rate) Sheffield  
**0845 620 9089**  
[www.independentlending.co.uk](http://www.independentlending.co.uk)  
[Info@independentlending.co.uk](mailto:Info@independentlending.co.uk)

4 Westbrook Court, Sharrow Vale Road, Sheffield S11 8YZ

Adverse mortgages available at a typical APR of 6.9%.  
The actual rate will depend upon your circumstances.  
Please ask for a personalised illustration.

Our typical fee for advising and arranging a mortgage is 1% of the mortgage required. This may vary depending on individual circumstances.

YOUR HOME MAY BE REPOSSESSED IF YOU DO NOT KEEP UP REPAYMENTS ON A MORTGAGE OR ANY OTHER DEBT SECURED ON IT. WRITTEN DETAILS ON REQUEST.



Established 1984

12 Rosamond Place  
Bradway, S17 4LX  
Tel: 0114 2351900  
Mobile: 07831 634197  
www.ATAElectrical.co.uk

Your local Electrical & Alarm specialist  
Fully qualified for all installation &  
Maintenance work - friendly too!

- New installations & rewiring
- Internal & external light & power
- Garden lights, power & water features
- Burglar alarms installed and maintained to BS4737



For free quotations and advice call Tim Allsop

# Apple Landscapes



QUALITY SERVICE  
AT AN AFFORDABLE PRICE

- Patios • Paths • Walling • Fencing •
- Turfing & Garden Tidy ups etc. •
- Indian Stone paving •
- Railway Sleeper Work •

Only quality materials used • Fully insured  
Call for a FREE quote on

PHONE: 01246 237505 OR MOBILE: 07782 167540

## Rubbish Removed

We take most items

**Beds, settees, garden and DIY, baths, carpets, cookers, garages and cellars cleared.**

Environment agency Registration No. YR1/448715  
Identification shown at door.

Free quotes • Genuinely no obligation

Telephone Mike at Draggletail Waste Services

**0114 268 1330 mobile: 07710 446438**

Established six years  
Courteous, reliable service

[http://uk.geocities.com/draggletail\\_waste\\_services/](http://uk.geocities.com/draggletail_waste_services/)



# BRAMDALÉ

FIREPLACES

- ◆ **Fireplaces** Stone-Marble-Wood-Cast Iron
- ◆ **Fires** Gas and Solid Fuel
- ◆ **Stoves** Gas Electric and Solid Fuel Stoves
- ◆ **Central Heating** Boilers replaced  
Free survey
- ◆ **Corgi and Hetas** Fitters
- ◆ **Bar-B-Q** Selection available
- ◆ **Air Conditioning Units** Free surveys  
Free estimates

**BRAMDALÉ** FIREPLACES

**630 Chesterfield Road, Woodseats,  
Sheffield S8 0SA**

**Tel: 0114 258 8818 Fax: 0114 258 4442**

email: [fires@bramdale.co.uk](mailto:fires@bramdale.co.uk)

[www.bramdale.co.uk](http://www.bramdale.co.uk)

## A1 Professional Tiling & Plastering Service



Tel : 0114 274 6775

*Mark Paton*

**07738 688 807**

Good Rates ◆ Free Quotes ◆ No Job Too Small

33 Glenview Road, Greenhill, Sheffield S8 7SF

## GHB CARPENTRY

**George Bonar**

City and Guilds trained Carpenter/Joiner  
Member of the Guild of Master Craftsmen

- Purpose made joinery items designed and made to measure.
- House maintenance and renovations
- New doors fitted, doors trimmed to accommodate new carpets.
- Kitchen supplied and installed.
- Wooden and laminate flooring supplied and fitted.
- Bedroom wardrobe Installations.
- 1<sup>st</sup> & 2<sup>nd</sup> Fixing

Free Quotations and advice

Tel: 0114 2365011 Mobile: 07843 614967



**LOCAL CARPET CLEANING SPECIALISTS**  
*Freshen up your carpets and upholstery*

**Inc: Driveclean**  
*enhance the look of your home*  
**Bring your  
Driveway Patio  
back to life**



**MJ SERVICES**  
UNIQUE SPECIALISED SERVICES  
FOR YOUR HOME AND BUSINESS  
**Tel: (0114) 236 7272**  
**Mobile: 07756 925929**

4 Newfield Crescent,  
Dore,  
Sheffield S17 3DE

## Dore Blues

### *A Community Policeman's view.*

As winter draws in, the days shorten and it will soon be Christmas - I begin to wonder just where did the year go. I hope it's a sign of being busy and not just getting old that it just doesn't seem like two minutes since last years Remembrance Day Parade and yet here we are again. A lot has happened both in Dore and within The Sharrow and South West Sheffield Policing Team, so I suppose at this time of autumnal change it would be appropriate to reflect on these changes. These changes arise as Community Policing needs change.

The Policing requirements, approaches and priorities within our Policing area are many and varied and require in my opinion quite a specialist approach. The last few weeks have seen such varied, diverse events as the Dore Show and the end of Ramadan celebration at the new Medina Mosque on Wolsely Road (which attracted over 3,000 worshippers). I have known for years that Community Policing is not just a job for those close to retirement, but a job for officers who appreciate what it means to serve a community.

The first priority has to be "get to know your community" As most of you will be aware the Sharrow team covers an area which stretches from Bramall lane to Surprise view. As such our 'community' is a complicated hybrid. Finding out what the needs are can only be achieved by many ways. I much prefer the old fashioned "pop in for a coffee" approach but in the 21st century we have to make use of other methods i.e. email( david.spencer@southyorks.pnn.police.uk ) or telephone 01142963681. Other useful methods are attending meetings, giving talks etc. I would encourage any member of our community who has any concerns, fears etc to just get in touch.

As a rule our Policing Team is very



*A village sign spotted in Nidderdale North Yorkshire, which would be just as at home in Dore*

successful at not only recognising the needs of our community but tackling those needs. This has been recently recognised by The Sharrow and South West Sheffield safer Neighbourhood team being nominated for the 2007 Diversity in Action Award as part of Jane's Police Review Gala awards. These awards are held in London in mid November and yours truly has been invited to attend this event. The nomination is recognition enough but it would be nice to win.

The changes have also affected our policing staffing with a loss of PCSO Harran, who moves from the Dore/Totley area to cover Highfields. We are joined by PCSO Mason who covers a much bigger area. P.C. Wadsworth and myself will ensure that this does not adversely impact on Policing cover.

By the time this article is printed the period of Bonfire night will have past. I hope that the annual events pass without incident and I hope to see many friends etc at the Bonfire held in Dore. This year the Policing team will target nuisance youth behaviour as well as targeting local shops

that sell fireworks. A new strategy this year will be to visit shops, which sell eggs, flour etc to make sure that they are aware of their responsibility in helping curb 'mischievous' behaviour.

I would offer my customary reminder regarding Crime prevention. Darker nights can lead to an increase in Crime. Towards the inner city area of our 'patch' we have seen an increase in 'sneak in burglaries' where access is gained through an insecure window/door etc. As our Policing team focuses resources to tackle this it is likely that the thieves will move out of the city.

Can I ask that all of us make extra efforts to make our homes as secure as possible. Unlocked or open windows doors are an invitation to thieves. Of course I can be called upon to offer Crime prevention advice. Also as the nights draw in vehicle crime starts to rise. Please remove all valuables from cars, even if its just whilst nipping into the local shops.

I will close by wishing all the residents of Dore a safe and happy next few months. I shall do my best to keep you all safe and if you need your Community Constables just get in touch.

**PC David Spencer**  
**Dore Community Constable**

## Cyclists accident rates

In Great Britain last year there were 23,730 reported personal injury road accidents involving a pedal cycle and 16,440 involving a motorcycle. In the same period there were 22,676 road accidents involving at least one casualty aged 15 or younger. Of these, 3,294 children were killed or seriously injured - 52 per cent below the 1994-98 average.

Meanwhile cyclists across Sheffield are being offered a free "hi-viz" - high visibility - vest as part of a campaign to reduce the number of accidents involving bikes. The vests, which also carry the message 'The Zero Emission Option', are available from the council's road safety team on 273 6153. The initiative follows the deaths of three cyclists last year and serious injuries to 33.

## FISHER HAULAGE



### *Suppliers of* **Bulk and Bagged Aggregates**

- 25kgs Bags/1 Ton Bags/or Bulk Delivery
- Building Sand/Grit Sand
- Limestone Sub Base
- Clean Limestone
- Concrete Sand & Aggregate
- Topsoil Supplied
- Full range of Decorative Aggregates
- Slate/Gravel/Mulches
- Crane offload onto your site
- Free delivery on orders £30 or over ex vat
- Competitive Prices
- For free advice and a quote give us a call

### **From the quarry floor to your door**

Old Whitelow Farm, Whitelow Lane  
Dore, Sheffield S17 3AG

Tel: 0114 236 0695 Mob: 07721 774629

## BURN-IT



FOR TOTAL SAFE DOCUMENTATION DESTRUCTION SERVICES

*Trusted by the Banks*

Be Sure: *your private documents are protected*

*Nearly 80% of all identity theft occurs off line*

The reason: *Lack of Secure Disposal*

Using Obsolete methods including

- Shredding (a 1930s old method),
- Site tipping • Site burial • Wheelie Bin

Call Us and get a **FREE**

no obligation on-site quotation

**Cleaning Master, Unit 9a,  
City Road Trading Estate,  
295 City Road, Sheffield S2 5HH  
Tel: 0114 272 9300 (7 days)**





# NEIL ROGERS BUILDING SERVICES

For all aspects of exterior and interior building work  
Call **01246 413888** or **07801 547459**  
for free estimates  
and competitive prices



## D.T. TAYLOR Driving Instruction

Driving Standards Agency Approved  
Competitive Rates & Discounts

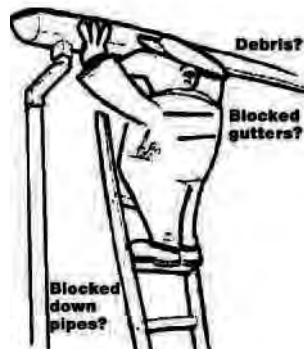
0114 236 8094  
[www.dttaylor.net](http://www.dttaylor.net)

## WINDOW & GUTTER CLEANING SERVICES

Cleaning, Maintenance  
& Repairs

For a **FREE**  
**QUOTATION**  
phone RYAN on  
**07716 256580**

[RCMSservice@msn.com](mailto:RCMSservice@msn.com)



## Films For Any Occasion

By Jane Lavender

Weddings  Anniversaries  Events  Promotions

No matter whether the film's big or small

**I CAN DO IT!**

Right from the filming through to the editing and  
designing to the finished product  
Unique films of Dore Village annual events now available

Website: [www.films4any.co.uk](http://www.films4any.co.uk)

email: [jane@films4any.co.uk](mailto:jane@films4any.co.uk)

Telephone (0114) 262 0238



## Help is at hand for local business

Providing IT help to improve your business efficiency.

Managing projects, systems review and advice,  
assistance with implementation and training.

Contact Colin Lavender to arrange a free  
review discussion.

**IT Help 4 Business**

Dore, Sheffield

[www.ITHelp4Business.co.uk](http://www.ITHelp4Business.co.uk)

Tel: 0114 2620720



SINGLE TO FULL COLOUR  
QUICK TURNAROUND AT LOWEST COST  
FROM A BUSINESS CARD TO A CATALOGUE



**SP**  
**southyorkshireprinters**  
CREATIVE COLOUR PRINT

DIGITAL WORKS . HARVEST LANE . SHEFFIELD . S3 8EG

**0114 272 1105**

[www.southyorkshireprinters.co.uk](http://www.southyorkshireprinters.co.uk)

# COMPLETE GARDEN SERVICES

**Competitive  
Rates . . .**

Lawns Cut

Hedges Cut

Winter Tidying

No Job Too Small

Routine Maintenance

All Tree Work Carried Out

All Work Insured

**Telephone  
0114 246 5233**

**Mobile  
0785 587 5474**

## Classified Advertisements

To cash in on unwanted items or promote your services locally, all you have to do is phone **Sheffield 236 9025** to discuss your wording then send it along with a fee of **£1.50 per line** to the address on page 2.

**YOGA IN DORE.** Did you ever attend Andy or Aurora's classes?. Same style yoga being taught at the Arc (by Church Hall, Townhead Road). 19:30 - 21:00 Wednesdays pm's. Please contact [lowe12@hotmail.com](mailto:lowe12@hotmail.com) **07739490143**

**DOG WALKING**, any evening and weekends. £3 per ½ hr. £5 per hr. No dog too small. Call **07809607933** and leave a message for David

**PRIVATE MATHS AND SCIENCE TUTORIAL** by experienced tutor. All levels taught. Call Dr Dianna Talib on **07765 430369**

**MATHEMATICS TUTORIAL** - GCSE and A Level Mathematics - references available. Tel Dave on **0114 236 3153**

**ABBEYDALE PROBUS CLUB** Our male Probus club meets at Abbeydale Sports Club at 9.45am on the first, third and fifth (where applicable) Wednesday of each month. New members are welcome. Ring our secretary on Sheffield **230 8201**

**RUBBISH REMOVED.** See main adv in this issue. **0114 2681330 07710 446438**

**IS YOUR CHILD STRUGGLING AT SCHOOL?** I can help. Qualified, experienced local teacher offers home tuition. Details from **0114 236 2903**

**HOLIDAY PET CARE** If you don't like kennels or Catteries: call Dave at K9-Minders. **01246 418587** or **0776 237 7394**

**60 MINUTE LASER TEETH WHITENING.** Go up to 10 shades lighter with the latest 'BEYOND WhiteSpa' instant teeth whitening treatment. Mobile treatments available. £179. **07717710355** [www.teethbright.co.uk](http://www.teethbright.co.uk)

**NEW MESSY MONKEY SESSIONS** in Dore. Fun activities for 1 to 5 year olds include painting, crafts, messy play, sand & water play. Call Sarah **2362110** to book.

**PHOTOGRAPHS RESTORED** A unique Christmas gift. Specializing in the restoration of vintage photographs. Pay only when you are satisfied with the result. No payment required in advance. Phone **07780982880** [www.Photographs-Restored.co.uk](http://www.Photographs-Restored.co.uk)

**K9-MINDERS** Dog Walking & House/Pet Sitting Service. Police Checked, Fully Insured: **01246 418587** or **0776 237 7394**

**MUSIC TUTORIAL.** Piano, Electronic Keyboard, Theory, Harmony. Enjoyment or exams. Beginners to advanced. Full prospectus available. Bradway Music: Geoff Henthorn GNSM, Tel: **235 2575**

**WHITBY HOLIDAY APARTMENT** to let. Modern second floor accommodation with one double bedroom close to all amenities. Non smoking, sorry no pets. Tel: **236 8611** or **07986 590320**.

**LOCAL DRIVING INSTRUCTOR** - DSA approved. competitive rates and discounts. Ring Dave on **0114 236 8094** or e-mail at [drive@dtaylor.net](mailto:drive@dtaylor.net).

**HORIZON ELECTRICAL** All aspects of domestic electrical work. Competitive rates. Phone Totley **236 4364**

**CRUMBS** Make and Decorate cakes for all occasions. Each cake is individually decorated for you. Call Lucy Cole on **235 2358** or **079 4194 6133** or e-mail [crumbs1@hotmail.com](mailto:crumbs1@hotmail.com)

**PLUMBING, HEATING & GENERAL HOME MAINTENANCE** 35 years qualified tradesman. For free estimate and competitive rates call John Ford on **0114 235 9746** or Mobile on **07761 569068**

**DOG LOVER WANTED:** with time to spare and a secure garden for short-term fostering. Contact K9-Minders.

**GREEK TUTORIAL.** Beginners to advanced. Tel: **07711719128**

**TENERIFE SOUTH** - Exclusive side of Los Cristianos. 1 bedroom private apartment with gorgeous sea views, large balcony with spiral staircase to private roof terrace. Well situated for all local amenities. Lovely restaurants, bars & supermarkets close by. New 2 storey complex, suit more mature couple. Tel: **01142 377350** or **07880 746141**

**CHARTERED ACCOUNTANT** Tony Ball BA FCA. Many years experience at all levels. No problem is too big or too small. Personal service and complete confidentiality. Tax returns, small businesses, charities, VAT etc Phone **0114 236 1471** e-mail [amjballfca@blueyonder.co.uk](mailto:amjballfca@blueyonder.co.uk)

**FLORIDA VILLA** 4 bed/2 bath with Pool and Aircon. 10 mins from Disney's Animal Kingdom. Sleeps up to 10 plus cot. Call owners on **0114 235 0615** or **07963 325505** or visit our website: [www.stitzfloridavilla.com](http://www.stitzfloridavilla.com)

**DIAMOND DOMESTIC PLUMBING** All installations and repairs. Free estimates; no job too small. City and Guilds qualified & fully insured. Tel Kevin Malaure **2360868** or **07775 584169**

**R.D. HOWE PLASTERING**, local City & Guilds trained craftsman, for all your plastering needs. Domestic and restoration specialist. Call Richard on 0114 **262 1905** mobile **07963 556295**

**BABY YOGA** - Good fun and gentle exercise for your baby and you. Sessions consist of massage, exercise and relaxation for both parent and baby with songs and rhymes to make it fun and easy to remember. Call Liz on **07811 281213**

**CARPENTRY, JOINERY.** Internal and external work undertaken. No job too small. Free quotes. Phone Anthony Pinder on **07814 029960** or **0114 274 8237**

**FRENCH ALPS** Luxury Summer/Winter Apartment for skiing, walking, cycling, climbing holidays. Sleeps 4-6, especially well equipped for children. Tel **262 1781** or see [www.apartmentfrenchalps.co.uk](http://www.apartmentfrenchalps.co.uk)

**LANDROVER REPAIR SERVICE** MOT repairs, chassis welding, service & maintenance. Call Ian on **079 7019 2717**

**CARPET CLEANER HIRE.** Free local delivery. M.J. Services **0114 236 7272**

**WOULD YOUR DOG** enjoy a walk on Blacka Moor? Daily walks. Phone John on **235 2099** or **07765 915078**

**HOLIDAY COTTAGE TO LET** overlooking the sea in a beautiful fishing village on the Moray Firth, N.E. Scotland. Sleeps 6 people. **262 1043** for brochure.

**DRAMA CLASSES** for children. Qualified theatrical tuition. Age 6-10; Wednesdays 4.30 - 6.00 Fridays 4 - 5.30. Age 11-18; Wednesdays 6.00-7.30. Dore & Totley United Reformed Church Hall, Totley Brook Road. Jackie Collins (BAHons) School of Drama Tel **236 7564**

**WHITBY HOLIDAY COTTAGE** to let. Tucked away at the foot of the Abbey Steps. Very quiet. Sleeps 4, full central heating, microwave, washing machine, DVD, satellite TV, etc. Non-smoking. Sorry no pets. Tel: **235 6143**.

**TELEVISION AND VIDEO RECORDER REPAIRS** City and Guilds London Institute. Fully qualified. Over 25 years professional experience. Ex Bunker and Pratley. For prompt reliable friendly service ring Richard on **0114 - 287 6806**

**CHIROPODY** Home Visits Amanda Ross FSSCh. MBChA. DipPodMed Tel: **07904 919775**

**NEW & RECLAIMED OAK STRIP FLOORING** for sale. Fixing service available. Tel: **235 1934**

**MARBELLA**, Costa del Sol. Very large penthouse apartment to let. Stunning views over golf course and to the sea. 2 bedrooms, sleeps 6. Must be seen to be appreciated, so visit our web pages [www.laquantagolf.co.uk](http://www.laquantagolf.co.uk). Fully equipped, AC, satellite TV etc. "Meet and Greet" service. Details - Mike Cox **235 0534**

**DORE QUILTERS** A small group of quilters meeting on the 3rd Wednesday of each month 7 to 9pm to share knowledge of traditional and creative patchwork and quilting methods. We meet at my home as group leader. New members are welcome. Please ring Barbara on **0114 262 0699** [www.daisybee.co.uk](http://www.daisybee.co.uk)

**CURTAINS AND ACCESSORIES** making service. Also interior design advice Tel: **07803 198532**

## Stars in Dore

As seen from the outskirts of Dore, say, on Causeway Head Road, Brickhouse Lane or Newfield Lane, or in the Recreation Park, the late-Autumn and Winter constellations are spectacular on a crisp clear night when the Moon is not above the horizon. The Milky Way stretches across the whole sky and passes overhead.

Constellations like Cygnus the Swan and Aquila the Eagle are disappearing in the western sky earlier each month, Gemini the Twins and Canis Minor the Little Dog are making themselves more and more visible lowish in the east, and Cassiopeia, Andromeda, Perseus, Aries the Goat, Taurus the Bull shine almost overhead.

Surely the grandest constellation, however, is Orion the Hunter with his Great Dog and the Dog Star, Sirius. Lower in the southwest and south one can see Cetus the Whale and Eridanus the River, two less familiar constellations.

To get good views of our wonderful Universe, it is best to look skywards when there is no bright Moon. First we would like to point out that the night of the Full Moon does not occur on 24 December as most of your calendars would suggest but runs through the night of 23rd and 24th. The Moon is Full at 1.17 am on that Sunday/Monday night as viewed from Earth. In November the Full Moon is at 2.31 pm on Saturday 24th, and in January it is at 1.36 pm on Tuesday 22<sup>nd</sup>.

Most astronomical events like this can be thought to actually occur in split seconds and depend on where one is situated in space, and it is only the fact that the naked eye cannot discern the difference between a Moon one day before or after Full that really artificially lengthens the event at all. For a spaceship heading for Mars the Moon would not appear Full at this time.

If, instead of in a beautiful village like Dore, one lived on a desert island without a clock, the Moon would make a rather poor time-piece since its periodic behaviour, although accurately known, does not fit in too well with our normal lives.

Mars can be seen very well from Dore now. It is in the constellation of Gemini (November and December) and is moving backwards (west to east) towards Taurus as we approach January during its so-called retrograde motion. The red planet at magnitude -1.63 passes very close to the near Full Moon on 26 November and also on 24 December appearing just below the Moon. At Christmas it is at only 55 million miles away from earth. It is actually closest to Earth on 19 December. Its disk is 15 arcseconds which sounds like a very small angle but this is as large as it will get for some years, and looks fine in a small telescope, and very spectacular indeed in a large instrument.

Saturn is faint at between magnitude 0.47 (Nov) to 0.29 (Jan) and is in Leo. Its disc is only a little larger now than that of Mars. The constellation of Leo is well below the northwest horizon for the first part of the night. Nevertheless, it is

possible to clearly see Saturn near to the star Regulus in the east after about 3am in November, after 1am in late December, and after 11pm in mid-January. The rings have closed down quite dramatically compared with two or three years ago. This brings Saturn's moons apparently closer together and much more in a near-straight line, making it much easier to find them in a telescope.

Jupiter is not visible at this time since it is in conjunction with the Sun. The faint distant planets, Uranus and Neptune are in adjacent zodiacal constellations, Aquarius and Capricorn. Venus is a bright morning object in mid-November at magnitude -4.3 and will remain visible each morning until after Christmas. Mercury is also a morning star in the east southeast in November but disappears into the sunlight quickly, typical of this fleety, elusive planet.

If there are any big questions in astronomy which interest people, it is surely the question about the Universe's beginning; one could add, if indeed it had one. Recently quite a few leading astronomers have come up with fresh ideas about the era before the Big Bang. These ideas are, however, not entirely new since there have been theories about a possible oscillating Universe before.

Whereas we cannot all comprehend the arguments for and against such vast questions we can fairly reliably take what the experts are saying. Who could doubt the few scientists in Los Alamos in the 1940s who perfected the atomic bomb, or Lenoir's first practical internal combustion engine in 1860 which led to the motorcar? Back to Eternity?

*David Andrews*

*Ed. You might be interested in the pictures here:*

*[http://antwrp.gsfc.nasa.gov/apod/archiv\\_epix.html](http://antwrp.gsfc.nasa.gov/apod/archiv_epix.html)*

---

## Classified Advertisements

---

**LAMINATE FLOORING** For a quality fitting service and free friendly advice, call Peter Holdsworth on **01246 433226**

**ENGLISH LANGUAGE LITERATURE** GCSE & A Level tuition. Tel **236 8493**

**PLUMBER** - Steve Higgins Plumbing, installations and repairs J.I.B. registered. Free estimates No job too small Tel: **0114 236 3275** or mobile on **07773 039443**

**TO LET:** Swallow Cottage, Totley Bents Beautifully renovated stone built property accommodates 4. Phone **0114 236 7806** English Tourist Board 4 star rated

**CREATURE COMFORTS** Professional and caring Cat Sitting Service. Ex manager of a local cattery available to care for your cat(s) while you are away from home. Call Bev on **079 060 17511**

**HELEN O'GRADY DRAMA ACADEMY** Weekly confidence building drama classes for children. Church Hall, Townhead Road. Saturday 2pm and 3pm. Start October 6th. Details **255 9100**

**COLOR ME BEAUTIFUL** Looking good every day can be easy .... when you know what is special about YOU - Colour analysis, make-up, weddings, style analysis and more! Gift vouchers available - what a great present! Phone Sue Potts, Color Me Beautiful Image Consultant, 59 Bushey Wood Road, S17 3QA. Tel: 0114 **236 2968**

**RUBBISH REMOVED.** See main ad in this issue. **0114 2681330 07710 446438**

**COTTAGE ACCOMMODATION** in Dore short term, especially suitable for visiting friends and relatives; Tel: **236 6014**

**HATE IRONING?** Let me do it - I love it! (what's more - I'm good at it!) FREE local collection and delivery Eg: Shirt 1.15p, T shirt 65p, Jeans 1.15p Tel: **235 2511** or **07817 107566**

**HARDWOOD LOGS** Delivered free. Bags or Bulk **01246 412504** or **07718 580231**

**QUALITY** interior & exterior **DECORATING** Hinchcliffe Decorators, the professionals. All work guaranteed, estimates free. B.D.A. Member. Please phone **262 0584** or **0797 7956979** mobile

---

## Easy Going Trail

The Friends of Ecclesall Woods have recently completed refurbishment of some woodland paths and trails to make this city beauty spot more accessible for elderly people and visitors with disabilities.

They secured a grant to pay for the work and managed to completely resurface 1,000 metres, the largest area of path that has ever been overhauled in the woods. Some access had been almost inaccessible because of boggy ground, but the group came up with an attractive solution. They created a boardwalk to span the bogs, which means that wheelchairs and pushchairs can now use that path.

The group have just launched a new membership drive to encourage other people to help look after the woods. Anyone who joins will receive a free booklet on Ecclesall Woods and maps of picturesque walks. Membership is £5 for individuals and £8 for families. Write to Lorna Baker, 8 Thornsett Gardens, Dore, Sheffield, S17 3PP.

---

## Path restored

The Peak District National Park Authority has restored an ancient path to offer walkers breathtaking views of the Hope Valley. The "hollow-way" sunken path was carved out of the landscape by pack-horse trains that used to cross Ridgewayside, above Hathersage. Accessed near a T junction on Coggers lane, it links up with existing footpaths leading to Stanage Edge.

Offering fresh views of an outstanding panorama, the path also gives access to three traditional hay meadows which bloom with wild flowers in June and July.

## Diary - Winter 2007

### NOVEMBER

- 17 **Sheffield Bach Choir** St Mark's Church Broomhill Westminster Mass by Roxana Panufnik, Chichester Psalms by Bernstein and St Nicolas by Britten 7.30pm
- 20 **Totley History Update** talk by Brian Edwards, 7pm All Saint's School, Hillfoot Road. Tickets from 236 1934
- 20 **Xmas flower demo** by Valerie of Dore Florists at Dore Methodist Church 7pm in aid of the charity WORK Ltd.
- 24 **Working Day** at Whinfell Quarry Garden 235 0534
- 24 **Book Sale** - nearly new/good condition + Bric a brac, LPs, CDs, and home-made cakes for Lib Dems, Dore Old School, 10.15am - 12.30pm. All welcome.
- 26 **Our Minister** Talk by Rev. Garry Dawson-Jones for Dore Methodist Women's Fellowship 2.30pm
- 25 **Xmas Fayre** Whirlow Hall Farm, 10am - 3pm. Craft stalls & Farmer's Market, festive music & refreshments.
- 27 **New Forest.** Talk with slides by Bob Warburton for Dore Methodist Tuesday Group 7.45pm Church Hall
- 28 **Women Artists of 20th Century** Lecture by Jane Sellars for Sheffield Society for the Encouragement of Art 2.30pm, Tapton Hall, Shore Lane. Admission free
- 29 **Christmas Sale,** Dore Art Group, The Old School, 2 - 4.30 pm. Entry free

### DECEMBER

- 1 **Seasonal Concert** Dore Gilbert & Sullivan Soc Dore Methodist Church 3pm £4 incl refreshments - 236 2299
- 2 **Festival of Light** St Luke's Hospice 6pm, free entry
- 3 **Handel's Messiah,** Sheffield Bach Choir at Sheffield Cathedral, 7pm
- 7 **Prehistoric Landscape of the Gliding Club** Talk by Helen Ullathorne for Hunter Archaeological Soc Traditional Heritage Museum 7.30pm 230 4243
- 8 **Step out on Froggatt Edge** with the Rangers with lunch 8 miles, 10.30am-2pm. Details from 283 9195
- 9 **Dashers Dash & Rudolf's Ride** - fun run & bike ride in aid of St Luke's Hospice 9am registration - 235 7554
- 9 **Carol Service,** for St Luke's Hospice, Sheffield Cathedral 2.30pm Free entry 236 9911
- 10 **Carol Service** Dore Meth Women's Fellowship 2.30pm
- 10 **Sheffield Bach Choir** at Dore Parish Church. Come and Sing Messiah, 7.30 pm
- 11 **Landscape of the Yorkshire Wolds** Talk by Chria Fenton-Thomas for Hunter Archaeological Soc, Lecture Theatre 9 Arts Tower Sheffield Uni 7.30pm 230 4243
- 11 **Christmas Celebrations.** Dore Methodist Tuesday Group 7.45pm Methodist Church Hall
- 12 **Holly Wreath Making** with the Rangers, Ecclesall Saw Mill 1.30-3pm Details from 283 9195
- 12 **Christmas Party** Dore (Afternoon) Townswomen's Guild 2 pm The Old School, Dore
- 14 & 15 **Christmas Concerts** by Dore Male Voice Choir, Dore Parish Church 7.30pm Tickets from 236 5043
- 15 & 16 **A real magical Christmas** Sheffield Botanical Gardens 3.30 to 8.30pm details: 273 6433
- 27 **Wassail Walk** 5 miles start 10am from the Church Hall on Townhead Road. Hot drinks & mince pies afterwards.

### JANUARY

- 4 **Mineral extraction and the Historic Environment** Talk by Jon Humble for Hunter Archaeological Soc Traditional Heritage Museum 7.30pm 230 4243
- 7 **Resolutions** Talk by Mrs. Margaret Maxfield for Dore Methodist Women's Fellowship 2.30pm
- 8 **Aerial Cropmarks - S & W Yorkshire** Talk by Dave Burke & Ian Roberts for Hunter Archaeological Soc, Lecture Theatre 9 Arts Tower Shef Uni 7.30pm
- 9 **Canyon Country** Talk by Mr Robert Maxwell for Dore (Afternoon) Townswomen's Guild, 2 pm The Old School
- 12 **Step out in Dore & Totley** with the Rangers 7 miles, meet Dore village Green. 10.30am-2pm. 283 9195
- 15 **WORK** our Charity for 2008. Talk by Glynis Philliskirk Dore Methodist Tuesday Group 7.45pm Church Hall
- 21 **Our Minister** Talk by Rev. Garry Dawson-Jones for Dore Methodist Women's Fellowship 2.30pm
- 29 **My Travels.** Talk by Augustin Egurrola for Dore Methodist Tuesday Group 7.45pm Church Hall
- 30 **Al var Aalto** - Scandinavia Hits Europe. Clyde Binfield lecture for Sheffield Society for the Encouragement of Art 2.30pm. Tapton Hall, Shore Lane. Admission free.

### FEBRUARY

- 1 **Germanic Migrants in Romao-British Society** Talk by Cheryl Clay for Hunter Archaeological Soc Traditional Heritage Museum 7.30pm 230 4243
- 4 **A Traveller's Tales** Talk by Mr. Roy Swallow for Dore Methodist Women's Fellowship 2.30pm
- 9 **Step out in Beauchief** with the Rangers 5 miles, 10.30am-2pm. Details from 283 9195
- 12 **Excavations at West Halton** Talk by Dawn Hadley for Hunter Archaeological Soc, Lecture Theatre 9 Arts Tower Shef University 7.30pm 230 4243
- 13 **Rotary Makes A Difference** Talk by Prof Brian Underdown for Dore (Afternoon) Townswomen's Guild 2 pm The Old School
- 18 **Yorkshire Water** Talk for Dore Methodist Women's Fellowship 2.30pm
- 29 **Batchelor Auction,** Bramal Lane Platinum Suite for St Luke's Hospice - call 235 7554

### MARCH

- 5 **Hepworth Gallery, Wakefield** Antonino Vella lecture for Sheffield Society for the Encouragement of Art
- 7 **Earthworks of Derbyshire villages** Talk by Clive Hart for Hunter Archaeological Soc Traditional Heritage Museum 7.30pm 230 4243

### Councillor surgeries

Local councillors are available for consultation in the Dore Village Society room on a regular basis. Conservatives. 4th Saturday of each month 10am to 11am Contact details: telephone 273 4108 Email: anne.smith@sheffield.gov.uk or michael.waters@sheffield.gov.uk

Liberal Democrats: 2nd Saturday in the month from 10.30am to 12 noon. Contact details: telephone 235 2289 Email: keith.hill@sheffield.gov.uk

### CLASSIC WILL SERVICES

Professional Will writers established 1995. Your Local consultant will write

## YOUR WILL

FOR  
ONLY

# £35.00

EACH  
WILL

A TRAINED PROFESSIONAL CONSULTANT WILL VISIT YOU AT A CONVENIENT TIME TO OFFER ADVICE AND TAKE YOUR INSTRUCTIONS. PLEASE CALL ANYTIME TO RECEIVE YOUR FREE INFORMATION PACK OR TO MAKE AN APPOINTMENT

## 0800 068 4797

OTHER CHARGEABLE SERVICES INCLUDE ATTESTATION (HELP WITH WITNESSING YOUR WILLS), PROBATE HELP, SECURE STORAGE, POWERS OF ATTORNEY, ADVANCE DIRECTIVES (LIVING WILLS), TRUSTS FOR PROPERTY & INHERITANCE TAX PLANNING VIA YOUR WILL

Members of the Society of Will Writers

[www.classicwillservices.co.uk](http://www.classicwillservices.co.uk)

*Would you like someone to*

**Type letters? Pay bills?**

**Help record family memories?**

**Sort and file papers? Prepare an inventory?**

**Anything else ???**

*Then you should call*

**Secretarial and**

**Administrative Services**

Swift, efficient, confidential service at your home.

Pay-as-you-go.

**Ring us on 0114 235 0071**