

DORE to DOOR

DORE VILLAGE SOCIETY

NO. 122 SUMMER 2016

ISSN 0965-8912

Here Comes the Summer



Neighbourhood Plan public meeting 25th May – see page 23

DORE VILLAGE SOCIETY – REMINDER ANNUAL GENERAL MEETING

Notice is hereby given that the 51st Annual General Meeting of the Dore Village Society will be held at Dore Methodist Church, High Street, Dore at 19.30 on Wednesday 8th June 2016.

Agenda

1. Apologies for absence.
2. Approval of the minutes of the 50th Annual General Meeting.
3. Trustees' statement.
4. To approve the accounts for the year ended 31st December 2015.
5. To elect up to five committee members.
6. Items for discussion.

Angela Rees - Secretary 26th January 2016

Talk:

Following the meeting there will be a talk by Dore historian and Village Archivist Dorne Coggins on the historic buildings in the village which feature in the Dore Heritage Trail.

AGM Notes:

1. Non members of the Society are welcome to attend the meeting but will not be entitled to vote.
2. The Society's accounts and the Independent Examiner's Report on them will be available for members of the Society on application to the treasurer from 1st May.
3. Five current members of the committee are standing again for re-election.
4. The Society's constitution permits nominations for election to the Executive Committee to be made up to 14 days prior to the meeting. Any nominations, together with a proposer and seconder, will need to be given to the Secretary no later than 25th May. Nomination forms can be obtained from the secretary. A list of those nominated will be placed on the Society's website and noticeboards.

Well Dressing

Spring is here and thoughts turn to summer and this year's Well Dressing which will be on display on the village green from Saturday 2nd July to Sunday 10th July.

Once again the theme this year will be depicting the anniversary of a memorable event.

Gillian Hallas has agreed to take over the organisation of the Well Dressing with a little help from friends, following the stepping down of Linda Williamson who has been involved with, organised or designed a number of Well Dressings for more than thirty years. We would all like to thank Linda for her hard work and commitment to keeping this well received tradition going in Dore (pardon the pun!) and hope that everyone will support Gillian and others to make this year's as successful.

Whilst organisation is well under way and jobs have been allocated, we are still welcoming any other volunteers who would like to be involved. The actual dressing of the Well will start on 27th June in Dore Scout Hut. Even if you don't want to participate, please come along during the week to say hello and see what's involved; it might inspire you for next year!

The chosen charities this time are Transport 17 and supporting Chernobyl Children. All donations will be gratefully received.

Dragon Hunt

We had just under 100 people taking part and everyone seemed to be having a great time. The rain held off which was kind because Saint George would have had extra work polishing his armour ready for the next dragon to slay.

Much appreciated hot drinks afterwards on a cold afternoon for mums and dads, dragon bites and snaps and squash for the boys and girls, and of course the famous dragon's eggs to be munched. Fancy dress outfits gave an extra bit of fun to the occasion.

Our new St George this year prefers to remain anonymous so we all referred to him as Sir Stig!

Thanks of the Doreways Group to all the families who took part, and we hope to see you again next year!

Dorne Coggins



Totley Open Gardens 2016



1pm - 5pm

£4 per person for admission to all gardens

Children under 14 free - but must be accompanied by an adult

All proceeds to local organisations

Programmes from the Ironing Parlour, 170 Baslow Road, S17 4DR;
Mand Made, 193 Baslow Rd, and Totley Library from 2 weeks before the event. On the Open Weekend programmes sold outside The Ironing Parlour and from Cross Scythes pub, Baslow Road.

Enquiries to: Jennie Street on 236 2302 or email jennie@hadish.f9.co.uk

Scarecrow Festival

Yes, we are back again and this year's theme is sport. So, there is a lot of scope for your imagination; any sport or sports personality, real or fictional. Anyone for Quidditch or darts? Ice skating would be a challenge!

As usual, the Scarecrow Festival is timed to link in with Dore Show on 10th September. Entry forms will be available at the Dore Gala on Saturday 9th July and then from Hartleys Fruit Cabin. Applications must be returned by 31st August.

All scarecrows need to be in place by 4pm on Sunday 4th September to enable us to take photographs and prepare for the judging by independent experts who do not live in the village.

We would like everyone who participates to try and keep their scarecrow in place until 4pm on Sunday 11th September as so many visitors to Dore Show want to view the exhibits.

Last year was wonderful and we hope we can attract even more of you to showcase the amazing talent we have in the village.

Doreways Group



Sheffield Motor Show

This year's Sheffield Vulcan Motor Show will be over the weekend of 4th-5th June. Seventy cars from eighteen marques will be on show, with some brand new models.

The event covers Barkers Pool, Fargate, Town Hall Plaza and The Peace Gardens in the city centre, and is open from 9am-5pm on Saturday and 9am-4pm on Sunday. Other entertainments will be staged, and this is also the last weekend of the Star Flyer, in case you haven't been on it yet!

Once again organised by our local Rotarians, Sheffield Vulcan, all proceeds from the event will be donated to support a range of local charities. Further details from www.vulcanrotary.org.uk.

Planning application withdrawn

An application by a prospective purchaser to convert our existing Post Office into residential accommodation after its imminent closure has been withdrawn, following objections from local residents. Fortunately Penny has another buyer and we are pleased that our campaign has not prevented her from selling the premises.

A campaign to oppose the move was organised by DVS and resulted in 80 written objections and over 100 signatures on the petition.

The change of use would have led to the loss of retail space in the village and was contrary to several of the City Council's policies of supporting and promoting the development of local shopping and retail areas. It would also have been contrary to the Government's National Planning Policy Framework.

Our thanks to everyone who supported the campaign, which has avoided for now the precedent of removing retail outlets, leading to an inevitable decline in the commercial viability of the village centre.

Party on the Green

On Sunday 12th June 2016, The Mall in St. James' Park, London, will host its largest ever street party to celebrate The Queen's 90th birthday and her patronage of over 600 charities and organisations. There will also be festivities taking place in parks, streets and gardens throughout the UK and across the Commonwealth.

A ticket for the London event will set you back a chunky £150 a head, but the event's organiser Peter Phillips, the Queen's grandson, is keen for the event to be replicated with street parties up and down the country and across the Commonwealth. Why should Dore miss out? Following an approach from local entrepreneur David Hayes, Dore Village Society has agreed to sponsor our own party right here in the centre of the village.

The Party on The Green will be the ideal opportunity for people of all ages to come together and celebrate with a traditional street party atmosphere. There will be staged live entertainment to suit all ages. Stalls will be selling refreshments for charity, but you're encouraged to bring along a picnic and set yourself up for an afternoon of first class entertainment from 1pm-5pm.

Sunday 12th June 2016 between the hours of 12.30pm and 5pm.

There will be a wonderful celebratory party atmosphere to rival our celebration of Her Majesty's Diamond Jubilee in 2012 - and in Dore it's free for all the family. We hope to see you all there!

David Hayes, Event Co-ordinator 07974 661503

Dore Village Spring Clean

The Doreways Group's first litter pick of 2016 got off to a flying start after snow falling on the previous day! We had a good volunteer response and as ever a lot of litter needing picking up after a winter of strong winds and heavy rain. Several of our volunteer pickers targeted areas that have been looking really bad - Limb Lane and Cross Lane being two areas given extra attention on this spring clean. We have added an extra date for your litter picking diaries this year - Sunday 5th June - when we intend having a massive blitz on the worst area on the village. All suggestions welcome as well as your support of course.

We can't always guarantee sunshine but if you want to join us on Sunday 5th June we start at 11am from Dore Old School and aim to finish our patch by 1pm. Grabbers, gloves and bags provided.

We have received this commendation from Millie Guthrie, Streets Ahead's Education and Community Liaison Officer, who said: "The Doreways community group is making a fantastic contribution to their local area and the wider city, bringing neighbours together in a common cause.



"Despite Streets Ahead's hard work on a daily basis to keep the city clean and litter free, we do know that unfortunately litter is still dropped on the streets. We all have a part to play in keeping our city clean and our Clean Sheffield anti-litter campaign aims to tackle this. We are always keen to work with committed groups across the city that are passionate about helping to keep the city clean."

So come along and help to make Dore sparkle.

New Thursday Film Club and Library Lottery

It has been a very busy start to the year at Totley Library. We have been planning improvements we want to make this year, working with Sheffield City Council to secure a small supply of new books for the library and also looking into whether we can put some of the books we get donated into stock for members to borrow. Our main priority now is fundraising. So far we have been very fortunate to get a grant from the Council to cover the library running costs, but this runs out in March 2017. As the library costs over £24,000 a year to run we are lobbying the Council to see whether they can provide further funding. However, with the current austerity cuts we may not receive anything at all so we are looking at new ways to raise funds for the library. We need more volunteers to help us with fundraising, especially somebody who has experience of writing grant applications to charities and funding bodies.



To help keep Totley Library open we're launching a new monthly Totley Library Lottery. By playing in this local lottery, you can help support the library and, if your luck's in, you can win cash prizes! Each month, 25% of all income will be allocated as the prize fund. All of the remaining 75% will go straight to library funds. The first draw will be on Wednesday 6th July and you can find an entry form included with this edition of Dore to Door. If you would like to enter please complete the form and return it to Totley Library, Dore Village Store or Totley Rise Post Office. Alternatively, you can enter via our website www.totleycric.org.uk

We are very pleased that our community cinema has proved so popular. Launched in October last year, Totley Library Cinema can seat up to fifty adults and children. Every month we show two films, one for families on a Sunday afternoon and one for adults on a Friday night. So far we have shown 12 films, all of which have been very popular. We are now planning to buy more chairs so we can increase capacity!

Screenings are free for library members, whilst everyone is encouraged to buy a raffle ticket to support our fundraising efforts and refreshments/ice cream are also on sale. To find out what films are on, join our monthly email newsletter via our website or pop into the library. Unfortunately we cannot advertise which films we are screening due to the restrictions of our licence.

We are now extending the Community Cinema by launching a new Thursday Film Club, showing films on the last Thursday of the month at 3.45pm to elderly, housebound or lonely residents of Totley, Bradway and Dore. The first screening was on Thursday 28th April. Aimed at over 65's, we can seat up to forty people. We offer limited transport to and from the club for those with walking difficulties.

The Thursday Film Club has been set up with support of the People's Postcode Lottery to help older people maintain their independence. In the first year Thursday Film Club screenings will be free of charge for library members, including a hot drink and biscuits. There is a small charge for transport. Totley Library has a toilet available but unfortunately this does not have disabled access. To join the new Thursday Film Club visit Totley Library or phone 236 3971.

Natasha Watkinson

Dore Scout and Guide Gala – 2pm Saturday 9th July: The Recreation Ground, Townhead Road

Dore Gala is a wonderful afternoon for everyone in the village. This year we are delighted to welcome four new community groups:

- Dore School of Performance Arts (who will be performing in the arena)
- Christ Church Bell Ringers (who will let you have a go at ringing a mobile belfry)
- Totley Library (who will be reading stories to small children)
- Shine Youth Choir (who will be performing in the arena)

These are all free activities. We are also pleased to welcome Spider Monkey, a 24ft high climbing wall. We have been trying to get a climbing wall for some years and are delighted to provide this new challenge!

The new activities in 2015 were all successful and we welcome back

- Donkey Rides from Realdonkeys (suppliers to Blackpool Beach)
- Classic Car display arranged by BullsEye Car Parts
- Soft Tennis manned by Abbeydale Tennis Club (a free event)
- Groovy Grub Fun
- Duck Racing and Golf Putting

Further details will be in the Gala and Festival Programme which will be distributed to every home in Dore towards the end of June. We are welcoming back all of our other 2015 attractions so Gala 2016 will build on the success of recent Galas.

We are pleased to welcome Haybrooks Estate Agents as our 2016 Supporter of Dore Gala. Haybrooks nearest office is at Bannercross and the local manager, Jack Lucas, lives a stone's throw away from the Rec. The support of Haybrooks allows us to subsidise certain activities and we are very grateful for it.

Four longstanding members of the Gala Committee, Dale Andrews, Jane Pedder, Norman West and Chris Woodhouse are retiring after Gala 2016 and we are very grateful for their wonderful contribution over many years. We welcome Bev Bones, John Eastwood and David Needham to the committee but we are still seeking new committee members. It's great fun to be involved with organising Gala. We have an enthusiastic committee and anyone who may be interested should contact me on 07753 829771 or 236 6603 or chrishjones23@gmail.com.

Climate change is affecting us all and many of you may recall that we have had to cancel Gala due to flooding in the past. Since then drainage on the Rec has been improved. Nevertheless, as last year, the Committee have set-up a Plan B so that Gala need never be cancelled due to rain. We hope will never need to implement this plan but, if we have to, Gala will take place in the centre of the village.

In addition to the numerous members and leaders of the Scout and Guides groups, who do a huge amount behind the scenes to make Gala a success, we are constantly seeking new helpers for Gala. We are delighted to again welcome members of the Vulcan Rotary Club who will man a Medley Stall. Over 250 adults help during Gala Day. Jobs range from setting-up, manning stalls and taking down. If you would like to be involved in an event that is a key fixture in the village year and great fun, then please contact Chris Jones.

As usual the toy, book and white elephant stalls need a supply of good second hand toys, books and bric-a-brac. If you have any items please bring them to the Scout Hut before Wednesday 6 July. Alternatively, contact me and I will arrange collection of bulky items. There is also a book box in the hairdressers Vivid in the High Street where you can drop off books at any time up in the three weeks up to Gala Day.

We are very grateful to the many Friends of Dore Gala and all our programme advertisers. These are all local businesses and I urge you all to support them during the year.

I look forward to seeing many of you on Saturday 9th July.

Chris Jones, Chair, Dore Gala Committee



Chairman's Column

Wednesday 8th June sees the DVS AGM when we report on the activities of the previous year, submit our accounts for scrutiny and elect new committee members. The agenda for the meeting, together with details of who is standing for election to the committee, will be on our noticeboards and website, and available in the DVS office during our normal opening hours, from about 27th May. The annual accounts will also be available on the website and in the DVS office.

This year we will be entertained after the AGM by Dorne Coggins who will be talking about the historic buildings of Dore. This is an opportunity to learn more about this aspect of the village and Dorne will take us on a historic journey recounting some interesting tales behind places that we regularly walk or drive past and of which we may know very little.

If you want to stand for election to the committee nomination forms can be obtained from angela.rees@dorevillage.co.uk or 0114 236 3487 and have to be submitted to Angela by Thursday 26th May.

One of our longest running campaigns has been to try and get the Highways Department of the City Council to address the problem of car parking in the village centre. If you've lived here long enough you may remember that we held an extensive consultation with Dore residents six years ago which resulted in a detailed report and

a set of recommendations which we asked the Council to discuss with us. Well, after repeated prompting over the years, we met with the Highways Department last year and agreed a plan of action, and a consultation is now being held to seek opinions on the proposals. You can read more about this elsewhere in this issue on pages 8 and 9, and on the DVS website (www.dorevillage.co.uk/carparking). These proposals will, inevitably, raise concerns as well as receiving support. It is important to stress that the proposals are for consultation and comments are therefore invited from everyone. We want to work with people who have concerns to try and address these, and from people who support the proposals so that we can understand the level of concerns and support. Please respond by getting in touch with the Traffic Regulations Group of the City Council:

Email: Traffic.regs@sheffield.gov.uk

Letter: Dore Parking Scheme, Traffic Regulations Group, Sheffield City Council, Howden House, Union Street, Sheffield S1 2SH

Telephone: 0114 273 6157 or 273 6086.

You can get in touch with me as well if you wish.

Our thanks go to our local Councillors who have supported us vigorously throughout this campaign and who facilitated the meeting last year which led to the current position.

In February I issued a plea for help with the various events which happen throughout the year and I'm pleased to say that we had a good response to some of these. However, we haven't had volunteers in a couple of crucial categories and this is putting these events at risk of not happening this year. Of particular concern is help with moving display boards for the Dore Show. We really need help here and unless we get some volunteers we might not be able to transport these items. We also need help with dismantling gazebos and transporting items back to our storage area as well as clearing the exhibition

rooms. We need people to help with serving refreshments and with selling raffle tickets, and with clearing up and the break down after the Show on Saturday evening from 5pm to 7:30pm. If you can help with any of these please let me know by calling in at the DVS office in the Old School between 10:30am and midday on Fridays or on the first Saturday of any month, or email or phone me.

In the February issue I wrote an article about proposals to develop a community IT resource in Dore and asked for expressions of interest. Only four people responded and so it looks as if there is insufficient demand for this. Consequently we won't be pursuing this any further.

Watch out for details of our next major event: a party on the village green on Sunday 12th June to celebrate the Queen's 90th birthday. Once again David Hayes, the intrepid and energetic village events organiser, came up with the idea and we are pleased to be supporting him by meeting the costs. This event will be free so bring along your chairs and settle in for an afternoon of fun and entertainment.

There has been a good response to requests for people to renew their DVS membership and we currently have just over 800 paid-up members. The membership fee is used to cover our day-to-day running costs and we need just over 1,000 members in order to achieve this so, if you haven't yet renewed for this year (or if you have never joined but feel that what we do for the community is worthwhile) please renew or join. Membership forms were in the November issue of Dore to Door but can also be obtained by calling in at the DVS office, or from the membership secretary, Kath Lawrence (kath.lawrence@dorevillage.co.uk or 0114 236 2758), or by downloading from the DVS website (www.dorevillage.co.uk).

Keith Shaw

Professional Cleaning by
NEW PIN CLEAN LTD
 Daily • Weekly • Fortnightly • Monthly

- Spring Clean • House Moves
- Full Ironing Service • One Offs
- Fully Insured • Free Quotations

Our well trained staff will clean your home thoroughly. We offer a customised service to suit your requirements

**Sheffield's premier
 domestic cleaning company**

0114 236 2943

Lower Ground Floor, 77 Baslow Road, Sheffield S17 4DP

Contact Dore to Door:
editor@doretodoor.co.uk
 Tel: 07850 221048
 Post: Dore to Door,
 138 Totley Brook Road, S17 3QU
(please note this is a new address)
Speak to the editor personally in the Village Society Office in the Old School any Friday morning 10am-noon

Deadlines for the Autumn edition:
 Editorial – July 25
 Advertising – July 22: phone 07583 173 489 or email advertising@doretodoor.co.uk
 Autumn publication date: August 19

JUST WAITING FOR YOUR NEW YEAR'S RESOLUTION TO HAPPEN ?

LOSE WEIGHT ASK ABOUT OUR **3 DAY TRIAL !** **LOOK GREAT AND FEEL HEALTHY!**

Why not take the guesswork out of your 2016 Shape Change - Now ?

With our Tanita Body Monitor, 3 Day Trial & Committed Support (it's much more fun than it sounds !)

TEXT START to 07720 394 597

Andrew Haigh Decorator

Professional interior, exterior, decorating and wallpaper hanging.

Also: coving application, rag rolling, French polishing and many more decorating tasks undertaken

Clean tidy and completely professional

For a free competitive quote call now on 0797 452 9901



GWS



Technology Solutions

PC Problems/ Repairs/ Servicing No Job Too Small
Wireless & Internet Setup PC Setup/Data Transfer
New PC's/ Laptops & Upgrades Safe PC Disposal
Reconditioned PC's & Laptops available Tuition
Software/Hardware supplied & installed
For All Your PC Needs

Guy Senior

Phone: 0114 2352662 Mobile: 07890030453

Email: guy@gwstech.co.uk

Web: www.gwstech.co.uk

GWS, 5 Conalan Avenue, Bradway, Sheffield S17 4PG



HELEN O'GRADY
DRAMA ACADEMY

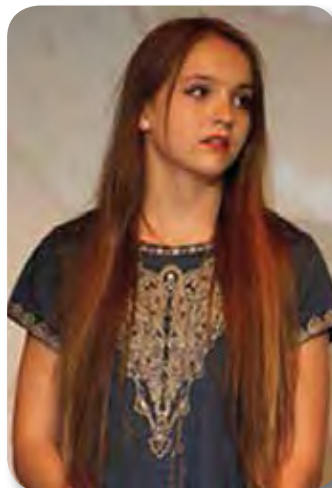
Dore classes now recruiting

Saturdays

Age 5-11: 2pm - 3pm

Age 11-18: 3pm - 4pm

Dore Hall,
Townhead Road



**Confidence!
Creativity!
Communication!**

Primary & Youth Theatre

Helen O'Grady Drama Academy

Call 0114 2555910

www.helenogradysheffield.co.uk

Run by Professional actors CRB/DBS checked

Home Instead SENIOR CARE Sheffield's Most Trusted Home Care Provider



Our Services Include:

- Companionship
- Home Help
- Respite Care
- Medication Reminders
- Shopping Errands, Outings & Appointments
- Personal Care
- Disability Care
- Local Transport
- Up to 24 Hour Care

What makes us number one?

We focus on providing care of the highest quality to our lovely clients in Sheffield

Calls at a time that suit you with a person you know!

Call: 0114 250 7709

www.homeinstead.co.uk/sheffieldsouth
6 Shirley House, Poulter Lane, Sheffield, S11 8YL



Horizon Electrical

Faults, Rewires, Sockets, Lights, Cooker Points, Electrical Showers, Phone Points, Security Lights

No job too small

Fully qualified with friendly advice

Ring Topley 236 4364 or mobile 07772 483154

**Autumn and winter tidies.
Regular garden maintenance.
Hedge cutting.
Tree surgery.**

0114 258 9290
james@jabird.co.uk
www.jabird.co.uk

1-5 Buttermere Road
Sheffield S7 2AX



James, UB40 to perform at Music in the Gardens

Supergroup James is to headline this year's Music in the Gardens, the Sheffield concert series run by Rotary Clubs from South Yorkshire and north-east Derbyshire.

James have produced a string of massive hits like "Sit Down", "Come Home" and "Laid". They are currently riding high in the charts with their new album "Girl at the End of The World" and their new single "Nothing But Love".

In a huge year for James, their appearance in Sheffield's Botanical Gardens on Thursday 30th June 2016 will be a rare chance to catch them performing in such an intimate outdoor venue.

Music in the Gardens started life 12 years ago as one night of jazz in a marquee and has grown into a major fundraiser for local charities, raising over £250,000 since it began. Totally run and operated by Rotarians, Music in the Gardens has become a staple in the Sheffield Arts calendar.

"The appearance of James is a major deal for Music in the Gardens", says Andrew Bates, one of MitG organisers, "We have staged some great acts over the years but James has to be our best catch to date. We will ensure the gig is remembered for years to come as a classic event".

On Friday 1st July, another big group takes to the Botanical Garden's stage. The Feeling had the accolade of being one of the most played groups on radio with hits such as "Never Be Lonely", "Sewn" And "Fill My Little World". Their instantly recognisable hits are certain crowd-pleasers and their pop-rock melodic style is perfect for the Music in the Gardens four-night concert series.

Saturday 2nd July has a band so well-known they are part of the soundtrack to most popular music fans. UB40, featuring five of the original members of the classic 80s lineup will chill the gardens to "Red Red Wine", "Kingston Town" and many more classic tracks. Selling some 70 million albums worldwide, UB40 are another must see act at this year's huge lineup for the Music in the Gardens.

No music in the Gardens would be complete without the Last Night in the Gardens concert featuring The Unite the Union Brass Band and The Sheffield Philharmonic Orchestra. Sunday 3rd July will reverberate to stirring brass and strings with a good old flag waving sing along with one of Sheffield's most spectacular fireworks displays to finish off the four days of top-drawer concerts.

More details from <http://www.musicinthegardens.co.uk>; tickets from <http://www.sivtickets.com>

Charity Skydive

Whirlow Hall Farm Trust are organising a charity skydive from 15,000 feet to raise funds for the farm. Anyone can take part in the jump, and if you raise enough sponsorship you can jump for free!

The group jump will be on Saturday 9th. July (Gala Day) so if you're one of those who prefer *not* to be around the village during Gala, why not consider it?

Other jump dates are available. For a free information pack please call Sarah on 0114 235 2678 or email eventsenquiries@whirlowhallfarm.org.



A resident tries a new approach to consultation with no better result than other methods. Lamp posts on either side of this one are in fact several inches from the boundary wall. Spotted on Totley Brook Road by Tim Treffry.

Dore Village Society

Registered Charity No. 1017051

The Society is the designated Neighbourhood Forum for the Dore Area, with responsibility for preparing a Neighbourhood Plan for Dore. The Society also aims to foster the protection and enhancement of the local environment, amenities and facilities within Dore, to encourage a spirit of community and to record its historic development.

Membership of the Society is open to all residents of Dore, those who work in Dore and elected local council members for Dore. Membership is also open to Corporate Members representing societies, associations, educational institutions and businesses in Dore.

Current membership rates are £6 pa for individuals and £35 for corporate members.

Telephone numbers of Committee Members are below; for email, please write to firstname.surname@dorevillage.co.uk, e.g. keith.shaw@dorevillage.co.uk

Address for correspondence:

The Old Barn, Nab Farm, 44 Savage Lane, Dore, S17 3GW

Committee Members:

Chairman	
Keith Shaw	236 3598
Deputy Chairman	
David Bearpark	236 9100
Secretary	
Angela Rees	236 3487
Treasurer	
Colin Robinson	236 6592
Planning	
David Crosby	453 9615
Environment	
Dawn Biram	235 6907
Christopher Pennell	235 1568

Archives

Dorne Coggins 327 1054

Membership

Kath Lawrence 236 2758

Website & Notice Boards

Keith Shaw 236 3598

Dore to Door

John Eastwood 07850 221048

Publicity

Andy Pack 236 2777

Community Activities

Roger Viner 235 6625

Philip Howes 236 9156

Christina Stark 236 8877

Published by Dore Village Society



Opinions expressed in letters, articles and services offered by advertisers are not necessarily endorsed by the publishers.

No part of Dore to Door may be reproduced in full or part without prior permission of the Editor on behalf of the publishers.

The Editor retains the right to edit or amend any letter or article sent in for publication.

In view of the possibility of human error by the authors, editors or publishers of the material contained herein, neither the publisher nor any other party involved in the preparation of this material warrants that the information contained herein is in every respect accurate or complete, and they are not responsible for any errors or omissions or for the results obtained from the use of such.

Readers are encouraged to confirm the information contained with other sources.

Copyright Dore Village Society 2016

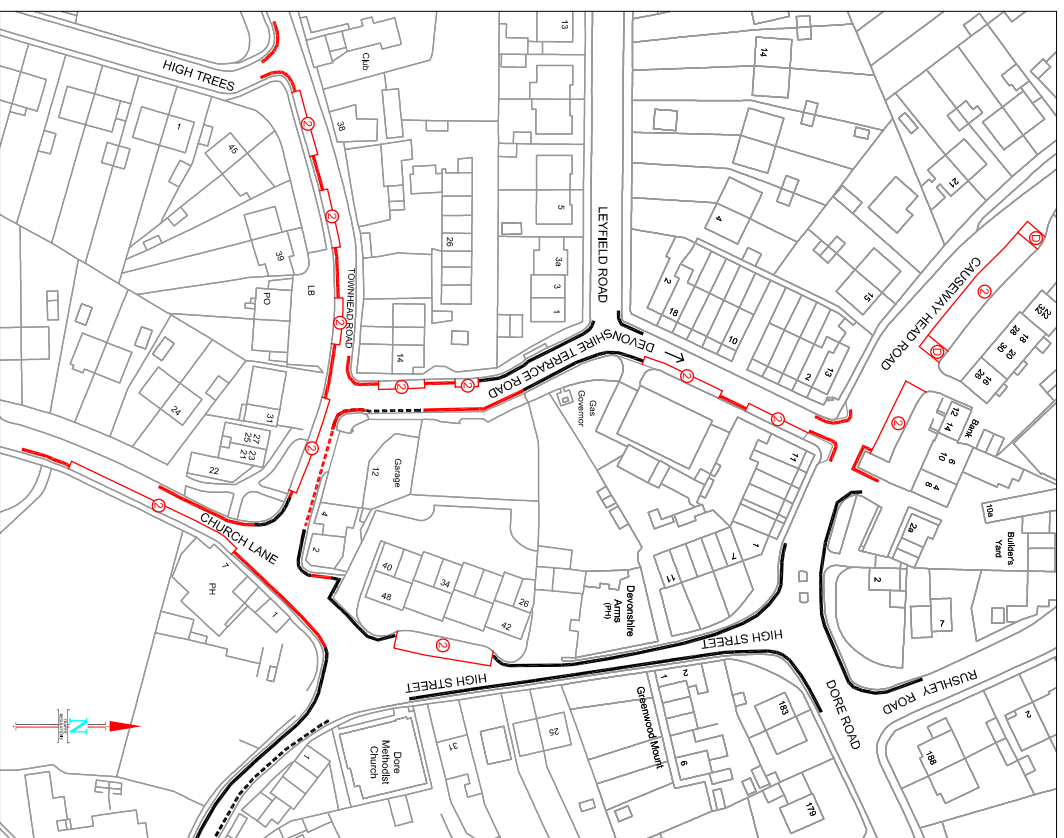
Printed by The Magazine Printing Co.

www.magprint.co.uk

EXISTING WAITING RESTRICTIONS IN DORE



PROPOSED WAITING RESTRICTIONS IN DORE



KEY	
	EXISTING DOUBLE YELLOW LINE NO WAITING AT ANY TIME
	EXISTING SINGLE YELLOW LINE NO WAITING MON-SAT 8AM-6:30PM
	EXISTING SINGLE YELLOW LINE NO WAITING 8-9:30AM AND 5-11PM
	EXISTING ADVISORY 'H1' MARKING
	PROPOSED DOUBLE YELLOW LINE NO WAITING AT ANY TIME RESTRICTION
	PROPOSED SINGLE YELLOW LINE NO WAITING MON-SAT 8AM-6:30PM
	PROPOSED SINGLE YELLOW LINE NO WAITING MON-SAT 8AM-5:15PM
	PROPOSED LIMITED WAITING PARKING BAY FOR UP TO 2 HOURS NO RETURN FOR 2 HOURS
	PROPOSED DISABLED PARKING BAYS EXISTING ONE WAY TRAFFIC

TRANSPORT TRAFFIC & PARKING SERVICES DIVISION

TRAFFIC REGULATIONS
5th FLOOR, HOWDEN HOUSE
1, UNION STREET, SHEFFIELD, S1 2SH
E-mail: Traffic.Reg@Sheffield.gov.uk
Regeneration and Development Services
Director: David Caldwell, RTPI

A Service Area of the Directorate of Place
Sheffield City Council

- Do not scale from this drawing
- Any errors/omissions to be reported immediately
- If in doubt, ask
- This drawing is based upon Ordnance Survey material with the permission of Ordnance Survey on behalf of the Controller of Her Majesty's Stationery Office. © Crown Copyright. Unauthorised reproduction infringes Crown copyright and may lead to prosecution or civil proceedings. 100018816. 2016

DRAWN: NC
22/03/16
CHECKED:

Client: SHEFFIELD CITY COUNCIL

Scheme: DORE PARKING SCHEME

Drawing Title: PROPOSED TRAFFIC REGULATION ORDER
Traffic Regulations Drawing

Drawing No. TR 20 06 DORE
Scale: 1/1250
A3



TRAFFIC REGULATIONS

Proposed Parking Scheme – Dore

Background

In 2012 The Dore Village Society (DVS) undertook several consultations which identified a desire to manage parking to ensure the long term commercial viability of the village centre. An independent consultant was tasked with assessing the consultation results, chairing a public meeting and presenting a report to the DVS.

That report highlighted solutions to the parking problems facing the village centre and businesses, and subsequently Sheffield City Council have been asked by the DVS to develop the preferred option which is a Parking Scheme for the centre of Dore. DVS have secured funding for this work and the consultation to be undertaken.

Proposed Parking Scheme

A parking scheme has been developed and is now being presented to the DVS, residents and businesses within Dore giving an opportunity to ask questions, provide feedback and comments.

Key Aims

The key aim of the parking scheme is to improve the commercial viability of the village centre by:

- Making it easier for people to park close to the shops/businesses by providing short term parking.
- Creating additional parking spaces where possible.
- Improving access for local buses and pedestrians.

Proposals

The scheme being proposed will include:

- 60 short term parking spaces with a maximum stay of 2 hours. This will prevent long term parking and create a turnover of spaces to benefit shoppers and visitors to local businesses.
- Two designated disabled parking bays near the shops. In addition, blue badge holders will be able to park in any of the short term parking spaces, without having to adhere to the 2 hour maximum stay, and can park on yellow lines for up to 3 hours provided that they do not cause problems for other road users.
- Waiting restrictions at junctions to improve access and visibility for all road users.
- Waiting restrictions to protect business and residential accesses to prevent obstruction
- The removal of a single yellow line restriction on Church Lane to provide further parking near to the village centre.
- Some unrestricted parking within the village centre to provide opportunity for long term parking.
- The Dore Club car park on Townhead Road will be available for long term parking which is only a short walk from the village centre at a cost of £1 per day.

Traffic Regulation Order Consultation

To enable the waiting restrictions within the parking scheme to be introduced it is necessary to make a Traffic Regulation Order. This involves formally advertising details of the proposals and allowing residents, businesses and other interested parties an opportunity to comment and/or object. This formal consultation period will run from 6th May 2016 to 27th May 2016.

The plan opposite shows the extent of the parking scheme and the waiting restrictions that are being considered. The plan and these details can also be viewed at www.dorevillage.co.uk.

If you wish to formally object to what is being proposed then, to comply with the provisions of the Road Traffic Regulation Act 1984, you must write or email to the addresses below, giving the grounds for your objection by the 27th May 2016. During this consultation period comments in favour of the proposals are also welcomed.

This consultation is your chance to ask questions and/or give your view on what is being proposed. There are several ways to

get in touch:

- Email: Traffic.regs@sheffield.gov.uk
- Letter: Dore Parking Scheme, Traffic Regulations Group, Sheffield City Council, Howden House, Union Street, Sheffield S1 2SH
- Telephone: 0114 273 6157 or 273 6086

What happens next?

When the consultation period has ended then all feedback received will be considered to help give a clear understanding of different views on the scheme as a whole or specific aspects of it.

If there are formal objections received then the Cabinet Member with responsibility for highway matters will consider them and make a decision on how to proceed.

If you have any questions about the proposals or the Traffic Regulation Order process then please contact us.

Summary of terms

Short Term Parking Bays

These restrict parking to a maximum of 2 hours with no return for 2 hours on Mondays to Saturdays 8am to 6.30pm. There is no charge. The bays would be enforceable by the City Councils Civil Enforcement Officers who can issue Penalty Charge Notices for any vehicle staying over 2 hours or returning to the bay before 2 hours has lapsed. The normal exemptions apply for disabled blue badge holders in that they can park without the time restriction if they display the blue badge clearly.

Disabled parking bays

These are parking spaces restricted to vehicles displaying a valid blue badge and have no time limit.

Double yellow lines

Parking prohibited at all times. Legitimate loading/servicing is permitted. Vehicles displaying a valid blue badge may park for up to 3 hours provided that they do not cause problems for other road users.

Single yellow lines

Parking is prohibited Monday to Saturday 8am-6.30pm. Legitimate loading/servicing is permitted. Vehicles displaying a valid blue badge may park for up to 3 hours provided that they do not cause problems for other road users. Parking is permitted overnight and on Sundays.

Letter to the Editor

Dear Editor,

I was interested in the article by Ken Organ (Spring 2016) about his father's sad death in 1944 over Tiree. My father's family come from the island and in fact my brother was born on the island and as an infant I spent many months there during the war.

The air accident might seem not only tragic but also perhaps a bit careless with crews obviously experienced in flying in all weather. However, there may be an underlying explanation why there seems to have been a lack of communication. Not only was the airfield used for weather reconnaissance but also every troop ship coming up the Clyde was secretly escorted by an aircraft from Tiree. My father was MO troops on one occasion so a person of significant authority on board.

A Canadian airman told my mother he would be home the next day as he had just escorted the ship. My father insisted that there was no aircraft escort.

This shows how secret were these missions and presumably were conducted with radio silence. I guess F.O. K W Organ might have been on radio silence in the vicinity of the air base. Tiree was a busy air base and in spite of this considerable activity it was never discovered by the enemy.

Yours,

Ewen Mackinnon



SJT
BUILDING
& JOINERY



HAS
Accredited Contractor
www.has.co.uk



FMB
The sign of
building quality




Loft conversions / Attic conversions
Property Extensions
Garage conversions
Renovation
Kitchens & bathrooms
Shopfitting & office interiors


SJT Building & Joinery are professionals within their field. All their work is carried out to the highest standard with experienced qualified craftsmen. SJT will ensure that your project whatever the size is completed to your 100% satisfaction.

Tel: 01142 219067
Tel: 07951750795
contact@sjtbuilderandjoiner.com
www.sjtbuilderandjoiner.com

MELLORS & KIRK

VALUATION DAY


Dore
 Dore Parish Church Hall
 Townhead Road
 Dore S17 3GA
Monday
6th June
2016
 1.30 - 3.30pm



Free specialist auction valuations of antiques, collectables, jewellery & medals.

For further information please contact nkirk@mellorsandkirk.com or call : 0115 979 0000 www.mellorsandkirk.com

FINE ART AUCTIONEERS
THE AUCTION HOUSE



RICS

FOUNDED 1993
GREGORY STREET NOTTINGHAM NG7 2NL

TOTLEY PRIVATE HIRE

EXECUTIVE CAR TRAVEL



AIRPORTS AND LONG DISTANCE

PROP - PAUL SOUTH
24HR SERVICE

Tel: **0114 2839692**
 Mobile: **07974 355528**
 Email: PAUL.SOUTH1@TESCO.NET



MARTYN FOSTER ELECTRICAL

DOMESTIC, INDUSTRIAL AND COMMERCIAL INSTALLATIONS

All work
Certified,
Insured and
Guaranteed

We provide a wide range of high quality electrical services and pride ourselves in our reliability, diligence, clean and tidy approach

Please call us to discuss your requirements
0114 2589201 0789 1809112

info@martynfosterelectrical.co.uk





Tristan Swain

Garden Services and Maintenance
Established 1984

Unit C4 Sheaf Bank Business Park
Prospect Road Heeley
Sheffield S2 3EN
Tel/Fax: 0114 255 4689
Mobile: 07831 802 539
Email: tristan@tristanswain.co.uk




www.tristanswain.co.uk Public Liability Insurance Waste Transfer Licence






TUFF ROOFING & BALUSTRADES
 TEL: 0114 2899286 www.tuff-roofing.co.uk

THE LEADER IN SEAMLESS FLAT ROOFING & BALUSTRADES

Shape up for Dore Show

This year's Dore Show will be on Saturday 10th September. Quite a long way off yet, but if you're hoping to grow, craft or paint your

Vegetable and Fruit Section

- 1 6 pods of runner beans
- 2 3 onions, dressed
- 3 3 onions 8oz or less
- 4 3 leeks
- 5 1 vegetable marrow
- 6 4 potatoes - one variety
- 7 4 beetroot
- 8 1 cucumber
- 9 5 tomatoes on a plate - one variety
- 10 8 cherry tomatoes
- 11 Any other vegetable
- 12 A plate of blackberries
- 13 4 dessert apples
- 14 4 cooking apples
- 15 A tray of mixed vegetables including salad
- 16 The heaviest marrow
- 17 Any other fruit (5 items of the same fruit)
- 18 A bunch of mixed herbs in a jam jar
- 19 A pumpkin or squash
- 20 Hothouse fruit, one item
- 21 3 courgettes

Flower Section (vases will be provided)

- 22 A vase of five dahlias arranged to effect
- 23 3 gladioli
- 24 An orchid in flower in a pot
- 25 3 roses, any container
- 26 1 foliage plant in a pot (maximum pot size 12")
- 27 1 flowering plant in a pot (maximum pot size 12")
- 28 A vase of mixed flowers
- 29 A vase of sweet peas
- 30 A floral arrangement not higher than 40cms and wider than 40cms (the winner will be awarded the Wyvern Rose bowl)

Wine Section

These must be home-made. Wine should be in clear corked bottles with plain labels

- 45 A bottle of dry red wine
- 46 A bottle of sweet red wine
- 47 A bottle of dry white wine

way to a prize this year then you'll need plenty of time to plan. Below are a selection of this year's categories; as usual the full list, together with rules and instructions for newcomers, will appear in our August issue.

- 48 A bottle of sweet white wine
- 49 A bottle of any non-alcoholic beverage

Textile & Hand Craft Section

- 50 A handmade decorative cushion
- 51 Tapestry or embroidery or cross-stitch from a kit or chart
- 52 An item of fabric clothing
- 53 A handmade knitted item
- 54 Any soft toy
- 55 A craft exhibit in wood
- 56 A craft exhibit in any other material
- 57 A crocheted item
- 58 A quilted item

Visual Arts Section (minimum age 15)

- 59 A water colour painting - landscape
- 60 A water colour painting - any other subject
- 61 A painting in any other medium or mixed media
- 62 A monochrome drawing - any medium

Photography Section

Photographs must be at least 7" x 5" and no more than 12" x 8" in size. Photographs should be unframed but may be mounted on plain card

- 63 A black & white photograph "Sport"
- 64 A colour photograph - "My Holiday",
- 65 A colour photograph - "A Portrait", animal or human
- 66 A colour photograph - "The Natural World"

Junior Section (up to and including age 14)

Entries must be children's own work and show their age. Classes 68, 69 and 70 must not be more than A3 in size.

- 67 A vegetable animal (age 11 and under)
- 68 A painting or drawing of any subject (age 5 and under)
- 69 A drawing of any subject (age 6 to 11)
- 70 A painting of any subject (age 6 to 11)
- 71 A craft exhibit in any medium (age 9 to 11)
- 72 An art or craft exhibit in any medium (age 12 to 14)
- 73 A colour photograph "My Favourite Animal".
Photographs must be at least 7" x 5" and no more than 12" x 8" in size. Photographs should be unframed but may be mounted on plain card
- 74 4 homemade cupcakes, to be judged on decoration only

Policing

Hello! As usual with the best laid plans I actually ended up taking on the area in February and I'll start by saying how nice it is to have met so many people who've told me they've just been reading about me in this magazine! I'm currently getting to know the area which is much the same as I remember from my youth but with a few significant changes here and there. I have managed to make contact with some of your local Neighbourhood Watch contacts and I am providing them with weekly updates on crimes in the area. If you would be interested in setting up a watch on your street let me know and I'll pass on your details to the local coordinators. I'm in the process of setting up drop ins and hope to have some news on dates and venues within the next issue. Dates will also be published on the Sheffield South West LPT Facebook page if you follow us there.

As I write it's raining and cold but hopefully when you read this Spring will be here! Your thoughts may be turning towards the garden, unfortunately some burglars have already been thinking about it too. We've had a couple of shed and garage break ins recently in the Dore Road and Totley Brook areas, please check your sheds are securely locked when you leave them, padlocks are not breakable or able to be sawn through and screw hinges not exposed. If you make your shed difficult to break into, they'll go somewhere easier. We've also had a couple of burglaries in the Totley Brook areas which have involved breaking through patio doors or windows or removing old style Eurolocks. Please check your locks making sure you have ABS locks fitted and let neighbours know if you are going away. Leave the TV or radio on if you are out and always try and use timers on your lights varying them into different rooms where possible.



As usual I'm happy to be contacted if you have any issues or concerns on email adrian.tolson@southyorks.pnn.police.uk or on my work phone below which has a message facility if I'm not on duty.

Adrian

PCSO 8136 Adrian Tolson
Dore, Totley and Bradway Area Contact
Sheffield SW LPT
Woodseats Police Station
07787 881945



Bluebells in Ecclesall Woods.
Photograph by Mrs J Derbyshire, Dore.

Keeping Sheffield beautiful

**Mr Rubble
Skip Hire**

☎ 236 6222

www.mrrubble.co.uk

Ringinglow Archery
www.ringinglow-archery.co.uk
FUN, CHALLENGING, REWARDING... TRY IT!

Archery Experiences
Group & Party Bookings
Archery for Juniors 8-16yrs
Regular Shoots & Competitions
Air Gun & Crossbow Experiences
Axe & Knife Throwing
All Weather Facilities
Gift Vouchers

For Bookings & Enquiries
ringinglowarchery@gmail.com or 0114 230 3347

Smeltings Farm Riding & Archery Centre, Ringinglow Road, Sheffield S11 7TD.

PhysioFOCUS
at Totley Rise Dental Practice
85 Baslow Road,
Sheffield, S17 4DP

Physiotherapy treatment available for:

- Back and neck pain
- Sports injuries
- Sprains and strains
- Joint and muscle pain
- Arthritic pain
- Whiplash
- Repetitive strain injury
- Headaches

Appointments: 0114 2360333

Also available:

- Pilates classes
- Pilates 1-2-1
- Golf Fitness Screening
(as used by consultants to UK,
European and Australian PGAs)

For more information please call:
Emer on: 07792 422909
Rachel on: 07956 908454

Nigel Watson ADI
Driver Trainer for all ages
Under 17's courses available

Home: 0114 236 4778 Mobile: 07506 537681
E-Mail: nigelmwatson@googlemail.com

S17 Building and Joinery

24 Causeway Head Road, Dore
Sheffield, S17 3DT
01142 356751 or 07932 389241
Jon Watson
Over 25 years experience
www.s17buildingandjoinery.com

Near calamity at Dore & Totley Station, 1907

The Rail Safety & Standards Board recently announced that 2015 was the eighth year in a row when no passenger or railway worker was killed in a train accident. This is pretty remarkable with 1.65 billion railway passenger journeys made in Britain during 2015.

Locally, tragedy on the railway at Dore and Totley was narrowly avoided on the 9th October 1907. At the time, Dore and Totley station had four lines, two fast and two slow, and four platforms. These were the one and only platform 1 that we still have today, the central 36 feet wide platforms 2 and 3, and the main line platform 4 in the London direction which backed onto Ladies' Spring Wood. Platforms 2, 3 and 4 were all reached by the footbridge which once led from platform 1. I have, incidentally, been asked more than once, "Which platform for Sheffield" at our single platform station!

On the fateful day at Dore and Totley, the 193-ton train involved consisted of two horsebox vehicles with one horse in each, and seven passenger coaches. It was the 1.30 p.m. express train from Sheffield to Bristol hauled by two Midland Railway locomotives. The locomotives together weighed 153 tons. It was 1.47 p.m. and the train was approaching the north end of the station. At this point it was switching at the junction from the fast line to the slow line and had the clear signals to do so. The maximum speed allowed to move from one line to the other here was 20 m.p.h. Signalman Samuel Kent at Dore and Totley Station Junction signal box saw what happened. The train passed him with the leading (pilot) engine on the rails, but the second (train) engine off the rails. Driver George Knight on the pilot engine felt a jerk after he passed the junction, looked back to see what was happening behind him and started to brake. He told his fireman, Walter Gray, to "hold fast". But the engine behind started to roll badly and turned onto its left side striking the edge of the station platform while still moving. Millhouses engine shed Driver Charles Meek and Fireman Henry Sargeant on this second engine were thrown about in their cab and were thrown out of it when the engine turned on its side. Fireman Sargeant said he was "knocked silly" and couldn't remember any details of the accident. Driver Meek couldn't remember his engine turning over. Both men were later taken to the Royal Hospital with cuts and shock but weren't detained. Driver Meek went home to Plymouth Road, Abbeydale and Fireman Sargeant to Nettleham Road, Woodseats. Meanwhile, Driver Knight had sent his fireman south beyond the station with explosive detonators to fit to the rails to warn any approaching trains of the accident, and he made the overturned engine safe. Signalman Kent put all his signals to danger and sent a warning bell signal to Beauchief signal box. This ensured that the crash site was protected. Driver Knight noted that the rear wheels of his engine's tender had been derailed, but they were put back on the track and the engine number 319 was taken to Millhouses shed for inspection.

Fortunately, all the vehicles in the train remained upright but the two horseboxes and three passenger carriages also derailed. The train guard, John Daniels from Bristol, checked on his passengers and the horses. The passengers were understandably shaken but none complained of injury at the time. It was only afterwards that four passengers complained about the shaking they had received. The passengers were sent back to Sheffield in another train. The horses were found to be uninjured.

The Railway Inspecting Officer, Major Pringle, later to be Colonel Sir John Pringle after 29 years of railway inspection work, set about

his task. He inspected the engines, the coaches, the track and the signals. The drivers and firemen of both engines, two train guards, staff at the Millhouses engine shed, the Station Junction signalman Kent, the man who maintained the points, Henry O'Hare, and Isaac Kidd, the ganger responsible for the mile of tracks through Dore and Totley were all questioned. The track south through Dore and Totley is on a rising gradient of 1 in 100 - in other words rising one foot in every hundred travelled and quite a challenge for the engines

of the time. The point at which the train came to rest from where it first derailed caused Major Pringle to ponder about its excessive speed over the junction. It was found that 33 feet of York stone platform edging and 14 feet of platform brickwork at Dore and Totley station had been damaged - some way from the initial point of derailment. Pringle found the track, signals and points to be in good order, so he turned his attention to the derailed engine, number 1527, built in 1881. Foreman Littlewood at Millhouses engine shed had done a routine monthly

examination of the engine ten days before the accident. He had noted slight wear on the steel tyre of the right-hand leading wheel. Both he and Fitter Logan at Millhouses had checked the engine's wheels again on 7th October and found them fit to run.

In his report, Major Pringle found that despite the enginemens' assurances that they were observing the 20 m.p.h. speed limit, it had in fact been considerably exceeded. The wear on the leading wheel may have accentuated the forces on the derailed locomotive when it passed over the junction. It was recommended that the Midland Railway should consider whether the speed limit at similar junction crossings was sufficiently low to assure safety. Action to enforce obedience of speed restrictions by enginemens was also recommended. Finally, it was questioned if the railway company allowed enough time in their working timetables for trains running between Sheffield and Dronfield.

Fortunately, there has never been a repeat of such an incident at Dore and Totley. And, as a footnote, the speed limit over the crossover from the main line towards London and the Hope Valley line is now 50 m.p.h. The three signal boxes around the station are long gone, and our trains are now signalled from Sheffield although this function will move to Derby in the next few years. The track and points at Dore and Totley are still checked every day by Network Rail's "Orange Army". It now takes the 278 tons of the Bristol express just five minutes to pass Dore and Totley from Sheffield.

Mike Peart



Padley Sweep



Paul Reynolds
Member of The Guild of Master Sweepers

01433 630 245
07964 81215

paul@padleysweep.co.uk
www.padleysweep.co.uk





Chiropodist

Jennifer Downing, S.R.N.
Qualified Chiropodist
M.S.S.Ch. M.B.Ch.A.

Surgery behind Dore Chemist
Townhead Road

Tel: 0114 236 2048
24 hour answering service

Music Tuition



Piano • Keyboard • Flute • Singing
Guitar (rock, metal, blues, jazz, funk, pop, folk)
Music Theory • GCSE work

Music graduates, each with 25 years
teaching and playing experience
All ages, beginners welcome.

Exam work or just for fun!

Call Mark or Karin Finney

0114 237 4901 07854 747153

One man went to mow...
...but his mower wouldn't go!

Now is the time to call

Mower Mender

and be ready for the forthcoming growing season

A friendly local business
servicing all makes of
garden machinery

phone: 0114 236 6958

mobile: 0781 2211149



Blade Sharpening and
Collections and Delivery Service Available

NEW STAR ELECTRICAL

For all your electrical needs, No job too small
Rewires, Fuseboards, Sockets,
Lighting, Faults, Testing
Part 'P' Approved

For quotes & friendly advice ring Robert on
Mobile: 0786 6116697 Home: 0114 245 9537



Your Local Mobile Optician

Ian Truelove (Optometrist) Ltd.
BSc (Hons) MCOptom

Providing Home Eye Tests for over 15 Years.

Personal and Professional eye care in the
comfort of your own home.

Free NHS and private examinations available.

Modern, specialist equipment brings the
consulting room to you.

Choose from over 200 hand picked frames,
delivered and fitted personally.

Ongoing aftercare service included.

Tel: **0114 262 0123** mob: **0794 115 1111**

100 Causeway Head Road, Dore, Sheffield, S17 3DW

Providing NHS services and registered with the General Optical Council,
College of Optometrists, Association of Optometrists.

MWB

M. WOOLHOUSE BUILDERS LTD
THE COMPLETE BUILDING SERVICE

- Design to Completion
- New Builds
- Extensions
- New Roofs
- Slates / Tiles / Stone
- Stonework Specialist
- Renovations

T : 0114 235 3314
M: 07973 908 187



www.mwoolhousebuilders.com
info@mwoolhousebuilders.com

After a really short Spring term in school our thoughts strangely turn towards the end of the year; it seems strange that this comes around so quickly and yet we currently have just over half a term left in school to do all the brilliantly exciting things which are such a strong feature of life at Dore Primary School. It's been really super that our children can be out and about in the village increasingly as the weather becomes warmer. In case you missed the Easter Bonnet parade do check out our website for the photos.

Looking forward to the Summer keep an eye out for The Herd (<http://www.herdofsheffield.com/>). Dore Primary School has designed their own calf who will be part of the stampede in Sheffield. Emilia was first runner up in the city wide competition.



School, as always, has been active in publicising Fair Trade Fortnight. The theme this year was Breakfast... again check out our website for photos. Year 3 held a fundraising event in school for St Luke's. The ingenuity and commitment to the event from children, staff and parents raised a resounding £300 for the charity, which sadly some of us are too familiar with. It is a testament to the strong ethos of the school and one which I'm very proud to be part of.

For me as a school leader it always strikes me that Spring and Summer bring such optimism. In school plans are already underway for September and there's a fine balancing act to be done between this and maintaining our energy levels right through to July!

Moving into the final term of my first year as head at Dore Primary School, the thing which has struck me most is the ability

Chernobyl Children update and appeal for help

Just a quick update and an appeal for help. As The summer rapidly approaches the charity and host families are getting ready for the arrival of the 2016 cohort of 6 children.

Thanks to some fantastic fundraising efforts by the charity in partnership with Brunsmeor Football club we have secured the money to transport the children to Dore and ensure they have a fun and rewarding experience as well as getting much needed medical check ups. Unfortunately the arrangements in place for housing the two Belorussian interpreters have fallen through and we are asking if anyone would be able to host either one or both of the interpreters? Both are women and are fluent English speakers. They are with us from 18 June to 16 July. If you can help please call Liz Whelan on 07811 281213. Many thanks

James Kenny-Levick

of the children, staff, parents and carers to adapt to the inevitable changes when a new head teacher is appointed. I once read a book, recommended by a very dear friend of mine; 'Who Moved My Cheese?' by Spencer Johnson. It refers to how we all respond to change (or not). It's a relatively straightforward read and as a school leader not only opened my eyes to how I anticipate change, but how others do too. So how does this relate to school?

In a climate where austerity has been a necessity, schools have had to face the reality of budget cuts, less investment in capital spending on school buildings, reductions in staffing and resources. The ability of school (and its community) to respond to these changes, to me, is a measure of the strength of a school. At Dore Primary School there are many individuals who deserve a mention in this aspect of school life, but, as I would almost definitely miss one off I'll refer to the groups.

Dore Parents Association (DPA) is a vital partner in the life of Dore Primary School. Over the years Jo Smith and her team have worked tirelessly and supported by the huge generosity of families have raised a truly spectacular amount of money to support school projects. The most significant of these last year was the outdoor classroom, which stands boldly in the school grounds, just waiting for a chance for us to use it.

This year their focus in partnership with school is to support the improved provision of computers in school, a much needed resource for everyday classroom teaching. Our thanks to them, for their ongoing energy, inventiveness and responsiveness to change. This year plans for raising money have already included a very successful Autumn Fair, school discos, regular bun sales and runners in the Sheffield half marathon. Forthcoming events include the annual ball, more discos, a golf day and the annual fun run (provisionally booked for 4th July). Thank you to everyone who continues to

support school during a time of significant change.

Our road safety team continue to work with staff, Dore Democrats and parents to keep our whole community safe, but especially those youngest and most vulnerable. Dore Primary is still looking for a lollipop person for the Furniss Avenue entrance. If anyone feels passionate about kids' safety and has an hour to spare in the morning and about school pick up times, please contact the school office. Similarly you could play your part by setting up a walking bus, please let us know in school so we can pass on your details. Finally a message from our Road Safety Group. As the days are getting longer we would like to remind residents about kids staying out and enjoying outdoor play. Please be mindful when driving around the village as we have a lot of cycling and scooting as well as walking enthusiasts in our village.

Lynnette Glossop

MATHS TUTORIAL

- Irreplaceable one to one experienced teaching
- I teach pupils to think
- Confidence building
- The new GCSE grade boundaries are rising
- Amazing improvements with bright pupils
- Inexpensive and fun
- Why not try one lesson? You will wish you had come earlier.

Ring 0114 236 3649

MINT BARBERS

ESTABLISHED 2007
25 YEARS EXPERIENCE

TRADITIONAL & MODERN BARBERING

OPEN:	PRICES:
TUES/WED 10am - 6pm	Under 5's :£7
THURS/FRI 10am - 7pm	OAP's :£7
SATURDAY 9am - 3pm	5yr to 10yr :£8
	10yr to 14yr :£9
EVERYONE WELCOME	14yr+ £10 :£10

1 Totley Brook Grove, Dore. S17 3PY
CALL: 07917 717486



executive travel
arrive in style

Chauffeur driven executive travel
Business & personal travel
Airport & cruise transfers

01142 745021 // 0796 2373740
www.ccexecutivetravel.co.uk

Chris Malby
14 Birch Farm Avenue, Hemsworth, S8 8GN

SEE THE DIFFERENCE!

AT
MARTYN KEMP OPTICIANS

- COMPREHENSIVE EYE EXAMINATIONS**
including special tests for glaucoma, colour vision, dyslexia & diabetes
- CONTACT LENS CONSULTATIONS**
free contact lens trials and monthly direct debit payment schemes
- PRESCRIPTION SUNGLASSES**
- LEISURE SPECTACLES**
for computer work, fishing, swimming and safety wear
- ACCESSORIES**
ready readers, chains and magnifiers

LENSES BY SEIKO
In all non-budget spectacles

TOTLEY
63 Baslow Road
236 4485

ABBEYDALE
634 Abbeydale Road
255 6554

For more help and information please phone or call into the practice of your choice
For a full list of our practices visit
WWW.MKO.CO.UK
Terms and conditions apply.

Marriott Plumbing & Heating Ltd

Gas Safe Registered 204606

Fully qualified maintenance and installation specialist with 25 years of experience.

- *Boiler repairs and installation.
- *Pilot light failures.
- *Central heating breakdowns.
- *Emergency call outs.
- *Boiler servicing and powerflushing.
- *Landlord certificates.
- *Bathroom suits and wet rooms

No job is too small

please contact: 07976 031853 or
nicholasrichards93@yahoo.co.uk
11 Mercia Drive, Dore, S17 3QF



Domestic electrical work by
award winning
Lady Electrician

- * House rewires * Replacement fuse boards *
- * New sockets and lights * Security systems *
- * CCTV * Telephone and computer points *
- * Garden power and lighting *



All work guaranteed and fully insured. For a free quotation, without obligation,



ring Mandy on 07788-544225

THE ELECTRICAL AND HARDWARE SHOP

SERVING THE S17 AREA

Large range of DIY & Hardware; Lawnmower Repairs and Servicing; Waterless Car Wash and Valeting.

COMPOST - SNOW SHOVELS - GRIT SALT

Hand Made at The Heatherfield
Side entrance 191-193 Baslow Road, Totley.
wheelchair access - free customer car park

Opening hours: 9am to 5pm Tues to Fri (12.30 - 1.30 lunch)
9am to 1pm Sat. Tel 235-1444.

Welcome to an update from Save Dore Trees! Many of you will have followed the campaign over the last few months so here's a chance to catch up with recent developments.

Save Dore Trees was set up by residents of Abbeydale Park Rise in the late summer of 2015. The petition was launched, along with a Facebook page, and the trees listed by Sheffield City Council (SCC) for replacement were identified with yellow ribbon.

Since then our area has lost many trees. Our local campaign, along with others across the city, continues in its efforts to protect the remaining healthy street trees. All the local campaigns automatically come under the umbrella of Sheffield Tree Action Group (STAG).

So, what's been happening? A public meeting was held recently and was well-attended by locals and other city-wide supporters. We discussed our ideas and updated residents with all aspects of the campaign.

Following the SCC survey, a number of streets were referred to the Independent Tree Panel (ITP), based on the threshold of 50% of households who *responded* disagreeing with the plans. However the panel's work seems to have been put on hold due to the legal action. In the meantime, residents of Vernon Road and Chatsworth Road have instigated a marvellous leaflet campaign, go and see how many are displaying a poster to show their support. This initiative has been extended to the streets under the consideration of the ITP and is being implemented by our tree champions.

It is clear that there is substantial grass roots support right across our locality. This certainly wasn't always reflected in the surveys which were fraught with issues from the outset. The internet link wasn't reliable and initial requests for paper copies didn't materialise. There was no closing date in the survey letter from Councillor Terry Fox and, although the survey was extended due to these and other reasons, it would appear the low response rates were a direct result of the issues.

But please be completely clear. The ITP can only *advise* Councillor Fox and SCC and its recommendations do not have to be taken on board. Many residents have wanted to make direct contact with the ITP and its chair, Andy Buck but until very recently no contact details had been published. And you can only hold an opinion on your own street!

Recently Save Dore Trees hosted a Blossom party on Abbeydale Park Rise. Local residents, and visitors from further afield, gathered to admire the gorgeous blossom and enjoy tea and cakes. Thanks to all who contributed in any way on the day. We shared information and chatted about future plans, whilst all the time admiring some of the threatened trees.

We are currently awaiting news on the outcome of the legal action taken by Dave Dillner. Dave has worked incredibly hard on this campaign for many months and has succeeded in keeping these issues in the public domain. He has also supported us on many occasions, thank you Dave! There's a Crowd Justice Funding initiative in place to raise money to fund this legal action, details below.

By the time you read this update, the outcome may be known. We will move ahead with our plans as soon as the full facts are available. Although the felling injunction was lifted at the hearing, SCC have indicated that, other than for dangerous trees, they will not resume felling until the judgement is received. At this point, the risk to the remaining trees will be high.

The vast majority of trees that have survived so far are classed as causing damage to surface. They are, in the main, mature and healthy trees. There are alternative engineering solutions which should be considered in order for these trees to be retained. In the early days of the campaign, we were told that healthy trees which were disturbing the surface had to go as the machine used to prepare the pavement would damage the tree so badly that it would cease to be viable. Yet the truth is that the depth of planing is so slight, the tree could quite easily survive the minimal disturbance to its roots. At the very least it should be given a chance and not subjected to enforced euthanasia!

Please go and look at the trees under threat on Abbeydale Park Rise, Chatsworth Road and Vernon Road. And though they didn't reach the ITP, the limes on Totley Brook Road are still standing at the moment. Also the future of the majestic limes on Brinkburn Vale Road is not certain. These trees provide important historical links. The Vernon Oak is a boundary tree which is believed to have stood for over 130 years and the Totley Brook limes date from the end of the 19th century. The threatened trees on Abbeydale Park Rise are known far and wide for the spring blossom and the Christmas lights.



Twenty of these trees may be lost. In a report commissioned by STAG, an independent arborist indicated that the vast majority could and should be retained and are only causing minor footway and kerb damage. Their removal would deprive us of valuable assets, contributing to our health and well-being. And although these areas are so important, no street tree should be needlessly sacrificed. Many have already been felled but we will continue to fight for those still standing.

The provision of substitute trees is included in the Amey contract but the new saplings come nowhere near to being suitable replacements for these mature trees, both in aesthetic value and in ecological terms and health benefits. The planting season is now over so it will be November before any further new trees appear. On some streets, the method of working is to fill in the empty pits, tarmac over them during the pavement works and then dig out the pit again in the autumn, ready for planting the replacement tree! We will be keeping an eye out to make sure it happens!

We all welcome new pavements and roads but these need not be provided at such a high price. It is simply not necessary, a choice between roads and pavements on the one hand and street trees on the other. The campaigns have never contested the felling of dead and dangerous trees. With little maintenance of the street tree stock for many years, there are trees which have to be replaced. But healthy and mature trees should be retained.

What you can do to support Save Dore Trees:

- Visit our Facebook page: Save Dore Trees
- Follow us on Twitter: Vernon Oak @SAVEDORETREES
- Sign our petition on change.org
- Keep in touch with developments by visiting STAG at www.savesheffielddtrees.org.uk
- Visit the Facebook page: STAG
- Link for Crowd Justice Funding: <https://www.crowdjustice.co.uk/case/sheffield-trees/>
- Display a leaflet: Email, text or phone me and we will arrange to drop off a leaflet

For further information or to offer your support, contact:

Ann Anderson
0114 236 8497 / 07715 623523
annanddavid3@sky.com

Linda's Mobile Sewing Box

Need it altered?
Contact:- Linda on
0114 2374809
07503 160048

If you can't, then I can!

Sewing alterations and repairs at reasonable prices

Men & Woman's Alterations
From Wedding & Evening Gowns to Work Clothes
Skirts & Trousers shortened, Zips re-fitted

Curtain making/shortening
Cushion covers & tie backs to match

email Lindassewingbox@hotmail.co.uk

Kitchen Facelifts

Replacement kitchen unit doors and Drawer fronts made to any size, in the material and style of your choice.

Replacement worktops supplied and fitted in laminate, solid surfacing, solid wood and granite.

Free estimates
Call Steve: 07817717531

Little Kickers

Approved Football training for children aged 18 months to 7 years

A positive, fun-filled pre-school football programme executed in a friendly, pressure-free environment. Learning invaluable social skills like listening, sharing, taking turns and teamwork and emphasis on simple learning concepts like colours and numbers whilst also improving their basic balance, agility and co-ordination.

There are classes near you, for more information please contact: **Becky Morton**
on **07532 180 852**
or email: bmorton@littlekickers

HANDYMAN

Experienced carpenter and joiner
General house maintenance including jet washing, tiling, painting and small electrical work
Reliable and quality assured
Gutters cleared
No job too big or too small

Call John, mobile: 07979 628811
tel: 0114 262 0143

Guitar tuition

acoustic • electric
bass • all styles

Sit grade exams or play for fun!
All ages welcome – beginners to advanced

Jane Bowns
T 0114 236 0202 M 0779 881 5172

Hinchcliffe Decorators

Where Quality Work Comes as Standard

- Professional, reliable service
- Interior, Exterior work
- Commercial work undertaken
- Fully Insured, locally based
- Family run business

Specialists in all types of decoration
Contact Ian on:-
0114 262 0584 or 07977 956979
www.hinchcliffedecorators.co.uk

more rehab

Neurological Physiotherapy & Services

More Rehab offer a high quality multidisciplinary therapy service to patients that require specialised neurological or respiratory care.

The specialised services we offer include:

- Hands-On Therapy
- Exercise Programmes
- Hydrotherapy
- Electrical Stimulation (Upper & Lower Limb)
- Gymnasium Work
- Splinting (Upper & Lower Limb)
- FES Bike Assessments & Programmes
- Carer Training
- Amputee Rehab
- Accommodation Assessments
- Equipment & Aids Assessments including wheelchair & posture
- Vocational Rehabilitation and much more, please contact us for more details.

We have clinics in South Yorkshire, Derbyshire and the surrounding areas. We are happy to do visits to your home, school or work place.

Tel: 0114 2353150
Web: www.morerehab.com

We're BBC round here...



Dore Old School in the 1960s

A lovely document surfaced recently, forwarded to the DVS archive by Ken Ineson who now lives in New Zealand. In 1963, a group of pupils at the then Dore School (now the Old School) undertook a survey of Dore as a school project. In those pre-internet days they couldn't just look up their answers on a computer; a survey form was designed and much door-knocking and personal interviewing was involved. The children even had to make their own street map of the village as the printed maps available weren't up to date.

We'd like to share with you some of their findings, and if Frances Ofield, Nicholas Maxwell, Jonathan Sketchley, Paul Jay, John Howell or John Brooks are out there, please get in touch and let us know whether you remember any of this!

The survey covered 49 roads and a total of 1022 houses; 2983

residents altogether, of which 2099 were adults. Half of the households had no children, with a further 174 supporting children who had left school but were still living with their parents.

395 families, or roughly 39% of the total were natives of Dore, with a similar number from the greater Sheffield area. Only six families came from outside the UK. Their occupations varied widely, but as one would expect the professional classes were well-represented with 19 doctors, 10 architects, 11 solicitors and 23 accountants. The number against 'MPs' in the list is a little smudged, but looks like 15!

Sheffield's steel manufacturing is also apparent in the survey which shows 6 cutlers and 14 metallurgists, as well as scissor makers, electroplaters and an iron founder. We had 12 policemen, 49 engineers, a dozen farmers and ten butchers.

There is one question on the survey which very much dates it. In the days when there were only two television channels, a certain amount of 'brand loyalty' still existed between them. Whilst 670 households were progressively watching both the BBC and the new upstart ITV, 171 householders said that they watched only Auntie Beeb. Just two exclusively tuned in to ITV and 164 – almost one in six - didn't own a television set.

Pet ownership was another area covered by the survey, which counted 326 dogs, 137 cats, 24 horses, 122 rodents, 155 fish, 18 birds and a goat. 320 households didn't have a telephone and 317 didn't own a car. There were 887 cars on Dore's roads altogether, but only 176 families owned more than one.

So the report concludes, if all things were shared out equally every house in Dore would have 2.9 people (of whom 0.98 would be children); 1.4 pets, 0.8 of a garage, 0.88 of a car and 2/3 of a telephone.

John Eastwood

Gold medallist at Dore Garden Club

The March presentation for Dore Garden Club continued with the high standard that we have come to expect. It was indeed a gold medal presentation.

"How to get the Best from Heuchera, Heucherella, and Tiarella" was presented by Vicky Fisher, a specialist grower from Cheshire. Six times a gold medallist at the Chelsea Flower Show, her presentation was of the highest standard. Humorous and entertaining, it was accompanied by a wonderful slide show and loads of good advice.

The Chelsea Flower Show is the equivalent of The Olympic Games in the horticultural calendar. To win a gold medal there takes a lot of hard work and dedication. Perhaps not the same self-sacrifice of our own Jessica Ennis-Hill to win an Olympic Gold Medal but still a great deal of effort. To win six gold medals in successive years at Chelsea, as Vicky did, is absolutely amazing.

Vicky's appearance was greeted by a very good attendance of members and guests who showed their appreciation with hearty applause.

The very high standard was continued at our April meeting with Andy Hubbuck's presentation on "Raising Sweet Peas".

Andy, who is a renowned expert on sweet peas put on a great presentation which was highly informative and entertaining. The good attendance illustrated just how popular this flower is. I am sure that the tips and advice given will help members to achieve great results this summer. Maybe we will see some of the results at Dore Show later in the year.

Thanks to Carol Whitehead for coming up with these two gems.

Speaking of gold medals may members of Dore Garden Club take this opportunity of wishing Jessica all the very best wishes for success in the upcoming Olympic Games in August.

David Riley

Local Stonework Specialist

All stonework professionally undertaken

- Ornate and Bespoke Stonework
- Walling and Paving
- Hard Landscaping
- Ponds & Rockeries
- Steps & Walkways
- Extensions and Roofing



Jason Collyer Building Services

Over 25 years experience
Highly competitive prices

For a free estimate
and examples of work carried out,
please contact Jason Collyer
Tel: 07855 777318

4 Lane Head Road, Totley, Sheffield S17 3BD

Richard Farnsworth



As the last edition of Dore to Door went to be printed in February, we were saddened to learn of the death of Richard Farnsworth. Richard was a great supporter of the village and the DVS, and a trustee of the Old School. He passed away at home on February 3rd, in a house less than half a mile from where he had been born 72 years before.

On these pages we hear from three people who knew Richard well. We are grateful to Richard Knights for permission to publish below his eulogy which was read to a standing-room-only Dore Church at the funeral. David Owen is a fellow founder member of the Devonshire Arms Reading Group, one of Richard's favourite leisure activities. Finally, Ron Burley has a few words about Richard's work with the National Farmers' Union over many years.

I would like to say, as I am sure Gillian, Ben and Tim would too, how wonderful it is to see so many here this afternoon. In his humble way Richard would have been bemused, and not understood what all the fuss was about.

I realise that whilst I knew Richard for twenty-two years, many of you have known him for far longer. I am conscious that I can only scratch the surface of what was a life fully lived. There is just too much to talk about, so I hope in the next few minutes I can help us all to identify memories of Richard which will perhaps become our lasting ones. I have chosen six words which I think capture aspects of Richard, and help to describe his nature and unique character:

Contentment: Richard was content with himself as a person, he wasn't conventional, but didn't worry about what people thought – sometimes, I observed, to the despair of Gillian.

He often seemed slightly dishevelled, but appearance didn't worry him, practicality was more important to Richard than style – and this was not just from working as a farmer, out in all weathers, it was an inner contentment with who he was. Richard was equally content with his own thoughts or listening to Radio 4 as

much as joining in the conversation with others. He was amicable, communicated in a very straightforward manner and did not complain.

When he retired from farming Richard started work as a paper-boy, using his distinctive slightly battered white van, with Radio 4 audible as he delivered a paper and then drove on to the next house. He used to say it kept him in beer.

Committed: Richard was a man of commitment. He was committed to his family, to the family farming business, to Dore village, to the School Trust, to bell ringing, to Christ Church, and particularly latterly to the upkeep of the church yard.

Richard was a Dore man. He was born in Moss Cottage in Ryecroft Glen, and lived in Ryecroft Farm, on Causeway Head Road and on Rushley Avenue. It is fitting that he passed away at home in Dore.

Richard did so much for this village. He was a trustee of the Old School - often as well doing maintenance and locking and unlocking the building. He supported the work of the Village Society, practically with delivering Dore to Door and behind the scenes at Dore Show, where he would also enter his jams and tomatoes. He had a story of a year when he was the only one to enter apples; he was indignant and amused to only get second prize. Perhaps more than anything he was a fount of historic knowledge about the village and able to direct those recording history to salient points.

It is as recent as last summer that he spent several days removing brambles from the bonfire field on Parker's Lane, a field he continued to rent specifically for the Scouts Guy Fawkes night firework display.

Supportive: Both Ben and Tim have described how Richard's style as a parent was to give freedom, to encourage, to trust and then support no matter what happened.

Richard gave support to several organisations. National Farmers Union Sheffield, where he was at different times Vice-chairman, Chairman and most recently Treasurer, still doing work for them until a few weeks ago.

NFU Legal & Agricultural Wages Board was another organisation he supported, as was Dore Bell ringers where he was one-time tower captain, taught many people, encouraged even more and enjoyed the fellowship of ringers in the tower and then in the pub.

For over forty years Richard supported the Sheffield University bell ringers, so much so that he was given an engraved tankard in 2009 in recognition of this support.

Practical and inventive: In many ways Richard was an engineer working as a farmer. He was someone who liked to solve practical problems. Tim talks of how Richard would fix problems with Tim's car.

This included the time when the ignition key barrel broke, Richard's practical solution was to abandon it and for Tim to start the car with a screwdriver.

The belfry also boasts of some of Richard's inventiveness. The sound control in one louvre remains some bags of hay tied in place. But Richard also built some proper acoustic controls for the other three louvres, with a series of ropes and pulleys to operate them. Not all Richard's work was so basic in style; he installed a camera hidden in the tower louvres so the ringers can see when wedding couples go through the Lych gate and drive off and the wedding ringing can finish.

Intelligent: Richard was an intelligent man. He went to grammar school in Dronfield and then to Harper Adams agricultural college in Shropshire, now a highly respected specialist university. Richard had a love of the natural world and particularly astronomy. He would take his telescope out to view particular astronomical events, to get greater clarity than from indoors. He was also prepared to sleep in his van when he visited Cornwall for a solar eclipse. Richard played chess, had interests in 20th century history, politics, cricket and more latterly enjoyed the Devonshire Arms book club.

Richard also had a shrewd business head, with evidence of careful investment from teenage years.

Generous: Richard was extremely generous with his time. He worked long hours farming, but still found time for other activities and commitments; for Gillian, for his family (over recent years becoming a quietly proud grandfather), for the village, for bell ringing and for friends.

If Richard saw a job that needed doing and had the skills to do it, it would get done. One holiday in Spain he spent much of time building a tree-house for his relative's children.

He gave time to family, to other people and to jobs in the village, church, bell ringing and the wider farming community.

We all have memories of Richard, whether it is a plant growing inside his van, swimming in the sea, or phrases like "right you are", or "engage brain". Whether we saw him as an enigma, a village icon or an unsung hero, I hope my words have helped remind you of some aspects of Richard's character. It will be good to share them with one another later.

For me it is ringing bells and afterwards discussions in the pub. In some twenty years I think I drank around 2,500 pints with Richard – he drank a few more than me. For me it's fitting that when we have laid him to rest some of us will ring the bells and many of us will retire to the Devonshire Arms.

I thank God for Richard being part of our lives and for his service to this community.

Richard Knights

I was not surprised at the standing room only attendance at Richard's funeral service at Christ Church on 17th February. It was a tribute to his standing in Dore and the warmth of feeling that so many people felt for him. This was accurately and excellently illustrated by Richard Knights' eulogy.

My tribute to Richard is that as relatively recent newcomers to Dore in 2001 he made both my wife Janice and myself very welcome and we became friends. We first met in the Devonshire Arms, our local community centre for conversation. There we discussed local, national and international politics; the state of agriculture in the UK; cricket; the trials and tribulations of being a trustee of a charity; reading and the arts in general and any number of other topics, not least the history of Sheffield and his beloved Dore in particular.

With Richard, over the years, I attended the Longshaw sheep dog trials and even an NFU meeting in Higher Bradfield to outline the arrangements for the Tour de France in Sheffield. We worked together on various local events and he was occasionally our morning paper boy and by far the earliest and most reliable.

Following a conversation in the Devonshire Arms early one Saturday evening he challenged Janice to prove that she could milk cows. As agreed, he collected her at 7am the next morning and I did not see her until early afternoon when she returned with a dozen eggs. He later told me that she really did know how to milk cows and muck out because of her Orcadian heritage. He liked people who were true to their word!

Besides the joy of becoming a grandfather, one of his real pleasures in later life was that he was a founding member of the Devonshire Arms Reading Group which started in November 2011. He was a regular attendee and never missed a meeting until January 2016. He really enjoyed our monthly meetings and discussing books that he would not have read otherwise. As might be expected, he had his own opinions on every one of them and was not reluctant to let us know them. We loved listening to his trenchant and considered opinions. When I visited him twice at the Sheffield Dialysis Centre this January he first asked me to describe the biography of Samuel Pepys which was that month's book choice and subsequently how the discussion had gone.

It is worth recording that eight out of a possible 10 members, including Richard of course, attended the funeral and the other two had inescapable work commitments. That is a tribute to how much we valued him and more than once at our recent meetings somebody has said, "I wonder what Richard would have made of this?"

Our thoughts remain with Gillian and her family.

David Owen

Richard spent his farming life working with his brother John at Dore, although they are at the other side of Sheffield from me the family name was well known to us many years ago. I can't remember exactly when we first met but it must have been in the late 60's at the NFU meetings when I was made Chairman and Richard vice Chair. He followed on to be Chair on a number of occasions as the years went by. He soon stood out with his enthusiasm for the job and his knowledge of farming and its politics. Working together we travelled all over what was known as the West Riding (and still is to some) to county branch meetings. I remember once being early for a meeting so he took me to McDonalds for a meal; that was the first time I had been there, Richard was not backward in coming forward to voice his opinion on behalf of South Yorkshire farmers.

He became a delegate on a fair number of county branch committees but the ones that stand out are his work on the county legal committee and the agricultural wages board, for both of which he had a real passion, put in many hours of work and moved some big mountains.

It wasn't all work though. I have some special memories of good nights out with Richard and Gillian at the Cutlers' Hall and Baldwin's Omega to mention just two.

I am sure there is a lot more to be said about his life but he certainly left his mark and will be sadly missed by the farming community and especially by me.

R.I.P Richard, your old mate,

Ron Burley

Richard's YouTube legacy

Dear John,

Your readers may be interested in these two short films showing some history of Dore and narrated by my father Richard Farnsworth which I have recently uploaded to YouTube:

<http://bit.ly/1NzvK5B>

<http://bit.ly/1Thm0RX>

or alternatively go to youtube.com and search for Richard Farnsworth Dore and they should be at the top of the list

The first film "Craig, the story of a dog" documents the training of a sheepdog by my grandfather at Ryecroft Farm in 1946. This has been on YouTube for a few years in three separate segments due to a previous time limit of 10 minutes, but I have recently uploaded the full version which may be of interest to anyone who had not seen it previously. The second film titled "The ploughing match" shows documentary footage of the Dore and district ploughing society at various farms around the Dore area from around 1954 to 1964. It was narrated by my Dad in 2013 and I have just uploaded this for the first time. As you may know my Dad was passionate about the history of Dore and I hope people may be interested in learning some local history from watching these films.

Tim Farnsworth

2016 WELL DRESSINGS

15-22 May	Ripley
21-29 May	Ashford in the Water
21-23 May	Etwall
21-26 May	Swanwick
22-28 May	Monyash
28-30 May	Brackenfield
28 May-4 Jun	Middleton by Youlgrove
12-19 Jun	Cressbrook
12-18 Jun	Marston Montgomery
12-18 Jun	Mayfield
17-23 Jun	Norbury School (Ashbourne)
18-25 Jun	Biddulph Moor
18-28 Jun	Flash
19-27 Jun	Litton

25-30 Jun	Youlgrove
25 Jun-3 Jul	Derby
25 Jun-3 Jul	Old Whittington
26 Jun-3 Jul	Bakewell
26 Jun-3 Jul	Whaley Bridge
2-7 Jul	Aston-on-Trent
2-10 Jul	Bollington
2-7 Jul	Coal Aston
2-10 Jul	Hathersage
3-9 Jul	Dore
9-17 Jul	Hayfield
9-17 Jul	Over Haddon
10-17 Jul	Bamford
11-13 Jul	Pilsley
14-17 Jul	Upper Langwith
16-20 Jul	Belper

16-22 Jul	Crich
16-30 Jul	Great Longstone
16-23 Jul	Heath Village
16-23 Jul	Little Longstone
22-29 Jul	Killamarsh
23-30 Jul	Clowne
23 Jul-1 Aug	Stoney Middleton
30 Jul-5 Aug	Bonsall
30 Jul	Bradwell
11-17 Aug	Great Hucklow
17-23 Aug	Barlow
20-26 Aug	Taddington
27 Aug-3 Sep	Eyam
27 Aug-3 Sep	Foolow
27 Aug-4 Sep	Wormhill
10-17 Sep	Chesterfield (Market)

Opportunity of a Lifetime (Neighbourhood)

In late 2014, researchers from the University of Sheffield began working in Dore as part of the DWELL Project, which is developing new ideas for how homes and neighbourhoods can keep people well and active in later life. As well as working with the City Council and housing developers, the DWELL project was set up to collaborate with local residents and communities. Together, we hope to better understand how places such as Dore can become Lifetime Neighbourhoods - places that give people the best possible chance of being healthy, active, and engaged in the life of the neighbourhood, particularly as they grow older.

There were a number of reasons for choosing Dore as one of the locations for this research: The local demographics are noticeably different to the city as a whole, with over a quarter of Dore residents over the age of 65 (almost twice the Sheffield average). As a neighbourhood located on the edge of the city, the geography of Dore is well known for its challenges in terms of getting around and getting into the city centre (especially when it snows!). We also wanted to work with a wide range of residents and communities on the project, including some of the more affluent parts of the city that are sometimes felt to be overlooked by researchers or local politicians.

This type of community-based research only works with the involvement of local people, and in Dore we have been fortunate to have worked with a committed and enthusiastic group of residents who signed up as co-researchers on the project. This group not only helped to shape the direction of the research but enabled DWELL to reach a wide group of local people; community groups; local businesses; the Village Society; children at the local Primary School; and the wider public when presented our 'future visions' at the Dore Show last September.

Together we have explored and mapped the village, we have looked at examples of other Lifetime Neighbourhoods from across the UK, and we have consulted with local residents (of all ages). From this process the group have developed a list of seven priority actions for Dore to develop as a Lifetime Neighbourhood:

- Protect local bus routes, both through lobbying the City Council/ bus companies and making use of the existing services wherever possible.
- Increase local footfall to help support local businesses and services in the village centre (e.g. by introducing car parking controls and a community toilet scheme).
- Build on the programme of local events that bring the community together and bring greater footfall (e.g. cinema screenings, farmers' market).
- Develop the Old School as an IT hub to help older residents to get online.
- Tackle traffic congestion issues by introducing a one-way system in the centre.
- Make the village more accessible and 'pedestrian friendly' by widening pavements, introducing pedestrian crossings and creating more places to sit and meet.
- Widen the choice of local housing for first-time buyers and downsizers so that people don't get priced out of the neighbourhood.

While some of the issues on list may be all too familiar, the DWELL group have tried to consider the future possibilities and challenges for the village, and the actions needed to bring about positive change. Unfortunately, priorities identified by residents and researchers can often get overtaken by events on the ground. In Dore this has been highlighted by the loss of the bus link to the Hallamshire Hospital (despite the local protest) and the closure of the local HSBC bank. Other planned works, such as the Amey 'Streets Ahead' programme, mean that other traffic calming measures or pavement improvements suggested by the local community have not been taken forward.

Despite these setbacks, the residents and business owners

of Dore remain in a relatively strong position to influence the future of their neighbourhood. Dore Village Society has recently been designated as the Dore Neighbourhood Forum, and this Forum is now in the process of consulting with local people on a Neighbourhood Plan to establish principles for the future development and use of land in Dore.

The content and form of a Neighbourhood Plan will vary from place-to-place depending on local priorities, and the Dore Village Society have already identified some of these in the 'Village Design Statement', published back in 2005. Two of the most notable priorities are a need to protect green corridors between Dore and the surrounding urban areas, and the need to restrict the sub-division of gardens for infill development (a.k.a. 'garden grabbing'). The Dore Village Society have suggested that each of these issues could potentially be addressed by planning policies in a new Neighbourhood Plan, and indeed, similar policies have been put forward in Neighbourhood Plans in other areas (e.g. Broughton Astley in Leicestershire and Cringleford in South Norfolk).

While these potential policies are primarily aimed at maintaining the character of the village, they do less to address the range of concerns raised by the DWELL findings, particularly the need to widen the choice of housing. Housing is an issue that is generating a huge amount of local and national attention at present, particularly given the difficulties facing first-time buyers and the housing requirements of an ageing population. The Neighbourhood Planning process offers local communities such as Dore a chance to take control of the types of new housing needed locally, and in other areas in the UK Neighbourhood Plans have been put forward to do just that. In North Devon, one neighbourhood policy requires a proportion of smaller starter homes aimed at first time buyers (e.g. Lynton and Lynmouth in North Devon). Meanwhile in Staffordshire, another neighbourhood have proposed a policy for a certain proportion (50%) of new housing to be designed to be with downsizers or older people in mind (Rolleston on Dove).

In addition to these formal planning policies, Neighbourhood Plans can contain more aspirational or 'visioning' statements to describe how the local community would like the neighbourhood to improve or develop over time. These visions have less legal weight than planning policies, but are nonetheless important in agreeing local priorities for the investment of any future resources. Once a Neighbourhood Plan is in place (following examination by an independent examiner and approval by the local community in a referendum), certain powers are transferred to the community. This includes responsibility for a quarter of all Community Infrastructure Levy (CIL) monies arising from new development in the area. While the amount of these CIL monies available will depend on the scale of any new development, this power gives a community much greater say in which local projects are priorities for improvement and investment (e.g. new community facilities, green spaces, or pedestrian crossings).

Although the Dore neighbourhood planning process is still at an early stage, the progress made by other neighbourhoods around the country demonstrates the way in which Neighbourhood Plans can enable communities to identify their priority issues and develop specific policies to begin to address these. When this approach is combined with the type of a fine-grained consultation and visioning work carried out by the DWELL group, we can begin to imagine how neighbourhoods can embrace a 'Lifetime' approach to development in a way that makes a place attractive, healthy, vibrant, green, and accessible for the whole community.

The DWELL project at the University of Sheffield is working with Sheffield City Council, developers, and local residents across the city to develop new ideas for how homes and neighbourhoods can keep people well and active in later life.

More details of the DWELL visions for Dore as a Lifetime Neighbourhood can be found at: http://dwell.group.shef.ac.uk/DWELL_Dore_visions_2015.pdf

Adam Park

Drop in on the Dore Neighbourhood Planners – an Opportunity Not to be Missed

Drop in on Dore Methodist Church Hall on Wednesday 25th May between 6pm and 8.30pm to meet, question and impress those volunteers who are currently drafting the Dore Neighbourhood Plan: they look forward to hearing your views.

You will have the chance to circulate between stalls set up by each of the seven Working Groups to display the progress they are making. You can let them know how you react to their proposals and what ideas you have for making Dore better for you and your family.

A reminder first about the planning process which is underway. On 12 November last year the Dore Neighbourhood Forum (consisting of all 1,000 or so members of Dore Village Society) empowered a Steering Group (of which I am Chair) and seven Working Groups to review work already carried out on a Neighbourhood Planning text for Dore in 2012, to consult widely within our community and to draft afresh a Neighbourhood Plan to be eventually recommended to the Forum in the autumn of this year. Once the Forum's agreement is reached, the draft Plan will be scrutinised by our 'sponsoring planning authorities', Sheffield City Council and the Peak District National Park Authority, and by the Planning Inspectorate. The emergent draft Plan will eventually be subjected to a referendum of all Dore registered electors and, if passed by a majority, will become part of the suite of Planning documents controlling development in Dore.

You can see this is an important planning process which ultimately affects us all and one which can only be strengthened by constructive public consultation and involvement – hence the drop-in event to be held on 25 May.

The areas covered in the draft Neighbourhood Plan are set out below (and some of the typical issues for debate are italicised):

The National Park – The western half of the Dore Neighbourhood Area lies within the Peak District National Park which has a very protective development planning regime. We ought to ask:

- *Can our Neighbourhood Plan usefully add anything to that regime?*
- *Should Dore set out to protect views from Dore into the Park and from the Park into Dore?*
- *Is there more that we can do to protect the interests of Dore residents walking into the Park?*

The Green Belt – Sheffield's Green Belt lies between Dore and the National Park to the west and wraps itself round Dore to the north and east. We could ask:

- *Should we sacrifice some Green Belt for housing sites or continue to preserve it so that it can protect the setting of the National Park, the special separate character of Dore, and the wildlife corridor from the countryside to Ecclesall Woods?*
- *Do we value its role in stopping the merging of Dore, Totley, Bradway and Whirlow into one township and in containing the south-west growth of Sheffield suburbia?*

Housing Areas – We have one Working Group examining the character and diversity of Dore's various housing areas. This is undoubtedly an attractive part of the city in which to live, but we could ask:

- *Should we concentrate on preserving the valued character of our housing areas or contemplate redevelopment with a more intense density of homes?*
- *Should our gardens be protected for privacy and amenity or in some instances given up for more housing development?*

Conservation – Dore has a long history stretching back into the Dark Ages. Even as recently as less than a century ago it remained a small Derbyshire village. In the twentieth century it grew enormously within Sheffield but retained places of distinct character. We ought to ask:

- *Should we extend control over minor development in the Conservation Area in the village centre to prevent the gradual erosion of its character?*
- *Is there a case for designating a Conservation Area elsewhere in Dore – perhaps in the area of large Victorian houses at the southern end of Dore Road and on Abbeydale Road South?*
- *Should we protect archaeological remains in the village centre and at old industrial sites in the Limb Valley?*

Open Spaces – While Dore is almost surrounded by attractive countryside, it also benefits from a number of open spaces in its residential areas. We might ask:

- *Do you think that Dore has sufficient open spaces or do we need to identify more, and if so where?*
- *Should our open spaces be designated in a way which protects them from development as valued community assets or are one or two of them potential sites for worthwhile development?*

Sustainable Transport – Dore is located between two increasingly busy main roads from the Peak District into the city centre and has a poor bus service. It has a congested village centre and an increasingly popular railway station with a car-parking problem. We might ask:

- *Should park and ride facilities at Dore & Totley Station be increased but only at the price of restricting on-street parking near the station?*
- *Is there a case for traffic schemes to reduce vehicle speeds in the village centre and on Long Line?*
- *Do you think there should be a scheme to reduce day-long parking in the village centre?*
- *Is there any development planning scope for improving the bus services for Dore?*

Village Centre – In a large residential area like Dore it would normally be regarded as good planning practice to provide and maintain a central area with a good range of shops and services within reasonable walking distance for those without their own transport and to discourage unnecessary car journeys. We might ask:

- *How far does Dore village centre meet that expectation?*
- *Should a policy be established which is likely to retain and enhance a good range of retail and community services in the village centre?*
- *Can more be done to enhance the village centre as a meeting and gathering place?*
- *Is there more scope for pedestrian-friendly access within the village centre?*

It is a sad reality of modern life that far too many people allow decisions to be made about the place they live in without seeking – indeed demanding – involvement. Of course, it is not always easy to get involved when the powers that be prefer to make the decisions for us, as they insist in doing in the matter of street trees. The beauty of neighbourhood planning is that for once Parliament has given local people in distinct localities the opportunity to seriously influence development by producing their own Planning Policies. It is an opportunity not to be missed, so don't leave it all to the volunteer planners on our Steering Group and Working Groups and then complain that they got it wrong: **give them the benefit of your views on 25th May.**

Just a word of caution though: this is not about the freedom to write whatever we like. We are obliged to write in the language and discipline of Development Planning. To some this is a rather austere and rarified language without poetry and vision. But even the austere and rarified language needs to be driven by vision: so we are trying to establish a vision for Dore to determine the direction of travel for Development Planning.

Christopher Pennell
Chair of the Dore Neighbourhood Plan Steering Group

FULWOOD MOTOR COMPANY

A GREGORY & DENCH COMPANY

WE BUY CARS

LOW MILEAGE EXAMPLES WANTED
WITH A FULL SERVICE HISTORY
PLEASE TELEPHONE SIMON TO
ARRANGE A HOME APPOINTMENT
OR CALL IN TO OUR SHOWROOM

423, Fulwood Road, Sheffield. S10 3GF.

Tel: 0114 2309500 Mobile: 0780 2884030

www.fulwoodmotorcompany.com

Express
Installations 

10 YEAR GUARANTEE

Suppliers and installers of
U-PVC windows and doors



We can expertly install...

- Energy rated uPVC Windows
- Sliding Sash uPVC Windows
- High security uPVC doors
- Sliding and French Doors
- Bi-folding Doors
- GRP Composite Doors
- Solidor Timber Composite Doors
- Conservatories & Porches



Email us now at - pcooke3@sky.com

Or call 07831 167 587



GasMarkOne

Plumbing & Heating

All aspects of plumbing,
heating and gas work undertaken.

- COMBI BOILER INSTALLATION & SERVICING
- SOLAR HEATING
- UNDER FLOOR HEATING
- BOILER & CENTRAL HEATING CHANGING & UPGRADING
- BATHROOM DESIGN & INSTALLATION
- WETROOM
- WATER LEAKS
- ADVICE ON ENERGY SAVING



www.gas-mk-1.co.uk

For a free no obligation quotation call
0114 2307370 07970 498553

Ecclesall Tree & Garden Services

Specialists in all aspects of professional tree surgery

- Trees re-shaped/felled
- Stump removal & grinding
- Hedges & shrubs cut, reduced, or removed
- Garden & site clearance
- Section felling
- Gale-damaged trees made safe
- Pruning & dead-wooding
- Firewood logs & wood chippings for sale
- Gardens tidied
- Grass cutting
- Garden rubbish removal

We check for tree
preservation orders

For a free price estimate
contact Bill Bingham

0114 236 0592

Fully insured & safety conscious

Festival Programme

Sat 25th June	Dore Boundary Walk Arranged by Dore Village Society	Meet at Whirlow Bridge 10.00 am Everyone welcome
Sun 26th June	Dore Open Gardens 2.00 pm – 6.00 pm	Organised by Jean Stevens & Sue Wilcock. Tickets from Valerie of Dore or from first garden visited
Mon 27th June	Dore Heritage Trail Meet Old School 10.00 am	Led by Dorne Coggins To book Tel: 2360002
Mon 27th June	Mothers' Union Strawberry Fayre 2.00 to 4.00 pm, open to all	Dore Old School
Mon 27th June- Fri 1st July	Preparation of Village Well Dressings 10.00 am - noon; 2.00 - 5.00 pm & 7.00 - 9.00 pm	New helpers very welcome. Scout HQ, Rushley Road
Thu 30th June	Trees of Dore Meet Old School 7.30 pm	An exploratory walk led by Tony Heathcote To book a place Tel: 2360002
Sat 2nd July	Unveiling of Village Well Dressings 10.00 am	Village Green & Devonshire Terrace Road
Sat 2nd July	Family Wyvern Walk Meet Dore Old School for 9.30 am start	Led by Chris Cave
Sat 2nd July	Classic Car Show From 1.00 pm onwards	Hosted by Dore Club, Townhead Road Free Entry
Sat 2nd July	Summer Concert Dore Church Hall 7.30 pm	Dore Gilbert & Sullivan Society Tickets £7, Tel: 2362299
Sun 3rd July	Well Dressing Service 3.00 pm	Dore Village Green Everyone welcome
Sun 3rd July	Afternoon Cream Teas 3.00 - 5.00 pm	Methodist Church Hall Methodist Ladies' Group
Mon 4th July	21st Family Fun Run Dore Rec 7.00 pm	Dore Primary PTA Details 07966 682328
Mon 4th July	Lord Conyers Morris Men 8.00 pm	Devonshire Arms Barbecue
Tue 5th July	Echoes of Laughter Talk by Trevor Page Dore Church Hall 7.45pm	Dore Ladies' Group Visitors welcome, refreshments
Wed 6th July	"The Scarlet Pimpernel" Village Green 7.30pm	Open air theatre presented by The Company. Picnics welcome.
Thu 7th July	Trees of Dore Meet Old School 10.00 am	An exploratory walk led by Tony Heathcote To book a place Tel: 2360002
Thu 7th July	Dore Male Voice Choir & King Ecgbert School Jazz Band	Dore Church Hall 7.30 pm Collection for charity
Fri 8th July	3-mile Health Walk Village Green 10.00 am	Led by Sue Lee Refreshments afterwards
Sat 9th July	Dore Scout & Guide Gala 2.00 - 6.00 pm	Dore Recreation Ground A great family day out
Sun 10th July	Festival Songs of Praise 6.00 pm	Christ Church, Dore Everyone welcome




**DORE SCHOOL
OF PERFORMANCE ARTS**
EST 1961

TEACHING THE
DANCERS OF
TOMORROW



DANCE SCHOOLS
Church Hall, Townhead Road, S17 3GA
Dore & Totley United Reform Church, Sheffield, S17 3QS
Call Kate Riley on 07790464770 or visit our website
www.doreschoolofperformancearts.com



DORE
Service Station
- A Family Business, Established 1954 -

At Dore Service Station we are proud to be known locally for going that extra mile.

- We offer a full range of dealer equivalent motor vehicle services including **M.O.T** tests, small and comprehensive **services** and **diagnostics**.
- We often have a range of **used cars** for sale and can provide a **car search service** for customers if they have a particular car in mind they want to purchase.
- We provide an emergency local recovery and **breakdown** service.
- Can arrange a **free reminder call** when your car's service and M.O.T are due.
- **FREE MINI VALET WITH M.O.T AND SERVICES**
- **FREE COLLECTION & DELIVERY***
- **Courtesy car** available.

Call to book your car in today or come in to speak to one of our members of staff, we'll be more than happy to help!

Dore Service Station Ltd. 12 Townhead Rd, Dore,
Sheffield. S17 3GA. 01142364691
doregarage@btconnect.com

DSL
Plumbing and Heating



5 Roney Crescent, Greenhill. Sheffield S8 7FS
All types of plumbing and gas work undertaken by your local reliable plumber.
No job too small
Ring now for a free competitive no obligation quote

Tel: 0114 283 9739
Mobile: 0782 8301808

dp GARAGE DOORS & GATES

Garage Door Problems?

Tel : 0114 236 2111



Supply and installation of new garage doors and gates



Repairs to existing garage doors and electric gates



MADE IN SHEFFIELD

DHF
Door & Hardware Federation
raising standards

Dore Café
Tel: 0114 236 4397

Dore High Street, S17

A family run business offering a warm friendly relaxed atmosphere.

Extensive range of Hot & Cold Food and Daily Specials freshly prepared and made daily, using locally sourced produce.

Open Mon-Fri 7-4pm
Sat 7.30-2.30pm

Hot & Cold take-out available
Value for money on your Dore-step
Find us on facebook

Dore Café
Tel: 0114 236 4397

Create a buzz this summer

In the Spring update from the Soil Association, a report by Professor Dave Coulson on research by the University of Sussex points out that “Decades of herbicide drift and fertiliser run-off mean that field margins are dominated by coarse grasses, nettle, docks and hogweed” and that the few remaining flowers are often contaminated with a mixture of pesticides so that bees, butterflies and other pollinators “consume a toxic cocktail of neurotoxins and fungicides when they drink the nectar”.

This is also happening to the hedgerows and around crop fields where farmers have been encouraged to plant wild flowers (are even paid to do it under environmental schemes) to help wildlife, but are potentially killing it.

Professor Coulson asks “What madness has led us to pollute our countryside with persistent, systemic neurotoxins?”

This does not just apply to the countryside, of course, as garden centres are full of chemicals to provide our plants with fertilisers, weed killers and insecticides, and the Policy Director of the Soil Association, Peter Melchett, also writes on the effect of chemical farming and says “How on earth did these toxic chemicals even get passed as “safe” by regulators in the UK and the European Union in the first place?”

These chemicals are also in the crops and, in my opinion and the opinion of many others, must be having an effect on human health, despite denials from farmers and manufacturers.

The Royal Horticultural Society is encouraging people to plant various native flowers, near natives and exotics to help pollinators by extending the time pollen is available. However, our pollinators were healthy and prolific for thousands of years before chemicals were introduced and foreign plants do not provide the best nutritional nectar for our native pollinators which managed



very well without an extended season before chemicals were introduced and contributed to climate change taking place at an unprecedented rate.

After a fairly successful native wildflower season last year and in spite of the upheaval caused by removing four small trees, the spring flowers are doing well in my garden. Winter aconites bloomed in January, primroses (which go on forever), lungwort and snowdrops in February, and the delightful lesser celandines and wild daffodils in March. I find that native flowers take a year or so to develop their potential, but, once established, to me they are far more beautiful than the cultivated varieties and are better for our pollinators. It is also so important that we don't divert our pollinating insects onto non-natives because this puts at risk the survival of the native species and our very special and very varied British ecosystems.

The new trees are looking healthy and are coming into bud and, having widened the borders around the lawn, I am hoping to increase the number of and variety of wildflowers this spring which will hopefully be successful and rewarding.

There are plenty of birds visiting the feeders, including a male bullfinch, and I was surprised to see a pied wagtail by one of the ponds recently. The bedding material I put into the fairly well-hidden hedgehog box in the autumn was dragged out of the entrance at the end of March so, presumably, at least one of the hedgehogs that came into the garden in the evenings last year has woken up. Good timing as April is the month for giving the house a spring clean!! There is frogspawn in two of the ponds this year and so things are looking good. Hopefully, we will have a lovely spring and a really good – buzzing!! – summer... well, we can hope, can't we?

Marian Tiddy

Open air swimming in the Derbyshire countryside

On 27th July Hathersage Open Air Swimming Pool will celebrate its 80th birthday. Not bad for a pool that took only 10 weeks to build, in a wet summer and without today's mechanical aids.

Living in Hathersage I swam regularly in the 1950s & 1960s, looking forward to the season starting the weekend before Whitsuntide and regretting it ending as soon as the schools went back after the summer holidays. I well remember what a treat we thought it was if the coke boiler managed to lift the water temperature to 68F (20C), but having got cold we could at least cluster round the asbestos flue pipe from the boiler to keep warm! We had in those days 1, 3 and 5 metre boards from which to jump, dive and generally enjoy ourselves and if we wanted a shower we could have one – cold water only. And how wonderful was that breakfast of bacon, sausage and eggs after swimming at 8 o'clock on a Sunday morning! Wonderful memories but was it really that good?

Nowadays the pool is open for over twice as long each year, from mid-March to the end of October with the water temperature a very comfortable 82F/28C, followed by weekend swimming in unheated water until the end of December when the pool finally closes for the



winter with a New Year's Day swim. During the summer there is regular monthly evening swimming with accompanying music, including a midsummer night's swim when you can swim throughout the night and watch the sunrise from the water. There are regular weekly sessions with a huge inflatable for children to enjoy themselves on and for something different the pool can be hired for a private party. But there are no diving boards any more (health and safety strikes again) and the asbestos flue pipe has gone although the showers now dispense hot water.

Maybe from my standpoint the changes have taken away the perceived romance of long ago but there can be no question that it is a much more pleasant experience for the vast majority of people – swimming in the open air in warm water with views of the Derbyshire hills. You can do this any day between now and 29th October when the heating will be switched off.

Fancy trying it? You can get details of opening hours etc. by visiting www.hathersageswimmingpool.co.uk, by phoning 01433 650843 or by picking up a leaflet from The Hare & Hounds.

Chris Cave

Apple Landscapes



**QUALITY SERVICE
AT AN AFFORDABLE PRICE!**

- Patios • Paths • Walls (including dry stone) • Turfing •
- Indian and York Stone Paving • Drainage work • Fencing •
- Garden Tidy ups • Railway Sleeper work •

No job too big or small • 10 years of advertising in Dore to Door

PHONE: 01246 237505 OR MOBILE: 07782 167540

www.applelandscapes.com

BMV
COSMETIC CAR REPAIRS

SCUFFED YOUR CAR?

Save up to **50%** on bodyshop costs!

**MOBILE CAR BODY REPAIRS
WE COME TO YOU!**

FOR A FREE ESTIMATE CALL CHRIS ON

07801 445 886

OR EMAIL chris@bmvcare.co.uk

www.bmvcare.co.uk

18 CRAWSHAW GROVE, BEAUCHIEF, SHEFFIELD, S8 7EB



Andy Lee Computer Services

All Repairs and Set-up

Virus removal, Slow PC, Start up errors, Lost data, Internet, Email, Home networks, New PC set up, Advice and tuition etc...



Friendly & reliable service

Home visits. 20 years IT experience

0114 230 7200 / 07906 525471

Rubbish Removed

- Most items taken -

Building & Gardening Waste, Single Items, Cookers, Washing Machines, Carpets, Settees, Beds, Radiators, Baths, DIY etc...

Clearance & Removal Service

Gardens, Garages, Sheds, Cellars, Lofts,
Full & Part House Clearances

Phone **WASTE SERVICES** for a
Free Quote 07860 210 156

Licensed Waste Carrier.

Identification & Environment Agency
Certification shown at the door

Often CHEAPER
than a skip,
and you don't
have to fill it!!

recycle
The possibilities are endless.

Need legal help
after the loss of
someone close?

Our fixed cost service can take away the worry.

In coping with loss, it is easy to be tempted to "keep yourself busy". But taking on all probate matters after someone has passed away (with or without a Will), means you are dealing with important and sometimes complex matters while grieving.

We can take care of the legal matters for you and take away some of the pressure. We are local to you, so can arrange to see you at your home, if that would help. We offer a personal service to guide you through the process from start to finish.

We are experienced and sensitive to your needs and we have a range of options, whether you want us to deal with just some of the issues or all of them.

For a free and no obligation discussion, please call
Jane Netting or Tom Mundy on 0114 267 5588

WRIGLEYS
— SOLICITORS —

Fountain Precinct, Balm Green, Sheffield S1 2JA
www.wrigleys.co.uk

Lexcel
Practice Management Standard
Law Society Accredited

Working to ensure
**Dementia
Friendly**

Wrigleys Solicitors LLP is a Limited Liability Partnership registered in England number OC318186 and is authorised and regulated by the Solicitors Regulation Authority and Financial Conduct Authority.



Dore Gilbert & Sullivan Society

I cannot believe how quickly time goes by. It seems no time at all since we began rehearsals for Orpheus but now the show is over and we move on to the concert season. The show was great fun thanks to Alan Wade our Producer and Nigel Martin our Musical Director, and over all too soon. Everything about show week turned out better than any of us expected with the comedy so strong we were even laughing on stage (not done - Oops!), the music, singing and orchestra excellent and the Can-Can danced wonderfully by the girls from Dore School of Performance Arts so cleverly choreographed by Kate Riley. The audience played their part too; they were wonderful and we thank them for their support. I can't write



Ladies who Can-Can: Harriet Ward, Katie Gage, Sarah Benson, Emma Gage and Sophie Norris

a review of the show – obviously, because I was in it - but I can pass on an e-mail comment I have just received from a lady called Kathryn Davies when someone said to her that we thought the audience was great - - - "I agree, we were a lovely appreciative audience! You were all fantastic! My cheeks hurt from laughing so much. Such an excellent show, the best I've seen. The energy on stage was super and the quality of the voices, orchestra, set, everything was outstanding. I didn't recognise some of you with your wigs! Well done and hope the rest of the week continues to be just as successful."

If you missed this musical French farce because you thought opera was too high brow, think again and don't miss next year's Mikado.

One of the audience was overheard to say that she had never been to see an operetta before and didn't know what to expect but thought that it was wonderful and would certainly not miss the next offering. So don't you miss out either, dear reader, be brave, operetta is definitely not grand opera; the music is light, tuneful and many pieces are well known and the plot is fanciful, if not ludicrous, but always funny. As an aside we also helped to raise considerable sums of money for four local charities during the week, these were CRY, Cardiac Risk in the Young; Western Park Hospital; The Archer Project which helps support the homeless in Sheffield and Sheffield Hospitals' Charity supporting those with blood related disorders in particular.

Now we look forward to our concerts in Dore, Nether Edge, North Anston and Worksop (we'll be going international next!). The Dore Summer Concert is part of Dore Festival and will be on Saturday 2nd July at 7:30pm in Dore Church Hall, Townhead Road when the programme will, as usual, consist of a royal mix of comic, light, popular and, no doubt, an odd opera piece.

These concerts are always popular and tickets are limited so don't wait too long before contacting me for them. They will be £7.50 each and are available from me on 236 2299. We would love to see you there.

Derek Habberjam

Knit for the Navy



Knit for Victory – The Story of the Dore & Topley Minesweeping Trawlers Comforts Fund
Published by Topley History Group,
www.topleyhistorygroup.org.uk
Available locally, price £5.

Pauline Burnett's latest offering is a bit of a trip to the gas-lit end of local history. During the Second World War a group of local ladies came together to knit garments and provide other 'comforts' for the men working on the minesweeping trawlers out of North Shields. They and memories of their activities would have been lost to us, were it

not for a box-file of correspondence discovered last year at a house which had been in the Grayson family (of Grayson's Solicitors) for eighty years. These had been stored away by Kathleen Grayson, a founder member and secretary of the Dore & Topley Minesweeping Trawlers Comforts Fund, which became one of the most productive comforts groups during World War II and raised over £110,000 (today's money) between 1941 and 1946.

Yet who remembers them today? Who even remembers the work of the minesweeping trawlers?

Keeping the shipping lanes open was, as we know paramount for the Royal Navy during the war. Later on, dedicated minesweepers were developed and deployed but reliance on these commandeered fishing boats continued throughout the war. They came with some of their original crew, supplemented by conscripts and regular Navy personnel, working round the clock in all weathers. They trailed steel cables to break the tethers of submerged mines, causing them to float to the surface where they could be dispatched by gunfire.

It was hard work, occasionally dangerous, usually cold and always wet. The men on the trawlers, at least in the initial stages of the war were inadequately supplied with protective clothing from government issues. Comforts groups were set up to fill this demand by converting government issue wool into stockings, jerseys, scarves and helmets. They also supplied books, games and cigarettes purchased from their fundraising activities on the Home Front.

It is the Home Front activities which are the centre of this book, as the author reveals correspondence between the Dore & Topley Fund and the layers of bureaucracy in the British military. Receipts, inventories and changes in the chain of command as the War moved from home defence to post-D-Day are all examined by the author to open up the way in which the Fund operated. By the end of their first year, the Dore & Topley ladies numbered over 100, and had dispatched 500 garments to the crews of the 28 trawlers working the east coast from North Shields. They had also sent other items from gramophones to boxing gloves, and numerous games including cards, dominoes, halma and the newly-released British edition of Monopoly.

I have to say that I enjoyed this book. It's not a long read at 80 pages, many of which have illustrations. But it's hard to think where it fits in terms of local history. That its subject is a piece of local history is undoubted, but sadly as the archive which inspired it contains official correspondence, too few of the local people involved are named. Aside from the formidable Mrs. Grayson and the few luminaries called around her to represent the public face of the charity, very little character comes out and there is not much in the way of local flavour, or the identities of the hundred or more Dore and Topley ladies involved.

Perhaps you remember your mother or grandmother talking about 'knitting for the Navy' when you were a child?

John Eastwood



PEAK ART

Charismatic Statement Clocks

Are you trying to fill that empty space on your wall with something truly unique?



Anna - Local Dore Artist

Web <http://peakart.co.uk>
Phone 01142363446
Mobile 07784633322
Email sales@peakart.co.uk
Address 44 Furniss Avenue S17 3QL



BRAMDALE

FIREPLACES

- ◆ **Fireplaces** Stone, Marble, Wood, Cast Iron
- ◆ **Fires and Stoves** Gas, Solid Fuel and Electric
- ◆ **Full Installation** Service Available
- ◆ **Gas Safe** Engineers
- ◆ **Hetas** Approved Installers

FREE SURVEYS

Newly Refurbished Showroom

Sheffield's Premier Fire place Centre

BRAMDALE FIREPLACES

630 Chesterfield Road, Woodseats,

Sheffield S8 0SA

Tel: 0114 258 8818

Fax: 0114 258 4442

www.bramdale.co.uk



FAWTHROP WILLIAMS

Chartered Accountants
& Business Advisers

For a full range of
accountancy and
taxation services
for individuals
and small businesses.

Contact: Russell Fawthrop BSc FCA
14 Causeway Head Road,
Dore, Sheffield S17 3DT

Tel: 0114 236 2696

E-mail:

russell@fawthropwilliams.co.uk

Visit our website:

www.fawthropwilliams.co.uk



Member of the Institute of Chartered Accountants in England and Wales Practice Assurance Scheme
Regulated by the Institute of Chartered Accountants in England and Wales
for a range of investment/business activities

Carter Knowle Computing Limited

For friendly and professional help and advice on home computing problems:

- Emergency System Recovery
- Networks (wi-fi, home broadband)
- Email, Internet Security (Anti-Virus / Firewalls)
- Transfer of data between old/new PCs
- Set up of new equipment (printers/scanners etc)

With reasonable and competitive rates please contact:

Rob Edwards on 07711 718455
rob.edwards@CarterKnowleComputing.co.uk
www.carterknowlecomputing.co.uk



International Freight Forwarding Specialists

International & UK freight forwarding
on your doorstep in Dore & Totley

Call us anytime for a competitive quote for your Export,
Import & Domestic consignments by road, air and sea
on 07946 093129 or landline 0114 283 5936

For all your Dore to Door shipments

Please visit our website www.freightdespatch.com for
details of all our services

Registered office: 130 Baslow Road S17 4DQ

Tuesday is chippy night at The Castle



I was happy for my first assignment in Dore to Door, to follow our Editor's suggestion and visit The Castle at Bradway. It has been recently refurbished and turned into a self-proclaimed gastro-pub, with a large dining area and smaller tap-room. The décor was tasteful if typical of the gastro-pub, with exposed stone mixed with lots of wood, walls in neutral colours and any paintwork in a "Farrow and Ball" style palette. The overall feel was comfortable and informal and very friendly.

Four of us booked a table for an early dinner, and were greeted and seated immediately and our drinks order taken by the two very friendly members of staff. Suspicions arose however with the length of time it actually took to receive the drinks. When they arrived the pint of London Pride was perfectly acceptable as was the house dry-white wine.



Scallops

Tuesday is "Chippy-Night" at The Castle, with cod, haddock and fish cakes featuring on the specials board, all served with chips and mushy peas. In addition the specials included scallops with black pudding fritters and pea puree, and venison lasagne. I opted for the "small" portion of scallops as a starter. The others chose crispy chilli squid and prawns with sweet chilli jam, and a spinach and haloumi pakora with raita, with one of our party abstaining in anticipation of dessert. The wait for the food was significant if not quite annoying. The waitress did apologize, explaining that that there were only two staff on and it was surprisingly busy. However, the two who were working remained calm and very friendly, and repeatedly apologetic.

The aforementioned "small" scallop dish came with six large and perfectly cooked scallops with cubes of deep fried black pudding fritters, all on a green sea of pea puree, dressed with rocket and a swirl of balsamic. At £11 it was on the pricey side, but I really like the combination of scallops and black pudding and I wasn't disappointed. The additional texture of whole peas in the puree wasn't to my taste, although the flavours of the dish were excellent. The reports on the chilli squid and the pakora were both positive. I can testify that the squid was perfectly cooked and the prawns were succulent, served with a chilli sauce that had just the right

level of heat. Being my first time, I made the error of not tasting the pakoras before they were finished, and I have to rely on the praise of my fellow diner!

For main course I decided to test out a pub favourite – steak in ale pie. My partner had the venison lasagne from the specials board and the others ordered the Castle Inn Burger and a half rotisserie chicken. The steak in ale pie came with a thick suet pastry top, which was a wonderful surprise as I expected the standard puff pastry. The dripping roast potatoes, which were about the best I have ever tasted and the pie gravy were a perfect accompaniment. I asked for veg to replace the mushy peas. The resultant garden peas, green beans and cabbage came perfectly cooked and were, I would suggest a better option. The pie itself was huge with a diameter similar to a decent side plate, well filled with tender beef, ale gravy and the occasional carrot. An excellent example of the dish, and great value at £12, although not for the faint hearted. I accompanied the main course with a large glass of the excellent Rioja Finca do Oro at £6.50.

A word about the rotisserie chicken, which is a novel touch to the menu. The rotisserie itself is in plain view of diners, and the menu offers half or full chicken in a spice rub at £12 and £24 respectively. The chicken is served with a choice of 3 from 10 or 6 from 10 side dishes plus one or two sauces. The half chicken was a decent size and crispy red pepper rings, corn on the cob and hand cut chips accompanied, with a pub gravy. Unfortunately, they had run out of burgers, which was a surprise at 7pm on a Tuesday, and the choice was changed to the beer battered fish with chips, scallop potato and minted mushy peas. All perfectly acceptable, although something of a disappointment to the person who wanted a burger. We did have the price reduced to the same price as the burger however, which was a nice touch. Lastly the venison lasagne. The ragu was rich and dark, with really good béchamel sauce and excellent flavour throughout. The side salad was crisp and well dressed, and the garlic flatbread was really tasty and nicely different to the normal garlic bread accompaniment.



Lemon meringue pie

Desserts are £5.95 each (with a £2 supplement for cheese) and we chose the lemon meringue pie with raspberry sauce and sticky toffee pudding. Although the steak pie nearly saw me off, I was persuaded by the waiter that the blueberry cheesecake ice cream was worth the effort, so I went for it and wasn't disappointed. The other desserts were good if not exceptional and we finished with excellent Café-ology coffees.

The whole bill for four was £117 not including tip. This included a pint and three glasses of wine. While it is probably not an amount you would want to pay every week, there is enough on the menu in terms of variety and quality to make a return visit worthwhile even if it might need to be a special occasion.

Hendo Nagasaki

*The Castle Inn, 1 Twentywell Road, Bradway S17 4PT
Booking: 0114 236 2955, website at www.thecastleinnbradway.co.uk.
Twitter: @castlebradway. Open 11am-11pm daily; food Mon-Sat 11.30am-9pm, Sun noon-7pm.*

Est 1971
**R.S. HEATING
 & BUILDING CO.**

Heating division

Experienced installers of all types of domestic boilers.
 Authorised installers of Vaillant, Worcester Bosch and Glow worm boilers.
 Systems fully granted.
 Full after sales service dept.

Plumbing division

Bathrooms, showers, wet rooms, individually designed washing rooms for the disadvantage a speciality.
 A complete service including design.

Building

Kitchens, complete House renovations including general building, joinery, plastering, tiling, electrical, decorating etc.

88 Sunnyvale Road, Sheffield S17 4FB

Tel: 0114 2364421

e: enquiries@rshb.co.uk
 w: www.rshb.co.uk



I'm Your Man

*Furniture looking tired?
 Need a French Polisher to sort out
 that party stain or scratch?*

Then I'm Your Man

- Cabinet Making - apprentice served City & Guilds FTC
- French Polishing
- Antique Furniture Restoration
- Traditional Furniture Repaired-Restored

*Thinking about a few change
 around the house*

Then I'm Your Man

- Domestic Joinery
- Built-in Wardrobes
- Bespoke Kitchen Design & Manufacture
- Bathroom Makeovers

For advice or assistance, give **Tony** a call

- Honest hourly rate
- Larger jobs by quotation

**I'm Your Man, The Old Tool Room, Unit H4,
 Sheafbank Business Park, Sheffield S2 3EN
 Tel: 0114 262 1714 Mob: 0776 8496981
 Fax: 0114 296 2384 email: tony@tmt.co.uk**



J S JACKSON & SONS

of Dore

Plumbers & Central
 Heating Engineers

Tel: (0114) 258 8928

Mobile: 0771 373 0770

24 Hour On Site Quality Care



Park Veterinary Hospital

- Extensive medical & surgical facilities
- State of the art diagnostic equipment
- Vet & nurse appointments always available
- Monthly instalment healthcare plans
- Competitive prices
- Friendly advice always available



www.parkvethospital.com

24 Abbeydale Rd South, Sheffield, S7 2QN

0114 236 3391

Takdir

Indian Take-Away

Opening Hours:

Evenings 5pm -10.30pm
 7 days a week
 Including Bank Holidays

Free Home Delivery

within 3 miles radius
 minimum order £10

We cater for parties and
 Deliver right to your doorstep

Tel: 262 1818

339 Ecclesall Road South
 Parkhead, Sheffield S11 9PW

www.takdirtakeaway.co.uk

Television and Video recorder repairs

City and Guilds London
 Inst Fully qualified.
 Over 25 years
 professional experience.
 For prompt reliable
 friendly service ring
0114 287 6806
 and ask for Richard.
 Ex Bunker and Pratley



INDEPENDENT ANTIQUE & FINE ART AUCTIONEER & VALUER

- Make more when selling your antiques
- Save on your professional insurance and probate valuations
- Single items to complete contents

Selling extremely well at the moment are:
 Wristwatches, Jewellery & Handbags
 Retro, Modern Art & Furniture and Chinese Items



Main St, Great Longstone, Bakewell, Derbyshire, DE45 1TA
 Tel: 01629 640210 Mobile: 07870 238788
 Web: www.vivienmilburn.co.uk

WINDOW SPEC



- Windows
- Doors
- Porches
- Replacement Units
- Composite Doors
- Bi-Fold Doors
- Conservatories
- Roofline
- UPVC Specialists

25 Years Experience

0114 236 9031

07729 174080



member FENSA registered

www.windowsspec.com

84 Bushey Wood Road, Sheffield, S17 3QB

Bowling here really is plain sailing!



Abbeydale Bowling Clubhouse

“Ang on, lads, I might have to sort out the Spanish fleet but I’m damned if I’m going to do it before I’ve finished my game of bowls.”

That might not be a word for word quote from Sir Francis Drake in those pre Sky News days of 1588 but you get the gist of what he (allegedly) said on Plymouth Hoe. And if one of England’s nautical heroes rated the game so highly it is no surprise that it has enjoyed such longevity, possibly being played as long ago as the 12th century.

Today the sport is played in over 40 countries with more than 50 member national authorities, and Sheffield has its fair share of Crown Green Bowls Clubs. On our doorstep is Abbeydale Park Bowls Club, its single green neatly situated on the right at the top of the long drive of the Abbeydale Sports Club, opposite the Badminton Hall.

Whilst you can’t see galleons in full sail or even a hint of a choppy Solent from the green, it is a picturesque, tranquil place that is well cared for. Add in a clubhouse with facilities, outdoor seating and around 120 members who will make any newcomer welcome we have a jewel in our midst for anyone who wants (very) gentle exercise with a dash of Drake-like duelling.

But that hint at ‘doing battle with an adversary’ is perhaps unfair because this is very much a ‘social’ club. There are no league teams at this club and players are here to do just that for the enjoyment of it. Of course, abilities vary and they all want to win, but primarily it is a pastime – with plenty of ‘social’ for good measure.

Once a male only club, ladies were first invited as members in 2005 and now there are any number of events, dinners, parties and social evenings throughout the whole year.

Trevor Davies, who joined 15 years ago, says, “Falling numbers was one of the factors for the change and reaction was fairly mixed as I remember, but gradually it became more accepted and now the club would not be in its current stable position without our lady members.”

Women now comprise almost half the membership, the cost of which is £125 per year for almost limitless bowling throughout the season which runs roughly from mid-March to mid-October. Guests - or those who wish to try it out first – can play on three occasions for free before committing themselves and financial consideration is given to those who join in mid-season.

Members can play seven days a week; mornings (from 10am), afternoons (from 1.15pm) and in the evenings, dependent on conditions and time of year. Trevor, who took up the game when

the time came to ease back on a lifetime of more active sports, is perhaps typical of the membership:

“It was a good way of filling some of my leisure time when I’d retired, a logical step. I was always a sports addict, playing rugby, tennis, cricket and athletics, so when I got older I needed something to occupy me, to stop me vegetating really.

“Now I play six days a week, purely because I want to – nobody has to. I still enjoy it immensely and get frustrated if the weather intervenes. It keeps me active and gives me a level of fitness despite my dodgy knees!”

Methinks Trevor is too modest. There is a handicap system in place to balance out abilities and Trevor, being on 11 with a maximum handicap of 12, must bowl a mean bowl!

There are no membership age restrictions but it has evolved naturally to the more mature end of the market (even Drake was 48 when he battered the Armada!). Although currently the age range is from around 60 to a still playing and sprightly 92, newcomers of any age are welcome, but children playing must be accompanied by a responsible adult

Useful things to know

- * **Bowls/jacks can be borrowed**
- * **This is crown green – not flat**
- * **Bowls have different weights**
- * **Games consist of points – or ends**
- * **Bowls cost around £90 per pair**
- * **Flat soled shoes only!**
- * **Bowls are known as ‘woods’**

For the more competitive there is a programme of friendly matches and competitions but not so many that they deprive members of the opportunity to play amongst themselves.

The accent is definitely on playing for pleasure, exemplified by the rule that as players arrive for any session they form up accordingly with whoever else is ready to play. As Trevor puts it: “You don’t need to have arranged with anybody in advance to get a game – you know you will get a game.”

If bowls was good enough for a national hero, maybe it is good enough for you? But be warned, the able bodied seamen and women at Abbeydale would be up for a fight – that 92-year-old delayed his hip replacement operation in order to be fit for the new season!

*For more information contact Richard Bertram on richard.bertram@btconnect.com or on 0114 289 1423.



Three members get down to serious business

Andy Pack

Peak Hearing

INDEPENDENT HEARING AID
ADVICE, SALES, REPAIR
and AFTERCARE

Qualified and fully insured Micro-suction
ear wax removal service.

Home visit service available.

The very latest technology with a 5 year warranty.

Ring Ian on 01246-433955

We can help you with:

- Back pain
- Neck and shoulder pain
- Sports injuries
- Knee and hip pain
- Arthritic pain

Please call in for a no obligation chat to see how we can help you

Tel. 0114 2369315

www.relieffrompain.co.uk



12 Causeway Head Road, Dore, S17 3DT

Hathersage swimming pool

2016 HEATED SEASON

Saturday 19th March to Saturday 28th October



1936 - 2016

**Celebrating 80 years of
Hathersage Outdoor Pool**

**With water heated to 28°C you can enjoy
swimming outdoors whatever the weather!**

Hathersage Swimming Pool, Oddfellows Road Hathersage, Peak District, S32 1DU
www.hathersageswimmingpool.co.uk Tel: 01433 650843
(All events held at the pool are run by King George's Field Trust.)



Sheffield
Sustainable
Kitchens

Bespoke.

Quite simply, thoughtful design, quality materials, made to measure and built to last.

Find out if we can help create your perfect kitchen.

Call 0114 250 9078
or visit www.ssk.uk.com



Repair of paths on Blacka Moor needed



We have had a very wet winter and the photo shows serious erosion on one of the paths on Blacka Moor. The Council and Sheffield Wildlife Trust had surfaced this path a few years ago using urban demolition waste, a practice thankfully now prohibited by Natural England on this land. However the ruts have since been repaired using the same material. Perhaps instead of money being spent on new paths being surfaced, this unsightly damage should first be

repaired properly by removing this thick layer of urban waste and replacing it with the required crushed stone. The waste that swilled down has also been deposited on top of a more natural path, thus contaminating that too. The crushed stone paths not only look appropriate on this land but have weathered the winter far better with much less erosion evident. But this needed work is not in the management plans for the site so won't be happening soon.

Environment at Dore and Totley Station



Dore and Totley Station is unique because in terms of its high usage and massive catchment area, it could be classed as an urban station. However it has a unique and stunning rural setting with its Victorian heritage still evident. This setting makes using the station a pleasant experience and it is refreshing to come home to. The sketch shows the proposed new bridge that Network Rail is planning to build here. Interestingly they have chosen to describe the station as 'rural' by claiming low usage, in order to justify giving us the minimum of new facilities, but as 'urban' to get away with a shockingly modular design for the bridge and new waiting shelter. DVS will be making representations at the public hearing to attempt to get a better quality design that we think is appropriate for our station. However our case has not been helped by Sheffield City Council not commenting on the design when they were consulted by Network Rail, despite us asking for their support. We have to hope the hearing inspector thinks our way.

Dawn Biram

Whirlow Hall Farm Archaeological Project



The Archaeological Heritage Lottery funded project at Whirlow Hall Farm (see *Dore to Door 121*) has started with a bang! Theory classes in geophysical methodology followed by practical work, and fieldwalking theory and practice have already in the space of a week turned up some extraordinary information and artefacts. The Neolithic to early Bronze Age arrow head in the photograph is particularly special because it both indicates the extremely long evolution of life at Whirlow and our local area, and also points to the possibility of something

even more exciting awaiting us. The arrowhead (left) is a complex high status item.



Fieldwalking where the arrowhead was discovered along with many other flint tools.

If you want to become involved in any aspect of the project please get in touch with Dorne Coggins at md2.coggins@talktalk.net. For those of you with Facebook check out "We Dig Whirlow" where you can see photos and comments about the project and also make contact. The dig itself starts on the 20th June and lasts for three weeks. You can come along for a half- day session or longer, and you do not have to have had any previous experience. We can give you more information about what to bring later. The dig is completely free, and you are able to access refreshments at Whirlow Hall Farm's own café which will be open all through the period of the dig.

Dorne Coggins

Please mention Dore to Door when replying to advertisements

A1 Tiling, Plumbing, Plastering & Complete Bathroom Installations

Tel : 07738 688 807

- All Plumbing Leaks, Bursts & Blockages
- Taps, Showers, Radiators Etc
- No Job To Small
- Home Improvements & Maintenance
- Underfloor Heating, NVQ Qualified
- Reliable, Fully Insured & Guaranteed

www.A1tilingandplastering.co.uk
25 Five Trees Ave, Dore, S17 3LW

Abbeydale

The premier Sheffield sports venue that offers so much more

Birthdays Weddings Christenings
Corporate Dinner

All Inclusive Party Package
or a bespoke and unique event

Let us make it one to remember

Abbeydale Sports Club, Abbeydale Road South,
Sheffield S173LJ
www.abbeydalesportsclub.co.uk Tel: 0114 2367011

Broken Garage Door in Dore

Same day Repair in most cases

New up/Over Doors

Police/Insurance Approved

Insulated Roller Doors Supplied and fitted

Existing Doors Automated

01142935065 07792776130

DireKt Doors

Where customers come 1st



G9 DESIGN ARCHITECTS
www.g9design.com

G9 DESIGN ARCHITECTS

South Yorkshire and Doncaster
LABC WINNER

Winner of best domestic project

NO OBLIGATION INITIAL CONSULTATION:
0114 235 2335
GARY@G9DESIGN.COM



Whittington Goddard Associates Ltd provide independent financial advice from our offices in Sheffield, South Yorkshire. Whittington Goddard Associates Ltd's services are tailored to meet a client's current circumstances, aims and objectives.

Investments & savings

Pensions & retirement planning

Life cover & income protection/critical illness cover

Equity release

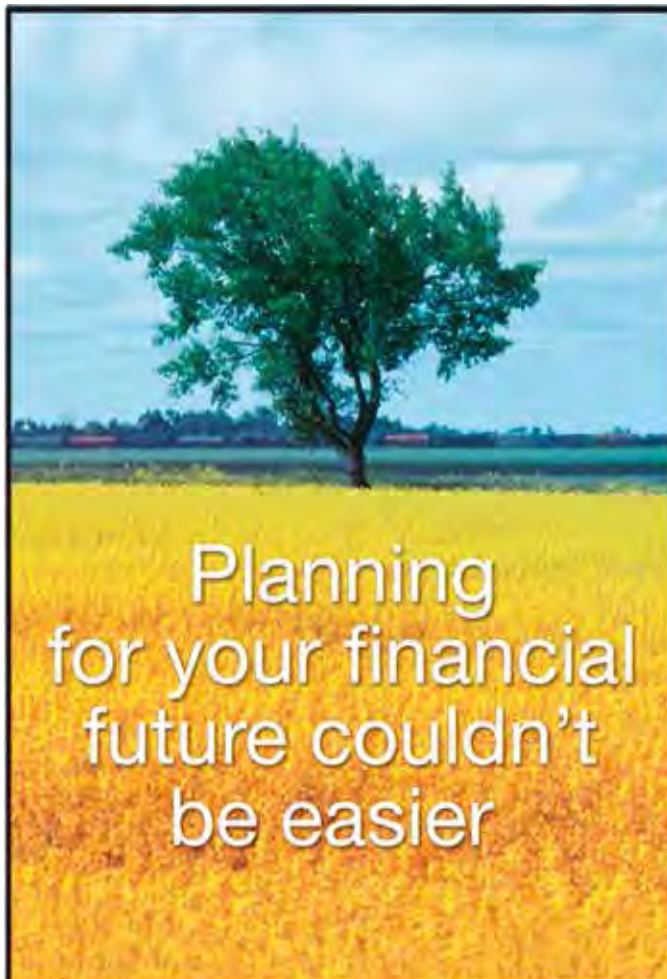
Care fees planning

Home reversion plans and lifetime mortgages are complex products. To understand the features and risks, ask for a personalised illustration. We are small enough to care about your needs - but big enough to cope with all your requirements.

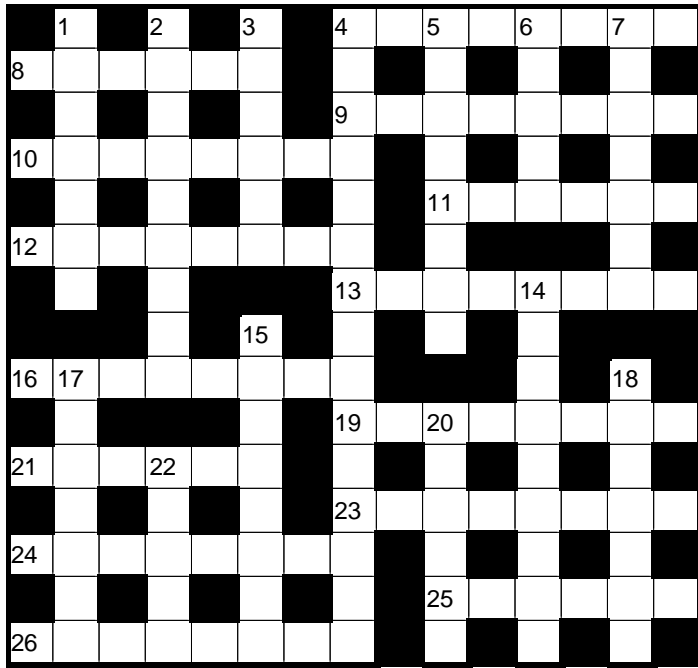
Whittington Goddard ASSOCIATES LTD

Whittington Goddard Associates Ltd is Authorised and regulated by the Financial Conduct Authority.

26 CAUSEWAY HEAD ROAD DORE SHEFFIELD S17 3DT
Telephone: 0114 235 1623 Fax: 0114 262 0438
Email: enquiry@wg-associates.co.uk
Office hours: 9.00 a.m. - 5.30 p.m. Monday to Friday
www.wg-associates.co.uk



Planning
for your financial
future couldn't
be easier



Across

- 4. Quick to give backward Frenchman clip (8)
- 8. Position for the football team (6)
- 9. It's superior to ignore blow (8)
- 10. Victoria, perhaps going after mine brings risks (8)
- 11. Nearly all delayed when going by way of the country (6)
- 12. Done with butter, I have beef (6)
- 13. Number cut back to make the game (8)
- 16. Reader has shift-work in prosperity (8)
- 19. One who sells out to old carrier (8)
- 21. Drum boy has short dance (6)
- 23. Throw away fish and get some other food (8)
- 24. Company included North trail cultivating herb (8)
- 25. Transformation of reluctant worker going away to be one who makes tableware (6)
- 26. Consists of popular indications about daughter (8)

Down

- 1. Appearance of a Royal opponent (7)
- 2. Drone has case of fleas with tree grub (9)
- 3. Heavenly body, but not right girl (6)
- 4. New York's main court venue being embarrassed by grasslands (8,7)
- 5. Drink tea for instance, to succeed (8)
- 6. Wader, for example gets 50% return (5)
- 7. Flight of fantasy not democratic (7)
- 14. Compassion about large mountain range for multitude (9)
- 15. High return in mixed school is sorted (8)
- 17. Once starting to hold down belief (7)
- 18. Near to the German snake (7)
- 20. Rock coming from back-up to vermin (6)
- 22. Scrap British tool (5)

Crossword compiled by Mavis

Answers will be published in the August issue

Solution to our Spring crossword:



Dore Dodderers



I was assisting a neighbour with his shopping a few days ago. He's nearly 70 but very fit and well except for a strained Achilles tendon that was making walking painful.

Trying to be helpful I suggested he might like to try recuperating on a cruise but he wasn't very receptive to this idea. He'd heard about how these are full of women looking for eligible men and he was horrified at the thought of having to fend off hordes of rampant women.

He says he's capable of looking after himself and his house (can cook, iron, use a washing machine and a vacuum cleaner), solvent and not bad looking for his age (his words, not mine) and consequently very eligible, so he has to be cautious about engaging women in conversation in case they get the wrong idea.

I suggested in that case he might try Internet dating as it's easy to control your profile and filter out unwanted replies. His response was to say he had already considered that but ruled it out. With his profile (see previous paragraph) he'd have to invite interested responders to form an orderly queue. Talk about a positive self-image. Anyway, if this sparks your interest please do not write to me for his contact details.

After that little exchange I turned the conversation back to his infirmity. Apparently the Achilles problem has made him think about how he will get around if he is unable to walk into the village. His solution is to get a mobility scooter and form a mobility scooter biker gang so he and his mates can roam the village terrorising teenagers before ending up in the Dev. He's even started to design their outfit (in leathers of course) and logo. He showed me a picture of the mobility scooter he's thinking of buying and I've included it here for you to see. Apparently he's going to fit speakers so he can play music from his iPod while he's driving around: Born to be Wild (Steppenwolf) and Voodoo Chile (Jimi Hendrix) being his favourites.

At this point I helped him take his shopping into his house, wished him well and returned home to feed the cat.

And with that I'm off for a good soak in the bath and shave my legs.

Yours, as ever,

Miranda Chief

Sheffield Citizens Advice Bureau

Every Tuesday 10am-noon, Totley Rise Methodist Church.

No appointment needed.

A drop in free and confidential Service. Advice on legal, financial, employment, benefit and any other matters.

It's only **30p per word** to promote your service locally. Just call the advertising phone **07583 173489** or email **advertising@doretodoor.co.uk**.

LOCAL RETIRED NURSE for occasional care in your home, assistance to shower, household chores for example. Please call Angie 07837320209

BICYCLES WANTED cash paid for your old racing or road bike any condition 0114 262 0699

PERSONAL TRAINER: Health, fitness and weight loss programmes designed to meet your goals. All levels of fitness catered for. Phone for a free no obligation consultation. Suzy Newson 07825 167411. www.trainwithsuzy.com

PLUMBING, HEATING & GENERAL HOME MAINTENANCE. 35 years qualified tradesman. For free estimate and competitive rates call John Ford on 0114 274 5061 or Mobile on 07761 569068

COTTAGE ACCOMMODATION in Dore short term, especially suitable for visiting friends and relatives; Phone 236 6014

HORIZON ELECTRICAL All aspects of domestic electrical work. Competitive rates. Phone Totlely 236 4364

FRENCH TUITION: falling behind at school or interested in learning French at home with a native and experienced person living locally? Call Anne on 2353297 or 07796326752. Beginners to advanced also Friday am conversation group in Dore.

DOG TRAINING – Chris Clifford One to One, qualified member of PDTI. Call me 07875416898

ROMAN BLINDS, curtains, cushions and more. Please call to discuss your requirements: 01433 623225

PATIO BLASTER. Block paving renovation specialist. Call Dave Andrews on 01709 877412 or 07979 431133

PROPERTY MAINTENANCE AND IMPROVEMENT. All aspects including painting, tiling, flooring and joinery, decking, fencing, pointing, guttering and stove fitting HETAS approved. Also garden work and unusual jobs. 12 years in business, local. Call Jamie on 01142353297 or 07786906693

PILATES CLASSES run by experienced Physiotherapist/Pilates instructor at Dore and Totlely URC on Thursdays 1.30-2.30pm, 5.15-6.15pm, 6.15-7.15pm. Please call Emer for more information on: 07792 422909

COMPUTERS FOR BEGINNERS MADE EASY. Learn to use your tablet , PC or mobile phone, from a local tutor on 1to1, in your home, at your pace. One off or ongoing classes. Call Anne on 01142353297

CHIROPODY Home Visits Amanda Ross FSSCh.MBChA.DipPodMed Tel: 07904 919775

GAS BOILER SERVICING AND REPAIRS, Gas Safety Checks, Heating and Plumbing. Gas safe registered. Free estimates and a local friendly service. Please call Adam on 07725040275

MP LOCKSMITH Burlington Road, Dore. All locks repaired/replaced. Upgrade your locks to Anti snap locks for insurance purposes. Mark Pidgeon 07752 069013 / 0114 3271824

HOLIDAY COTTAGE in Sidmouth, East Devon. Sleeps four, centrally located with private parking. Good choice of pubs and restaurants, level walk along beach and promenade. £400 per week. Tel. 07713 251441 or 01905 333286

JEWELLERY MAKING CLASSES, COURSES & PARTIES at Abbeydale Industrial Hamlet Studio. 8 week evening course starting January. One Day Workshops. Birthday Parties ages 8+. Private Tuition. GIFT VOUCHERS - perfect present for Christmas. Fully qualified experienced tutor. www.budgiegalore.co.uk email info@budgiegalore.co.uk 07925 548898

MORE CLASSIFIED ADVERTISEMENTS Can be found on page 43..



The Fibre Glass Specialists

A Permanent solution to your flat-roof problems:

- No seams, cracks or leaks
- No stones, moss or lichen
- Tough enough for balconies
- Available in a range of colours
- Can incorporate insulation to reduce heat loss
- We supply a superb product guaranteed to last
- 30-year durability (rated by the British Board of Agreement)



Call us today to arrange a FREE no-obligation quote

Tel: 01142 362333

www.wraggroofing.co.uk



Comprehensive Building Work

- Extensions •
- Loft conversions •
- Slating & tiling •

• We also supply and fit uPVC Soffits, Fascias and Gutters •



Crocus Homecare

Where reputation is everything



Care and Support in your own home

Ring Debbie Crowhurst on 01629 812874 or mobile 07810 395 993
or for more information please visit our website: www.crocuscare.com

Brunsmeer AAFC

Our season was extended as mentioned in my article in February, and all fixtures were completed by April 24th.

In view of the weather lots of fixtures were postponed and rearranged. With a deadline to meet, a number of teams were playing every two or three days to avoid non-fulfilment penalties. It is pleasing to report that everyone has had an enjoyable season and are now busy planning to attend summer tournaments.

Our Presentation Nights took place on April 15th and 29th at Woodseats Working Men's Club, both the evenings were well supported where each player received a trophy in recognition of their season.



Helpers prepare tea and stickies in the newly-renovated cafe area

Café/Changing Facility

We are very pleased that our President Anne Brebner, Pete Brebner, Director/General Secretary and Ruth Darrall and Lynn Tasker, Trustees of the Dore School and Charity Land Trust visited us on April 12th to see the recently refurbished facility. The new facilities were built at a total cost of some £20,000, a substantial amount of which was underwritten by a grant from the Football Association.

We have received great support from the Trustees, after all the years it is nice to see a fit for purpose facility commensurate to the surroundings and the number of participants involved with Brunsmeer AAFC.

Over the summer we will continue to try and improve and maintain the facilities at our ground with the main focus now being on drainage as unfortunately further money is going to have to be invested in view of the high number of matches having to be postponed and rearranged over the season. We are involved in the Sheffield and Hallamshire County Football Association and together with external ground and drainage specialists we will try and obtain guidance and assistance.

I hope to be able to report back to you an update in this respect in the next edition.

Mercia – Bellway Homes Building Project

I am fully aware that people are not doing as they are asked in relation to parking on match days, I would like to reassure readers that all Brunsmeer users are told to advise parents and our opponents that cars must be parked in King Ecgberts School car park.

Our sincere apologies to those residents who have been inconvenienced by individuals not listening, we will continue to beat the drum in preparation for next season which commences in September.

Kind regards.

Paul Shepherd, Chairman

Emma needs a hand



Hi, I'm Emma – I'm an international FEI1* (Federation Equestre Internationale) endurance rider living in Dore. Endurance riding is long distance horse racing. It's like flat racing only instead of galloping for two minutes on a soft, flat track, we gallop for 6 hours or more across country, tackling challenging terrain at speed.

Of course it wouldn't be called endurance if you didn't have to 'endure' and so I have specially modified horse tack to minimise blisters and sores for me and my horse (think sheepskin everywhere!) I have an assistance vehicle and crew that meet up with me on route to provide food and water for the rider and horse and every 40km the horses have a 40 minute 'pit stop' to rest, eat, go to the toilet and have tack swapped to fresh ones. Oh, I forgot to mention, the races are between 80km and 160km long!

I've always had a passion for horses but didn't get a chance to fulfil my ambitions until I left home at 18... with £200 to my name. I was determined and driven and worked three jobs around the clock to save up some cash. I bought a wild, unmanageable four year Arabian and went from there. Three years later with a lot of blood, sweat and tears and my 'crazy' Arabian is now a mature performance horse at the top of his game. I've also fallen in love with a Yorkshireman, live in a beautiful cottage in Dore and work evenings in the Peacock Inn, Owl Bar to make ends meet (if you see me, don't be afraid to say hello!). Still, I'm struggling to meet the costs of international competition.

The 2016 season has already got off to a flying start for me with a win in an 80km race in Milton Keynes in March and a successful 80km qualifier ride in Sherwood Forest. Last year we were offered a place on the England Squad but finances meant I had to turn it down. My aim for this year is to regain my Squad place and to achieve a top 20 placing in a CEI1* abroad.

Currently, I don't have any reliable horse transport to get to competitions. I'm appealing to local Dore businesses to consider sponsoring part of a horse trailer, in return for vehicle signage. I travel from Scotland to the South of France and everywhere in between to compete – that's an awful lot of exposure! If you have any ideas or suggestions to help me achieve my aims please get in touch: slosh.bottles@gmail.com or www.facebook.com/emmadanielendurance

Emma Daniel



CW Roofing
New Roofs • Repairs • General Maintenance

Telephone: 0114 236 3455
Mobile: 07966 011825
Dalewood Road, Beauchief

Personal and friendly service

From a small repair to full installation of new windows and doors to your property.....

With over 20 years experience and expertise in supplying and installing quality uPVC windows, doors and conservatories Darren Young is trusted by homeowners and commercial customers to deliver value and service.

'Steamed up' Double-glazed units replaced

Quality uPVC double glazing
Conservatories and porches
Repairs to locks, hinges and handles etc

Darren Young
windows, doors & conservatories

Call me now for a FREE quotation

0114 274 7252 or 07702 906 886 mobile 



David and Cath offer a warm welcome to all

- Cask Ales
- Sky Sports & BT Sport
- Quiz Night Wednesdays 9.30pm
- Large Beer Garden
- Function Room Available
- Family Room

 **devonshirearmsdore**

sell your car simply

As Dore residents, we are happy to visit your home for a no obligation quotation for the purchase of your vehicle



City Road Cars

Tel: 0114 239 9994 9am - 5.30pm
mobile: 07775 941110 anytime
cityroadcars.co.uk
sales@cityroadcars.co.uk

482 City Road, Sheffield S2 1GD

Why would you want to work with anyone else?

- Individually Structured Fees
- All fees are agreed in advance
- Complete Accounting and Tax Solutions
- Local Presence and National Strength
- Cost Effective Fees and Cash-Flow Benefits
- Straight & Direct Communication

For your free initial consultation with your local Dore based

AIMS Accountant contact:

MARK RANDALL BA (HONS) FCA

T: 0114 275 0461 / 07908 592 007

E: mark.randall@aims.co.uk

W: www.markrandall.aims.co.uk

AIMS® ACCOUNTANTS
FOR BUSINESS

There's going to be an Inquiry!

It should have started on the 10th May at Abbeydale Sports Centre and could take two to three weeks. A new second platform may be operational by December 2018 with more trains - and there'll be no more Pacers.



Queuing to get tickets before the train departs

The Northern Powerhouse is trying to improve the rail connection between Sheffield and Manchester city centres. In theory 15 minutes might be shaved off today's quickest journey times – in 20 years by HS3 if we're lucky!

In the meantime, passage of the proposed Network Rail (Hope Valley Capacity) Order should allow more limited construction work to begin in the summer of 2017, enabling an improved service to run from December 2018.

That's the plan if the project is approved in its entirety by the Inspector for the Department for Transport, and Network Rail can accommodate any changes he may require. If a new loop at Bamford is not approved reinstatement of the second platform at Dore won't go ahead either.

Originally there were to be passing loops at Chinley, Grindleford and Dore to hold slow moving trains, mostly freight, while fast trains sped through. That was to allow four fast services an hour. A passing loop at Dore is to hold trains coming from the Hope Valley before they move onto the mainline towards Chesterfield. At present any freight train waiting to go south has to take the Dore South curve below Poynton Wood. If the mainline isn't clear it blocks the Manchester bound track.

That plan allowed for stopping services each hour, with longer and additional freight services. After consultations it was decided that three longer fast services an hour were enough, thus enabling the loop at Chinley to be dropped from the scheme. New longer platforms at Dore should take six-coach trains to ease overcrowding on the Manchester line

There were a lot of objections in the Hope Valley. The Grindleford loop idea was abandoned and should be replaced by one at Bamford.

FoDaTS is broadly in support of the scheme. Without it we cannot get more trains to stop, nor can service reliability be improved. We've examined the plans carefully and are submitting constructive objections and comments. Dore Village Society and Bradway Action Group have also made their views known, as have a number of other groups and individuals.

Network Rail have a wealth of experience with projects such as this! They employ an army of specialists, well used to attending inquiries and presenting evidence, often legally cross-examining objectors on the facts supporting their cases.

FoDaTS and DVS have reservations about the design of the proposed new footbridge (see page 35). It will have to be high to allow for any later electrification, but looks stark in its wooded surroundings. It will have lifts. What's proposed appears to be the minimum required to meet legislation. We've requested them to look at that again.*

FoDaTS is unhappy about the amount of covered waiting space provided now, and proposed for the future. That is the minimum normally provided for the sort of numbers using our station. We've asked them to look at that again as numbers are rising fast (up 19% in the last two years) and will rise further with more trains. Network

Rail are planning the minimum because that's all their remit from the Department for Transport requires them to do.

We've drawn attention to inadequate car parking. That's outside the terms of the scheme, but a park and ride facility is in Sheffield City Council's development plan and the South Yorkshire Local Transport Plan, both of which envision extension and further promotion of Park & Ride in the Sheaf Valley, primarily at Dore. That is probably a long way off and will have to compete for funding.

Although P&R is not something Network Rail's plans will currently take into account, we've flagged that they should. Similarly, any future tram/train system down the Sheaf valley corridor isn't being taken into account in the scheme.

We've had a site meeting with Network Rail and no concessions were forthcoming before the inquiry. FoDaTS, BAG and DVS have submitted a combined proof of evidence to be presented at the inquiry. We expect to be cross-examined.

The inquiry website provides all parties with information about individual objections and procedures. By the time you read this it should all be there at <http://hope-valley.persona-pi.com/>

Arriva Trains North, the new holder of the Northern franchise, will need to be involved in obtaining better facilities. As the TOC (Train Operating Company) they manage the station and are responsible for maintenance and improvements. At the time of writing they're still sorting themselves out after taking over the franchise on 1st April. We're hoping to engage with them as soon as possible to explain our case. It would be good if they could take Dore in hand as an example of what a train company can achieve, but we aren't holding our breath!

Similarly, we'll be trying to discover how to resolve the parking challenges. That will be a very delicate issue and the appropriate areas of local government will have to be involved.

More immediately than all this, it's good to be able to report that Arriva are already adding an extra return service through the Hope Valley on Sundays over the summer months. It's not the all year round, all day long, hourly service we'd like to see but it's going in the right direction.

They'd like to replace all the old Pacer trains before the Hope Valley improvements have been completed, but certainly by October 2019. Lots of new electric trains have been ordered (from Spain) although we shall get refurbished older carriages. Whatever we get should be faster and more comfortable than the Pacers, providing more seats, power points and free Wi-Fi for all passengers.

FoDaTS is still growing. We had a lively Public Meeting at Totley Library on Tuesday 5th April when the public inquiry was the main topic. We'll be keeping all friends up to date on our Facebook page. It's free to join and you'll be amazed to see how much fellow friends are contributing. Some is historical, some is about modern railway operations, and some is just news and views. A FoDaTS website is imminent so watch watch out for more news.

You can join FoDaTS by sending an email with your details to Nick Barnes at; nj-barnes@outlook.com or through the FoDaTS Facebook page which is kept up to date with news and opinions.

* **Stop press.** We have now seen Network Rail's Proof of Evidence to the inquiry. There have been minor changes from the plans previously submitted. The rail bridge over the River Sheaf just south of the station and north of Twentywell Lane will not need to be replaced. This will reduce the number of spaces that will be taken out of service in the car park. Nevertheless the car park will be restricted for several weeks, possibly 5 or 6 months, while the new footbridge and platforms are constructed. Temporary extra parking may have been arranged at Abbeydale Sports Club. The railway triangle will become the major construction site.

The Network Rail proof contains many documents to support their case. It's all on their website (above), and linked to our Facebook pages. Copies of their artistic impressions of the new station are here – apologies for having had to photograph large folded documents. Unless further changes can be agreed the best cover in inclement weather will be when crossing the bridge.

Vets4Pets Millhouses

Everything you need to keep your pet healthy and happy

- Modern medical and surgical facilities
- Friendly, pet loving team
- Free on-site parking

Ask us about... our affordable health plans for your pet

The surgery is locally owned by Vets
Tim Wood BVMS, MRCVS and
Alistair Boyd BVMS, MRCVS



Vets4Pets Sheffield Millhouses
 964 Abbeydale Road, Sheffield, S7 2QF

Call: **0114 236 4070**
 or visit: vets4pets.com/millhouses

Opening Times: Mon - Fri - 8:30am - 7pm, Sat - 9am - 5pm

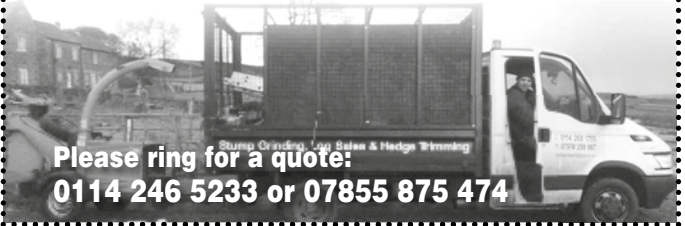


Complete Tree Solutions

All aspects of gardening work done

All treework and hedges • Any size anywhere

- Stump grinding
- Fully qualified and insured
- All materials removed and site cleared
- Competitive rates for senior citizens
- Sheffield Council approved
- 20 years experience



Please ring for a quote:
0114 246 5233 or 07855 875 474

Curtain & Roman Blind

design and making service

Personal service from a friendly family-run business established over 20 years.

Wide range of fabrics: both contemporary and traditional. Large portfolio of completed jobs to view.

Track and pole supply and fitting service.

For FREE home visit & advice, call Carron at C by C
0114 438 6378 Mobile 07963 630233

Don't let **pain** stop you from getting out there!



Let us help you keep Activ this summer, free from pain or limitation.

Call now for an appointment on

0114 2352727



Clinics in Bradway, Toley and the Hope Valley.

Registered with all major insurers.

www.activphysiotherapy.co.uk



Domestic - Contract - Commercial - Short & Long Term Hire

AFP

VAN HIRE & SALES LTD



afp servicing for all vehicles is available to the public



346 BRIGHTSIDE LANE,
SHEFFIELD, S9 2SP

Sheffield: 0114 261 0522

www.sheffieldvanhire.com

40 CLOUGH ROAD, MASBOROUGH,
ROTHERHAM, S61 1RD

Rotherham: 01709 550698

www.rotherhamvanhire.com

Clairvoyant sessions

Stop! Are you sick of making the same mistakes in love? Want to enjoy more loving relationships or attract new love into your life?

Start to change destructive behaviours with this four part Attract Love In Your Life group.

Led by Clairvoyant Tricia Mitchell, these sessions are designed to help you create a love-filled life. Only £50.

Venue: Greenhill Arts & Therapy Room, S8 7DG

<http://www.facebook.com/theclarityexpert>

Contact Tricia 07593 122523 to find out more & book your place now.

Still going strong

We are 36 years old and still going strong. Dore Probus Club, with a membership of retired men living in Dore and the surrounding area, has now 60 members due to an increase during 2015.

It is a thriving social club which provides a wide range of interesting and stimulating talks, and also over coffee/tea and biscuits gives us the opportunity to develop new friendships and discuss matters of similar interest. We organise a programme of visits, locally and by coach to a range of venues, and lunches, to which partners and friends are cordially invited.

We meet twice a month on the second and fourth Thursdays between 10am and noon at Dore Methodist Church. You are invited to come along to a meeting as a visitor for a couple of meetings, free and with no obligation, to meet us and listen to a talk. All you need to do is ring me on 262 1902, so that I can answer any of your questions and arrange for someone to meet you on your arrival.

Should you decide that you wish to join us, the annual membership fee is £35 for 24 talks which includes refreshments, plus a one off £8 joining fee which includes the cost of a Probus lapel pin and a name badge.

For the programme of our talks and meeting dates please visit our website: <https://doreprobus.wordpress.com/>

Alan York

PILATES CLASSES Dore Old School, Tuesdays 9.15-10.15am. Fridays 9.15-10.15am, 10.30-11.30am. Tone muscles, improve posture, increase flexibility and relax. Teresa Tinklin 07906 312372, <http://www.bodyhealthpilates.co.uk/>

PREGNANCY YOGA. Mondays 7.30-9.00pm at the Old School. Starting September. Phone Caroline 07837 876429. BWY teacher.

LOVING HOMES WANTED We are a small Cat Rescue in Dore and we are in desperate need of loving homes for the beautiful cats and kittens currently in our care. If you are interested in re-homing a cat or a kitten now or in the near future, please call 07772 650162 and we will be delighted to show you around.

HAIR STYLIST – EXPERIENCED, PROFESSIONAL AND LOCAL. City and Guilds Qualified in Hair Design and Cutting to a very high standard. All in the comfort of your own home. For appointments please telephone Suzanne – Daytime 07899 996660 – Evening 236 8797. Please see my Website for further details www.suzanneofdore.co.uk

CURTAINS AND ACCESSORIES making service. Also interior design advice. Tel: 07803 198532

GARAGE DOORS - any problems with garage doors , or for new and replacement doors please ring 01142 362111 for free survey.

COMPUTERS FOR BEGINNERS Made Easy. Learn to use your tablet , PC or mobile phone, from a local tutor on 1-to1, in your home, at your pace. One off or ongoing classes. Call Anne on 01142353297

Girlguiding Blackamoor District

As I am sure many of you realise, Girlguiding in Dore is very active and our units are popular, which is in many ways a reflection of the quality of the leadership teams in the district. As a result we find that we constantly have a long waiting list for the sole Rainbow guide unit in the village which admits girls aged 5-7.

We are looking to open a second Rainbow unit in September. We have someone to run the unit and another helper, but we really need at least two more people to join the team.

The leadership team plans and organises an activity programme, manages the online database, and maintains the accounts. This is an opportunity for you to learn new skills, try out new activities (outdoor adventurous activities – two of our leaders are going on an adult day sail off the coast this summer, crafts and more), visit new places, have new experiences and be part of a supportive community where you will make life-long friends.

If you feel you could help us out, or indeed know of someone who might be interested please get in touch. If you would like to find out more about what the different roles entail, I would be very happy to talk to you or you could check out our website and Facebook pages to have a look at what is going on in the district.

Lynne Davis, Blackamoor District Commissioner

<http://www.girlguidingblackamoor.org.uk/>

BABYSITTER REQUIRES WORK. Honest, reliable, local to Dore. Completing a childcare course. References can be supplied. Tel 0787 664 0051

PRIMARY TUITION. For ages 5-11. Maths, English, Reading, whatever needs a confidence boost. Qualified, experienced teacher. 0787 0290 526

KIWI COTTAGE WHITBY. Cosy Cottage in Whitby tucked away near bottom of Abbey steps. Sleep 4 in 2 bedrooms (double and twin). For more details, prices and availability see Kiwi Cottage Whitby on Facebook, Twitter or email kiwicottagewhitby@gmail.com

AQUA TILES - All aspects of floor and wall tiling. Free estimates and competitive rates. Phone Andy on 07983622324

JEWELLERY MAKING CLASSES, weekly courses & parties. Abbeydale Industrial Hamlet. Jewellery Taster Day Saturday 12 March. Spoon Making Day Saturday 9 April. Birthday Parties ages 8+. Fully qualified experienced tutor. New Thursday 8 week Class 10 am-12 midday starts 7 April. www.budgiegalore.co.uk email: info@budgiegalore.co.uk 07925 548898

ALAN GODDARD PLUMBING & Heating Dore 103 Limb Lane Dore S17 3ES 0114 2364575 / 07973 181666

PKFITNESS - Personal Trainer For busy Mums and Working Ladies! Get Fit, Firm & Feel Fab with Phoebe Kay in the comfort of your own home! £20 per session if you buy 5 sessions in advance OR £25 per session. Make health your priority and contact me on 07887 482 100 or email phoebe@pkfitness.co.uk

PART TIME DOG LOVING volunteers wanted, to look after lovely dogs whilst their owners are away. This is not a job but a rewarding hobby. For further information please contact Louise on 012464 88574 or email louiseseif@barkingmad.uk.com

DEPRESSION AFFECTS 1 in 4 people. 80,000 children have depression. If you or your loved one is stressed or depressed, contact Tricia Mitchell, qualified Health Coach & EFT Therapist to discuss stress reduction workshops & 1-1 sessions to improve your emotional wellbeing. www.triciamitchell.co.uk Tel: 07593 122523

FRENCH TUITION: Interested in learning French at home with a native and experienced person living locally? Confidence building required for GCSE (including new GCSE), A levels? Call Anne on 235 3297 or 07796 326752. Beginners to advanced. Also conversation group locally & short translations.

PROPERTY MAINTENANCE and improvement. All aspects including painting, tiling, flooring and joinery, decking, fencing, pointing, guttering and stove fitting HETAS approved. Also garden work and unusual jobs. 14 years in business, local. Call Jamie on 0114 235 3297 or 07786 906693

MISSING CAT. Our 9-month old kitten Pixel hasn't been seen since 30 March. He's a tabby with a big grey spot on the right. If you see him, please call 07717 053911 or bring him to the closest vet surgery.

FREE DOG TRIM offer! Student groomer requires dogs for supervised training . Ring for details. 07876640051/2353251

MAY

- Sat 21 & Sun 22 Spring Plant Sale: The South Pennine Group of the Hardy Plant Society, Sheffield Botanical Gardens (Thompson Road entrance). A wide selection of well-loved and rarer hardy plants for sale, with advice from knowledgeable members. Free admission, all welcome. 11-2.30pm Saturday, 10am-1.30pm Sunday. For further information about the Group please see our website: www.southpenninehps.btck.co.uk
- Sun 22 Community Garden Party, Totley Rise Methodist Church 3pm - 4.30pm. Free admission, cream teas, Seven Hills Quartet Jazz Band
- Mon 23 Dore Methodist Church Monday Fellowship. Speaker Nick Summerbell: 'The Canal for Everyone'. Everyone welcome. Methodist Church Hall, 2.30pm
- Tue 24 Dore Mercia Townswomen's Guild, 9.30 for 10am, Church Hall, Townhead Road. Speaker Maureen Taylor, 'Gardeneros etc.' Visitors welcome, £2 includes coffee.

JUNE

- Sat 4-Sun 5 Sheffield Vulcan Rotary Club annual car show, city centre. See article, page 3
- Sun 5 Wyvern Walkers: Youlgreave, Bradfield Dale, Elton (9.5 miles). Meet at Dore Old School for a 9.30am start. Bring a packed lunch. Further details from Philip Hetherington, 0114 236 7647
- Sun 5 Doreways 'Summer Spruce-up' litter pick, village centre. For full details please see article on page 3.
- Mon 6 Dore Methodist Church Monday Fellowship. Speaker Dorothy Firth: 'The Work of Christian Aid'.
- Wed 8 Wyvern Walkers: Ashford – Monsal Trail – Little Monsal (5 miles). Meet at Dore Old School for a 9.30 am start. Further details from Sue Severs, 0114 236 8095
- Wed 8 Dore Village Society Annual General Meeting, Dore Methodist Church Hall, 7.30pm. Please see notice on page 2.
- Sat 11 Men's Breakfast, Totley Rise Methodist Church 9.30am. Paul Oakley, Vicar of Totley All Saints, will attempt to answer some of Life's Big Questions. Begin your Saturday with complimentary English breakfast and great conversation. For more information contact Richard Grosberg – richard.grosberg@btinternet.com or 0114 236 3157.
- Sun 12 Dore Village celebrates the 90th birthday of Her Majesty Queen Elizabeth II with a party on the village green. See page 3.
- Wed 15 Holmesfield Flower Club: Demonstration of Flower Arranging by the acclaimed NAFAS National Floral Designer Andrew Grisewood entitled "Summer Sensation" at Holmesfield Village Hall, Vicarage Road (Off Woodside Avenue), Holmesfield, S18 7WZ, 7.30pm. Tickets available at the door: visitors £10; members £5. The arrangements will be raffled at the end of the evening. All welcome and early arrival recommended.
- Thu 16 Dore Garden Club trip to Taylor's Nursery (Clematis specialists) and Brodsworth Hall. Further details from Janet Hewitt 0114 235 0434.
- Sat 18 Friends of Whinfall Quarry Gardens working day – general maintenance and gardening work. Volunteers meet at the main gates to the gardens, 9.30am.
- Sat 25 Dore Festival Fortnight begins (until Sun 10 July). For full programme of events please see page 25.
- Sat 25 Leonard Cheshire Disability Summer Fayre, Mickley Hall, Mickley Lane, Totley, from 2pm - 5pm. Official opening at 2pm by Paulette Edwards from Radio Sheffield. Attractions will include music by 'Gentlemen of Jazz', a Mini-Zoo and a variety of stalls, refreshments, etc. Further details from Jackie Short on 0114 249 6583.
- Mon 27 Preparation of Dore Village well dressing, Scout HQ, Rushley Road. See article, page 2.

Sphagnum Moss returned to the Moors

A rare type of moss that is in danger of disappearing from the Peak District has been replanted across specific moors in a pioneering project.

Sphagnum moss is important for wildlife but also plays a vital role in carbon storage and flood prevention. Atmospheric pollution from Manchester and Sheffield during the industrial revolution, along with overgrazing and wildfires have nearly wiped out sphagnum completely from the Peak District.

Wildscapes, a Community Interest Company affiliated to Sheffield and Rotherham Wildlife Trust, has been working alongside the RSPB to help re-establish large amounts of sphagnum across Rakes Moss on the Dovestones Nature Reserve.

Kate Hanley at the RSPB said 'We have been working with volunteers to re-establish sphagnum moss across this moorland for a number of years now. This is the first time we have worked

Thu 30 - Sun 3 Jul Music in the Gardens; series of concerts in Sheffield Botanical Gardens. For full details see page 7.

JULY

- Sat 2 Wyvern Walkers: Dore Festival Walk. A family friendly walk, including a coffee break at Hathersage and farm made ice cream at Thorp Farm (5.8 miles). Meet at Dore Old School for a 9.30 am start. Further details from Chris Cave, 0114 236 4648 . See page 25.
- Sat 2 Dore Gilbert & Sullivan Summer Concert, Dore Church Hall, Townhead Road. Tickets £7.50 each from Derek Habberjam Tel: 0114 236 2299.
- Thu 7 Dore Male Voice Choir and King Ecgbert School Jazz Band summer concert, Dore Church Hall 7.30pm.
- Fri 8 Wyvern Walkers: Dore Festival Demonstration Health Walk (3 miles). To suit people of all levels of fitness, including dogs! Meet on Dore Village Green for a 10am start. Refreshments afterwards in the Methodist Church Hall. See page 25.
- Sat 9 Dore Annual Scout and Guide Gala recreation ground, 2pm onwards. See page 4.
- Sat 9 Friends of Whinfall Quarry Gardens working day – general maintenance and gardening work. Volunteers meet at the main gates to the gardens, 9.30am.
- Sat 16 & Sun 17 Totley Open Gardens, 1pm-5pm, admission £4.00. Programmes from the Ironing Parlour, 170 Baslow Road, S17 4DR; Mand Made, 193 Baslow Rd, and Totley Library from 2 weeks before the event. On the Open Weekend programmes sold outside The Ironing Parlour and from Cross Scythes pub, Baslow Road. Enquiries to Jennie Street on 236 2302 or email jennie@hadish.f9.co.uk
- Wed 20 Dore Garden Club, Methodist Church Hall 7.30pm. Speaker Maria Smith of Dronfield Heritage Trust: "Development of Dronfield Hall Gardens".
- Wed 20 Holmesfield Flower Club: Demonstration of Flower Arranging entitled "The Music of Flowers" by Gill Mills (NAFAS Area demonstrator). at Holmesfield Village Hall, Vicarage Road (Off Woodside Avenue), Holmesfield, S18 7WZ, 7.30pm. Tickets available at the door: visitors £8; members £4. The beautiful arrangements will be raffled at the end of the evening. All are welcome.
- Fri 22 Wyvern Walkers: Upper Burbage, Stanage Edge and Hathersage. Meet at Dore Old School for a 9.30 am start. (6.5 miles, with a 4 mile option). Further details from Godfrey Wilkinson, 0114 2366319

AUGUST

- Sat 6 Friends of Whinfall Quarry Gardens working day – general maintenance and gardening work. Volunteers meet at the main gates to the gardens, 9.30am.
- Mon 8 Wyvern Walkers: Limestone Way above Winster, including Luntor Rocks and Bonsall Moor (4.8 miles). Meet at Dore Old School for a 9.30 am start. Further details from Stephen Willetts, 0114 236 2821
- Wed 17 Holmesfield Flower Club: Social Evening and annual competition for club members – Create an arrangement in the container/s decorated at the May workshop. Followed by a bring and share summer supper. Contact Diana: 0114 2377601 for information. All are welcome, not just members. Holmesfield Village Hall, Vicarage Road (Off Woodside Avenue), Holmesfield, S18 7WZ, 7.30pm. Visitors £4.00, members £2.
- Tue 30 Wyvern Walkers: Exploring the hidden parts of Hathersage and surrounding countryside (5.5 miles). Meet at Dore Old School for a 9.30 am start. Further details from David Bearpark, 0114 2369100

with contractors to do this conservation work on such a large scale.'

Wildscapes worked alongside another environmental contractor and the RSPB to translocate well over 12,500 handfuls of specific species of sphagnum moss from a healthy donor site. A local airlifting company, Pennine Helicopters, also supported the operation by flying the moss onto the moors at Dovestones. Once in position on the moors, they were planted by hand by a team of contractors, chosen for their specialist environmental knowledge.

Alex Davies, Site Supervisor from Wildscapes said; 'The project has been hard work, but very rewarding. The species require specific conditions to establish successfully and need to be treated with the upmost care when they are being translocated. We hope that this project will make a big difference to the surrounding area and really help improve the quality of this moorland'

This pioneering project, alongside a number of other projects involving local partners, will help to re-establish this important moss across the Peak District.